

T1S, R99W, 6th P.M.

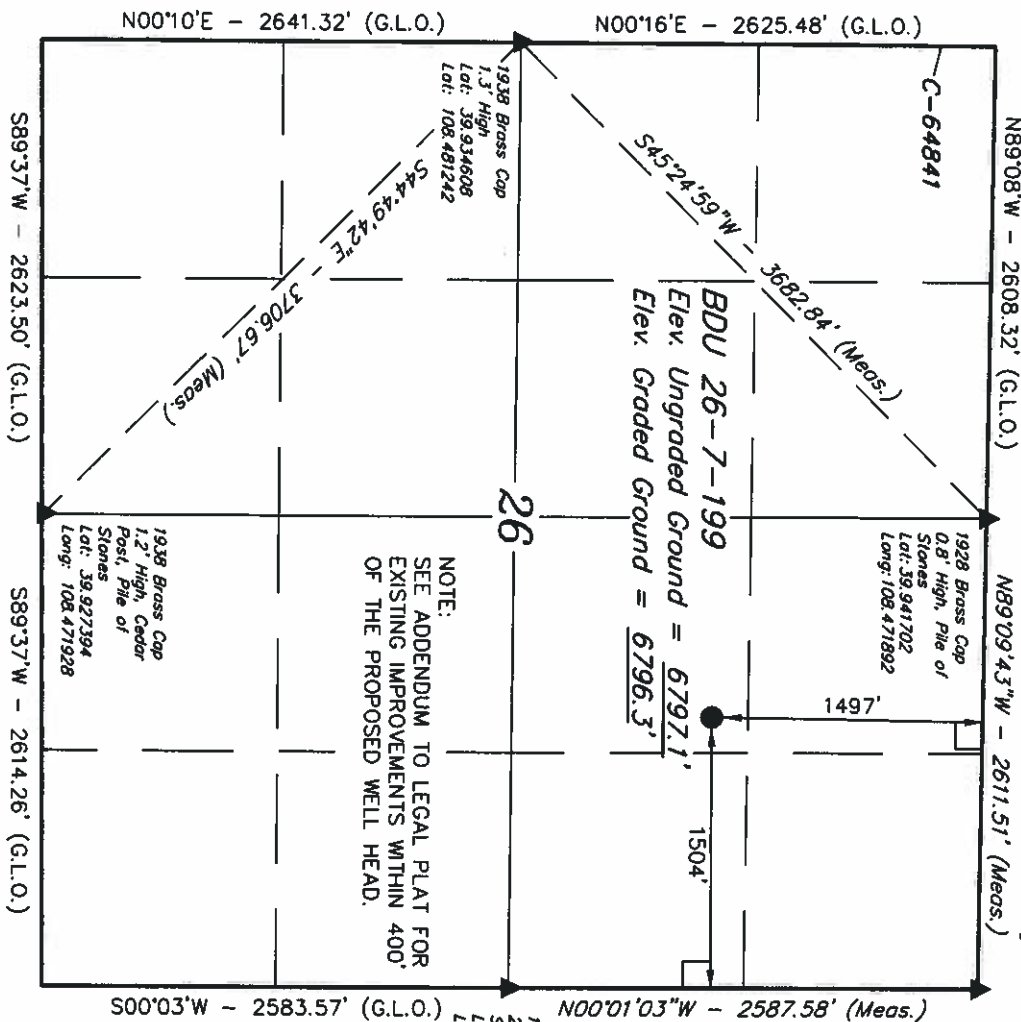
MESA ENERGY PARTNERS, LLC
Well location, BDU 26-7-199, located as shown in the SW 1/4 NE 1/4 of Section 26, T1S, R99W, 6th P.M., Rio Blanco County, Colorado.

BASIS OF ELEVATION

SPOT ELEVATION AT THE NORTHEAST CORNER OF SECTION 10, T1S, R99W, 6th P.M. TAKEN FROM THE WOLF RIDGE QUADRANGLE, COLORADO, RIO BLANCO COUNTY, 7.5 MINUTE SERIES (TOPOGRAPHICAL MAP) PUBLISHED BY THE UNITED STATES DEPARTMENT OF THE INTERIOR, GEOLOGICAL SURVEY. SAID ELEVATION IS MARKED AS BEING 6663 FEET.

BASIS OF BEARINGS

BASIS OF BEARINGS IS A G.P.S. OBSERVATION.



NOTE:
SEE ADDENDUM TO LEGAL PLAT FOR
EXISTING IMPROVEMENTS WITHIN 400'
OF THE PROPOSED WELL HEAD.



SCALE
CERTIFICATE

THIS IS TO CERTIFY THAT THE ABOVE PLAT WAS PREPARED FROM FIELD NOTES OF ACTUAL SURVEYS MADE BY ME OR UNDER MY SUPERVISION AND THAT THE SAME ARE TRUE AND CORRECT TO THE BEST OF MY KNOWLEDGE AND BELIEF.

REVISED: 12-19-20 D.R.B.
REVISED: 06-03-09
REVISED: 04-09-09
REVISED: 03-26-09

REGISTERED AND EXPIRATION
REGISTRATION NO. 174927
STATE OF COLORADO

UINTAH ENGINEERING & LAND SURVEYING
85 SOUTH 200 EAST - VERNAL, UTAH 84078
(435) 789-1017

LEGEND:

- 90° SYMBOL
- PROPOSED WELL HEAD.
- SECTION CORNERS LOCATED.

PDOP = 1.6		SCALE 1" = 1000'	DATE SURVEYED: 03-12-09	DATE DRAWN: 03-13-09
MAD 83 (SURFACE LOCATION) LATITUDE = 39°56'15.18" (39.9337550) LONGITUDE = 108°28'04.59" (108.4679442)		PARTY B.H. B.B. C.H.	REFERENCES G.L.O. PLAT	
MAD 27 (SURFACE LOCATION) LATITUDE = 39°56'15.28" (39.9337578) LONGITUDE = 108°28'02.25" (108.467292)		WEATHER COOL	FILE MESA ENERGY PARTNERS, LLC	