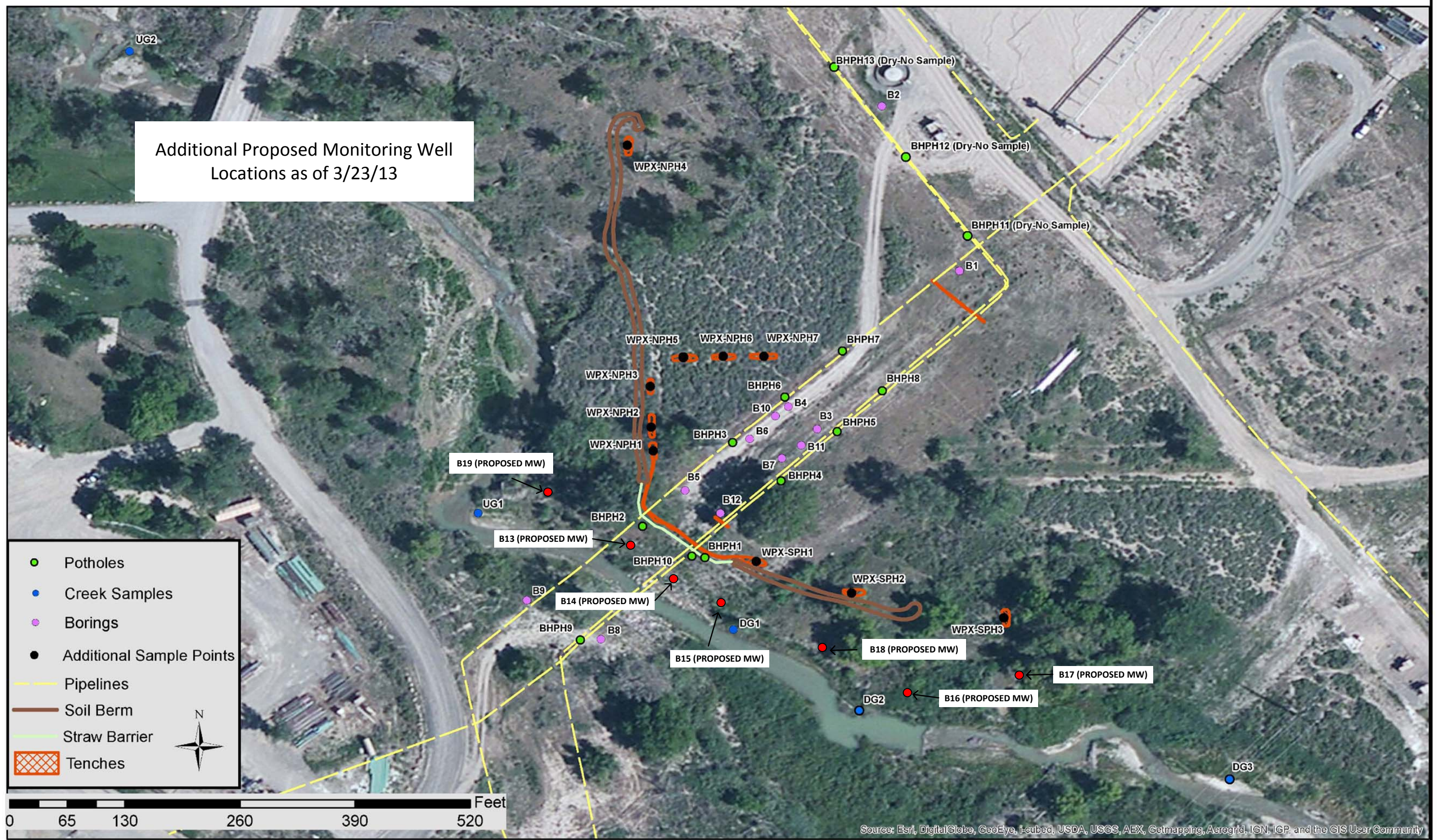


Additional Proposed Monitoring Well Locations as of 3/23/13



Source: Esri, DigitalGlobe, GeoEye, I-cubed, USDA, USGS, AEX, Getmapping, Aerogrid, IGN, IGP, and the GIS User Community

F:\Projects\20050154\gis\maps.mxd

PROJECT:	
DRAWN BY: BFB	
DATE: March 20, 2013	

Williams
COGCC Incident 2232359
Garfield County, CO



OLSSON
ASSOCIATES

1111 Lundy Mall, Suite 111
P.O. Box 9000
Lubbock, TX 79409-0000
TEL 806.741.5111
FAX 806.741.5100
www.olssonassociates.com