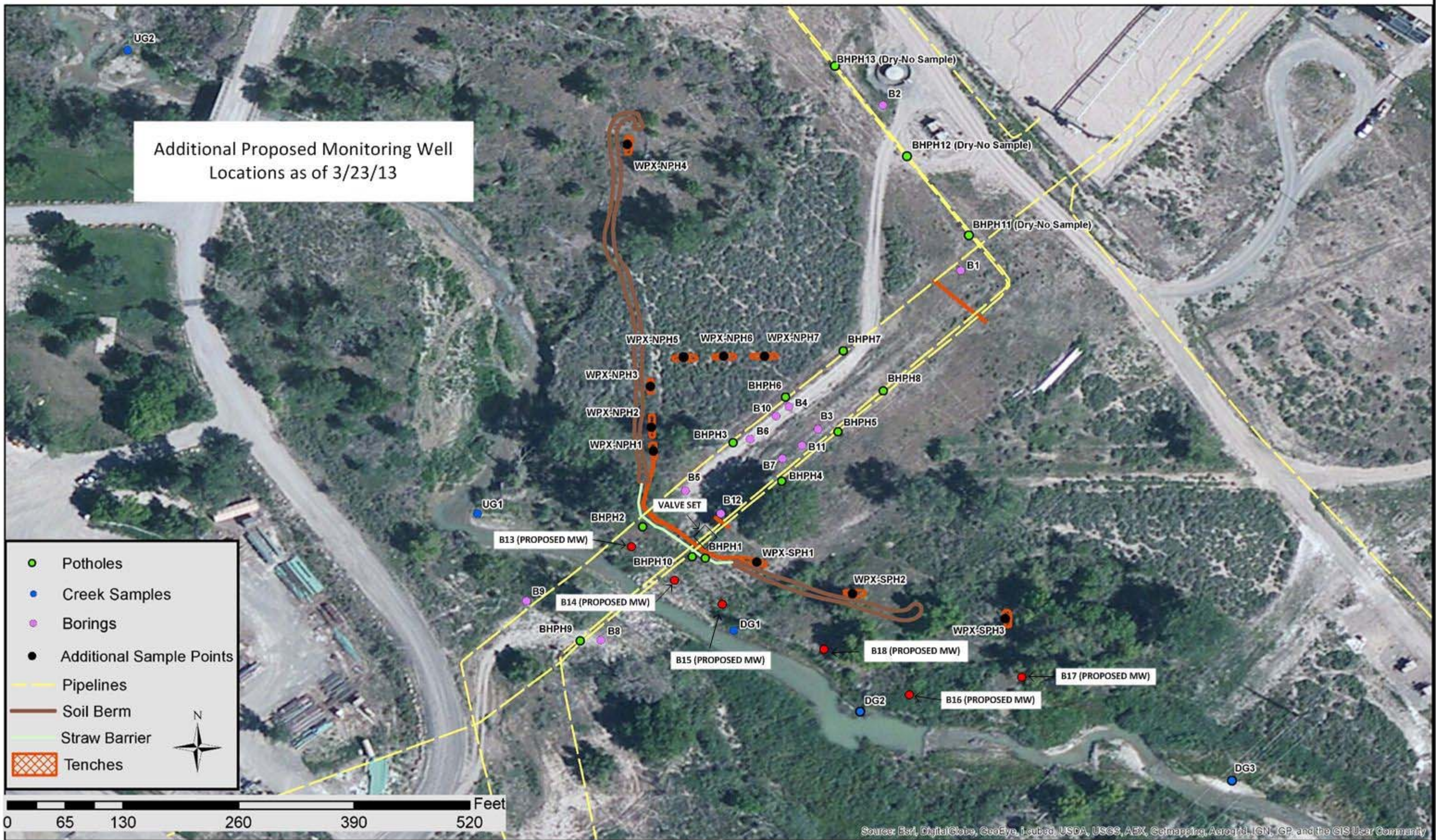


Additional Proposed Monitoring Well Locations as of 3/23/13



Source: Esri, DigitalGlobe, GeoEye, Earthstar, USDA, USGS, AEX, Geomapping, AeroGRID, IGN, GP, and the GIS User Community

PROJECT:
DRAWN BY: BFB
DATE: March 20, 2013

Williams
COGCC Incident 2232359
Garfield County, CO

OLSSON ASSOCIATES
8111 Leachy Mill, Suite 111
P.O. Box 9520
Fort Collins, CO 80521-0520
TEL: 970.481.8111
FAX: 970.481.8111
www.olsonassociates.com

F:\Projects\20050154\gis\maps.mxd