

# WEXPRO COMPANY

## CONSTRUCTION LAYOUT FOR

DONNELL #20

SECTION 6, T11N, R97W, 6th P.M.

652' FNL 1972' FWL

FIGURE #1

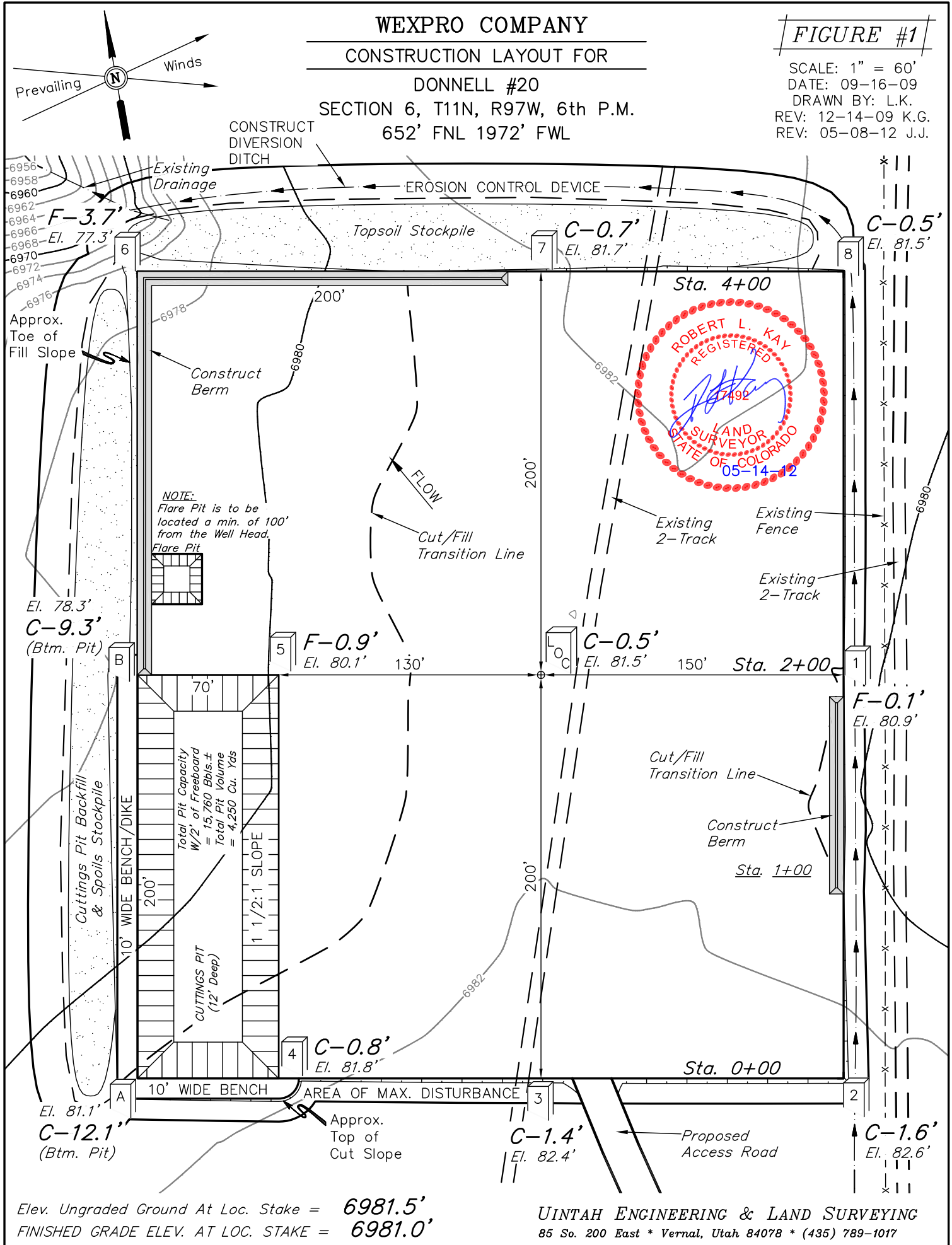
SCALE: 1" = 60'

DATE: 09-16-09

DRAWN BY: L.K.

REV: 12-14-09 K.G.

REV: 05-08-12 J.J.



Elev. Ungraded Ground At Loc. Stake = 6981.5'  
FINISHED GRADE ELEV. AT LOC. STAKE = 6981.0'

UINTAH ENGINEERING & LAND SURVEYING  
85 So. 200 East \* Vernal, Utah 84078 \* (435) 789-1017

# WEXPRO COMPANY

## CONSTRUCTION LAYOUT CROSS SECTIONS FOR

DONNELL #20

SECTION 6, T11N, R97W, 6th P.M.

652' FNL 1972' FWL

FIGURE #2

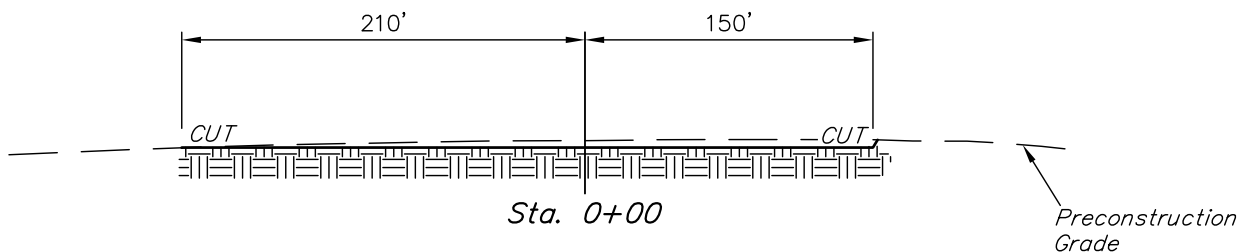
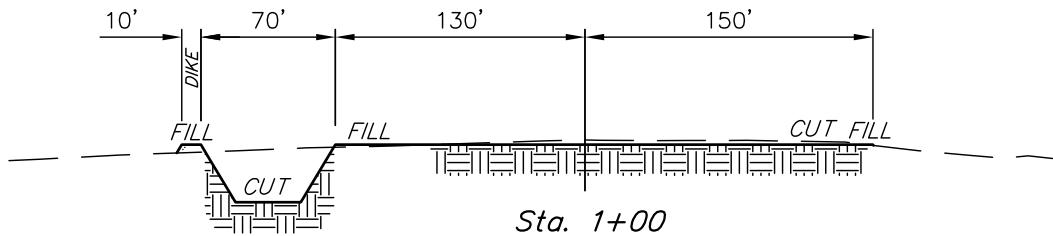
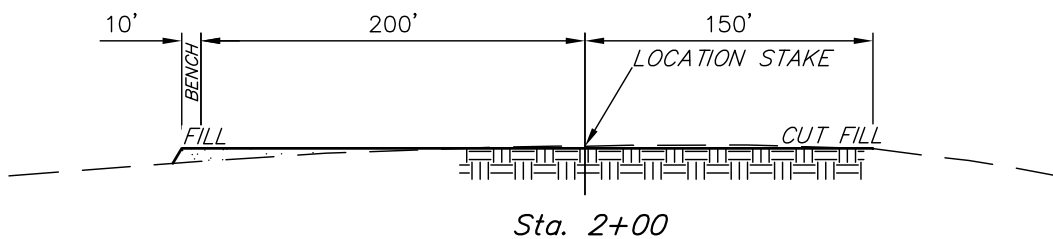
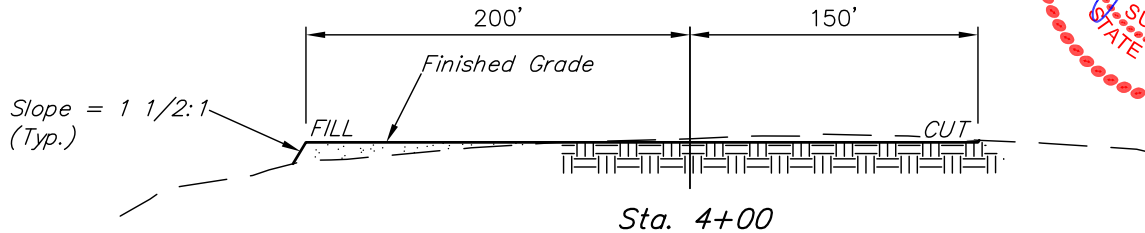
X-Section  
Scale  
1" = 100'

DATE: 09-16-09

DRAWN BY: L.K.

REV: 12-14-09 K.G.

REV: 05-08-12 J.J.



### NOTE:

Topsoil should not be Stripped Below Finished Grade on Substructure Area.

### APPROXIMATE ACREAGES

WELL SITE DISTURBANCE = ± 4.538 ACRES  
ACCESS ROAD DISTURBANCE = ± 0.980 ACRES  
PIPELINE DISTURBANCE = ± 1.011 ACRES  
TOTAL = ± 6.529 ACRES

\* NOTE:  
FILL QUANTITY INCLUDES 5% FOR COMPACTION

### APPROXIMATE YARDAGES

(6") Topsoil Stripping = 2,650 Cu. Yds.  
Remaining Location = 4,600 Cu. Yds.  
TOTAL CUT = 7,250 CU. YDS.  
FILL = 2,470 CU. YDS.

EXCESS MATERIAL = 4,780 Cu. Yds.  
Topsoil & Pit Backfill (1/2 Pit Vol.) = 4,780 Cu. Yds.  
EXCESS UNBALANCE (After Interim Rehabilitation) = 0 Cu. Yds.

UINTAH ENGINEERING & LAND SURVEYING  
85 So. 200 East \* Vernal, Utah 84078 \* (435) 789-1017