

KERR-MCGEE OIL & GAS ONSHORE LP

Location: COLORADO Slot: SLOT#21 WISHBONE 29C-24HZ (320°FSL & 980°FWL, SEC.24)
Field: WELD COUNTY (KERR MCGEE) Well: WISHBONE 29C-24HZ
Facility: SEC.24-T2N-R66W Wellbore: WISHBONE 29C-24HZ PWB

Plot reference wellpath is WISHBONE 29C-24HZ (PERMIT) PWB

| | |
|---|--|
| True vertical depths are referenced to Rig on SLOT#21 WISHBONE 29C-24HZ (320°FSL & 980°FWL, SEC.24) (RKB) | Grid System: NAD83 / Lambert Colorado SP, Northern Zone (501), US feet |
| Measured depths are referenced to Rig on SLOT#21 WISHBONE 29C-24HZ (320°FSL & 980°FWL, SEC.24) (RKB) | North Reference: True north |
| Rig on SLOT#21 WISHBONE 29C-24HZ (320°FSL & 980°FWL, SEC.24) (RKB) to Mean Sea Level: 5099 feet | Scale: True distance |
| Mean Sea Level to Mud line (At Slot: SLOT#21 WISHBONE 29C-24HZ (320°FSL & 980°FWL, SEC.24)): 0 feet | Depths are in feet |
| Coordinates are in feet referenced to Slot | Created by: wilja02 on 2/25/2013 |

Location Information

| | | | | | | | | | |
|---|-----------------|-------------------|-------------|--------------------|-------------|-------------------|----------------|--------------------|-----------------|
| Facility Name | SEC.24-T2N-R66W | Grid East (US ft) | 3214370.720 | Grid North (US ft) | 1286534.330 | Latitude | 40°07'02.580"N | Longitude | 104°43'00.532"W |
| Spot | | Local N (ft) | 3.34 | Local E (ft) | 562.78 | Grid East (US ft) | 3214370.720 | Grid North (US ft) | 1286534.330 |
| SLOT#21 WISHBONE 29C-24HZ (320°FSL & 980°FWL, SEC.24) | | | | | | Grid East (US ft) | 3214370.720 | Grid North (US ft) | 1286534.330 |
| Rig on SLOT#21 WISHBONE 29C-24HZ (320°FSL & 980°FWL, SEC.24) (RKB) to Mean Sea Level: 5099 feet | | | | | | | | | |
| Mean Sea Level to Mud line (At Slot: SLOT#21 WISHBONE 29C-24HZ (320°FSL & 980°FWL, SEC.24)) | | | | | | | | | |
| Rig on SLOT#21 WISHBONE 29C-24HZ (320°FSL & 980°FWL, SEC.24) (RKB) to Mean Sea Level | | | | | | | | | |

Survey Program

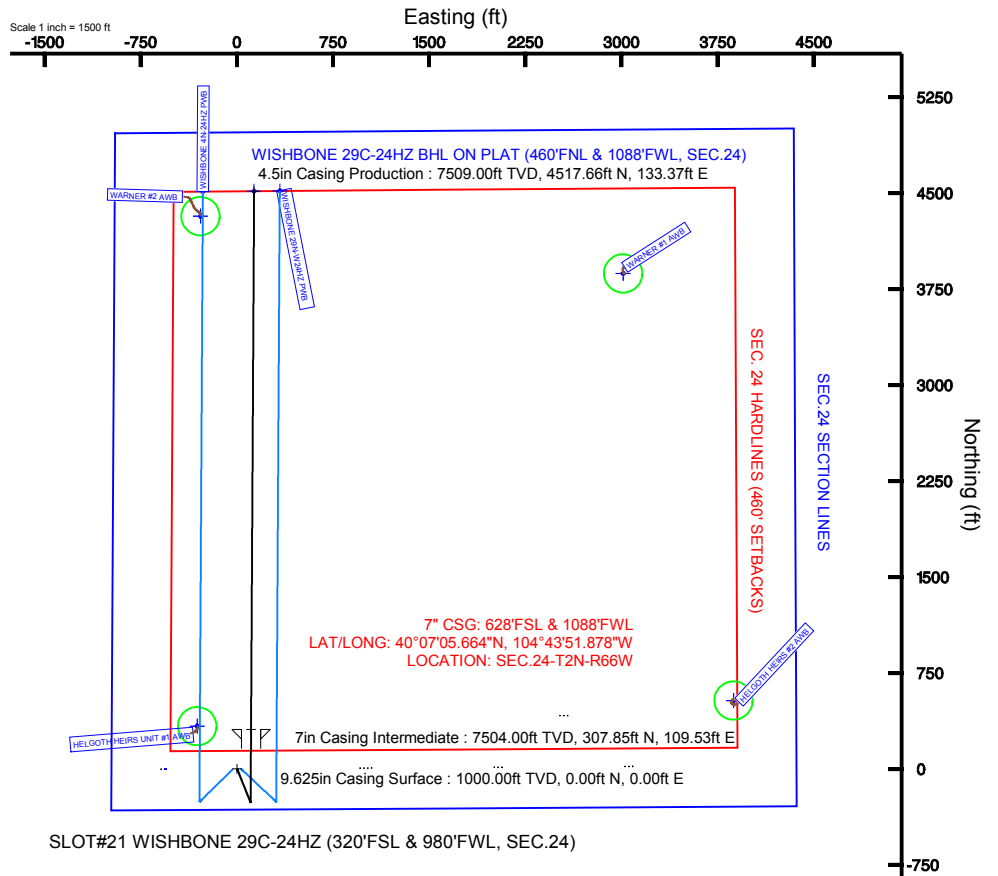
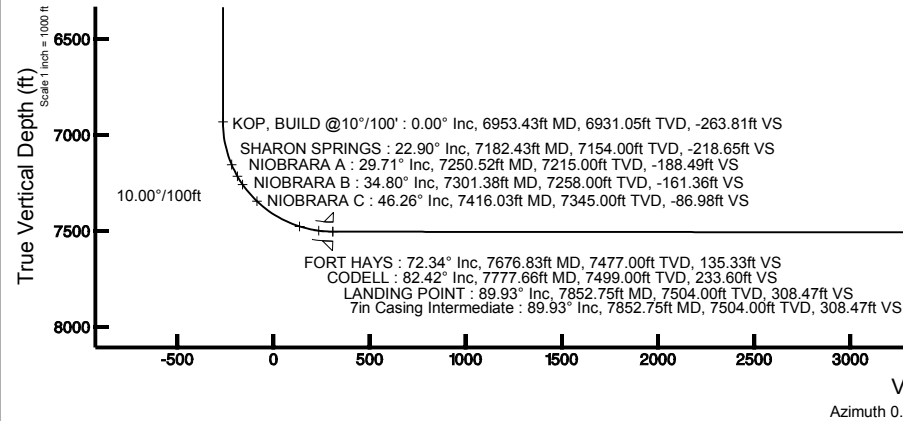
| Start MD (ft) | End MD (ft) | Tool | Model | Log Name/Comment | Wellbore |
|---------------|-------------|----------|--------------------|------------------|-----------------------|
| 17.00 | 7852.75 | NaviTrak | NaviTrak (MagCorr) | | WISHBONE 29C-24HZ PWB |
| 7852.75 | 12062.62 | OnTrak | OnTrak (MagCorr) | | WISHBONE 29C-24HZ PWB |

Well Profile Data

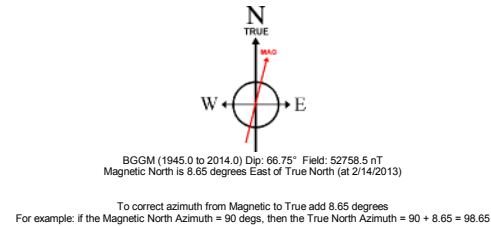
| Design Comment | MD (ft) | Inc (°) | Az (°) | TVD (ft) | Local N (ft) | Local E (ft) | DLS (°/100ft) | VS (ft) |
|----------------------|----------|---------|---------|----------|--------------|--------------|---------------|---------|
| TIE-ON | 17.00 | 0.000 | 158.100 | 17.00 | 0.00 | 0.00 | 0.00 | 0.00 |
| BEGIN NUDGE | 1200.00 | 0.000 | 158.100 | 1200.00 | 0.00 | 0.00 | 0.00 | 0.00 |
| END NUDGE | 1700.00 | 10.000 | 158.100 | 1697.47 | -40.38 | 16.23 | 2.00 | -40.29 |
| BEGIN DROP | 2839.85 | 10.000 | 158.100 | 2820.00 | -224.03 | 90.06 | 0.00 | -223.52 |
| END DROP | 3339.85 | 0.000 | 0.324 | 3317.47 | -264.41 | 106.29 | 2.00 | -263.81 |
| KOP, BUILD @10°/100' | 6953.43 | 0.000 | 0.324 | 6931.05 | -264.41 | 106.29 | 0.00 | -263.81 |
| LANDING POINT | 7852.75 | 89.932 | 0.324 | 7504.00 | 307.86 | 109.53 | 10.00 | 308.47 |
| TOTAL DEPTH | 12062.62 | 89.932 | 0.324 | 7509.00 | 4517.66 | 133.37 | 0.00 | 4518.34 |

Targets

| Name | MD (ft) | TVD (ft) | Local N (ft) | Local E (ft) | Grid East (US ft) | Grid North (US ft) | Latitude | Longitude |
|--|----------|----------|--------------|--------------|-------------------|--------------------|----------------|-----------------|
| SEC.24 SECTION LINES | | 22.00 | -3.23 | -562.78 | 3214370.72 | 1286534.33 | 40°07'02.580"N | 104°43'00.532"W |
| HELGOOTH HERS #2 150' RADIUS | | 39.00 | 533.99 | 3876.02 | 3218804.51 | 1287109.98 | 40°07'07.896"N | 104°43'03.396"W |
| HELGOOTH HERS UNIT #1 150' RADIUS | | 39.00 | 333.33 | -310.75 | 3214619.81 | 1286873.05 | 40°07'05.916"N | 104°43'57.288"W |
| WARNER #1 150' RADIUS | | 39.00 | 3874.46 | 3014.20 | 3217913.81 | 1290442.71 | 40°07'40.908"N | 104°43'14.484"W |
| WARNER #2 150' RADIUS | | 39.00 | 4322.36 | -285.54 | 3214610.45 | 1290861.97 | 40°07'45.336"N | 104°43'56.964"W |
| WISHBONE 29C-24HZ BHL ON PLAT (460°FNL & 1088°FWL, SEC.24) | 12062.62 | 7509.00 | 4517.66 | 133.37 | 3215027.64 | 1291060.89 | 40°07'47.266"N | 104°43'51.571"W |
| SEC. 24 HARDLINES (460' SETBACKS) | | 7622.00 | -3.23 | -562.78 | 3214370.72 | 1286534.33 | 40°07'02.580"N | 104°43'00.532"W |



SLOT#21 WISHBONE 29C-24HZ (320°FSL & 980°FWL, SEC.24)



4.5in Casing Production : 89.93° Inc, 12062.62ft MD, 7509.00ft TVD, 4518.34ft VS
TOTAL DEPTH : 89.93° Inc, 12062.62ft MD, 7509.00ft TVD, 4518.34ft VS
WISHBONE 29C-24HZ BHL ON PLAT (460°FNL & 1088°FWL, SEC.24)

Scale 1 inch = 1000 ft



Planned Wellpath Report

WISHBONE 29C-24HZ (PERMIT) PWP
Page 1 of 7



REFERENCE WELLPATH IDENTIFICATION

| | | | |
|----------|---------------------------------|----------|---|
| Operator | KERR-MCGEE OIL & GAS ONSHORE LP | Slot | SLOT#21 WISHBONE 29C-24HZ (320'FSL & 980'FWL, SEC.24) |
| Area | COLORADO | Well | WISHBONE 29C-24HZ |
| Field | WELD COUNTY (KERR MCGEE) | Wellbore | WISHBONE 29C-24HZ PWB |
| Facility | SEC.24-T2N-R66W | | |

REPORT SETUP INFORMATION

| | | | |
|---------------------|---|----------------------|---|
| Projection System | NAD83 / Lambert Colorado SP, Northern Zone (501), US feet | Software System | WellArchitect® 3.0.2 |
| North Reference | True | User | Wilsjef02 |
| Scale | 0.99996 | Report Generated | 2/25/2013 at 11:50:28 |
| Convergence at slot | 0.50° East | Database/Source file | WellArchitectDB\WISHBONE_29C-24HZ_PWB.xml |

WELLPATH LOCATION

| | Local coordinates | | Grid coordinates | | Geographic coordinates | |
|-----------------------|-------------------|----------|------------------|-----------------|------------------------|-----------------|
| | North[ft] | East[ft] | Easting[US ft] | Northing[US ft] | Latitude | Longitude |
| Slot Location | 3.34 | 562.78 | 3214933.43 | 1286542.44 | 40°07'02.622"N | 104°43'53.288"W |
| Facility Reference Pt | | | 3214370.72 | 1286534.23 | 40°07'02.589"N | 104°44'00.532"W |
| Field Reference Pt | | | 3197771.84 | 1268891.29 | 40°04'09.600"N | 104°47'36.000"W |

WELLPATH DATUM

| | | |
|--------------------------|--|--|
| Calculation method | Minimum curvature | Rig on SLOT#21 WISHBONE 29C-24HZ (320'FSL & 980'FWL, SEC.24) (RKB) to Facility Vertical Datum |
| Horizontal Reference Pt | Slot | Rig on SLOT#21 WISHBONE 29C-24HZ (320'FSL & 980'FWL, SEC.24) (RKB) to Mean Sea Level |
| Vertical Reference Pt | Rig on SLOT#21 WISHBONE 29C-24HZ (320'FSL & 980'FWL, SEC.24) (RKB) | Rig on SLOT#21 WISHBONE 29C-24HZ (320'FSL & 980'FWL, SEC.24) (RKB) to Mud Line at Slot (SLOT#21 WISHBONE 29C-24HZ (320'FSL & 980'FWL, SEC.24) (RKB)) |
| MD Reference Pt | Rig on SLOT#21 WISHBONE 29C-24HZ (320'FSL & 980'FWL, SEC.24) (RKB) | Section Origin |
| Field Vertical Reference | Mean Sea Level | Section Azimuth |



Planned Wellpath Report

WISHBONE 29C-24HZ (PERMIT) PWP
Page 2 of 7



REFERENCE WELLPATH IDENTIFICATION

| | | | |
|----------|---------------------------------|----------|---|
| Operator | KERR-MCGEE OIL & GAS ONSHORE LP | Slot | SLOT#21 WISHBONE 29C-24HZ (320'FSL & 980'FWL, SEC.24) |
| Area | COLORADO | Well | WISHBONE 29C-24HZ |
| Field | WELD COUNTY (KERR MCGEE) | Wellbore | WISHBONE 29C-24HZ PWB |
| Facility | SEC.24-T2N-R66W | | |

WELLPATH DATA (138 stations) † = interpolated/extrapolated station

| MD [ft] | Inclination [°] | Azimuth [°] | TVD [ft] | Vert Sect [ft] | North [ft] | East [ft] | Latitude | Longitude | DLS [°/100ft] | Comments |
|------------|--------------------|----------------|-------------|-------------------|---------------|--------------|----------------|-----------------|------------------|-------------|
| 0.00† | 0.000 | 158.100 | 0.00 | 0.00 | 0.00 | 0.00 | 40°07'02.622"N | 104°43'53.288"W | 0.00 | |
| 17.00 | 0.000 | 158.100 | 17.00 | 0.00 | 0.00 | 0.00 | 40°07'02.622"N | 104°43'53.288"W | 0.00 | TIE-ON |
| 117.00† | 0.000 | 158.100 | 117.00 | 0.00 | 0.00 | 0.00 | 40°07'02.622"N | 104°43'53.288"W | 0.00 | |
| 217.00† | 0.000 | 158.100 | 217.00 | 0.00 | 0.00 | 0.00 | 40°07'02.622"N | 104°43'53.288"W | 0.00 | |
| 317.00† | 0.000 | 158.100 | 317.00 | 0.00 | 0.00 | 0.00 | 40°07'02.622"N | 104°43'53.288"W | 0.00 | |
| 417.00† | 0.000 | 158.100 | 417.00 | 0.00 | 0.00 | 0.00 | 40°07'02.622"N | 104°43'53.288"W | 0.00 | |
| 517.00† | 0.000 | 158.100 | 517.00 | 0.00 | 0.00 | 0.00 | 40°07'02.622"N | 104°43'53.288"W | 0.00 | |
| 617.00† | 0.000 | 158.100 | 617.00 | 0.00 | 0.00 | 0.00 | 40°07'02.622"N | 104°43'53.288"W | 0.00 | |
| 717.00† | 0.000 | 158.100 | 717.00 | 0.00 | 0.00 | 0.00 | 40°07'02.622"N | 104°43'53.288"W | 0.00 | |
| 817.00† | 0.000 | 158.100 | 817.00 | 0.00 | 0.00 | 0.00 | 40°07'02.622"N | 104°43'53.288"W | 0.00 | |
| 917.00† | 0.000 | 158.100 | 917.00 | 0.00 | 0.00 | 0.00 | 40°07'02.622"N | 104°43'53.288"W | 0.00 | |
| 919.00† | 0.000 | 158.100 | 919.00 | 0.00 | 0.00 | 0.00 | 40°07'02.622"N | 104°43'53.288"W | 0.00 | FOX HILLS |
| 1017.00† | 0.000 | 158.100 | 1017.00 | 0.00 | 0.00 | 0.00 | 40°07'02.622"N | 104°43'53.288"W | 0.00 | |
| 1117.00† | 0.000 | 158.100 | 1117.00 | 0.00 | 0.00 | 0.00 | 40°07'02.622"N | 104°43'53.288"W | 0.00 | |
| 1200.00 | 0.000 | 158.100 | 1200.00 | 0.00 | 0.00 | 0.00 | 40°07'02.622"N | 104°43'53.288"W | 0.00 | BEGIN NUDGE |
| 1217.00† | 0.340 | 158.100 | 1217.00 | -0.05 | -0.05 | 0.02 | 40°07'02.622"N | 104°43'53.288"W | 2.00 | |
| 1317.00† | 2.340 | 158.100 | 1316.97 | -2.21 | -2.22 | 0.89 | 40°07'02.600"N | 104°43'53.277"W | 2.00 | |
| 1417.00† | 4.340 | 158.100 | 1416.79 | -7.60 | -7.62 | 3.06 | 40°07'02.547"N | 104°43'53.249"W | 2.00 | |
| 1517.00† | 6.340 | 158.100 | 1516.35 | -16.22 | -16.26 | 6.54 | 40°07'02.461"N | 104°43'53.204"W | 2.00 | |
| 1617.00† | 8.340 | 158.100 | 1615.53 | -28.05 | -28.11 | 11.30 | 40°07'02.344"N | 104°43'53.143"W | 2.00 | |
| 1700.00 | 10.000 | 158.100 | 1697.47 | -40.29 | -40.38 | 16.23 | 40°07'02.223"N | 104°43'53.079"W | 2.00 | END NUDGE |
| 1717.00† | 10.000 | 158.100 | 1714.21 | -43.02 | -43.12 | 17.33 | 40°07'02.196"N | 104°43'53.065"W | 0.00 | |
| 1817.00† | 10.000 | 158.100 | 1812.69 | -59.10 | -59.23 | 23.81 | 40°07'02.037"N | 104°43'52.982"W | 0.00 | |
| 1917.00† | 10.000 | 158.100 | 1911.17 | -75.17 | -75.34 | 30.29 | 40°07'01.877"N | 104°43'52.898"W | 0.00 | |
| 2017.00† | 10.000 | 158.100 | 2009.65 | -91.25 | -91.46 | 36.77 | 40°07'01.718"N | 104°43'52.815"W | 0.00 | |
| 2117.00† | 10.000 | 158.100 | 2108.13 | -107.32 | -107.57 | 43.24 | 40°07'01.559"N | 104°43'52.731"W | 0.00 | |
| 2217.00† | 10.000 | 158.100 | 2206.61 | -123.40 | -123.68 | 49.72 | 40°07'01.400"N | 104°43'52.648"W | 0.00 | |
| 2317.00† | 10.000 | 158.100 | 2305.09 | -139.47 | -139.79 | 56.20 | 40°07'01.241"N | 104°43'52.565"W | 0.00 | |
| 2417.00† | 10.000 | 158.100 | 2403.57 | -155.55 | -155.90 | 62.67 | 40°07'01.081"N | 104°43'52.481"W | 0.00 | |
| 2517.00† | 10.000 | 158.100 | 2502.05 | -171.62 | -172.01 | 69.15 | 40°07'00.922"N | 104°43'52.398"W | 0.00 | |
| 2617.00† | 10.000 | 158.100 | 2600.53 | -187.70 | -188.13 | 75.63 | 40°07'00.763"N | 104°43'52.315"W | 0.00 | |
| 2717.00† | 10.000 | 158.100 | 2699.01 | -203.77 | -204.24 | 82.10 | 40°07'00.604"N | 104°43'52.231"W | 0.00 | |
| 2817.00† | 10.000 | 158.100 | 2797.50 | -219.85 | -220.35 | 88.58 | 40°07'00.444"N | 104°43'52.148"W | 0.00 | |
| 2839.85 | 10.000 | 158.100 | 2820.00 | -223.52 | -224.03 | 90.06 | 40°07'00.408"N | 104°43'52.129"W | 0.00 | BEGIN DROP |
| 2917.00† | 8.457 | 158.100 | 2896.15 | -234.97 | -235.51 | 94.67 | 40°07'00.295"N | 104°43'52.069"W | 2.00 | |
| 3017.00† | 6.457 | 158.100 | 2995.30 | -246.99 | -247.55 | 99.52 | 40°07'00.176"N | 104°43'52.007"W | 2.00 | |
| 3117.00† | 4.457 | 158.100 | 3094.84 | -255.79 | -256.37 | 103.06 | 40°07'00.088"N | 104°43'51.961"W | 2.00 | |
| 3217.00† | 2.457 | 158.100 | 3194.65 | -261.37 | -261.97 | 105.31 | 40°07'00.033"N | 104°43'51.932"W | 2.00 | |
| 3317.00† | 0.457 | 158.100 | 3294.61 | -263.72 | -264.33 | 106.26 | 40°07'00.010"N | 104°43'51.920"W | 2.00 | |
| 3339.85 | 0.000 | 0.324 | 3317.47 | -263.81 | -264.41 | 106.29 | 40°07'00.009"N | 104°43'51.920"W | 2.00 | END DROP |
| 3417.00† | 0.000 | 0.324 | 3394.61 | -263.81 | -264.41 | 106.29 | 40°07'00.009"N | 104°43'51.920"W | 0.00 | |
| 3517.00† | 0.000 | 0.324 | 3494.61 | -263.81 | -264.41 | 106.29 | 40°07'00.009"N | 104°43'51.920"W | 0.00 | |
| 3617.00† | 0.000 | 0.324 | 3594.61 | -263.81 | -264.41 | 106.29 | 40°07'00.009"N | 104°43'51.920"W | 0.00 | |
| 3717.00† | 0.000 | 0.324 | 3694.61 | -263.81 | -264.41 | 106.29 | 40°07'00.009"N | 104°43'51.920"W | 0.00 | |
| 3817.00† | 0.000 | 0.324 | 3794.61 | -263.81 | -264.41 | 106.29 | 40°07'00.009"N | 104°43'51.920"W | 0.00 | |

REFERENCE WELLPATH IDENTIFICATION

| | | | |
|----------|---------------------------------|----------|---|
| Operator | KERR-MCGEE OIL & GAS ONSHORE LP | Slot | SLOT#21 WISHBONE 29C-24HZ (320'FSL & 980'FWL, SEC.24) |
| Area | COLORADO | Well | WISHBONE 29C-24HZ |
| Field | WELD COUNTY (KERR MCGEE) | Wellbore | WISHBONE 29C-24HZ PWB |
| Facility | SEC.24-T2N-R66W | | |

WELLPATH DATA (138 stations) † = interpolated/extrapolated station

| MD [ft] | Inclination [°] | Azimuth [°] | TVD [ft] | Vert Sect [ft] | North [ft] | East [ft] | Latitude | Longitude | DLS [°/100ft] | Comments |
|----------|-----------------|-------------|----------|----------------|------------|-----------|----------------|-----------------|---------------|-----------------------|
| 3917.00† | 0.000 | 0.324 | 3894.61 | -263.81 | -264.41 | 106.29 | 40°07'00.009"N | 104°43'51.920"W | 0.00 | |
| 4017.00† | 0.000 | 0.324 | 3994.61 | -263.81 | -264.41 | 106.29 | 40°07'00.009"N | 104°43'51.920"W | 0.00 | |
| 4117.00† | 0.000 | 0.324 | 4094.61 | -263.81 | -264.41 | 106.29 | 40°07'00.009"N | 104°43'51.920"W | 0.00 | |
| 4178.39† | 0.000 | 0.324 | 4156.00 | -263.81 | -264.41 | 106.29 | 40°07'00.009"N | 104°43'51.920"W | 0.00 | PARKMAN |
| 4217.00† | 0.000 | 0.324 | 4194.61 | -263.81 | -264.41 | 106.29 | 40°07'00.009"N | 104°43'51.920"W | 0.00 | |
| 4317.00† | 0.000 | 0.324 | 4294.61 | -263.81 | -264.41 | 106.29 | 40°07'00.009"N | 104°43'51.920"W | 0.00 | |
| 4417.00† | 0.000 | 0.324 | 4394.61 | -263.81 | -264.41 | 106.29 | 40°07'00.009"N | 104°43'51.920"W | 0.00 | |
| 4517.00† | 0.000 | 0.324 | 4494.61 | -263.81 | -264.41 | 106.29 | 40°07'00.009"N | 104°43'51.920"W | 0.00 | |
| 4572.39† | 0.000 | 0.324 | 4550.00 | -263.81 | -264.41 | 106.29 | 40°07'00.009"N | 104°43'51.920"W | 0.00 | SUSSEX |
| 4617.00† | 0.000 | 0.324 | 4594.61 | -263.81 | -264.41 | 106.29 | 40°07'00.009"N | 104°43'51.920"W | 0.00 | |
| 4717.00† | 0.000 | 0.324 | 4694.61 | -263.81 | -264.41 | 106.29 | 40°07'00.009"N | 104°43'51.920"W | 0.00 | |
| 4817.00† | 0.000 | 0.324 | 4794.61 | -263.81 | -264.41 | 106.29 | 40°07'00.009"N | 104°43'51.920"W | 0.00 | |
| 4917.00† | 0.000 | 0.324 | 4894.61 | -263.81 | -264.41 | 106.29 | 40°07'00.009"N | 104°43'51.920"W | 0.00 | |
| 5017.00† | 0.000 | 0.324 | 4994.61 | -263.81 | -264.41 | 106.29 | 40°07'00.009"N | 104°43'51.920"W | 0.00 | |
| 5117.00† | 0.000 | 0.324 | 5094.61 | -263.81 | -264.41 | 106.29 | 40°07'00.009"N | 104°43'51.920"W | 0.00 | |
| 5217.00† | 0.000 | 0.324 | 5194.61 | -263.81 | -264.41 | 106.29 | 40°07'00.009"N | 104°43'51.920"W | 0.00 | |
| 5317.00† | 0.000 | 0.324 | 5294.61 | -263.81 | -264.41 | 106.29 | 40°07'00.009"N | 104°43'51.920"W | 0.00 | |
| 5417.00† | 0.000 | 0.324 | 5394.61 | -263.81 | -264.41 | 106.29 | 40°07'00.009"N | 104°43'51.920"W | 0.00 | |
| 5517.00† | 0.000 | 0.324 | 5494.61 | -263.81 | -264.41 | 106.29 | 40°07'00.009"N | 104°43'51.920"W | 0.00 | |
| 5617.00† | 0.000 | 0.324 | 5594.61 | -263.81 | -264.41 | 106.29 | 40°07'00.009"N | 104°43'51.920"W | 0.00 | |
| 5717.00† | 0.000 | 0.324 | 5694.61 | -263.81 | -264.41 | 106.29 | 40°07'00.009"N | 104°43'51.920"W | 0.00 | |
| 5817.00† | 0.000 | 0.324 | 5794.61 | -263.81 | -264.41 | 106.29 | 40°07'00.009"N | 104°43'51.920"W | 0.00 | |
| 5917.00† | 0.000 | 0.324 | 5894.61 | -263.81 | -264.41 | 106.29 | 40°07'00.009"N | 104°43'51.920"W | 0.00 | |
| 6017.00† | 0.000 | 0.324 | 5994.61 | -263.81 | -264.41 | 106.29 | 40°07'00.009"N | 104°43'51.920"W | 0.00 | |
| 6117.00† | 0.000 | 0.324 | 6094.61 | -263.81 | -264.41 | 106.29 | 40°07'00.009"N | 104°43'51.920"W | 0.00 | |
| 6217.00† | 0.000 | 0.324 | 6194.61 | -263.81 | -264.41 | 106.29 | 40°07'00.009"N | 104°43'51.920"W | 0.00 | |
| 6317.00† | 0.000 | 0.324 | 6294.61 | -263.81 | -264.41 | 106.29 | 40°07'00.009"N | 104°43'51.920"W | 0.00 | |
| 6417.00† | 0.000 | 0.324 | 6394.61 | -263.81 | -264.41 | 106.29 | 40°07'00.009"N | 104°43'51.920"W | 0.00 | |
| 6517.00† | 0.000 | 0.324 | 6494.61 | -263.81 | -264.41 | 106.29 | 40°07'00.009"N | 104°43'51.920"W | 0.00 | |
| 6617.00† | 0.000 | 0.324 | 6594.61 | -263.81 | -264.41 | 106.29 | 40°07'00.009"N | 104°43'51.920"W | 0.00 | |
| 6717.00† | 0.000 | 0.324 | 6694.61 | -263.81 | -264.41 | 106.29 | 40°07'00.009"N | 104°43'51.920"W | 0.00 | |
| 6817.00† | 0.000 | 0.324 | 6794.61 | -263.81 | -264.41 | 106.29 | 40°07'00.009"N | 104°43'51.920"W | 0.00 | |
| 6917.00† | 0.000 | 0.324 | 6894.61 | -263.81 | -264.41 | 106.29 | 40°07'00.009"N | 104°43'51.920"W | 0.00 | |
| 6953.43 | 0.000 | 0.324 | 6931.05 | -263.81 | -264.41 | 106.29 | 40°07'00.009"N | 104°43'51.920"W | 0.00 | KOP, BUILD @ 10°/100' |
| 7017.00† | 6.357 | 0.324 | 6994.48 | -260.29 | -260.89 | 106.31 | 40°07'00.044"N | 104°43'51.920"W | 10.00 | |
| 7117.00† | 16.357 | 0.324 | 7092.40 | -240.62 | -241.22 | 106.42 | 40°07'00.238"N | 104°43'51.918"W | 10.00 | |
| 7182.43† | 22.900 | 0.324 | 7154.00 | -218.65 | -219.26 | 106.55 | 40°07'00.455"N | 104°43'51.917"W | 10.00 | SHARON SPRINGS |
| 7217.00† | 26.357 | 0.324 | 7185.42 | -204.25 | -204.85 | 106.63 | 40°07'00.598"N | 104°43'51.915"W | 10.00 | |
| 7250.52† | 29.709 | 0.324 | 7215.00 | -188.49 | -189.10 | 106.72 | 40°07'00.753"N | 104°43'51.914"W | 10.00 | NIOBRARA A |
| 7301.38† | 34.795 | 0.324 | 7258.00 | -161.36 | -161.97 | 106.87 | 40°07'01.021"N | 104°43'51.912"W | 10.00 | NIOBRARA B |
| 7317.00† | 36.357 | 0.324 | 7270.70 | -152.28 | -152.88 | 106.92 | 40°07'01.111"N | 104°43'51.912"W | 10.00 | |
| 7416.03† | 46.260 | 0.324 | 7345.00 | -86.98 | -87.59 | 107.29 | 40°07'01.756"N | 104°43'51.907"W | 10.00 | NIOBRARA C |
| 7417.00† | 46.357 | 0.324 | 7345.67 | -86.29 | -86.89 | 107.30 | 40°07'01.763"N | 104°43'51.907"W | 10.00 | |
| 7517.00† | 56.357 | 0.324 | 7408.04 | -8.28 | -8.89 | 107.74 | 40°07'02.534"N | 104°43'51.901"W | 10.00 | |
| 7617.00† | 66.357 | 0.324 | 7455.91 | 79.37 | 78.76 | 108.24 | 40°07'03.400"N | 104°43'51.895"W | 10.00 | |



Planned Wellpath Report

WISHBONE 29C-24HZ (PERMIT) PWP
Page 4 of 7



REFERENCE WELLPATH IDENTIFICATION

| | | | |
|----------|---------------------------------|----------|---|
| Operator | KERR-MCGEE OIL & GAS ONSHORE LP | Slot | SLOT#21 WISHBONE 29C-24HZ (320'FSL & 980'FWL, SEC.24) |
| Area | COLORADO | Well | WISHBONE 29C-24HZ |
| Field | WELD COUNTY (KERR MCGEE) | Wellbore | WISHBONE 29C-24HZ PWB |
| Facility | SEC.24-T2N-R66W | | |

WELLPATH DATA (138 stations) † = interpolated/extrapolated station

| MD [ft] | Inclination [°] | Azimuth [°] | TVD [ft] | Vert Sect [ft] | North [ft] | East [ft] | Latitude | Longitude | DLS [°/100ft] | Comments |
|------------|--------------------|----------------|-------------|-------------------|---------------|--------------|----------------|-----------------|------------------|---------------|
| 7676.83† | 72.339 | 0.324 | 7477.00 | 135.33 | 134.72 | 108.55 | 40°07'03.953"N | 104°43'51.891"W | 10.00 | FORT HAYS |
| 7717.00† | 76.357 | 0.324 | 7487.84 | 174.00 | 173.39 | 108.77 | 40°07'04.335"N | 104°43'51.888"W | 10.00 | |
| 7777.66† | 82.423 | 0.324 | 7499.00 | 233.60 | 232.98 | 109.11 | 40°07'04.924"N | 104°43'51.884"W | 10.00 | CODELL |
| 7817.00† | 86.357 | 0.324 | 7502.85 | 272.74 | 272.13 | 109.33 | 40°07'05.311"N | 104°43'51.881"W | 10.00 | |
| 7852.75 | 89.932 | 0.324 | 7504.00 | 308.47 | 307.86 | 109.53 | 40°07'05.664"N | 104°43'51.878"W | 10.00 | LANDING POINT |
| 7917.00† | 89.932 | 0.324 | 7504.08 | 372.72 | 372.10 | 109.90 | 40°07'06.299"N | 104°43'51.873"W | 0.00 | |
| 8017.00† | 89.932 | 0.324 | 7504.20 | 472.72 | 472.10 | 110.46 | 40°07'07.287"N | 104°43'51.866"W | 0.00 | |
| 8117.00† | 89.932 | 0.324 | 7504.32 | 572.72 | 572.10 | 111.03 | 40°07'08.276"N | 104°43'51.859"W | 0.00 | |
| 8217.00† | 89.932 | 0.324 | 7504.44 | 672.72 | 672.10 | 111.60 | 40°07'09.264"N | 104°43'51.852"W | 0.00 | |
| 8317.00† | 89.932 | 0.324 | 7504.55 | 772.72 | 772.10 | 112.16 | 40°07'10.252"N | 104°43'51.844"W | 0.00 | |
| 8417.00† | 89.932 | 0.324 | 7504.67 | 872.72 | 872.09 | 112.73 | 40°07'11.240"N | 104°43'51.837"W | 0.00 | |
| 8517.00† | 89.932 | 0.324 | 7504.79 | 972.72 | 972.09 | 113.29 | 40°07'12.228"N | 104°43'51.830"W | 0.00 | |
| 8617.00† | 89.932 | 0.324 | 7504.91 | 1072.72 | 1072.09 | 113.86 | 40°07'13.217"N | 104°43'51.822"W | 0.00 | |
| 8717.00† | 89.932 | 0.324 | 7505.03 | 1172.72 | 1172.09 | 114.43 | 40°07'14.205"N | 104°43'51.815"W | 0.00 | |
| 8817.00† | 89.932 | 0.324 | 7505.15 | 1272.72 | 1272.09 | 114.99 | 40°07'15.193"N | 104°43'51.808"W | 0.00 | |
| 8917.00† | 89.932 | 0.324 | 7505.27 | 1372.72 | 1372.09 | 115.56 | 40°07'16.181"N | 104°43'51.800"W | 0.00 | |
| 9017.00† | 89.932 | 0.324 | 7505.38 | 1472.72 | 1472.08 | 116.13 | 40°07'17.169"N | 104°43'51.793"W | 0.00 | |
| 9117.00† | 89.932 | 0.324 | 7505.50 | 1572.72 | 1572.08 | 116.69 | 40°07'18.158"N | 104°43'51.786"W | 0.00 | |
| 9217.00† | 89.932 | 0.324 | 7505.62 | 1672.72 | 1672.08 | 117.26 | 40°07'19.146"N | 104°43'51.779"W | 0.00 | |
| 9317.00† | 89.932 | 0.324 | 7505.74 | 1772.72 | 1772.08 | 117.82 | 40°07'20.134"N | 104°43'51.771"W | 0.00 | |
| 9417.00† | 89.932 | 0.324 | 7505.86 | 1872.72 | 1872.08 | 118.39 | 40°07'21.122"N | 104°43'51.764"W | 0.00 | |
| 9517.00† | 89.932 | 0.324 | 7505.98 | 1972.72 | 1972.08 | 118.96 | 40°07'22.110"N | 104°43'51.757"W | 0.00 | |
| 9617.00† | 89.932 | 0.324 | 7506.10 | 2072.72 | 2072.07 | 119.52 | 40°07'23.098"N | 104°43'51.749"W | 0.00 | |
| 9717.00† | 89.932 | 0.324 | 7506.22 | 2172.72 | 2172.07 | 120.09 | 40°07'24.087"N | 104°43'51.742"W | 0.00 | |
| 9817.00† | 89.932 | 0.324 | 7506.33 | 2272.72 | 2272.07 | 120.65 | 40°07'25.075"N | 104°43'51.735"W | 0.00 | |
| 9917.00† | 89.932 | 0.324 | 7506.45 | 2372.72 | 2372.07 | 121.22 | 40°07'26.063"N | 104°43'51.728"W | 0.00 | |
| 10017.00† | 89.932 | 0.324 | 7506.57 | 2472.72 | 2472.07 | 121.79 | 40°07'27.051"N | 104°43'51.720"W | 0.00 | |
| 10117.00† | 89.932 | 0.324 | 7506.69 | 2572.72 | 2572.07 | 122.35 | 40°07'28.039"N | 104°43'51.713"W | 0.00 | |
| 10217.00† | 89.932 | 0.324 | 7506.81 | 2672.72 | 2672.06 | 122.92 | 40°07'29.028"N | 104°43'51.706"W | 0.00 | |
| 10317.00† | 89.932 | 0.324 | 7506.93 | 2772.72 | 2772.06 | 123.49 | 40°07'30.016"N | 104°43'51.698"W | 0.00 | |
| 10417.00† | 89.932 | 0.324 | 7507.05 | 2872.72 | 2872.06 | 124.05 | 40°07'31.004"N | 104°43'51.691"W | 0.00 | |
| 10517.00† | 89.932 | 0.324 | 7507.17 | 2972.72 | 2972.06 | 124.62 | 40°07'31.992"N | 104°43'51.684"W | 0.00 | |
| 10617.00† | 89.932 | 0.324 | 7507.28 | 3072.72 | 3072.06 | 125.18 | 40°07'32.980"N | 104°43'51.676"W | 0.00 | |
| 10717.00† | 89.932 | 0.324 | 7507.40 | 3172.72 | 3172.06 | 125.75 | 40°07'33.969"N | 104°43'51.669"W | 0.00 | |
| 10817.00† | 89.932 | 0.324 | 7507.52 | 3272.72 | 3272.05 | 126.32 | 40°07'34.957"N | 104°43'51.662"W | 0.00 | |
| 10917.00† | 89.932 | 0.324 | 7507.64 | 3372.72 | 3372.05 | 126.88 | 40°07'35.945"N | 104°43'51.655"W | 0.00 | |
| 11017.00† | 89.932 | 0.324 | 7507.76 | 3472.72 | 3472.05 | 127.45 | 40°07'36.933"N | 104°43'51.647"W | 0.00 | |
| 11117.00† | 89.932 | 0.324 | 7507.88 | 3572.72 | 3572.05 | 128.02 | 40°07'37.921"N | 104°43'51.640"W | 0.00 | |
| 11217.00† | 89.932 | 0.324 | 7508.00 | 3672.72 | 3672.05 | 128.58 | 40°07'38.910"N | 104°43'51.633"W | 0.00 | |
| 11317.00† | 89.932 | 0.324 | 7508.11 | 3772.72 | 3772.05 | 129.15 | 40°07'39.898"N | 104°43'51.625"W | 0.00 | |
| 11417.00† | 89.932 | 0.324 | 7508.23 | 3872.72 | 3872.04 | 129.71 | 40°07'40.886"N | 104°43'51.618"W | 0.00 | |
| 11517.00† | 89.932 | 0.324 | 7508.35 | 3972.72 | 3972.04 | 130.28 | 40°07'41.874"N | 104°43'51.611"W | 0.00 | |
| 11617.00† | 89.932 | 0.324 | 7508.47 | 4072.72 | 4072.04 | 130.85 | 40°07'42.862"N | 104°43'51.604"W | 0.00 | |
| 11717.00† | 89.932 | 0.324 | 7508.59 | 4172.72 | 4172.04 | 131.41 | 40°07'43.851"N | 104°43'51.596"W | 0.00 | |
| 11817.00† | 89.932 | 0.324 | 7508.71 | 4272.72 | 4272.04 | 131.98 | 40°07'44.839"N | 104°43'51.589"W | 0.00 | |



Planned Wellpath Report

WISHBONE 29C-24HZ (PERMIT) PWP
Page 5 of 7



REFERENCE WELLPATH IDENTIFICATION

| | | | |
|----------|---------------------------------|----------|---|
| Operator | KERR-MCGEE OIL & GAS ONSHORE LP | Slot | SLOT#21 WISHBONE 29C-24HZ (320'FSL & 980'FWL, SEC.24) |
| Area | COLORADO | Well | WISHBONE 29C-24HZ |
| Field | WELD COUNTY (KERR MCGEE) | Wellbore | WISHBONE 29C-24HZ PWB |
| Facility | SEC.24-T2N-R66W | | |

WELLPATH DATA (138 stations) † = interpolated/extrapolated station

| MD [ft] | Inclination [°] | Azimuth [°] | TVD [ft] | Vert Sect [ft] | North [ft] | East [ft] | Latitude | Longitude | DLS [°/100ft] | Comments |
|------------|--------------------|----------------|-------------|-------------------|---------------|--------------|----------------|-----------------|------------------|-------------|
| 11917.00† | 89.932 | 0.324 | 7508.83 | 4372.72 | 4372.04 | 132.54 | 40°07'45.827"N | 104°43'51.582"W | 0.00 | |
| 12017.00† | 89.932 | 0.324 | 7508.95 | 4472.72 | 4472.03 | 133.11 | 40°07'46.815"N | 104°43'51.574"W | 0.00 | |
| 12062.62 | 89.932 | 0.324 | 7509.00† | 4518.34 | 4517.66 | 133.37 | 40°07'47.266"N | 104°43'51.571"W | 0.00 | TOTAL DEPTH |

HOLE & CASING SECTIONS - Ref Wellbore: WISHBONE 29C-24HZ PWB Ref Wellpath: WISHBONE 29C-24HZ (PERMIT) PWP

| String/Diameter | Start MD [ft] | End MD [ft] | Interval [ft] | Start TVD [ft] | End TVD [ft] | Start N/S [ft] | Start E/W [ft] | End N/S [ft] | End E/W [ft] |
|-------------------------|------------------|----------------|------------------|-------------------|-----------------|-------------------|-------------------|-----------------|-----------------|
| 13.5in Open Hole | 17.00 | 1000.00 | 983.00 | 17.00 | 1000.00 | 0.00 | 0.00 | 0.00 | 0.00 |
| 9.625in Casing Surface | 17.00 | 1000.00 | 983.00 | 17.00 | 1000.00 | 0.00 | 0.00 | 0.00 | 0.00 |
| 8.75in Open Hole | 1000.00 | 7852.75 | 6852.75 | 1000.00 | 7504.00 | 0.00 | 0.00 | 307.85 | 109.53 |
| 7in Casing Intermediate | 17.00 | 7852.75 | 7835.75 | 17.00 | 7504.00 | 0.00 | 0.00 | 307.85 | 109.53 |
| 6.125in Open Hole | 7852.75 | 12062.62 | 4209.87 | 7504.00 | 7509.00 | 307.85 | 109.53 | 4517.66 | 133.37 |
| 4.5in Casing Production | 17.00 | 12062.62 | 12045.62 | 17.00 | 7509.00 | 0.00 | 0.00 | 4517.66 | 133.37 |



Planned Wellpath Report

WISHBONE 29C-24HZ (PERMIT) PWP
Page 6 of 7



REFERENCE WELLPATH IDENTIFICATION

| | | | |
|----------|---------------------------------|----------|---|
| Operator | KERR-MCGEE OIL & GAS ONSHORE LP | Slot | SLOT#21 WISHBONE 29C-24HZ (320'FSL & 980'FWL, SEC.24) |
| Area | COLORADO | Well | WISHBONE 29C-24HZ |
| Field | WELD COUNTY (KERR MCGEE) | Wellbore | WISHBONE 29C-24HZ PWB |
| Facility | SEC.24-T2N-R66W | | |

TARGETS

| Name | MD [ft] | TVD [ft] | North [ft] | East [ft] | Grid East [US ft] | Grid North [US ft] | Latitude | Longitude | Shape |
|---|------------|-------------|---------------|--------------|----------------------|-----------------------|----------------|-----------------|---------|
| SEC.24 SECTION LINES | | 22.00 | -3.23 | -562.78 | 3214370.72 | 1286534.33 | 40°07'02.590"N | 104°44'00.532"W | polygon |
| HELGOth HEIRS #2 150' RADIUS | | 39.00 | 533.99 | 3876.02 | 3218804.51 | 1287109.98 | 40°07'07.896"N | 104°43'03.396"W | circle |
| HELGOth HEIRS UNIT #1 150' RADIUS | | 39.00 | 333.33 | -310.75 | 3214619.81 | 1286873.05 | 40°07'05.916"N | 104°43'57.288"W | circle |
| WARNER #1 150' RADIUS | | 39.00 | 3874.46 | 3014.20 | 3217913.81 | 1290442.71 | 40°07'40.908"N | 104°43'14.484"W | circle |
| WARNER #2 150' RADIUS | | 39.00 | 4322.36 | -285.54 | 3214610.45 | 1290861.97 | 40°07'45.336"N | 104°43'56.964"W | circle |
| 1) WISHBONE 29C-24HZ BHL ON PLAT (460'FNL & 1088'FWL, SEC.24) | 12062.62 | 7509.00 | 4517.66 | 133.37 | 3215027.64 | 1291060.89 | 40°07'47.266"N | 104°43'51.571"W | point |
| SEC. 24 HARDLINES (460' SETBACKS) | | 7622.00 | -3.23 | -562.78 | 3214370.72 | 1286534.33 | 40°07'02.590"N | 104°44'00.532"W | polygon |

SURVEY PROGRAM - Ref Wellbore: WISHBONE 29C-24HZ PWB Ref Wellpath: WISHBONE 29C-24HZ (PERMIT) PWP

| Start MD [ft] | End MD [ft] | Positional Uncertainty Model | Log Name/Comment | Wellbore |
|------------------|----------------|------------------------------|------------------|-----------------------|
| 17.00 | 7852.75 | NaviTrak (MagCorr) | | WISHBONE 29C-24HZ PWB |
| 7852.75 | 12062.62 | OnTrak (MagCorr) | | WISHBONE 29C-24HZ PWB |



Planned Wellpath Report

WISHBONE 29C-24HZ (PERMIT) PWP
Page 7 of 7



| REFERENCE WELLPATH IDENTIFICATION | | | |
|-----------------------------------|---------------------------------|----------|---|
| Operator | KERR-MCGEE OIL & GAS ONSHORE LP | Slot | SLOT#21 WISHBONE 29C-24HZ (320'FSL & 980'FWL, SEC.24) |
| Area | COLORADO | Well | WISHBONE 29C-24HZ |
| Field | WELD COUNTY (KERR MCGEE) | Wellbore | WISHBONE 29C-24HZ PWB |
| Facility | SEC.24-T2N-R66W | | |

| WELLPATH COMMENTS | | | | |
|-------------------|--------------------|----------------|-------------|----------------|
| MD [ft] | Inclination [°] | Azimuth [°] | TVD [ft] | Comment |
| 919.00 | 0.000 | 158.100 | 919.00 | FOX HILLS |
| 4178.39 | 0.000 | 0.324 | 4156.00 | PARKMAN |
| 4572.39 | 0.000 | 0.324 | 4550.00 | SUSSEX |
| 7182.43 | 22.900 | 0.324 | 7154.00 | SHARON SPRINGS |
| 7250.52 | 29.709 | 0.324 | 7215.00 | NIOBRARA A |
| 7301.38 | 34.795 | 0.324 | 7258.00 | NIOBRARA B |
| 7416.03 | 46.260 | 0.324 | 7345.00 | NIOBRARA C |
| 7676.83 | 72.339 | 0.324 | 7477.00 | FORT HAYS |
| 7777.66 | 82.423 | 0.324 | 7499.00 | CODELL |