

BISON OIL WELL CEMENTING, INC.

1738 Wynkoop St., Ste. 102
Denver, Colorado 80202
Phone: 303-296-3010
Fax: 303-298-8143
E-mail: bisonoil1@qwestoffice.net



SERVICE INVOICE

Nº 11749

WELL NO. AND FARM <i>Saver F33-274M</i>		COUNTY <i>Weld</i>	STATE <i>CO</i>	DATE <i>3-13-13</i>
CHARGE TO <i>Noble</i>		WELL LOCATION SEC. <i>33</i> TWP. <i>5</i> RANGE <i>65</i>	CONTRACTOR <i>Ensign 121</i>	
		DELIVERED TO	LOCATION <i>1 SHOP</i>	CODE
		SHIPPED VIA <i>3104</i>	LOCATION <i>2 50 + 41</i>	CODE
		TYPE AND PURPOSE OF JOB <i>Surface P.p.</i>	LOCATION <i>3 SHOP</i>	CODE
			WELL TYPE <i>011-GAS</i>	CODE

PRICE REFERENCE	DESCRIPTION	UNITS		UNIT PRICE	AMOUNT	
		QTY.	MEAS.			
	Pump Charge	1	EA	1400 ⁰⁰	1400	00
	BEN III 3% BFLA-1 251BS/KM BFLA-1	328	SECS	18 ⁷⁰	6133	60
	BC14-1	4	QTS	7 ⁵⁰	30	00
	Dye	16	OZ	15 ⁰⁰	240	00
	Milage 150 per m.k 60 m.k min	3	EA	180 ⁰⁰	540	00
	Data	1	EA	225 ⁰⁰	225	00
	Ensign 121					
	Saver F33 717-1111					
	136666					
	Dr.					
	01.1 00117					
	8568.60	Total Weight	Loaded Miles	Ton Miles		

If this account is not paid within 30 days of invoice date a FINANCE CHARGE will be made. Computed at a single monthly rate of 1 1/4% which is equal to an ANNUAL PERCENTAGE RATE OF 18%.

TAX REFERENCES

John M Taylor 3-13-13
Brett Fisher

"TAXES WILL BE ADDED AT CORPORATE OFFICE"

SUB TOTAL

8568 60

TAX

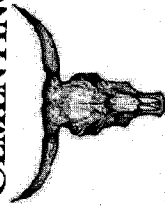
TOTAL

SUBJECT TO CORRECTION

John M Taylor
Customer or His Agent

M. K. Roach
Bison Oil Well Cementing, Inc. Representative

Customers hereby acknowledges and specifically agrees to the terms and conditions on this work order, including, without limitation, the provisions on the reverse side hereof which include the release and indemnity.



INVOICE #

LOCATION

FOREMAN

E-mail: bisonoil1@qwestoffice.net

Treatment Report Page 2

DESCRIPTION OF JOB EVENTS

Safety Meeting	Displace 1			Displace 2			Displace 3			Displace 4			Displace 5		
	BBLs	Time	PSI	BBLs	Time	PSI	BBLs	Time	PSI	BBLs	Time	PSI	BBLs	Time	PSI
MIRU	0			0			0			0			0		
CIRCULATE	10	6:43	300	10			10			10			10		
Drop Plug	20	6:45	390	20			20			20			20		
	30	6:47	350	30			30			30			30		
	40	6:51	310	40			40			40			40		
	50	6:53	310	50			50			50			50		
M & P	60	6:53	710	60			60			60			60		
Time	70			70			70			70			70		
6:37 PM	80			80			80			80			80		
6:37 PM	90			90			90			90			90		
	100			100			100			100			100		
	110			110			110			110			110		
	120			120			120			120			120		
	130			130			130			130			130		
	140			140			140			140			140		
	150			150			150			150			150		

Notes: Displace 45 B34 at H20 Pump Plug 150 I.H. PSI WAT Bep. min Release PSI
Flow Collar held

* STOP Pumping 50 Rq Could switch to P.T

APPROVED WITH 600 SDRS PERMIT 1694 RCL 1602 DEC 10 1981 SUGAR

X

Work Performed

X

Title

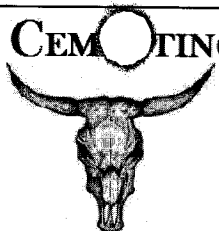
Date _____

Date _____

8-13-13

BISON OIL WELL CEMENTING, INC.

1547 Gaylord Street
Denver, Colorado 80206
Phone: 303-296-3010
Fax: 303-298-8143
E-mail: bisonoil1@qwestoffice.net



INVOICE #
LOCATION
FOREMAN

11749
41+50
Mike Rasmussen

TREATMENT REPORT

DATE 3-13-13	WELL NAME SAUER F33-P7H	SECTION 33	TWP 5	RGE 65	COUNTY WCD
BILL TO Noble		CONSULTANT Mike			
OWNER Noble		RIG NAME & NUMBER Ensign 121			
MAILING ADDRESS		DISTANCE TO LOCATION 15 m.i.		UNITS ON LOCATION 4019 + 4203 4023	
CITY		TIME REQUESTED 2:30		TIME ARRIVED ON LOCATION 2:00	
STATE, ZIP		TIME LEFT LOCATION 8:00 pm			

WELL DATA

Cement Makeup

HOLE SIZE 13 3/4	TUBING SIZE	PERFORATIONS	Cement Blend BFN III 3% BCL A1 .2510 BFL A1
TOTAL DEPTH 630	TUBING DEPTH	SHOTS/FT	Cement - Specs lbs 152 Yield 1.27 Water Requirements 5.89
CASING SIZE 9 5/8	TUBING WEIGHT	OPEN HOLE	Annulus Factor .434 .5255 4782 Capacity Factor .0773
CASING DEPTH 624	TUBING CONDITION	TREATMENT VIA	TYPE OF TREATMENT <input checked="" type="checkbox"/> Surface Pipe <input type="checkbox"/> Production <input type="checkbox"/> Squeeze <input type="checkbox"/> MISC Pump <input type="checkbox"/> P&A
CASING WEIGHT 36#	PACKER DEPTH		
CASING CONDITION Good	HYD HHP = RATE X PRESSURE / 40.8 % Excess 1090 BBL to Pit 10		
Max Rate 3.7			
Max Pressure 400			

DESCRIPTION OF JOB EVENTS

Safety meeting. Rig up. ISA. PSI TEST 500 BBLs SPACER, mix + Pump 385 Sks Cement (30% Excess) at 15.2 at 1.27 gpd, or until Company stops us. Release Plug Displace 45 BBLs. No Bump Plug 150 PSI over lift. Wait Couple min Release PSI Flow Collar held Bump Plug 1/2 BBL over. Left location 272 Sks Cement 10 gpd KCL @ Dye 50 BBLs sign.

x Michael Mays
Authorization To Proceed

W.S.S.
Title

x 3-13-13
Date



Bison Oil Well Cementing, Inc
1738 Wynkoop St., Ste. 102
Denver, CO 80202
303-296-3010
www.Bisonoilwell.com

Cementing Customer Satisfaction Survey

Service Date 3-13-13
Invoice Amount _____
Well Name SAUER
Well Location 50+41
County Weld
SEC/TWP/RNG 33 5 - 65
State CO
Supervisor Name Mike Rank
Employee Name _____

Invoice Number 11749
Well Permit Number _____
Well Type Gas
Well Number P33-77/HW
Lease _____
Job Type Sutpu
Company Name NOBLE
Customer Representative m.k
Customer Phone Number _____

John
mark Monte

Exposure Hours (Per Employee)

7

Total Exposure Hours _____

Did we encounter any problems on this job? Yes / No No

To Be Completed By Customer

Rating/Description

- 5 - Superior Performance (Established new quality / performance standards)
- 4 - Exceeded Expectations (Provided more than what was required / expected)
- 3 - Met Expectations (Did what was expected)
- 2 - Below Expectations (Job problems / failures occurred [* Recovery made])
- 1 - Poor Performance (Job problems / failures occurred [* Some recovery made])

* Recovery: resolved issue(s) on jobsite in a timely and professional manner

Opportunity

- Best Practices
- Potential Best Practice
- Prevention/Improvement

RATING / CATEGORY

- 4 Personnel -
- 4 Equipment -
- 4 Job Design -
- 4 Product / Material -
- 5 Health & Safety -
- 5 Environmental -
- 5 Timeliness -
- 4 Condition / Appearance -
- 5 Communication -
- Improvement -

CUSTOMER SATISFACTION RATING

- Did our personnel perform to your satisfaction ?
- Did our equipment perform to your satisfaction ?
- Did we perform the job to the agreed upon design ?
- Did our products and materials perform as you expected ?
- Did we perform in a safe and careful manner (Pre / post mtgs, PPE, TSMR, etc..) ?
- Did we perform in an environmentally sound manner (Spills, leaks, cleanup, etc..) ?
- Was job performed as scheduled (On time to site, accessible to customer, completed when expected)?
- Did the equipment condition and appearance meet your expectation?
- How well did our personnel communicate during mobilization, rig up, and job execution?
- What can we do to improve our service?

Please Circle:

- Yes / No - Did an accident or injury occur?
- Yes / No - Did an injury requiring medical treatment occur?
- Yes / No - Did a first-aid injury occur?
- Yes / No - Did a vehicle accident occur?
- Yes / No - Was a post-job safety meeting held?

Additional Comments:

Please Circle:

- Yes / No - Was a pre-job safety meeting held?
- Yes / No - Was a job safety analysis completed?
- Yes / No - Were emergency services discussed?
- Yes / No - Did environmental incident occur?
- Yes / No - Did any near misses occur?

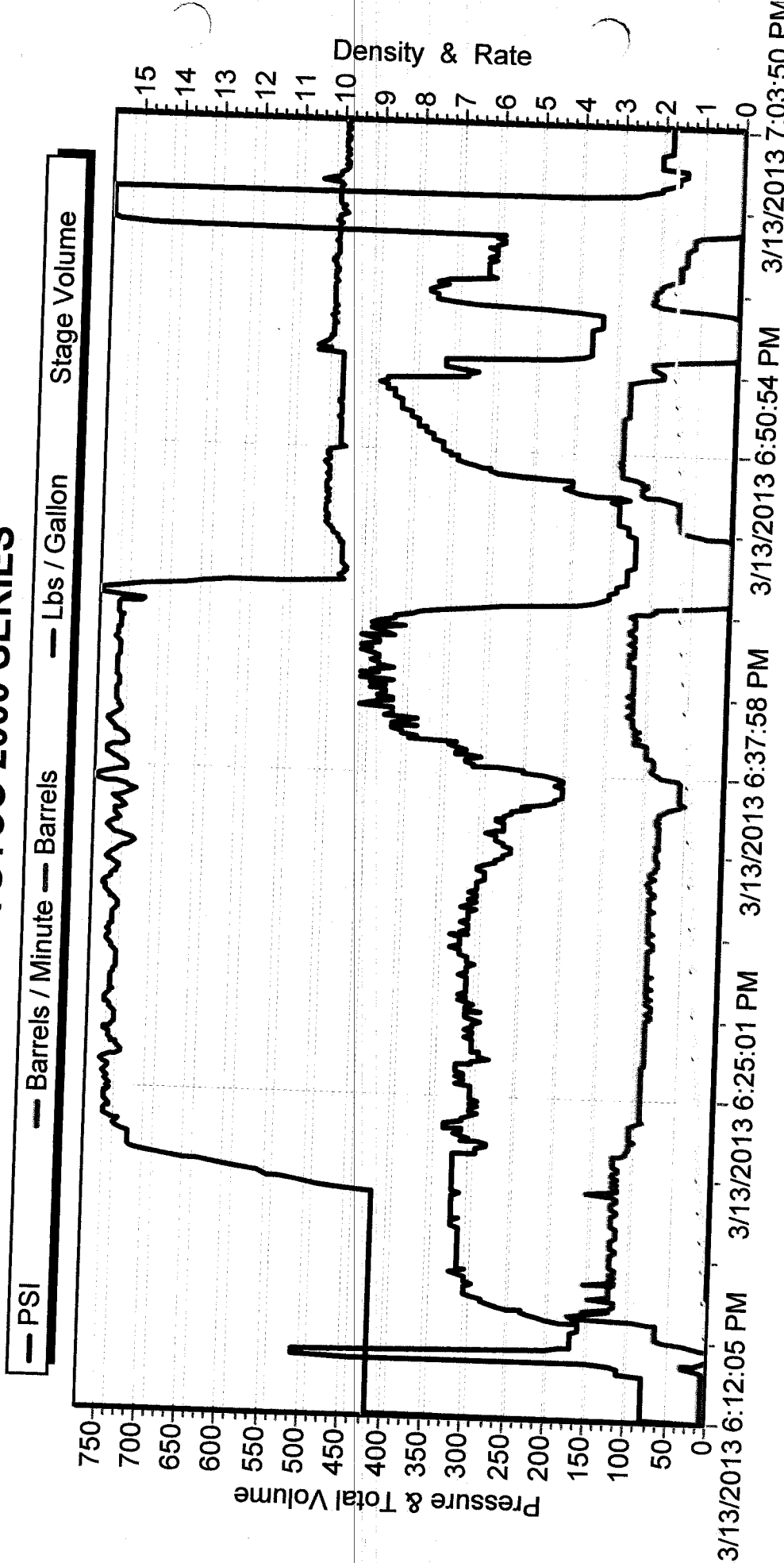
THE INFORMATION HEREIN IS CORRECT -

John M. Taylor
Customer Representative's Signature

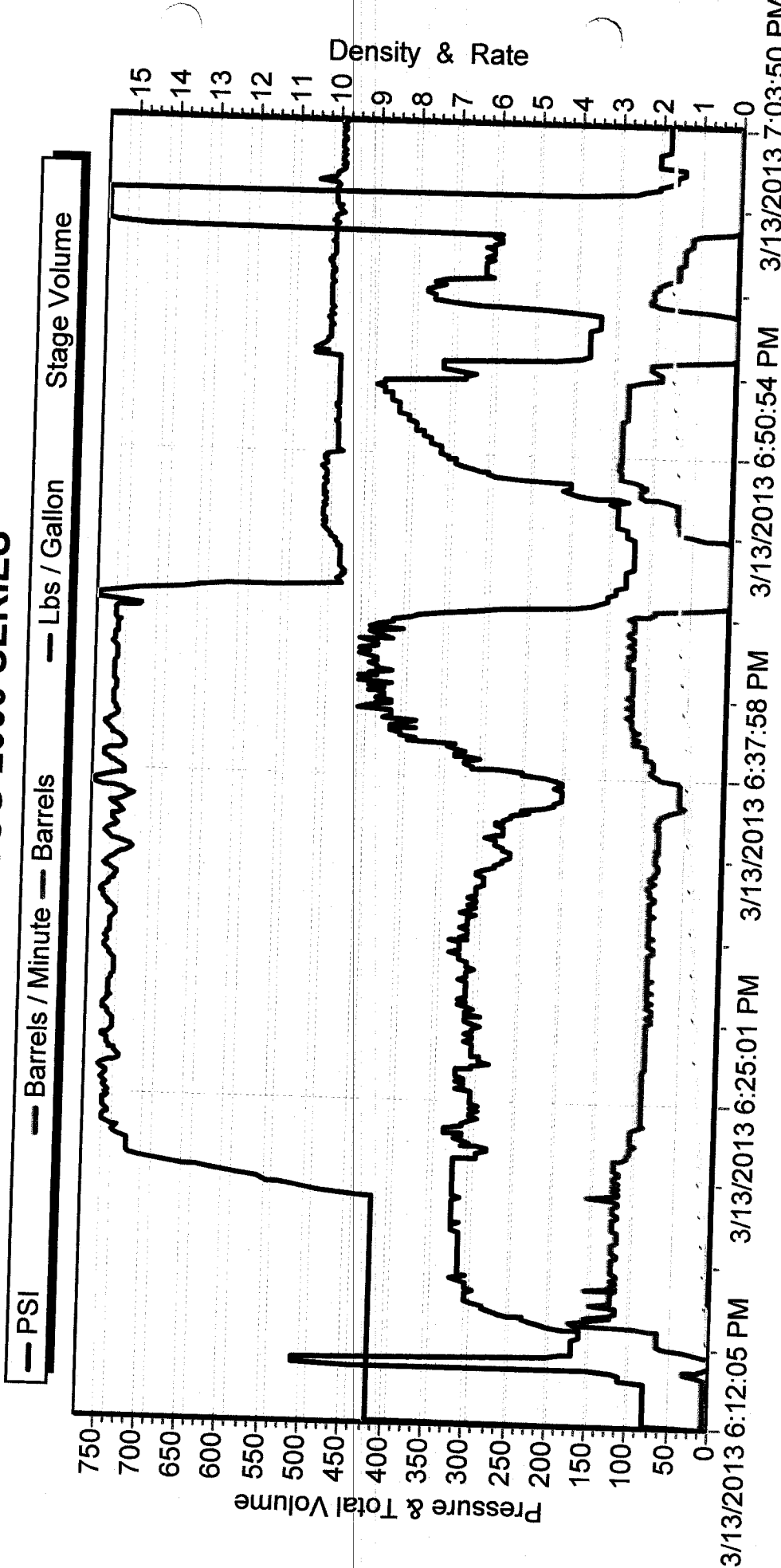
3-13-13
Date

Any additional Customer Comments or HSE concerns should be described on the back of this form

M/D TOTCO 2000 SERIES



M/D TOTCO 2000 SERIES



**BISON****BISON OILWELL CEMENTING JOB SAFETY ANALYSIS WORKSHEET**

JOB/TASK: SURFACE CASING CEMENTING		CEMENTER/SUPERVISOR:		PAGE 1 OF 2
WELL NAME: SAUER F-33 77-HN		LOCATION: WCR 50 41		DATE: 03/13/2013
OPERATOR: NOBEL		RIG # 121		INVOICE # 11749
CONSULTANT: MIKE				
PPE REQUIRED: <input type="checkbox"/> FR Coveralls <input type="checkbox"/> Safety Glasses <input type="checkbox"/> Steel Toe Boots <input type="checkbox"/> Impact Gloves <input type="checkbox"/> Hard Hat <input type="checkbox"/> Safety Glasses <input type="checkbox"/> Reflective Vest		ADDITIONAL PPE (based on job specific hazards) <input type="checkbox"/> Goggles <input type="checkbox"/> Faceshield <input type="checkbox"/> Chemical Resistant Gloves <input type="checkbox"/> Chemical Resistant Clothing <input type="checkbox"/> Air Purifying Respirator <input type="checkbox"/> Supplied Air Respirator <input type="checkbox"/> Personal H2S Monitor <input type="checkbox"/> Personal Methane Monitor		
JOB STEPS		POTENTIAL HAZARDS		RECOMMENDED ACTION OR PROCEDURE
1. Review JSA	Misunderstanding	Misunderstanding	Clarify job and associated hazards and safety concerns	
2. Conduct pre job safety meeting	Misunderstanding	Misunderstanding	-Hold safety meeting with all personnel on location, ensure everyone pays attention to ensure they understand their role and responsibility during the job -Review treatment report with consultant and attain signature for authorization to proceed -Identify and address short service employees (SSE) who are on location	
3. Move trucks in and rig up equipment	Other traffic on location, overhead lines, pinch points, heavy lifting, slips/falls		-Coordinate with well site supervisor for directions on where and when to park the equipment -All Bison crew members walk the location prior to driving in to access specific hazards -Utilize spotters when trucks are in motion -Establish buffer zone around equipment utilizing cones and caution tape -Cementer follows up to ensure connections are secure -Lift with your legs and use teamwork when rigging up -Utilize reflective vests and wands to increase visibility at night -Deploy spill berms and buckets	
4. Raise cement head and hoses to rig floor	Overhead work, improper hookup/load not properly secured, poor communication between ground personnel and crane/tugger operator		-Inspect slings, chains and hooks prior to lift -Ensure line of sight with crane/tugger operator is maintained throughout the lift and hand signals are understood -Ensure no personnel are under suspended equipment -Utilize a tag line to control the load	
5. Connect Cement head/swage/pin, chickens and hoses.	Working in a congested area, pinch points, swinging hammers, slippery rig floor		-Only Bison personnel install the cement head and hoses -Maintain line of sight and communication with crane/tugger operator -Remove non-essential personnel from rig floor, wait until other activity is done -Rig crew does not install chains until head and hoses are installed -Ensure a clear path when swinging a hammer -Ensure all fittings and hoses have proper pressure rating for the job and fall within the parameters of the <i>Bison Oilwell Iron Inspection Program</i>	
6. Pressure test lines	Equipment falling under high pressures	Test to: PSI: 500 Maximum pressure allowed for job: PSI: 1750	-Ensure rig floor is clear and personnel are away from hoses prior to test -Establish buffer area around high pressure hoses -Lines are checked from a distance and using pressure gauges	Pressure relief valve set to: 1750 PSI Max. pump pressure: 5000 PSI
7. Pump Spacer (dye marker)/Mix and Pump Cement	Serious injury from high pressure line failure or catastrophic equipment failure. Casing hydraulicking from hole, causing injury. Burns or skin irritation from splashing cement, uncontrolled spills		-Pressure test prior to job, utilize heavy duty hose hobbles and pressure relief valve -Keep rig floor and buffer area clear while pumping -Utilize proper PPE -Have access to water to rinse affected skin	

**BISON****BISON OILWELL CEMENTING JOB SAFETY ANALYSIS WORKSHEET**

8. Drop plug		-Deploy spill berms and buckets -Utilize 3 points of contact while descending/climbing ladder and stairs -Have visual contact between cementer and pump operator before pump is engaged		
9. Displacement		Slips, trips, falls. Miscommunication between pump operator and cementer, pressure against a closed stop Unexpected pressure associated with resuming of pumping, casing hydraulizing from hole, serious injury from high pressure line failure or catastrophic equipment failure.		
10. Bump plug-Test float and release pressure		Pressure jumps before expected (calculated) displacement. Pressure jumps rapidly and higher than expected		
11. Pressure test casing (if required)		Test to: <input type="text"/> PSI- FOR: MIN- <input type="text"/>	Serious injury from high pressure line or catastrophic equipment failure	
12. Wash up / rig down		Splashing cement slurry, heavy lifting, pinch points, unsecured hoses		
13. Depart location		Other traffic and personnel and location, overhead lines		
OTHER HAZARDS SPECIFIC TO LOCATION OR ENVIRONMENT NOT ADDRESSED ABOVE:				
DESIGNATED EMERGENCY MUSTER AREA:		NEAREST EMERGENCY MEDICAL FACILITY (OTHER THAN 911):		
ACCESS ROAD		GREELEY MED CENTER		