

Company Newfield Production  
Well Banta Ridge Fed 6-18-1-103  
Field Banta Ridge  
County Rio Blanco  
State CO

Company Foundation Energy LLC.  
Well Banta Ridge Fed 6-18-1-103  
Field Banta Ridge  
County Rio Blanco State CO

Location: API #: 05-103-11891  
SHL: 122' FSL & 647' FWL  
BHL: 1957' FSL & 1807' FWL  
SEC 18 TWP 1S RGE 103W  
Permanent Datum Ground Level Elevation 6055'  
Log Measured From Kelly Bushing 10' Above G.L.  
Drilling Measured From Kelly Bushing  
Other Services  
K.B. 6065'  
D.F. 6065'  
G.L. 6055'

Date 10-3-12

Run Number	One
Depth Driller	4900'
Depth Logger	4840'
Bottom Logged Interval	4836'
Top Log Interval	Surface
Open Hole Size	7 7/8"
Type Fluid	Water
Density / Viscosity	///
Max. Recorded Temp.	120 Deg F. OH
Estimated Cement Top	42'
Time Well Ready	Crane
Time Logger on Bottom	9:20 A.M.
Equipment Number	407
location	Roosevelt
Recorded By	Reynolds
Witnessed By	Mr. Tanner Bishop

Borehole Record		Tubing Record					
Run Number	Bit	From	To	Size	Weight	From	To

Casing Record	Size	Wgt/Ft	Top	Bottom
Surface String	8 5/8"	24#	0	522'
Prot. String				
Production String	4 1/2"	11.6#	0	N/A
Liner				

<<< Fold Here >>>

All interpretations are opinions based on inferences from electrical or other measurements and we cannot and do not guarantee the accuracy or correctness of any interpretation, and we shall not, except in the case of gross or willful negligence on our part, be liable or responsible for any loss, costs, damages, or expenses incurred or sustained by anyone resulting from any interpretation made by any of our officers, agents or employees. These interpretations are also subject to our general terms and conditions set out in our current Price Schedule.

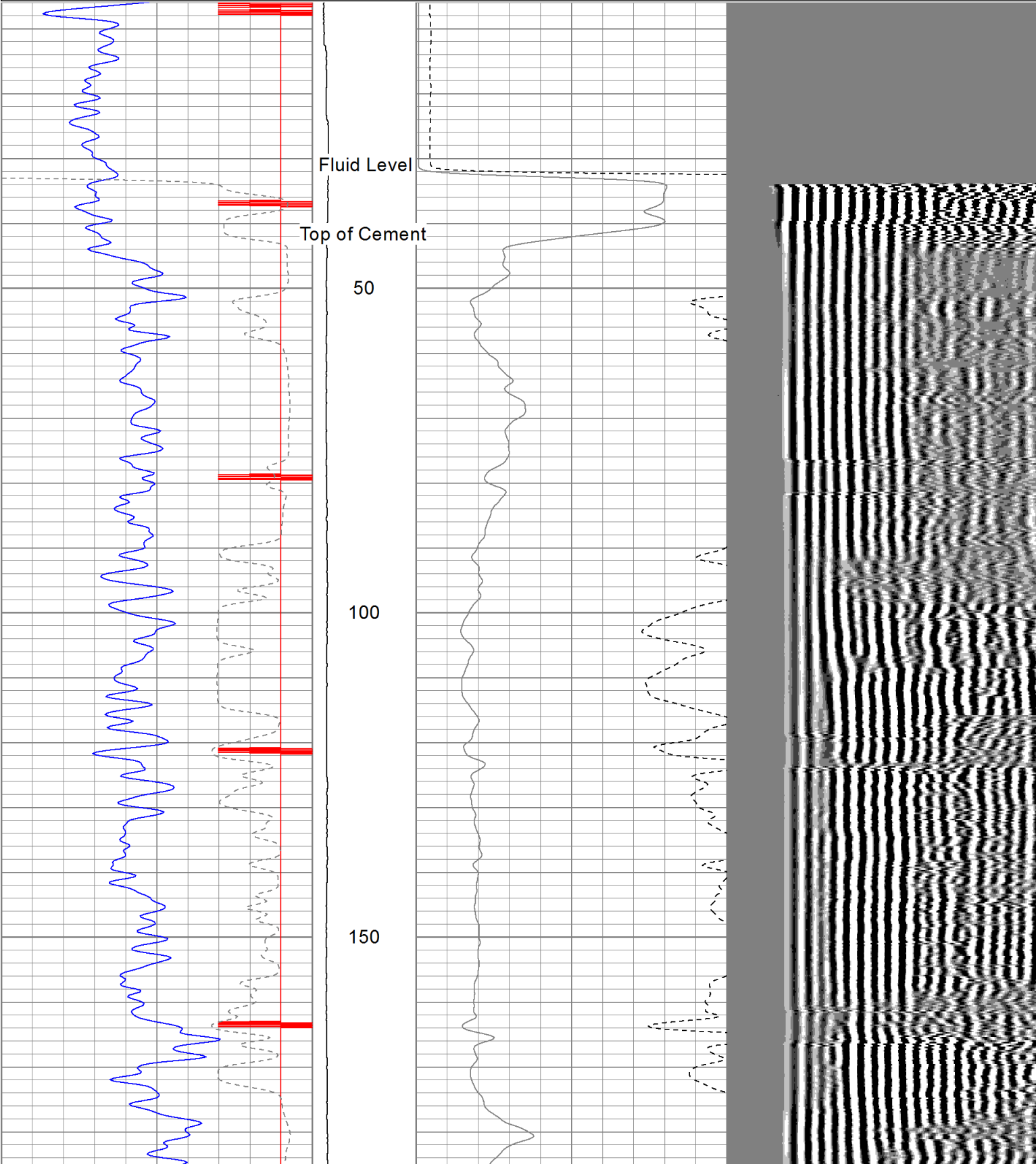
### Comments

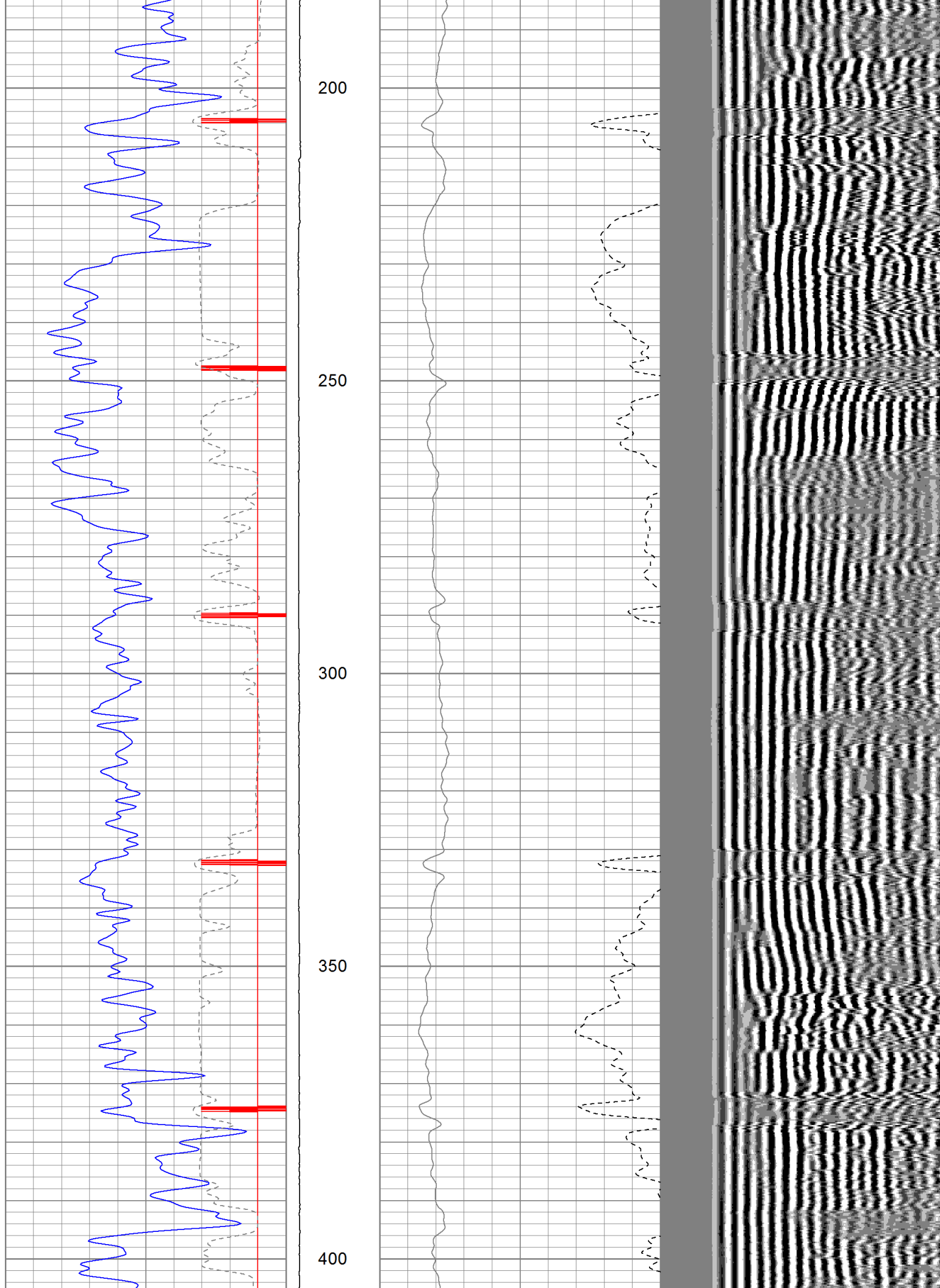
Log Correlated to Halliburton Dual Spaced Neutron, Spectral Density,  
Array Compensated, True Resistivity Log  
Dated: 9-18-12

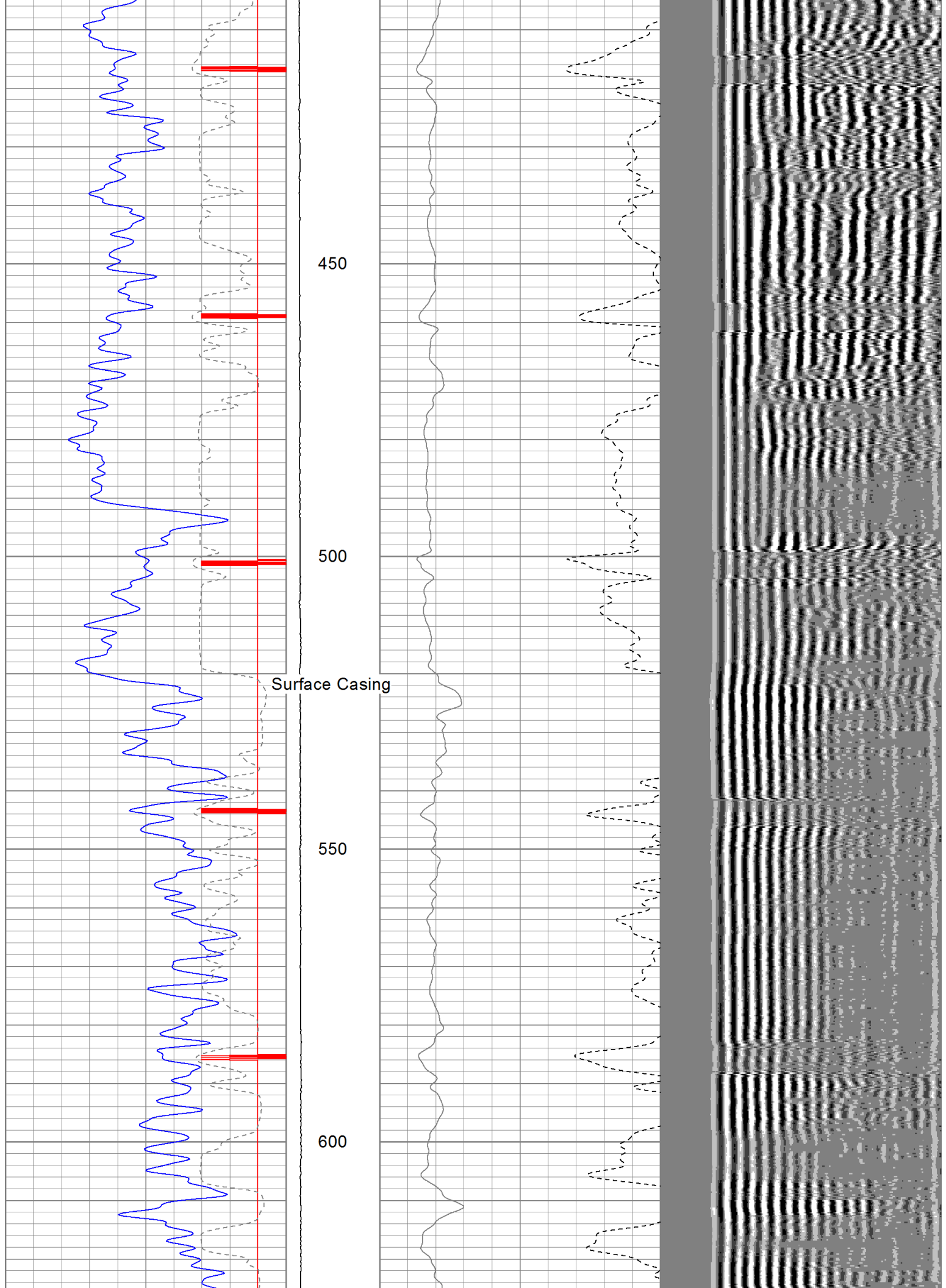
Thank You for using  
The Perforators.

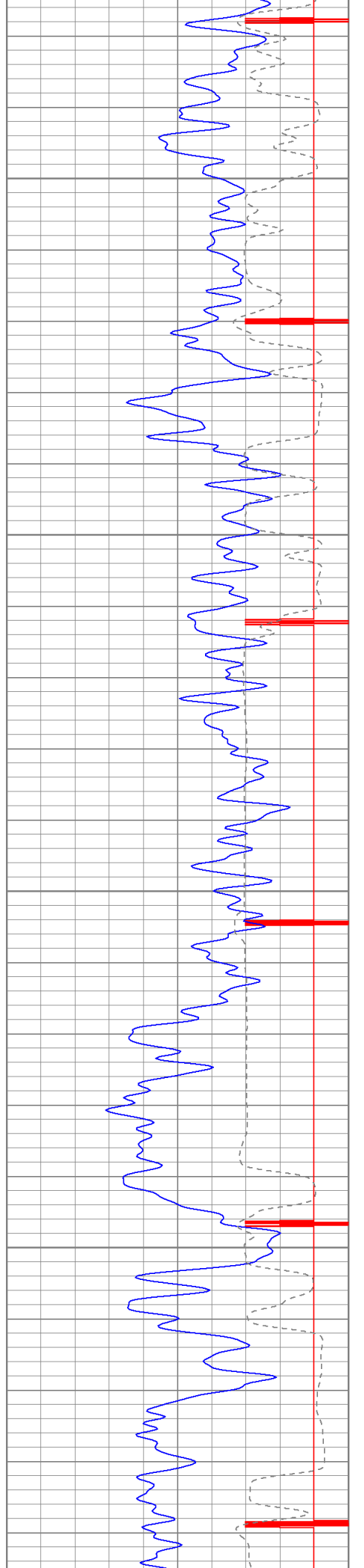
Database File: br fed 6-18-1-103.db  
Dataset Pathname: pass2.5  
Presentation Format: cbl  
Dataset Creation: Wed Oct 03 11:29:36 2012 by Calc Std Casedhole 10081  
Charted by: Depth in Feet scaled 1:240

9	CCL	-1	LTEN	0	AMP3 (mV)	100	200	Variable Density	1200
0	GR (GAPI)	150	(lb)	0	Amplified Amplitude (mV)	20			
430	TT3 (usec)	230	0	2500					







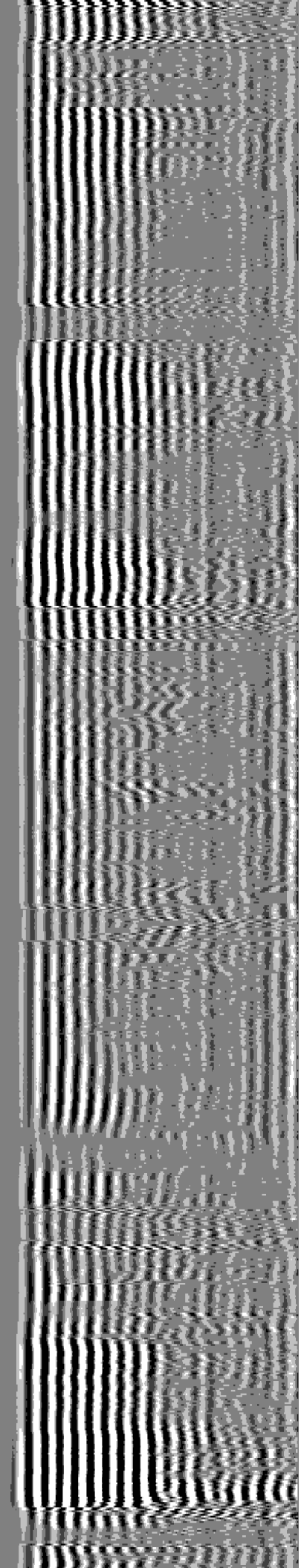
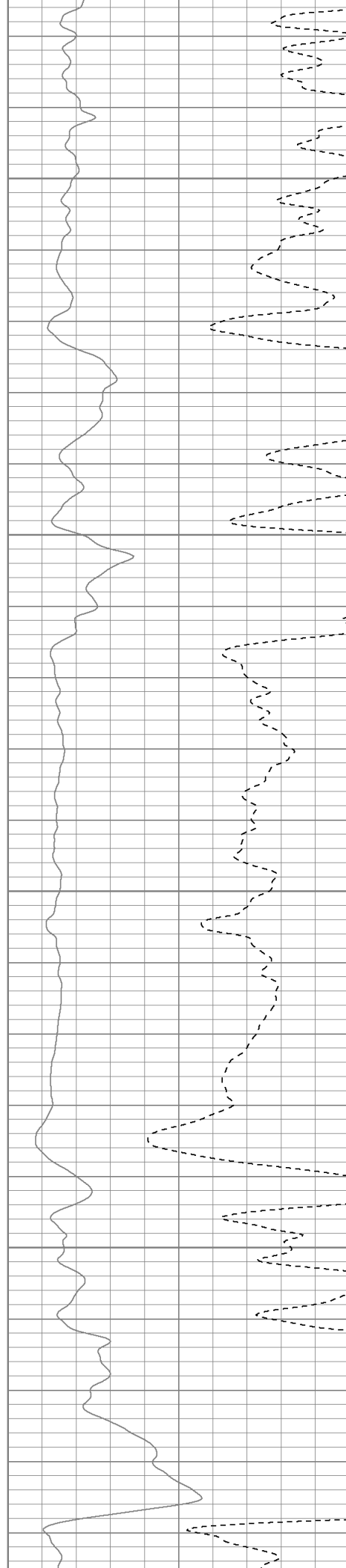


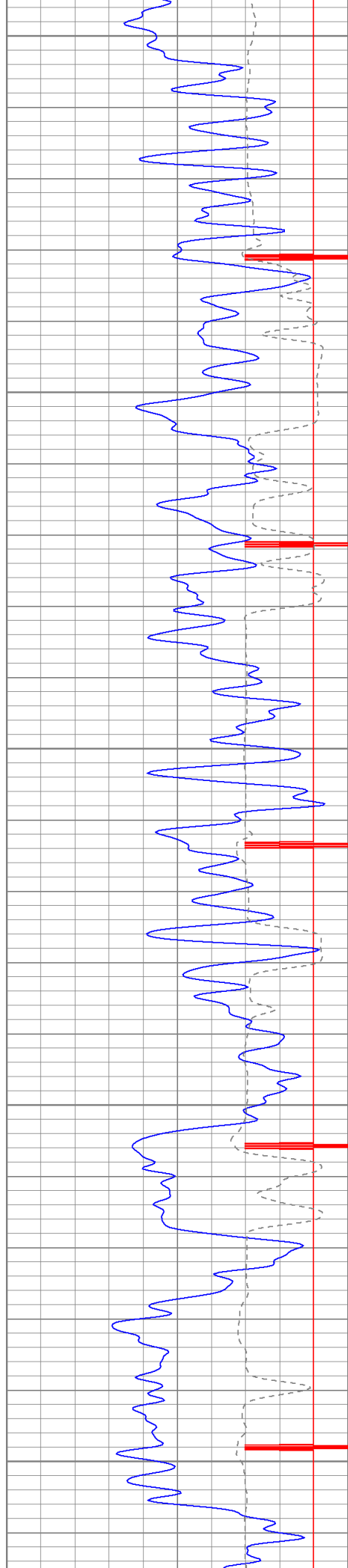
650

700

750

800





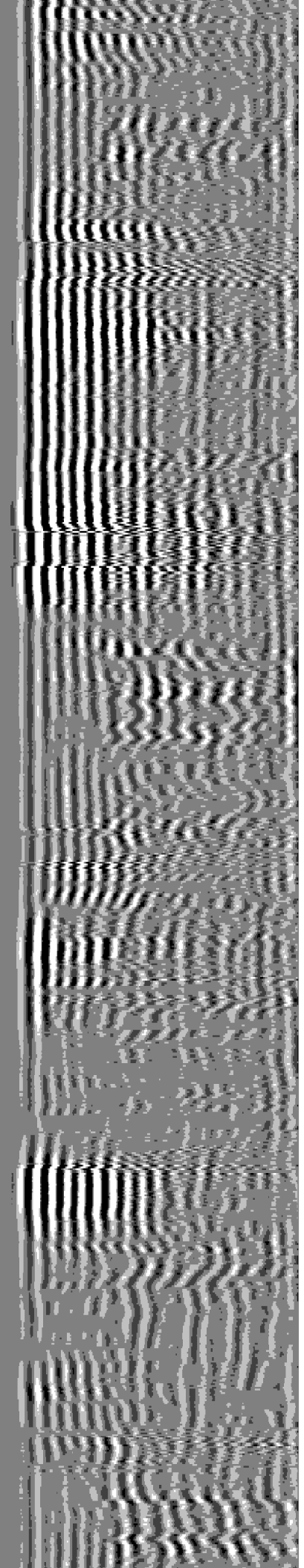
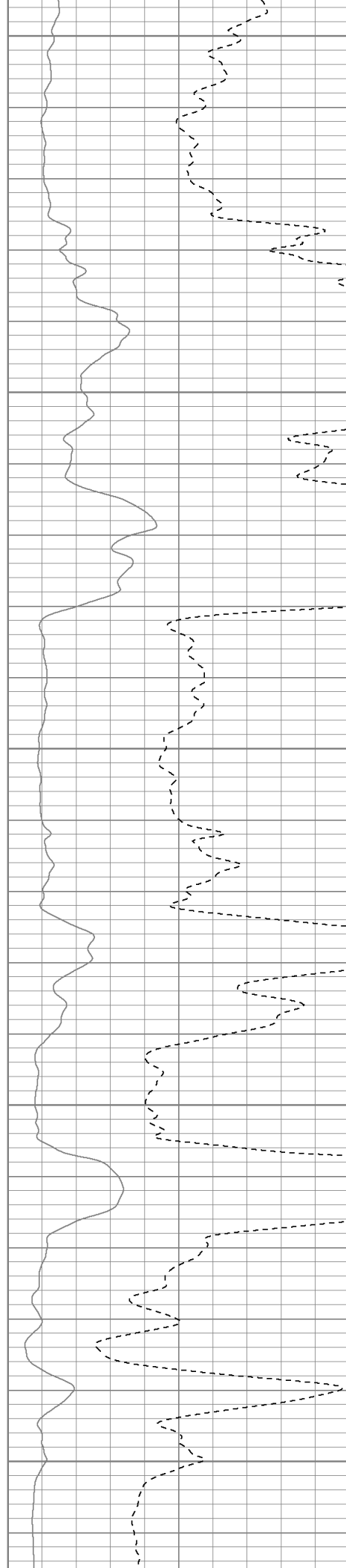
850

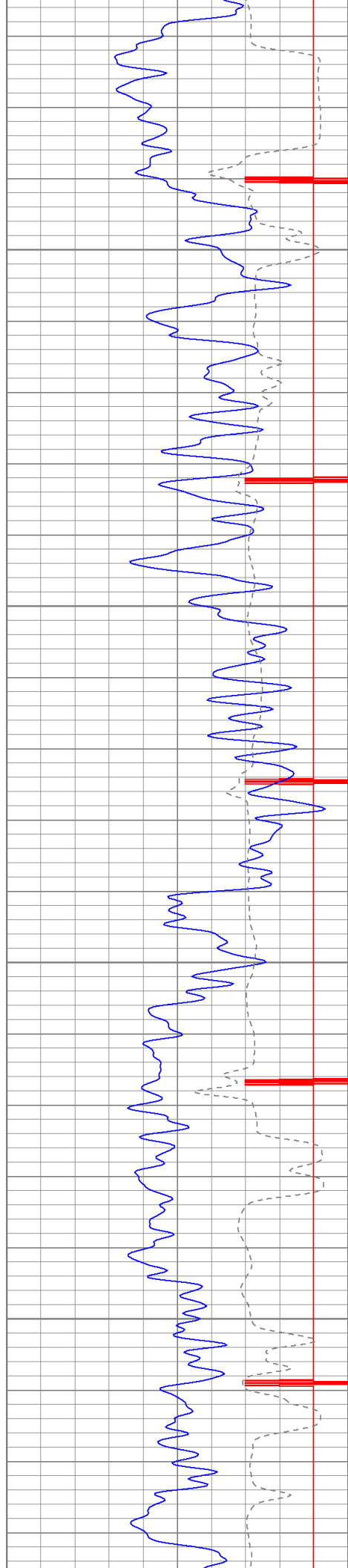
900

950

1000

1050



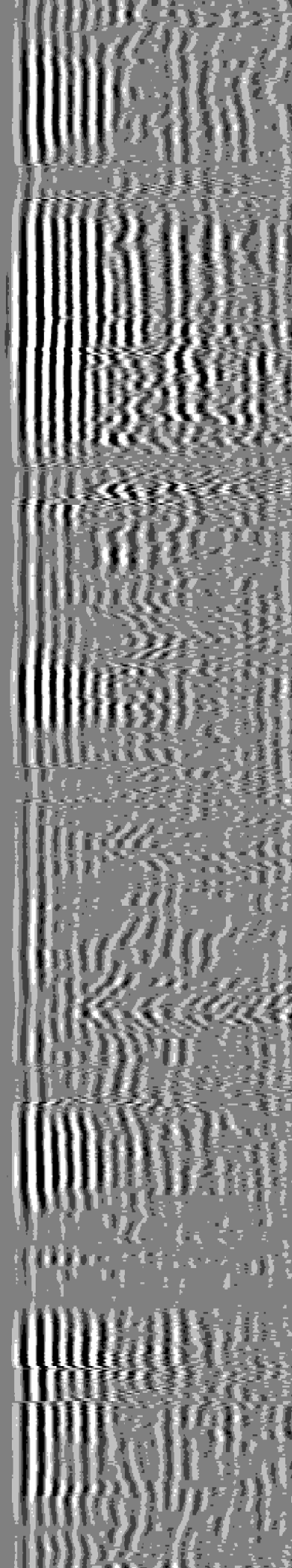
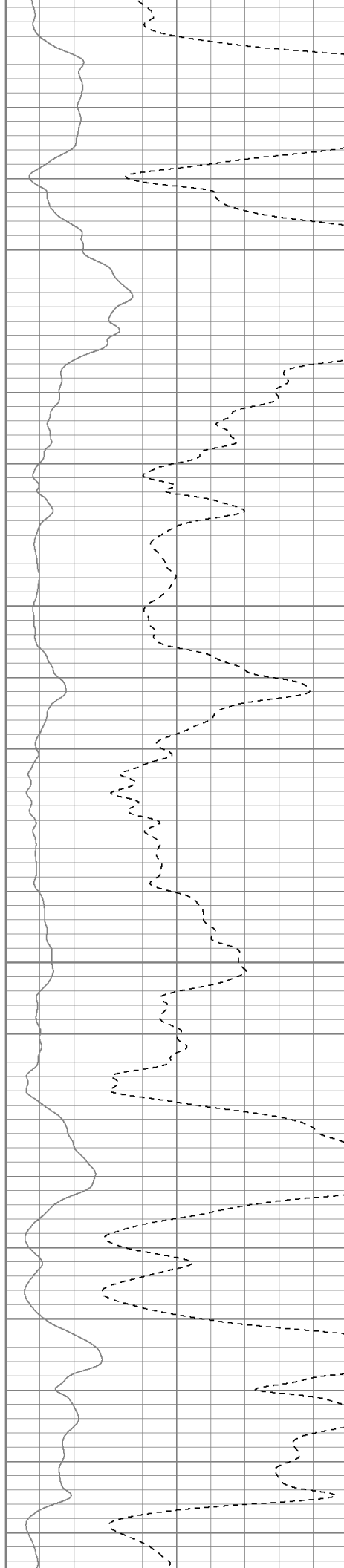


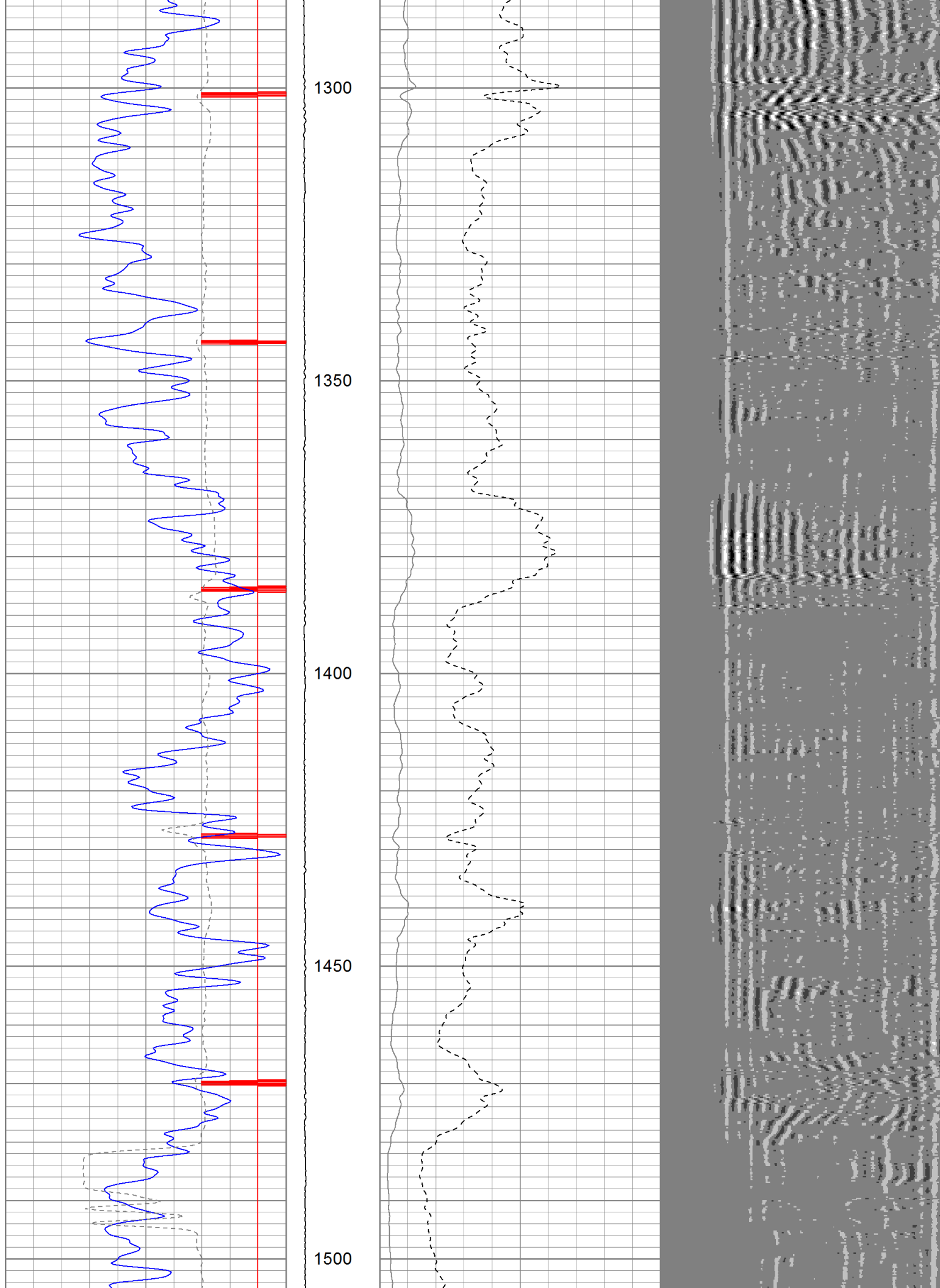
1100

1150

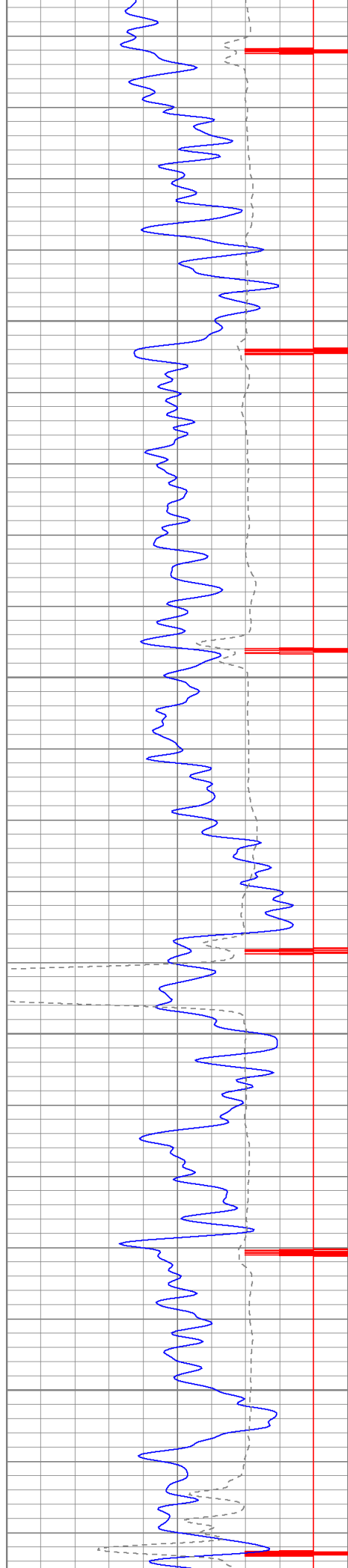
1200

1250







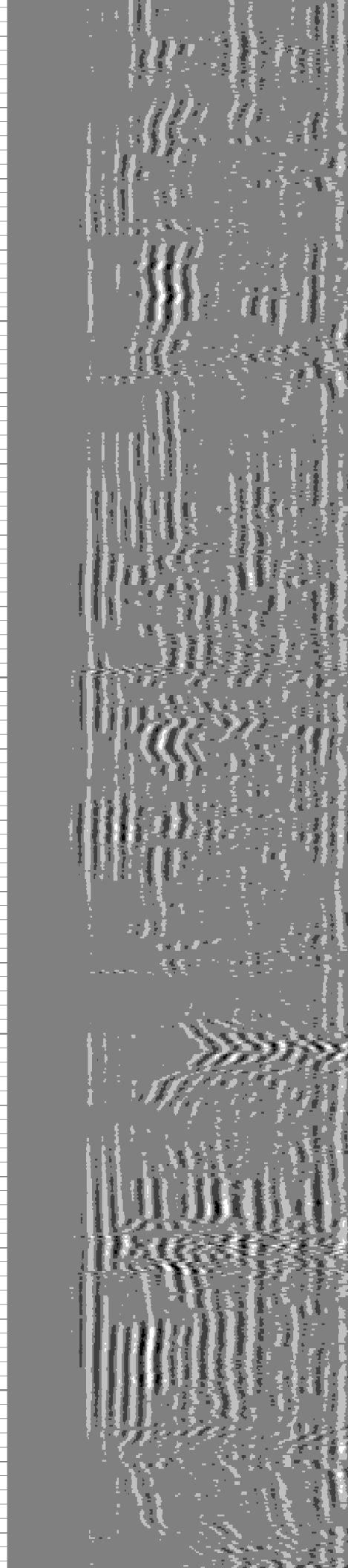
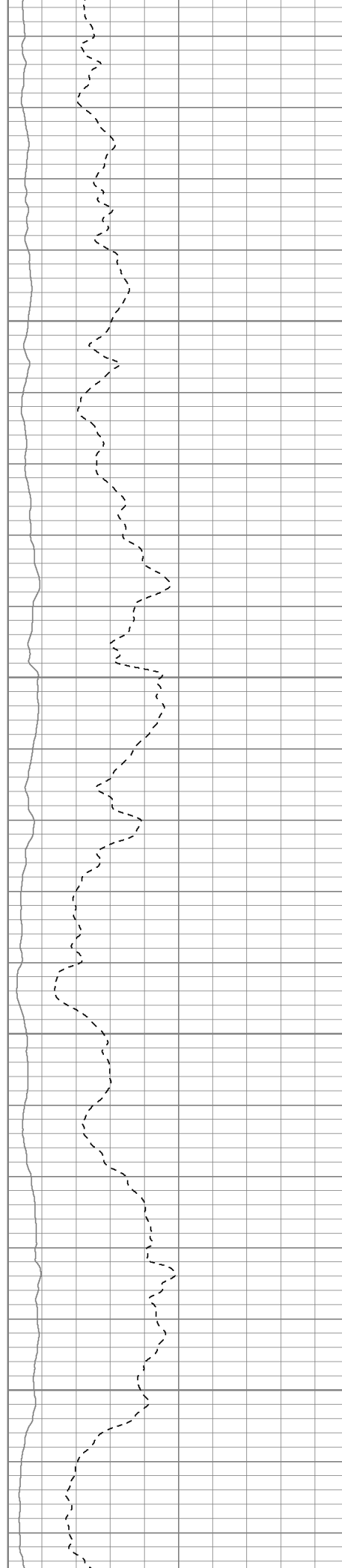


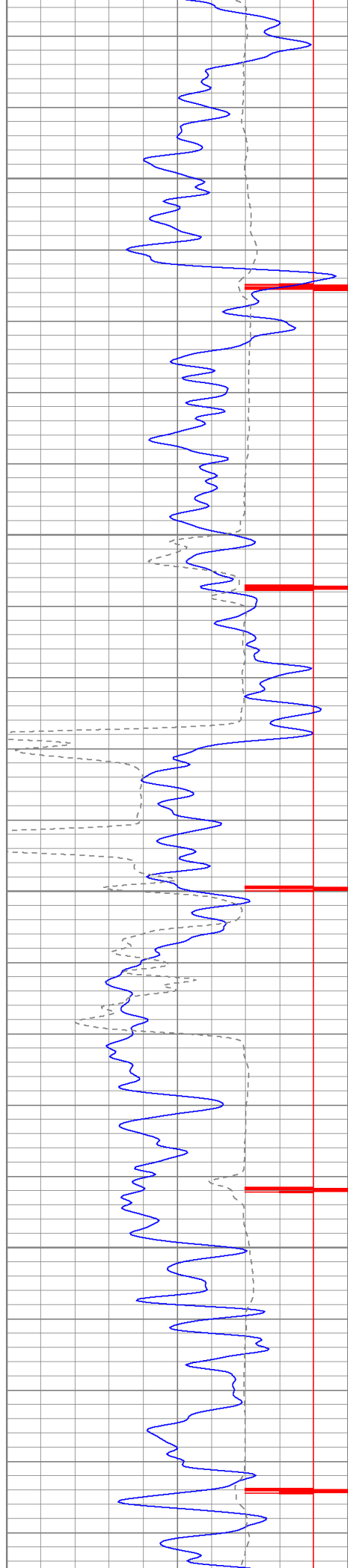
1550

1600

1650

1700



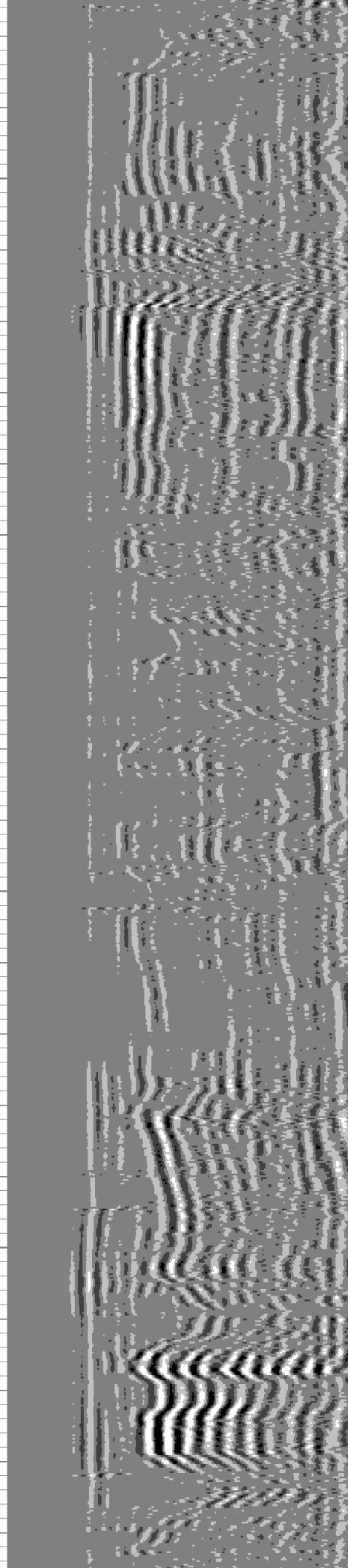
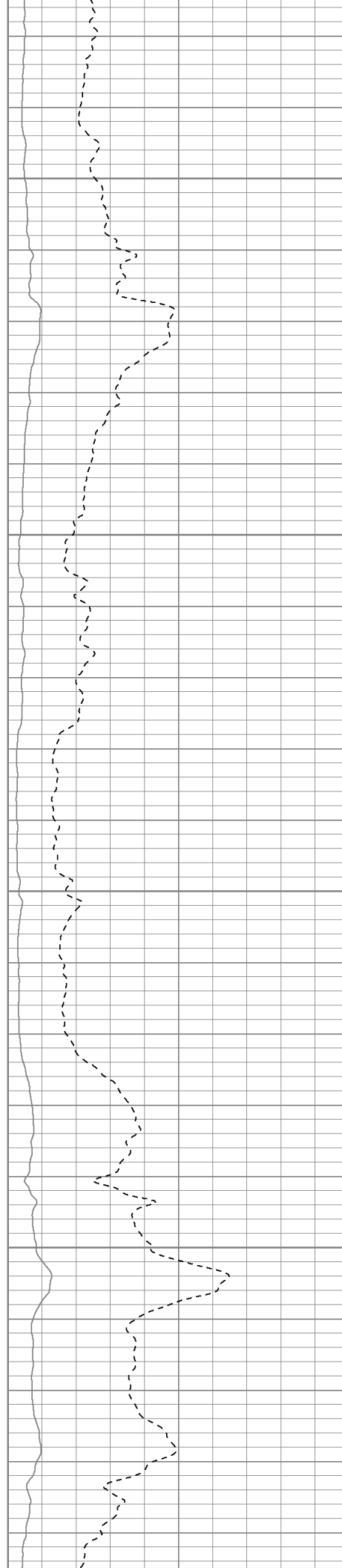


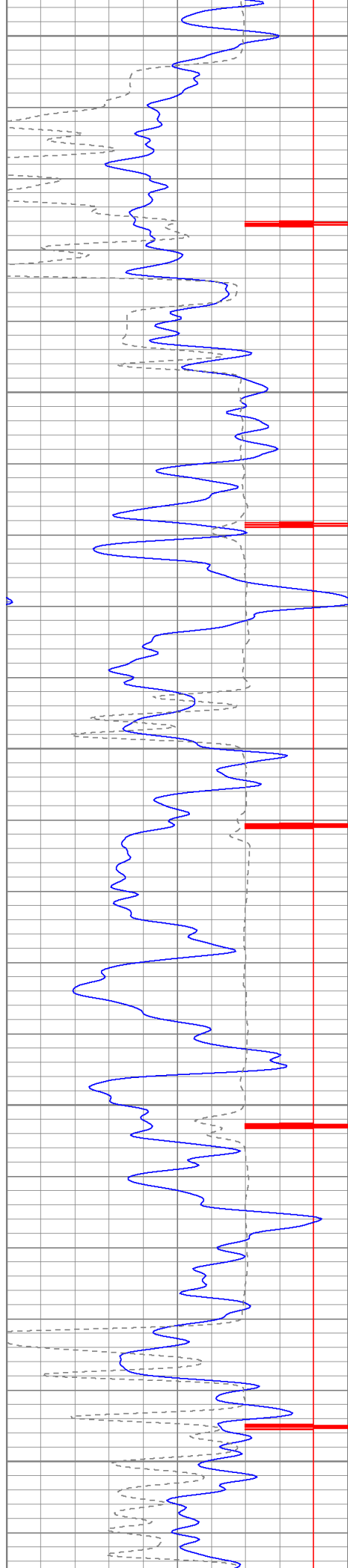
1750

1800

1850

1900





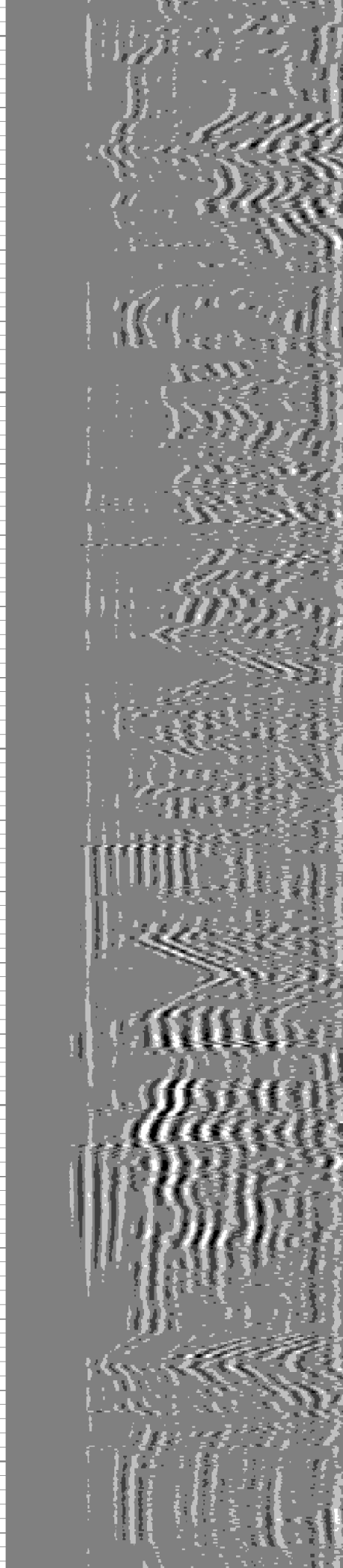
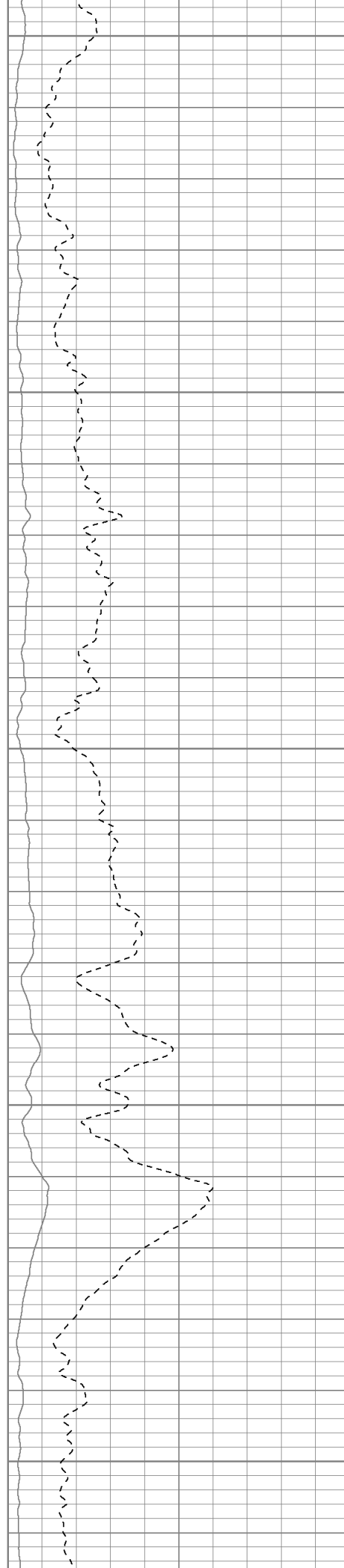
1950

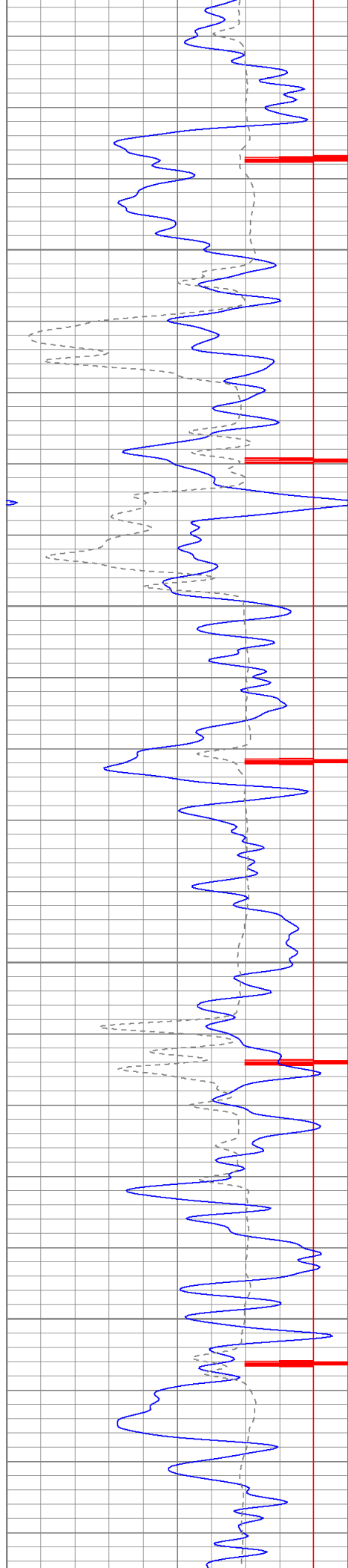
2000

2050

2100

2150



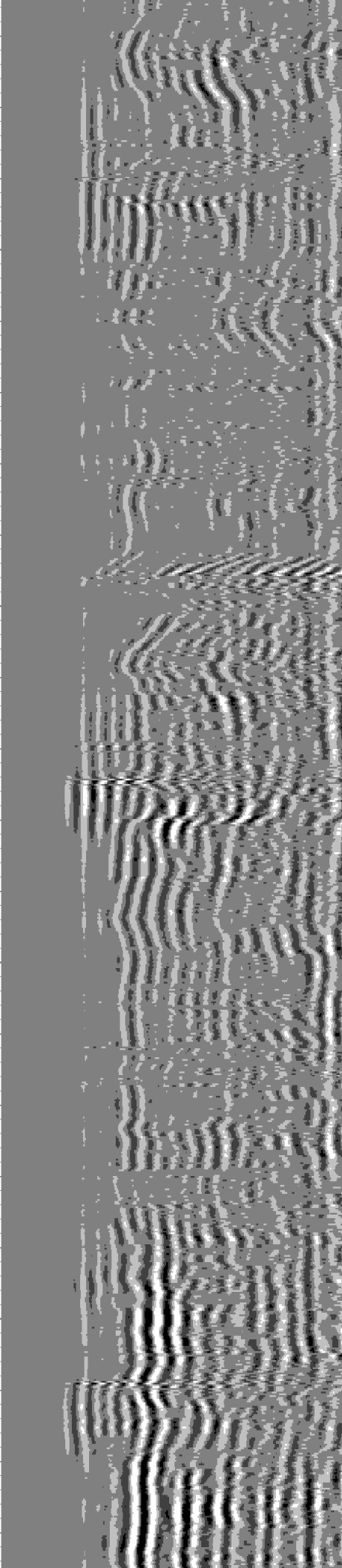
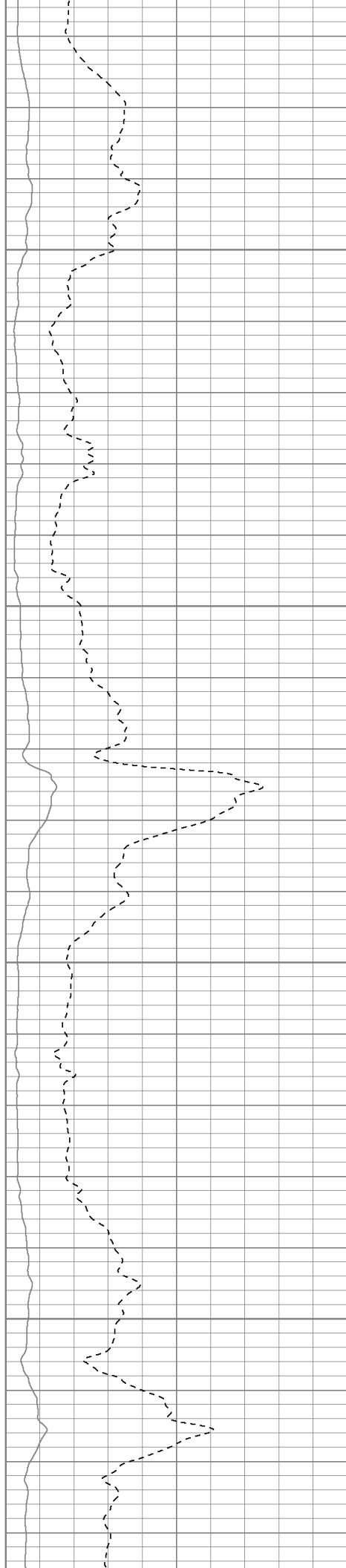


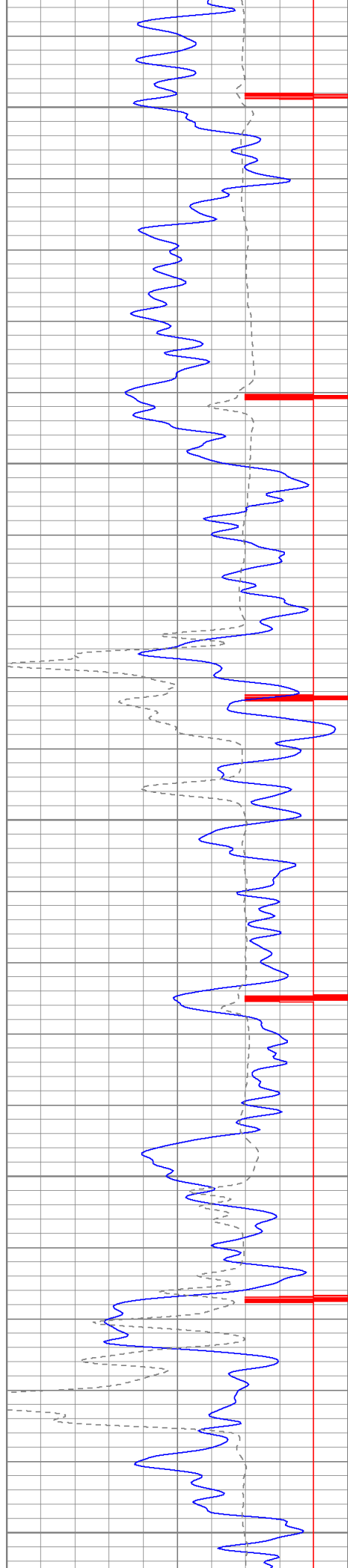
2200

2250

2300

2350





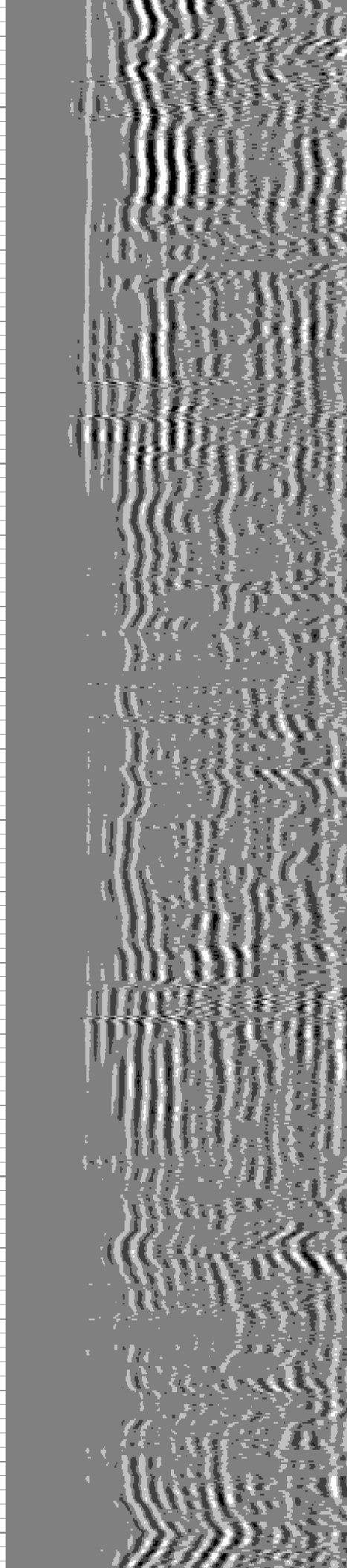
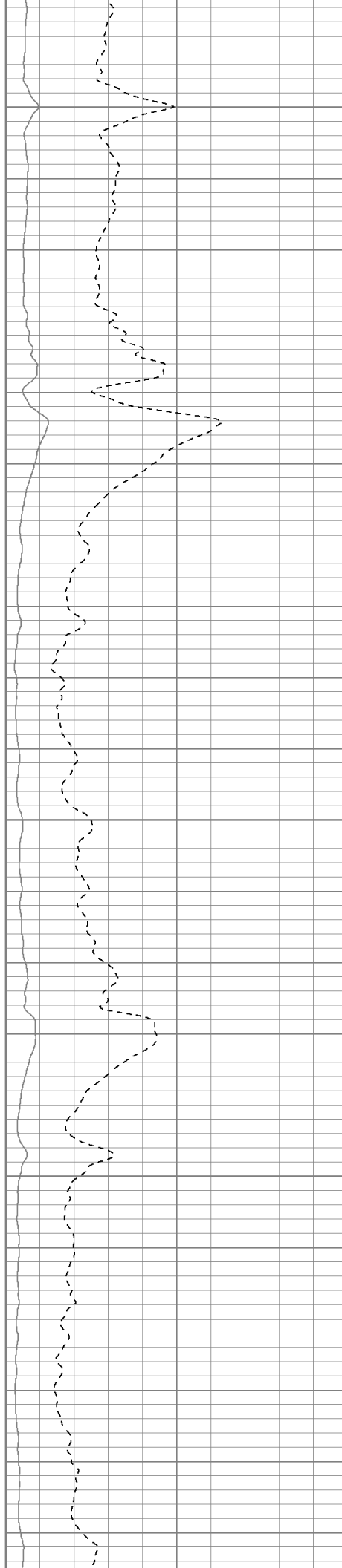
2400

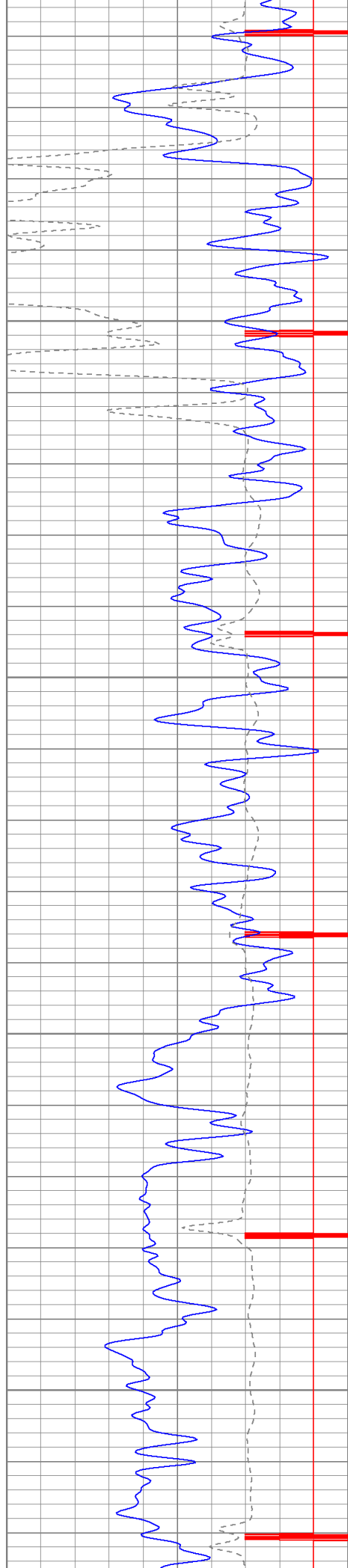
2450

2500

2550

2600



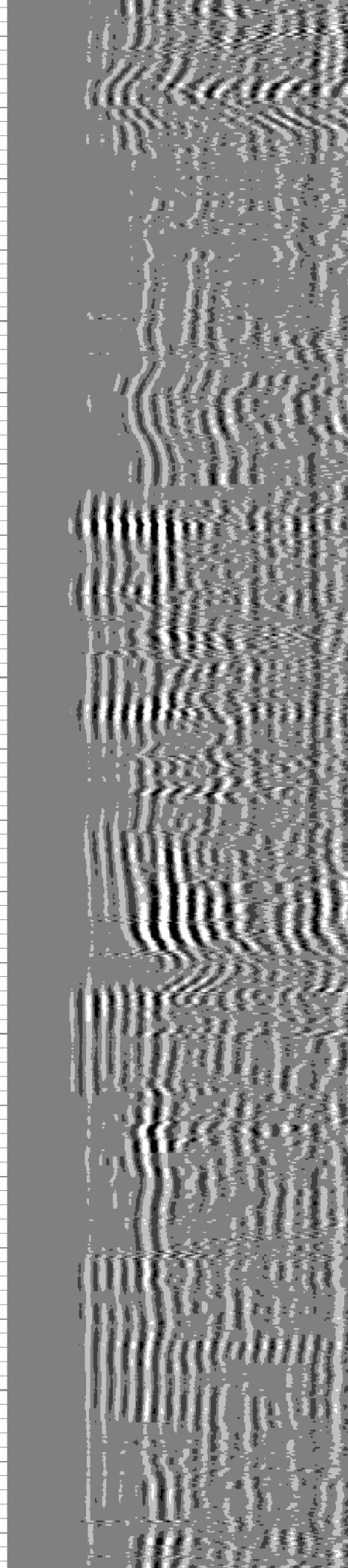
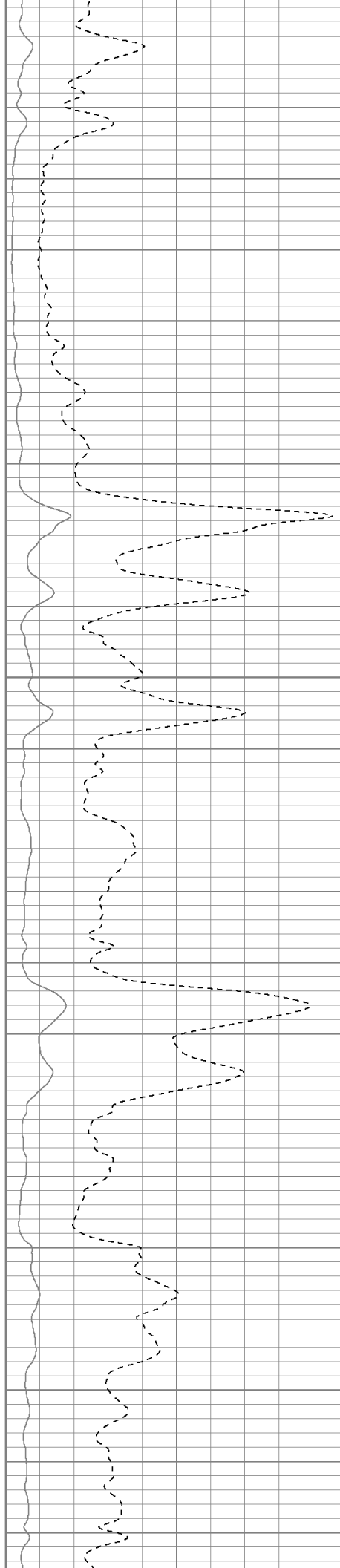


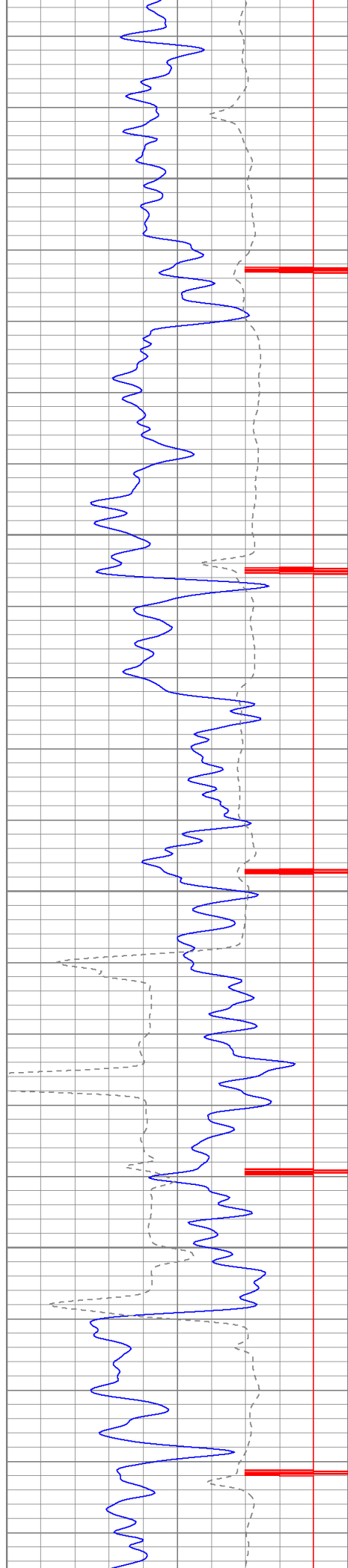
2650

2700

2750

2800



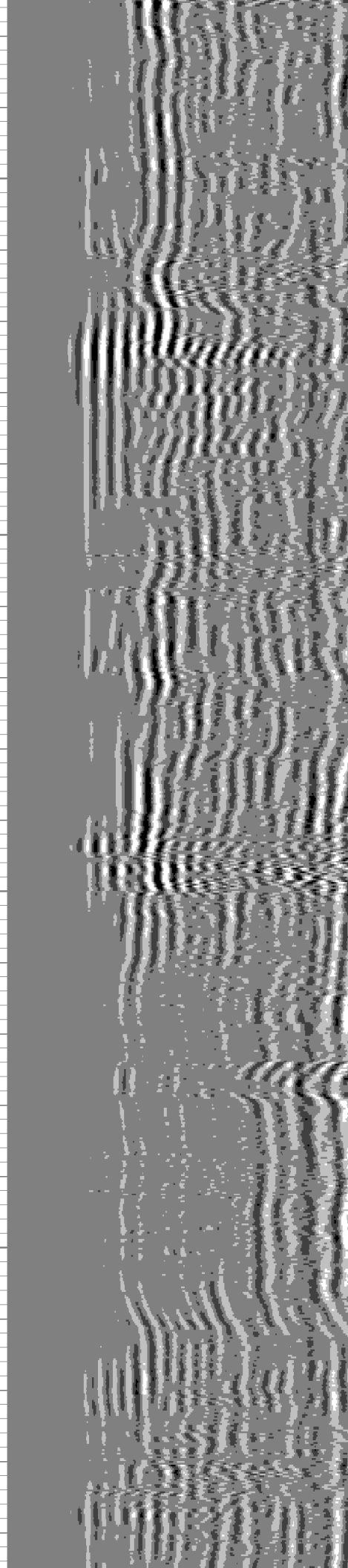
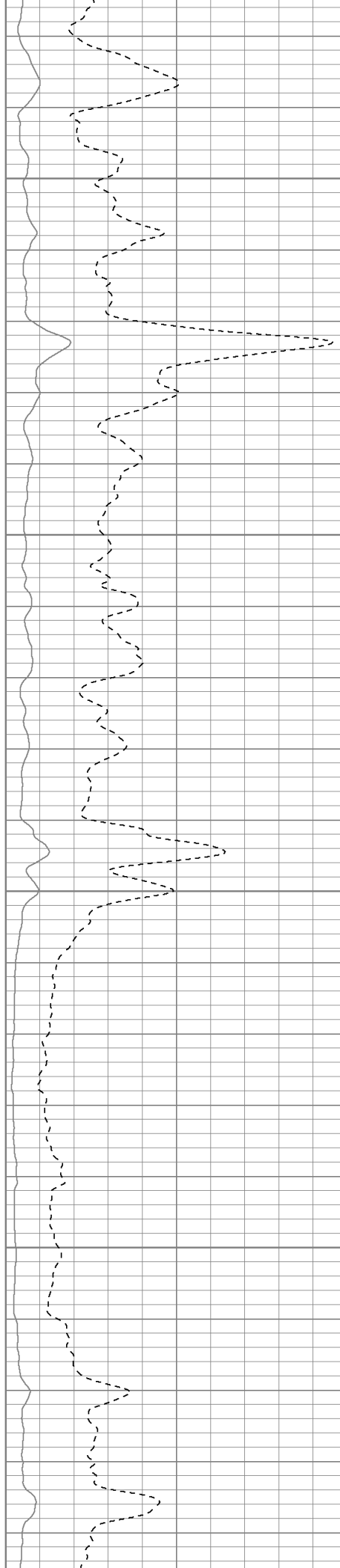


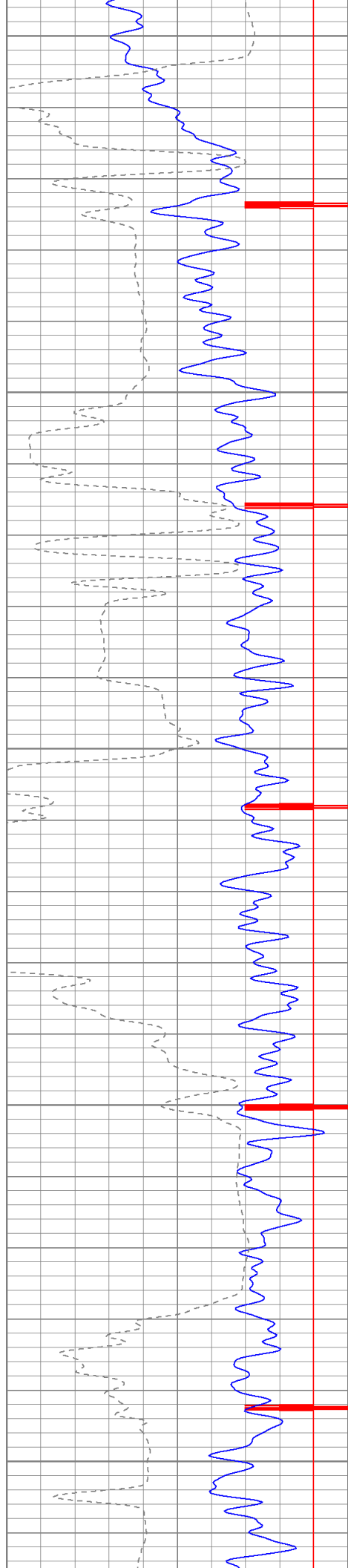
2850

2900

2950

3000





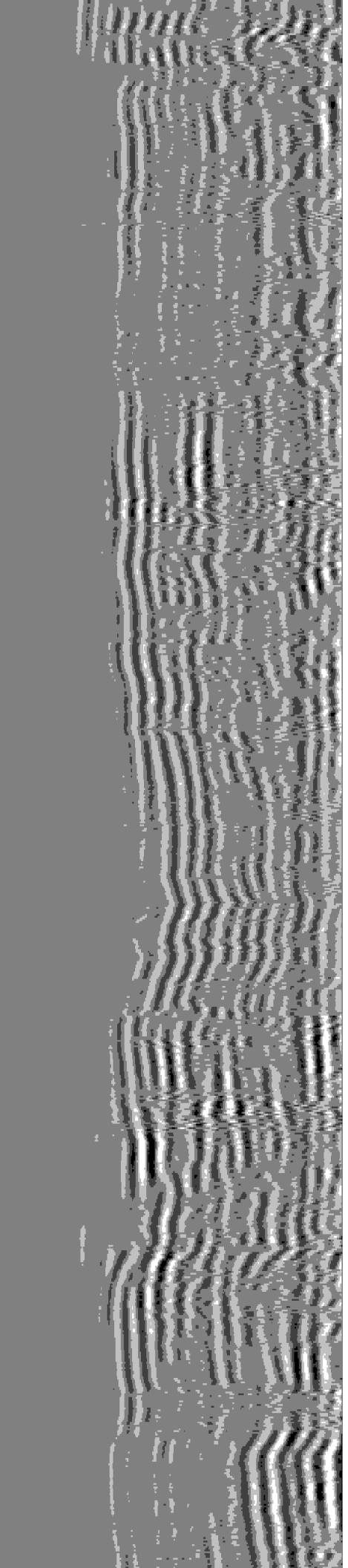
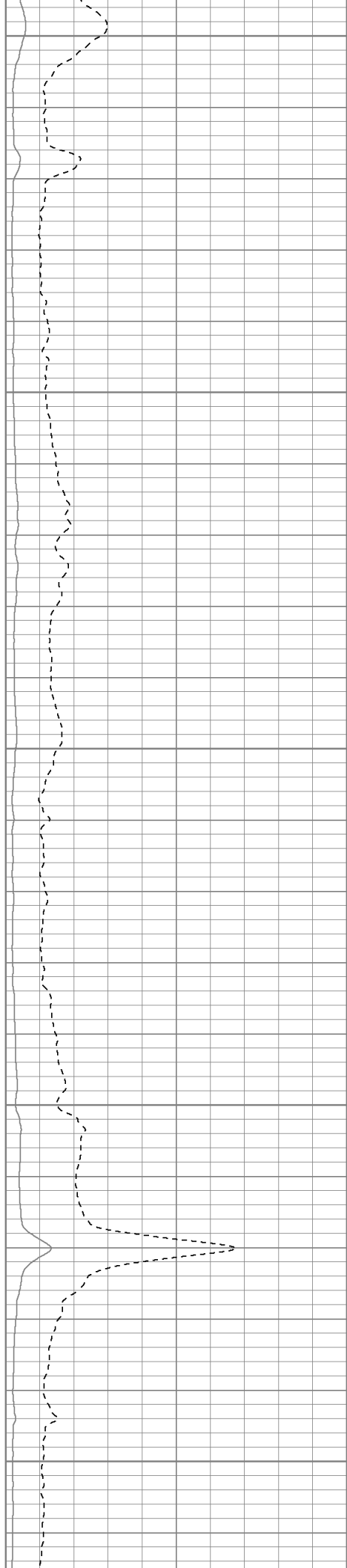
3050

3100

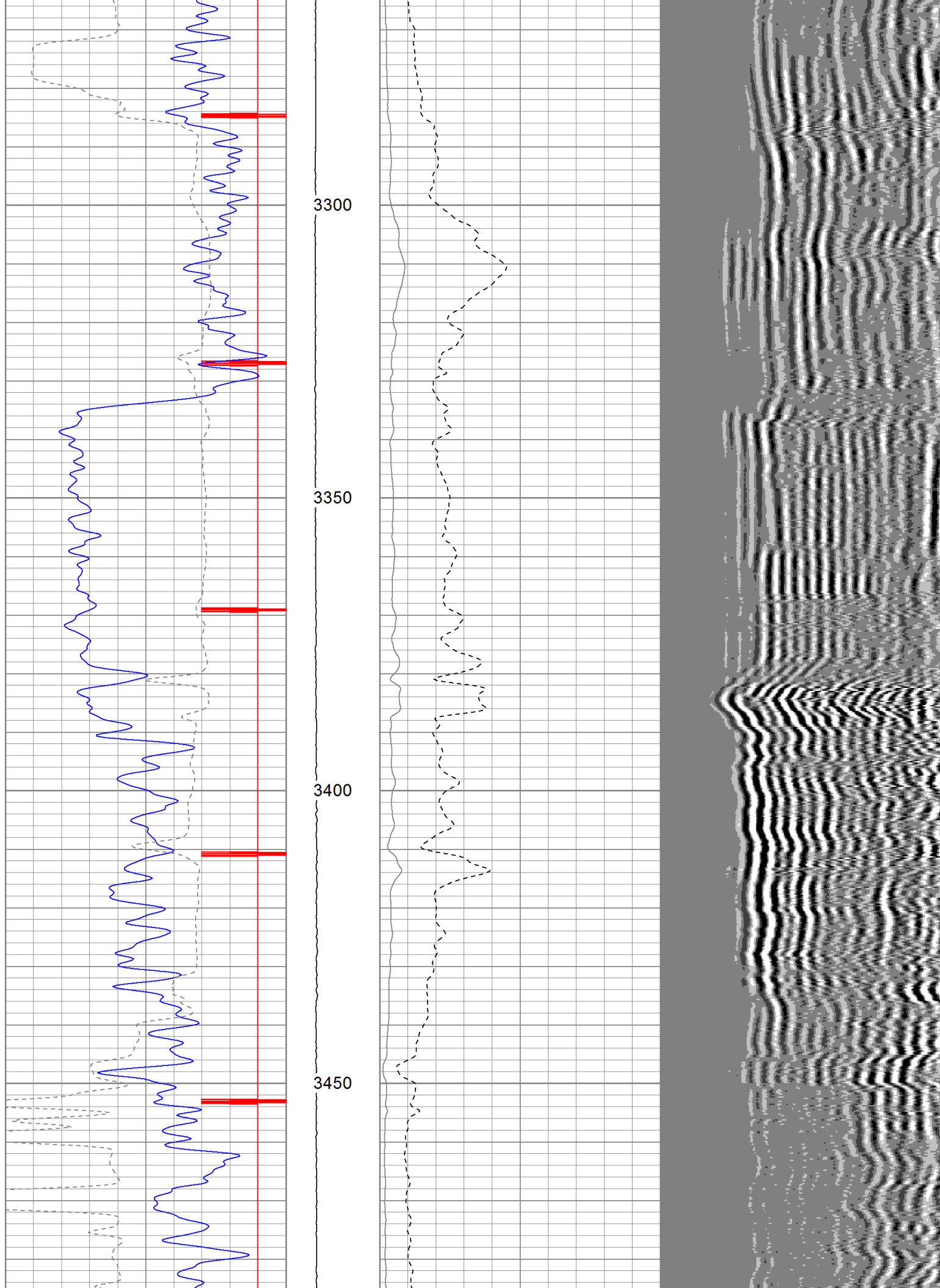
3150

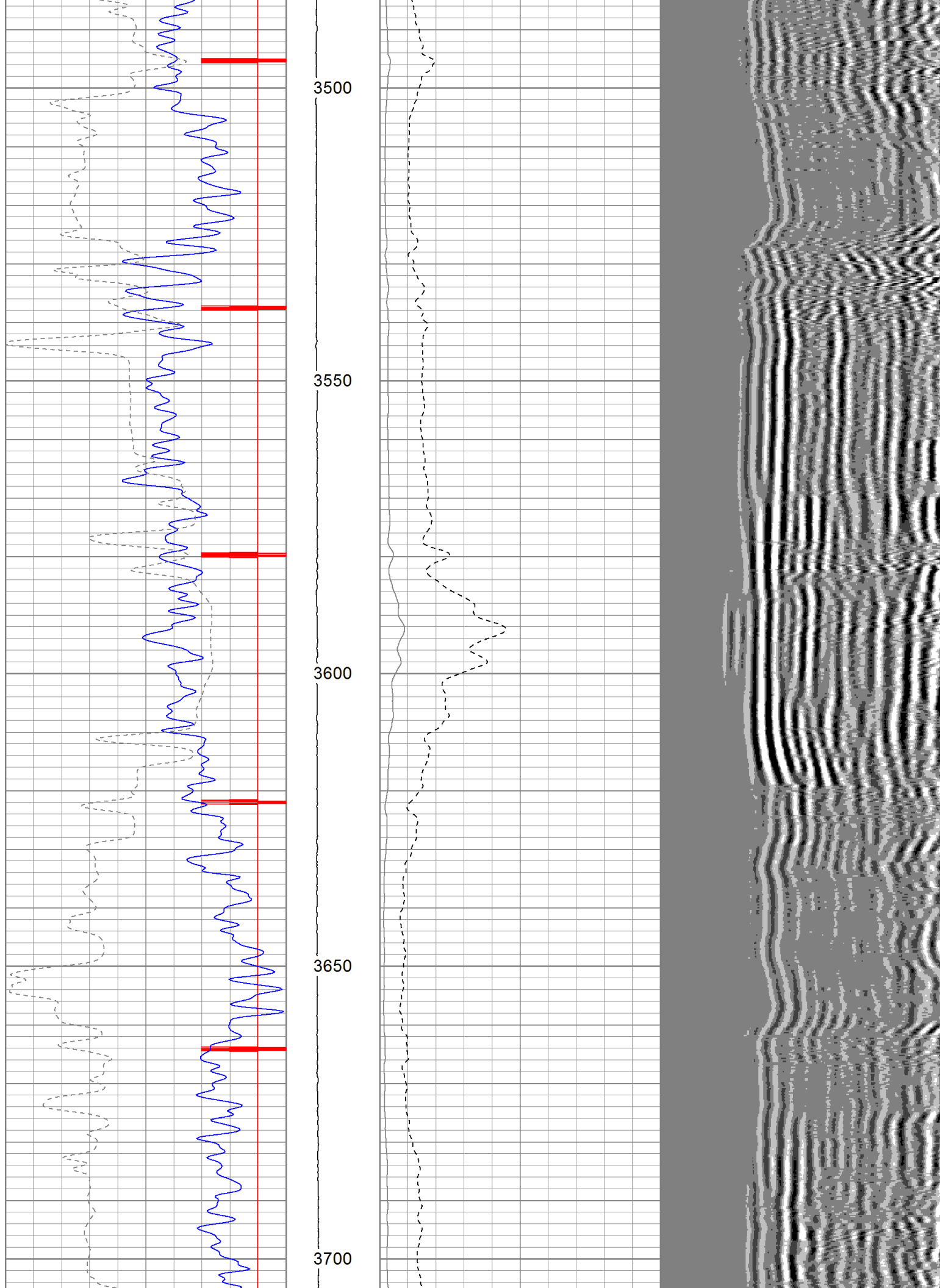
3200

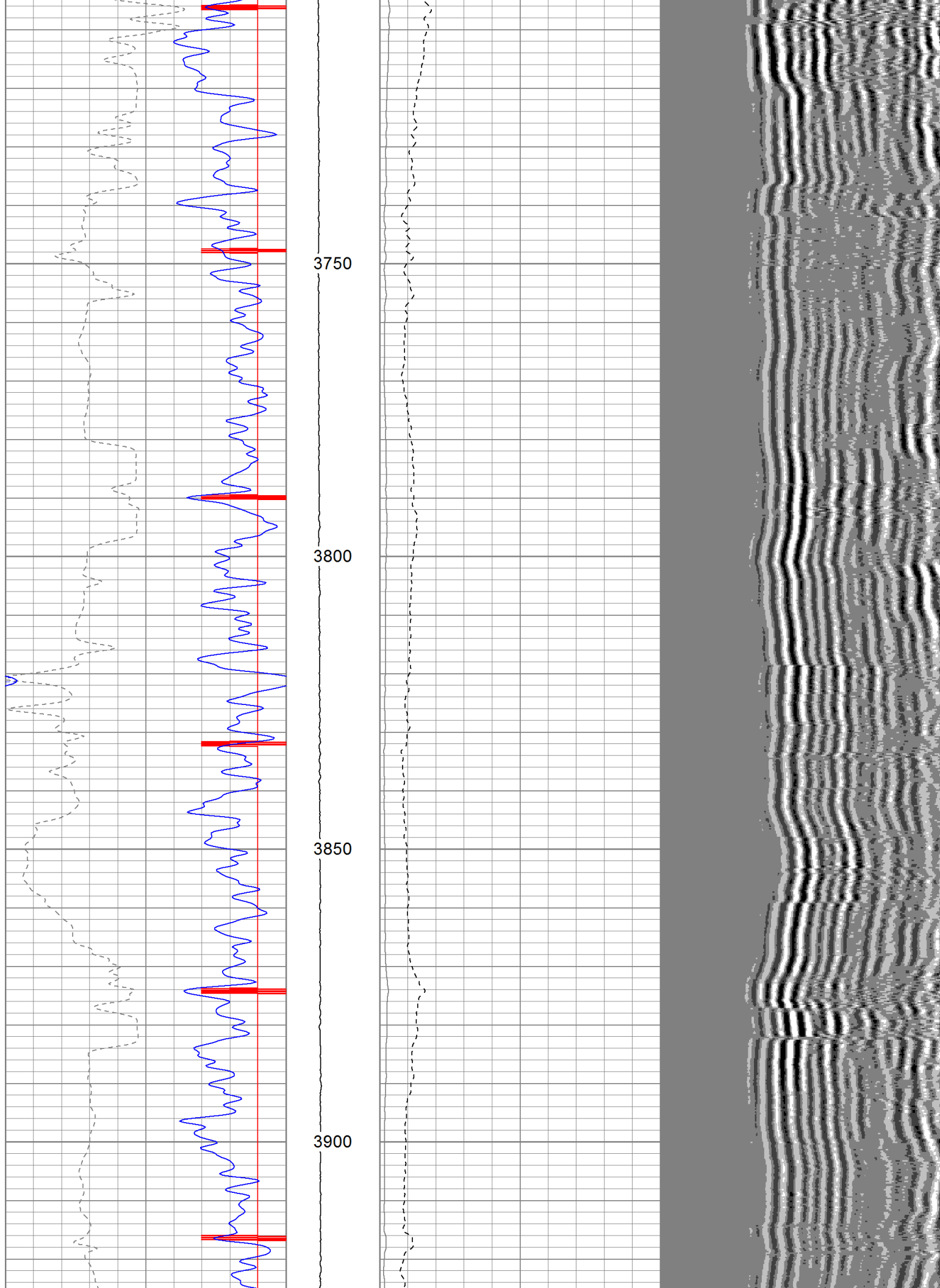
3250

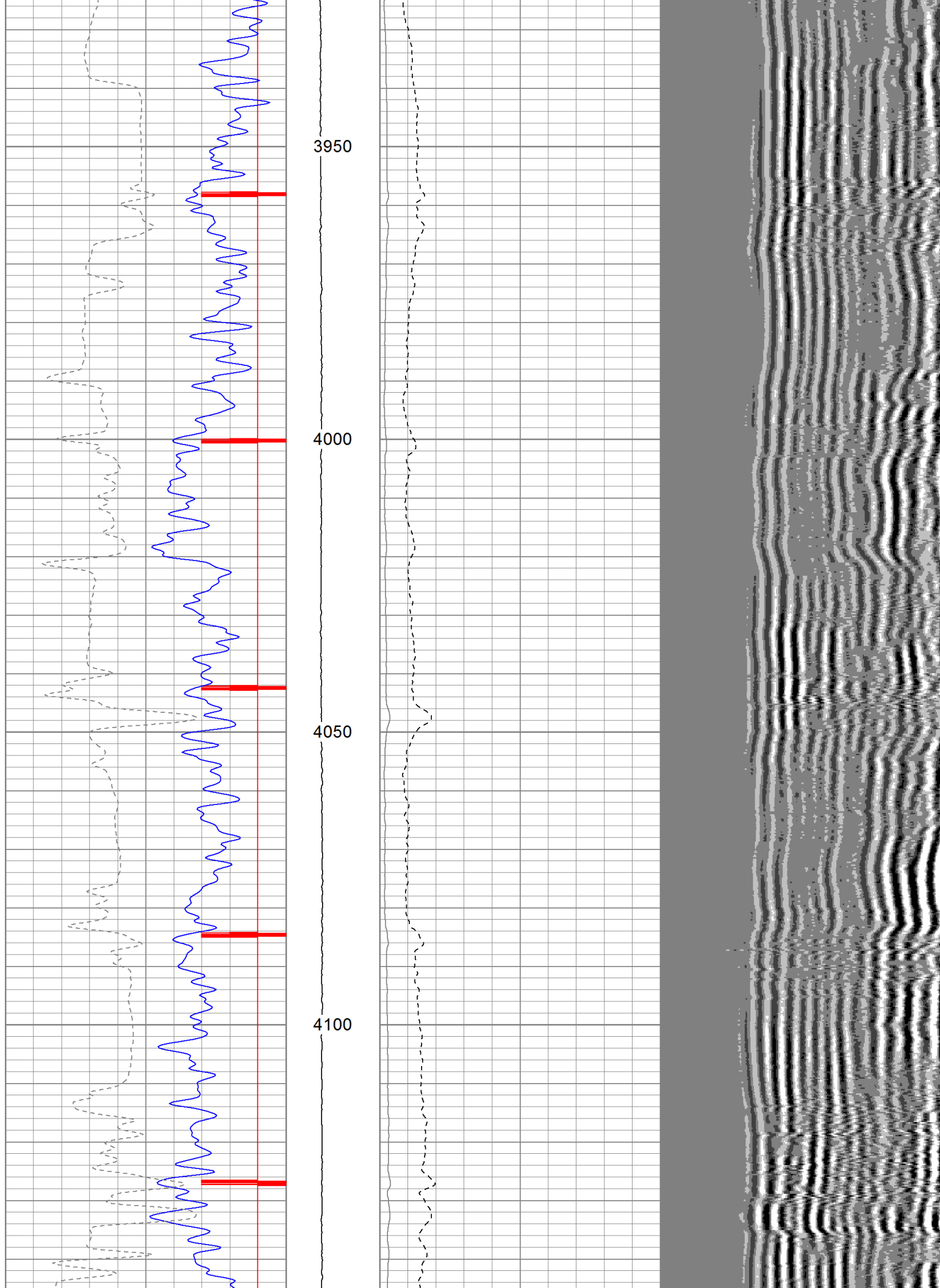


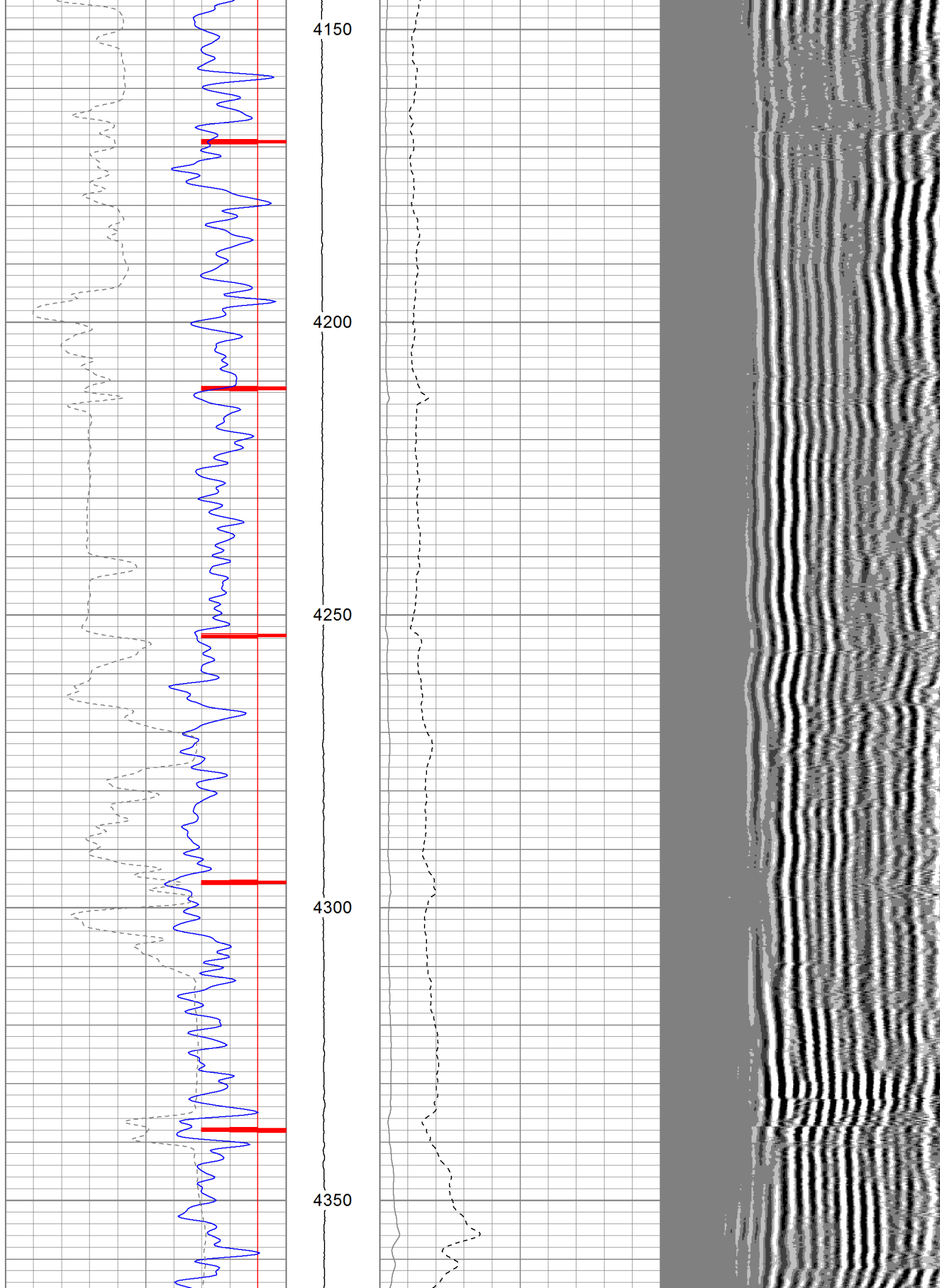


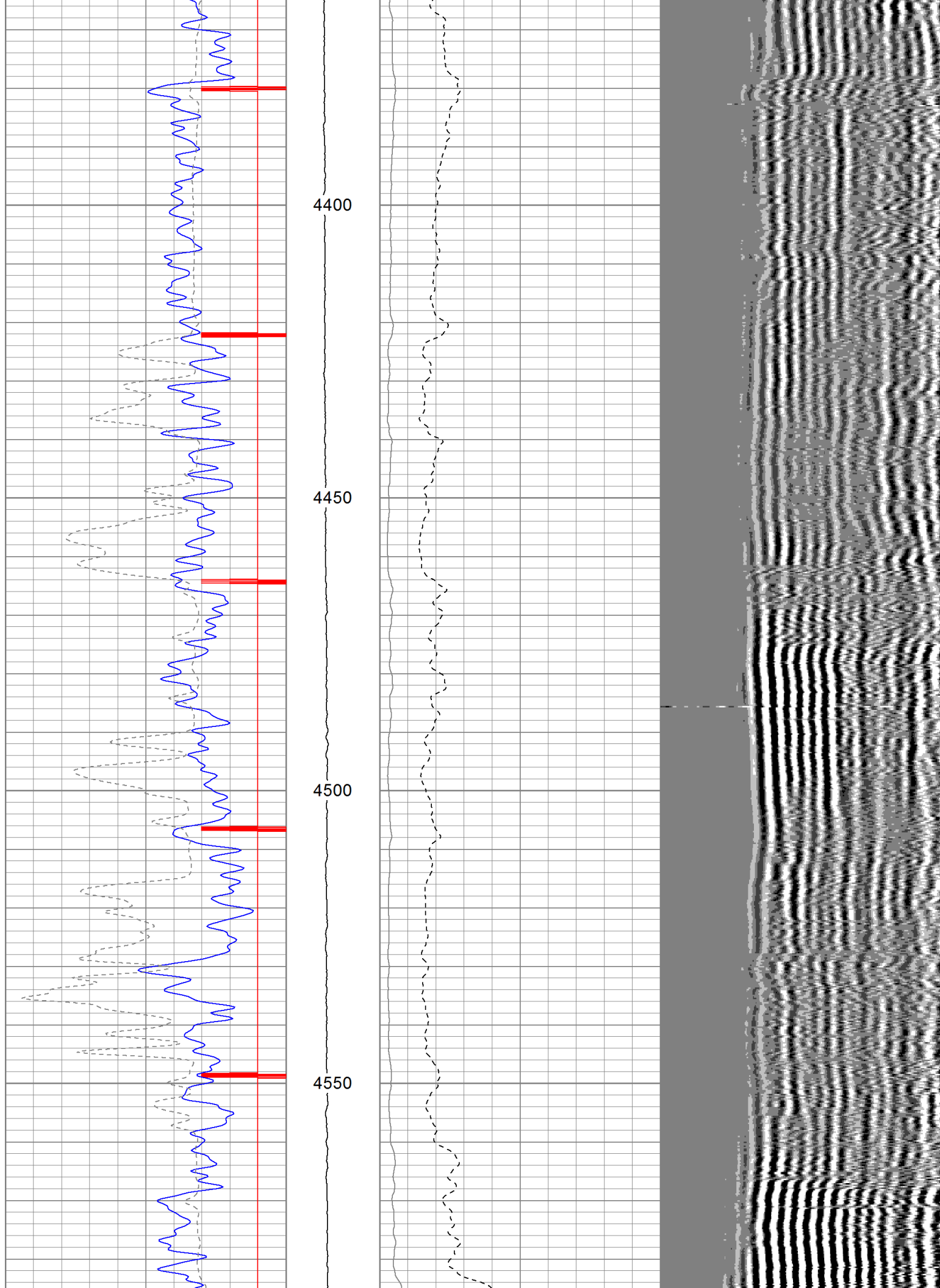


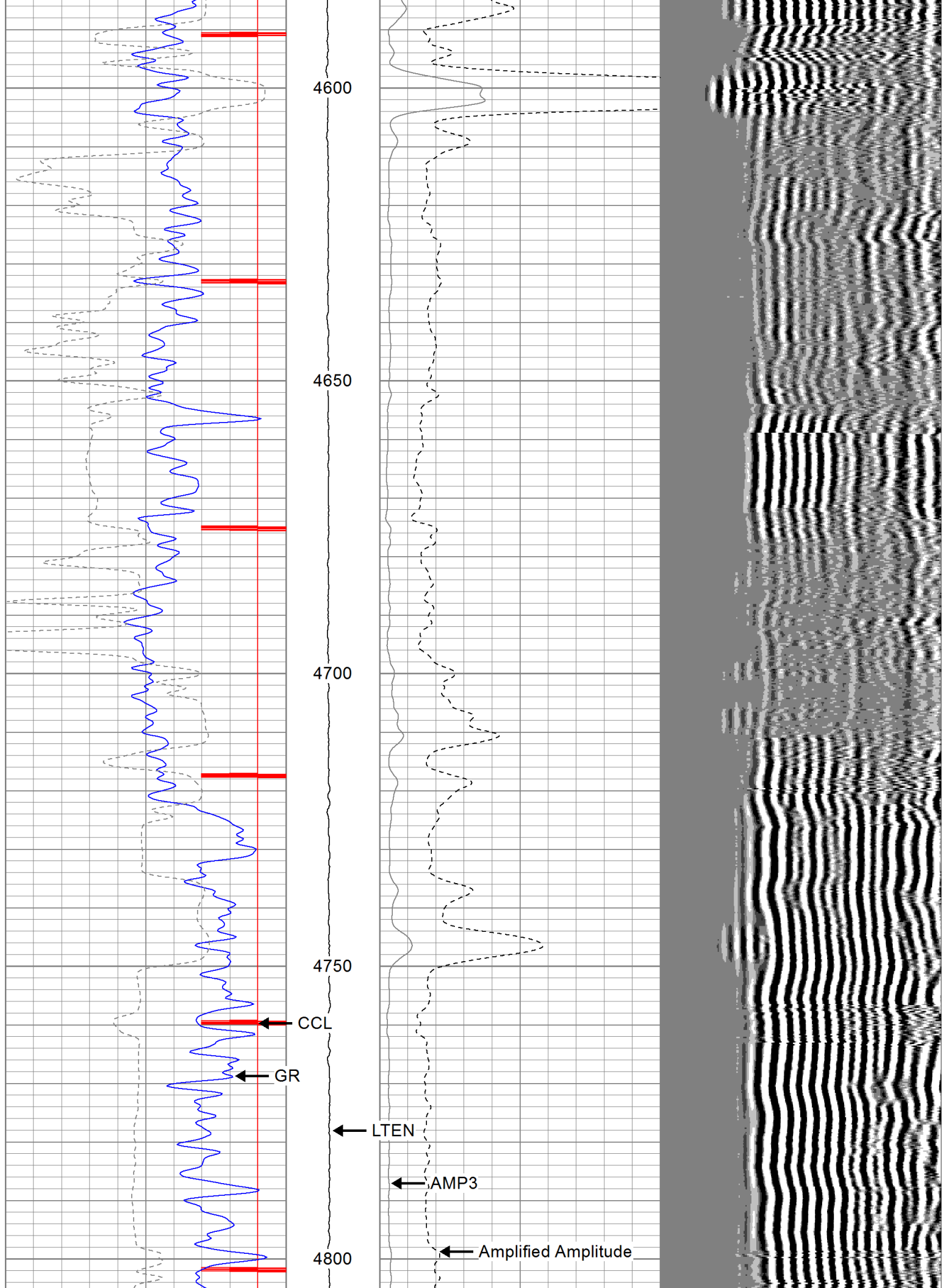


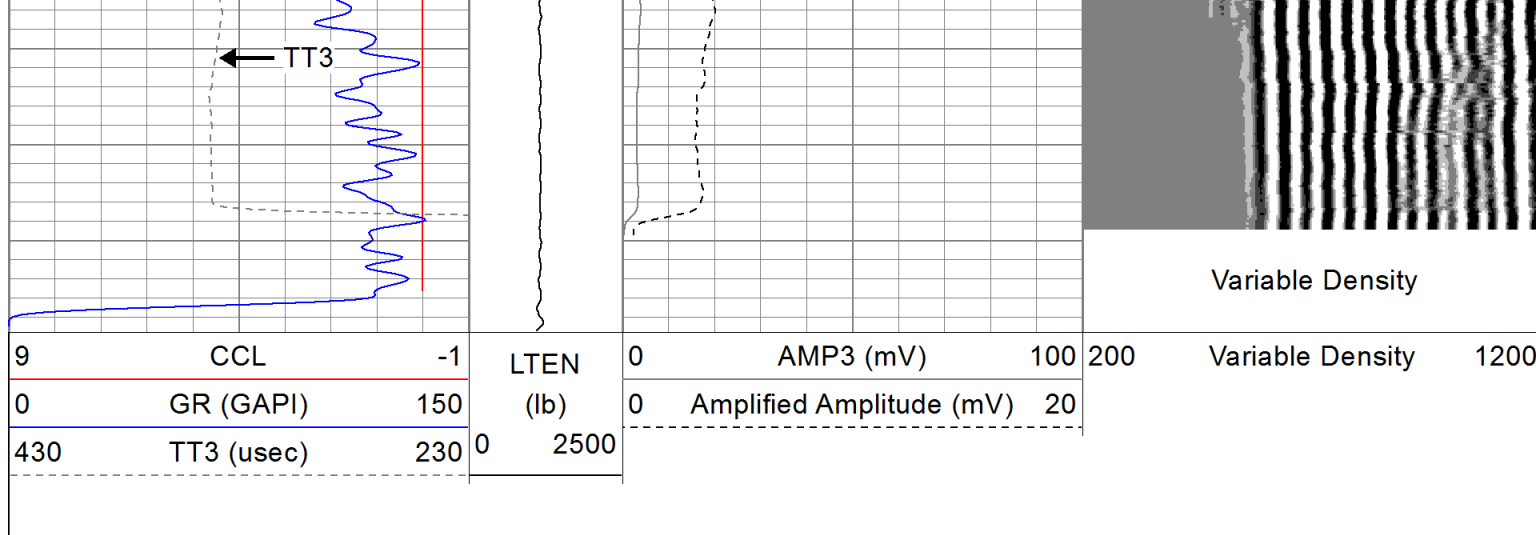








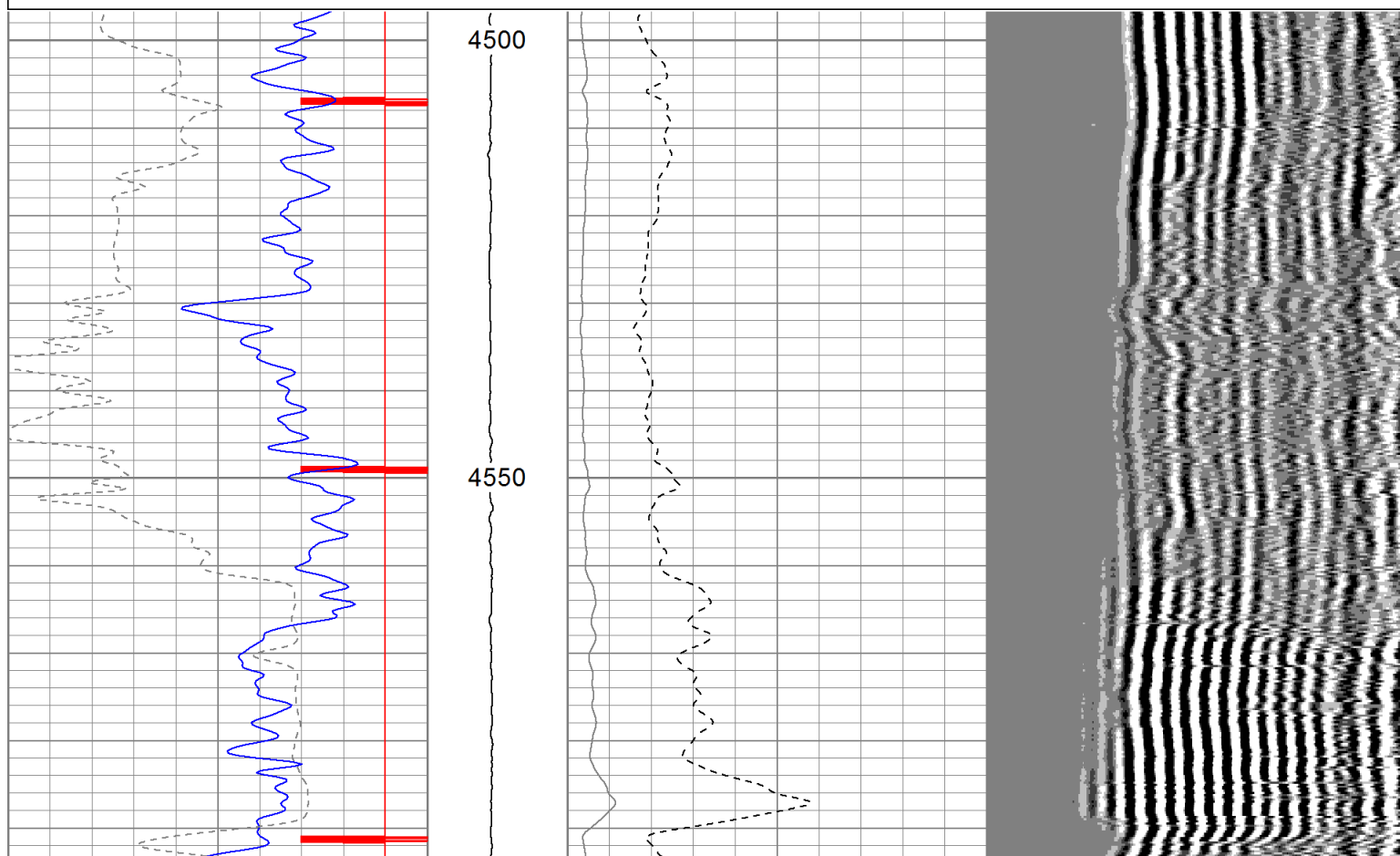
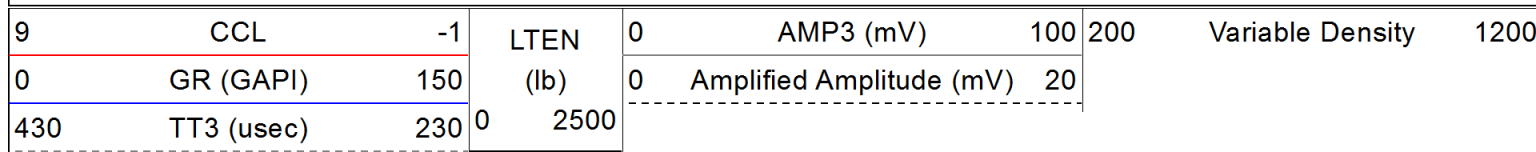




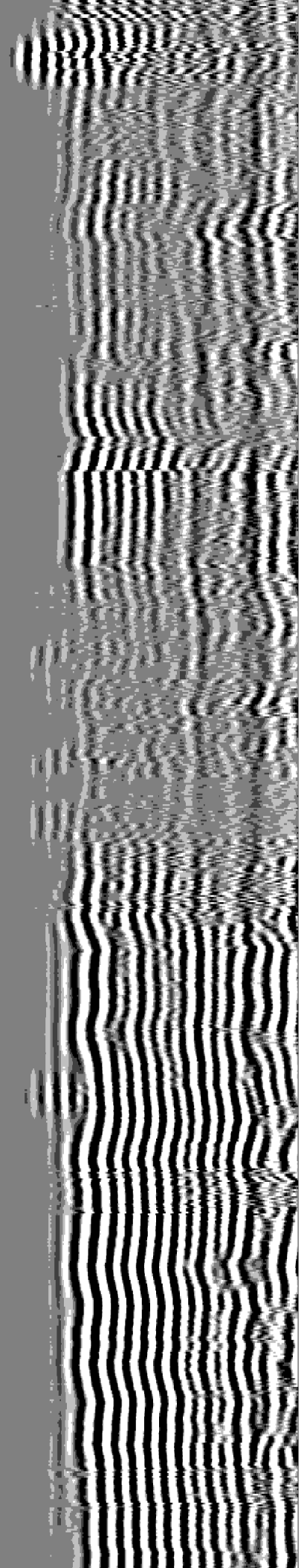
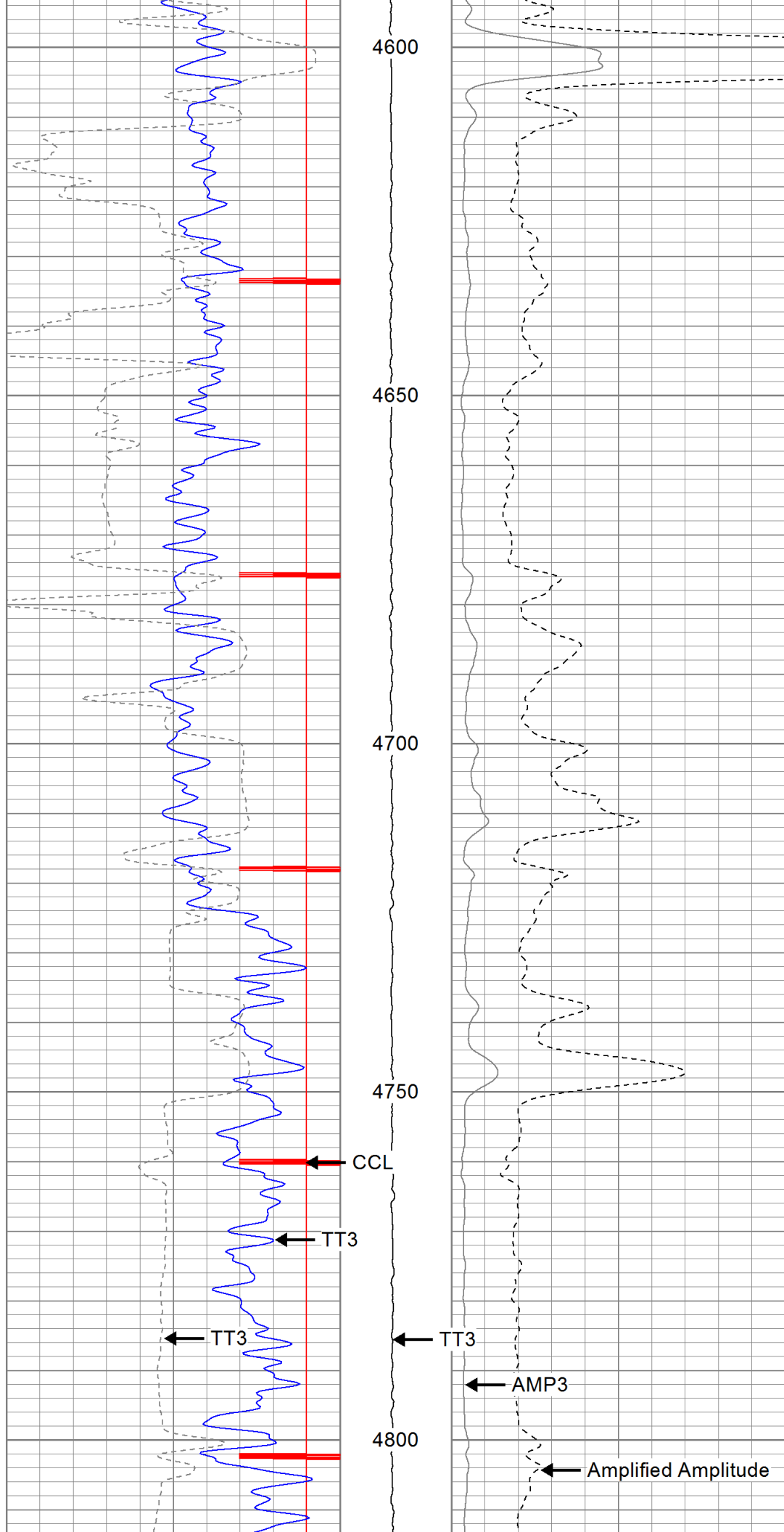
**The Perforators**  
LLC

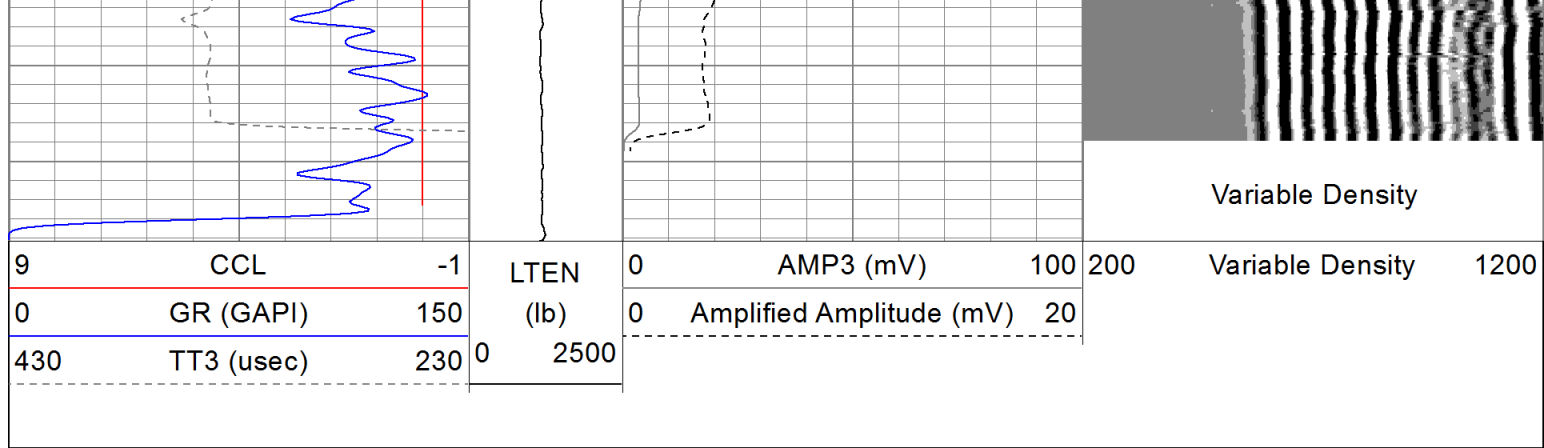
# Repeat Section

Database File: br fed 6-18-1-103.db  
 Dataset Pathname: pass1  
 Presentation Format: cbl  
 Dataset Creation: Wed Oct 03 10:07:32 2012 by Log Std Casedhole 10081  
 Charted by: Depth in Feet scaled 1:240









Calibration Report				
Database File:	br fed 6-18-1-103.db			
Dataset Pathname:	pass1			
Dataset Creation:	Wed Oct 03 10:07:32 2012 by Log Std Casedhole 10081			
Gamma Ray Calibration Report				
Serial Number:	030405			
Tool Model:	P			
Performed:	Wed Sep 19 09:26:14 2012			
Calibrator Value:	150.0	GAPI		
Background Reading:	54.0	cps		
Calibrator Reading:	250.0	cps		
Sensitivity:	0.8000	GAPI/cps		
Cement Bond Log Calibration Report				
Serial Number:	020406			
Tool Model:	P			
Performed:	Wed Sep 19 09:26:35 2012			
Depth:	72.1177	ft		
Casing Diameter:	5.5	in		
	3' Spacing	5' Spacing		
Signal Zero:	1	1	mV	
Calibrated Amplitude:	81	81	mV	
Reading at Signal Zero:	0.0154785	0.0156494	V	
Reading in Free Pipe:	2.01156	2.41799	V	
Gain:	40.0785	33.3009		
Offset:	0.379645	0.478862		

Sensor	Offset (ft)	Schematic	Description	Len (ft)	OD (in)	Wt (lb)
			None	0.75	1.50	5.00
			TitanBig Big Titan 3 Bowspring Centralizer	3.00	2.75	25.00
WVF3 WVF5	11.90 10.90		CBL-P (020406) Probe Single Pin	8.75	2.75	45.00

