

Whiting Oil & Gas

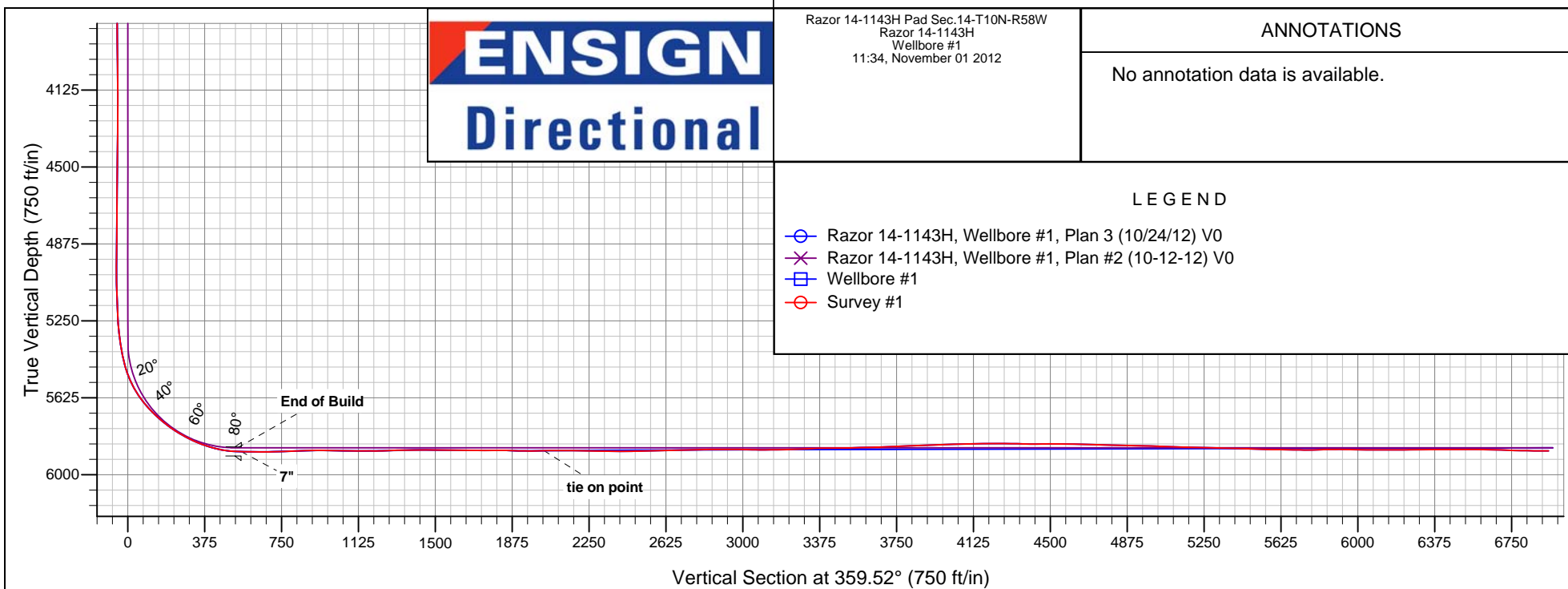
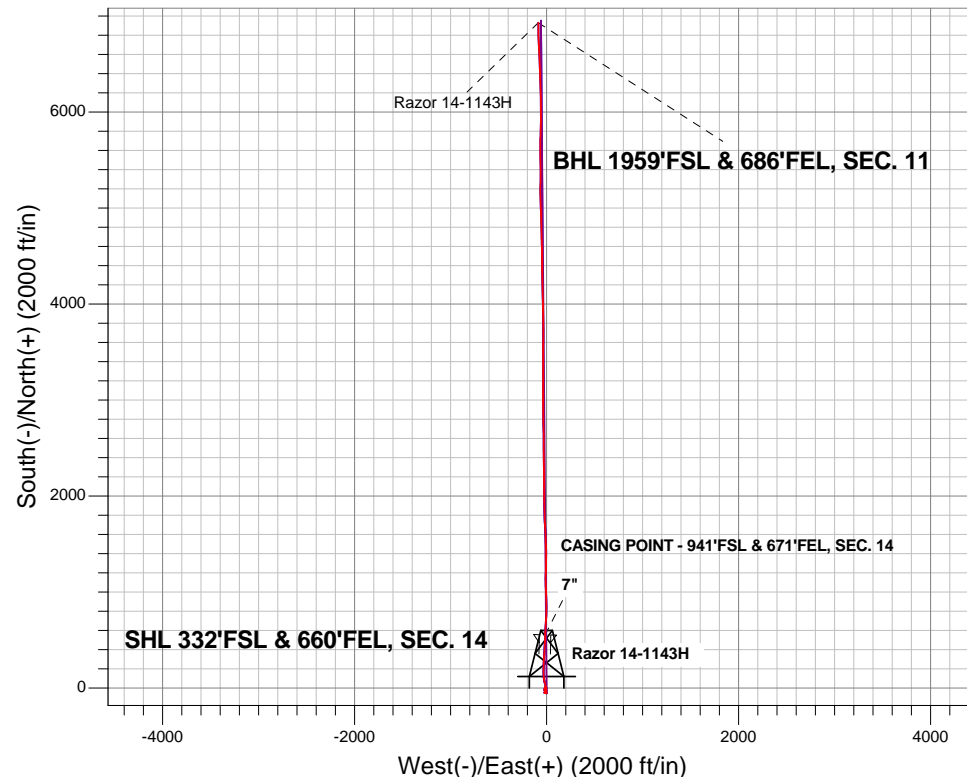
Well Name: Razor 14-1143H

Surface Location: Razor 14-1143H Pad Sec.14-T10N-R58W
North American Datum 1983 , US State Plane 1983 Colorado Northern Zone
Ground Elevation: 4936.6

| +N/-S | +E/-W | Northing | Easting | Latitude | Longitude | Slot |
|-------|-------|---|------------|-----------|-------------|------|
| 0.0 | 0.0 | 1550484.21 | 3463398.39 | 40.832447 | -103.825372 | |
| | | RKB - 16.5' WELL @ 4953.1ft (RKB - 16.5') | | | | |

FINAL SURVEY

Projected Bottom Hole Location
12608'MD 5886'TVD 6930'N & 84'W of SHL
90.00 degree Incl @ 358.80 degree AZM





Whiting Oil & Gas

SEC.14-T10N-R58W

Razor 14-1143H Pad Sec.14-T10N-R58W

Razor 14-1143H

Wellbore #1

Survey: Survey #1

Standard Survey Report

01 November, 2012

| | | | |
|------------------|-------------------------------------|-------------------------------------|-------------------------------|
| Company: | Whiting Oil & Gas | Local Co-ordinate Reference: | Well Razor 14-1143H |
| Project: | SEC.14-T10N-R58W | TVD Reference: | WELL @ 4953.1ft (RKB - 16.5') |
| Site: | Razor 14-1143H Pad Sec.14-T10N-R58W | MD Reference: | WELL @ 4953.1ft (RKB - 16.5') |
| Well: | Razor 14-1143H | North Reference: | True |
| Wellbore: | Wellbore #1 | Survey Calculation Method: | Minimum Curvature |
| Design: | Wellbore #1 | Database: | Landmark |

Survey

| Measured Depth (ft) | Inclination (°) | Azimuth (°) | Vertical Depth (ft) | +N/-S (ft) | +E/-W (ft) | Vertical Section (ft) | Dogleg Rate (°/100ft) | Build Rate (°/100ft) | Turn Rate (°/100ft) |
|---------------------|-----------------|-------------|---------------------|------------|------------|-----------------------|-----------------------|----------------------|---------------------|
| 1,139.0 | 1.40 | 197.20 | 1,138.7 | 5.0 | -16.1 | 5.1 | 0.27 | -0.21 | -6.60 |
| 1,234.0 | 1.50 | 197.90 | 1,233.7 | 2.7 | -16.8 | 2.8 | 0.11 | 0.11 | 0.74 |
| 1,325.0 | 1.50 | 200.20 | 1,324.7 | 0.4 | -17.6 | 0.6 | 0.07 | 0.00 | 2.53 |
| 1,419.0 | 1.70 | 195.30 | 1,418.6 | -2.1 | -18.4 | -1.9 | 0.26 | 0.21 | -5.21 |
| 1,512.0 | 2.20 | 198.10 | 1,511.6 | -5.1 | -19.3 | -4.9 | 0.55 | 0.54 | 3.01 |
| 1,660.0 | 1.80 | 193.90 | 1,659.5 | -10.1 | -20.8 | -9.9 | 0.29 | -0.27 | -2.84 |
| 1,734.0 | 1.80 | 207.50 | 1,733.5 | -12.2 | -21.6 | -12.0 | 0.58 | 0.00 | 18.38 |
| 1,826.0 | 1.50 | 201.60 | 1,825.4 | -14.6 | -22.7 | -14.4 | 0.37 | -0.33 | -6.41 |
| 1,919.0 | 1.70 | 173.40 | 1,918.4 | -17.1 | -23.0 | -16.9 | 0.86 | 0.22 | -30.32 |
| 2,011.0 | 1.90 | 177.30 | 2,010.3 | -20.0 | -22.8 | -19.8 | 0.25 | 0.22 | 4.24 |
| 2,102.0 | 1.80 | 166.20 | 2,101.3 | -22.9 | -22.3 | -22.7 | 0.41 | -0.11 | -12.20 |
| 2,193.0 | 1.70 | 152.00 | 2,192.2 | -25.5 | -21.4 | -25.3 | 0.49 | -0.11 | -15.60 |
| 2,288.0 | 1.50 | 142.30 | 2,287.2 | -27.7 | -19.9 | -27.5 | 0.35 | -0.21 | -10.21 |
| 2,383.0 | 1.60 | 147.10 | 2,382.2 | -29.8 | -18.5 | -29.6 | 0.17 | 0.11 | 5.05 |
| 2,475.0 | 1.20 | 149.90 | 2,474.1 | -31.7 | -17.3 | -31.6 | 0.44 | -0.43 | 3.04 |
| 2,570.0 | 1.70 | 162.50 | 2,569.1 | -33.9 | -16.4 | -33.8 | 0.62 | 0.53 | 13.26 |
| 2,638.0 | 1.40 | 182.60 | 2,637.1 | -35.7 | -16.1 | -35.6 | 0.91 | -0.44 | 29.56 |
| 2,765.0 | 1.30 | 192.90 | 2,764.1 | -38.7 | -16.5 | -38.5 | 0.21 | -0.08 | 8.11 |
| 2,860.0 | 1.10 | 197.70 | 2,859.0 | -40.6 | -17.0 | -40.4 | 0.24 | -0.21 | 5.05 |
| 2,955.0 | 1.00 | 191.70 | 2,954.0 | -42.3 | -17.4 | -42.1 | 0.16 | -0.11 | -6.32 |
| 3,050.0 | 1.20 | 210.00 | 3,049.0 | -43.9 | -18.1 | -43.8 | 0.42 | 0.21 | 19.26 |
| 3,145.0 | 0.90 | 214.60 | 3,144.0 | -45.4 | -19.0 | -45.2 | 0.33 | -0.32 | 4.84 |
| 3,240.0 | 1.10 | 219.30 | 3,239.0 | -46.7 | -20.0 | -46.6 | 0.23 | 0.21 | 4.95 |
| 3,335.0 | 0.70 | 226.20 | 3,334.0 | -47.8 | -21.0 | -47.7 | 0.44 | -0.42 | 7.26 |
| 3,430.0 | 0.40 | 208.20 | 3,429.0 | -48.5 | -21.6 | -48.3 | 0.36 | -0.32 | -18.95 |
| 3,524.0 | 0.60 | 225.30 | 3,523.0 | -49.2 | -22.1 | -49.0 | 0.26 | 0.21 | 18.19 |
| 3,619.0 | 1.10 | 111.60 | 3,617.9 | -49.8 | -21.6 | -49.7 | 1.53 | 0.53 | -119.68 |
| 3,714.0 | 1.80 | 121.20 | 3,712.9 | -51.0 | -19.5 | -50.8 | 0.78 | 0.74 | 10.11 |
| 3,808.0 | 0.40 | 45.80 | 3,806.9 | -51.5 | -18.0 | -51.3 | 1.85 | -1.49 | -80.21 |
| 3,903.0 | 0.40 | 311.60 | 3,901.9 | -51.0 | -18.0 | -50.9 | 0.62 | 0.00 | -99.16 |
| 3,998.0 | 1.10 | 298.60 | 3,996.9 | -50.4 | -19.1 | -50.2 | 0.75 | 0.74 | -13.68 |
| 4,093.0 | 1.30 | 315.30 | 4,091.9 | -49.2 | -20.6 | -49.0 | 0.42 | 0.21 | 17.58 |
| 4,188.0 | 0.10 | 180.10 | 4,186.9 | -48.5 | -21.4 | -48.3 | 1.45 | -1.26 | -142.32 |
| 4,283.0 | 1.70 | 100.30 | 4,281.8 | -48.8 | -20.0 | -48.7 | 1.77 | 1.68 | -84.00 |
| 4,378.0 | 1.90 | 114.00 | 4,376.8 | -49.7 | -17.2 | -49.6 | 0.50 | 0.21 | 14.42 |
| 4,473.0 | 1.70 | 105.60 | 4,471.8 | -50.7 | -14.4 | -50.6 | 0.35 | -0.21 | -8.84 |
| 4,567.0 | 1.80 | 113.00 | 4,565.7 | -51.7 | -11.7 | -51.6 | 0.26 | 0.11 | 7.87 |
| 4,662.0 | 1.60 | 100.70 | 4,660.7 | -52.5 | -9.0 | -52.5 | 0.44 | -0.21 | -12.95 |
| 4,757.0 | 1.80 | 103.10 | 4,755.6 | -53.1 | -6.2 | -53.1 | 0.22 | 0.21 | 2.53 |
| 4,853.0 | 1.30 | 109.40 | 4,851.6 | -53.8 | -3.7 | -53.8 | 0.55 | -0.52 | 6.56 |
| 4,947.0 | 1.30 | 100.80 | 4,945.6 | -54.4 | -1.7 | -54.4 | 0.21 | 0.00 | -9.15 |
| 5,042.0 | 1.10 | 76.80 | 5,040.5 | -54.4 | 0.3 | -54.4 | 0.56 | -0.21 | -25.26 |
| 5,137.0 | 2.30 | 6.40 | 5,135.5 | -52.3 | 1.4 | -52.3 | 2.31 | 1.26 | -74.11 |
| 5,201.0 | 2.60 | 6.60 | 5,199.5 | -49.5 | 1.7 | -49.6 | 0.47 | 0.47 | 0.31 |
| 5,232.0 | 2.50 | 0.80 | 5,230.4 | -48.2 | 1.8 | -48.2 | 0.89 | -0.32 | -18.71 |
| 5,264.0 | 3.50 | 353.30 | 5,262.4 | -46.5 | 1.7 | -46.5 | 3.35 | 3.13 | -23.44 |
| 5,296.0 | 5.50 | 355.00 | 5,294.3 | -44.0 | 1.4 | -44.0 | 6.26 | 6.25 | 5.31 |
| 5,327.0 | 7.20 | 356.20 | 5,325.1 | -40.6 | 1.2 | -40.6 | 5.50 | 5.48 | 3.87 |
| 5,359.0 | 8.80 | 355.70 | 5,356.8 | -36.1 | 0.8 | -36.1 | 5.00 | 5.00 | -1.56 |
| 5,390.0 | 9.90 | 354.70 | 5,387.4 | -31.1 | 0.4 | -31.1 | 3.59 | 3.55 | -3.23 |
| 5,401.0 | 10.10 | 353.60 | 5,398.2 | -29.2 | 0.2 | -29.2 | 2.51 | 1.82 | -10.00 |
| 5,433.0 | 11.70 | 352.20 | 5,429.6 | -23.2 | -0.5 | -23.2 | 5.07 | 5.00 | -4.38 |
| 5,464.0 | 14.90 | 349.70 | 5,459.8 | -16.2 | -1.7 | -16.2 | 10.49 | 10.32 | -8.06 |
| 5,496.0 | 18.60 | 348.20 | 5,490.4 | -7.1 | -3.5 | -7.1 | 11.64 | 11.56 | -4.69 |

| | | | |
|------------------|-------------------------------------|-------------------------------------|-------------------------------|
| Company: | Whiting Oil & Gas | Local Co-ordinate Reference: | Well Razor 14-1143H |
| Project: | SEC.14-T10N-R58W | TVD Reference: | WELL @ 4953.1ft (RKB - 16.5') |
| Site: | Razor 14-1143H Pad Sec.14-T10N-R58W | MD Reference: | WELL @ 4953.1ft (RKB - 16.5') |
| Well: | Razor 14-1143H | North Reference: | True |
| Wellbore: | Wellbore #1 | Survey Calculation Method: | Minimum Curvature |
| Design: | Wellbore #1 | Database: | Landmark |

| Survey | | | | | | | | | |
|---------------------|-----------------|-------------|---------------------|-----------|-----------|-----------------------|-----------------------|----------------------|---------------------|
| Measured Depth (ft) | Inclination (°) | Azimuth (°) | Vertical Depth (ft) | +N-S (ft) | +E-W (ft) | Vertical Section (ft) | Dogleg Rate (°/100ft) | Build Rate (°/100ft) | Turn Rate (°/100ft) |
| 5,528.0 | 22.10 | 346.10 | 5,520.4 | 3.7 | -5.9 | 3.8 | 11.17 | 10.94 | -6.56 |
| 5,559.0 | 25.80 | 345.90 | 5,548.7 | 15.9 | -9.0 | 16.0 | 11.94 | 11.94 | -0.65 |
| 5,591.0 | 29.40 | 346.20 | 5,577.1 | 30.3 | -12.6 | 30.4 | 11.26 | 11.25 | 0.94 |
| 5,623.0 | 33.10 | 345.70 | 5,604.4 | 46.4 | -16.6 | 46.5 | 11.59 | 11.56 | -1.56 |
| 5,654.0 | 36.70 | 347.80 | 5,629.9 | 63.7 | -20.6 | 63.8 | 12.24 | 11.61 | 6.77 |
| 5,686.0 | 40.00 | 349.60 | 5,655.0 | 83.1 | -24.5 | 83.3 | 10.89 | 10.31 | 5.63 |
| 5,718.0 | 43.20 | 351.90 | 5,678.9 | 104.1 | -27.9 | 104.3 | 11.08 | 10.00 | 7.19 |
| 5,750.0 | 45.80 | 355.50 | 5,701.7 | 126.4 | -30.4 | 126.6 | 11.32 | 8.13 | 11.25 |
| 5,781.0 | 48.20 | 358.40 | 5,722.9 | 149.0 | -31.6 | 149.3 | 10.33 | 7.74 | 9.35 |
| 5,813.0 | 50.50 | 0.10 | 5,743.7 | 173.3 | -31.9 | 173.5 | 8.24 | 7.19 | 5.31 |
| 5,845.0 | 53.60 | 2.00 | 5,763.4 | 198.5 | -31.4 | 198.8 | 10.76 | 9.69 | 5.94 |
| 5,876.0 | 56.50 | 1.90 | 5,781.1 | 223.9 | -30.5 | 224.2 | 9.36 | 9.35 | -0.32 |
| 5,908.0 | 59.30 | 2.00 | 5,798.1 | 251.0 | -29.6 | 251.2 | 8.75 | 8.75 | 0.31 |
| 5,940.0 | 61.20 | 2.40 | 5,814.0 | 278.8 | -28.5 | 279.0 | 6.04 | 5.94 | 1.25 |
| 5,971.0 | 63.80 | 3.60 | 5,828.3 | 306.2 | -27.1 | 306.4 | 9.06 | 8.39 | 3.87 |
| 6,003.0 | 67.10 | 4.70 | 5,841.6 | 335.2 | -25.0 | 335.4 | 10.78 | 10.31 | 3.44 |
| 6,035.0 | 70.30 | 4.00 | 5,853.3 | 365.0 | -22.7 | 365.1 | 10.21 | 10.00 | -2.19 |
| 6,066.0 | 73.00 | 4.20 | 5,863.0 | 394.3 | -20.6 | 394.5 | 8.73 | 8.71 | 0.65 |
| 6,098.0 | 75.80 | 3.60 | 5,871.6 | 425.1 | -18.5 | 425.2 | 8.93 | 8.75 | -1.88 |
| 6,130.0 | 78.70 | 2.20 | 5,878.7 | 456.2 | -17.0 | 456.3 | 10.02 | 9.06 | -4.38 |
| 6,161.0 | 82.70 | 1.30 | 5,883.7 | 486.8 | -16.0 | 486.9 | 13.22 | 12.90 | -2.90 |
| 6,188.0 | 86.30 | 1.70 | 5,886.3 | 513.7 | -15.3 | 513.8 | 13.41 | 13.33 | 1.48 |
| 6,228.0 | 89.58 | 1.70 | 5,887.7 | 553.6 | -14.1 | 553.7 | 8.20 | 8.20 | 0.00 |
| 7" | | | | | | | | | |
| 6,238.0 | 90.40 | 1.70 | 5,887.7 | 563.6 | -13.8 | 563.7 | 8.20 | 8.20 | 0.00 |
| 6,284.0 | 88.50 | 3.60 | 5,888.2 | 609.5 | -11.7 | 609.6 | 5.84 | -4.13 | 4.13 |
| 6,316.0 | 89.00 | 3.10 | 5,888.9 | 641.5 | -9.8 | 641.5 | 2.21 | 1.56 | -1.56 |
| 6,348.0 | 90.20 | 3.50 | 5,889.1 | 673.4 | -8.0 | 673.5 | 3.95 | 3.75 | 1.25 |
| 6,379.0 | 91.30 | 3.30 | 5,888.7 | 704.4 | -6.2 | 704.4 | 3.61 | 3.55 | -0.65 |
| 6,411.0 | 92.00 | 3.10 | 5,887.7 | 736.3 | -4.4 | 736.3 | 2.27 | 2.19 | -0.63 |
| 6,443.0 | 92.10 | 2.20 | 5,886.6 | 768.3 | -2.9 | 768.3 | 2.83 | 0.31 | -2.81 |
| 6,474.0 | 92.20 | 1.30 | 5,885.4 | 799.2 | -2.0 | 799.2 | 2.92 | 0.32 | -2.90 |
| 6,506.0 | 91.90 | 0.30 | 5,884.3 | 831.2 | -1.5 | 831.2 | 3.26 | -0.94 | -3.13 |
| 6,538.0 | 91.90 | 359.60 | 5,883.2 | 863.2 | -1.5 | 863.2 | 2.19 | 0.00 | -2.19 |
| 6,569.0 | 91.50 | 359.20 | 5,882.3 | 894.2 | -1.9 | 894.1 | 1.82 | -1.29 | -1.29 |
| 6,601.0 | 90.60 | 358.40 | 5,881.7 | 926.1 | -2.5 | 926.1 | 3.76 | -2.81 | -2.50 |
| 6,632.0 | 88.70 | 357.70 | 5,881.9 | 957.1 | -3.6 | 957.1 | 6.53 | -6.13 | -2.26 |
| 6,664.0 | 88.80 | 357.30 | 5,882.6 | 989.1 | -5.0 | 989.1 | 1.29 | 0.31 | -1.25 |
| 6,695.0 | 89.30 | 358.40 | 5,883.1 | 1,020.1 | -6.1 | 1,020.1 | 3.90 | 1.61 | 3.55 |
| 6,726.0 | 89.30 | 358.40 | 5,883.5 | 1,051.0 | -7.0 | 1,051.1 | 0.00 | 0.00 | 0.00 |
| 6,758.0 | 89.90 | 358.40 | 5,883.7 | 1,083.0 | -7.9 | 1,083.1 | 1.88 | 1.88 | 0.00 |
| 6,790.0 | 89.90 | 359.20 | 5,883.8 | 1,115.0 | -8.6 | 1,115.1 | 2.50 | 0.00 | 2.50 |
| 6,822.0 | 89.70 | 0.80 | 5,883.9 | 1,147.0 | -8.6 | 1,147.1 | 5.04 | -0.63 | 5.00 |
| 6,853.0 | 89.30 | 1.20 | 5,884.2 | 1,178.0 | -8.0 | 1,178.0 | 1.82 | -1.29 | 1.29 |
| 6,885.0 | 90.20 | 1.90 | 5,884.3 | 1,210.0 | -7.2 | 1,210.0 | 3.56 | 2.81 | 2.19 |
| 6,917.0 | 91.80 | 2.90 | 5,883.8 | 1,242.0 | -5.8 | 1,242.0 | 5.90 | 5.00 | 3.13 |
| 6,948.0 | 91.60 | 2.60 | 5,882.8 | 1,272.9 | -4.3 | 1,272.9 | 1.16 | -0.65 | -0.97 |
| 6,980.0 | 91.60 | 1.20 | 5,881.9 | 1,304.9 | -3.3 | 1,304.9 | 4.37 | 0.00 | -4.38 |
| 7,012.0 | 91.60 | 0.50 | 5,881.0 | 1,336.9 | -2.8 | 1,336.9 | 2.19 | 0.00 | -2.19 |
| 7,043.0 | 91.50 | 359.60 | 5,880.2 | 1,367.9 | -2.8 | 1,367.8 | 2.92 | -0.32 | -2.90 |
| 7,075.0 | 91.10 | 359.20 | 5,879.5 | 1,399.9 | -3.1 | 1,399.8 | 1.77 | -1.25 | -1.25 |
| 7,107.0 | 89.90 | 358.40 | 5,879.2 | 1,431.8 | -3.8 | 1,431.8 | 4.51 | -3.75 | -2.50 |
| 7,139.0 | 88.90 | 358.40 | 5,879.5 | 1,463.8 | -4.7 | 1,463.8 | 3.13 | -3.13 | 0.00 |
| 7,170.0 | 88.80 | 357.80 | 5,880.2 | 1,494.8 | -5.7 | 1,494.8 | 1.96 | -0.32 | -1.94 |

| | | | |
|------------------|-------------------------------------|-------------------------------------|-------------------------------|
| Company: | Whiting Oil & Gas | Local Co-ordinate Reference: | Well Razor 14-1143H |
| Project: | SEC.14-T10N-R58W | TVD Reference: | WELL @ 4953.1ft (RKB - 16.5') |
| Site: | Razor 14-1143H Pad Sec.14-T10N-R58W | MD Reference: | WELL @ 4953.1ft (RKB - 16.5') |
| Well: | Razor 14-1143H | North Reference: | True |
| Wellbore: | Wellbore #1 | Survey Calculation Method: | Minimum Curvature |
| Design: | Wellbore #1 | Database: | Landmark |

| Survey | | | | | | | | | |
|---------------------|-----------------|-------------|---------------------|-----------|-----------|-----------------------|-----------------------|----------------------|---------------------|
| Measured Depth (ft) | Inclination (°) | Azimuth (°) | Vertical Depth (ft) | +N-S (ft) | +E-W (ft) | Vertical Section (ft) | Dogleg Rate (°/100ft) | Build Rate (°/100ft) | Turn Rate (°/100ft) |
| 7,202.0 | 89.30 | 357.50 | 5,880.7 | 1,526.8 | -7.0 | 1,526.8 | 1.82 | 1.56 | -0.94 |
| 7,234.0 | 89.80 | 357.30 | 5,880.9 | 1,558.7 | -8.5 | 1,558.8 | 1.68 | 1.56 | -0.63 |
| 7,266.0 | 90.10 | 357.00 | 5,881.0 | 1,590.7 | -10.1 | 1,590.7 | 1.33 | 0.94 | -0.94 |
| 7,297.0 | 89.40 | 356.80 | 5,881.1 | 1,621.7 | -11.7 | 1,621.7 | 2.35 | -2.26 | -0.65 |
| 7,329.0 | 89.60 | 356.40 | 5,881.4 | 1,653.6 | -13.6 | 1,653.7 | 1.40 | 0.63 | -1.25 |
| 7,361.0 | 90.40 | 356.10 | 5,881.4 | 1,685.5 | -15.7 | 1,685.6 | 2.67 | 2.50 | -0.94 |
| 7,392.0 | 90.10 | 356.10 | 5,881.2 | 1,716.5 | -17.8 | 1,716.5 | 0.97 | -0.97 | 0.00 |
| 7,424.0 | 89.60 | 357.50 | 5,881.3 | 1,748.4 | -19.6 | 1,748.5 | 4.65 | -1.56 | 4.38 |
| 7,456.0 | 90.30 | 357.70 | 5,881.4 | 1,780.4 | -21.0 | 1,780.5 | 2.28 | 2.19 | 0.63 |
| 7,487.0 | 90.00 | 359.10 | 5,881.3 | 1,811.4 | -21.8 | 1,811.5 | 4.62 | -0.97 | 4.52 |
| 7,519.0 | 88.20 | 358.70 | 5,881.8 | 1,843.4 | -22.4 | 1,843.5 | 5.76 | -5.63 | -1.25 |
| 7,550.0 | 88.20 | 358.70 | 5,882.8 | 1,874.3 | -23.1 | 1,874.5 | 0.00 | 0.00 | 0.00 |
| 7,582.0 | 88.60 | 359.90 | 5,883.6 | 1,906.3 | -23.5 | 1,906.4 | 3.95 | 1.25 | 3.75 |
| 7,614.0 | 89.30 | 0.30 | 5,884.2 | 1,938.3 | -23.5 | 1,938.4 | 2.52 | 2.19 | 1.25 |
| 7,645.0 | 90.40 | 0.10 | 5,884.3 | 1,969.3 | -23.4 | 1,969.4 | 3.61 | 3.55 | -0.65 |
| 7,675.0 | 91.20 | 359.80 | 5,883.9 | 1,999.3 | -23.4 | 1,999.4 | 2.85 | 2.67 | -1.00 |
| 7,706.0 | 91.50 | 359.80 | 5,883.2 | 2,030.3 | -23.5 | 2,030.4 | 0.97 | 0.97 | 0.00 |
| 7,737.0 | 90.80 | 359.20 | 5,882.5 | 2,061.3 | -23.8 | 2,061.4 | 2.97 | -2.26 | -1.94 |
| 7,768.0 | 89.80 | 359.60 | 5,882.4 | 2,092.3 | -24.1 | 2,092.4 | 3.47 | -3.23 | 1.29 |
| 7,799.0 | 89.60 | 359.80 | 5,882.5 | 2,123.3 | -24.3 | 2,123.4 | 0.91 | -0.65 | 0.65 |
| 7,830.0 | 89.50 | 359.60 | 5,882.8 | 2,154.3 | -24.4 | 2,154.4 | 0.72 | -0.32 | -0.65 |
| 7,861.0 | 89.40 | 358.90 | 5,883.1 | 2,185.3 | -24.8 | 2,185.4 | 2.28 | -0.32 | -2.26 |
| 7,892.0 | 89.00 | 358.40 | 5,883.5 | 2,216.3 | -25.6 | 2,216.4 | 2.07 | -1.29 | -1.61 |
| 7,923.0 | 88.60 | 357.80 | 5,884.2 | 2,247.2 | -26.6 | 2,247.4 | 2.33 | -1.29 | -1.94 |
| 7,954.0 | 88.70 | 358.40 | 5,884.9 | 2,278.2 | -27.6 | 2,278.4 | 1.96 | 0.32 | 1.94 |
| 7,984.0 | 88.70 | 358.40 | 5,885.6 | 2,308.2 | -28.5 | 2,308.4 | 0.00 | 0.00 | 0.00 |
| 8,015.0 | 89.20 | 358.50 | 5,886.1 | 2,339.2 | -29.3 | 2,339.3 | 1.64 | 1.61 | 0.32 |
| 8,046.0 | 90.20 | 0.30 | 5,886.3 | 2,370.2 | -29.6 | 2,370.3 | 6.64 | 3.23 | 5.81 |
| 8,076.0 | 90.50 | 0.60 | 5,886.1 | 2,400.2 | -29.4 | 2,400.3 | 1.41 | 1.00 | 1.00 |
| 8,107.0 | 90.00 | 359.60 | 5,886.0 | 2,431.2 | -29.3 | 2,431.3 | 3.61 | -1.61 | -3.23 |
| 8,137.0 | 90.30 | 359.80 | 5,885.9 | 2,461.2 | -29.5 | 2,461.3 | 1.20 | 1.00 | 0.67 |
| 8,168.0 | 91.50 | 0.60 | 5,885.4 | 2,492.2 | -29.4 | 2,492.3 | 4.65 | 3.87 | 2.58 |
| 8,199.0 | 91.70 | 359.90 | 5,884.6 | 2,523.2 | -29.2 | 2,523.3 | 2.35 | 0.65 | -2.26 |
| 8,230.0 | 91.50 | 359.90 | 5,883.7 | 2,554.1 | -29.3 | 2,554.3 | 0.65 | -0.65 | 0.00 |
| 8,261.0 | 91.10 | 359.40 | 5,883.0 | 2,585.1 | -29.5 | 2,585.3 | 2.07 | -1.29 | -1.61 |
| 8,291.0 | 91.00 | 359.10 | 5,882.4 | 2,615.1 | -29.9 | 2,615.3 | 1.05 | -0.33 | -1.00 |
| 8,322.0 | 91.50 | 359.20 | 5,881.8 | 2,646.1 | -30.3 | 2,646.3 | 1.64 | 1.61 | 0.32 |
| 8,353.0 | 91.70 | 359.40 | 5,880.9 | 2,677.1 | -30.7 | 2,677.3 | 0.91 | 0.65 | 0.65 |
| 8,384.0 | 91.60 | 358.90 | 5,880.0 | 2,708.1 | -31.2 | 2,708.3 | 1.64 | -0.32 | -1.61 |
| 8,415.0 | 91.60 | 358.70 | 5,879.1 | 2,739.1 | -31.8 | 2,739.2 | 0.64 | 0.00 | -0.65 |
| 8,446.0 | 91.30 | 358.20 | 5,878.4 | 2,770.0 | -32.7 | 2,770.2 | 1.88 | -0.97 | -1.61 |
| 8,477.0 | 91.00 | 359.10 | 5,877.7 | 2,801.0 | -33.4 | 2,801.2 | 3.06 | -0.97 | 2.90 |
| 8,507.0 | 91.00 | 358.90 | 5,877.2 | 2,831.0 | -33.9 | 2,831.2 | 0.67 | 0.00 | -0.67 |
| 8,538.0 | 90.80 | 358.50 | 5,876.7 | 2,862.0 | -34.6 | 2,862.2 | 1.44 | -0.65 | -1.29 |
| 8,569.0 | 89.40 | 359.20 | 5,876.7 | 2,893.0 | -35.2 | 2,893.2 | 5.05 | -4.52 | 2.26 |
| 8,576.0 | 89.40 | 359.24 | 5,876.7 | 2,900.0 | -35.3 | 2,900.2 | 0.65 | 0.00 | 0.65 |
| WP 1 | | | | | | | | | |
| 8,600.0 | 89.40 | 359.40 | 5,877.0 | 2,924.0 | -35.6 | 2,924.2 | 0.65 | 0.00 | 0.65 |
| 8,631.0 | 89.20 | 359.40 | 5,877.4 | 2,955.0 | -35.9 | 2,955.2 | 0.65 | -0.65 | 0.00 |
| 8,661.0 | 89.50 | 359.40 | 5,877.7 | 2,985.0 | -36.3 | 2,985.2 | 1.00 | 1.00 | 0.00 |
| 8,692.0 | 89.30 | 359.80 | 5,878.0 | 3,016.0 | -36.5 | 3,016.2 | 1.44 | -0.65 | 1.29 |
| 8,723.0 | 88.50 | 0.50 | 5,878.6 | 3,047.0 | -36.4 | 3,047.2 | 3.43 | -2.58 | 2.26 |
| 8,754.0 | 89.70 | 0.60 | 5,879.1 | 3,078.0 | -36.1 | 3,078.2 | 3.88 | 3.87 | 0.32 |
| 8,785.0 | 90.20 | 0.60 | 5,879.1 | 3,109.0 | -35.8 | 3,109.2 | 1.61 | 1.61 | 0.00 |

| | | | |
|------------------|-------------------------------------|-------------------------------------|-------------------------------|
| Company: | Whiting Oil & Gas | Local Co-ordinate Reference: | Well Razor 14-1143H |
| Project: | SEC.14-T10N-R58W | TVD Reference: | WELL @ 4953.1ft (RKB - 16.5') |
| Site: | Razor 14-1143H Pad Sec.14-T10N-R58W | MD Reference: | WELL @ 4953.1ft (RKB - 16.5') |
| Well: | Razor 14-1143H | North Reference: | True |
| Wellbore: | Wellbore #1 | Survey Calculation Method: | Minimum Curvature |
| Design: | Wellbore #1 | Database: | Landmark |

Survey

| Measured Depth (ft) | Inclination (°) | Azimuth (°) | Vertical Depth (ft) | +N-S (ft) | +E-W (ft) | Vertical Section (ft) | Dogleg Rate (°/100ft) | Build Rate (°/100ft) | Turn Rate (°/100ft) |
|---------------------|-----------------|-------------|---------------------|-----------|-----------|-----------------------|-----------------------|----------------------|---------------------|
| 8,816.0 | 90.80 | 359.80 | 5,878.9 | 3,140.0 | -35.7 | 3,140.2 | 3.23 | 1.94 | -2.58 |
| 8,846.0 | 90.70 | 358.90 | 5,878.5 | 3,170.0 | -36.0 | 3,170.2 | 3.02 | -0.33 | -3.00 |
| 8,877.0 | 91.20 | 359.90 | 5,878.0 | 3,201.0 | -36.3 | 3,201.2 | 3.61 | 1.61 | 3.23 |
| 8,908.0 | 91.40 | 0.10 | 5,877.3 | 3,232.0 | -36.3 | 3,232.1 | 0.91 | 0.65 | 0.65 |
| 8,938.0 | 92.00 | 0.60 | 5,876.4 | 3,261.9 | -36.1 | 3,262.1 | 2.60 | 2.00 | 1.67 |
| 8,969.0 | 93.10 | 1.00 | 5,875.0 | 3,292.9 | -35.7 | 3,293.1 | 3.78 | 3.55 | 1.29 |
| 9,000.0 | 93.20 | 1.20 | 5,873.3 | 3,323.9 | -35.1 | 3,324.0 | 0.72 | 0.32 | 0.65 |
| 9,031.0 | 92.00 | 0.60 | 5,871.9 | 3,354.8 | -34.6 | 3,355.0 | 4.33 | -3.87 | -1.94 |
| 9,062.0 | 90.80 | 359.90 | 5,871.1 | 3,385.8 | -34.5 | 3,386.0 | 4.48 | -3.87 | -2.26 |
| 9,093.0 | 90.50 | 359.40 | 5,870.8 | 3,416.8 | -34.7 | 3,417.0 | 1.88 | -0.97 | -1.61 |
| 9,124.0 | 90.50 | 359.10 | 5,870.5 | 3,447.8 | -35.1 | 3,448.0 | 0.97 | 0.00 | -0.97 |
| 9,155.0 | 90.50 | 359.10 | 5,870.2 | 3,478.8 | -35.6 | 3,479.0 | 0.00 | 0.00 | 0.00 |
| 9,186.0 | 90.70 | 359.40 | 5,869.9 | 3,509.8 | -36.0 | 3,510.0 | 1.16 | 0.65 | 0.97 |
| 9,217.0 | 91.40 | 0.80 | 5,869.3 | 3,540.8 | -35.9 | 3,541.0 | 5.05 | 2.26 | 4.52 |
| 9,248.0 | 91.80 | 1.90 | 5,868.5 | 3,571.8 | -35.2 | 3,571.9 | 3.77 | 1.29 | 3.55 |
| 9,278.0 | 91.50 | 1.50 | 5,867.6 | 3,601.7 | -34.3 | 3,601.9 | 1.67 | -1.00 | -1.33 |
| 9,309.0 | 91.60 | 0.80 | 5,866.8 | 3,632.7 | -33.7 | 3,632.9 | 2.28 | 0.32 | -2.26 |
| 9,339.0 | 92.30 | 0.50 | 5,865.8 | 3,662.7 | -33.3 | 3,662.9 | 2.54 | 2.33 | -1.00 |
| 9,370.0 | 92.50 | 0.30 | 5,864.5 | 3,693.7 | -33.1 | 3,693.8 | 0.91 | 0.65 | -0.65 |
| 9,401.0 | 93.10 | 359.90 | 5,862.9 | 3,724.6 | -33.1 | 3,724.8 | 2.33 | 1.94 | -1.29 |
| 9,431.0 | 92.20 | 359.80 | 5,861.6 | 3,754.6 | -33.2 | 3,754.7 | 3.02 | -3.00 | -0.33 |
| 9,462.0 | 92.10 | 359.40 | 5,860.4 | 3,785.6 | -33.4 | 3,785.7 | 1.33 | -0.32 | -1.29 |
| 9,493.0 | 91.50 | 359.40 | 5,859.4 | 3,816.6 | -33.7 | 3,816.7 | 1.94 | -1.94 | 0.00 |
| 9,524.0 | 91.20 | 359.20 | 5,858.7 | 3,847.6 | -34.1 | 3,847.7 | 1.16 | -0.97 | -0.65 |
| 9,554.0 | 91.70 | 359.10 | 5,857.9 | 3,877.5 | -34.5 | 3,877.7 | 1.70 | 1.67 | -0.33 |
| 9,585.0 | 92.50 | 359.20 | 5,856.8 | 3,908.5 | -35.0 | 3,908.7 | 2.60 | 2.58 | 0.32 |
| 9,616.0 | 92.80 | 359.20 | 5,855.4 | 3,939.5 | -35.4 | 3,939.6 | 0.97 | 0.97 | 0.00 |
| 9,647.0 | 92.50 | 358.40 | 5,853.9 | 3,970.4 | -36.1 | 3,970.6 | 2.75 | -0.97 | -2.58 |
| 9,678.0 | 92.40 | 358.00 | 5,852.6 | 4,001.4 | -37.0 | 4,001.6 | 1.33 | -0.32 | -1.29 |
| 9,708.0 | 91.50 | 358.20 | 5,851.6 | 4,031.4 | -38.0 | 4,031.5 | 3.07 | -3.00 | 0.67 |
| 9,739.0 | 91.50 | 358.20 | 5,850.8 | 4,062.3 | -39.0 | 4,062.5 | 0.00 | 0.00 | 0.00 |
| 9,770.0 | 91.50 | 358.00 | 5,850.0 | 4,093.3 | -40.0 | 4,093.5 | 0.64 | 0.00 | -0.65 |
| 9,801.0 | 90.70 | 359.10 | 5,849.4 | 4,124.3 | -40.8 | 4,124.5 | 4.39 | -2.58 | 3.55 |
| 9,831.0 | 90.40 | 359.10 | 5,849.1 | 4,154.3 | -41.3 | 4,154.5 | 1.00 | -1.00 | 0.00 |
| 9,862.0 | 90.40 | 358.70 | 5,848.9 | 4,185.3 | -41.9 | 4,185.5 | 1.29 | 0.00 | -1.29 |
| 9,893.0 | 90.10 | 358.70 | 5,848.7 | 4,216.3 | -42.6 | 4,216.5 | 0.97 | -0.97 | 0.00 |
| 9,924.0 | 90.00 | 358.50 | 5,848.7 | 4,247.3 | -43.3 | 4,247.5 | 0.72 | -0.32 | -0.65 |
| 9,955.0 | 89.70 | 358.50 | 5,848.8 | 4,278.3 | -44.1 | 4,278.5 | 0.97 | -0.97 | 0.00 |
| 9,986.0 | 89.30 | 358.50 | 5,849.0 | 4,309.2 | -45.0 | 4,309.5 | 1.29 | -1.29 | 0.00 |
| 10,016.0 | 89.00 | 358.50 | 5,849.5 | 4,339.2 | -45.7 | 4,339.5 | 1.00 | -1.00 | 0.00 |
| 10,047.0 | 89.00 | 359.40 | 5,850.0 | 4,370.2 | -46.3 | 4,370.4 | 2.90 | 0.00 | 2.90 |
| 10,078.0 | 89.00 | 359.60 | 5,850.6 | 4,401.2 | -46.6 | 4,401.4 | 0.65 | 0.00 | 0.65 |
| 10,109.0 | 89.80 | 359.40 | 5,850.9 | 4,432.2 | -46.9 | 4,432.4 | 2.66 | 2.58 | -0.65 |
| 10,140.0 | 90.70 | 359.90 | 5,850.8 | 4,463.2 | -47.0 | 4,463.4 | 3.32 | 2.90 | 1.61 |
| 10,171.0 | 91.00 | 0.10 | 5,850.3 | 4,494.2 | -47.0 | 4,494.4 | 1.16 | 0.97 | 0.65 |
| 10,202.0 | 90.10 | 359.80 | 5,850.0 | 4,525.2 | -47.1 | 4,525.4 | 3.06 | -2.90 | -0.97 |
| 10,232.0 | 90.30 | 359.10 | 5,849.9 | 4,555.2 | -47.4 | 4,555.4 | 2.43 | 0.67 | -2.33 |
| 10,263.0 | 89.10 | 359.10 | 5,850.1 | 4,586.2 | -47.8 | 4,586.4 | 3.87 | -3.87 | 0.00 |
| 10,294.0 | 88.40 | 358.00 | 5,850.7 | 4,617.2 | -48.6 | 4,617.4 | 4.21 | -2.26 | -3.55 |
| 10,325.0 | 88.30 | 357.50 | 5,851.6 | 4,648.1 | -49.8 | 4,648.4 | 1.64 | -0.32 | -1.61 |
| 10,356.0 | 88.10 | 358.70 | 5,852.6 | 4,679.1 | -50.9 | 4,679.4 | 3.92 | -0.65 | 3.87 |
| 10,387.0 | 88.20 | 359.40 | 5,853.6 | 4,710.1 | -51.4 | 4,710.3 | 2.28 | 0.32 | 2.26 |
| 10,417.0 | 88.30 | 359.10 | 5,854.5 | 4,740.1 | -51.8 | 4,740.3 | 1.05 | 0.33 | -1.00 |
| 10,448.0 | 88.50 | 358.90 | 5,855.4 | 4,771.1 | -52.3 | 4,771.3 | 0.91 | 0.65 | -0.65 |

| | | | |
|------------------|-------------------------------------|-------------------------------------|-------------------------------|
| Company: | Whiting Oil & Gas | Local Co-ordinate Reference: | Well Razor 14-1143H |
| Project: | SEC.14-T10N-R58W | TVD Reference: | WELL @ 4953.1ft (RKB - 16.5') |
| Site: | Razor 14-1143H Pad Sec.14-T10N-R58W | MD Reference: | WELL @ 4953.1ft (RKB - 16.5') |
| Well: | Razor 14-1143H | North Reference: | True |
| Wellbore: | Wellbore #1 | Survey Calculation Method: | Minimum Curvature |
| Design: | Wellbore #1 | Database: | Landmark |

| Survey | | | | | | | | | | |
|---------------------|-----------------|-------------|---------------------|------------|------------|-----------------------|-----------------------|----------------------|---------------------|--|
| Measured Depth (ft) | Inclination (°) | Azimuth (°) | Vertical Depth (ft) | +N/-S (ft) | +E/-W (ft) | Vertical Section (ft) | Dogleg Rate (°/100ft) | Build Rate (°/100ft) | Turn Rate (°/100ft) | |
| 10,479.0 | 88.50 | 358.90 | 5,856.2 | 4,802.0 | -52.9 | 4,802.3 | 0.00 | 0.00 | 0.00 | |
| 10,510.0 | 88.80 | 358.70 | 5,856.9 | 4,833.0 | -53.6 | 4,833.3 | 1.16 | 0.97 | -0.65 | |
| 10,540.0 | 89.00 | 358.40 | 5,857.5 | 4,863.0 | -54.3 | 4,863.3 | 1.20 | 0.67 | -1.00 | |
| 10,572.0 | 89.10 | 357.70 | 5,858.0 | 4,895.0 | -55.4 | 4,895.3 | 2.21 | 0.31 | -2.19 | |
| 10,604.0 | 87.80 | 357.30 | 5,858.9 | 4,926.9 | -56.8 | 4,927.2 | 4.25 | -4.06 | -1.25 | |
| 10,635.0 | 87.90 | 357.10 | 5,860.1 | 4,957.9 | -58.3 | 4,958.2 | 0.72 | 0.32 | -0.65 | |
| 10,667.0 | 88.80 | 357.50 | 5,861.0 | 4,989.8 | -59.8 | 4,990.2 | 3.08 | 2.81 | 1.25 | |
| 10,699.0 | 87.80 | 358.50 | 5,861.9 | 5,021.8 | -60.9 | 5,022.1 | 4.42 | -3.13 | 3.13 | |
| 10,730.0 | 87.80 | 358.50 | 5,863.1 | 5,052.8 | -61.8 | 5,053.1 | 0.00 | 0.00 | 0.00 | |
| 10,762.0 | 88.10 | 358.70 | 5,864.3 | 5,084.7 | -62.5 | 5,085.1 | 1.13 | 0.94 | 0.63 | |
| 10,793.0 | 89.00 | 359.40 | 5,865.1 | 5,115.7 | -63.1 | 5,116.1 | 3.68 | 2.90 | 2.26 | |
| 10,825.0 | 89.20 | 359.40 | 5,865.6 | 5,147.7 | -63.4 | 5,148.1 | 0.63 | 0.63 | 0.00 | |
| 10,857.0 | 88.50 | 0.60 | 5,866.2 | 5,179.7 | -63.4 | 5,180.1 | 4.34 | -2.19 | 3.75 | |
| 10,888.0 | 88.60 | 0.80 | 5,867.0 | 5,210.7 | -63.0 | 5,211.0 | 0.72 | 0.32 | 0.65 | |
| 10,920.0 | 88.40 | 0.10 | 5,867.8 | 5,242.7 | -62.8 | 5,243.0 | 2.27 | -0.63 | -2.19 | |
| 10,952.0 | 88.60 | 0.60 | 5,868.7 | 5,274.7 | -62.6 | 5,275.0 | 1.68 | 0.63 | 1.56 | |
| 10,983.0 | 88.40 | 0.50 | 5,869.5 | 5,305.7 | -62.3 | 5,306.0 | 0.72 | -0.65 | -0.32 | |
| 11,015.0 | 88.40 | 359.90 | 5,870.4 | 5,337.6 | -62.2 | 5,338.0 | 1.87 | 0.00 | -1.88 | |
| 11,047.0 | 88.50 | 359.90 | 5,871.2 | 5,369.6 | -62.2 | 5,370.0 | 0.31 | 0.31 | 0.00 | |
| 11,078.0 | 88.40 | 359.90 | 5,872.1 | 5,400.6 | -62.3 | 5,401.0 | 0.32 | -0.32 | 0.00 | |
| 11,110.0 | 88.00 | 359.90 | 5,873.1 | 5,432.6 | -62.3 | 5,432.9 | 1.25 | -1.25 | 0.00 | |
| 11,142.0 | 87.80 | 359.40 | 5,874.2 | 5,464.6 | -62.5 | 5,464.9 | 1.68 | -0.63 | -1.56 | |
| 11,174.0 | 88.00 | 359.20 | 5,875.4 | 5,496.6 | -62.9 | 5,496.9 | 0.88 | 0.63 | -0.63 | |
| 11,205.0 | 88.50 | 359.20 | 5,876.4 | 5,527.5 | -63.3 | 5,527.9 | 1.61 | 1.61 | 0.00 | |
| 11,237.0 | 89.10 | 359.80 | 5,877.0 | 5,559.5 | -63.6 | 5,559.9 | 2.65 | 1.88 | 1.88 | |
| 11,269.0 | 88.90 | 359.20 | 5,877.6 | 5,591.5 | -63.9 | 5,591.9 | 1.98 | -0.63 | -1.88 | |
| 11,301.0 | 89.10 | 359.80 | 5,878.2 | 5,623.5 | -64.2 | 5,623.9 | 1.98 | 0.63 | 1.88 | |
| 11,332.0 | 88.70 | 0.60 | 5,878.7 | 5,654.5 | -64.1 | 5,654.9 | 2.88 | -1.29 | 2.58 | |
| 11,364.0 | 89.30 | 1.30 | 5,879.3 | 5,686.5 | -63.5 | 5,686.8 | 2.88 | 1.88 | 2.19 | |
| 11,395.0 | 89.30 | 1.30 | 5,879.7 | 5,717.5 | -62.8 | 5,717.8 | 0.00 | 0.00 | 0.00 | |
| 11,427.0 | 90.40 | 1.30 | 5,879.8 | 5,749.5 | -62.1 | 5,749.8 | 3.44 | 3.44 | 0.00 | |
| 11,459.0 | 90.90 | 1.00 | 5,879.4 | 5,781.5 | -61.5 | 5,781.8 | 1.82 | 1.56 | -0.94 | |
| 11,491.0 | 91.40 | 0.80 | 5,878.8 | 5,813.5 | -61.0 | 5,813.8 | 1.68 | 1.56 | -0.63 | |
| 11,522.0 | 91.20 | 0.80 | 5,878.1 | 5,844.5 | -60.5 | 5,844.8 | 0.65 | -0.65 | 0.00 | |
| 11,554.0 | 91.60 | 0.60 | 5,877.3 | 5,876.4 | -60.1 | 5,876.7 | 1.40 | 1.25 | -0.63 | |
| 11,586.0 | 90.30 | 0.30 | 5,876.7 | 5,908.4 | -59.9 | 5,908.7 | 4.17 | -4.06 | -0.94 | |
| 11,618.0 | 88.40 | 0.30 | 5,877.1 | 5,940.4 | -59.7 | 5,940.7 | 5.94 | -5.94 | 0.00 | |
| 11,649.0 | 88.40 | 0.30 | 5,878.0 | 5,971.4 | -59.6 | 5,971.7 | 0.00 | 0.00 | 0.00 | |
| 11,681.0 | 89.10 | 359.90 | 5,878.7 | 6,003.4 | -59.5 | 6,003.7 | 2.52 | 2.19 | -1.25 | |
| 11,713.0 | 89.30 | 359.90 | 5,879.1 | 6,035.4 | -59.6 | 6,035.7 | 0.63 | 0.63 | 0.00 | |
| 11,744.0 | 89.60 | 359.60 | 5,879.4 | 6,066.4 | -59.7 | 6,066.7 | 1.37 | 0.97 | -0.97 | |
| 11,776.0 | 89.90 | 359.90 | 5,879.6 | 6,098.4 | -59.8 | 6,098.7 | 1.33 | 0.94 | 0.94 | |
| 11,808.0 | 90.10 | 359.90 | 5,879.6 | 6,130.4 | -59.9 | 6,130.7 | 0.63 | 0.63 | 0.00 | |
| 11,839.0 | 90.40 | 359.90 | 5,879.4 | 6,161.4 | -59.9 | 6,161.7 | 0.97 | 0.97 | 0.00 | |
| 11,871.0 | 90.40 | 359.80 | 5,879.2 | 6,193.4 | -60.0 | 6,193.7 | 0.31 | 0.00 | -0.31 | |
| 11,903.0 | 90.30 | 359.40 | 5,879.0 | 6,225.4 | -60.2 | 6,225.7 | 1.29 | -0.31 | -1.25 | |
| 11,934.0 | 90.40 | 358.90 | 5,878.8 | 6,256.4 | -60.7 | 6,256.7 | 1.64 | 0.32 | -1.61 | |
| 11,966.0 | 90.10 | 358.40 | 5,878.7 | 6,288.4 | -61.5 | 6,288.7 | 1.82 | -0.94 | -1.56 | |
| 11,998.0 | 90.00 | 358.00 | 5,878.6 | 6,320.4 | -62.5 | 6,320.7 | 1.29 | -0.31 | -1.25 | |
| 12,029.0 | 90.10 | 358.20 | 5,878.6 | 6,351.4 | -63.5 | 6,351.7 | 0.72 | 0.32 | 0.65 | |
| 12,061.0 | 90.60 | 357.80 | 5,878.4 | 6,383.3 | -64.6 | 6,383.7 | 2.00 | 1.56 | -1.25 | |
| 12,093.0 | 90.80 | 357.50 | 5,878.0 | 6,415.3 | -65.9 | 6,415.6 | 1.13 | 0.63 | -0.94 | |
| 12,124.0 | 91.30 | 357.50 | 5,877.5 | 6,446.3 | -67.3 | 6,446.6 | 1.61 | 1.61 | 0.00 | |
| 12,156.0 | 91.50 | 357.10 | 5,876.7 | 6,478.2 | -68.8 | 6,478.6 | 1.40 | 0.63 | -1.25 | |

| Survey | Response |
|--------|----------|
| 1 | 1 |
| 2 | 2 |
| 3 | 3 |
| 4 | 4 |
| 5 | 5 |
| 6 | 6 |
| 7 | 7 |
| 8 | 8 |
| 9 | 9 |
| 10 | 10 |
| 11 | 11 |
| 12 | 12 |
| 13 | 13 |
| 14 | 14 |
| 15 | 15 |
| 16 | 16 |
| 17 | 17 |
| 18 | 18 |
| 19 | 19 |
| 20 | 20 |
| 21 | 21 |
| 22 | 22 |
| 23 | 23 |
| 24 | 24 |
| 25 | 25 |
| 26 | 26 |
| 27 | 27 |
| 28 | 28 |
| 29 | 29 |
| 30 | 30 |
| 31 | 31 |
| 32 | 32 |
| 33 | 33 |
| 34 | 34 |
| 35 | 35 |
| 36 | 36 |
| 37 | 37 |
| 38 | 38 |
| 39 | 39 |
| 40 | 40 |
| 41 | 41 |
| 42 | 42 |
| 43 | 43 |
| 44 | 44 |
| 45 | 45 |
| 46 | 46 |
| 47 | 47 |
| 48 | 48 |
| 49 | 49 |
| 50 | 50 |
| 51 | 51 |
| 52 | 52 |
| 53 | 53 |
| 54 | 54 |
| 55 | 55 |
| 56 | 56 |
| 57 | 57 |
| 58 | 58 |
| 59 | 59 |
| 60 | 60 |
| 61 | 61 |
| 62 | 62 |
| 63 | 63 |
| 64 | 64 |
| 65 | 65 |
| 66 | 66 |
| 67 | 67 |
| 68 | 68 |
| 69 | 69 |
| 70 | 70 |
| 71 | 71 |
| 72 | 72 |
| 73 | 73 |
| 74 | 74 |
| 75 | 75 |
| 76 | 76 |
| 77 | 77 |
| 78 | 78 |
| 79 | 79 |
| 80 | 80 |
| 81 | 81 |
| 82 | 82 |
| 83 | 83 |
| 84 | 84 |
| 85 | 85 |
| 86 | 86 |
| 87 | 87 |
| 88 | 88 |
| 89 | 89 |
| 90 | 90 |
| 91 | 91 |
| 92 | 92 |
| 93 | 93 |
| 94 | 94 |
| 95 | 95 |
| 96 | 96 |
| 97 | 97 |
| 98 | 98 |
| 99 | 99 |
| 100 | 100 |

BHL 1980'FSL, 660'FEL, SEC.11 - HARDLINE BHL 660'

Target Name

Casing Points

Checked By: _____ Approved By: _____ Date: _____