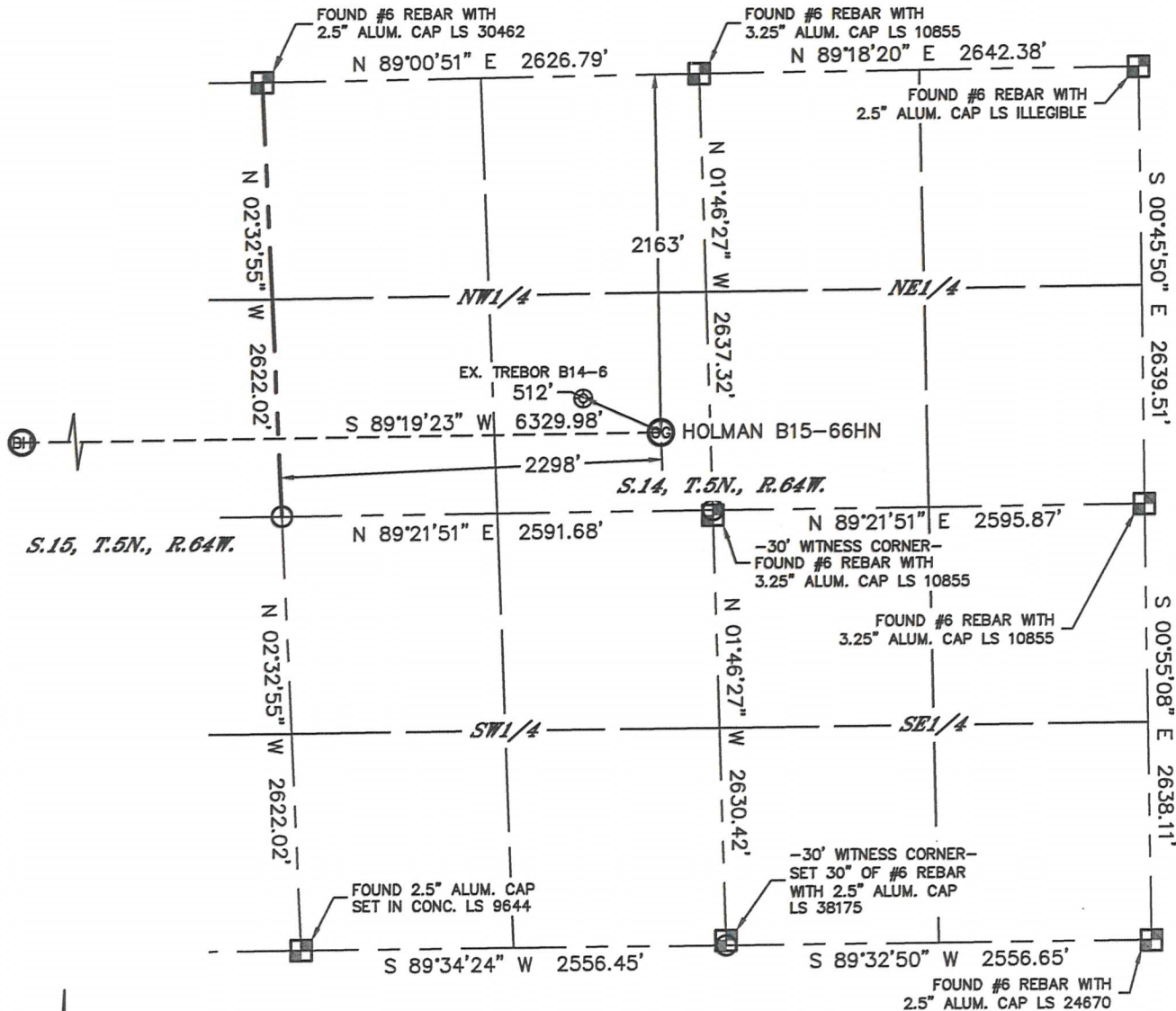


WELL LOCATION CERTIFICATE

SECTION: 14
TOWNSHIP: 5N
RANGE: 64W

THIS MAP DOES NOT REPRESENT A BOUNDARY SURVEY



In accordance with a request from Jacob Rice with Noble Energy Inc., Lat40°, Inc. has determined the surface location of the HOLMAN B15-66HN to be 2163' from the NORTH line and 2298' from the WEST line as measured at right angles from the section lines of Section 14, Township 5 North, Range 64 West and the bottom hole to be 2190' from the NORTH line and 1190' from the WEST line as measured at right angles from the section lines of Section 15, Township 5 North, Range 64 West of the Sixth Principal Meridian, County of Weld, State of Colorado.

I hereby state that this Well Location Certificate was prepared by me, or under my direct supervision, that the fieldwork was completed on 5/14/2012, for and on behalf of Noble Energy Inc. That this is not a Land Survey Plat or an Improvement Survey Plat, and that it is not to be relied upon for establishment of fence, building, or other future improvement lines.

NOTE:

- 1) Bearings shown are Grid Bearings of the Colorado State Plane Coordinate System, North Zone, North American Datum 1983/2007. The lineal dimensions as contained herein are based upon the "U.S. Survey Foot."
- 2) Ground elevations are based on an observed GPS elevation (NAVD 1988 DATUM).
- 3) NEAREST EXISTING WELL: TREBOR B14-6, 512'
- 4) IMPROVEMENTS: See LOCATION DRAWING for all visible improvements within 400' of disturbed area.
- 5) SURFACE USE: CROP LAND
- 6) INSTRUMENT OPERATOR: ADAM KELLY

SURFACE LOCATION

LAT: 40.40056°N
LONG: 104.51854°W
PDOP: 1.9
ELEV: 4584'
1/4, 1/4: SE1/4NW1/4
NEAREST PROPERTY LINE: 299' EAST

BOTTOM HOLE

LAT: 40.40055°N
LONG: 104.54126°W

NOTE

According to Colorado law, you must commence any legal action based upon any defect in this W.L.C. within three years after you discover such defect. In no event, may any action based upon any defect in this survey be commenced more than ten years after the date of the certificate shown hereon. (13-80-105 C.R.S.)

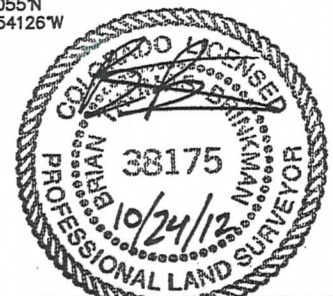
LEGEND

- = ALIQUOT MONUMENT AS DESCRIBED
- = CALCULATED POSITION

SHEET 1 OF 2

Brian T. Brinkman—On behalf of Lat40°, Inc.
Colorado Licensed Professional
Land Surveyor No. 38175

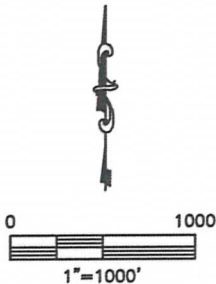
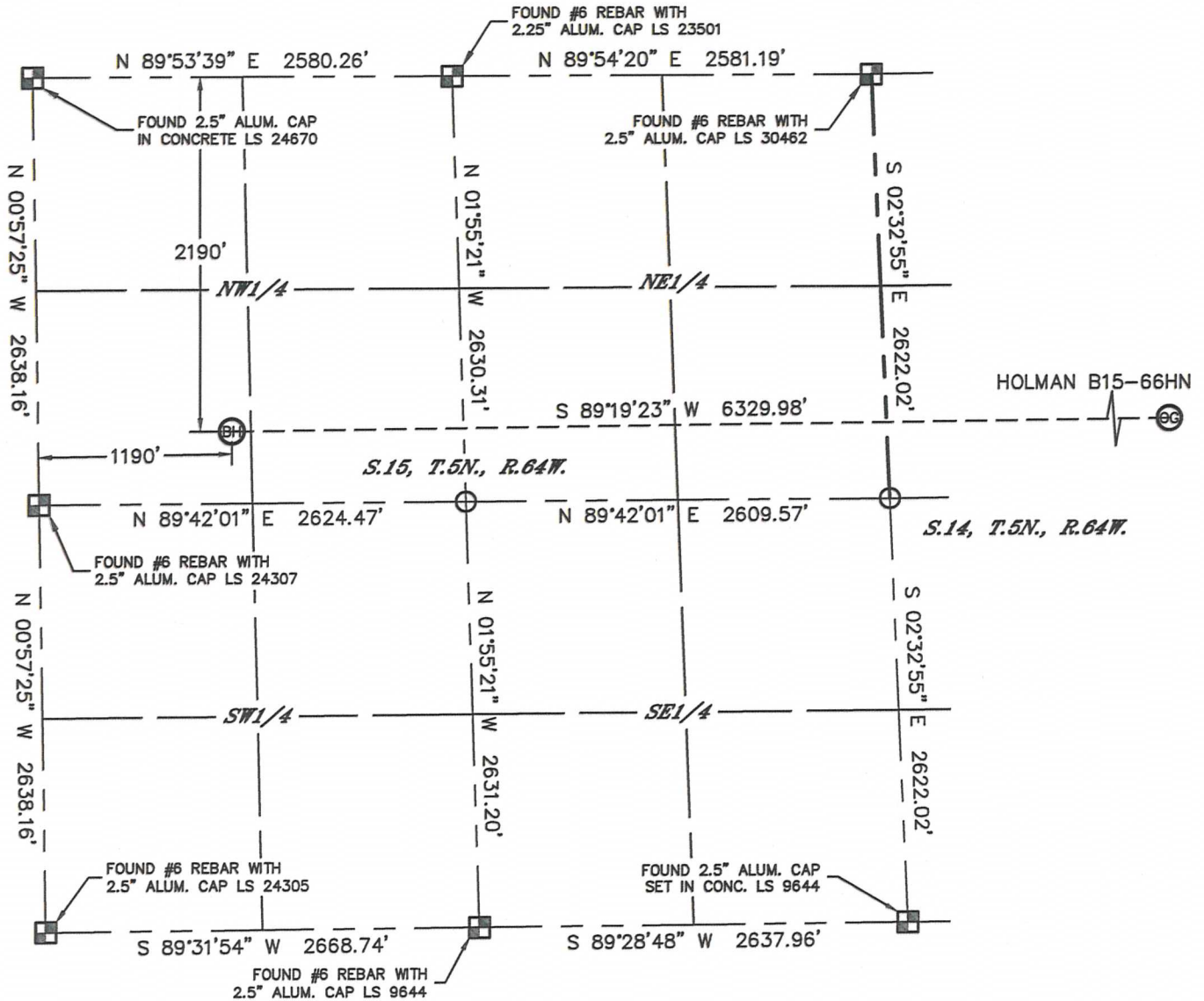
DATE: rev10/24/2012
PROJECT#: 2012029



WELL LOCATION CERTIFICATE

THIS MAP DOES NOT REPRESENT A BOUNDARY SURVEY

SECTION: 14
TOWNSHIP: 5N
RANGE: 64W



NOTE
According to Colorado law, you must commence any legal action based upon any defect in this W.L.C. within three years after you discover such defect. In no event, may any action based upon any defect in this survey be commenced more than ten years after the date of the certificate shown hereon. (13-80-105 C.R.S.)

LEGEND
 = ALIQUOT MONUMENT AS DESCRIBED
 = CALCULATED POSITION

SHEET 2 OF 2

Brian T. Brinkman—On behalf of Lat40°, Inc.
Colorado Licensed Professional Land Surveyor No. 38175

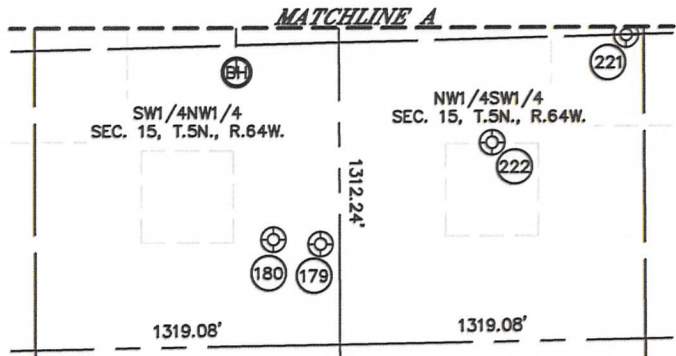
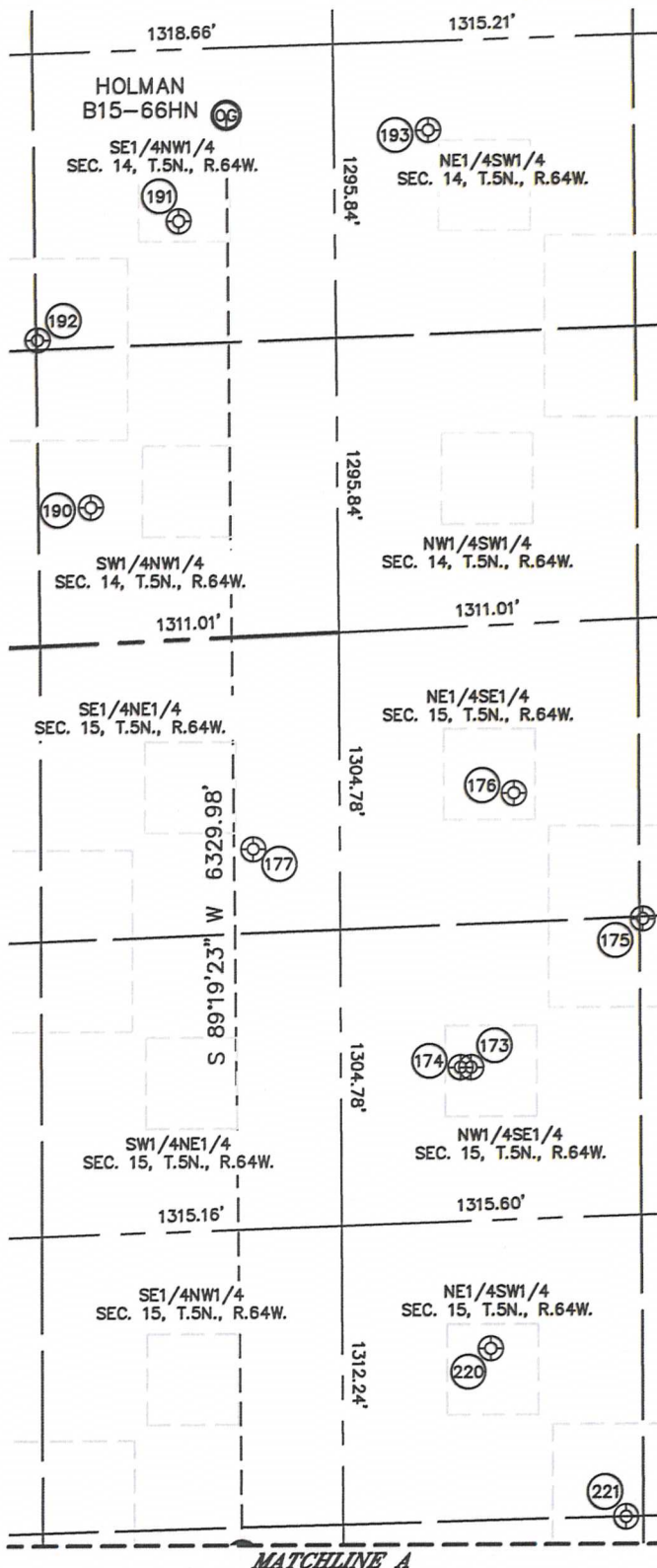
DATE: rev10/24/2012
PROJECT#: 2012029



SITE SKETCH

HOLMAN B15-66HN

SECTION: 14
TOWNSHIP: 5N
RANGE: 64W



- (173) LOUSTALET B15-10
NW1/4SE1/4
2057' FSL
1940' FEL
LAT-40.39773°N
LONG-104.53363°W
PDOP:1.4
ELEV:4574'

(174) GLOVER-USX B15-02CD
NW1/4SE1/4
2104' FSL
1938' FEL
LAT-40.39786°N
LONG-104.53363°W
PDOP:1.1
ELEV:4575'

(175) LOUSTALET B15-23
SW1/4SE1/4
1300' FSL
1321' FEL
LAT-40.39565°N
LONG-104.53132°W
PDOP:3.5
ELEV:4574'

(176) LOUSTALET B15-09
NE1/4SE1/4
1860' FSL
741' FEL
LAT-40.39718°N
LONG-104.52931°W
PDOP:1.3
ELEV:4572'

(177) LOUSTALET 42-15
SE1/4NE1/4
2242' FNL
933' FEL
LAT-40.40032°N
LONG-104.53013°W
PDOP:2.3
ELEV:4574'

(179) FRENZEL B15-6
SW1/4NW1/4
2554' FNL
437' FWL
LAT-40.39957°N
LONG-104.54395°W
PDOP:1.6
ELEV:4578'

(180) FRENZEL B15-5
SW1/4NW1/4
2349' FNL
460' FWL
LAT-40.40013°N
LONG-104.54388°W
PDOP:1.8
ELEV:4578'

(190) TREBOR B14-5
SW1/4NW1/4
1543' FNL
602' FWL
LAT-40.40223°N
LONG-104.52470°W
PDOP:1.6
ELEV:4585'

(191) TREBOR B14-6
SE1/4NW1/4
1948' FNL
1840' FWL
LAT-40.40114°N
LONG-104.52021°W
PDOP:1.1
ELEV:4585'

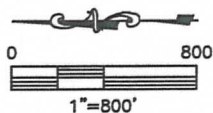
(192) TREBOR B14-19
SE1/4NW1/4
1320' FNL
1345' FWL
LAT-40.40286°N
LONG-104.52206°W
PDOP:1.9
ELEV:4587'

(193) FOOS 23-14
NE1/4SW1/4
2216' FSL
2191' FWL
LAT-40.39813°N
LONG-104.51882°W
PDOP:1.9
ELEV:4582'

(220) LOUSTALET B15-11
NE1/4SW1/4
1981' FSL
2072' FWL
LAT-40.39753°N
LONG-104.53807°W
PDOP:1.5
ELEV:4576

(221) FRENZEL B15-25
NW1/4SW1/4
1393' FSL
1321' FWL
LAT-40.39592°N
LONG-104.54075°W
PDOP:1.8
ELEV:4577

(222) LOUSTALET 15-1
NW1/4SW1/4
1976' FSL
865' FWL
LAT-40.39752°N
LONG-104.54240°W
PDOP:1.8
ELEV:4579



DATE: rev10/24/2012
PROJECT#: 2012029