

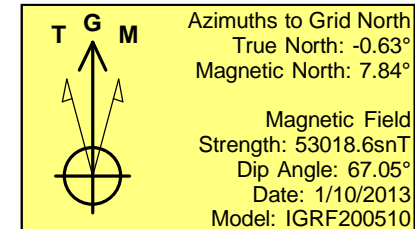
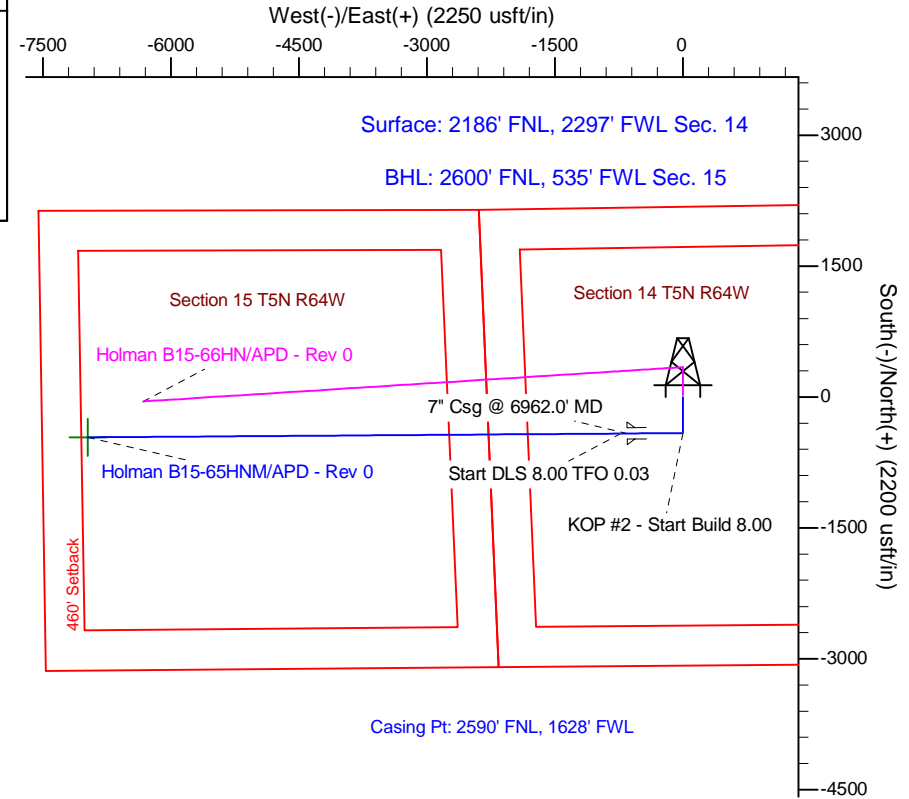
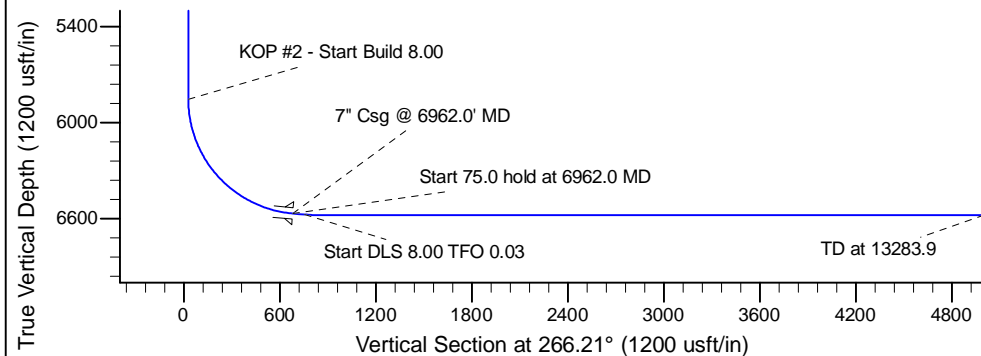
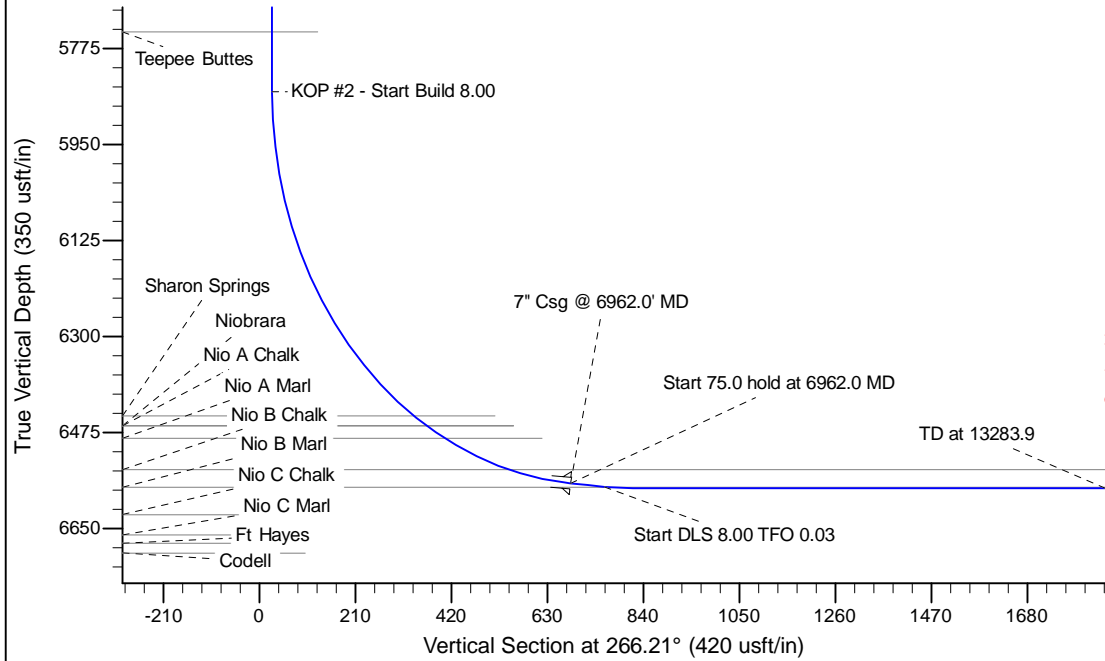
Project: Wattenberg Field
Site: B (Sec.14-T05N-R64W) Weld County, CO
Well: Holman B15-65HNM
Wellbore: Original Drilling
Design: APD - Rev 0

Northern Region Drilling

Geodetic System: US State Plane 1983
Datum: North American Datum 1983
Ellipsoid: GRS 1980
Zone: Colorado Northern Zone
System Datum: Mean Sea Level

SECTION DETAILS

Sec	MD	Inc	Azi	TVD	+N/-S	+E/-W	Dleg	TFace	VSect	Target
1	0.0	0.00	0.00	0.0	0.0	0.0	0.00	0.00	0.0	
2	2000.0	0.00	0.00	2000.0	0.0	0.0	0.00	0.00	0.0	
3	2560.1	14.00	180.00	2554.6	-68.1	0.0	2.50	180.00	4.5	
4	3708.1	14.00	180.00	3668.4	-345.9	0.0	0.00	0.00	22.9	
5	4268.2	0.00	0.00	4223.0	-414.0	0.0	2.50	180.00	27.4	
6	5899.5	0.00	0.00	5854.3	-414.0	0.0	0.00	0.00	27.4	
7	6962.0	85.00	269.60	6567.7	-418.6	-653.8	8.00	269.60	680.0	
8	7037.0	85.00	269.60	6574.3	-419.1	-728.5	0.00	0.00	754.6	
9	7099.5	90.00	269.60	6577.0	-419.5	-790.9	8.00	0.03	816.9	
10	13283.9	90.00	269.60	6577.0	-462.4	-6975.1	0.00	0.00	6990.4	Holman B15-65HNM BHL 2600' FNL 535' FWL



WELL DETAILS: Holman B15-65HNM			
Ground Level:	4584.0	Latitude	40.400500
Northing	1390255.21	Longitude	-104.518540
Easting	3273339.18		
Plan: APD - Rev 0 (Holman B15-65HNM/Original Drilling)			
Created By:	Carrie Willers	Date:	17:46, January 31 2013
Checked:		Date:	
Reviewed:		Date:	
Approved:		Date:	