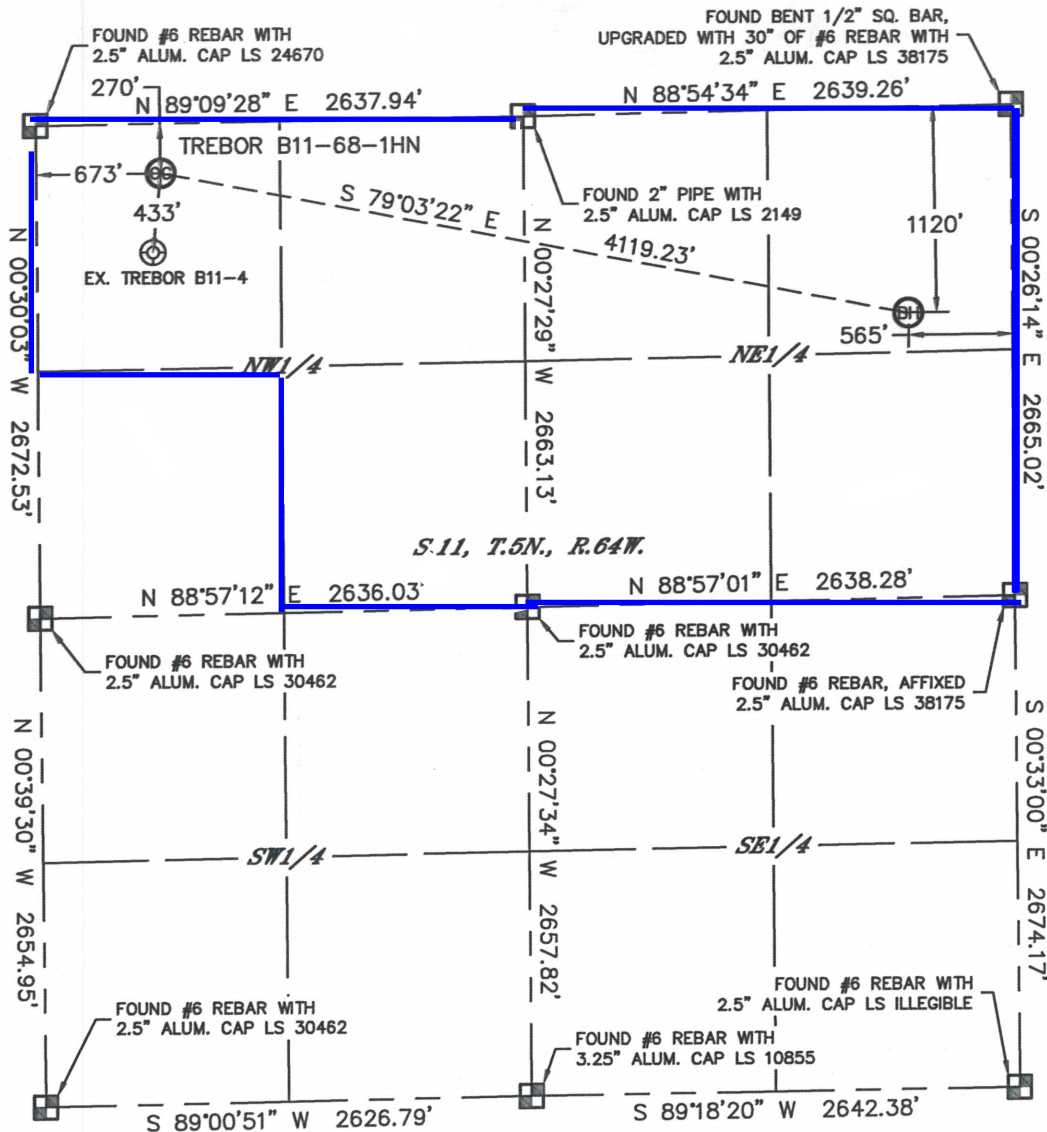


# WELL LOCATION CERTIFICATE

SECTION: 11  
TOWNSHIP: 5N  
RANGE: 64W

THIS MAP DOES NOT REPRESENT A BOUNDARY SURVEY



In accordance with a request from Mike Rodine with Noble Energy Inc. Lat40°, Inc. has determined the surface location of the TREBOR B11-68-1HN to be 270' from the NORTH line and 673' from the WEST line and the bottom hole to be 1120' from the NORTH line and 565' from the EAST line as measured at right angles from the section lines of Section 11, Township 5 North, Range 64 West of the Sixth Principal Meridian, County of Weld, State of Colorado.

I hereby state that this Well Location Certificate was prepared by me, or under my direct supervision, that the fieldwork was completed on 10/4/2012, for and on behalf of Noble Energy Inc. That this is not a Land Survey Plat or an Improvement Survey Plat, and that it is not to be relied upon for establishment of fence, building, or other future improvement lines.

**NOTE:**

- 1) Bearings shown are Grid Bearings of the Colorado State Plane Coordinate System, North Zone, North American Datum 1983/2007. The lineal dimensions as contained herein are based upon the "U.S. Survey Foot."
- 2) Ground elevations are based on an observed GPS elevation (NAVD 1988 DATUM).
- 3) NEAREST EXISTING WELL: TREBOR B11-4, 433'
- 4) IMPROVEMENTS: See LOCATION DRAWING for all visible improvements within 400' of disturbed area.
- 5) SURFACE USE: CROP LAND
- 6) INSTRUMENT OPERATOR: WYATT HALL

**SURFACE LOCATION**

LAT: 40.42034°N  
LONG: 104.52462°W  
PDOP: 1.2  
ELEV: 4606'  
1/4, 1/4: NW1/4NW1/4  
NEAREST PROPERTY LINE: 122' WEST

**BOTTOM HOLE**

LAT: 40.41807°N  
LONG: 104.51013°W

**NOTE**

According to Colorado law, you must commence any legal action based upon any defect in this W.L.C. within three years after you discover such defect. In no event, may any action based upon any defect in this survey be commenced more than ten years after the date of the certificate shown hereon. (13-80-105 C.R.S.)

**LEGEND**

- = ALIQUOT MONUMENT AS DESCRIBED
- = CALCULATED POSITION

Brian T. Brinkman—On behalf of Lat40°, Inc.  
Colorado Licensed Professional  
Land Surveyor No. 38175

DATE: rev11/02/2012  
PROJECT#: 2012029

