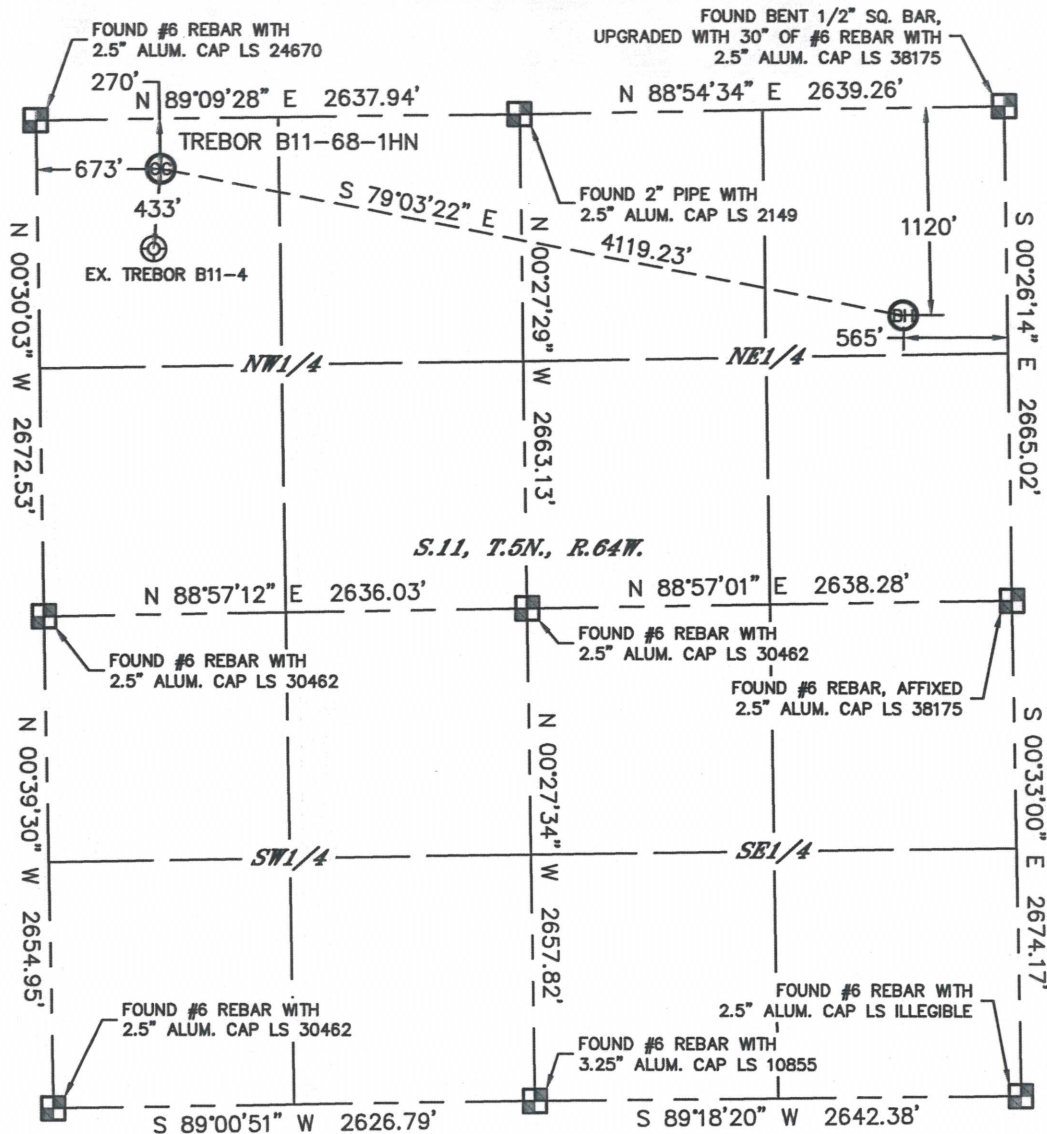


WELL LOCATION CERTIFICATE

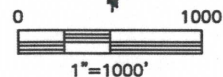
THIS MAP DOES NOT REPRESENT A BOUNDARY SURVEY

SECTION: 11
TOWNSHIP: 5N
RANGE: 64W



In accordance with a request from Mike Rodine with Noble Energy Inc., Lat40°, Inc. has determined the surface location of the TREBOR B11-68-1HN to be 270' from the NORTH line and 673' from the WEST line and the bottom hole to be 1120' from the NORTH line and 565' from the EAST line as measured at right angles from the section lines of Section 11, Township 5 North, Range 64 West of the Sixth Principal Meridian, County of Weld, State of Colorado.

I hereby state that this Well Location Certificate was prepared by me, or under my direct supervision, that the fieldwork was completed on 10/4/2012, for and on behalf of Noble Energy Inc. That this is not a Land Survey Plat or an Improvement Survey Plat, and that it is not to be relied upon for establishment of fence, building, or other future improvement lines.



NOTE:

- 1) Bearings shown are Grid Bearings of the Colorado State Plane Coordinate System, North Zone, North American Datum 1983/2007. The lineal dimensions as contained herein are based upon the "U.S. Survey Foot."
- 2) Ground elevations are based on an observed GPS elevation (NAVD 1988 DATUM).
- 3) NEAREST EXISTING WELL: TREBOR B11-4, 433'
- 4) IMPROVEMENTS: See LOCATION DRAWING for all visible improvements within 400' of disturbed area.
- 5) SURFACE USE: CROP LAND
- 6) INSTRUMENT OPERATOR: WYATT HALL

NOTE:

According to Colorado law, you must commence any legal action based upon any defect in this W.L.C. within three years after you discover such defect. In no event, may any action based upon any defect in this survey be commenced more than ten years after the date of the certificate shown hereon. (13-80-105 C.R.S.)

LEGEND

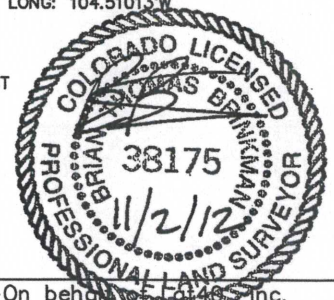
- = ALIQUOT MONUMENT AS DESCRIBED
- = CALCULATED POSITION

SURFACE LOCATION

LAT: 40.42034°N
LONG: 104.52462°W
PDOP: 1.2
ELEV: 4606'
1/4, 1/4: NW1/4, NW1/4
NEAREST PROPERTY LINE: 122' WEST

BOTTOM HOLE

LAT: 40.41807°N
LONG: 104.51013°W



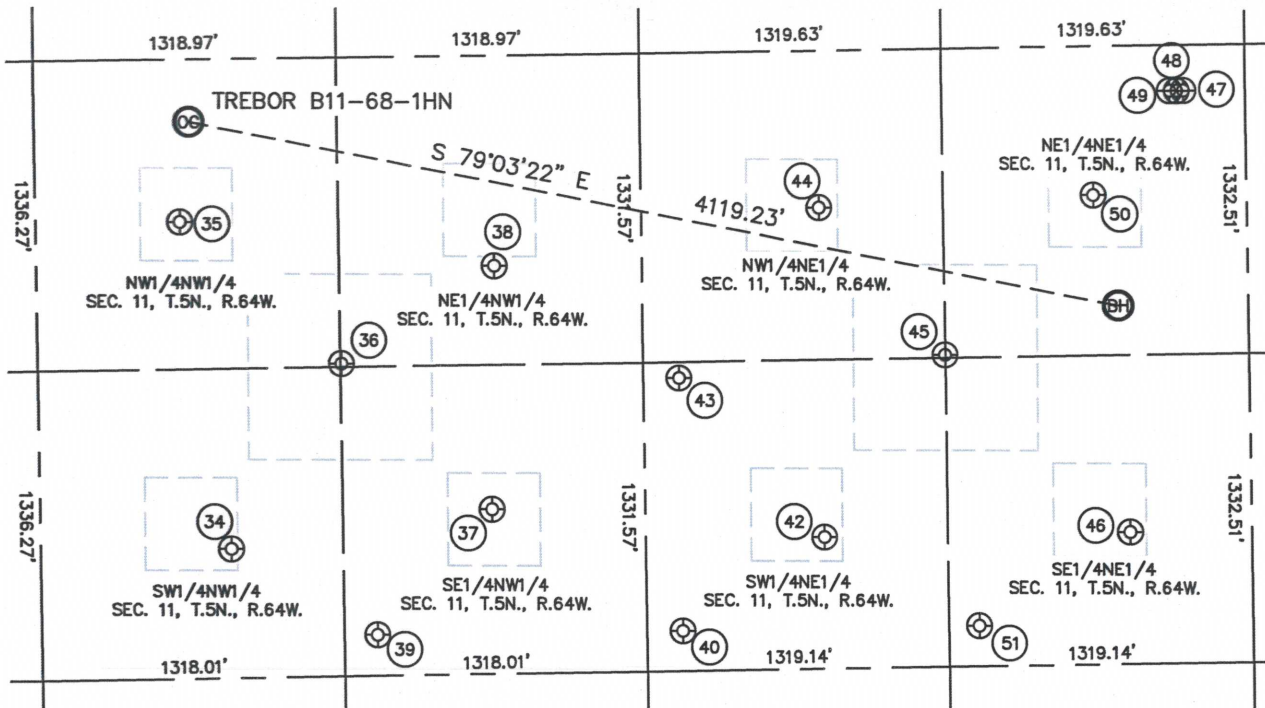
Brian T. Brinkman—On behalf of Lat40°, Inc.
Colorado Licensed Professional
Land Surveyor No. 38175

DATE: rev11/02/2012
PROJECT#: 2012029

SITE SKETCH

TREBOR B11-68-1HN

SECTION: 11
TOWNSHIP: 5N
RANGE: 64W



34

TREBOR B11-5
SW1/4NW1/4
2112' FNL
831' FWL
LAT-40.41529N
LONG-104.52407W
PDOP: 1.2
ELEV: 4602'

35

TREBOR B11-4
NW1/4NW1/4
700' FNL
628' FWL
LAT-40.41916N
LONG-104.52478W
PDOP: 2.3
ELEV: 4608'

36

TREBOR B11-19
NE1/4NW1/4
1319' FNL
1321' FWL
LAT-40.41747N
LONG-104.52230W
PDOP: 1.2
ELEV: 4602'

37

TREBOR B11-6
SE1/4NW1/4
1955' FNL
1970' FWL
LAT-40.41573N
LONG-104.51998W
PDOP: 1.1
ELEV: 4602'

38

TREBOR B11-3
NE1/4NW1/4
907' FNL
1994' FWL
LAT-40.41861N
LONG-104.51988W
PDOP: 1.2
ELEV: 4605'

39

TREBOR B11-20
SE1/4NW1/4
2490' FNL
1462' FWL
LAT-40.41426N
LONG-104.52180W
PDOP: 1.2
ELEV: 4599'

40

TREBOR B11-21
SW1/4NE1/4
2490' FNL
2483' FEL
LAT-40.41427N
LONG-104.51703W
PDOP: 1.1
ELEV: 4598'

42

TREBOR B11-7
SW1/4NE1/4
2096' FNL
1858' FEL
LAT-40.41537N
LONG-104.51478W
PDOP: 1.2
ELEV: 4601'

43

TREBOR B11-18
SW1/4NE1/4
1401' FNL
2484' FEL
LAT-40.41726N
LONG-104.51702W
PDOP: 1.2
ELEV: 4602'

44

TREBOR B11-2
NW1/4NE1/4
677' FNL
1862' FEL
LAT-40.41926N
LONG-104.51478W
PDOP: 1.6
ELEV: 4605'

45

TREBOR B11-17
NW1/4NE1/4
1320' FNL
1320' FEL
LAT-40.41751N
LONG-104.51284W
PDOP: 1.1
ELEV: 4603'

46

TREBOR B11-8
SE1/4NE1/4
2096' FNL
528' FEL
LAT-40.41540N
LONG-104.51001W
PDOP: 1.1
ELEV: 4604'

47

WACKER B12-69HN
NE1/4NE1/4
198' FNL
271' FEL
LAT-40.42061N
LONG-104.50906W
PDOP: 1.4
ELEV: 4598'

48

WACKER B1-79HN
NE1/4NE1/4
199' FNL
300' FEL
LAT-40.42061N
LONG-104.50917W
PDOP: 1.4
ELEV: 4598'

49

WACKER B11-69HN
NE1/4NE1/4
199' FNL
330' FEL
LAT-40.42061N
LONG-104.50927W
PDOP: 1.9
ELEV: 4598'

50

TREBOR B11-1
NE1/4NE1/4
643' FNL
665' FEL
LAT-40.41938N
LONG-104.51048W
PDOP: 1.6
ELEV: 4596'

51

TREBOR B11-22
SE1/4NE1/4
2489' FNL
1188' FEL
LAT-40.41430N
LONG-104.51238W
PDOP: 1.2
ELEV: 4600'

