

HALLIBURTON

WPX ENERGY ROCKY MOUNTAIN LLC-EBUS

**GM 441-12
GRAND VALLEY
Garfield County , Colorado**

Cement Surface Casing

21-Nov-2012

Post Job Report

The Road to Excellence Starts with Safety

Sold To #: 300721	Ship To #: 2964880	Quote #:	Sales Order #: 9732703
Customer: WPX ENERGY ROCKY MOUNTAIN LLC-EBUS		Customer Rep: Duniho, Al	
Well Name: GM		Well #: 441-12	API/UWI #: 05-045-21682
Field: GRAND VALLEY	City (SAP): PARACHUTE	County/Parish: Garfield	State: Colorado
Lat: N 39.461 deg. OR N 39 deg. 27 min. 41.281 secs.		Long: W 108.052 deg. OR W -109 deg. 56 min. 53.837 secs.	
Contractor: CYCLONE 17		Rig/Platform Name/Num: CYCLONE 17	
Job Purpose: Cement Surface Casing			
Well Type: Development Well		Job Type: Cement Surface Casing	
Sales Person: MAYO, MARK		Srvc Supervisor: ARNOLD, EDWARD	MBU ID Emp #: 439784

Job Personnel

HES Emp Name	Exp Hrs	Emp #	HES Emp Name	Exp Hrs	Emp #	HES Emp Name	Exp Hrs	Emp #
ARNOLD, EDWARD John	10.5	439784	DOUT, JACOB J	10.5	430298	SINCLAIR, DAN J	10.5	338784
WALPOLE, DARREN Livingston	10.5	485294						

Equipment

HES Unit #	Distance-1 way	HES Unit #	Distance-1 way	HES Unit #	Distance-1 way	HES Unit #	Distance-1 way
10713212	60 mile	10744549	60 mile	10871245	60 mile	11259882	60 mile
11360871	60 mile	11360883	60 mile	11808831	60 mile		

Job Hours

Date	On Location Hours	Operating Hours	Date	On Location Hours	Operating Hours	Date	On Location Hours	Operating Hours
11-20-2012	7	0	11-21-2012	3.5	3.5			

TOTAL Total is the sum of each column separately

Job				Job Times			
Formation Name				Date	Time	Time Zone	
Formation Depth (MD)	Top	Bottom		Called Out	20 - Nov - 2012	14:30	MST
Form Type	BHST			On Location	20 - Nov - 2012	17:00	MST
Job depth MD	1370. ft	Job Depth TVD	1370. ft	Job Started	21 - Nov - 2012	01:08	MST
Water Depth	Wk Ht Above Floor			Job Completed	21 - Nov - 2012	02:14	MST
Perforation Depth (MD)	From	To		Departed Loc	21 - Nov - 2012	03:30	MST

Well Data

Description	New / Used	Max pressure psig	Size in	ID in	Weight lbm/ft	Thread	Grade	Top MD ft	Bottom MD ft	Top TVD ft	Bottom TVD ft
-------------	------------	-------------------	---------	-------	---------------	--------	-------	-----------	--------------	------------	---------------

Sales/Rental/3rd Party (HES)

Description	Qty	Qty uom	Depth	Supplier
PLUG,CMTG,TOP,9 5/8,HWE,8.16 MIN/9.06 MA	1	EA		

Tools and Accessories

Type	Size	Qty	Make	Depth	Type	Size	Qty	Make	Depth	Type	Size	Qty	Make
Guide Shoe					Packer					Top Plug	9.625	1	HES
Float Shoe					Bridge Plug					Bottom Plug			
Float Collar					Retainer					SSR plug set			
Insert Float										Plug Container	9.625	1	HES
Stage Tool										Centralizers			

Miscellaneous Materials

Gelling Agt	Conc	Surfactant	Conc	Acid Type	Qty	Conc	%
Treatment Fld	Conc	Inhibitor	Conc	Sand Type	Size	Qty	

Fluid Data

Stage/Plug #: 1									
Fluid #	Stage Type	Fluid Name	Qty	Qty uom	Mixing Density lbm/gal	Yield ft ³ /sk	Mix Fluid Gal/sk	Rate bbl/min	Total Mix Fluid Gal/sk

HALLIBURTON**Cementing Job Summary**

Stage/Plug #: 1									
Fluid #	Stage Type	Fluid Name	Qty	Qty uom	Mixing Density lbm/gal	Yield ft ³ /sk	Mix Fluid Gal/sk	Rate bbl/min	Total Mix Fluid Gal/sk
1	Fresh Water Spacer		20.00	bbl	.	.0	.0	4	
2	VersaCem Lead Cement	VERSACEM (TM) SYSTEM (452010)	185.0	sacks	12.3	2.38	13.75	5	13.75
	13.75 Gal	FRESH WATER							
3	VersaCem Tail Cement	VERSACEM (TM) SYSTEM (452010)	160.0	sacks	12.8	2.11	11.75	5	11.75
	11.75 Gal	FRESH WATER							
4	Fresh Water Displacement		103.00	bbl	.	.0	.0	9	
Calculated Values		Pressures		Volumes					
Displacement	103	Shut In: Instant		Lost Returns		Cement Slurry	138.5	Pad	
Top Of Cement	SURFACE	5 Min		Cement Returns	30	Actual Displacement	103	Treatment	
Frac Gradient		15 Min		Spacers	20	Load and Breakdown		Total Job	261.5
Rates									
Circulating	RIG	Mixing	5	Displacement	9	Avg. Job	7		
Cement Left In Pipe	Amount	47 ft	Reason	Shoe Joint					
Frac Ring # 1 @	ID	Frac ring # 2 @	ID	Frac Ring # 3 @	ID	Frac Ring # 4 @	ID		
The Information Stated Herein Is Correct				Customer Representative Signature					

The Road to Excellence Starts with Safety

Sold To #: 300721	Ship To #: 2964880	Quote #:	Sales Order #: 9732703
Customer: WPX ENERGY ROCKY MOUNTAIN LLC-EBUS	Customer Rep: Duniho, Al		
Well Name: GM	Well #: 441-12	API/UWI #: 05-045-21682	
Field: GRAND VALLEY	City (SAP): PARACHUTE	County/Parish: Garfield	State: Colorado
Legal Description:			
Lat: N 39.461 deg. OR N 39 deg. 27 min. 41.281 secs.		Long: W 108.052 deg. OR W -109 deg. 56 min. 53.837 secs.	
Contractor: CYCLONE 17	Rig/Platform Name/Num: CYCLONE 17		
Job Purpose: Cement Surface Casing			Ticket Amount:
Well Type: Development Well	Job Type: Cement Surface Casing		
Sales Person: MAYO, MARK	Srvc Supervisor: ARNOLD, EDWARD	MBU ID Emp #: 439784	

Activity Description	Date/Time	Cht #	Rate bbl/min	Volume bbl		Pressure psig		Comments
				Stage	Total	Tubing	Casing	
Call Out	11/20/2012 14:30							Crew called out for job.
Pre-Convoy Safety Meeting	11/20/2012 15:45							Including entire cement crew. Discuss safety rules, possible hazards, Convoy order.
Crew Leave Yard	11/20/2012 16:00							
Arrive At Loc	11/20/2012 17:00							Rig still running in hole with casing.
Assessment Of Location Safety Meeting	11/21/2012 00:05							Including entire cement crew, find and discuss possible hazards. Water: PH 7; KCL 450; SO4 <200; FE 0; Chlorides 0; Calcium 150; Temp 40; TDS 180.
Pre-Rig Up Safety Meeting	11/21/2012 00:10							1 Elite # 8; 1 660 Bulk truck; 1 hard line to floor; 1 line to rig tank; 1 line to upright; 9 5/8" compact cement head.
Rig-Up Equipment	11/21/2012 00:15							
Rig-Up Completed	11/21/2012 00:40							
Pre-Job Safety Meeting	11/21/2012 00:45							
Start Job	11/21/2012 01:08							TD 1370; TP 1357.18; SJ 47.97; OH 13.5; Mud 10 ppg; 9 5/8" casing 32.3# H-40.
Pump Water	11/21/2012 01:09		2	2			59.0	2 BBL's fresh water to fill lines.
Test Lines	11/21/2012 01:11					4149.0		Tested to 4149 psi, found no leaks.

Sold To #: 300721

Ship To #: 2964880

Quote #:

Sales Order #: 9732703

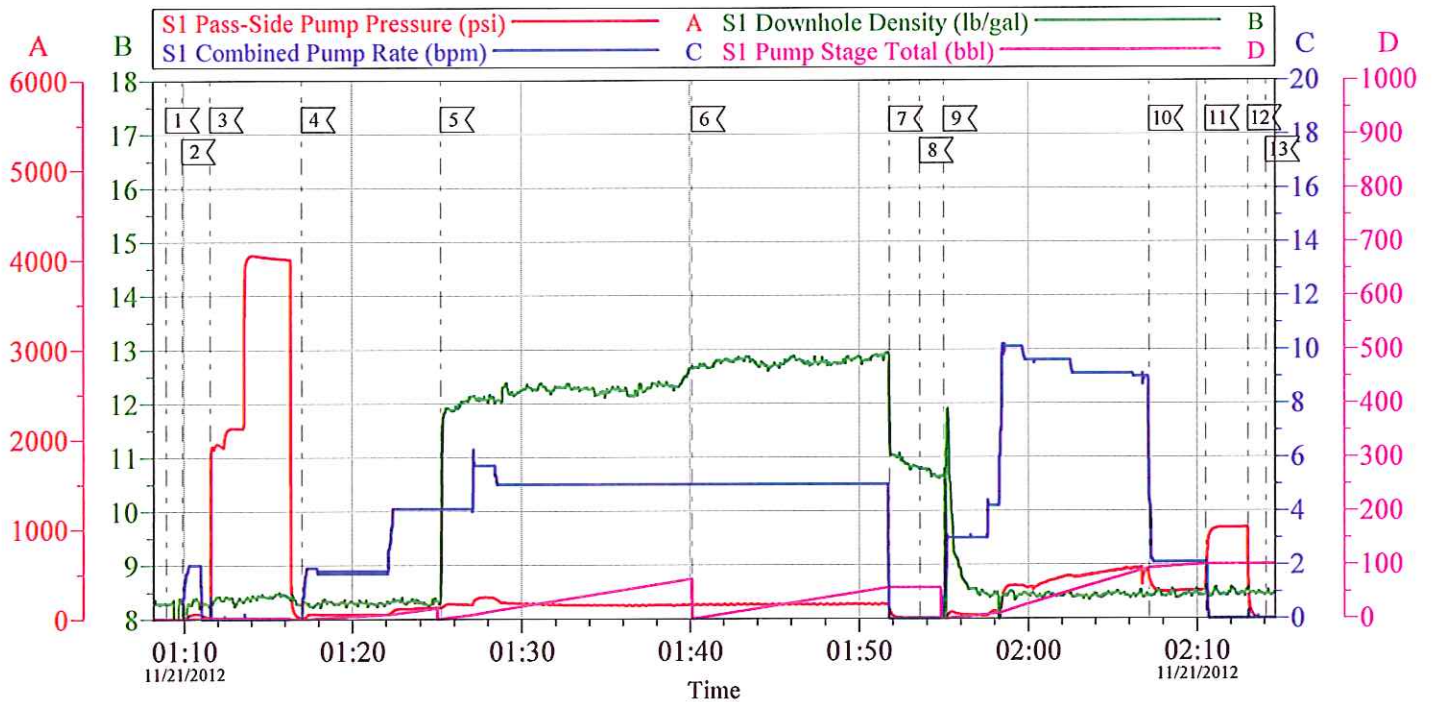
SUMMIT Version: 7.3.0045

Monday, December 03, 2012 03:10:00

Cementing Job Log

Activity Description	Date/Time	Cht #	Rate bbl/min	Volume bbl		Pressure psig		Comments
				Stage	Total	Tubing	Casing	
Pump Spacer 1	11/21/2012 01:17		4	20			118.0	Fresah Water Spacer.
Pump Lead Cement	11/21/2012 01:25		5	78.4			157.0	185 sks Lead Cement, 12.3 ppg; 2.38 yeild; 13.75 gal/sk.
Pump Tail Cement	11/21/2012 01:40		8	60.1			160.0	160 sks Tail Cement, 12.8 ppg; 2.11 yeild; 11.75 gal/sk.
Shutdown	11/21/2012 01:51							
Drop Plug	11/21/2012 01:53							Plug left container.
Pump Displacement	11/21/2012 01:55		10	93			421.0	Fresh water displacement.
Slow Rate	11/21/2012 02:07		2	10			313.0	Slow rate last 10 BBL's prior to bumping the plug.
Bump Plug	11/21/2012 02:10				103		1011.0	Bumped Plug.
Check Floats	11/21/2012 02:13							Floats held. 3/4 BBL's back. 30 BBL's good cement to surface.
End Job	11/21/2012 02:14							
Pre-Rig Down Safety Meeting	11/21/2012 02:20							Including entire cement crew, discuss hazards.
Rig-Down Equipment	11/21/2012 02:25							
Rig-Down Completed	11/21/2012 03:10							
Pre-Convoy Safety Meeting	11/21/2012 03:15							Including entire cement crew, discuss rout back, and stops along the way.
Crew Leave Location	11/21/2012 03:30							
Other	11/21/2012 03:30							Thank You for using Halliburton Cement, Ed Arnold and crew.

WPX - GM 441-12 9 5/8" SURFACE

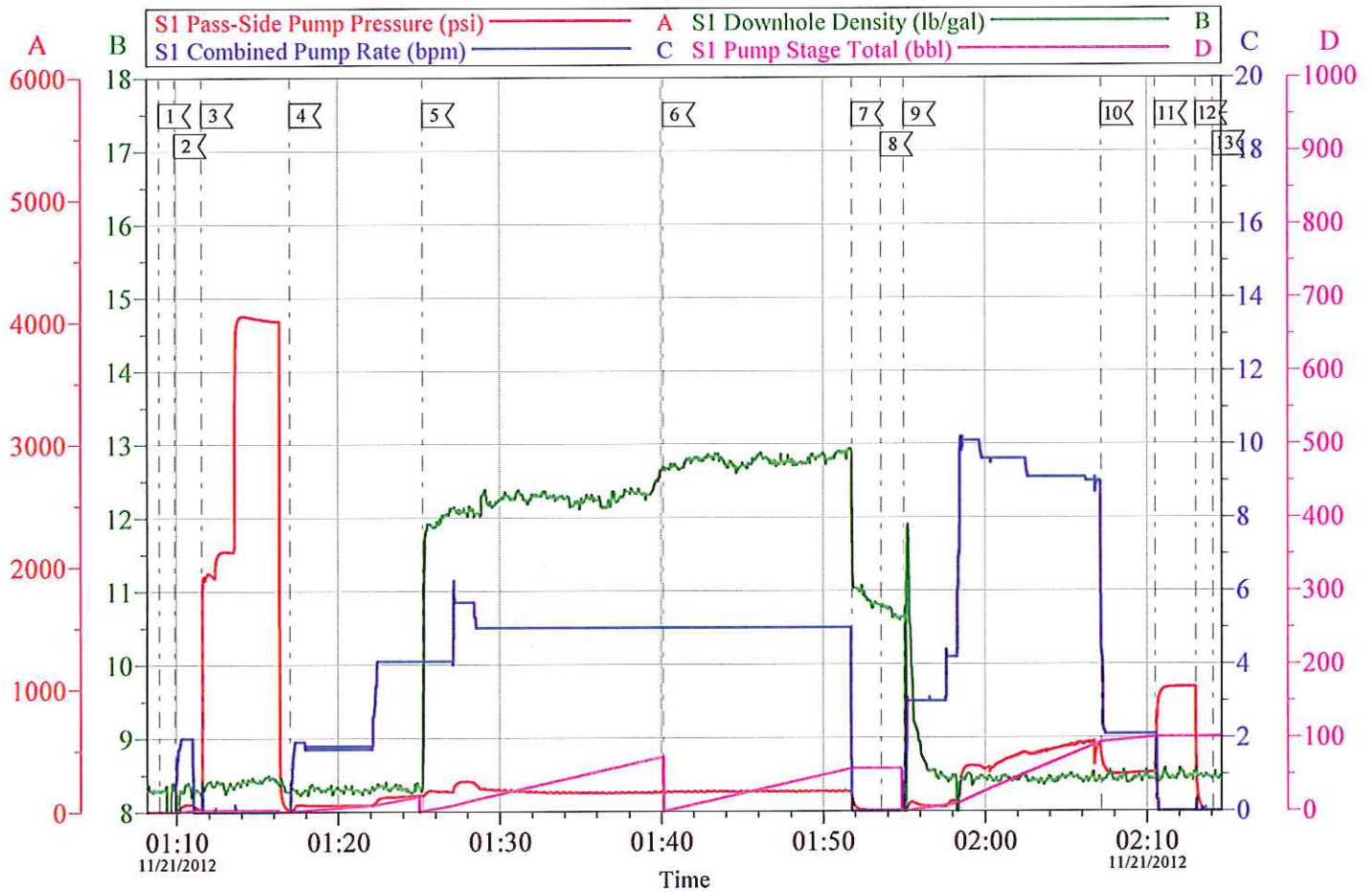


Local Event Log			
1 START JOB	01:08:56	2 FILL LINES	01:09:53
3 TEST LINES	01:11:34	4 H2O SPACER	01:17:01
5 LEAD CEMENT	01:25:14	6 TAIL CEMENT	01:40:07
7 SHUT DOWN	01:51:48	8 DROP PLUG	01:53:36
9 H2O DISPLACEMENT	01:55:00	10 SLOW RATWE	02:07:12
11 BUMP PLUG	02:10:31	12 CHECK FLOATS	02:13:01
13 END JOB	02:14:06		

Customer: WPX	Job Date: 20-Nov-2012	Sales Order #: 9732703
Well Description: GM 441-12	Job Type: SURFACE	ADC Used: YES
Company Rep: AL DUNIHO	Cement Supervisor: ED ARNOLD	Elite #8: DAN SINCLAIR

OptiCem v6.4.10
21-Nov-12 02:15

WPX - GM 441-12 9 5/8" SURFACE



Customer: WPX	Job Date: 20-Nov-2012	Sales Order #: 9732703
Well Description: GM 441-12	Job Type: SURFACE	ADC Used: YES
Company Rep: AL DUNIHOO	Cement Supervisor: ED ARNOLD	Elite #8: DAN SINCLAIR

OptiCem v6.4.10
21-Nov-12 02:16