

1625 Broadway
Suite 2000
Denver, CO 80202

Tel: 303.228.4000
Fax: 303.228.4280
www.nobleenergyinc.com



3/19/2013

Colorado Oil and Gas Conservation Commission
The Chancery Building
1120 Lincoln Street, Suite 801
Denver, CO 80203
Attn: Mr. Matt Lepore, Director

RE: Crow Creek State AC36-77-1HN
Niobrara New Drill
Township 7 North, Range 63 West, 6th P.M.
Section 36: SE/4SW/4: 270' FSL & 1793' FWL (Surface Location)
Section 36: SE/4SW/4: 728' FSL & 1654' FWL (Beginning of Lateral)
Section 36: NE/4NW/4: 535' FNL & 1650' FWL (Bottom Hole Location)
Weld County, Colorado

Dear Director:

Noble Energy, Inc. ("NEI") is planning to drill the captioned boundary well in accordance with the provisions of COGCC Rule 318A.e.

NEI's proposed wellbore spacing unit consists of the W/2, T7N, R63W, creating a 320-acre wellbore spacing unit for the Niobrara formation. NEI is the only owner within the proposed wellbore spacing unit, therefore NEI hereby attests that no notice letters are required under COGCC Rule 318A(I).e.(6).

Enclosed are copies of the following documents to assist you in your review and approval of NEI's proposed APD for the captioned well:

- Map & plat illustrating proposed wellbore spacing unit.

Thank you for your attention to the enclosed. NEI respectfully requests that the COGCC review the enclosed information and approve the Application for Permit to Drill the captioned well.

Sincerely,

A handwritten signature in blue ink, appearing to read 'Liz Lindow', written over the word 'Sincerely,'.

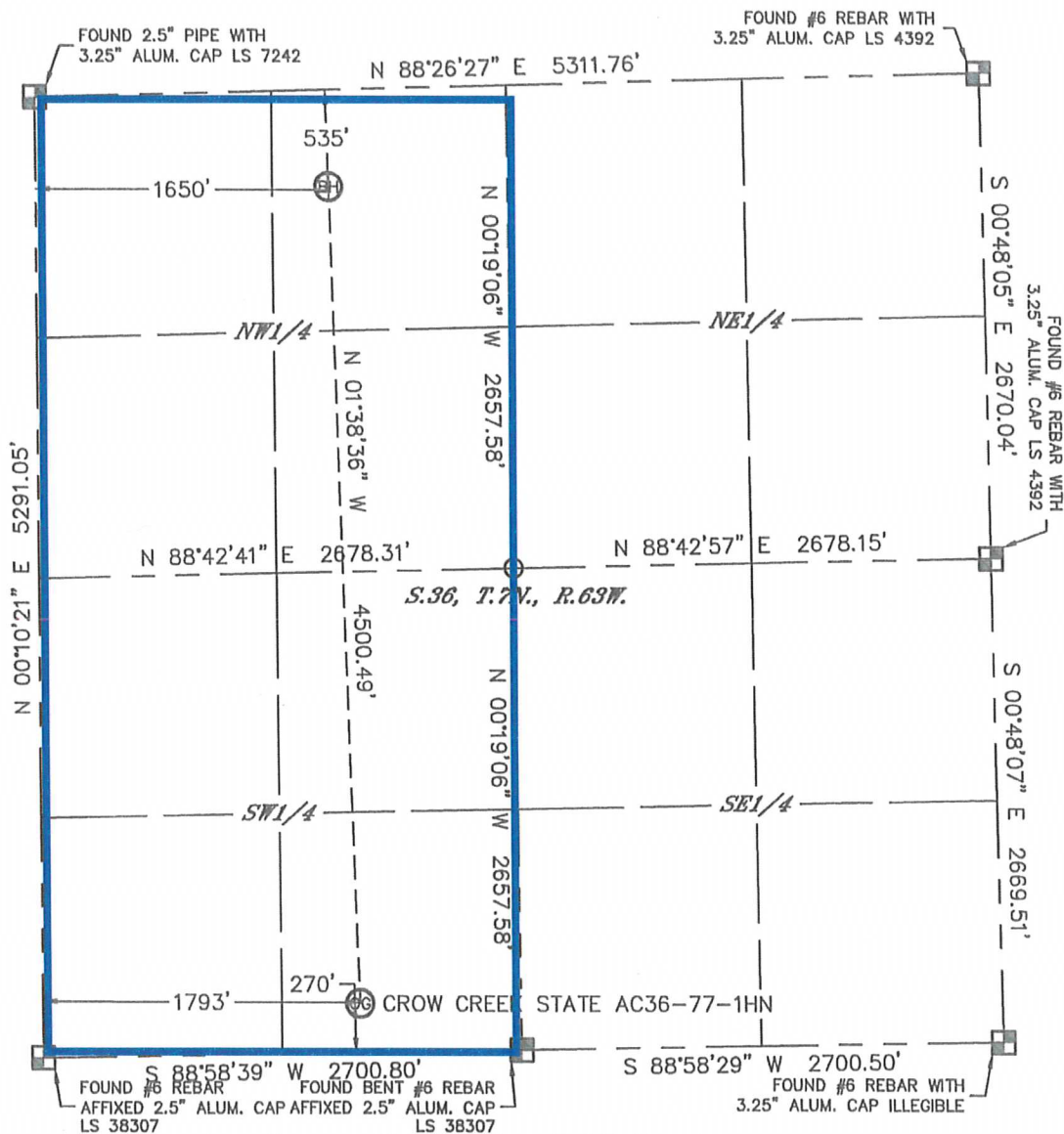
Liz Lindow
Regulatory Analyst
Noble Energy Inc.

Lat40°, Inc. 1635 Foxtrail Drive, Suite 325 Loveland, CO 970-776-3321

WELL LOCATION CERTIFICATE

THIS MAP DOES NOT REPRESENT A BOUNDARY SURVEY

SECTION: 36
TOWNSHIP: 7N
RANGE: 63W



In accordance with a request from Greg Wilson with Noble Energy Inc. Lat40°, Inc. has determined the surface location of the CROW CREEK STATE AC36-77-1HN to be 270' from the SOUTH line and 1793' from the WEST line and the bottom hole to be 535' from the NORTH line and 1650' from the WEST line as measured at right angles from the section lines of Section 36, Township 7 North, Range 63 West of the Sixth Principal Meridian, County of Weld, State of Colorado.

I hereby state that this Well Location Certificate was prepared by me, or under my direct supervision, that the fieldwork was completed on 10/9/12, for and on behalf of Noble Energy Inc. That this is not a Land Survey Plat or an Improvement Survey Plat, and that it is not to be relied upon for establishment of fence, building, or other future improvement lines.

NOTE:

- 1) Bearings shown are Grid Bearings of the Colorado State Plane Coordinate System, North Zone, North American Datum 1983/2007. The lineal dimensions as contained herein are based upon the "U.S. Survey Foot."
- 2) Ground elevations are based on an observed GPS elevation (NAVD 1988 DATUM).
- 3) NEAREST EXISTING WELL: NONE WITHIN SECTION
- 4) IMPROVEMENTS: See LOCATION DRAWING for all visible Improvements within 400' of disturbed area.
- 5) SURFACE USE: RANGELAND
- 6) INSTRUMENT OPERATOR: ADAM KELLY

SURFACE LOCATION

LAT: 40.52358°N
LONG: 104.38780°W
PDOP: 1.8
ELEV: 4789'
1/4, 1/4: SE1/4SW1/4
NEAREST PROPERTY LINE: 270' S

BOTTOM HOLE

LAT: 40.53593°N
LONG: 104.38806°W

NOTE

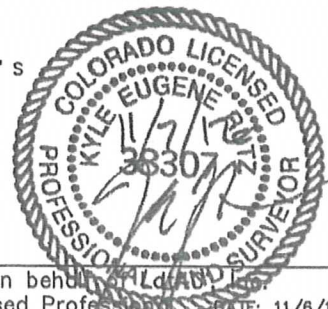
According to Colorado law, you must commence any legal action based upon any defect in this W.L.C. within three years after you discover such defect. In no event, may any action based upon any defect in this survey be commenced more than ten years after the date of the certificate shown hereon. (13-80-105 C.R.S.)

LEGEND

- = ALIQUOT MONUMENT AS DESCRIBED
- = CALCULATED POSITION

Kyle E. Rutz-On behalf of Lat40° Inc.
Colorado Licensed Professional
Land Surveyor No. 38307

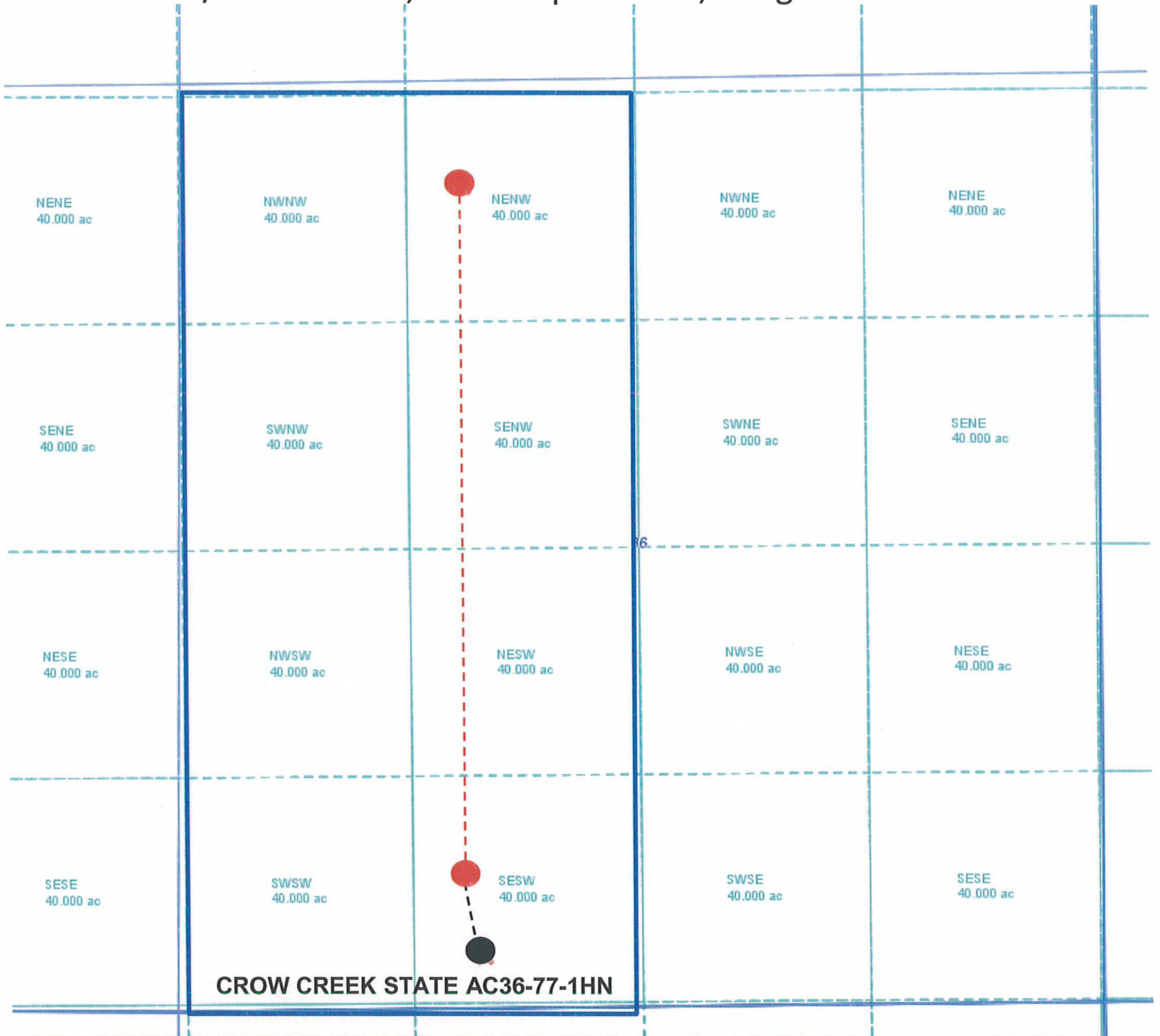
DATE: 11/6/12
PROJECT#: 2012141



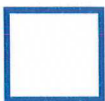
Crow Creek State AC36-77-1HN

Proposed Spacing Unit – Noble Energy, Inc

W/2 Section 36, Township 7 North, Range 63 West



Legend



Proposed 320.00± acre spacing unit



Bottom Hole Location