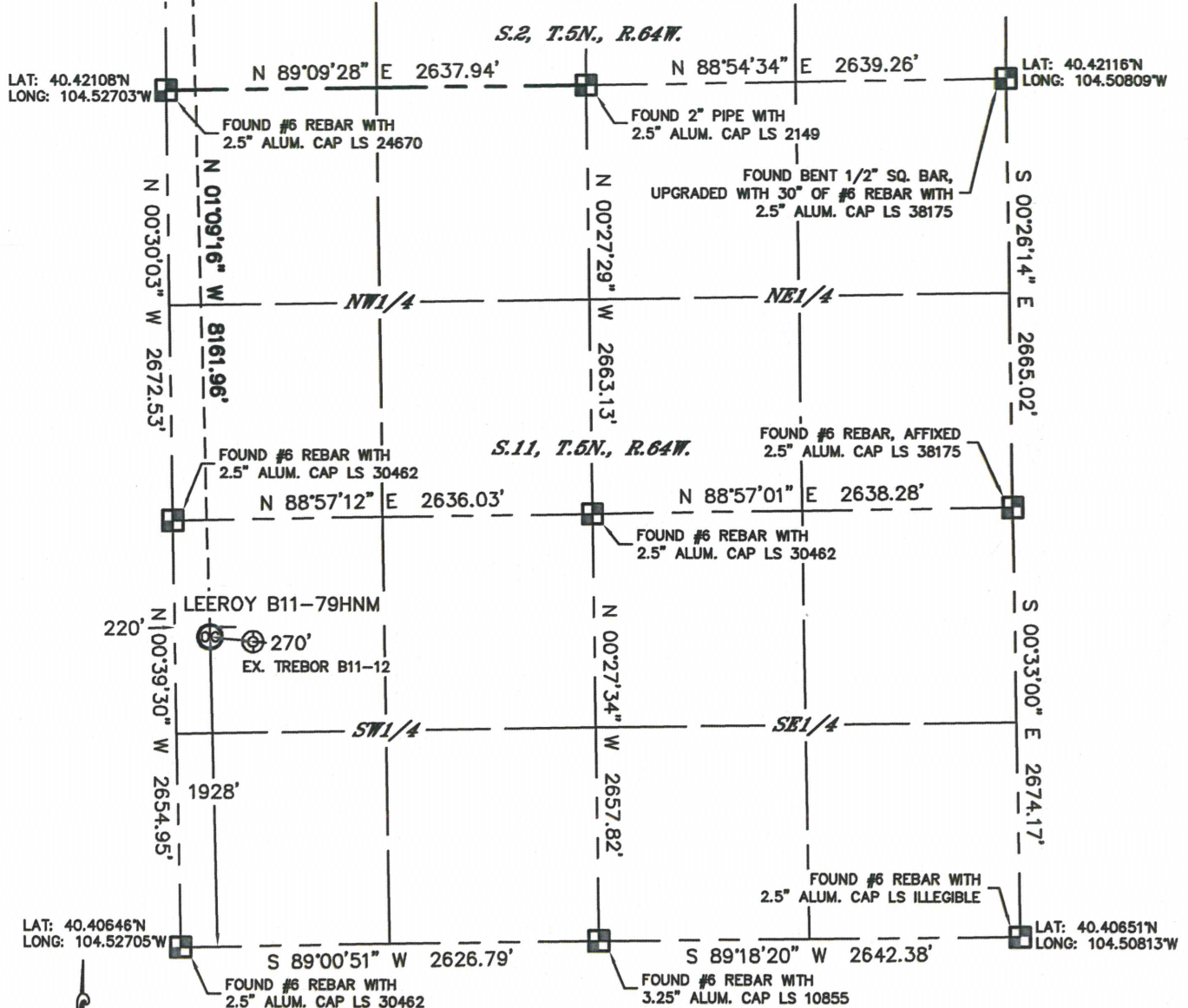


WELL LOCATION CERTIFICATE

SECTION: 11
TOWNSHIP: 5N
RANGE: 64W

THIS MAP DOES NOT REPRESENT A BOUNDARY SURVEY



In accordance with a request from Mike Rodine with Noble Energy Inc.
Lat40°, Inc. has determined the surface location of the LEEROY B11-79HNM to be 1928' from the SOUTH
line and 220' from the WEST line as measured at right angles from the section lines of Section 11,
Township 5 North, Range 64 West and the bottom hole to be 535' from the NORTH line and 75' from the
WEST line as measured at right angles from the section lines of Section 2, Township 5 North, Range 64
West of the Sixth Principal Meridian, County of Weld, State of Colorado.

I hereby state that this Well Location Certificate was prepared by me, or under my direct
supervision, that the fieldwork was completed on 4/5/2012, for and on behalf of Noble Energy Inc.
That this is not a Land Survey Plat or an Improvement Survey Plat, and that it is not to be relied
upon for establishment of fence, building, or other future improvement lines.

NOTE:

- 1) Bearings shown are Grid Bearings of the Colorado State Plane Coordinate System, North Zone, North American Datum 1983/2007. The lineal dimensions as contained herein are based upon the "U.S. Survey Foot."
- 2) Ground elevations are based on an observed GPS elevation (NAVD 1988 DATUM).
- 3) NEAREST EXISTING WELL: TREBOR B11-12, 270'
- 4) IMPROVEMENTS: See LOCATION DRAWING for all visible improvements within 400' of disturbed area.
- 5) SURFACE USE: CROP LAND
- 6) INSTRUMENT OPERATOR: ADAM KELLY

NOTE

According to Colorado law, you must commence any legal action based upon any defect in this W.L.C. within three years after you discover such defect. In no event, may any action based upon any defect in this survey be commenced more than ten years after the date of the certificate shown hereon. (13-80-105 C.R.S.)

LEGEND

- = ALIQUOT MONUMENT AS DESCRIBED
- = CALCULATED POSITION

SURFACE LOCATION

LAT: 40.41175°N
LONG: 104.52626°W
PDOP: 1.9
ELEV: 4603'
1/4, 1/4: NW1/4SW1/4
NEAREST PROPERTY LINE: 220' W

BOTTOM HOLE

LAT: 40.43415°N
LONG: 104.52653°W



(SHEET 1 OF 2)

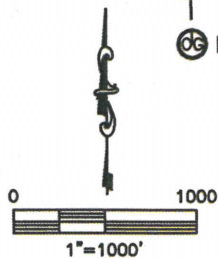
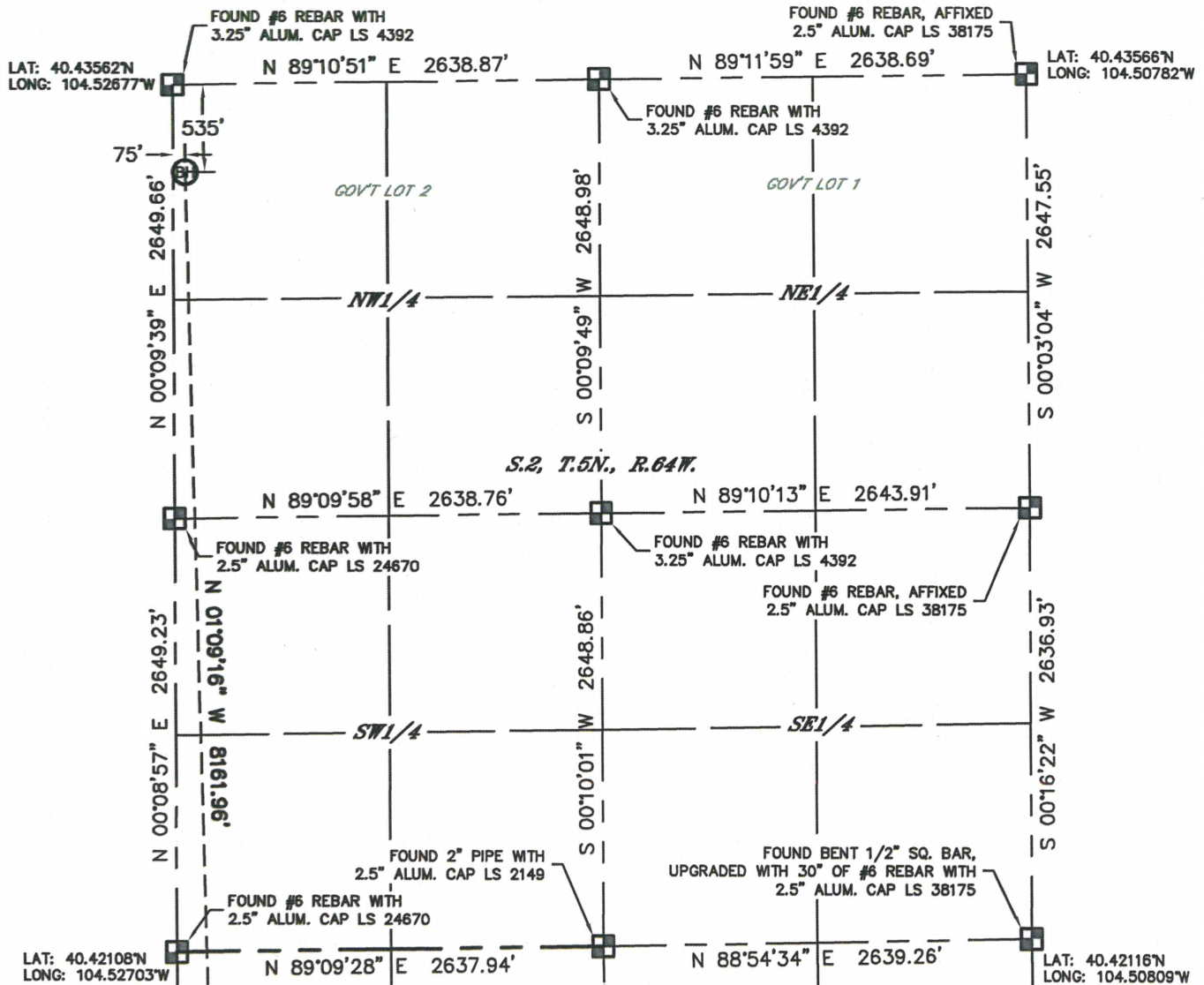
Brian T. Brinkman-On Behalf of Lat40°, Inc.
Colorado Licensed Professional Surveyor No. 38175
DATE: 4/5/2012
PROJECT#: 2012029

Lat40°, Inc. 1635 Foxtrail Drive, Suite 325 Loveland, CO 970-776-3321

WELL LOCATION CERTIFICATE

THIS MAP DOES NOT REPRESENT A BOUNDARY SURVEY

SECTION: 11
TOWNSHIP: 5N
RANGE: 64W



NOTE
According to Colorado law, you must commence any legal action based upon any defect in this W.L.C. within three years after you discover such defect. In no event, may any action based upon any defect in this survey be commenced more than ten years after the date of the certificate shown hereon. (13-80-105 C.R.S.)

LEGEND
[Square with cross] = ALIQUOT MONUMENT AS DESCRIBED
[Circle] = CALCULATED POSITION

(SHEET 2 OF 2)

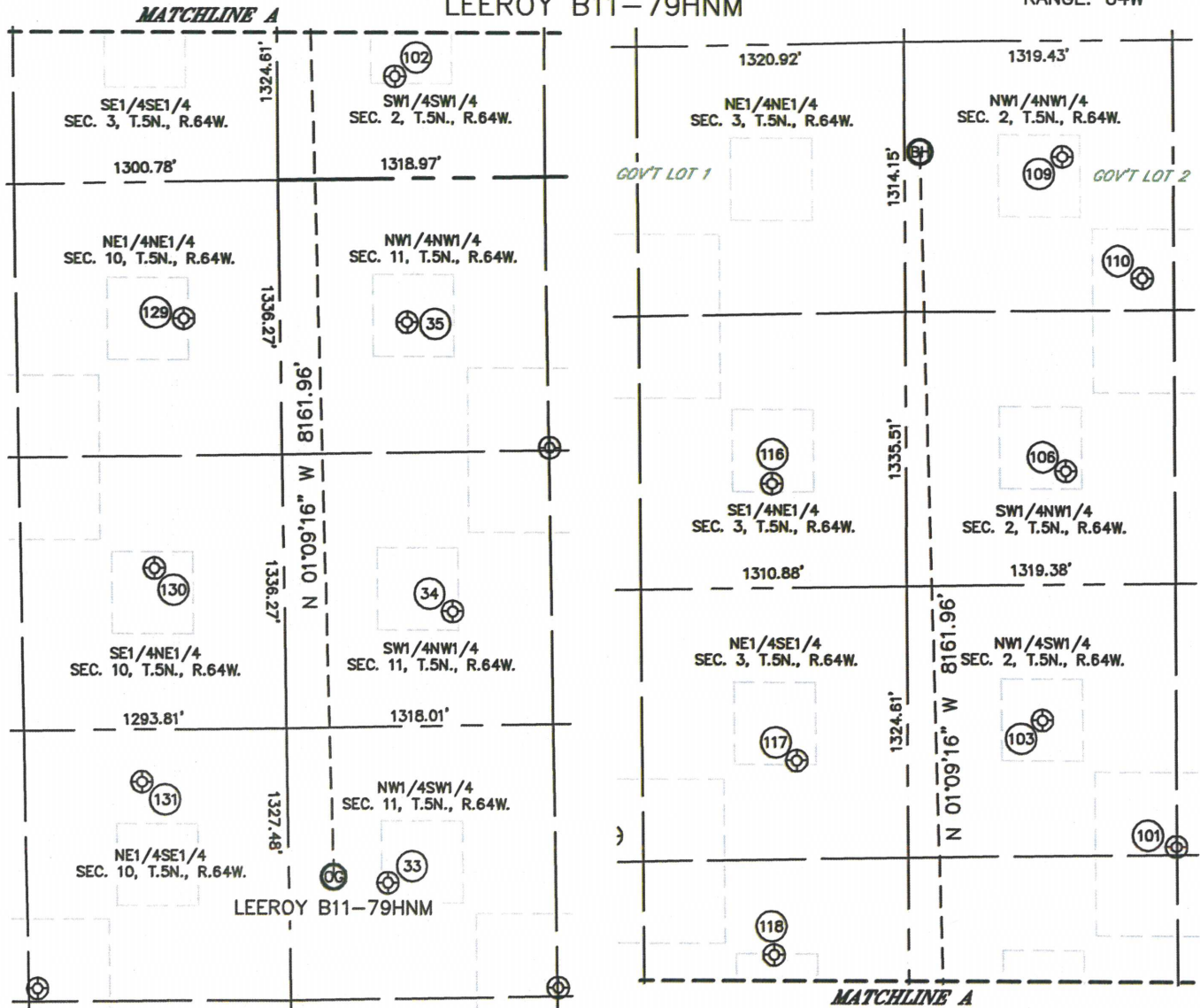
Brian T. Brinkman—On behalf of Lat40°, Inc.
Colorado Licensed Professional Land Surveyor No. 38175
DATE: 4/5/2012
PROJECT#: 2012029



SITE SKETCH

LEEROY B11-79HNM

SECTION: 11
TOWNSHIP: 5N
RANGE: 64W



33
TREBOR B11-12
NW1/4SW1/4
1894' FSL
488' FWL
LAT-40.41166°N
LONG-104.52530°W
PDOP: 1.4
ELEV: 4603'

34
TREBOR B11-5
SW1/4NW1/4
2112' FNL
831' FWL
LAT-40.41529°N
LONG-104.52407°W
PDOP: 1.2
ELEV: 4602'

35
TREBOR B11-4
NW1/4NW1/4
700' FNL
628' FWL
LAT-40.41916°N
LONG-104.52478°W
PDOP: 2.3
ELEV: 4608'

101
BUCKMUR B2-25
NW1/4SW1/4
1363' FSL
1317' FWL
LAT-40.42483°N
LONG-104.52224°W
PDOP: 2.5
ELEV: 4620'

102
BUCKLEN 1-2
SW1/4SW1/4
499' FSL
580' FWL
LAT-40.42245°N
LONG-104.52493°W
PDOP: 1.5
ELEV: 4611'

103
BUCKLEN B2-12
NW1/4SW1/4
1987' FSL
660' FWL
LAT-40.42654°N
LONG-104.52457°W
PDOP: 1.6
ELEV: 4625'

106
BAKER B2-5
SW1/4NW1/4
2097' FNL
781' FWL
LAT-40.42987°N
LONG-104.52407°W
PDOP: 1.9
ELEV: 4639'

109
BAKER B2-4
NW1/4NW1/4
567' FNL
772' FWL
LAT-40.43407°N
LONG-104.52403°W
PDOP: 1.4
ELEV: 4638'

110
FRITZLER B02-19
NW1/4NW1/4
1161' FNL
1164' FWL
LAT-40.43244°N
LONG-104.52265°W
PDOP: 1.1
ELEV: 4629'

116
CLEMONS 42-3
SE1/4NE1/4
2138' FNL
661' FEL
LAT-40.42973°N
LONG-104.52925°W
PDOP: 1.4
ELEV: 4634'

117
ANNIE B3-9
NE1/4SE1/4
1806' FSL
547' FEL
LAT-40.42602°N
LONG-104.52891°W
PDOP: 1.3
ELEV: 4613'

118
SCHOENLEBER 16-3
SE1/4SE1/4
860' FSL
662' FEL
LAT-40.42342°N
LONG-104.52937°W
PDOP: 1.3
ELEV: 4607'

129
PDC-WACKER 41-10
NE1/4NE1/4
667' FNL
473' FEL
LAT-40.41924°N
LONG-104.52874°W
PDOP: 5.0
ELEV: 4604'

130
WACKER 42-10
SE1/4NE1/4
1881' FNL
636' FEL
LAT-40.41590°N
LONG-104.52933°W
PDOP: 2.1
ELEV: 4606'

131
SLW B1-10
NE1/4SE1/4
2394' FSL
715' FEL
LAT-40.41304°N
LONG-104.52962°W
PDOP: 1.5
ELEV: 4610'

