

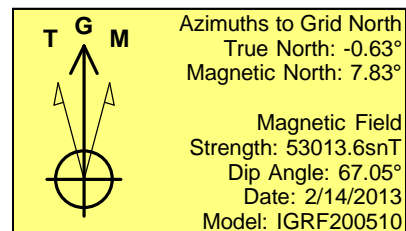
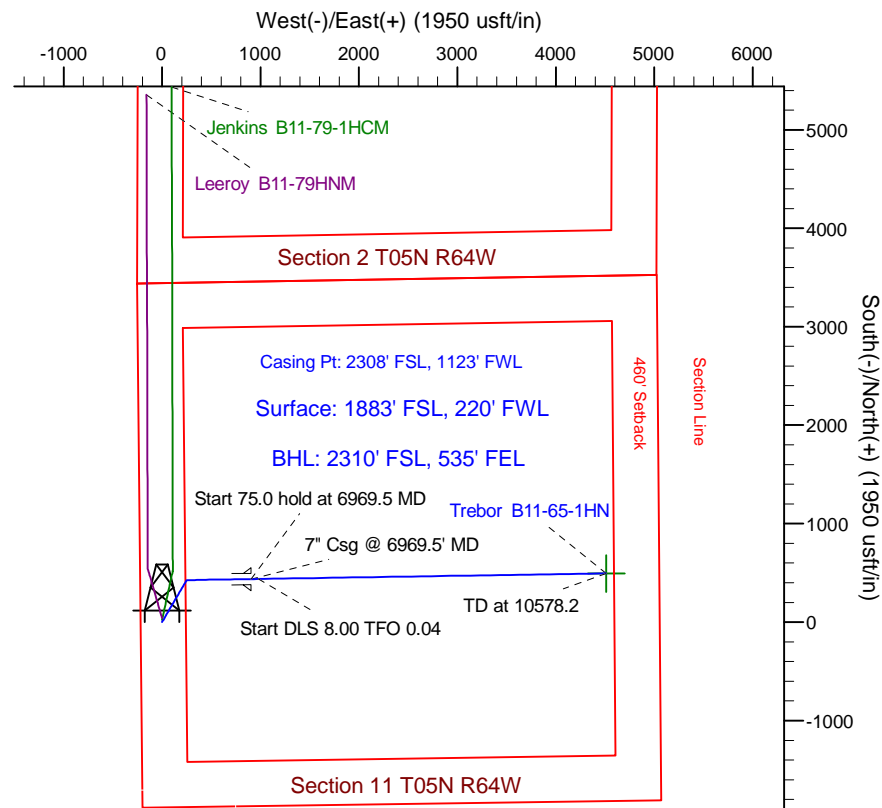
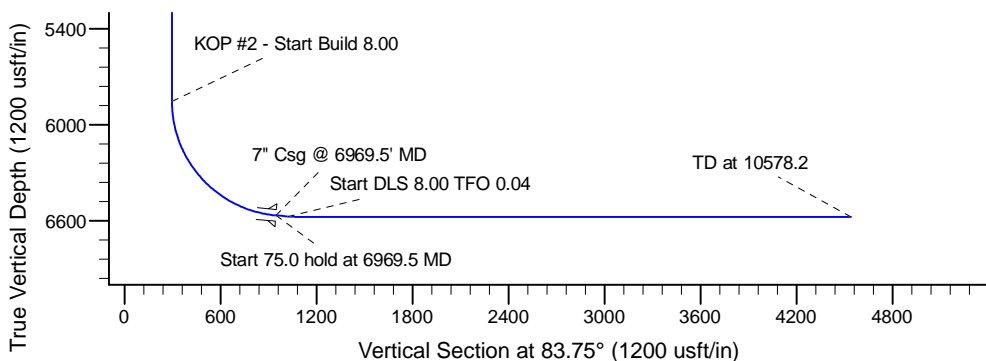
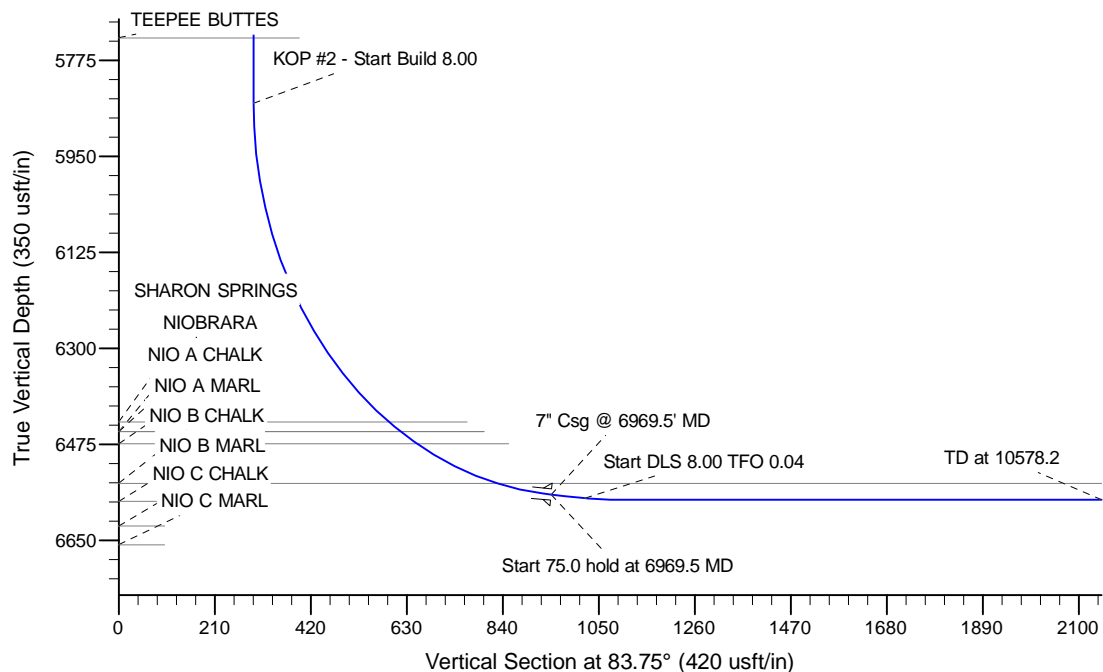
Project: Wattenberg Field
Site: B (Sec.11-T05N-R64W) Weld county, CO
Well: Trebor B11-65-1HN
Wellbore: Original Drilling
Design: APD - Rev 0

Northern Region Drilling

Geodetic System: US State Plane 1983
Datum: North American Datum 1983
Ellipsoid: GRS 1980
Zone: Colorado Northern Zone
System Datum: Mean Sea Level

SECTION DETAILS

Sec	MD	Inc	Azi	TVD	+N/-S	+E/-W	Dleg	TFace	VSec	Target
1	0.0	0.00	0.00	0.0	0.0	0.0	0.00	0.00	0.0	
2	2000.0	0.00	0.00	2000.0	0.0	0.0	0.00	0.00	0.0	
3	2699.0	13.98	30.35	2692.1	73.2	42.9	2.00	30.35	50.6	
4	4044.7	13.98	30.35	3997.9	353.8	207.1	0.00	0.00	244.4	
5	4743.7	0.00	0.00	4690.0	427.0	250.0	2.00	180.00	295.0	
6	5907.0	0.00	0.00	5853.3	427.0	250.0	0.00	0.00	295.0	
7	6969.5	85.00	89.09	6566.8	437.4	903.7	8.00	89.09	946.0	
8	7044.5	85.00	89.09	6573.3	438.6	978.4	0.00	0.00	1020.4	
9	7107.0	90.00	89.09	6576.0	439.6	1040.8	8.00	0.04	1082.5	
10	10578.2	90.00	89.09	6576.0	494.5	4511.6	0.00	0.00	4538.6	Trebor B11-65-1HN BHL 2310'FSL, 535'FEL



WELL DETAILS: Trebor B11-65-1HN

Ground Level: 4603.0			
Northing	Easting	Latitude	Longitude
0.0	0.0	1394285.90	3271144.70
		40.411630	-104.526260

Plan: APD - Rev 0 (Trebor B11-65-1HN/Original Drilling)

Created By: Shailey Jewell Date: 14:33, February 15 2013

Checked: _____ Date: _____

Reviewed: _____ Date: _____

Approved: _____ Date: _____