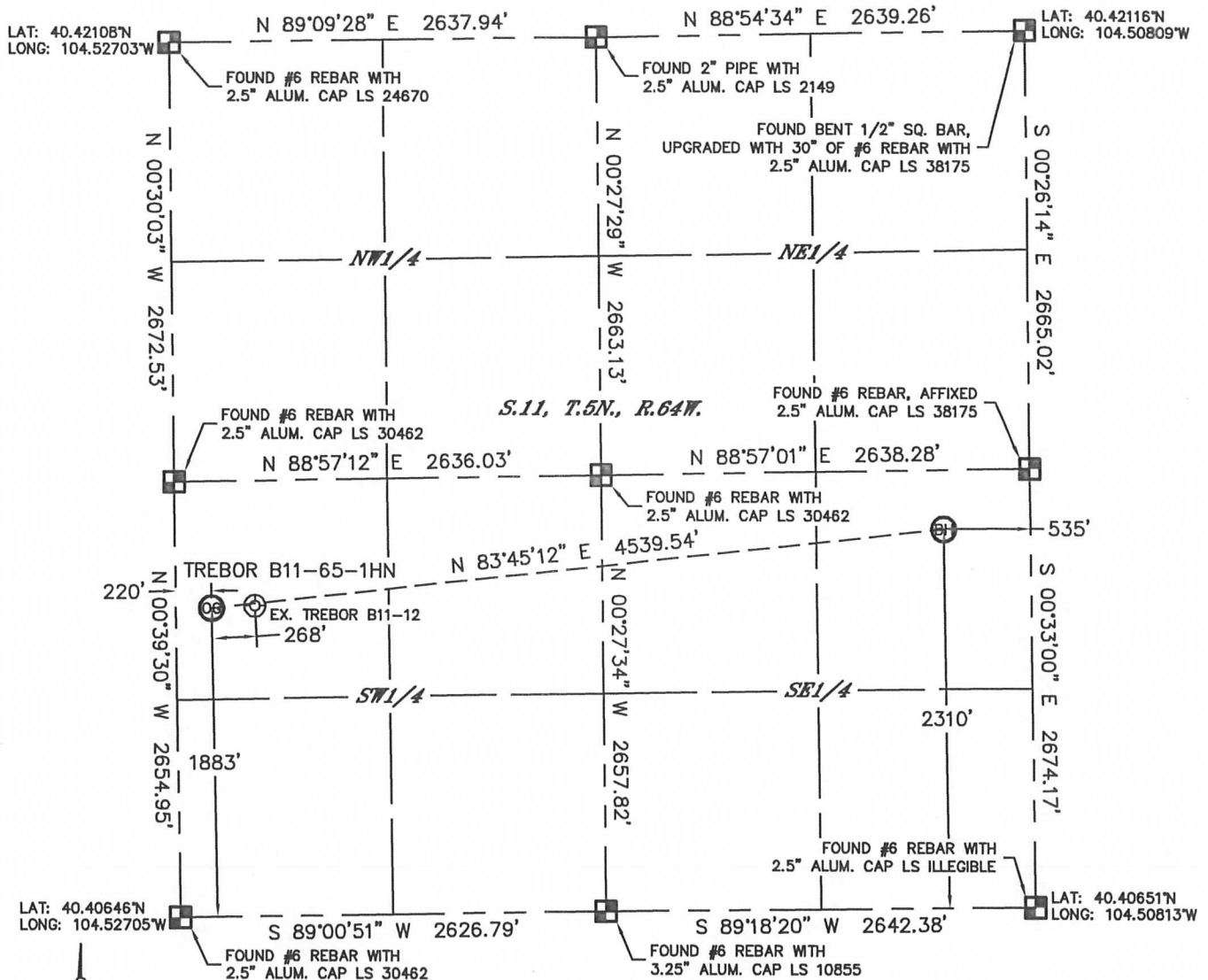


Lat40°, Inc. 1635 Foxtrail Drive, Suite 325 Loveland, CO 970-776-3321

WELL LOCATION CERTIFICATE

THIS MAP DOES NOT REPRESENT A BOUNDARY SURVEY

SECTION: 11
TOWNSHIP: 5N
RANGE: 64W



In accordance with a request from Mike Rodine with Noble Energy Inc., Lat40°, Inc. has determined the surface location of the TREBOR B11-65-1HN to be 1883' from the SOUTH line and 220' from the WEST line and the bottom hole to be 2310' from the SOUTH line and 535' from the EAST line as measured at right angles from the section lines of Section 11, Township 5 North, Range 64 West of the Sixth Principal Meridian, County of Weld, State of Colorado.

I hereby state that this Well Location Certificate was prepared by me, or under my direct supervision, that the fieldwork was completed on 4/5/2012, for and on behalf of Noble Energy Inc. That this is not a Land Survey Plat or an Improvement Survey Plat, and that it is not to be relied upon for establishment of fence, building, or other future improvement lines.

NOTE:

- 1) Bearings shown are Grid Bearings of the Colorado State Plane Coordinate System, North Zone, North American Datum 1983/2007. The lineal dimensions as contained herein are based upon the "U.S. Survey Foot."
- 2) Ground elevations are based on an observed GPS elevation (NAVD 1988 DATUM).
- 3) NEAREST EXISTING WELL: TREBOR B11-12, 268'
- 4) IMPROVEMENTS: See LOCATION DRAWING for all visible improvements within 400' of disturbed area.
- 5) SURFACE USE: CROP LAND
- 6) INSTRUMENT OPERATOR: ADAM KELLY

SURFACE LOCATION

LAT: 40.41163°N
LONG: 104.52626°W
PDOP: 1.9
ELEV: 4603'
1/4, 1/4: NW1/4SW1/4
NEAREST PROPERTY LINE: 220' W

BOTTOM HOLE

LAT: 40.41285°N
LONG: 104.51004°W

NOTE

According to Colorado law, you must commence any legal action based upon any defect in this W.L.C. within three years after you discover such defect. In no event, may any action based upon any defect in this survey be commenced more than ten years after the date of the certificate shown hereon. (13-80-105 C.R.S.)

LEGEND

- = ALIQUOT MONUMENT AS DESCRIBED
○ = CALCULATED POSITION

Brian T. Brinkman-On Behalf of Lat40°, Inc.
Colorado Licensed Professional Land Surveyor No. 38175
DATE: 4/5/2012
PROJECT#: 2012029

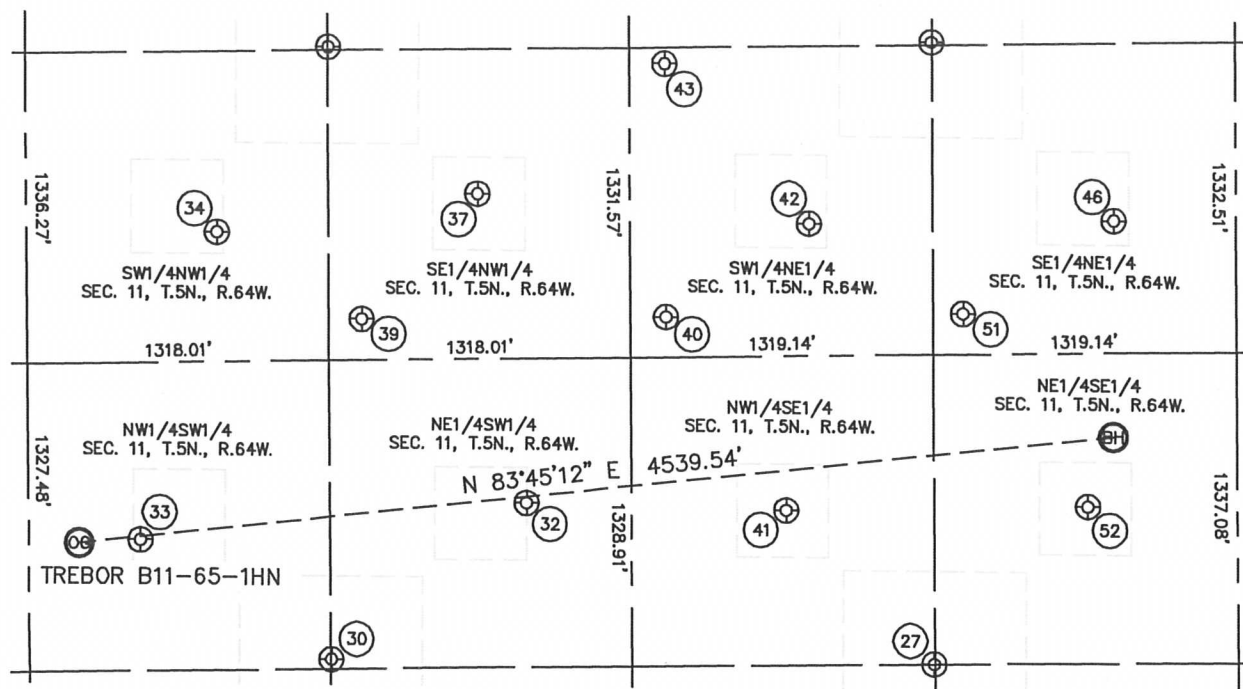


Lat40°, Inc. 1635 Foxtrail Drive, Suite 325 Loveland, CO 970-776-3321

SITE SKETCH

TREBOR B11-65-1HN

SECTION: 11
TOWNSHIP: 5N
RANGE: 64W



27

TREBOR B11-23
NW1/4SE1/4
1334' FSL
1325' FEL
LAT-40.41017N
LONG-104.51288W
PDOP: 1.4
ELEV: 4596'

30

TREBOR B11-25
NE1/4SW1/4
1370' FSL
1318' FWL
LAT-40.41024N
LONG-104.52232W
PDOP: 1.4
ELEV: 4599'

32

TREBOR B11-11
NE1/4SW1/4
2036' FSL
2175' FWL
LAT-40.41208N
LONG-104.51924W
PDOP: 1.3
ELEV: 4598'

33

TREBOR B11-12
NW1/4SW1/4
1894' FSL
488' FWL
LAT-40.41166N
LONG-104.52530W
PDOP: 1.4
ELEV: 4603'

34

TREBOR B11-5
SW1/4NW1/4
2112' FNL
831' FWL
LAT-40.41529N
LONG-104.52407W
PDOP: 1.2
ELEV: 4602'

37

TREBOR B11-6
SE1/4NW1/4
1955' FNL
1970' FWL
LAT-40.41573N
LONG-104.51998W
PDOP: 1.1
ELEV: 4602'

39

TREBOR B11-20
SE1/4NW1/4
2490' FNL
1462' FWL
LAT-40.41426N
LONG-104.52180W
PDOP: 1.2
ELEV: 4599'

40

TREBOR B11-21
SW1/4NE1/4
2490' FNL
2483' FEL
LAT-40.41427N
LONG-104.51703W
PDOP: 1.1
ELEV: 4598'

41

TREBOR B11-10
NW1/4SE1/4
1999' FSL
1966' FEL
LAT-40.41199N
LONG-104.51518W
PDOP: 1.7
ELEV: 4598'

42

TREBOR B11-7
SW1/4NE1/4
2096' FNL
1858' FEL
LAT-40.41537N
LONG-104.51478W
PDOP: 1.2
ELEV: 4601'

43

TREBOR B11-18
SW1/4NE1/4
1401' FNL
2484' FEL
LAT-40.41726N
LONG-104.51702W
PDOP: 1.2
ELEV: 4602'

46

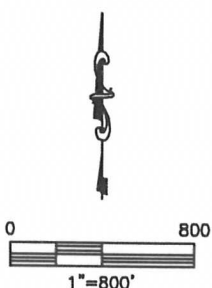
TREBOR B11-8
SE1/4NE1/4
2096' FNL
528' FEL
LAT-40.41540N
LONG-104.51001W
PDOP: 1.1
ELEV: 4604'

51

TREBOR B11-22
SE1/4NE1/4
2489' FNL
1188' FEL
LAT-40.41430N
LONG-104.51238W
PDOP: 1.2
ELEV: 4600'

52

TREBOR B11-9
NE1/4SE1/4
2010' FSL
648' FEL
LAT-40.41202N
LONG-104.51045W
PDOP: 1.3
ELEV: 4598'



DATE: 4/5/2012
PROJECT#: 2012029