

HALLIBURTON

WPX ENERGY ROCKY MOUNTAIN LLC-EBUS

**GM 31-12
GRAND VALLEY
Garfield County , Colorado**

Cement Surface Casing

17-Dec-2012

Post Job Report

The Road to Excellence Starts with Safety

Sold To #: 300721	Ship To #: 2967778	Quote #:	Sales Order #: 900054261
Customer: WPX ENERGY ROCKY MOUNTAIN LLC-EBUS		Customer Rep: Duniho, Al	
Well Name: GM		Well #: 31-12	API/UWI #: 05-045-21714
Field: GRAND VALLEY	City (SAP): PARACHUTE	County/Parish: Garfield	State: Colorado
Lat: N 39.462 deg. OR N 39 deg. 27 min. 41.562 secs.		Long: W 108.052 deg. OR W -109 deg. 56 min. 53.714 secs.	
Contractor: CYCLONE 17		Rig/Platform Name/Num: CYCLONE 17	
Job Purpose: Cement Surface Casing			
Well Type: Development Well		Job Type: Cement Surface Casing	
Sales Person: MAYO, MARK		Srv Supervisor: DEUSSEN, EDWARD	MBU ID Emp #: 485182

Job Personnel

HES Emp Name	Exp Hrs	Emp #	HES Emp Name	Exp Hrs	Emp #	HES Emp Name	Exp Hrs	Emp #
BANKS, BRENT A	10.0	371353	DEUSSEN, EDWARD Eric	10.0	485182	LINN, PAUL Andrew	10.0	479143
SIMINEO, JEROD M	10.0	479954						

Equipment

HES Unit #	Distance-1 way	HES Unit #	Distance-1 way	HES Unit #	Distance-1 way	HES Unit #	Distance-1 way
10248065	60 mile	10616651C	60 mile	10722398	60 mile	11139330	60 mile
11259886	60 mile	11808827	60 mile				

Job Hours

Date	On Location Hours	Operating Hours	Date	On Location Hours	Operating Hours	Date	On Location Hours	Operating Hours
12/17/12	10.0	4.0						

TOTAL Total is the sum of each column separately

Job				Job Times			
Formation Name				Date	Time	Time Zone	
Formation Depth (MD)	Top		Bottom	Called Out	17 - Dec - 2012	06:00	MST
Form Type		BHST		On Location	17 - Dec - 2012	10:00	MST
Job depth MD	1408. ft	Job Depth TVD	1408. ft	Job Started	17 - Dec - 2012	17:27	MST
Water Depth		Wk Ht Above Floor	5. ft	Job Completed	17 - Dec - 2012	18:37	MST
Perforation Depth (MD)	From		To	Departed Loc	17 - Dec - 2012	20:00	MST

Well Data

Description	New / Used	Max pressure psig	Size in	ID in	Weight lbm/ft	Thread	Grade	Top MD ft	Bottom MD ft	Top TVD ft	Bottom TVD ft
-------------	------------	-------------------	---------	-------	---------------	--------	-------	-----------	--------------	------------	---------------

Sales/Rental/3rd Party (HES)

Description	Qty	Qty uom	Depth	Supplier
PLUG,CMTG,TOP,9 5/8,HWE,8.16 MIN/9.06 MA	1	EA		

Tools and Accessories

Type	Size	Qty	Make	Depth	Type	Size	Qty	Make	Depth	Type	Size	Qty	Make
Guide Shoe					Packer					Top Plug	9 5/8	1	HES
Float Shoe					Bridge Plug					Bottom Plug			
Float Collar					Retainer					SSR plug set			
Insert Float										Plug Container	9 5/8	1	HES
Stage Tool										Centralizers			

Miscellaneous Materials

Gelling Agt	Conc	Surfactant	Conc	Acid Type	Qty	Conc	%
Treatment Fld	Conc	Inhibitor	Conc	Sand Type	Size	Qty	

Fluid Data

Stage/Plug #: 1									
Fluid #	Stage Type	Fluid Name	Qty	Qty uom	Mixing Density lbm/gal	Yield ft ³ /sk	Mix Fluid Gal/sk	Rate bbl/min	Total Mix Fluid Gal/sk

Stage/Plug #: 1									
Fluid #	Stage Type	Fluid Name	Qty	Qty uom	Mixing Density lbm/gal	Yield ft ³ /sk	Mix Fluid Gal/sk	Rate bbl/min	Total Mix Fluid Gal/sk
1	Fresh Water Spacer	FRESH WATE	20.00	bbl	.	.0	.0	4.0	
2	VersaCem Lead Cement	VERSACEM (TM) SYSTEM (452010)	200.0	sacks	12.3	2.38	13.75	7.0	13.75
13.75 Gal		FRESH WATER							
3	VersaCem Tail Cement	VERSACEM (TM) SYSTEM (452010)	160.0	sacks	12.8	2.11	11.75	8.0	11.75
11.75 Gal		FRESH WATER							
4	Fresh Water Displacement	FRESH WATER	107.00	bbl	.	.0	.0	10.0	
Calculated Values		Pressures		Volumes					
Displacement	107.1	Shut In: Instant		Lost Returns		Cement Slurry	144.9	Pad	
Top Of Cement	SURFACE	5 Min		Cement Returns	25	Actual Displacement	107.1	Treatment	
Frac Gradient		15 Min		Spacers	20	Load and Breakdown		Total Job	272
Rates									
Circulating		Mixing	7	Displacement	10	Avg. Job	8		
Cement Left In Pipe	Amount	47.20 ft	Reason	Shoe Joint					
Frac Ring # 1 @	ID	Frac ring # 2 @	ID	Frac Ring # 3 @	ID	Frac Ring # 4 @	ID		
The Information Stated Herein Is Correct				Customer Representative Signature					

The Road to Excellence Starts with Safety

Sold To #: 300721	Ship To #: 2967778	Quote #:	Sales Order #: 900054261
Customer: WPX ENERGY ROCKY MOUNTAIN LLC-EBUS	Customer Rep: Dunihoo, Al		
Well Name: GM	Well #: 31-12	API/UWI #: 05-045-21714	
Field: GRAND VALLEY	City (SAP): PARACHUTE	County/Parish: Garfield	State: Colorado
Legal Description:			
Lat: N 39.462 deg. OR N 39 deg. 27 min. 41.562 secs.		Long: W 108.052 deg. OR W -109 deg. 56 min. 53.714 secs.	
Contractor: CYCLONE 17	Rig/Platform Name/Num: CYCLONE 17		
Job Purpose: Cement Surface Casing	Ticket Amount:		
Well Type: Development Well	Job Type: Cement Surface Casing		
Sales Person: MAYO, MARK	Srv Supervisor: DEUSSEN, EDWARD	MBU ID Emp #: 485182	

Activity Description	Date/Time	Cht #	Rate bbl/min	Volume bbl		Pressure psig		Comments
				Stage	Total	Tubing	Casing	
Call Out	12/17/2012 06:00							
Pre-Convoy Safety Meeting	12/17/2012 08:15							ALL HES PERSONNEL
Crew Leave Yard	12/17/2012 08:30							1 ELITE, 1 660, 1 BODYLOAD, 1 PICKUP
Arrive At Loc	12/17/2012 10:00							RIG JUST STARTING TO RUN CASING
Assessment Of Location Safety Meeting	12/17/2012 10:30							
Pre-Rig Up Safety Meeting	12/17/2012 15:45							ALL HES PERSONNEL
Rig-Up Equipment	12/17/2012 16:00							1 HARD LINE TO FLOOR, 2 WATER LINES TO UPRIGHT, BULK HOSES TO BODYLOAD AND 660
Pre-Job Safety Meeting	12/17/2012 17:15							ALL HES PERSONNEL AND RIG CREW
Start Job	12/17/2012 17:27							TD 1423', TP 1408', SJ 47.20', MW 9.8, OH 13 1/2", CSG 9 5/8", 32.3# H-40
Pump Water	12/17/2012 17:28		2	2			59.0	FILL LINES
Pressure Test	12/17/2012 17:31							PRESSURED UP TO 3343 PSI - PRESSURE HELD WELL
Pump Spacer 1	12/17/2012 17:35		4	20			117.0	FRESH WATER SPACER
Pump Lead Cement	12/17/2012 17:44		7	84.8			251.0	200'SKS, 12.3 PPG, 2.38 YIELD, 13.75 GAL/SK
Pump Tail Cement	12/17/2012 18:00		8	60.1			366.0	160 SKS, 12.8 PPG, 2.11 YIELD, 11.75 GAL/SK

Sold To #: 300721

Ship To #: 2967778

Quote #:

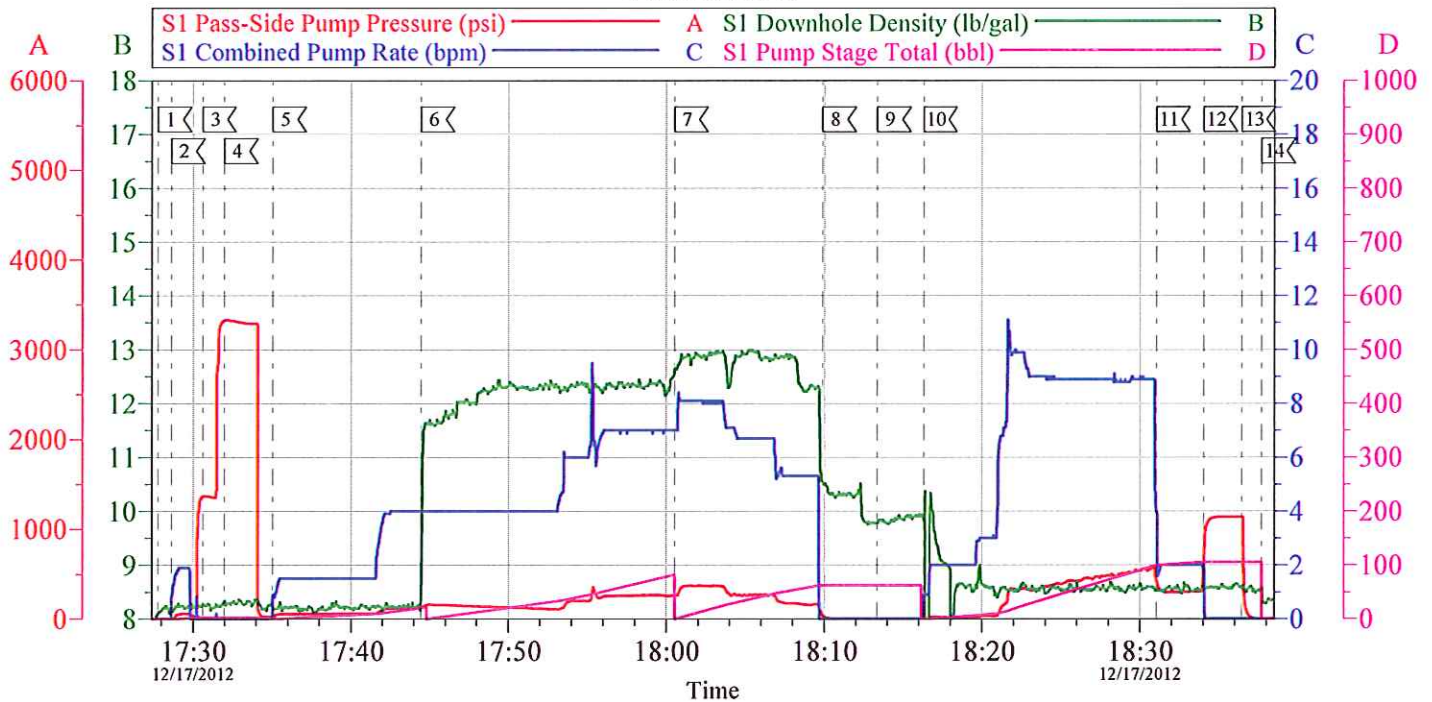
Sales Order #: 900054261

SUMMIT Version: 7.3.0045

Wednesday, January 02, 2013 12:34:00

Activity Description	Date/Time	Cht #	Rate bbl/min	Volume bbl		Pressure psig		Comments
				Stage	Total	Tubing	Casing	
Shutdown	12/17/2012 18:09							
Drop Top Plug	12/17/2012 18:13							
Pump Displacement	12/17/2012 18:16		10	107.1			570.0	FRESH WATER
Slow Rate	12/17/2012 18:31		2	10			301.0	
Bump Plug	12/17/2012 18:34						315.0	PRESSURED UP TO 1117 PSI
Check Floats	12/17/2012 18:36							FLOATS HELD - GOT 1/2 BBL BACK
End Job	12/17/2012 18:37							GOT 25 BBLS CEMENT TO SURFACE / USED 40 LBS SUGAR / NO DERRICK CHARGE OR ADD HOURS
Post-Job Safety Meeting (Pre Rig-Down)	12/17/2012 18:45							ALL HES PERSONNEL
Rig-Down Equipment	12/17/2012 19:00							
Pre-Convoy Safety Meeting	12/17/2012 19:45							ALL HES PERSONNEL
Crew Leave Location	12/17/2012 20:00							THANK YOU FOR USING HALLIBURTON AND ED DEUSSEN AND CREW

WPX - GM 31-12 9 5/8 SURFACE

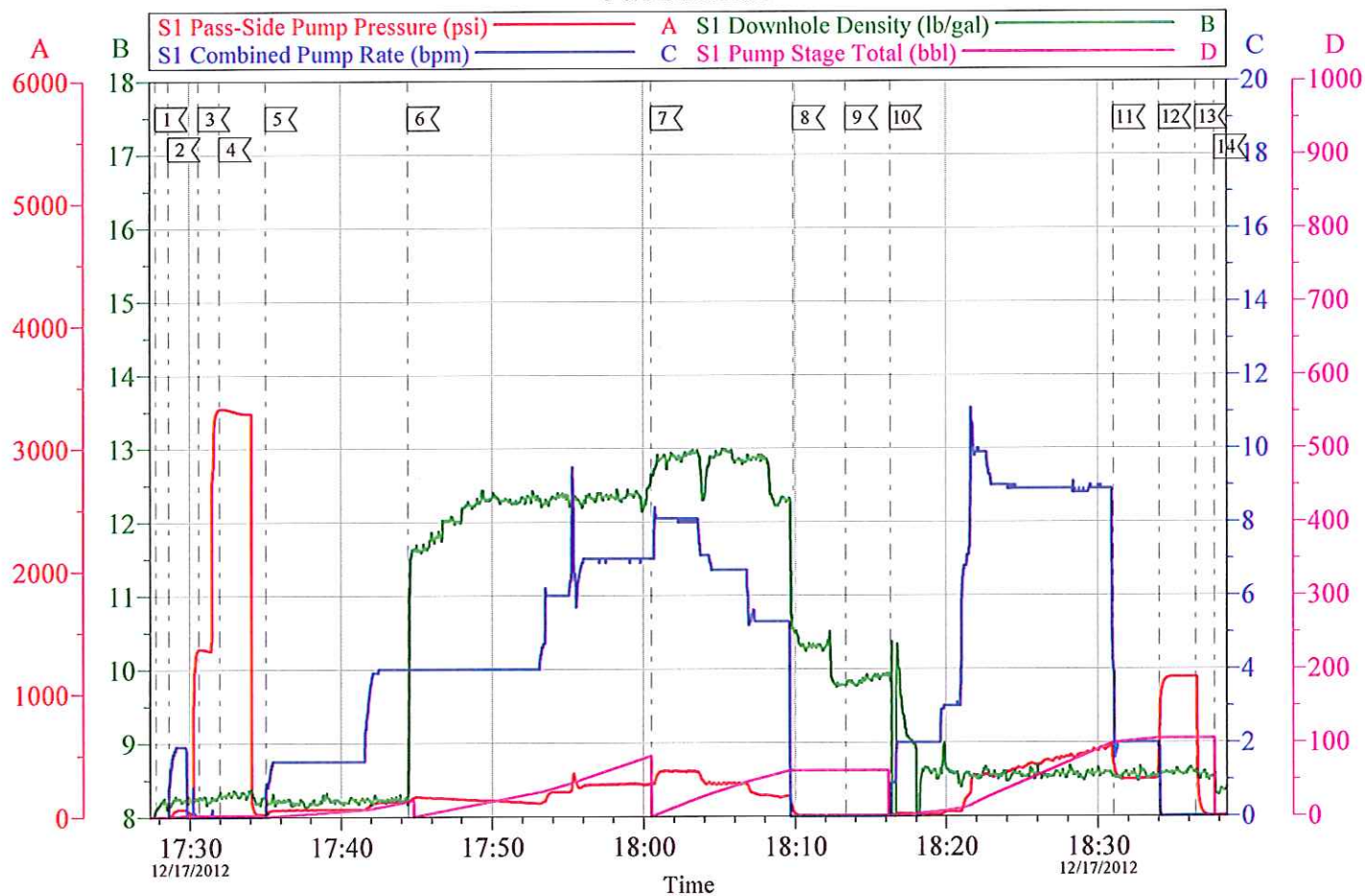


Local Event Log					
1 START JOB	17:27:47	2 FILL LINES	17:28:37	3 5TH GEAR STALLOUT	17:30:36
4 PRESSURE TEST	17:31:59	5 PUMP H2O SPACER	17:35:02	6 PUMP LEAD CEMENT	17:44:28
7 PUMP TAIL CEMENT	18:00:30	8 SHUTDOWN/WASH UP	18:09:53	9 DROP TOP PLUG	18:13:22
10 PUMP DISPLACEMENT	18:16:18	11 SLOW RATE	18:31:02	12 BUMP PLUG	18:34:02
13 CHECK FLOATS	18:36:26	14 END JOB	18:37:43		

Customer: WPX	Job Date: 17-Dec-2012	Sales Order #: 900054261
Well Description: GM 31-12	Job Type: SURFACE	ADC Used: YES
Company Rep: AL DUNIHO	Cement Supervisor: ED DEUSSEN	Elite #4: ANDREW LINN

OptiCem v6.4.10
17-Dec-12 18:43

WPX - GM 31-12 9 5/8 SURFACE



Customer: WPX	Job Date: 17-Dec-2012	Sales Order #: 900054261
Well Description: GM 31-12	Job Type: SURFACE	ADC Used: YES
Company Rep: AL DUNIHO	Cement Supervisor: ED DEUSSEN	Elite #4: ANDREW LINN

OptiCem v6.4.10
17-Dec-12 18:44