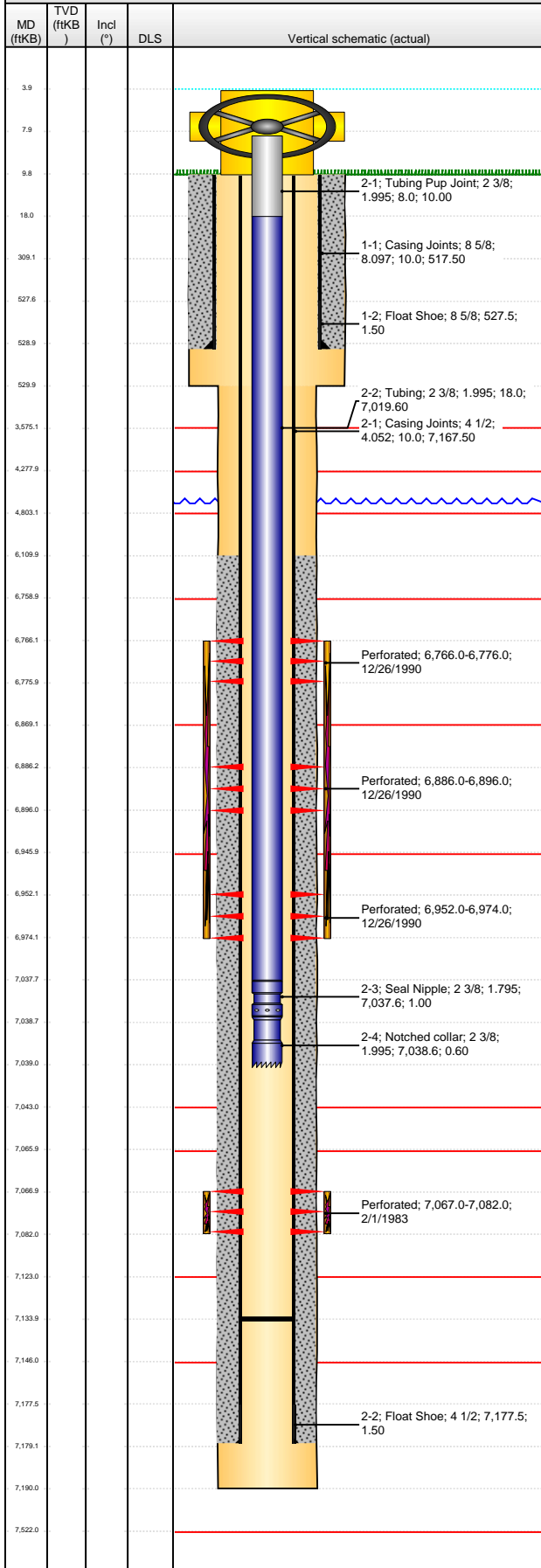


Well Name: SAUER 01

VERTICAL - ORIGINAL HOLE, 3/21/2013 7:23:09 AM



Logs	API 05-123-10998		Business Unit WATTENBERG		District 15		Well Config VERTICAL		
	Original KB Elevation (ft) 4,675.00		KB - GL / MSL (ftKB) 10.00		Spud Date 1/15/1983		P & A Date		
	Comment								
	Directions To Well								
	Congressional Location								
	Quarter 1	Quarter 2	Quarter 3 SW	Quarter 4 SW	Section 33	Township 5 N	Twnshp N...	Range 65	Rng E/W Dir W
	Bottom Hole Location								
	North-South Distance (ft)		From N or S Line		East-West Distance (ft)		From E or W Line		
	Plug Back Total Depths								
	Date		Depth (ftKB)		Method		Com		
1/22/1983		7,170.0		TAG		TAG FILL & LAND TBG			
11/13/2008		7,134.0		TAG					
Wellbore Sections									
Section Des			Size (in)		Act Top (ftKB)		Act Btm (ftKB)		
SURFACE			12 1/4		10.0		530.0		
PRODUCTION			7 7/8		530.0		7,190.0		
Zone Statuses									
Zone Name		Status Date		Status		Job			
CODELL		2/1/1983		PR		DRILLING/COMPLETION - ORIGINAL, 1/15/1983 00:00			
NIOBRARA		1/8/1991		PR		RECOMPLETION, 12/18/1990 00:00			
Casing Strings									
Surface Casing, 529.0ftKB									
Casing Description		Run Date		OD (in)	Wt/Len (l...	Grade	Top (ftKB)	MD (ftKB)	
Surface Casing		1/15/1983		8 5/8	24.00	K-55	10.0	529.0	
Production, 7,179.0ftKB									
Casing Description		Run Date		OD (in)	Wt/Len (l...	Grade	Top (ftKB)	MD (ftKB)	
Production		1/22/1983		4 1/2	10.50	K-55	10.0	7,179.0	
Cement									
Description					Top Depth (ftKB)		Bottom Depth (ftKB)		
SURFACE CASING CEMENT					10.0		529.0		
Description					Top Depth (ftKB)		Bottom Depth (ftKB)		
PRODUCTION CASING CEMENT					6,110.0		7,179.0		
Tubing Components									
Item Des		OD (in)	Wt (lb/ft)	Grade	Jts	Len (ft)	Btm (ftKB)	Btm (TVD) (ftKB)	
Tubing Pup Joint		2 3/8	4.70	J-55	1	10.00	18.0		
Tubing		2 3/8	4.70	J-55	226	7,019.60	7,037.6		
Seal Nipple		2 3/8	0.00	0	1	1.00	7,038.6		
Notched collar		2 3/8	0.00	0	1	0.60	7,039.2		
Perforation Data									
Zone		Bnch/St g	Entered Shot Total	Top (ftKB)		Btm (ftKB)		Date	
NIOBRARA, ORIGINAL HOLE		A	8	6,766.00		6,776.00		12/26/1990	
NIOBRARA, ORIGINAL HOLE		B	10	6,886.00		6,896.00		12/26/1990	
NIOBRARA, ORIGINAL HOLE		C	8	6,952.00		6,974.00		12/26/1990	
CODELL, ORIGINAL HOLE			16	7,067.00		7,082.00		2/1/1983	
Stimulations & Treatments									
Date		Zone			Primary Job Type				
1/1/1983		CODELL, ORIGINAL HOLE			DRILLING/COMPLETION - ORIGINAL				
Technical Result			Tech Result Details			Tech Result Note			
Comment									
Date		Zone			Primary Job Type				
12/27/1990		NIOBRARA, ORIGINAL HOLE			RECOMPLETION				
Technical Result			Tech Result Details			Tech Result Note			
Comment									
Other In Hole									
Run Date		Des			OD (in)	Top (ftKB)	Btm (ftKB)		

Well Name: SAUER 01

VERTICAL - ORIGINAL HOLE, 3/21/2013 7:23:10 AM

VERTICAL - ORIGINAL HOLE, 3/21/2013 7:23:10 AM						Logs				
MD (ftKB)	TVD (ftKB)	Incl (°)	DLS	Vertical schematic (actual)	Logs	Date	Type	Top (ftKB)	Btm (ftKB)	
						1/21/1983	Compensated Density	4,100.0	7,188.0	
						1/21/1983	Induction	530.0	7,186.0	
						1/28/1983	Cement Bond	6,000.0	7,084.0	
3.9										
7.9										
9.8										
18.0										
309.1										
527.6										
528.9										
529.9										
3,575.1										
4,277.9										
4,803.1										
6,109.9										
6,758.9										
6,766.1										
6,775.9										
6,869.1										
6,886.2										
6,896.0										
6,945.9										
6,952.1										
6,974.1										
7,037.7										
7,038.7										
7,039.0										
7,043.0										
7,065.9										
7,066.9										
7,082.0										
7,123.0										
7,133.9										
7,146.0										
7,177.5										
7,179.1										
7,190.0										
7,522.0										