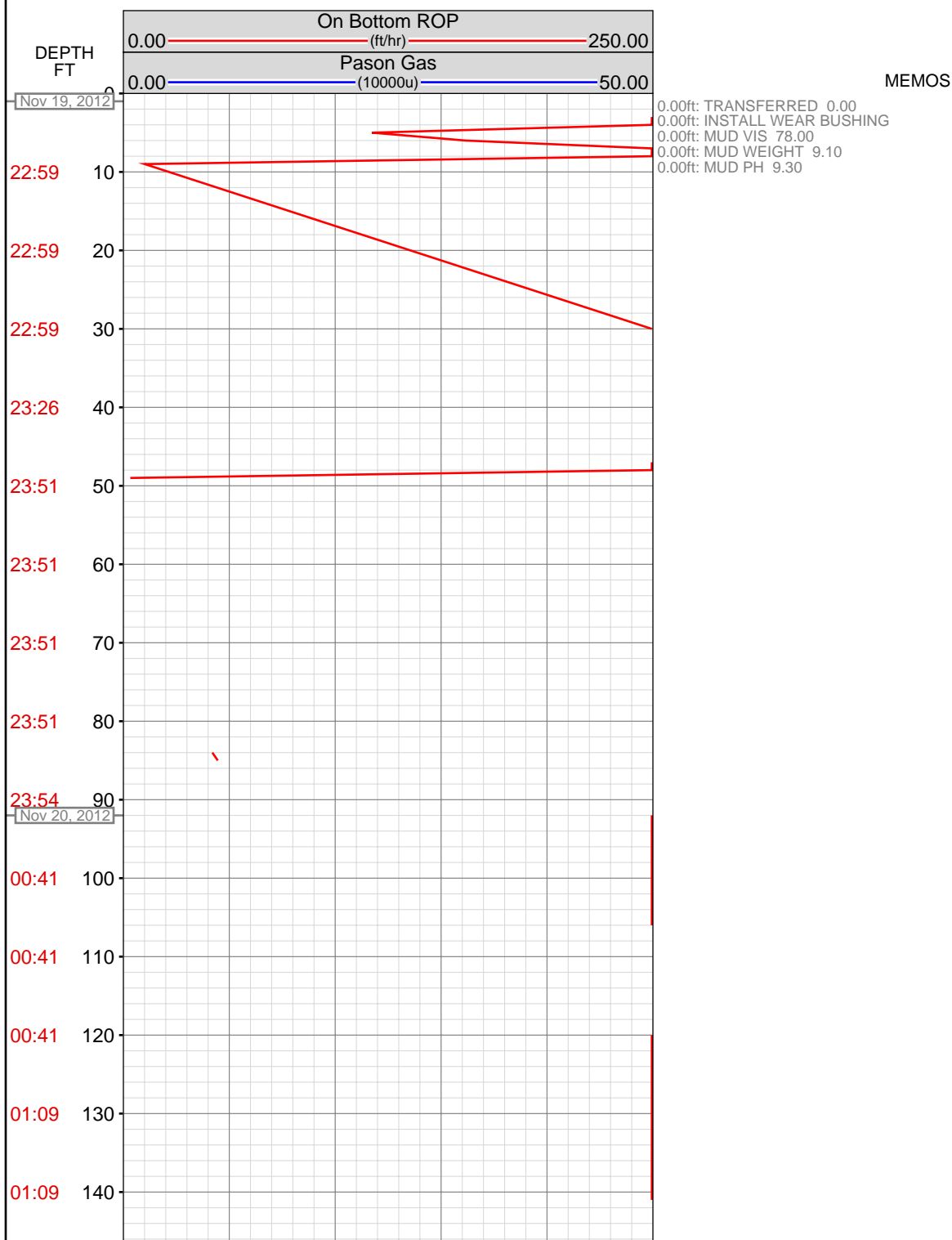


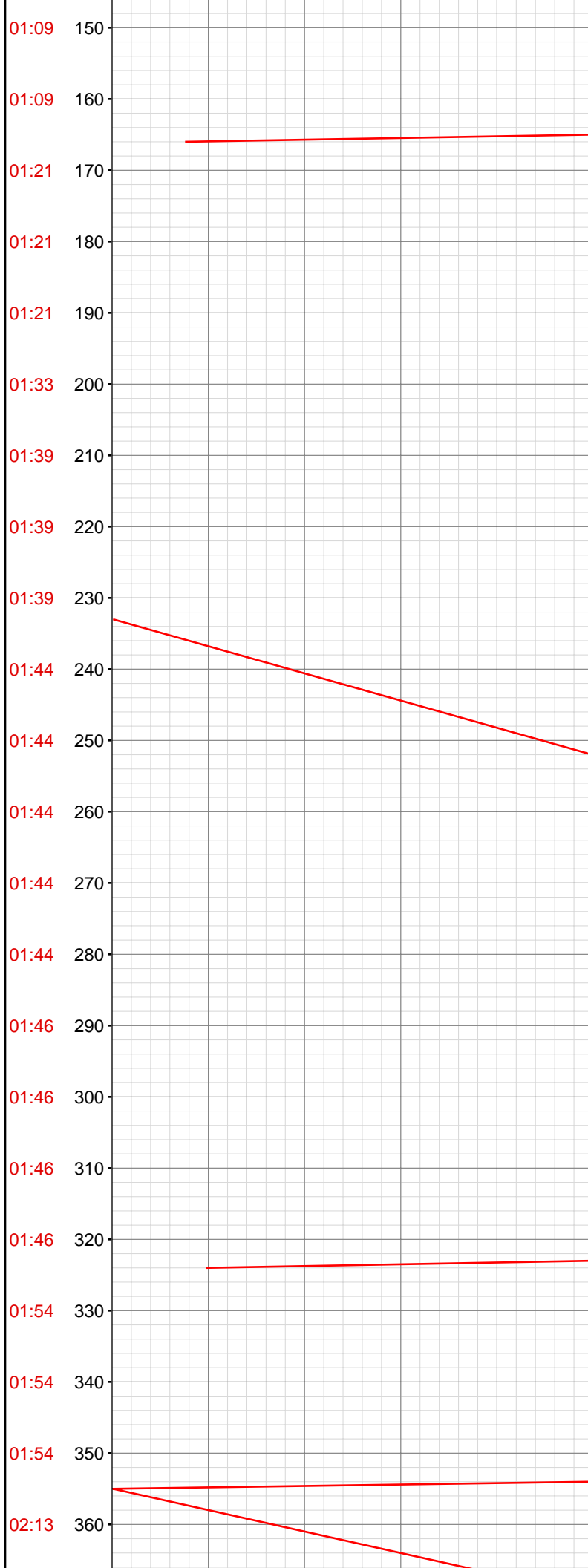
# DataHub EDR Log

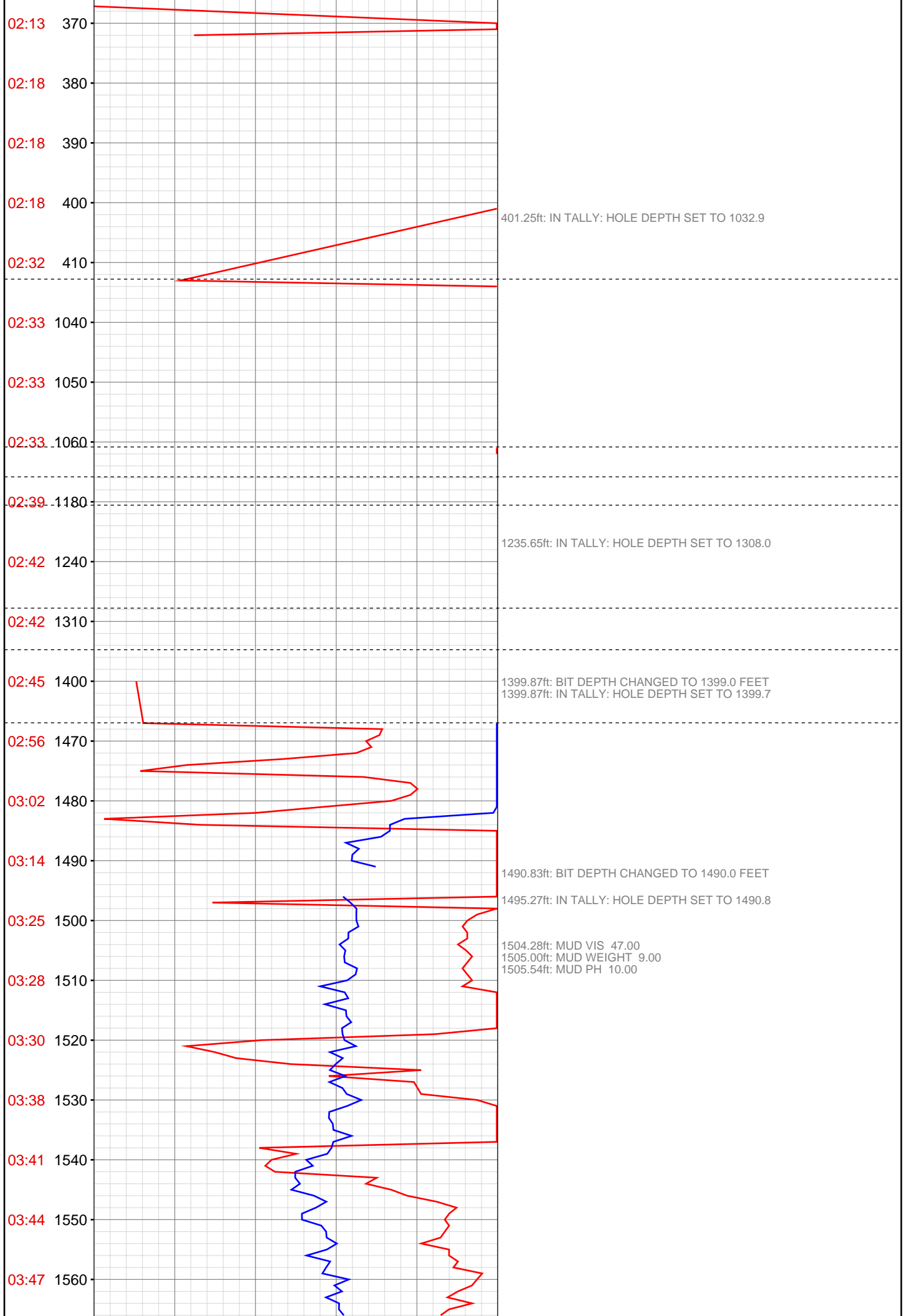
Mon Nov 26, 2012 09:59:08  
Well Dossier 1353340309  
Greg Veregin

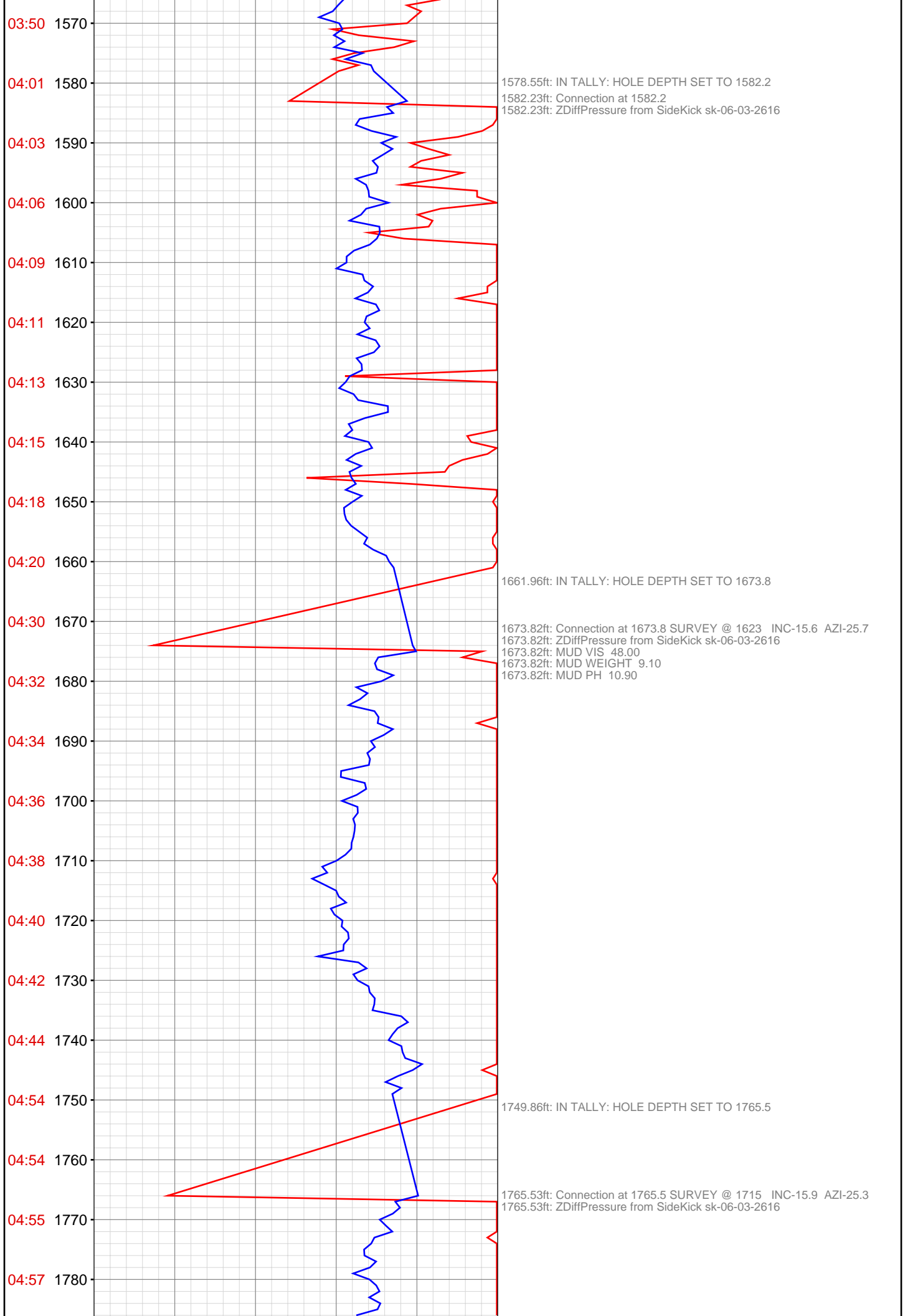
**OPERATOR:** EnCana Oil & Gas (USA), Inc.  
**WELL:** BENZEL FEE 25-3D  
**FIELD:**  
**LOCATION:** SEC 24 TWP 6S RNG 93W  
**COUNTRY:** USA  
**RIG:** Pat-UTI 308

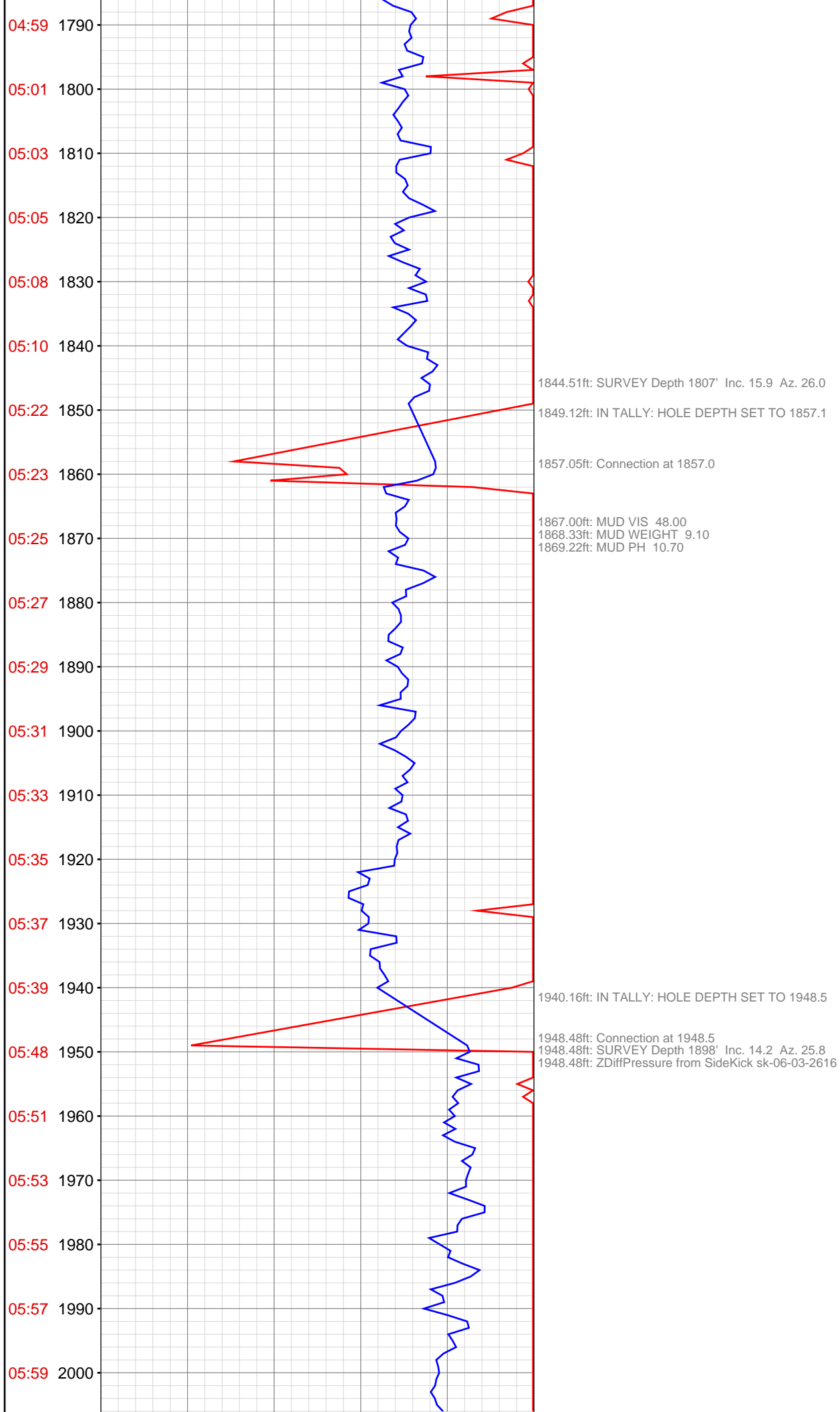
**CONTRACTOR:** Patterson-UTI Drilling Company  
**UNIQUE WELL ID:** 05-045-20873  
**SPUD DATE:** Nov 20, 2012 03:00  
**RELEASE DATE:** Nov 24, 2012 22:30

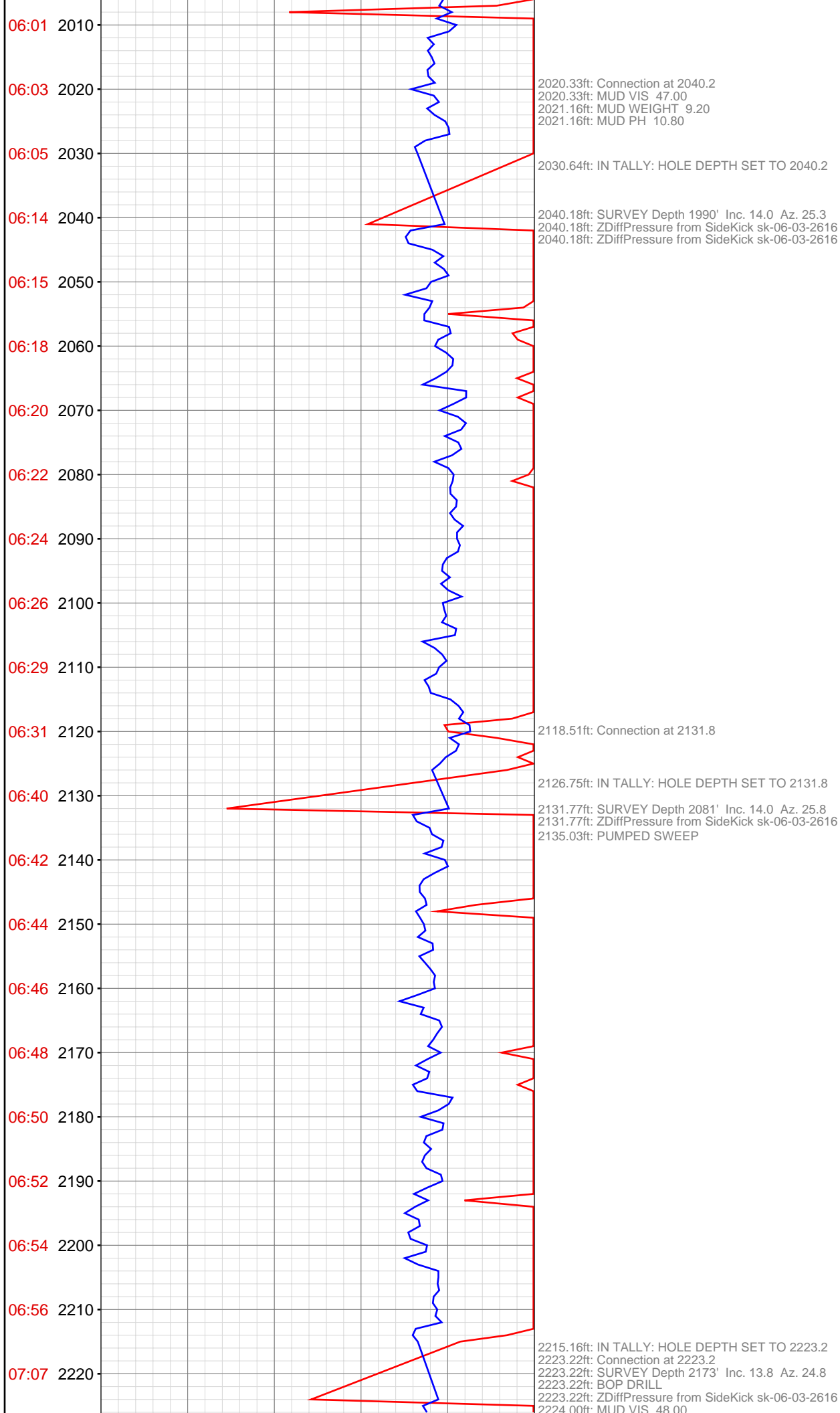


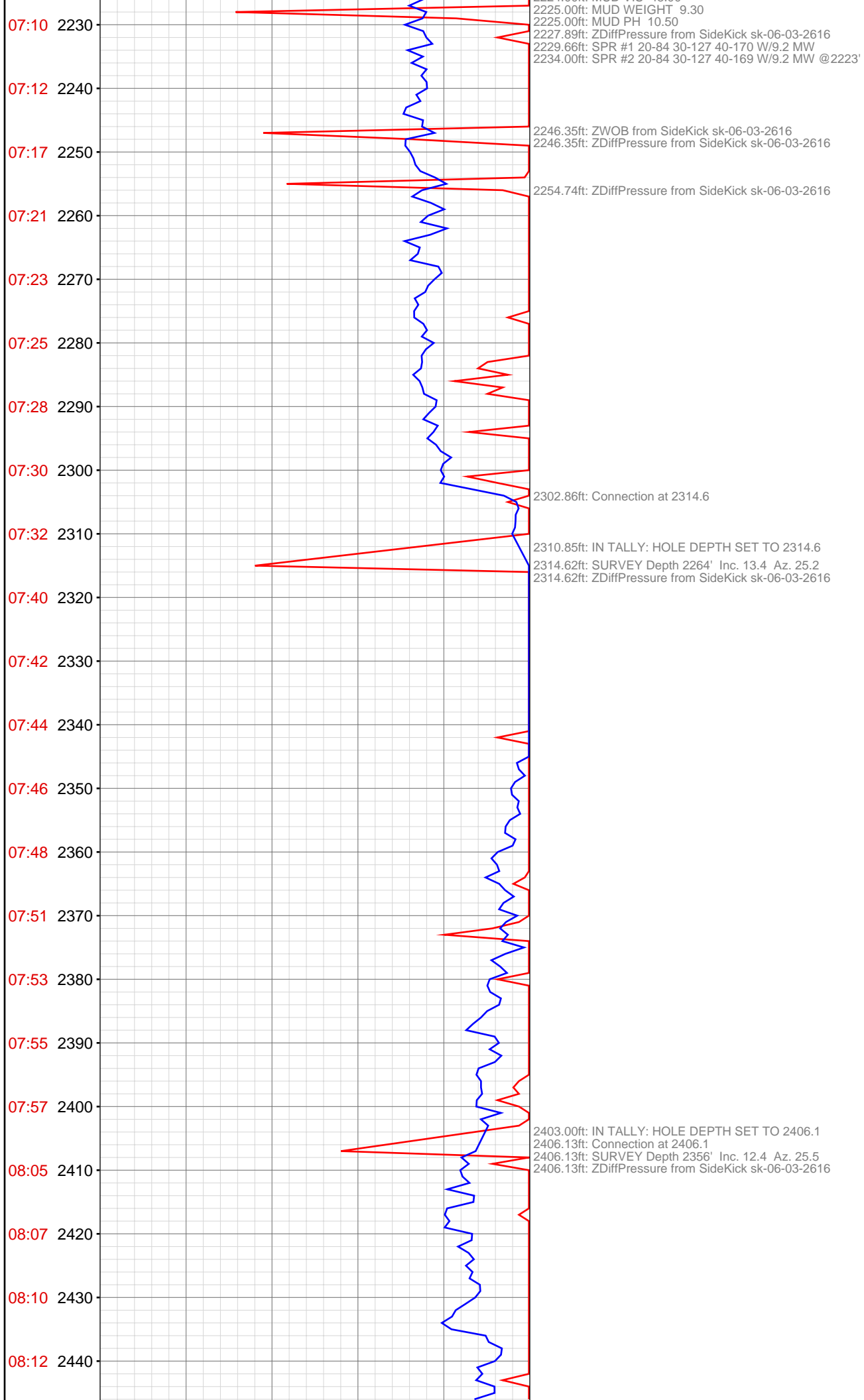


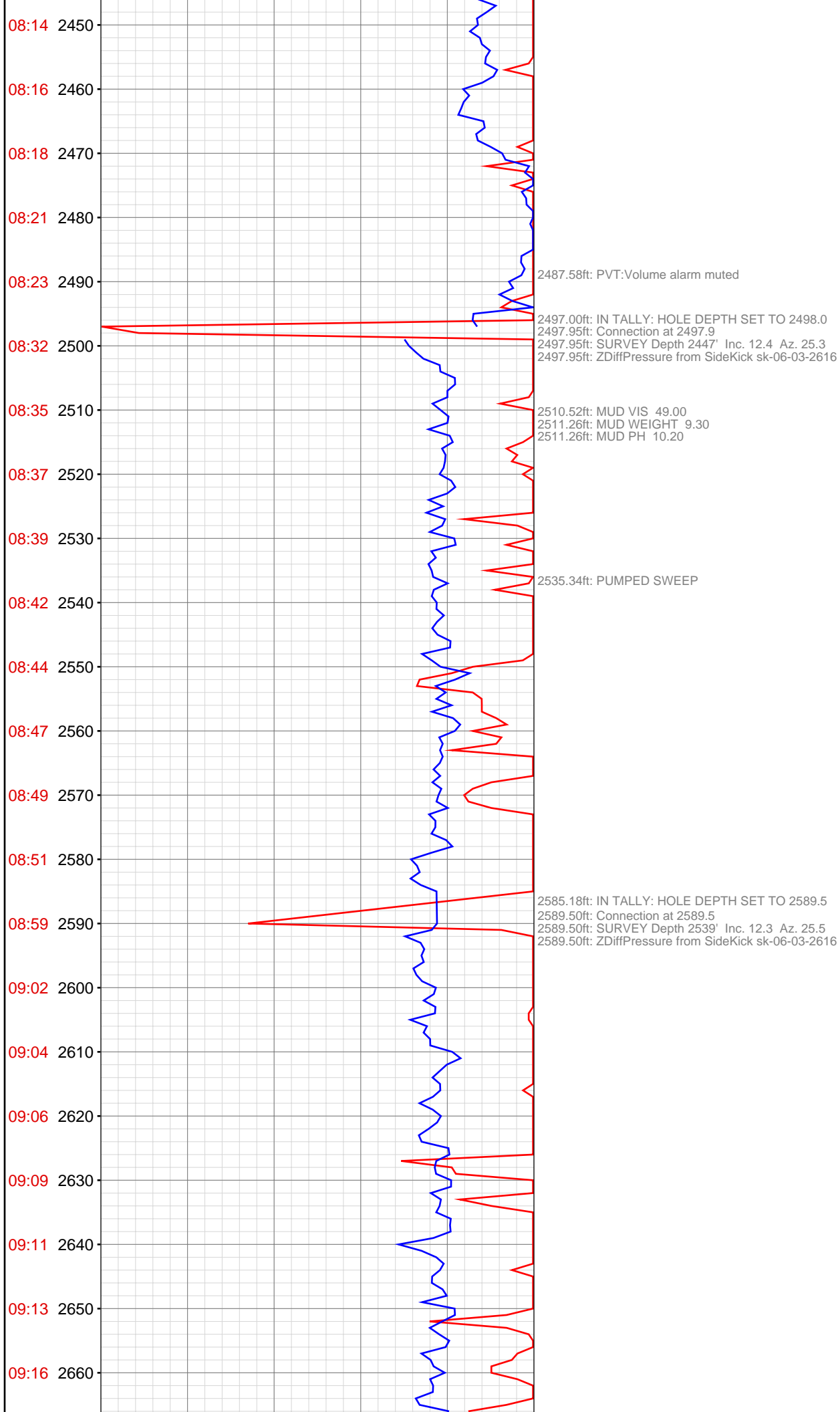




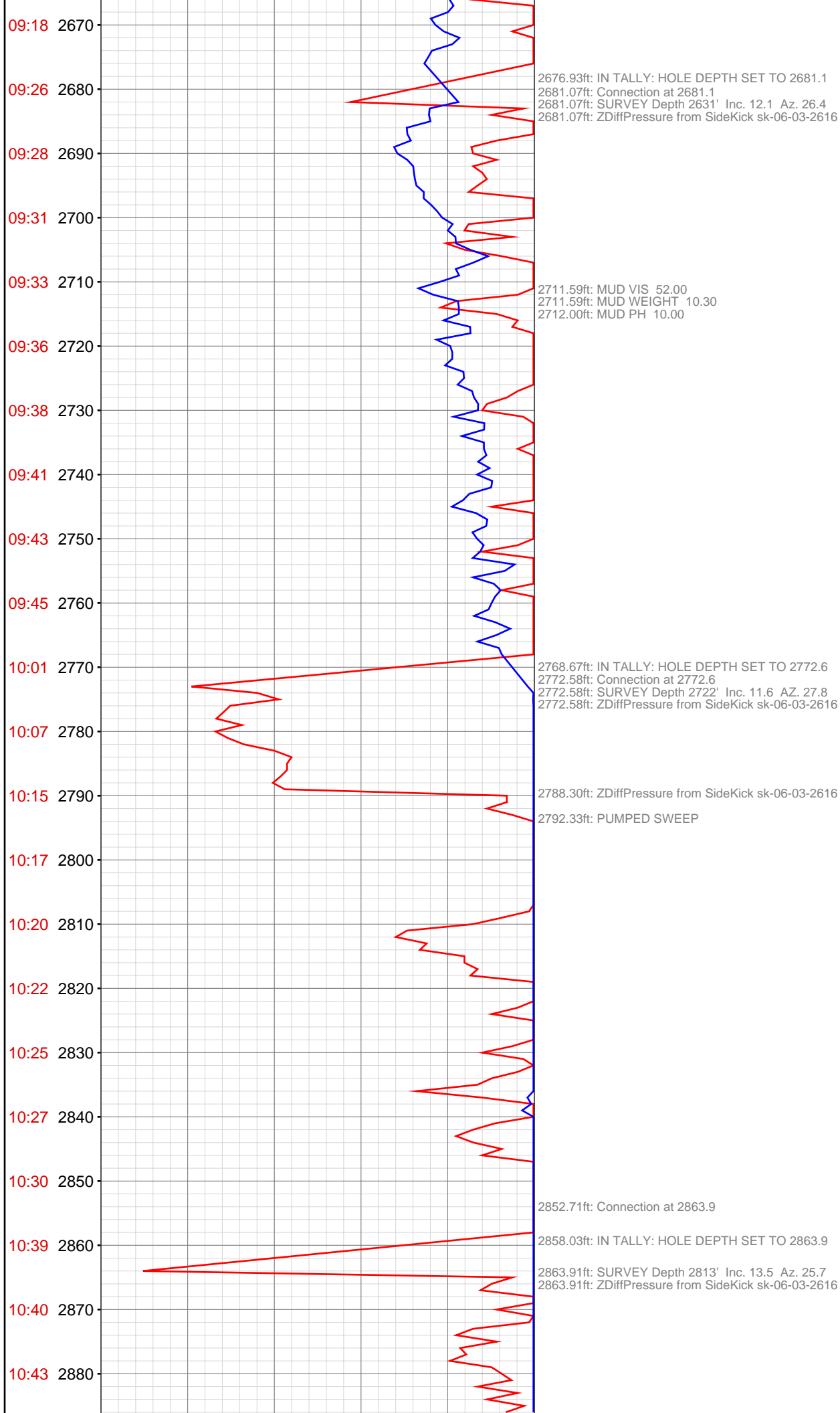


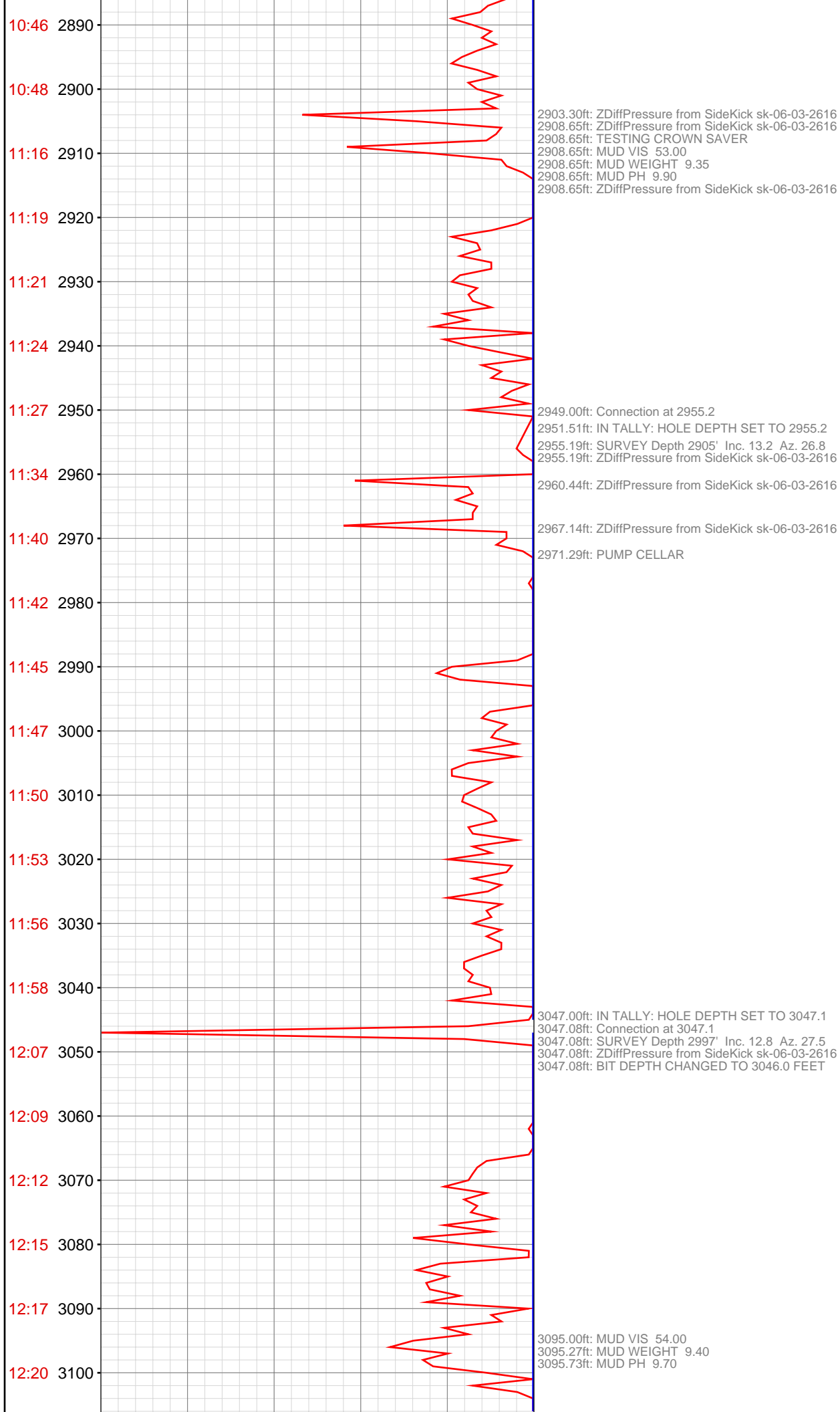


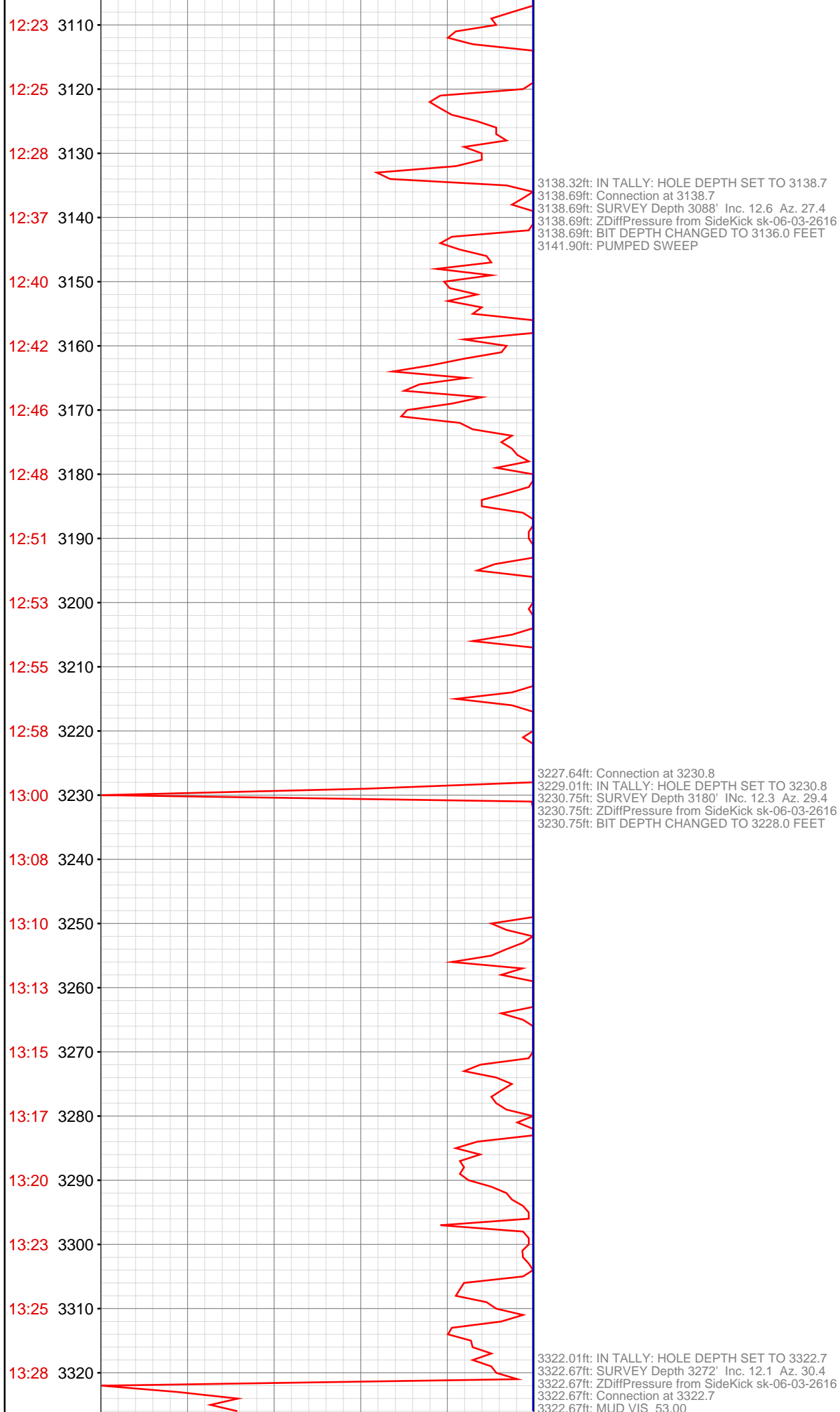


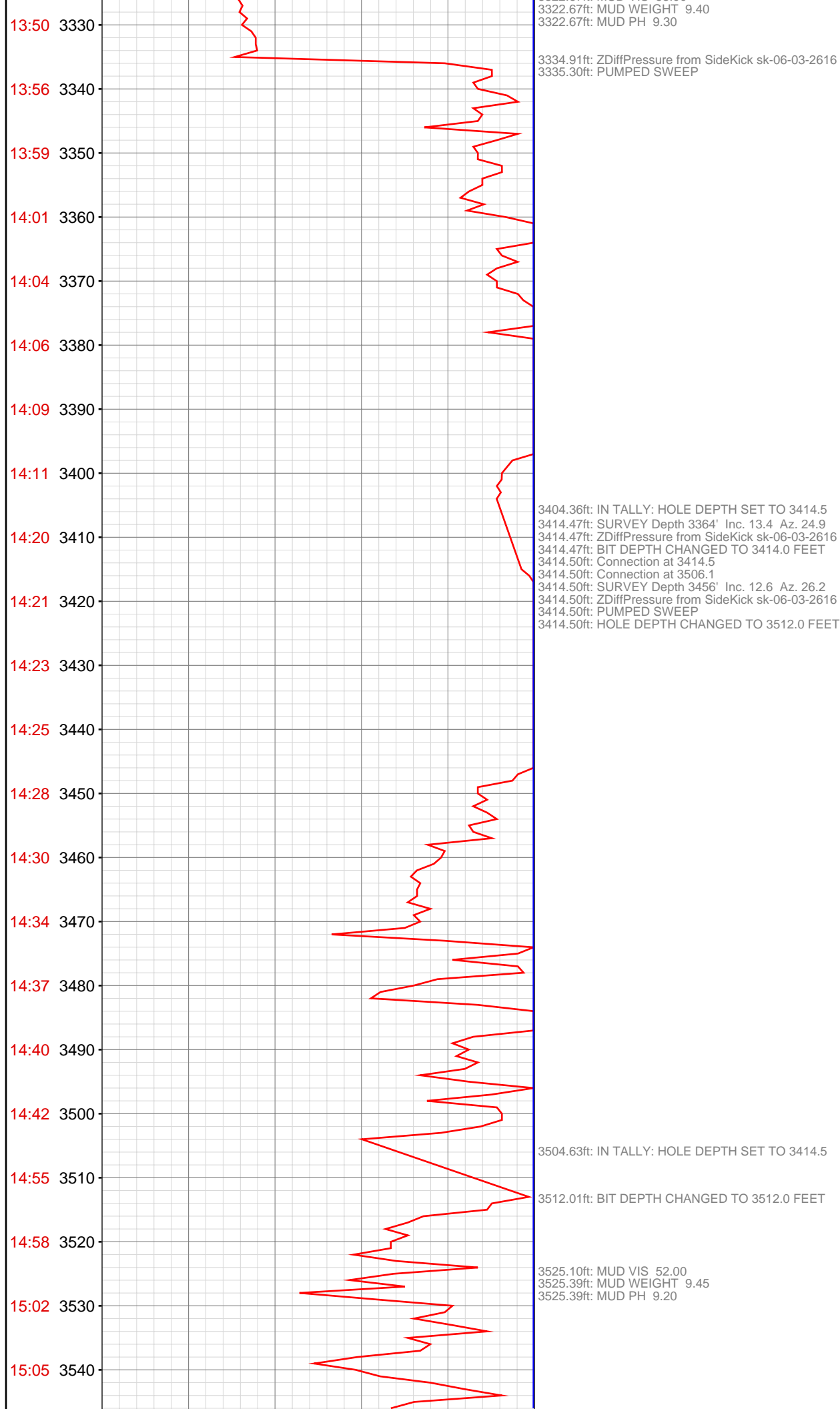


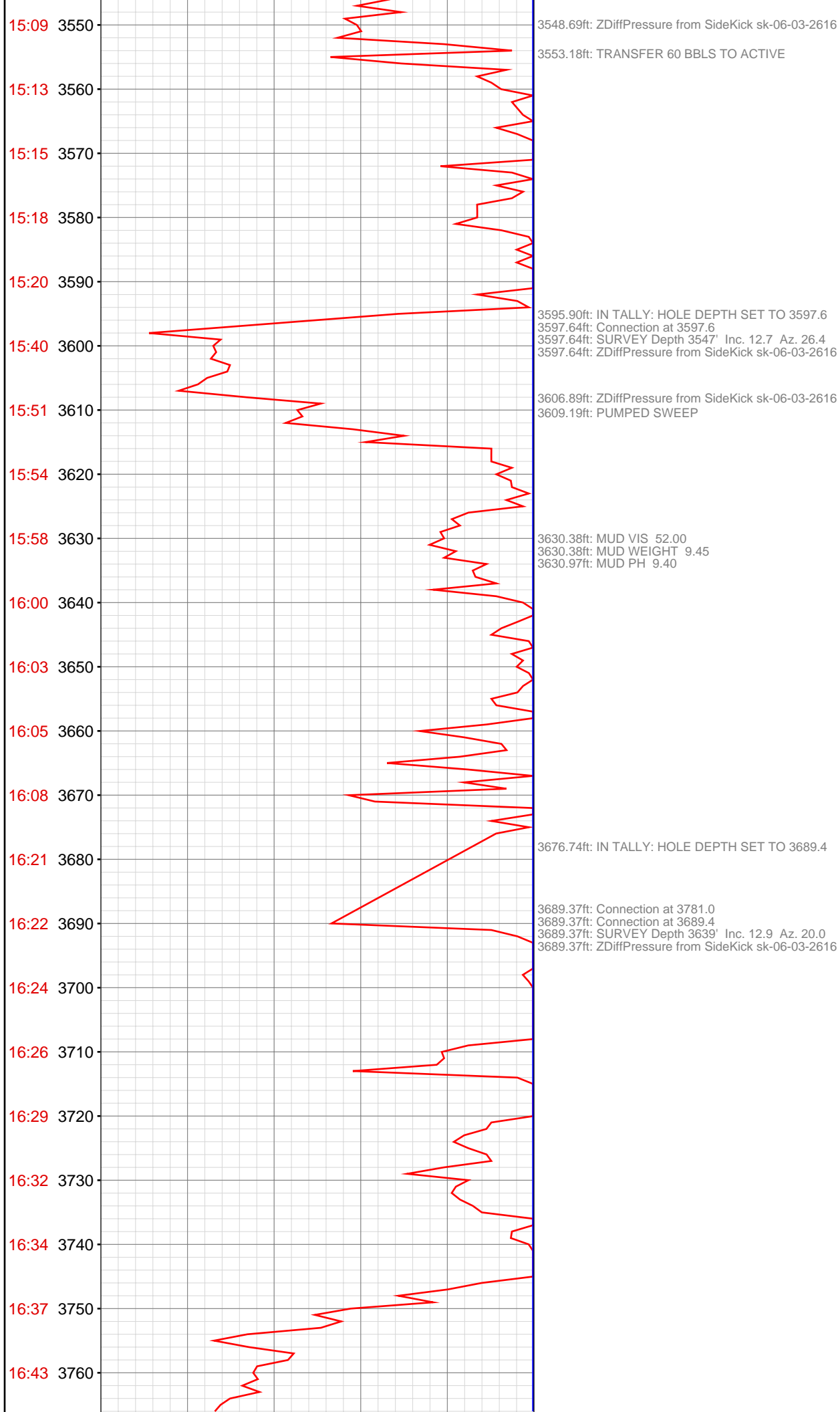


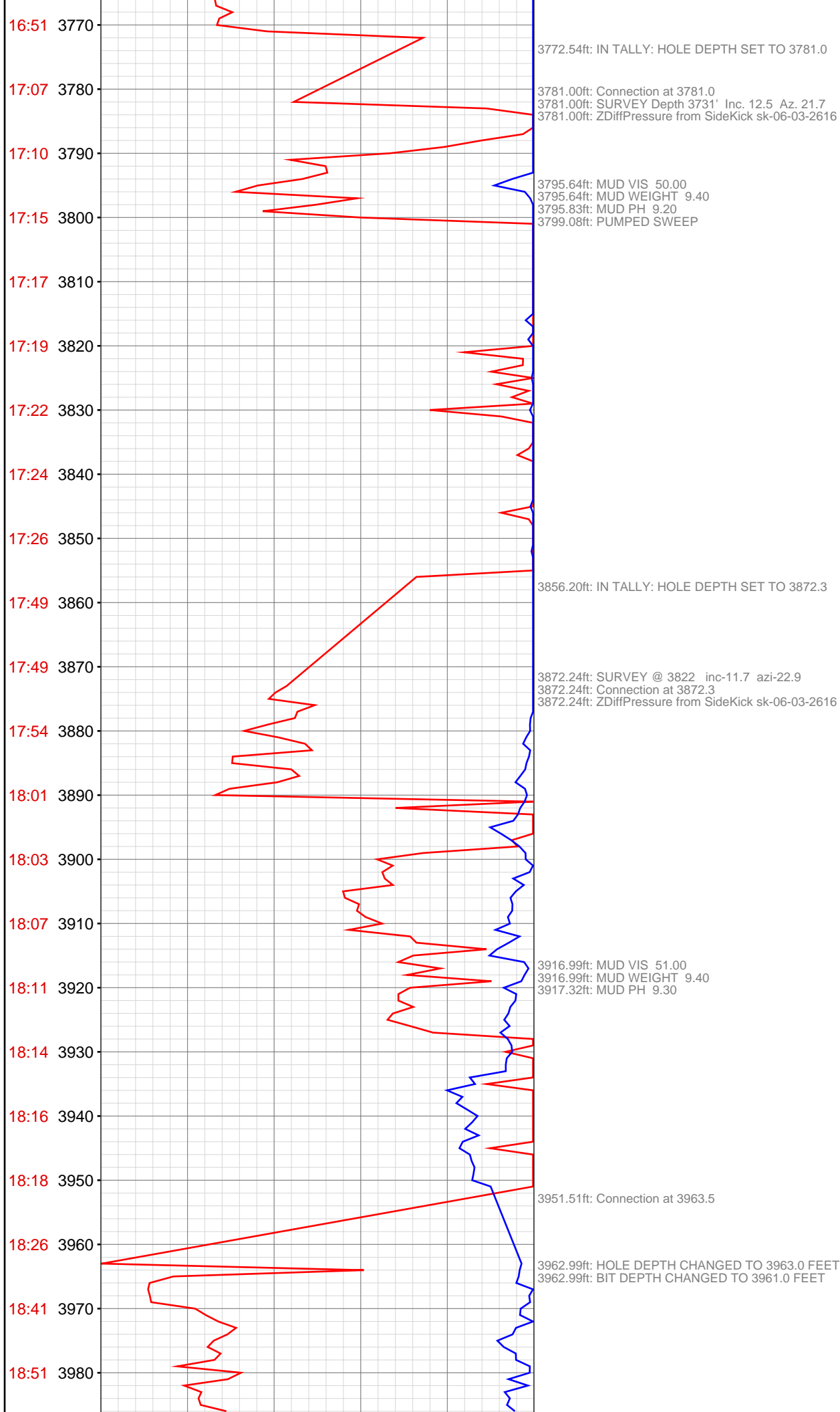


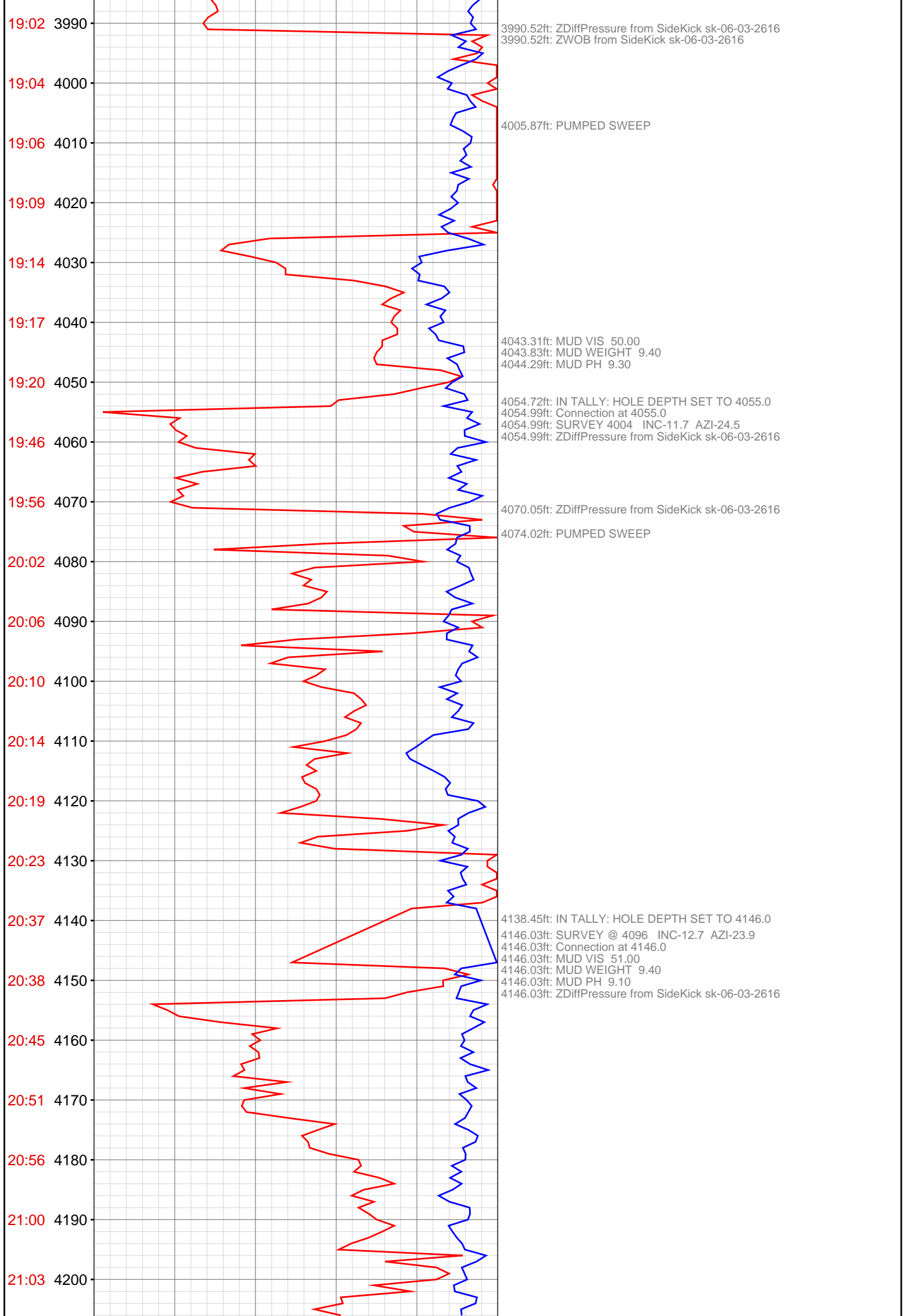


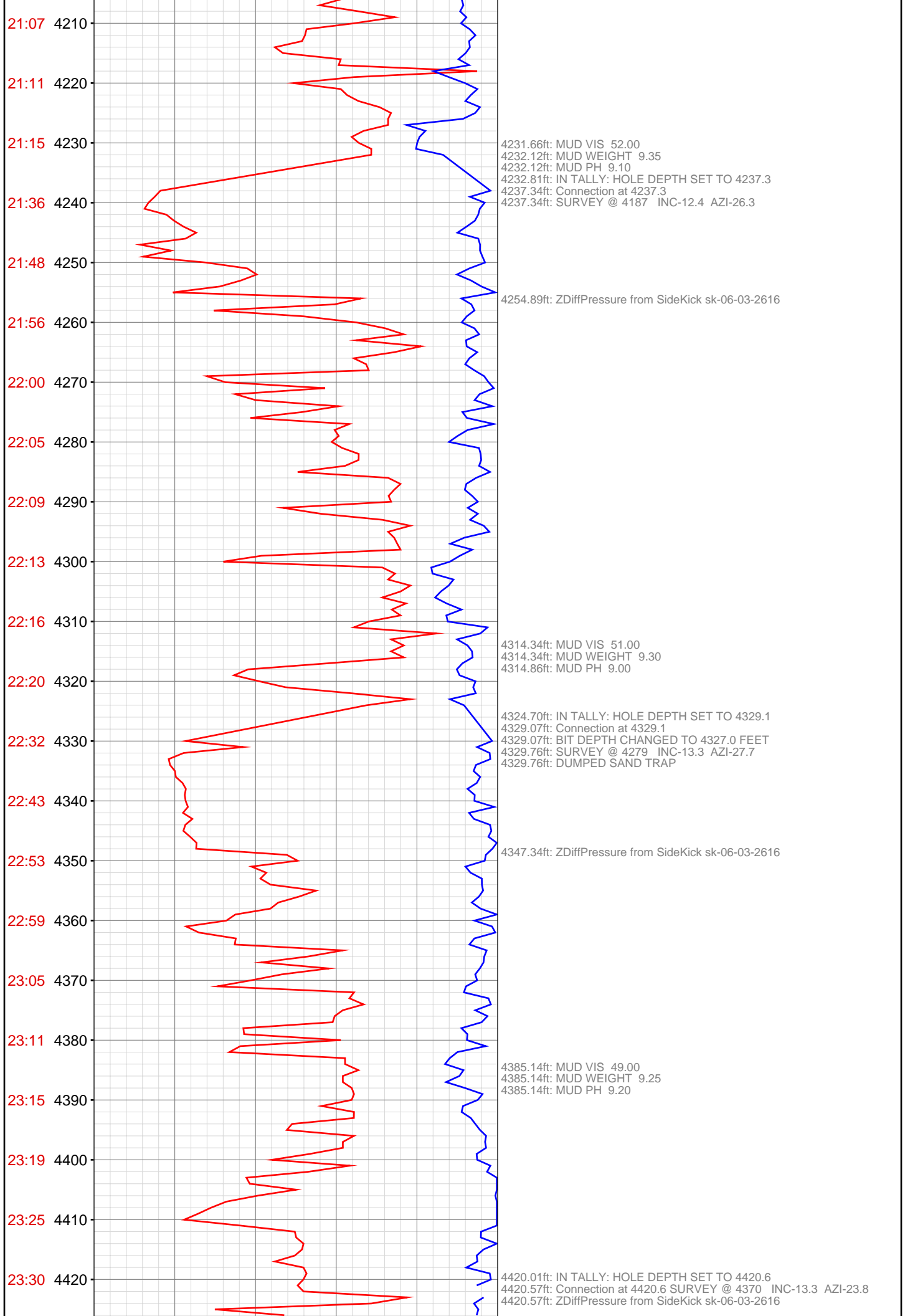




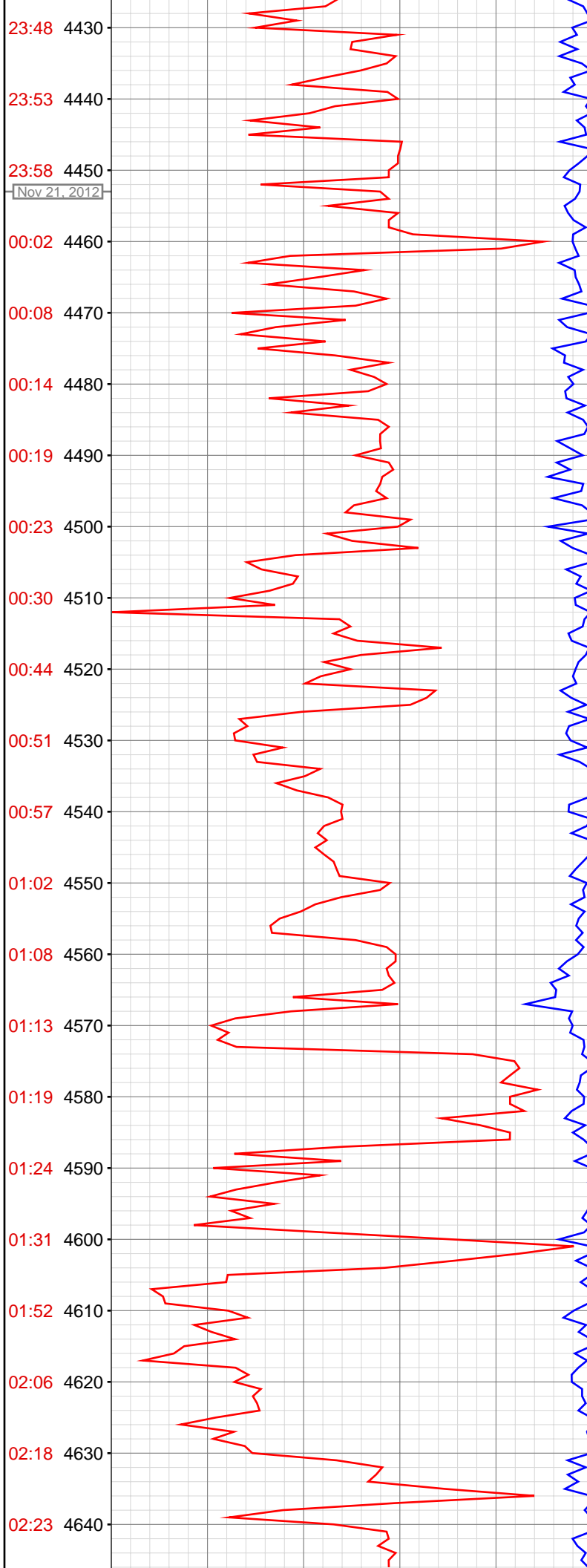












4495.01ft: MUD VIS 48.00  
4495.34ft: MUD WEIGHT 9.25  
4495.34ft: MUD PH 9.30

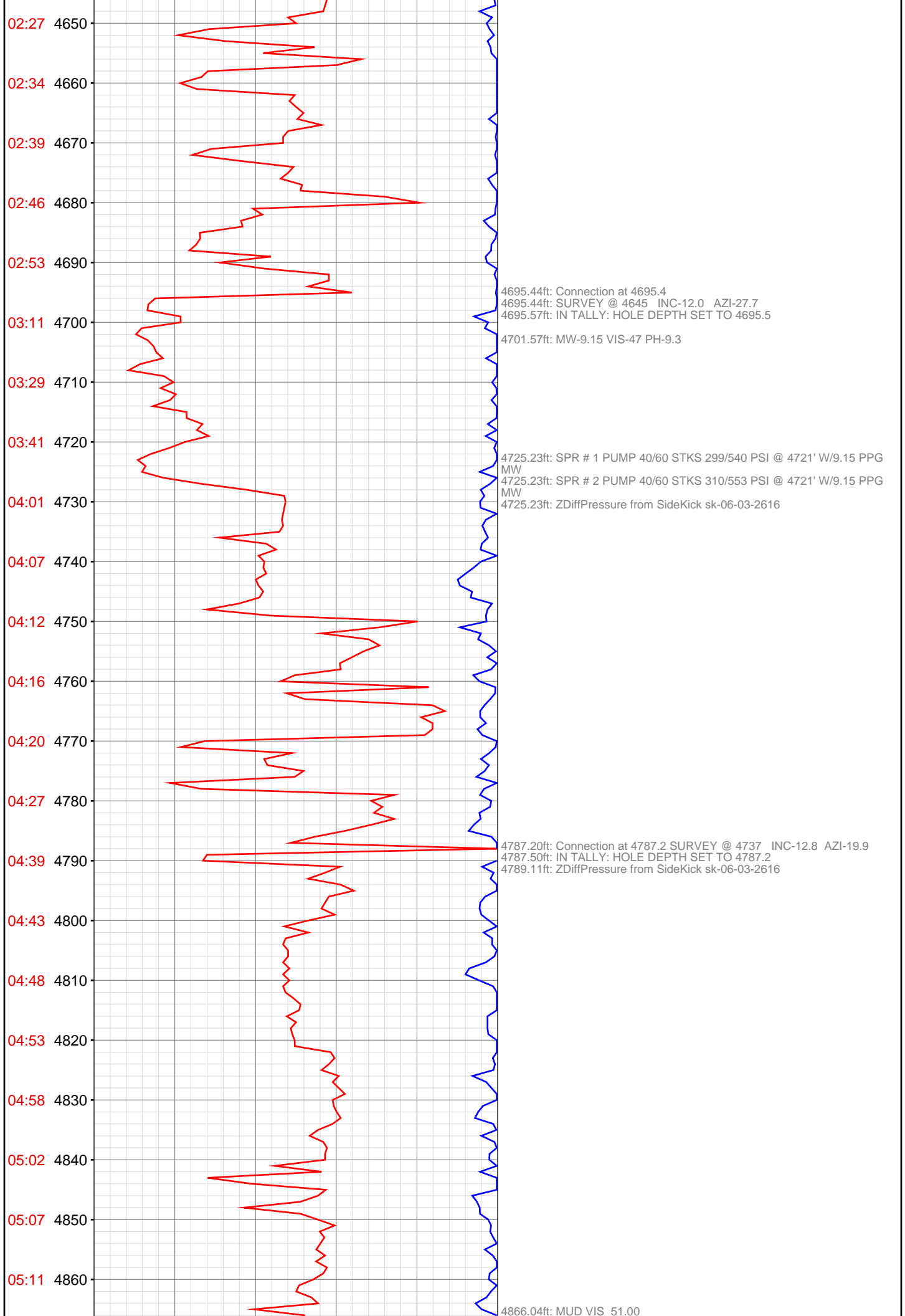
4512.01ft: IN TALLY: HOLE DEPTH SET TO 4512.3  
4512.27ft: Connection at 4512.3  
4512.27ft: ZDiffPressure from SideKick sk-06-03-2616  
4512.27ft: SURVEY @ 4462 INC-12.7 AZI-25.9

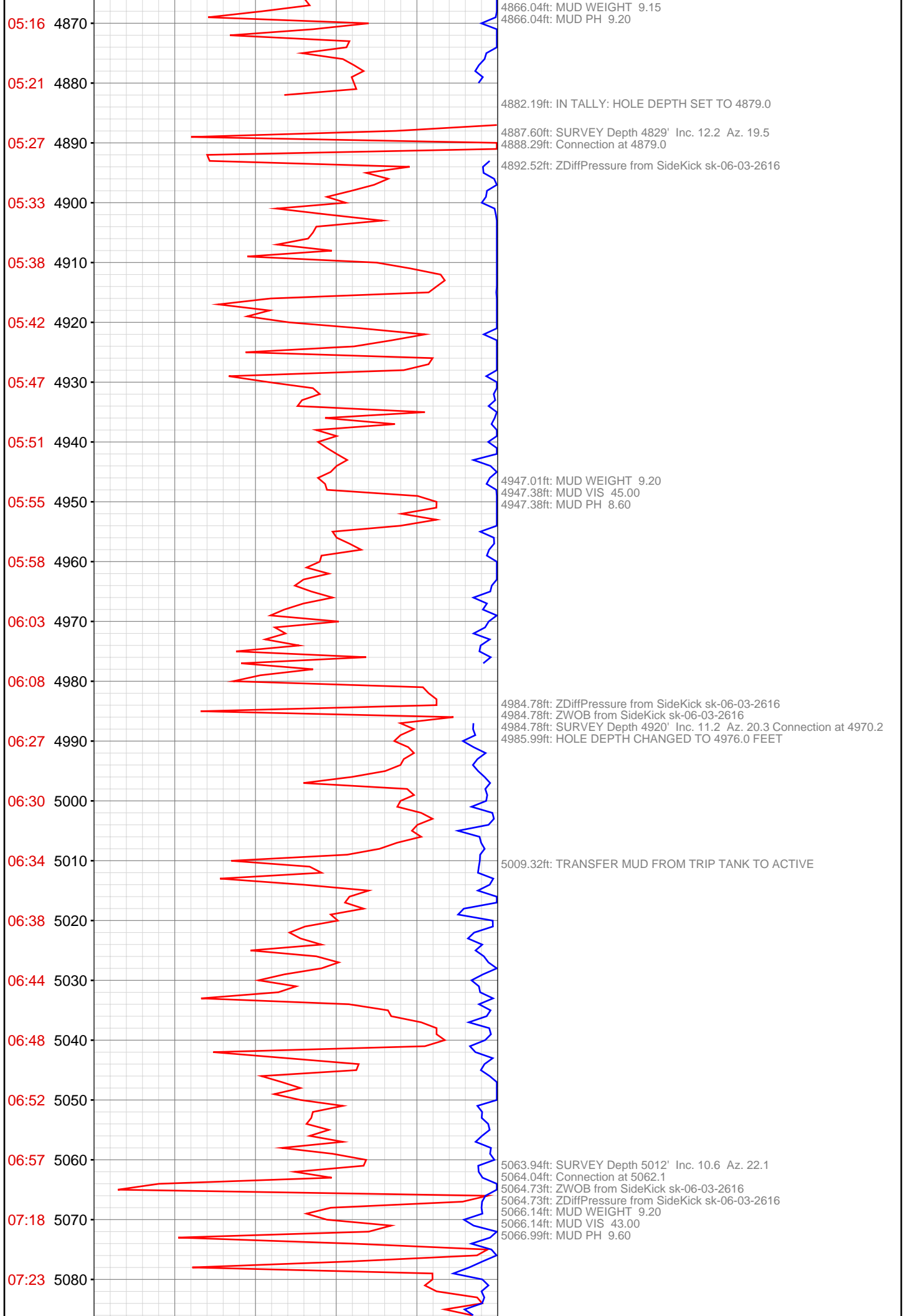
4519.00ft: PUMPED SWEEP

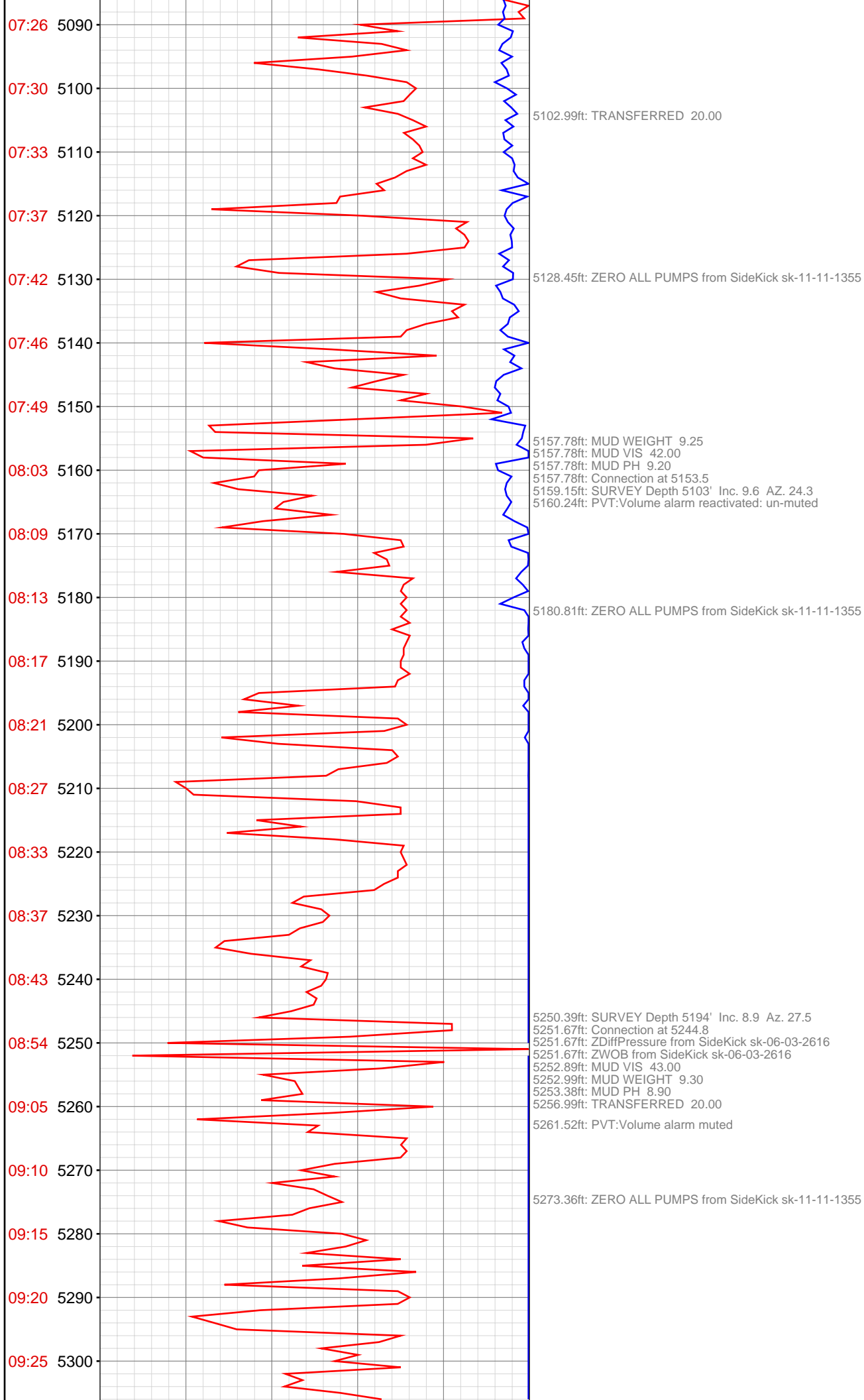
4555.84ft: MUD VIS 48.00  
4556.20ft: MUD WEIGHT 9.20  
4556.20ft: MUD PH 9.40

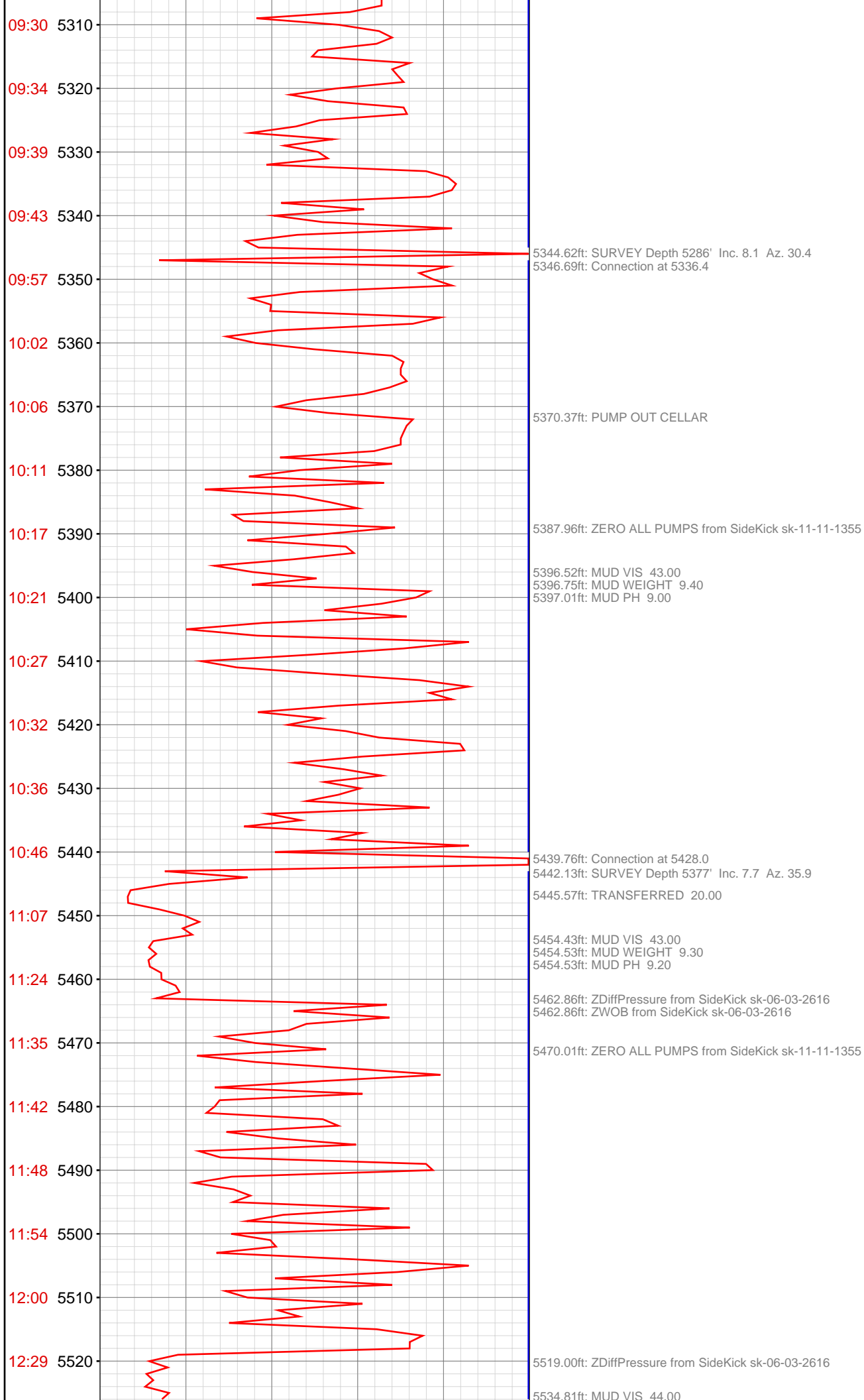
4603.84ft: SURVEY @ 4553 INC-11.9 AZI-26.8  
4603.84ft: Connection at 4603.9  
4604.00ft: IN TALLY: HOLE DEPTH SET TO 4603.9

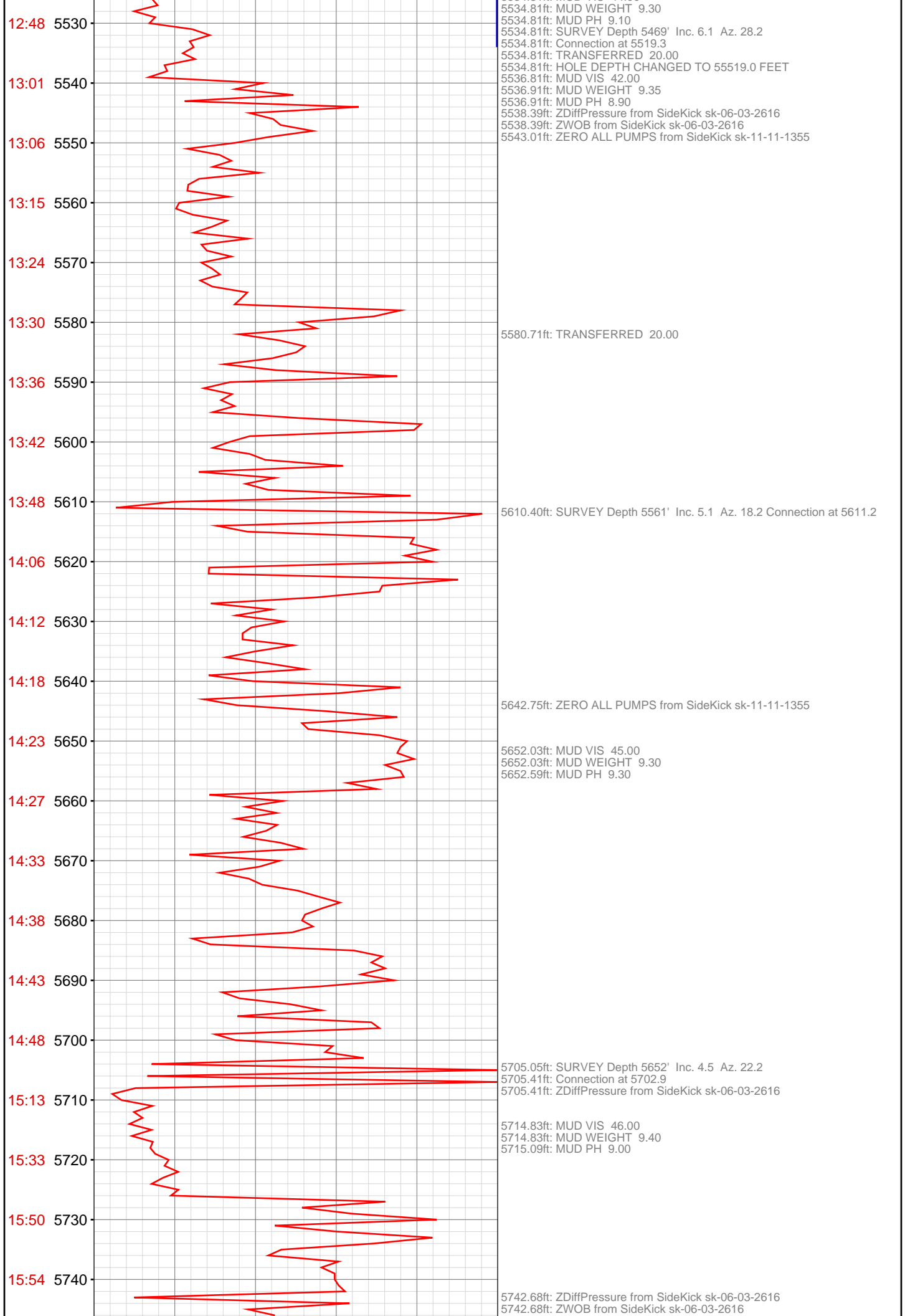
4625.98ft: ZDiffPressure from SideKick sk-06-03-2616  
4625.98ft: MUD VIS 47.00  
4625.98ft: MUD WEIGHT 9.15  
4625.98ft: MUD PH 9.40

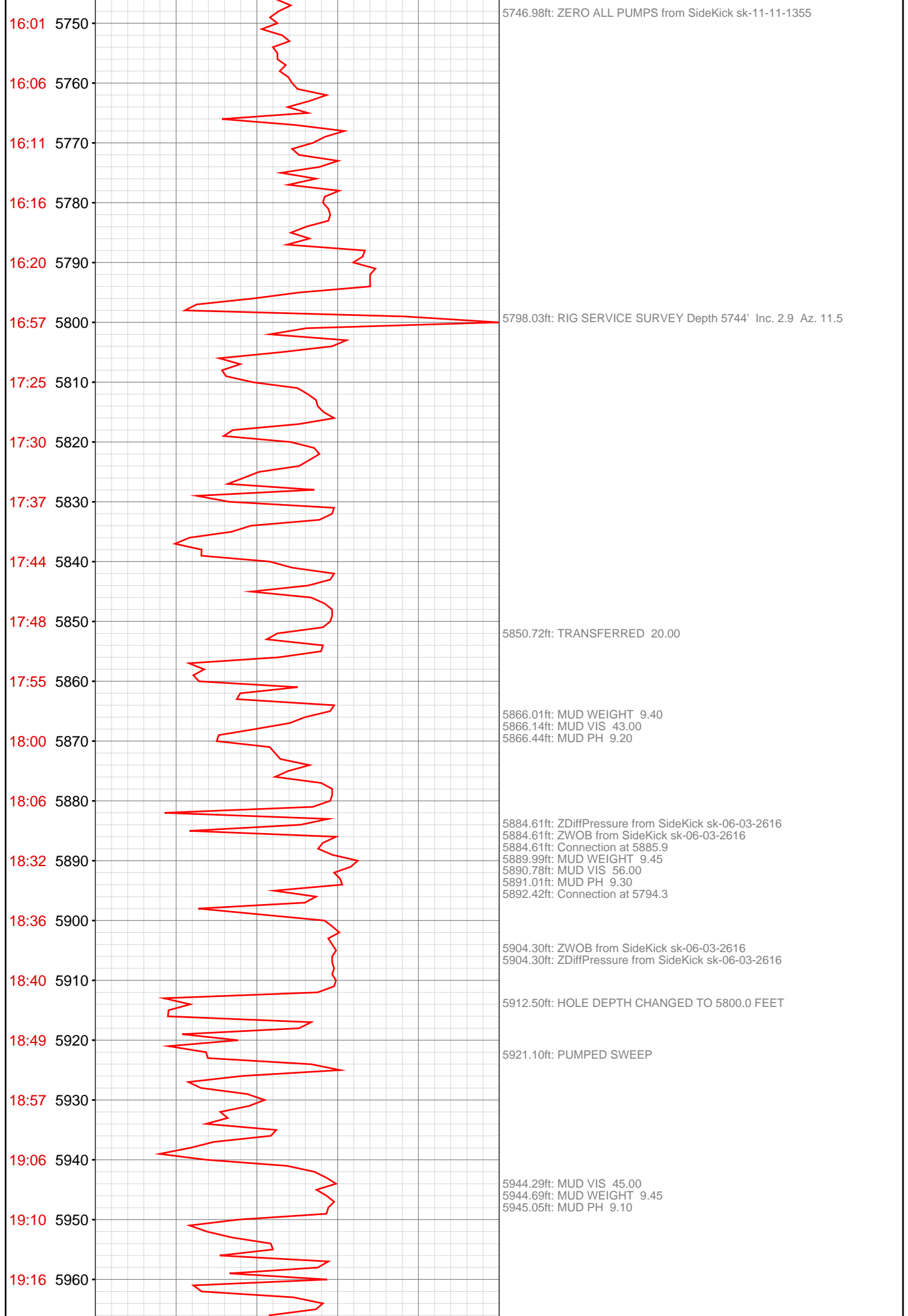












19:23 5970  
19:41 5980  
19:50 5990  
19:56 6000  
20:03 6010  
20:07 6020  
20:13 6030  
20:19 6040  
20:25 6050  
20:30 6060  
20:44 6070  
20:58 6080  
21:03 6090  
21:13 6100  
21:19 6110  
21:23 6120  
21:30 6130  
21:34 6140  
21:39 6150  
22:00 6160  
22:23 6170  
22:45 6180

5976.12ft: Connection at 5977.7  
5976.12ft: SURVEY @ 59207 inc-2.1 azi-18.8  
5976.12ft: ZWOB from SideKick sk-06-03-2616  
5976.12ft: ZDiffPressure from SideKick sk-06-03-2616  
5980.97ft: SURVEY Depth Correction 5927 INC-2.1 AZI-18.8

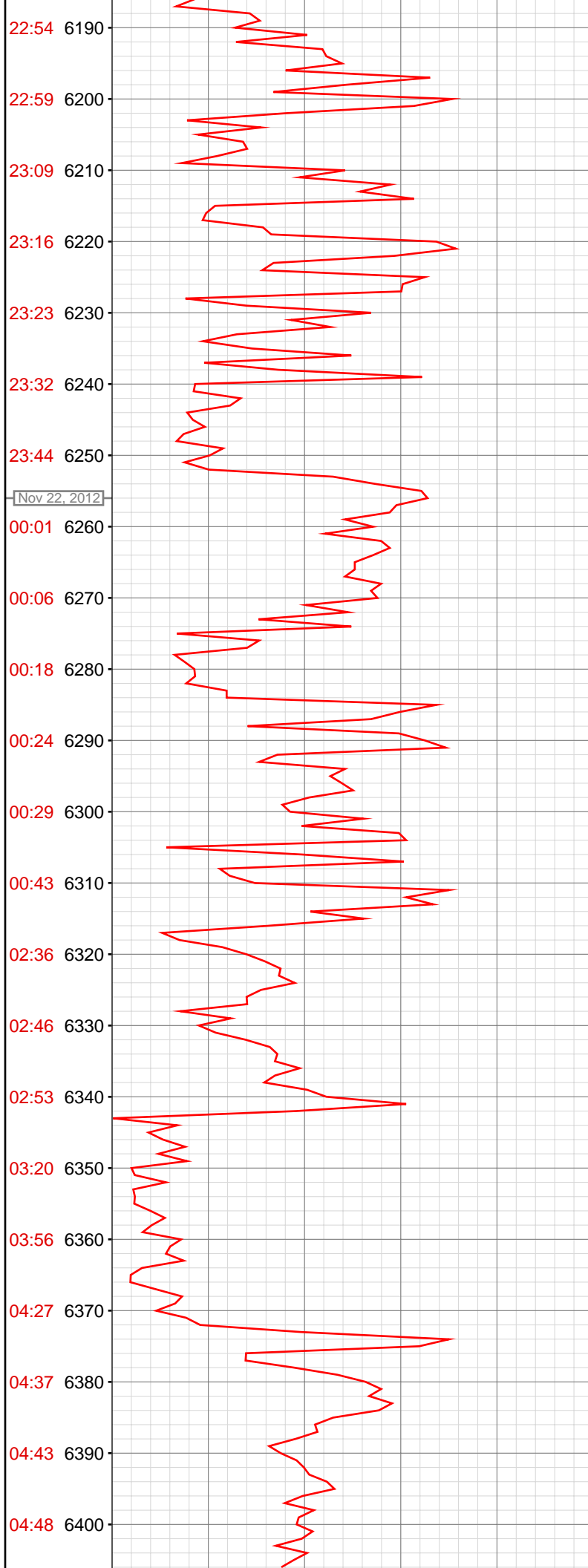
6013.22ft: MUD VIS 46.00  
6013.22ft: MUD WEIGHT 9.40  
6013.65ft: MUD PH 9.40

6069.75ft: SURVEY @ 6019 INC-1.5 AZI-38.0  
6069.91ft: Connection at 6069.5  
6070.34ft: ZDiffPressure from SideKick sk-06-03-2616  
6070.34ft: ZWOB from SideKick sk-06-03-2616  
6070.34ft: HOOK LOAD THRESHOLD RECALIBRATED TO 45  
6071.13ft: HOOK LOAD THRESHOLD RECALIBRATED TO 53  
6072.74ft: HOOKLOAD WAS RECALIBRATED  
6073.13ft: MUD WEIGHT 9.45  
6073.69ft: MUD VIS 45.00  
6074.02ft: HOOKLOAD WAS RECALIBRATED  
6074.15ft: MUD PH 9.50  
6074.70ft: PVT Horn Disabled  
6075.07ft: HOOKLOAD WAS RECALIBRATED  
6075.07ft: ZWOB from SideKick sk-06-03-2616  
6075.07ft: ZDiffPressure from SideKick sk-06-03-2616  
6075.07ft: IN TALLY: HOLE DEPTH SET TO 6069.5  
6076.25ft: PVT Horn Enabled

6159.71ft: Connection at 6161.1  
6159.71ft: SURVEY @ 6111 INC-1.3 AZI-77.4  
6165.78ft: MUD WEIGHT 9.45  
6165.88ft: MUD VIS 45.00  
6165.88ft: MUD PH 9.20

6174.05ft: ZDiffPressure from SideKick sk-06-03-2616  
6174.05ft: ZWOB from SideKick sk-06-03-2616  
6174.05ft: PUMPED SWEEP





6196.03ft: MUD WEIGHT 9.45  
6196.03ft: MUD VIS 45.00  
6196.52ft: MUD PH 9.10

6251.31ft: Connection at 6252.8  
6251.31ft: SURVEY @ 6252 INC-0.9 AZI-121.6  
6251.31ft: ZWOB from SideKick sk-06-03-2616  
6251.31ft: ZDiffPressure from SideKick sk-06-03-2616  
6251.31ft: PUMPED SWEEP

6266.14ft: MUD VIS 44.00  
6266.54ft: MUD WEIGHT 9.50  
6266.83ft: MUD PH 9.50

6316.14ft: PVT:Flow alarm reactivated: un-muted  
6316.14ft: PVT:Flow alarm muted  
6316.14ft: ZERO ALL PUMPS from SideKick sk-06-03-2616  
6316.14ft: MUD VIS 45.00  
6316.14ft: MUD WEIGHT 9.55  
6316.14ft: MUD PH 9.30  
6316.14ft: TRANSFER 20BBLS TO ACTIVE  
6316.14ft: TRANSF COMPLETE  
6316.14ft: ZDiffPressure from SideKick sk-06-03-2616

6343.01ft: IN TALLY: HOLE DEPTH SET TO 6343.7  
6343.73ft: MUD VIS 44.00  
6343.73ft: MUD WEIGHT 9.70  
6343.73ft: MUD PH 9.10  
6343.73ft: Connection at 6343.7  
6343.73ft: ZDiffPressure from SideKick sk-06-03-2616

6363.91ft: MUD WEIGHT 9.70  
6363.91ft: MUD VIS 43.00  
6363.91ft: MUD PH 9.60

6371.13ft: ZWOB from SideKick sk-06-03-2616  
6371.13ft: PUMPED SWEEP

