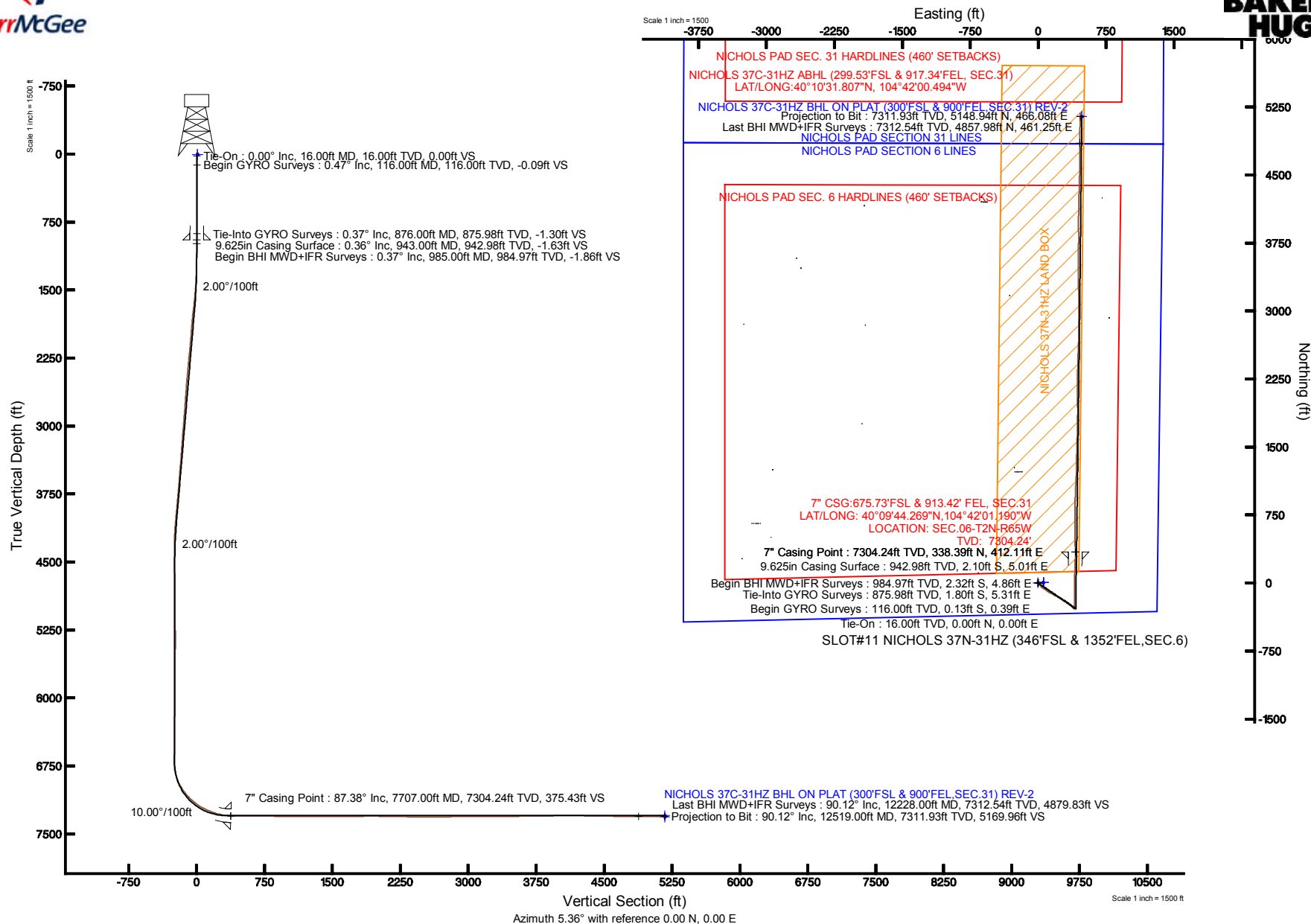


# KERR-MCGEE OIL & GAS ONSHORE LP

Location: COLORADO Slot: SLOT#10 NICHOLS 37C-31HZ (346°FSL & 1321°FEL, SEC.6)  
 Field: WELD COUNTY (KERR MCGEE) Well: NICHOLS 37C-31HZ  
 Facility: SEC.06-T2N-R65W Wellbore: NICHOLS 37C-31HZ PWB

Plot reference wellpath is NICHOLS 37C-31HZ (REV-B.0) PWP

True vertical depths are referenced to XTREME 24 (RKB)	Grid System: NAD83 / Lambert Colorado SP, Northern Zone (501), US feet
Measured depths are referenced to XTREME 24 (RKB)	North Reference: True north
XTREME 24 (RKB) to Mean Sea Level: 4941 feet	Scale: True distance
Mean Sea Level to Mud line (At Slot: SLOT#10 NICHOLS 37C-31HZ (346°FSL & 1321°FEL, SEC.6)): 0 feet	Depths are in feet
Coordinates are in feet referenced to Slot	Created by: preacin on 3/19/2013





# Actual Wellpath Report

NICHOLS 37C-31HZ AWP

Page 1 of 7



REFERENCE WELLPATH IDENTIFICATION			
Operator	KERR-MCGEE OIL & GAS ONSHORE LP	Slot	SLOT#10 NICHOLS 37C-31HZ (346'FSL & 1321'FEL,SEC.6)
Area	COLORADO	Well	NICHOLS 37C-31HZ
Field	WELD COUNTY (KERR MCGEE)	Wellbore	NICHOLS 37C-31HZ AWB
Facility	SEC.06-T2N-R65W		

REPORT SETUP INFORMATION			
Projection System	NAD83 / Lambert Colorado SP, Northern Zone (501), US feet	Software System	WellArchitect® 3.0.2
North Reference	True	User	Precain
Scale	0.999958	Report Generated	3/19/2013 at 10:58:56 AM
Convergence at slot	0.52° East	Database/Source file	WellArchitectDB/NICHOLS_37C-31HZ_AWB.xml

WELLPATH LOCATION						
	Local coordinates		Grid coordinates		Geographic coordinates	
	North[ft]	East[ft]	Easting[US ft]	Northing[US ft]	Latitude	Longitude
Slot Location	-4205.79	563.76	3223085.06	1302633.58	40°09'40.925"N	104°42'06.498"W
Facility Reference Pt			3222483.59	1306833.95	40°10'22.487"N	104°42'13.759"W
Field Reference Pt			3197771.84	1268891.29	40°04'09.600"N	104°47'36.000"W

WELLPATH DATUM			
Calculation method	Minimum curvature	XTREME 24 (RKB) to Facility Vertical Datum	4941.00ft
Horizontal Reference Pt	Slot	XTREME 24 (RKB) to Mean Sea Level	4941.00ft
Vertical Reference Pt	XTREME 24 (RKB)	XTREME 24 (RKB) to Mud Line at Slot (SLOT#10 NICHOLS 37C-31HZ (346'FSL & 1321'FEL,SEC.6))	4941.00ft
MD Reference Pt	XTREME 24 (RKB)	Section Origin	N 0.00, E 0.00 ft
Field Vertical Reference	Mean Sea Level	Section Azimuth	5.36°



# Actual Wellpath Report

NICHOLS 37C-31HZ AWP

Page 2 of 7



## REFERENCE WELLPATH IDENTIFICATION

Operator	KERR-MCGEE OIL & GAS ONSHORE LP	Slot	SLOT#10 NICHOLS 37C-31HZ (346'FSL & 1321'FEL,SEC.6)
Area	COLORADO	Well	NICHOLS 37C-31HZ
Field	WELD COUNTY (KERR MCGEE)	Wellbore	NICHOLS 37C-31HZ AWB
Facility	SEC.06-T2N-R65W		

## WELLPATH DATA (155 stations) † = interpolated/extrapolated station

MD [ft]	Inclination [°]	Azimuth [°]	TVD [ft]	Vert Sect [ft]	North [ft]	East [ft]	Latitude	Longitude	DLS [°/100ft]	Comments
0.00†	0.000	107.900	0.00	0.00	0.00	0.00	40°09'40.925"N	104°42'06.498"W	0.00	
16.00	0.000	107.900	16.00	0.00	0.00	0.00	40°09'40.925"N	104°42'06.498"W	0.00	Tie-On
116.00	0.470	107.900	116.00	-0.09	-0.13	0.39	40°09'40.924"N	104°42'06.493"W	0.47	Begin GYRO Surveys
216.00	0.370	106.210	216.00	-0.24	-0.34	1.09	40°09'40.922"N	104°42'06.484"W	0.10	
316.00	0.470	78.340	315.99	-0.18	-0.35	1.80	40°09'40.922"N	104°42'06.475"W	0.22	
416.00	0.420	79.140	415.99	0.04	-0.20	2.56	40°09'40.923"N	104°42'06.465"W	0.05	
516.00	0.360	142.340	515.99	-0.08	-0.38	3.12	40°09'40.921"N	104°42'06.458"W	0.41	
616.00	0.610	114.190	615.99	-0.49	-0.84	3.79	40°09'40.917"N	104°42'06.449"W	0.34	
716.00	0.580	122.110	715.98	-0.89	-1.33	4.71	40°09'40.912"N	104°42'06.437"W	0.09	
816.00	0.240	103.730	815.98	-1.14	-1.65	5.34	40°09'40.909"N	104°42'06.429"W	0.36	
876.00	0.370	231.360	875.98	-1.30	-1.80	5.31	40°09'40.907"N	104°42'06.430"W	0.92	Tie-Into GYRO Surveys
985.00	0.370	210.140	984.97	-1.86	-2.32	4.86	40°09'40.902"N	104°42'06.435"W	0.13	Begin BHI MWD+IFR Surveys
1078.00	0.350	208.010	1077.97	-2.40	-2.84	4.57	40°09'40.897"N	104°42'06.439"W	0.03	
1172.00	1.650	153.370	1171.96	-3.81	-4.30	5.05	40°09'40.883"N	104°42'06.433"W	1.57	
1265.00	2.720	119.120	1264.89	-5.83	-6.57	7.57	40°09'40.860"N	104°42'06.400"W	1.77	
1359.00	4.000	119.740	1358.73	-8.08	-9.28	12.37	40°09'40.833"N	104°42'06.339"W	1.36	
1453.00	5.120	140.080	1452.44	-12.39	-14.13	17.91	40°09'40.785"N	104°42'06.267"W	2.07	
1551.00	6.760	146.940	1549.91	-19.99	-22.31	23.86	40°09'40.704"N	104°42'06.191"W	1.82	
1645.00	8.520	149.060	1643.07	-29.93	-32.92	30.46	40°09'40.600"N	104°42'06.106"W	1.90	
1739.00	9.800	140.340	1735.87	-41.20	-45.06	39.15	40°09'40.480"N	104°42'05.994"W	2.01	
1833.00	9.400	126.470	1828.57	-50.82	-55.78	50.43	40°09'40.374"N	104°42'05.848"W	2.49	
1928.00	10.460	120.170	1922.15	-58.45	-64.72	64.12	40°09'40.285"N	104°42'05.672"W	1.60	
2022.00	10.180	119.310	2014.63	-65.40	-73.08	78.74	40°09'40.203"N	104°42'05.484"W	0.34	
2116.00	10.020	125.450	2107.17	-72.87	-81.89	92.65	40°09'40.116"N	104°42'05.305"W	1.16	
2210.00	11.780	126.870	2199.47	-81.99	-92.39	106.99	40°09'40.012"N	104°42'05.120"W	1.89	
2305.00	12.330	121.970	2292.38	-91.60	-103.58	123.35	40°09'39.901"N	104°42'04.909"W	1.22	
2399.00	11.940	119.400	2384.28	-100.05	-113.67	140.34	40°09'39.802"N	104°42'04.690"W	0.71	
2494.00	11.900	120.160	2477.23	-108.16	-123.41	157.37	40°09'39.705"N	104°42'04.471"W	0.17	
2588.00	11.570	118.980	2569.27	-116.00	-132.85	173.99	40°09'39.612"N	104°42'04.257"W	0.43	
2682.00	11.230	117.940	2661.41	-123.29	-141.70	190.33	40°09'39.525"N	104°42'04.047"W	0.42	
2776.00	10.400	116.570	2753.74	-129.88	-149.79	206.00	40°09'39.445"N	104°42'03.845"W	0.92	
2870.00	10.960	117.090	2846.11	-136.25	-157.65	221.54	40°09'39.367"N	104°42'03.645"W	0.60	
2965.00	10.820	122.360	2939.41	-143.65	-166.54	237.12	40°09'39.279"N	104°42'03.444"W	1.06	
3059.00	10.610	120.210	3031.77	-151.29	-175.61	252.05	40°09'39.190"N	104°42'03.252"W	0.48	
3153.00	10.440	119.970	3124.19	-158.47	-184.22	266.90	40°09'39.104"N	104°42'03.060"W	0.19	
3248.00	10.220	119.370	3217.65	-165.48	-192.66	281.71	40°09'39.021"N	104°42'02.870"W	0.26	
3342.00	10.330	117.830	3310.14	-172.10	-200.68	296.43	40°09'38.942"N	104°42'02.680"W	0.31	
3431.00	9.900	124.050	3397.76	-178.82	-208.69	309.82	40°09'38.863"N	104°42'02.508"W	1.32	
3516.00	8.900	124.830	3481.61	-185.56	-216.54	321.27	40°09'38.785"N	104°42'02.360"W	1.19	
3601.00	8.890	127.770	3565.59	-192.31	-224.32	331.86	40°09'38.708"N	104°42'02.224"W	0.53	
3686.00	9.010	130.450	3649.56	-199.66	-232.66	342.12	40°09'38.626"N	104°42'02.092"W	0.51	
3772.00	9.320	128.350	3734.46	-207.32	-241.35	352.71	40°09'38.540"N	104°42'01.955"W	0.53	
3857.00	8.360	132.230	3818.45	-214.78	-249.77	362.68	40°09'38.457"N	104°42'01.827"W	1.33	
3942.00	8.220	132.300	3902.56	-222.14	-258.01	371.75	40°09'38.375"N	104°42'01.710"W	0.17	
4027.00	7.630	136.760	3986.75	-229.52	-266.21	380.11	40°09'38.294"N	104°42'01.602"W	1.00	



# Actual Wellpath Report

NICHOLS 37C-31HZ AWP

Page 3 of 7



## REFERENCE WELLPATH IDENTIFICATION

Operator	KERR-MCGEE OIL & GAS ONSHORE LP	Slot	SLOT#10 NICHOLS 37C-31HZ (346'FSL & 1321'FEL,SEC.6)
Area	COLORADO	Well	NICHOLS 37C-31HZ
Field	WELD COUNTY (KERR MCGEE)	Wellbore	NICHOLS 37C-31HZ AWB
Facility	SEC.06-T2N-R65W		

## WELLPATH DATA (155 stations)

MD [ft]	Inclination [°]	Azimuth [°]	TVD [ft]	Vert Sect [ft]	North [ft]	East [ft]	Latitude	Longitude	DLS [°/100ft]	Comments
4112.00	7.400	134.700	4071.02	-236.72	-274.17	387.87	40°09'38.216"N	104°42'01.502"W	0.42	
4198.00	6.050	132.480	4156.43	-242.97	-281.13	395.14	40°09'38.147"N	104°42'01.409"W	1.60	
4283.00	3.580	125.270	4241.12	-246.99	-285.69	400.62	40°09'38.102"N	104°42'01.338"W	2.99	
4368.00	1.460	108.840	4326.04	-248.57	-287.57	403.81	40°09'38.083"N	104°42'01.297"W	2.61	
4453.00	0.430	72.920	4411.02	-248.70	-287.83	405.14	40°09'38.081"N	104°42'01.280"W	1.34	
4539.00	1.210	22.400	4497.02	-247.71	-286.89	405.79	40°09'38.090"N	104°42'01.271"W	1.16	
4624.00	1.670	18.510	4581.99	-245.64	-284.89	406.53	40°09'38.110"N	104°42'01.262"W	0.55	
4709.00	0.990	339.410	4666.97	-243.78	-283.03	406.66	40°09'38.128"N	104°42'01.260"W	1.29	
4794.00	0.540	342.090	4751.96	-242.75	-281.96	406.28	40°09'38.139"N	104°42'01.265"W	0.53	
4879.00	0.870	21.700	4836.95	-241.76	-280.98	406.40	40°09'38.148"N	104°42'01.264"W	0.67	
4965.00	0.910	31.440	4922.94	-240.52	-279.79	406.99	40°09'38.160"N	104°42'01.256"W	0.18	
5050.00	0.190	170.070	5007.94	-240.05	-279.35	407.37	40°09'38.164"N	104°42'01.251"W	1.25	
5135.00	0.350	76.030	5092.94	-240.10	-279.43	407.65	40°09'38.164"N	104°42'01.248"W	0.48	
5220.00	0.510	69.290	5177.94	-239.85	-279.23	408.25	40°09'38.166"N	104°42'01.240"W	0.20	
5306.00	0.680	62.820	5263.93	-239.41	-278.86	409.06	40°09'38.169"N	104°42'01.229"W	0.21	
5391.00	0.960	71.660	5348.92	-238.85	-278.41	410.19	40°09'38.174"N	104°42'01.215"W	0.36	
5476.00	1.140	134.470	5433.91	-239.10	-278.78	411.47	40°09'38.170"N	104°42'01.198"W	1.30	
5561.00	0.850	127.790	5518.90	-239.97	-279.76	412.57	40°09'38.160"N	104°42'01.184"W	0.37	
5646.00	0.650	94.980	5603.89	-240.30	-280.18	413.55	40°09'38.156"N	104°42'01.172"W	0.55	
5732.00	1.120	92.260	5689.88	-240.25	-280.26	414.87	40°09'38.155"N	104°42'01.154"W	0.55	
5817.00	0.480	112.540	5774.87	-240.31	-280.43	416.03	40°09'38.154"N	104°42'01.140"W	0.81	
5902.00	1.240	245.340	5859.87	-240.88	-280.95	415.53	40°09'38.149"N	104°42'01.146"W	1.89	
5987.00	1.470	258.040	5944.84	-241.66	-281.56	413.62	40°09'38.143"N	104°42'01.171"W	0.44	
6072.00	1.120	250.830	6029.82	-242.33	-282.06	411.77	40°09'38.138"N	104°42'01.194"W	0.45	
6158.00	1.120	225.140	6115.80	-243.33	-282.93	410.38	40°09'38.129"N	104°42'01.212"W	0.58	
6243.00	1.070	215.970	6200.79	-244.65	-284.15	409.33	40°09'38.117"N	104°42'01.226"W	0.21	
6328.00	0.830	215.330	6285.78	-245.87	-285.30	408.51	40°09'38.106"N	104°42'01.237"W	0.28	
6413.00	0.810	212.560	6370.77	-246.93	-286.31	407.83	40°09'38.096"N	104°42'01.245"W	0.05	
6498.00	0.840	193.870	6455.76	-248.08	-287.42	407.35	40°09'38.085"N	104°42'01.251"W	0.32	
6584.00	0.560	194.340	6541.75	-249.12	-288.44	407.10	40°09'38.075"N	104°42'01.255"W	0.33	
6669.00	0.530	177.430	6626.75	-249.92	-289.23	407.01	40°09'38.067"N	104°42'01.256"W	0.19	
6710.00	0.700	181.310	6667.75	-250.36	-289.67	407.02	40°09'38.062"N	104°42'01.256"W	0.43	
6747.00	0.440	181.610	6704.75	-250.73	-290.04	407.01	40°09'38.059"N	104°42'01.256"W	0.70	
6789.00	2.680	358.550	6746.73	-249.91	-289.22	406.98	40°09'38.067"N	104°42'01.256"W	7.43	
6832.00	7.760	353.610	6789.54	-246.07	-285.33	406.63	40°09'38.105"N	104°42'01.261"W	11.85	
6875.00	13.290	354.010	6831.80	-238.38	-277.52	405.79	40°09'38.182"N	104°42'01.271"W	12.86	
6917.00	17.880	359.980	6872.25	-227.22	-266.27	405.28	40°09'38.294"N	104°42'01.278"W	11.56	
6960.00	21.910	359.530	6912.67	-212.66	-251.64	405.21	40°09'38.438"N	104°42'01.279"W	9.38	
7002.00	27.020	359.320	6950.89	-195.36	-234.25	405.04	40°09'38.610"N	104°42'01.281"W	12.17	
7045.00	32.470	0.220	6988.21	-174.14	-212.92	404.97	40°09'38.821"N	104°42'01.282"W	12.72	
7088.00	35.100	359.920	7023.95	-150.33	-189.01	404.99	40°09'39.057"N	104°42'01.282"W	6.13	
7130.00	38.460	358.200	7057.58	-125.34	-163.88	404.57	40°09'39.306"N	104°42'01.287"W	8.37	
7173.00	42.210	359.400	7090.35	-97.70	-136.06	403.99	40°09'39.580"N	104°42'01.295"W	8.91	
7215.00	46.120	0.930	7120.48	-68.56	-106.80	404.09	40°09'39.870"N	104°42'01.293"W	9.65	
7258.00	50.440	1.040	7149.09	-36.57	-74.72	404.64	40°09'40.187"N	104°42'01.286"W	10.05	



# Actual Wellpath Report

NICHOLS 37C-31HZ AWP

Page 4 of 7



## REFERENCE WELLPATH IDENTIFICATION

Operator	KERR-MCGEE OIL & GAS ONSHORE LP	Slot	SLOT#10 NICHOLS 37C-31HZ (346'FSL & 1321'FEL,SEC.6)
Area	COLORADO	Well	NICHOLS 37C-31HZ
Field	WELD COUNTY (KERR MCGEE)	Wellbore	NICHOLS 37C-31HZ AWB
Facility	SEC.06-T2N-R65W		

## WELLPATH DATA (155 stations) † = interpolated/extrapolated station

MD [ft]	Inclination [°]	Azimuth [°]	TVD [ft]	Vert Sect [ft]	North [ft]	East [ft]	Latitude	Longitude	DLS [°/100ft]	Comments
7300.00	54.440	1.460	7174.68	-3.37	-41.44	405.37	40°09'40.515"N	104°42'01.277"W	9.56	
7343.00	58.710	0.330	7198.36	32.40	-5.56	405.93	40°09'40.870"N	104°42'01.270"W	10.17	
7385.00	62.210	359.760	7219.07	68.78	30.97	405.95	40°09'41.231"N	104°42'01.269"W	8.42	
7428.00	65.340	0.480	7238.07	107.19	69.54	406.03	40°09'41.612"N	104°42'01.268"W	7.43	
7471.00	68.040	0.730	7255.08	146.54	109.02	406.45	40°09'42.002"N	104°42'01.263"W	6.30	
7513.00	71.680	2.160	7269.54	185.87	148.43	407.45	40°09'42.392"N	104°42'01.250"W	9.24	
7556.00	74.020	2.720	7282.22	226.90	189.48	409.20	40°09'42.797"N	104°42'01.227"W	5.58	
7598.00	78.020	2.020	7292.37	267.59	230.19	410.89	40°09'43.200"N	104°42'01.206"W	9.66	
7641.00	83.060	0.750	7299.43	309.89	272.58	411.91	40°09'43.619"N	104°42'01.193"W	12.08	
7662.00	85.640	0.250	7301.50	330.71	293.48	412.09	40°09'43.825"N	104°42'01.190"W	12.51	
7707.00†	87.380	359.806	7304.24	375.43	338.39	412.11	40°09'44.269"N	104°42'01.190"W	3.99	7" Casing Point
7797.00	90.860	358.920	7305.62	464.91	428.36	411.11	40°09'45.158"N	104°42'01.203"W	3.99	
7883.00	90.430	358.720	7304.65	550.35	514.34	409.34	40°09'46.008"N	104°42'01.226"W	0.55	
7968.00	89.190	0.810	7304.93	634.94	599.33	408.99	40°09'46.848"N	104°42'01.230"W	2.86	
8053.00	89.530	359.620	7305.88	719.59	684.32	409.31	40°09'47.687"N	104°42'01.226"W	1.46	
8138.00	88.950	0.130	7307.01	804.19	769.31	409.12	40°09'48.527"N	104°42'01.228"W	0.91	
8223.00	87.710	0.580	7309.49	888.83	854.27	409.65	40°09'49.367"N	104°42'01.222"W	1.55	
8309.00	88.520	2.020	7312.32	974.56	940.20	411.60	40°09'50.216"N	104°42'01.196"W	1.92	
8394.00	90.060	2.370	7313.37	1059.42	1025.13	414.86	40°09'51.055"N	104°42'01.154"W	1.86	
8479.00	90.120	2.770	7313.24	1144.32	1110.05	418.67	40°09'51.894"N	104°42'01.105"W	0.48	
8564.00	90.000	2.910	7313.15	1229.24	1194.94	422.88	40°09'52.733"N	104°42'01.051"W	0.22	
8650.00	89.820	0.220	7313.28	1315.04	1280.90	425.23	40°09'53.583"N	104°42'01.021"W	3.13	
8735.00	89.910	1.370	7313.48	1399.77	1365.89	426.41	40°09'54.423"N	104°42'01.006"W	1.36	
8820.00	90.210	1.710	7313.39	1484.58	1450.86	428.69	40°09'55.262"N	104°42'00.976"W	0.53	
8905.00	90.460	1.690	7312.90	1569.40	1535.82	431.21	40°09'56.102"N	104°42'00.944"W	0.30	
8990.00	90.890	1.570	7311.89	1654.22	1620.78	433.63	40°09'56.942"N	104°42'00.912"W	0.53	
9076.00	91.170	0.580	7310.35	1739.96	1706.75	435.24	40°09'57.791"N	104°42'00.892"W	1.20	
9161.00	90.960	1.460	7308.77	1824.70	1791.72	436.76	40°09'58.631"N	104°42'00.872"W	1.06	
9246.00	90.310	0.350	7307.83	1909.44	1876.70	438.10	40°09'59.471"N	104°42'00.855"W	1.51	
9331.00	89.170	359.260	7308.21	1994.03	1961.70	437.81	40°10'00.311"N	104°42'00.859"W	1.86	
9416.00	88.950	359.430	7309.61	2078.55	2046.68	436.84	40°10'01.150"N	104°42'00.871"W	0.33	
9501.00	88.980	359.800	7311.14	2163.11	2131.67	436.27	40°10'01.990"N	104°42'00.878"W	0.44	
9587.00	88.860	0.040	7312.76	2248.71	2217.65	436.15	40°10'02.840"N	104°42'00.880"W	0.31	
9672.00	89.820	1.100	7313.74	2333.41	2302.64	436.99	40°10'03.680"N	104°42'00.869"W	1.68	
9757.00	89.320	0.890	7314.38	2418.16	2387.62	438.47	40°10'04.520"N	104°42'00.850"W	0.64	
9842.00	90.240	2.240	7314.71	2502.97	2472.59	440.79	40°10'05.359"N	104°42'00.820"W	1.92	
9927.00	89.960	2.990	7314.56	2587.87	2557.50	444.67	40°10'06.198"N	104°42'00.770"W	0.94	
10012.00	89.960	1.780	7314.62	2672.75	2642.42	448.20	40°10'07.038"N	104°42'00.725"W	1.42	
10098.00	90.520	0.580	7314.26	2758.52	2728.40	449.98	40°10'07.887"N	104°42'00.702"W	1.54	
10183.00	90.860	1.320	7313.23	2843.26	2813.38	451.39	40°10'08.727"N	104°42'00.683"W	0.96	
10268.00	90.950	0.500	7311.89	2927.99	2898.36	452.73	40°10'09.567"N	104°42'00.666"W	0.97	
10353.00	90.670	359.080	7310.69	3012.58	2983.35	452.42	40°10'10.407"N	104°42'00.670"W	1.70	
10439.00	90.330	359.110	7309.94	3098.06	3069.34	451.06	40°10'11.256"N	104°42'00.688"W	0.40	
10524.00	90.180	359.070	7309.56	3182.55	3154.33	449.72	40°10'12.096"N	104°42'00.705"W	0.18	
10609.00	89.720	359.280	7309.64	3267.06	3239.32	448.49	40°10'12.936"N	104°42'00.721"W	0.59	



# Actual Wellpath Report

NICHOLS 37C-31HZ AWP

Page 5 of 7



REFERENCE WELLPATH IDENTIFICATION			
Operator	KERR-MCGEE OIL & GAS ONSHORE LP	Slot	SLOT#10 NICHOLS 37C-31HZ (346'FSL & 1321'FEL,SEC.6)
Area	COLORADO	Well	NICHOLS 37C-31HZ
Field	WELD COUNTY (KERR MCGEE)	Wellbore	NICHOLS 37C-31HZ AWB
Facility	SEC.06-T2N-R65W		

WELLPATH DATA (155 stations)										
MD [ft]	Inclination [°]	Azimuth [°]	TVD [ft]	Vert Sect [ft]	North [ft]	East [ft]	Latitude	Longitude	DLS [°/100ft]	Comments
10694.00	90.460	359.340	7309.50	3351.58	3324.31	447.47	40°10'13.776"N	104°42'00.734"W	0.87	
10780.00	90.330	0.300	7308.91	3437.18	3410.31	447.20	40°10'14.626"N	104°42'00.737"W	1.13	
10866.00	89.960	0.410	7308.69	3522.85	3496.30	447.73	40°10'15.476"N	104°42'00.730"W	0.45	
10951.00	91.110	359.540	7307.90	3607.47	3581.30	447.69	40°10'16.315"N	104°42'00.731"W	1.70	
11036.00	91.130	0.500	7306.24	3692.08	3666.28	447.72	40°10'17.155"N	104°42'00.730"W	1.13	
11121.00	90.330	0.640	7305.15	3776.77	3751.27	448.57	40°10'17.995"N	104°42'00.720"W	0.96	
11207.00	90.860	359.690	7304.26	3862.41	3837.26	448.82	40°10'18.845"N	104°42'00.716"W	1.26	
11292.00	90.580	359.110	7303.19	3946.95	3922.25	447.93	40°10'19.685"N	104°42'00.728"W	0.76	
11377.00	90.120	0.690	7302.67	4031.56	4007.25	447.78	40°10'20.525"N	104°42'00.730"W	1.94	
11462.00	89.910	0.890	7302.65	4116.29	4092.24	448.95	40°10'21.365"N	104°42'00.715"W	0.34	
11546.00	89.900	1.190	7302.79	4200.05	4176.22	450.47	40°10'22.195"N	104°42'00.695"W	0.36	
11632.00	89.350	1.930	7303.35	4285.85	4262.19	452.82	40°10'23.044"N	104°42'00.665"W	1.07	
11717.00	89.010	1.510	7304.57	4370.67	4347.14	455.37	40°10'23.884"N	104°42'00.632"W	0.64	
11803.00	89.270	1.640	7305.86	4456.48	4433.10	457.73	40°10'24.733"N	104°42'00.601"W	0.34	
11888.00	88.890	0.850	7307.22	4541.25	4518.07	459.58	40°10'25.573"N	104°42'00.578"W	1.03	
11973.00	88.610	1.310	7309.08	4625.99	4603.03	461.18	40°10'26.412"N	104°42'00.557"W	0.63	
12058.00	88.580	359.910	7311.16	4710.67	4688.00	462.08	40°10'27.252"N	104°42'00.545"W	1.65	
12143.00	89.720	359.010	7312.42	4795.20	4772.98	461.28	40°10'28.092"N	104°42'00.556"W	1.71	
12228.00	90.120	0.950	7312.54	4879.83	4857.98	461.25	40°10'28.932"N	104°42'00.556"W	2.33	Last BHI MWD+IFR Surveys
12519.00	90.120	0.950	7311.93	5169.96	5148.94	466.08	40°10'31.807"N	104°42'00.494"W	0.00	Projection to Bit

HOLE & CASING SECTIONS - Ref Wellbore: NICHOLS 37C-31HZ AWB      Ref Wellpath: NICHOLS 37C-31HZ AWP									
String/Diameter	Start MD [ft]	End MD [ft]	Interval [ft]	Start TVD [ft]	End TVD [ft]	Start N/S [ft]	Start E/W [ft]	End N/S [ft]	End E/W [ft]
13.5in Open Hole	16.00	943.00	927.00	16.00	942.98	0.00	0.00	-2.10	5.01
9.625in Casing Surface	16.00	943.00	927.00	16.00	942.98	0.00	0.00	-2.10	5.01
8.75in Open Hole	943.00	7717.00	6774.00	942.98	7304.66	-2.10	5.01	348.38	412.07
7in Casing Intermediate	16.00	7707.00	7691.00	16.00	7304.24	0.00	0.00	338.39	412.11
6.125in Open Hole	7707.00	12519.00	4812.00	7304.24	7311.93	338.39	412.11	5148.94	466.08



# Actual Wellpath Report

NICHOLS 37C-31HZ AWP

Page 6 of 7



REFERENCE WELLPATH IDENTIFICATION			
Operator	KERR-MCGEE OIL & GAS ONSHORE LP	Slot	SLOT#10 NICHOLS 37C-31HZ (346'FSL & 1321'FEL,SEC.6)
Area	COLORADO	Well	NICHOLS 37C-31HZ
Field	WELD COUNTY (KERR MCGEE)	Wellbore	NICHOLS 37C-31HZ AWB
Facility	SEC.06-T2N-R65W		

TARGETS									
Name	MD [ft]	TVD [ft]	North [ft]	East [ft]	Grid East [US ft]	Grid North [US ft]	Latitude	Longitude	Shape
NICHOLS PAD SECTION 31 LINES		-1.00	1.44	59.81	3223144.85	1302635.55	40°09'40.939"N	104°42'05.728"W	polygon
NICHOLS PAD SECTION 6 LINES		-1.00	1.44	59.81	3223144.85	1302635.55	40°09'40.939"N	104°42'05.728"W	polygon
NICHOLS PAD SEC. 31 HARDLINES (460' SETBACKS)		7117.00	1.44	59.81	3223144.85	1302635.55	40°09'40.939"N	104°42'05.728"W	polygon
NICHOLS PAD SEC. 6 HARDLINES (460' SETBACKS)		7117.00	1.44	59.81	3223144.85	1302635.55	40°09'40.939"N	104°42'05.728"W	polygon
NICHOLS 37C-31HZ BHL ON PLAT (300'FSL & 900'FEL,SEC.31) REV-2		7302.00	5149.35	483.44	3223522.11	1307786.84	40°10'31.811"N	104°42'00.270"W	point
NICHOLS 37C-31HZ BHL ON PLAT (300'FSL & 900'FEL,SEC.31) REV-1		7319.00	5149.35	483.44	3223522.11	1307786.84	40°10'31.811"N	104°42'00.270"W	point
NICHOLS 37C-31HZ LAND BOX		7320.00	0.00	0.00	3223085.06	1302633.58	40°09'40.925"N	104°42'06.498"W	polygon

WELLPATH COMPOSITION - Ref Wellbore: NICHOLS 37C-31HZ AWB    Ref Wellpath: NICHOLS 37C-31HZ AWP				
Start MD [ft]	End MD [ft]	Positional Uncertainty Model	Log Name/Comment	Wellbore
16.00	876.00	Generic gyro - continuous (Standard)	MS ENERGY SURVEYS <116-876>	NICHOLS 37C-31HZ AWB
876.00	7662.00	NaviTrak (MAGCORR,IFR)	BHI NAVITRAK (MAGCOOR,IFR) MWD 8.75"HOLE <985-7662>	NICHOLS 37C-31HZ AWB
7662.00	12228.00	OnTrak (MAGCORR,IFR)	BHI ONTRAK (MAGCOOR,IFR) MWD 6"HOLE <7797-12228>	NICHOLS 37C-31HZ AWB
12228.00	12519.00	Blind Drilling (std)	Projection to bit	NICHOLS 37C-31HZ AWB



# Actual Wellpath Report

NICHOLS 37C-31HZ AWP

Page 7 of 7



## REFERENCE WELLPATH IDENTIFICATION

Operator	KERR-MCGEE OIL & GAS ONSHORE LP	Slot	SLOT#10 NICHOLS 37C-31HZ (346'FSL & 1321'FEL,SEC.6)
Area	COLORADO	Well	NICHOLS 37C-31HZ
Field	WELD COUNTY (KERR MCGEE)	Wellbore	NICHOLS 37C-31HZ AWB
Facility	SEC.06-T2N-R65W		

## WELLPATH COMMENTS

MD [ft]	Inclination [°]	Azimuth [°]	TVD [ft]	Comment
16.00	0.000	107.900	16.00	Tie-On
116.00	0.470	107.900	116.00	Begin GYRO Surveys
876.00	0.370	231.360	875.98	Tie-Into GYRO Surveys
985.00	0.370	210.140	984.97	Begin BHI MWD+IFR Surveys
7707.00	87.380	359.806	7304.24	7" Casing Point
12228.00	90.120	0.950	7312.54	Last BHI MWD+IFR Surveys
12519.00	90.120	0.950	7311.93	Projection to Bit