

T6S, R96W, 6th P.M.

# BERRY PETROLEUM COMPANY

Well location, SCHOOL HOUSE POINT OM08D B21 696, located as shown in the NE 1/4 NE 1/4 of Section 21, T6S, R96W, 6th P.M., Garfield County, Colorado.

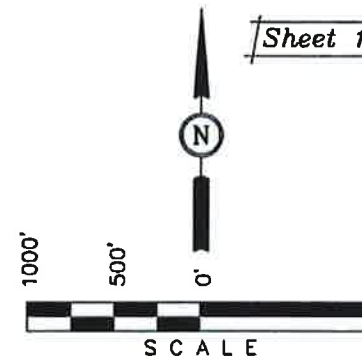
## BASIS OF ELEVATION

SPOT ELEVATION AT THE NORTHWEST CORNER OF SECTION 30, T5S, R95W, 6th P.M. TAKEN FROM THE FORKED GULCH QUADRANGLE, COLORADO, GARFIELD COUNTY, 7.5 MINUTE SERIES (TOPOGRAPHICAL MAP) PUBLISHED BY THE UNITED STATES DEPARTMENT OF THE INTERIOR, GEOLOGICAL SURVEY. SAID ELEVATION IS MARKED AS BEING 5966 FEET.

## BASIS OF BEARINGS

BASIS OF BEARINGS IS A G.P.S. OBSERVATION.

Sheet 1f of 12



## CERTIFICATE

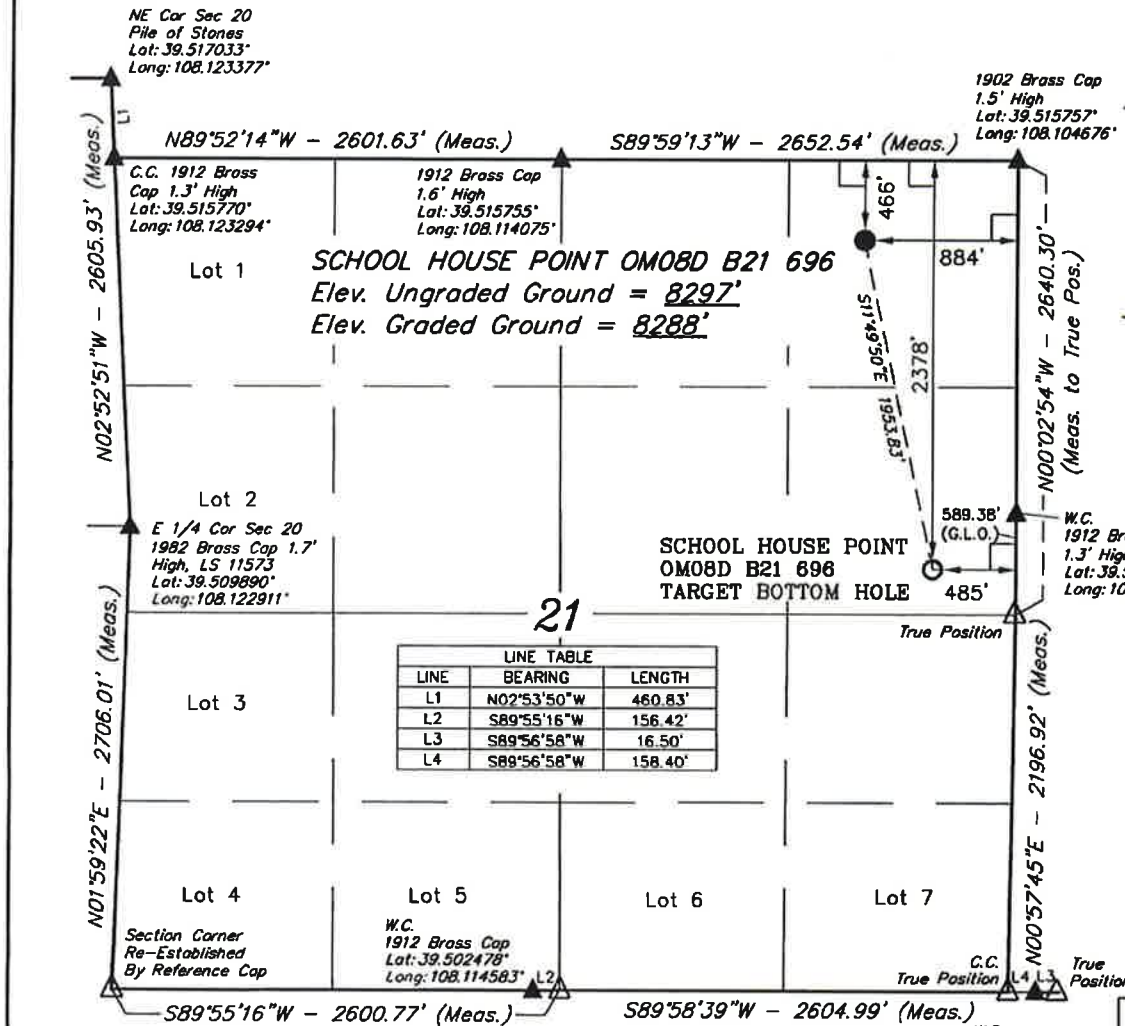
THIS IS TO CERTIFY THAT THE ABOVE PLAT WAS PREPARED AND LOCATION AS SHOWN WAS STAKED ON THE GROUND IN FIELD NOTES OF ACTUAL SURVEYS MADE BY ME OR UNDER MY SUPERVISION AND THAT THE SAME ARE TRUE AND CORRECT TO THE BEST OF MY KNOWLEDGE AND BELIEF.

REGISTERED LAND SURVEYOR  
REGISTRATION NO. 12345  
STATE OF COLORADO

## UINTAH ENGINEERING & LAND SURVEYING

85 SOUTH 200 EAST - VERNAL, UTAH 84078

(435) 788-1017



## LEGEND:

└ = 90° SYMBOL

● = PROPOSED WELL HEAD.

▲ = SECTION CORNERS LOCATED.

△ = SECTION CORNERS RE-EST.

(Not Set on Ground)

NOTE:  
SEE ADDENDUM PLAT FOR EXISTING IMPROVEMENTS WITHIN 400' OF THE PROPOSED WELL DISTURBANCE.

PDOP = 1.2

NAD 83 (TARGET BOTTOM HOLE)	NAD 83 (SURFACE LOCATION)
LATITUDE = 39°30'33.22" (39.509228)	LATITUDE = 39°30'52.12" (39.514478)
LONGITUDE = 108°06'23.00" (108.106389)	LONGITUDE = 108°06'28.11" (108.107808)
NAD 27 (TARGET BOTTOM HOLE)	NAD 27 (SURFACE LOCATION)
LATITUDE = 39°30'33.30" (39.509250)	LATITUDE = 39°30'52.20" (39.514500)
LONGITUDE = 108°06'20.72" (108.105756)	LONGITUDE = 108°06'25.83" (108.107175)

SCALE 1" = 1000'	DATE SURVEYED: 02-07-12	DATE DRAWN: 02-28-12
PARTY B.J. T.M. D.R.B.	REFERENCES G.L.O. PLAT	
WEATHER COLD	FILE BERRY PETROLEUM COMPANY	