

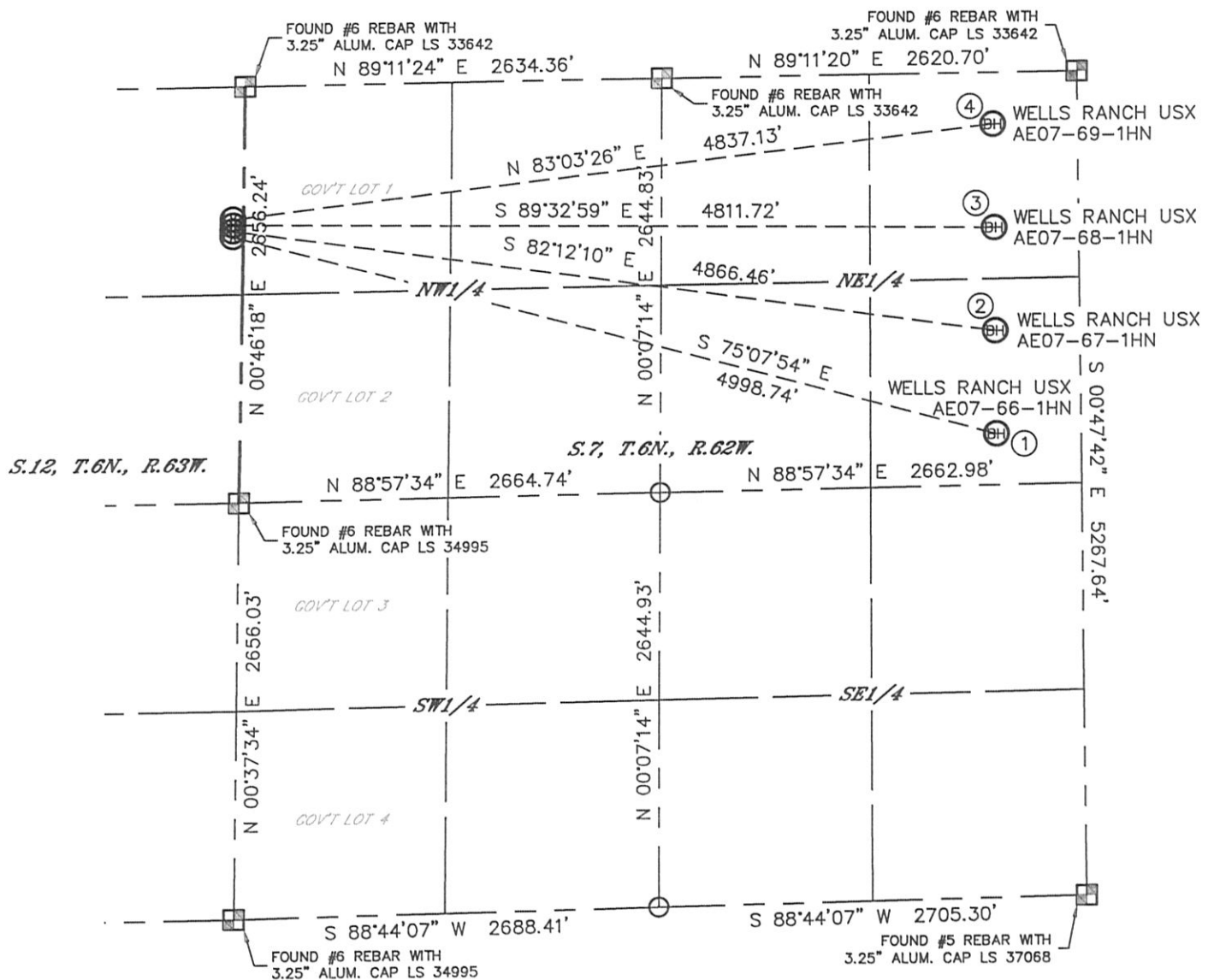
Lat40°, Inc. 1635 Foxtrail Drive, Suite 325 Loveland, CO 970-776-3321

## MULTI-WELL PLAN

WELLS RANCH USX AE07-66-1HN PAD



THIS MAP DOES NOT REPRESENT A BOUNDARY SURVEY

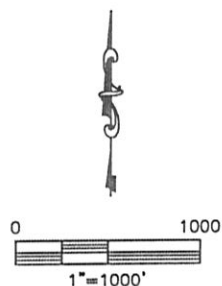
SECTION: 12  
TOWNSHIP: 6N  
RANGE: 63W



- |  |  |   |   |
|--|--|---|---|
| ①  | ②  | ③   | ④   |
| -BOTTOM HOLE-<br>WELLS RANCH USX<br>AE07-66-1HN<br>2310' FNL<br>535' FEL<br>LAT: 40.50208°N<br>LONG: 104.35785°W | -BOTTOM HOLE-<br>WELLS RANCH USX<br>AE07-67-1HN<br>1650' FNL<br>535' FEL<br>LAT: 40.50389°N<br>LONG: 104.35786°W | -BOTTOM HOLE-<br>WELLS RANCH USX<br>AE07-68-1HN<br>990' FNL<br>535' FEL<br>LAT: 40.50570°N<br>LONG: 104.35786°W | -BOTTOM HOLE-<br>WELLS RANCH USX<br>AE07-69-1HN<br>330' FNL<br>535' FEL<br>LAT: 40.50751°N<br>LONG: 104.35786°W |

### LEGEND

-  = ALIQUOT MONUMENT AS DESCRIBED
-  = CALCULATED POSITION



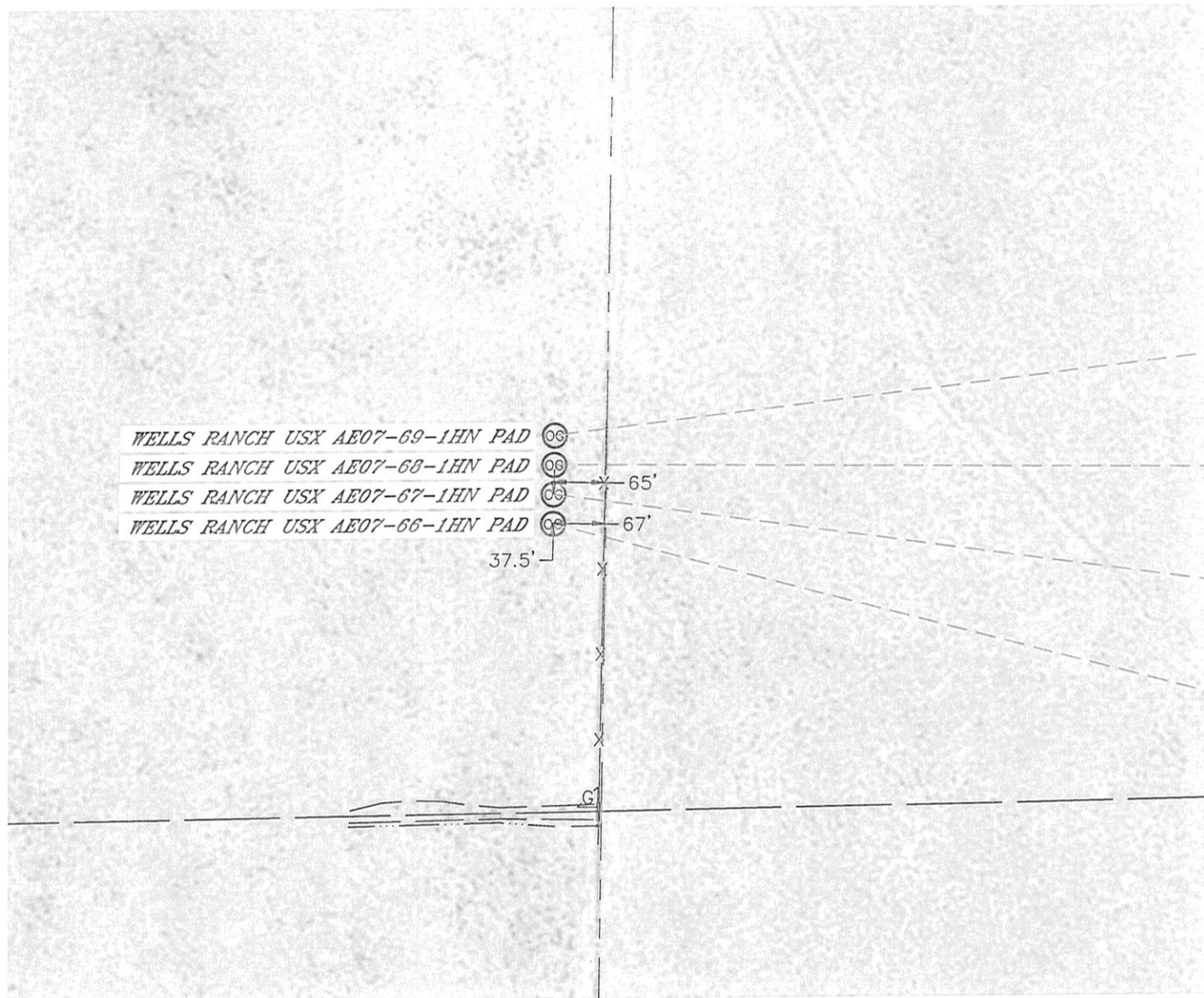
DATE: 8/03/2012  
PROJECT#: 2012094

Lat40°, Inc. 1635 Foxtrail Drive, Suite 325 Loveland, CO 970-776-3321

## MULTI-WELL PLAN

WELLS RANCH USX AE07-66-1HN PAD

SECTION: 12  
TOWNSHIP: 6N  
RANGE: 63W



0 200  
1"=200'

DATE: 8/03/2012  
PROJECT#: 2012094