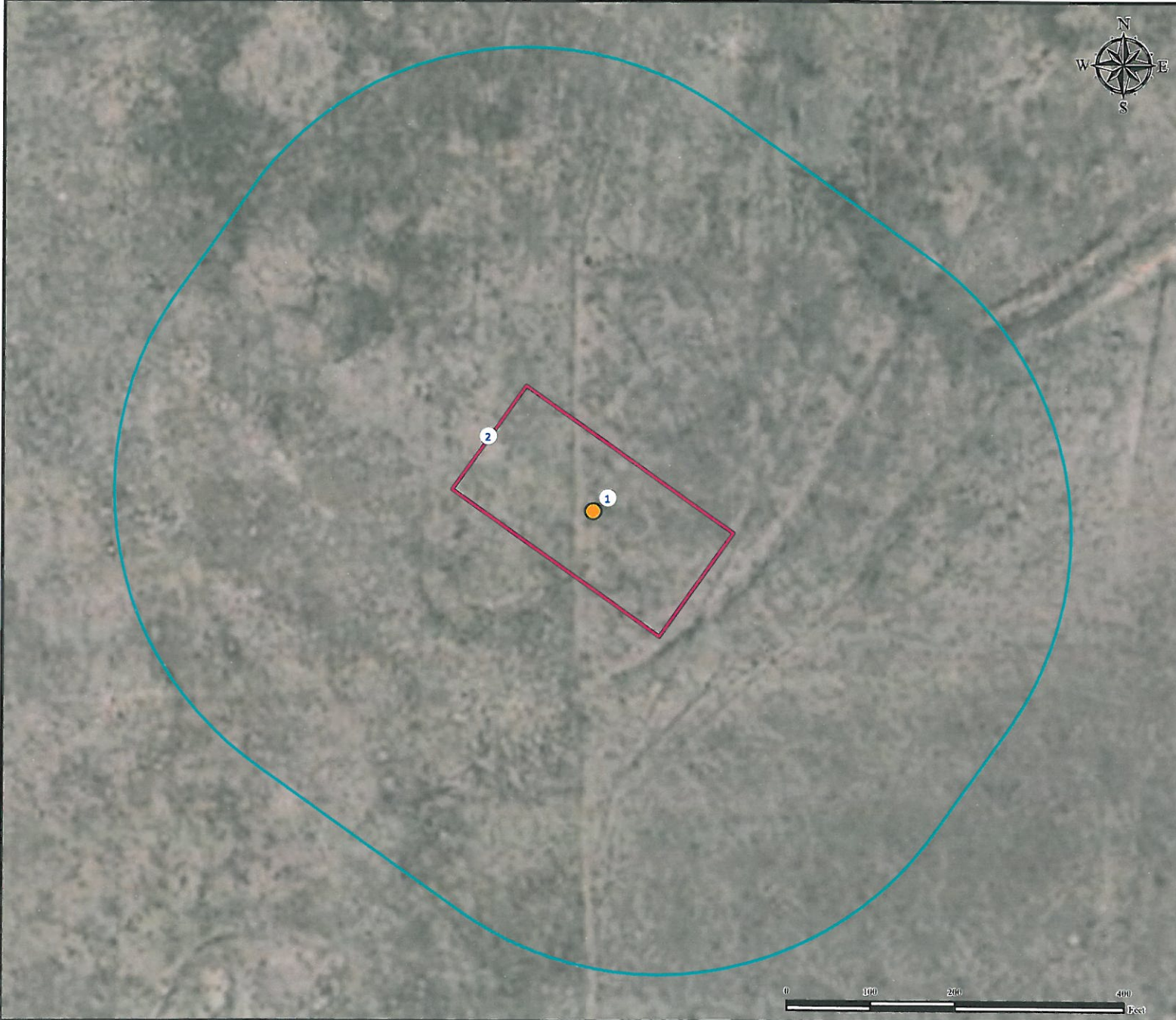


# Location Drawing

## SWAN 21-44

**SW¼ SE¼ SECTION 21, TOWNSHIP 2 SOUTH, RANGE 56 WEST OF THE 6TH PRINCIPAL MERIDIAN**



1. Proposed Well SWAN 21-44.

2. Operational Disturbance Area.

There Are No Visible Surface Improvements Within a 400' Radius of the Disturbance Area of the Proposed Oil and Gas Location.

### Legend

- Disturbance Area
- 400' Radius
- Proposed Well

Building (Barn) -	1857' NE
Public Road (Co Rd D) -	1314' E
Property Line (Edna Kalous) -	1307' W
Utility (Power Line) -	1277' E
Surface Water ( Inter Stream) -	1585' NW
Railroad -	>5280' NE
Water Well - 1338' NE	SWL = 0'
Permit: 142327,	Reciept: 9058139

### Reference Location

**\*\* All Measurements are Made from Reference Well SWAN 21-44 \*\***

Lat: 39.860475° Long:-103.653979° (NAD83)  
Elevation: 4659 Feet

Current Surface Use: Pasture  
Future Surface Use: Pasture



*Use our resources to find yours!*  
[www.petro-fs.com](http://www.petro-fs.com)  
(303) 928-7128

Field Date: 11/16 2012  
Drafting Date: 12/07 2012  
Drafter: PAH  
Revision:

Data Sources:  
- Aerial courtesy of NAIP (2009)

### Disturbance Agerage:

1.03 Acres Drilling Operations  
0.40 Acres Interm Reclaim

Prepared for:

