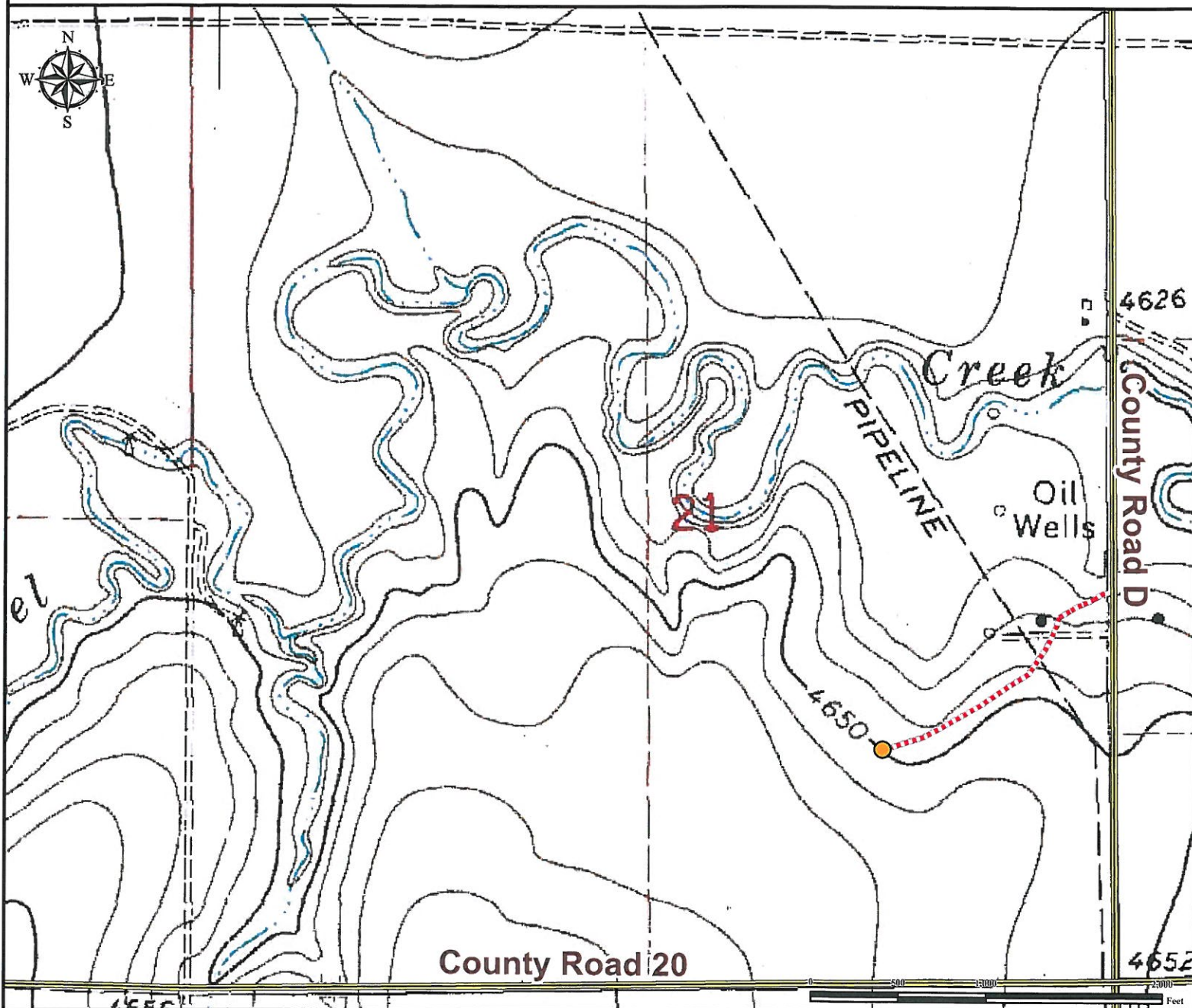


Access Road Map

SWAN 21-44

SW¼ SE¼ SECTION 21, TOWNSHIP 2 SOUTH, RANGE 56 WEST OF THE 6TH PRINCIPAL MERIDIAN



From Byers, CO: From the intersection of Highway 36 (Main St) and Interstate I-70 (Highway 287), Drive East on Highway 36 (Main St) for ±34.4 miles to CO-71.

Turn Left on CO-71\County Road G and proceed North ±8.0 miles to County Road 20.

Turn Left on County Road 20 and proceed West ±3.0 miles to County Road D.

Turn Right on County Road D and proceed North ±0.5 miles to proposed access road.

Turn Left and proceed West ±0.4 miles to proposed well pad location.

Total distance from Byers, CO to proposed well pad location is ±46.3 miles.

Legend

● Proposed Well Pad ■■■■ Proposed Access Road === Public Road

Reference Location

** All Measurements are Made from Reference Well SWAN 21-44 **

Lat: 39.860475° Long: -103.653979° (NAD83)
Elevation: 4659 Feet



Use our resources to find yours!
www.petro-fs.com
(303) 928-7128

Field Date: 11/16/2012
Drafting Date: 12/10/2012
Drafter: PAH
Revision:

Data Sources:
- TOPO courtesy of USGS

Prepared for:

