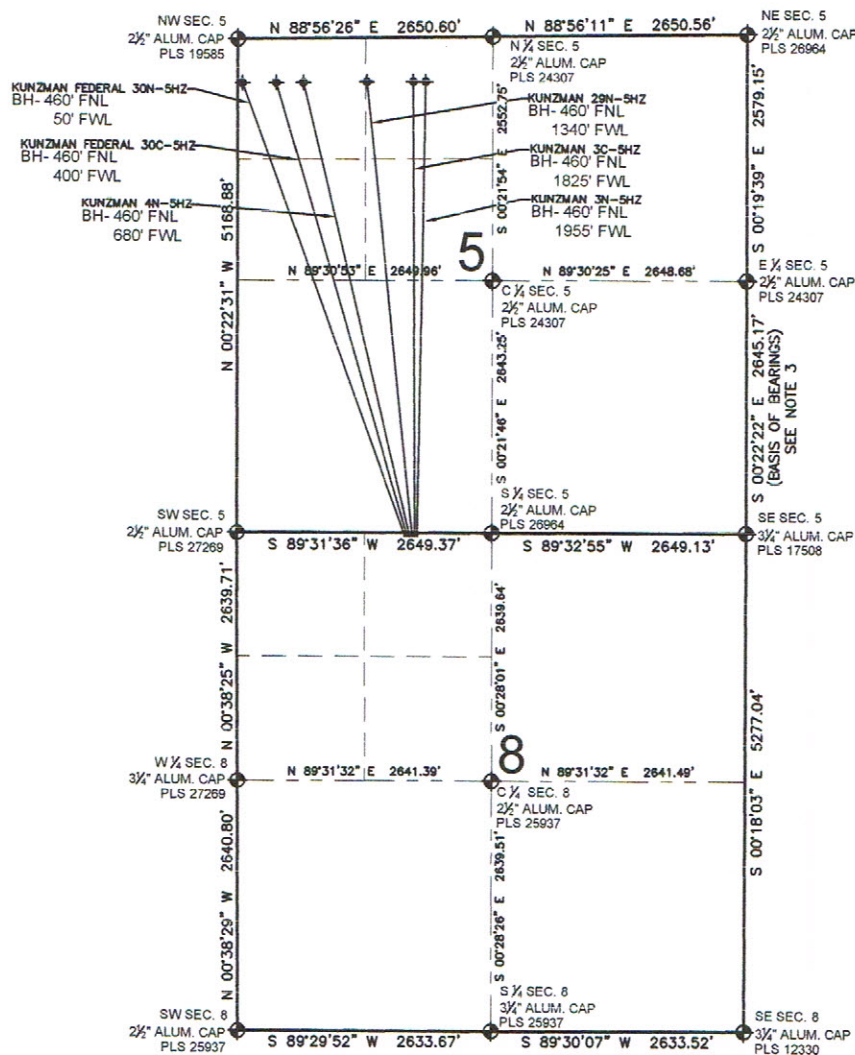


KUNZMAN 29N-5HZ MULTI-WELL PLAN

SECTION 8, TOWNSHIP 2 NORTH, RANGE 66 WEST, 6TH P.M.



NOTES:

KUNZMAN FEDERAL 30N-5HZ TO BE AT 30' FNL, 1744' FWL.
 BOTTOM HOLE AT 460' FNL & 50' FWL.
 KUNZMAN FEDERAL 30C-5HZ TO BE AT 30' FNL, 1770' FWL.
 BOTTOM HOLE AT 460' FNL & 400' FWL.
 KUNZMAN 4N-5HZ TO BE AT 30' FNL, 1796' FWL.
 BOTTOM HOLE AT 460' FNL & 680' FWL.
 KUNZMAN 29N-5HZ TO BE AT 30' FNL, 1822' FWL.
 BOTTOM HOLE AT 460' FNL & 1340' FWL.
 KUNZMAN 3C-5HZ TO BE AT 30' FNL, 1848' FWL.
 BOTTOM HOLE AT 460' FNL & 1825' FWL.
 KUNZMAN 3N-5HZ TO BE AT 30' FNL, 1874' FWL.
 BOTTOM HOLE AT 460' FNL & 1955' FWL.

LEGEND

⊕ = EXISTING MONUMENT ♦ = BOTTOM HOLE BH= BOTTOM HOLE
 ● = PROPOSED WELL ◆ = EXISTING WELL

PFS llc

Petroleum Field Services, LLC
 1801 W. 13th Ave.
 Denver, CO 80204

KERR-MCGEE OIL & GAS ONSHORE LP

FIELD DATE:
07-23-12

DRAWING DATE:
12-05-12

SURFACE LOCATION:

NE 1/4 NW 1/4, SEC. 8, T2N, R66W, 6TH P.M.
 WELD COUNTY, COLORADO

