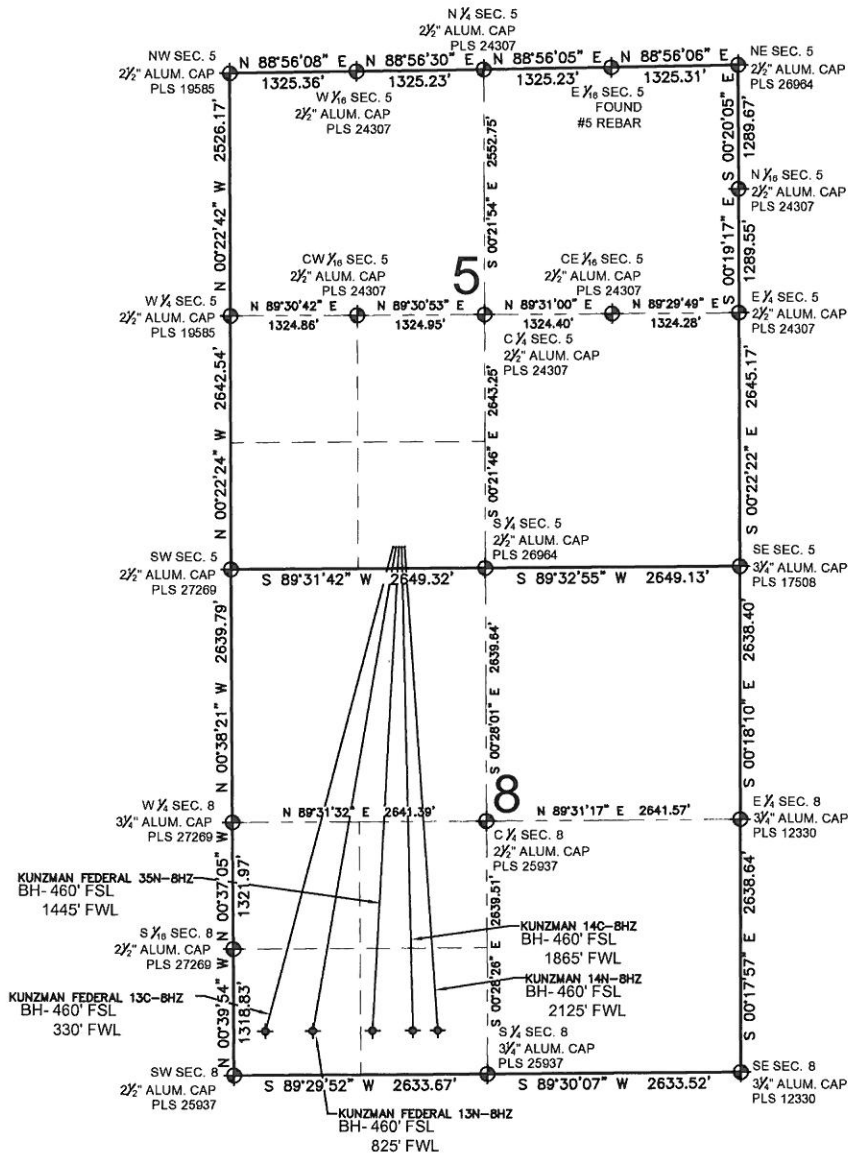


KUNZMAN FEDERAL 35N-8HZ MULTI-WELL PLAN

SECTION 5, TOWNSHIP 2 NORTH, RANGE 66 WEST, 6TH P.M.



NOTES:

KUNZMAN FEDERAL 13C-8HZ TO BE AT 225' FSL, 1694' FWL.
 BOTTOM HOLE AT 460' FSL & 330' FWL.
 KUNZMAN FEDERAL 13N-8HZ TO BE AT 225' FSL, 1724' FWL.
 BOTTOM HOLE AT 460' FSL & 825' FWL.
 KUNZMAN FEDERAL 35N-8HZ TO BE AT 226' FSL, 1754' FWL.
 BOTTOM HOLE AT 460' FSL & 1445' FWL.
 KUNZMAN 14C-8HZ TO BE AT 226' FSL, 1784' FWL.
 BOTTOM HOLE AT 460' FSL & 1865' FWL.
 KUNZMAN 14N-8HZ TO BE AT 226' FSL, 1814' FWL.
 BOTTOM HOLE AT 460' FSL & 2125' FWL.

LEGEND

= EXISTING MONUMENT
 = BOTTOM HOLE
 BH= BOTTOM HOLE
 = PROPOSED WELL
 = EXISTING WELL



KERR-MCGEE OIL & GAS ONSHORE LP

FIELD DATE:
02-19-13

DRAWING DATE:
03-05-13

SURFACE LOCATION:

SE 1/4 SW 1/4, SEC. 5, T2N, R66W, 6TH P.M.
 WELD COUNTY, COLORADO

