

NOBLE ENERGY INC.
WELLS 43-3
NESE 3-5N-63W
1977' FSL & 660' FEL
Weld County, Colorado
Wattenberg
CURRENT WELLBORE SCHEMATIC
with PROPOSED P&A
1/8/2013

API: 05-123-21157
COGCC #

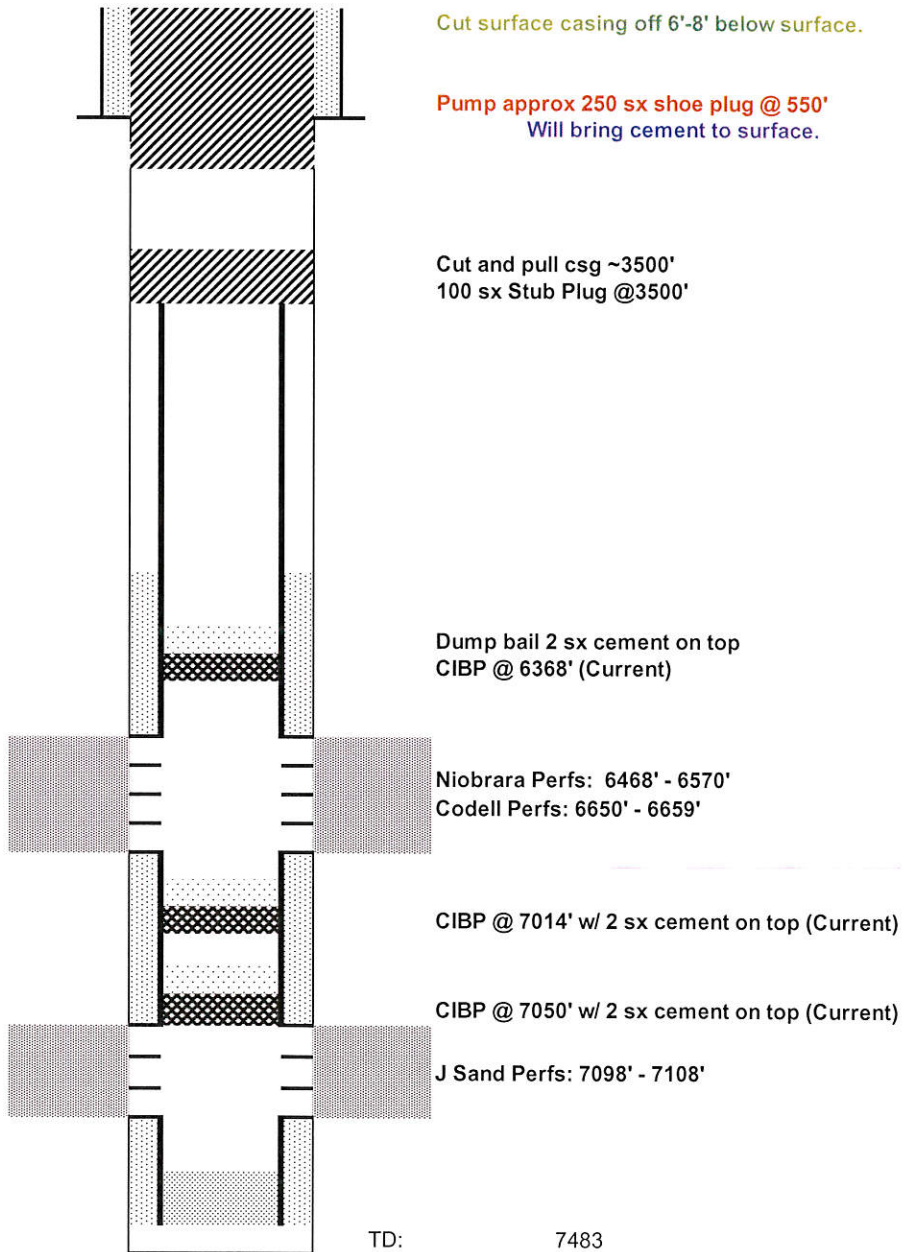
GL Elev: 4700
KB Elev: 4712

Spud Date:

Surface Casing :
8 5/8" 24# @ 416'
Cement: 295 sx
TOC: Surface

TOC @ 6050'

Production Casing :
4 1/2" 11.6# @ 7313'
Cement: 333 sx
TD: 12/23/2002



TD: 7483