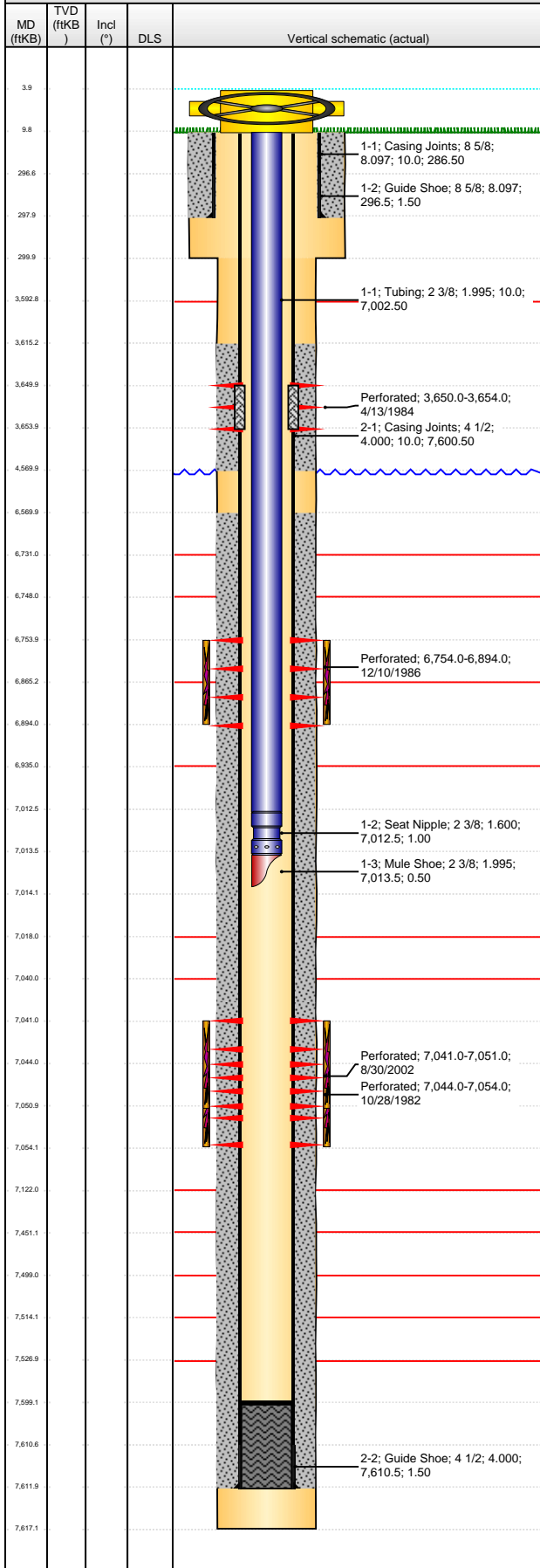


Well Name: DINNER 14-01

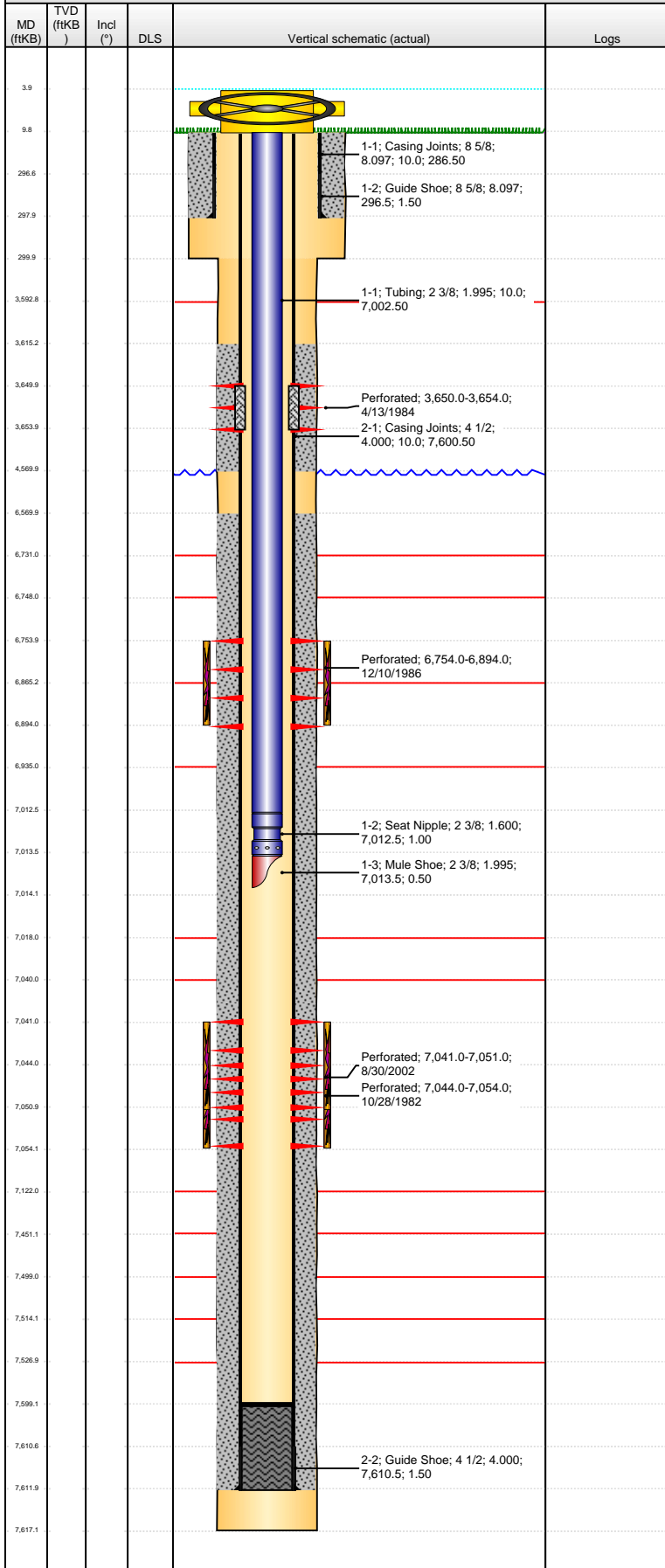
VERTICAL - ORIGINAL HOLE, 3/12/2013 3:31:33 PM



Logs	API 05-123-10788		Business Unit WATTENBERG		District 15		Well Config VERTICAL				
	Original KB Elevation (ft) 4,725.00		KB - GL / MSL (ftKB) 10.00		Spud Date 9/11/1982		P & A Date				
	Comment ALL PARKMAN & NIOBRARA DETAILS OBTAINED FROM STATE WEBSITE & PETRO DOWNLOAD.										
	Directions To Well										
	Congressional Location										
	Quarter 1	Quarter 2 NE	Quarter 3 SW	Quarter 4 SW	Section 14	Township 6 N	Twncshp N... 65	Rng E/W Dir W			
	Bottom Hole Location										
	North-South Distance (ft)		From N or S Line		East-West Distance (ft)		From E or W Line				
	Plug Back Total Depths										
	Date 9/18/1982	Depth (ftKB) 7,599.0		Method CASING TALLY		Com					
	Wellbore Sections										
	Section Des			Size (in)		Act Top (ftKB)		Act Btm (ftKB)			
	SURFACE			12 1/4		10.0		300.0			
	PRODUCTION			7 7/8		300.0		7,617.0			
	Zone Statuses										
	Zone Name		Status Date		Status		Job				
	CODELL		8/23/1983		PR		DRILLING/COMPLETION - ORIGINAL, 9/11/1982 00:00				
	CODELL		9/22/2002		PR		RE-FRAC, 8/29/2002 00:00				
	NIOBRARA		8/23/1983		PR		DRILLING/COMPLETION - ORIGINAL, 9/11/1982 00:00				
	PARKMAN		2/4/1984		PR		RECOMPLETION, 1/25/1984 00:00				
	PARKMAN		12/4/1986		SI		RECOMPLETION, 12/3/1986 00:00				
	Casing Strings										
	Surface, 298.0ftKB										
	Casing Description Surface		Run Date 9/12/1982		OD (in) 8 5/8		Wt/Len (l... 24.00		Grade J-55	Top (ftKB) 10.0	MD (ftKB) 298.0
	Production, 7,612.0ftKB										
	Casing Description Production		Run Date 9/18/1982		OD (in) 4 1/2		Wt/Len (l... 11.60		Grade	Top (ftKB) 10.0	MD (ftKB) 7,612.0
	Cement										
	Description SURFACE CASING CEMENT						Top Depth (ftKB) 10.0		Bottom Depth (ftKB) 298.0		
	Description PRODUCTION CASING CEMENT						Top Depth (ftKB) 6,570.0		Bottom Depth (ftKB) 7,612.0		
	Description Cement Plug						Top Depth (ftKB) 7,599.0		Bottom Depth (ftKB) 7,612.0		
	Description PRODUCTION CASING CEMENT						Top Depth (ftKB) 3,615.0		Bottom Depth (ftKB) 4,570.0		
	Description CEMENT SQUEEZE						Top Depth (ftKB) 3,650.0		Bottom Depth (ftKB) 3,654.0		
	Tubing Components										
	Item Des		OD (in)	Wt (lb/ft)	Grade	Jts	Len (ft)		Btm (ftKB)	Btm (TVD) (ftKB)	
	Tubing		2 3/8	4.70	J-55	220	7,002.50		7,012.5		
	Seat Nipple		2 3/8			1	1.00		7,013.5		
	Mule Shoe		2 3/8			1	0.50		7,014.0		
	Perforation Data										
	Zone		Bnch/St g	Entered Shot Total	Top (ftKB)		Btm (ftKB)		Date		
	PARKMAN, ORIGINAL HOLE			16	3,650.00		3,654.00		4/13/1984		
	NIOBRARA, ORIGINAL HOLE			12	6,754.00		6,894.00		12/10/1986		
	CODELL, ORIGINAL HOLE			40	7,041.00		7,051.00		8/30/2002		
	CODELL, ORIGINAL HOLE			20	7,044.00		7,054.00		10/28/1982		
	Stimulations & Treatments										
	Date 10/29/1982		Zone CODELL, ORIGINAL HOLE			Primary Job Type DRILLING/COMPLETION - ORIGINAL					
	Technical Result			Tech Result Details				Tech Result Note			
	Comment Not mapped: stimulation.user1 = 150,000# 100-mesh, 145,000# 20/40 sd										
	Frac'd well w/ 150,000# 100-mesh, 145,000# 20/40 sd										

Well Name: DINNER 14-01

VERTICAL - ORIGINAL HOLE, 3/12/2013 3:31:33 PM



Stimulations & Treatments					
Date	Zone	Primary Job Type			
12/13/1986	NIOBRARA, ORIGINAL HOLE	RECOMPLETION			
Technical Result		Tech Result Details	Tech Result Note		
Comment					
Not mapped: stimulation.user2 = 2116 bbls of gelled 2% KCL & 48 BO					
Not mapped: stimulation.user1 = 15000#100-mesh; 165000#20/40; 10000#12/20Carbolite					
Frac'd Niobrara Middle and Upper Benches w/ 1000 gal acid; 15,000# 100-mesh, 165,000# 20/40 sd & 10,000# of 12/20 Carbolite, using 2116 bbls of gelled 2% KCL & 48 BO.					
Date	Zone	Primary Job Type			
9/17/2002	CODELL, ORIGINAL HOLE	RE-FRAC			
Technical Result		Tech Result Details	Tech Result Note		
Comment					
Not mapped: stimulation.user2 = 123,744 gal Vistar 26 and 24# gel					
Not mapped: stimulation.user1 = 260,340# 20-40 sd					
Refraced Codell w/ 260,340# 20-40 sd, using 123,744 gal Vistar 26 and 24# gel					
Other In Hole					
Run Date	Des		OD (in)	Top (ftKB)	Btm (ftKB)
Logs					
Date	Type			Top (ftKB)	Btm (ftKB)
9/18/1982	COMPENSATED DENSITY			2,696.0	7,614.0
10/4/1982	CEMENT BOND			2,696.0	7,614.0
2/6/2013	GYRO			10.0	6,963.0