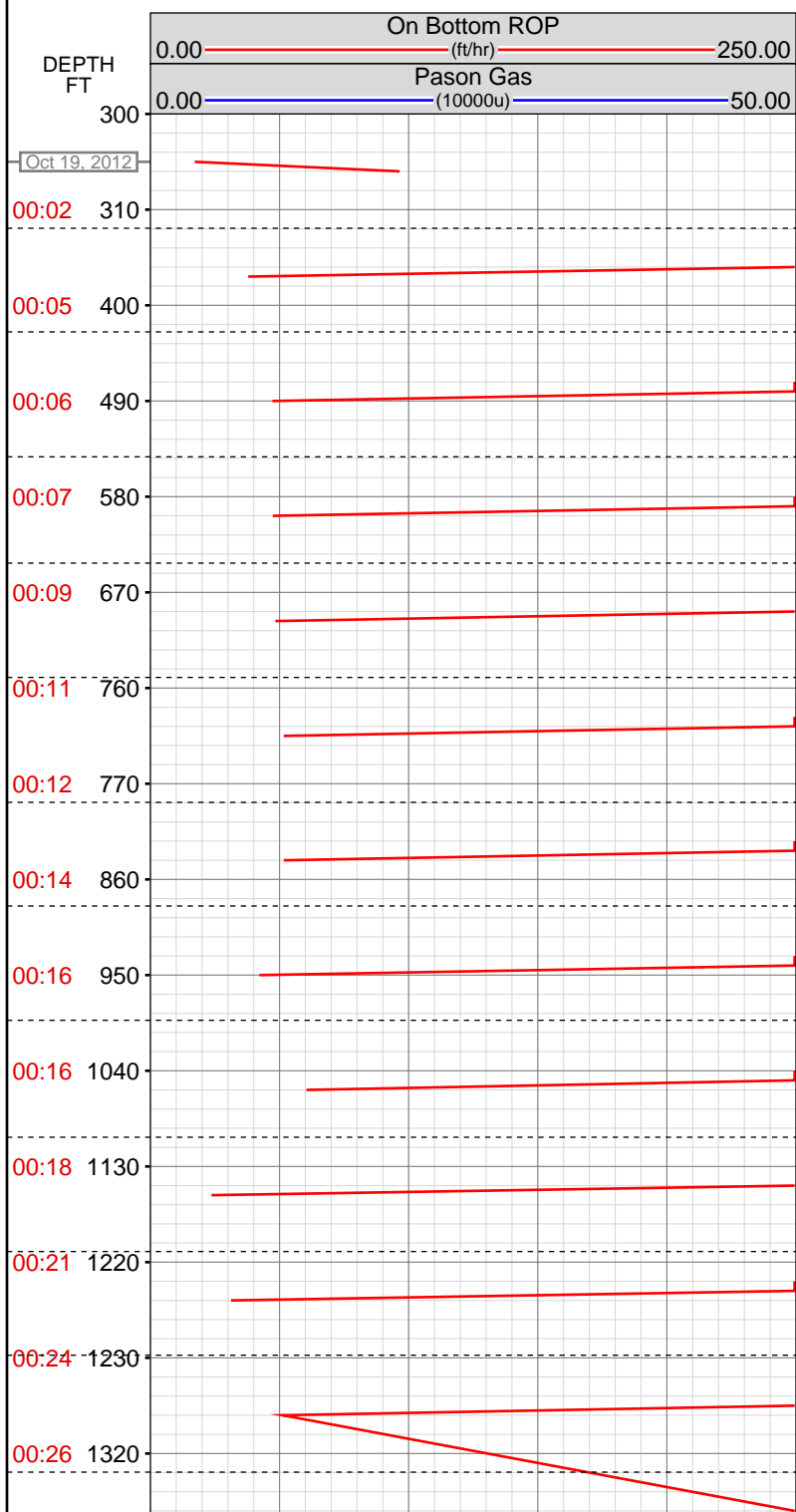


DataHub EDR Log

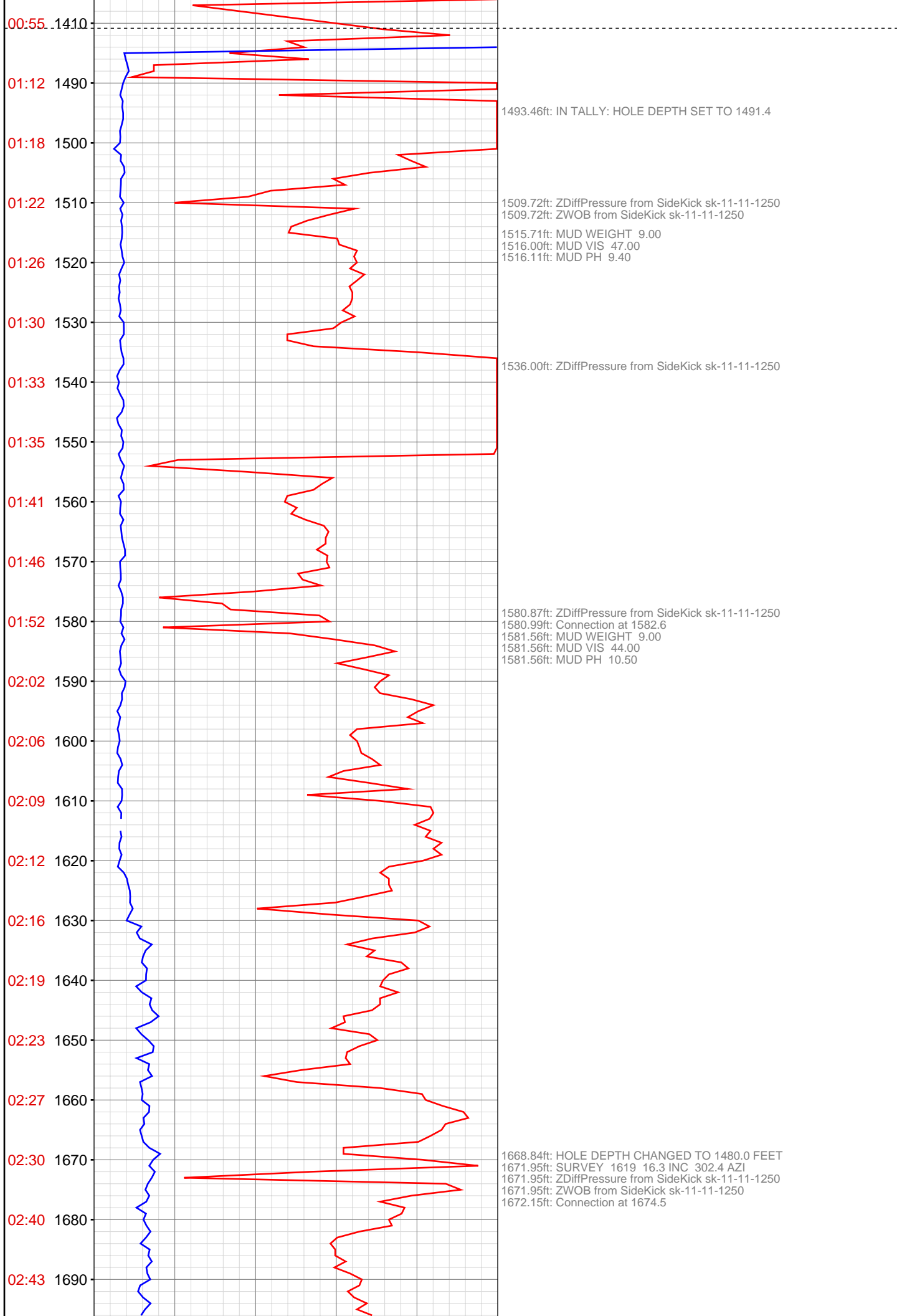
Thu Nov 01, 2012 09:56:51
Well Dossier 1350602637
Greg Veregin

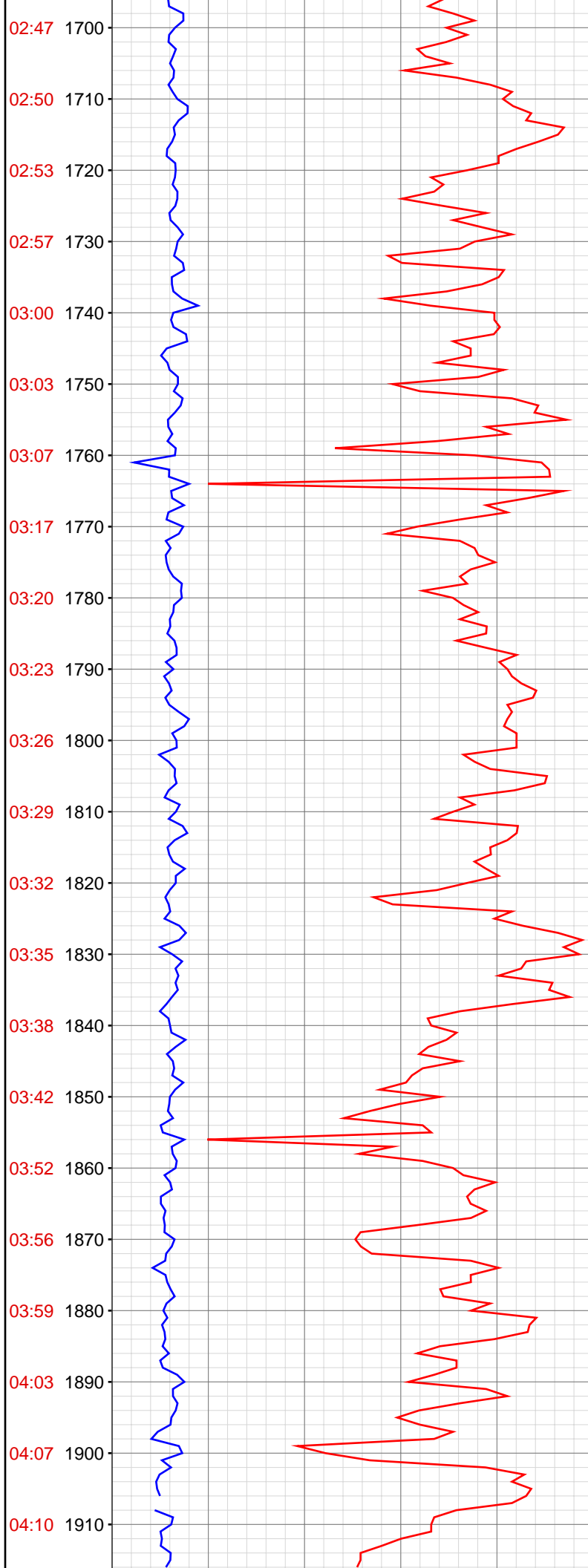
OPERATOR: EnCana Oil & Gas (USA), Inc.
WELL: SHIDELER FEE 31-5C
FIELD:
LOCATION: NE SE SEC 31, T007S, R92W6
COUNTRY: USA
RIG: Pat-UTI 303

CONTRACTOR: Patterson-UTI Drilling Company
UNIQUE WELL ID: 05 045 21612 00
SPUD DATE: Oct 19, 2012 01:30
RELEASE DATE: Oct 24, 2012 06:00



MEMOS

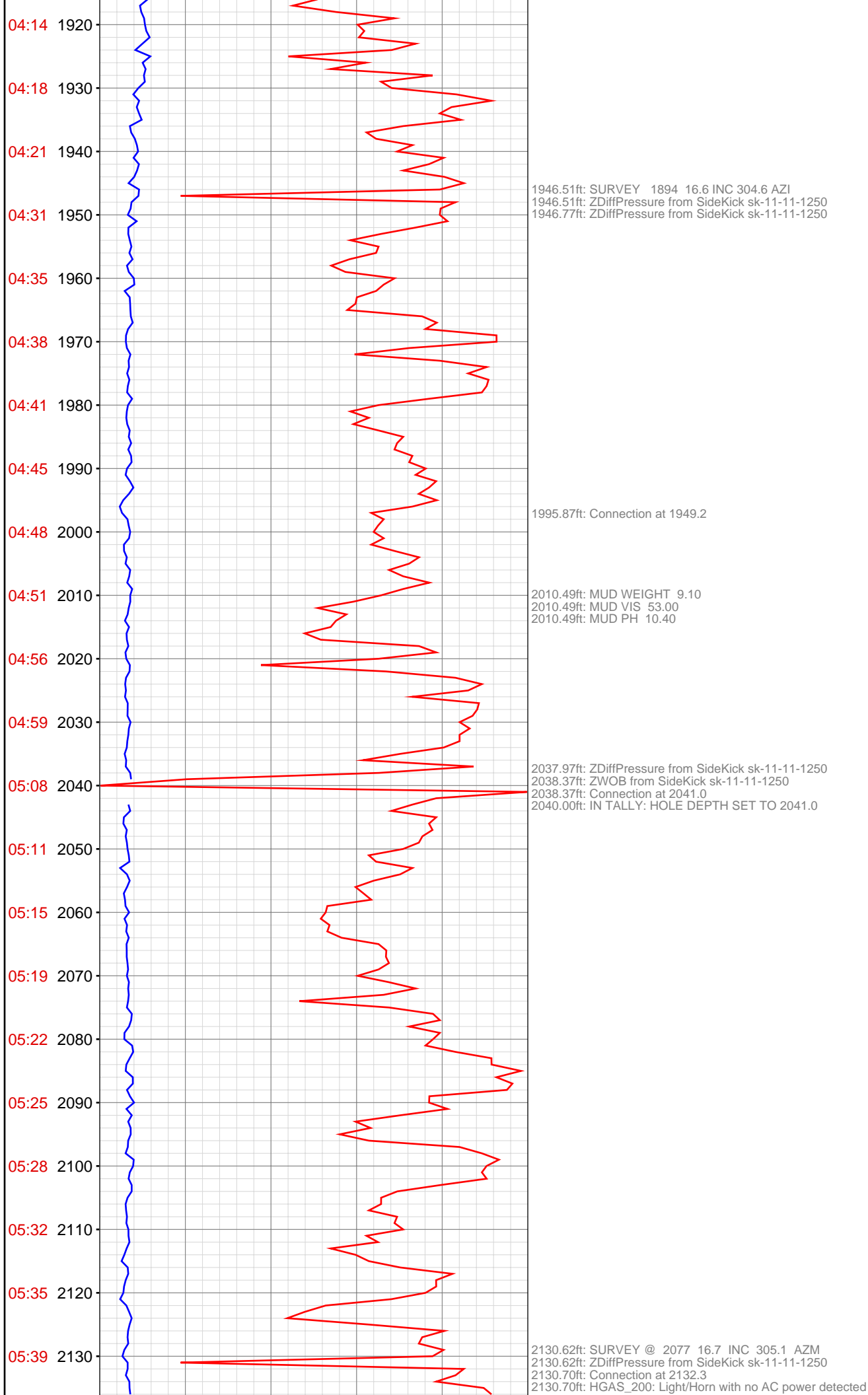


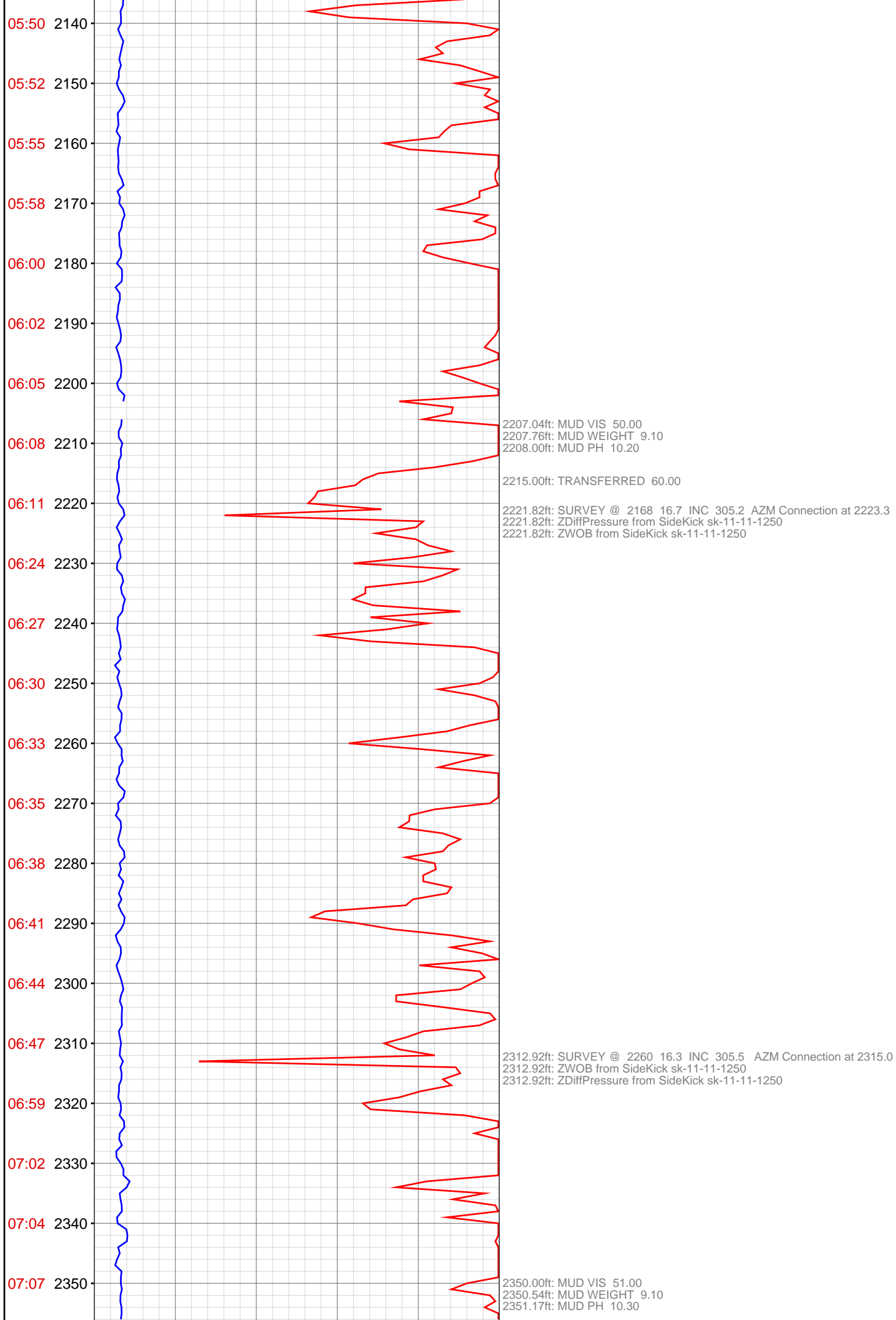


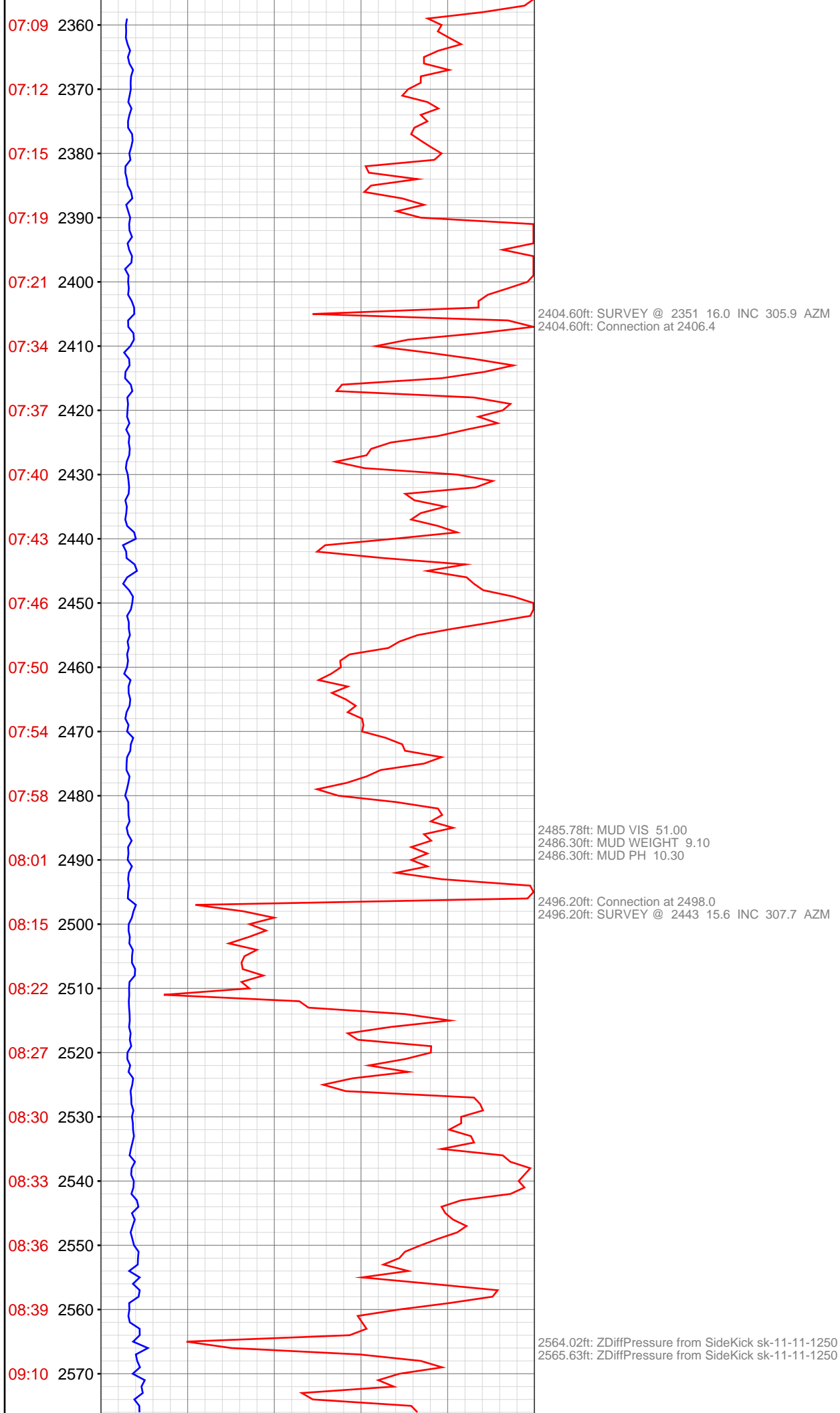
1714.00ft: MUD WEIGHT 9.05
1714.00ft: MUD VIS 43.00
1714.00ft: MUD PH 10.50

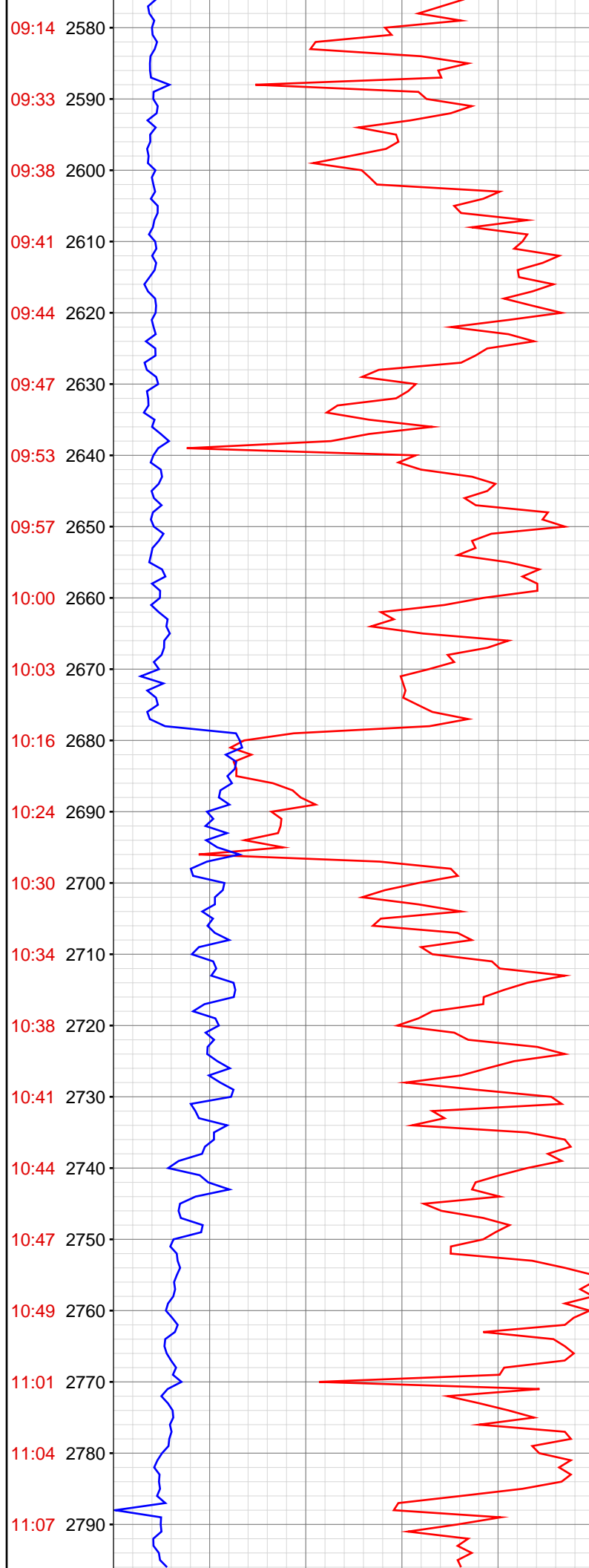
1763.13ft: SURVEY 1711 16.6 INC 304.0 AZI
1763.13ft: Connection at 1766.1
1763.13ft: ZDiffPressure from SideKick sk-11-11-1250

1855.11ft: Connection at 1857.7
1855.11ft: ZDiffPressure from SideKick sk-11-11-1250
1855.11ft: ZWOB from SideKick sk-11-11-1250
1855.29ft: SURVEY 1802 16.5 INC 304.1 AZI
1856.48ft: MUD WEIGHT 9.10
1856.90ft: MUD VIS 51.00
1857.00ft: MUD PH 10.50







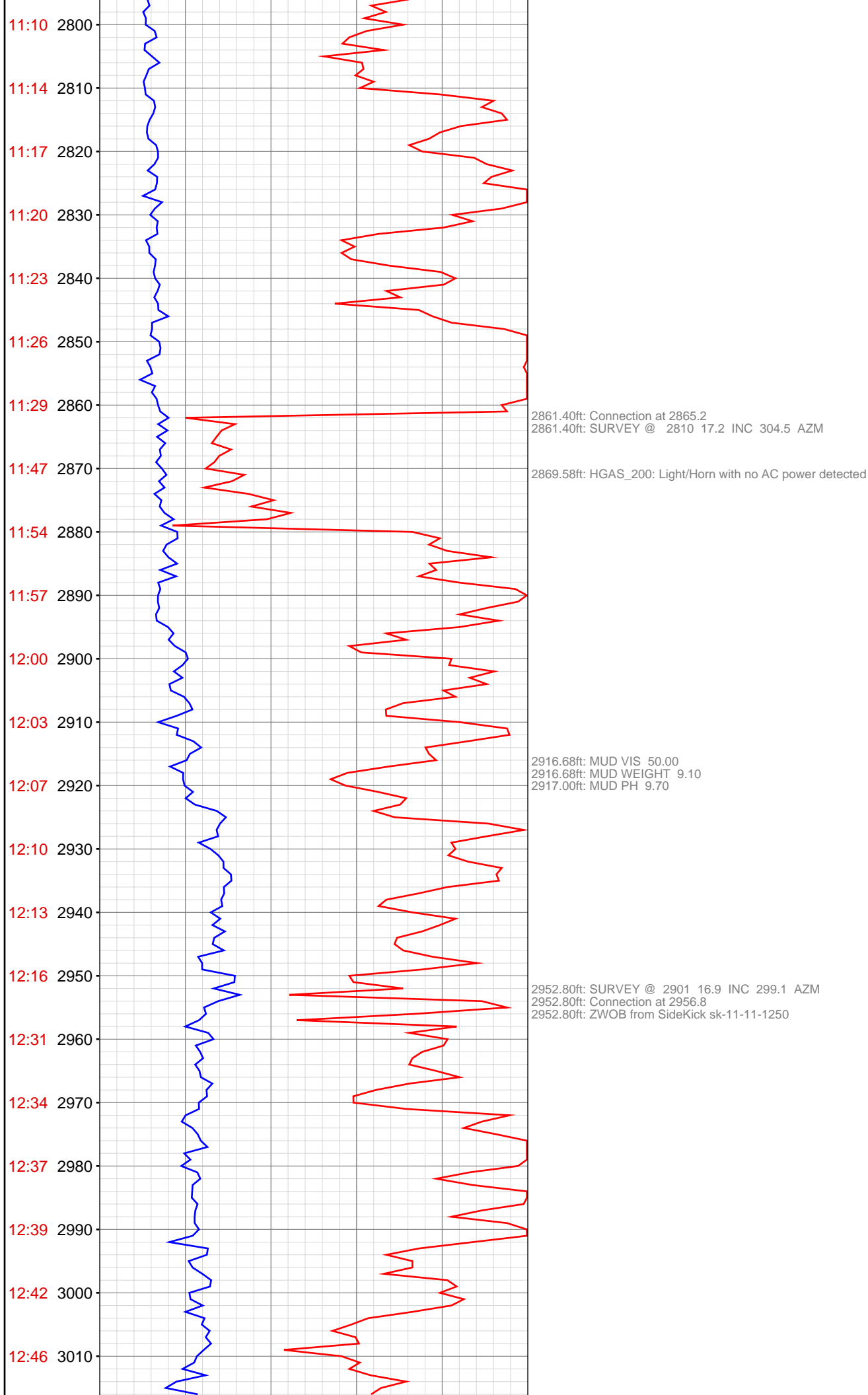


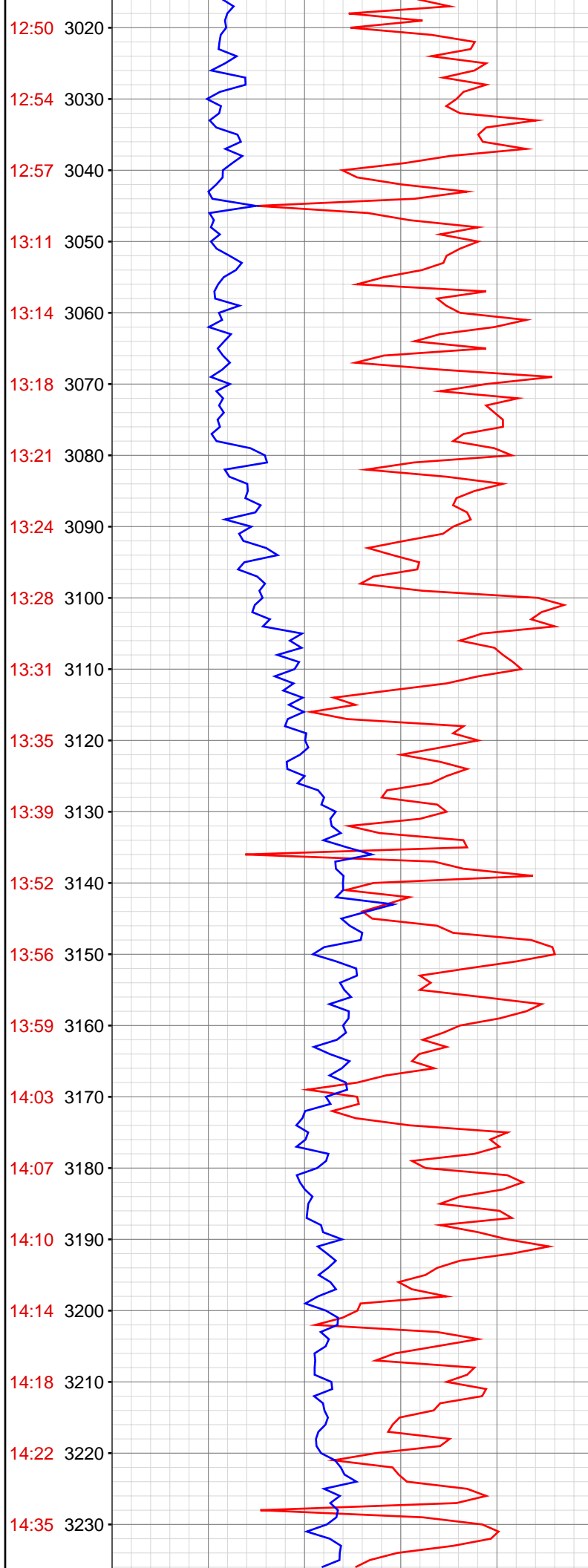
2587.50ft: Connection at 2589.8
2587.50ft: SURVEY @ 2534 16.7 INC 307 AZM
2587.50ft: ZDiffPressure from SideKick sk-11-11-1250
2587.50ft: ZWOB from SideKick sk-11-11-1250

2637.88ft: ZDiffPressure from SideKick sk-11-11-1250

2675.25ft: MUD VIS 50.00
2675.25ft: MUD WEIGHT 9.10
2675.73ft: MUD PH 9.80 SURVEY @ 2626 16.9 INC 307.6 AZM
2678.82ft: Connection at 2681.8

2769.98ft: MUD VIS 50.00
2769.98ft: MUD WEIGHT 9.15
2769.98ft: MUD PH 10.20
2769.98ft: Connection at 2773.6
2775.40ft: SURVEY @ 2718 17.0 INC 303.4 AZM

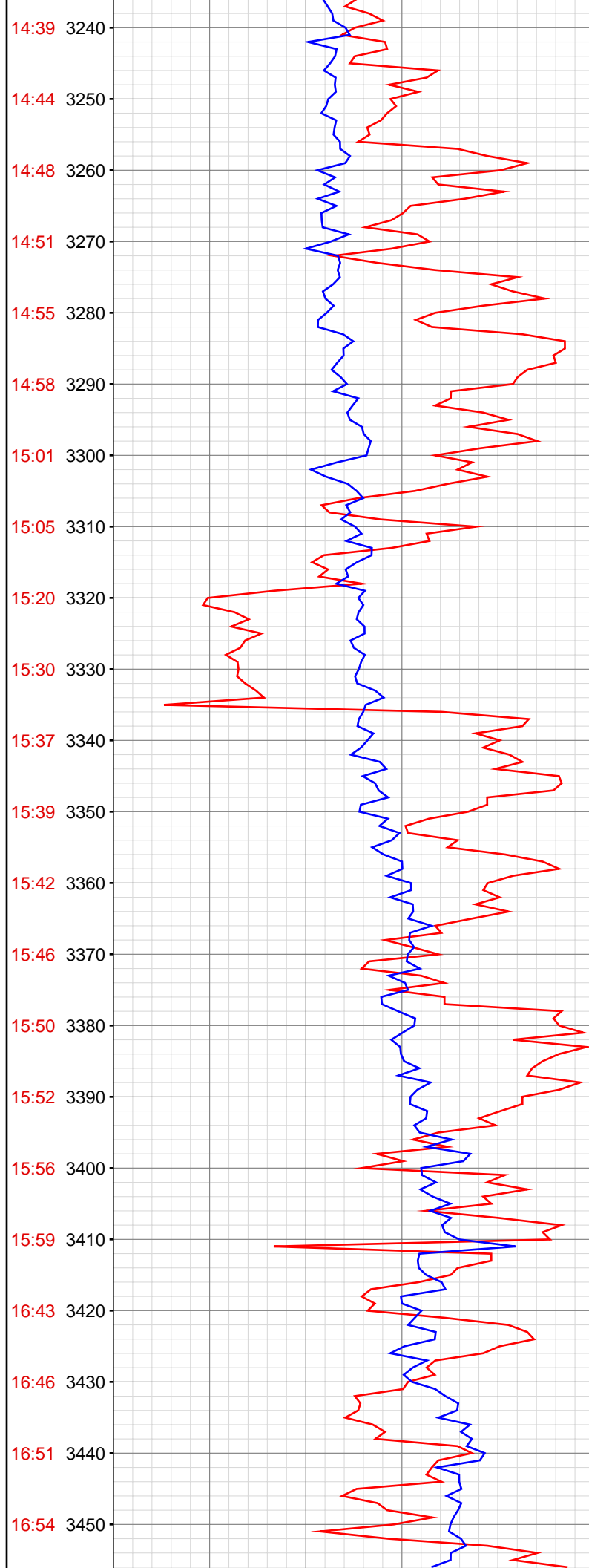




3044.30ft: SURVEY @ 2993 16.7 INC 300.1 AZM
3044.30ft: Connection at 3048.7
3044.30ft: ZWOB from SideKick sk-11-11-1250

3135.76ft: Connection at 3140.1
3135.76ft: SURVEY @ 3085 16.7 INC 301.3 AZM
3135.76ft: ZDiffPressure from SideKick sk-11-11-1250
3135.76ft: ZWOB from SideKick sk-11-11-1250
3135.76ft: MUD VIS 47.00
3135.76ft: MUD WEIGHT 9.15
3135.76ft: MUD PH 9.70

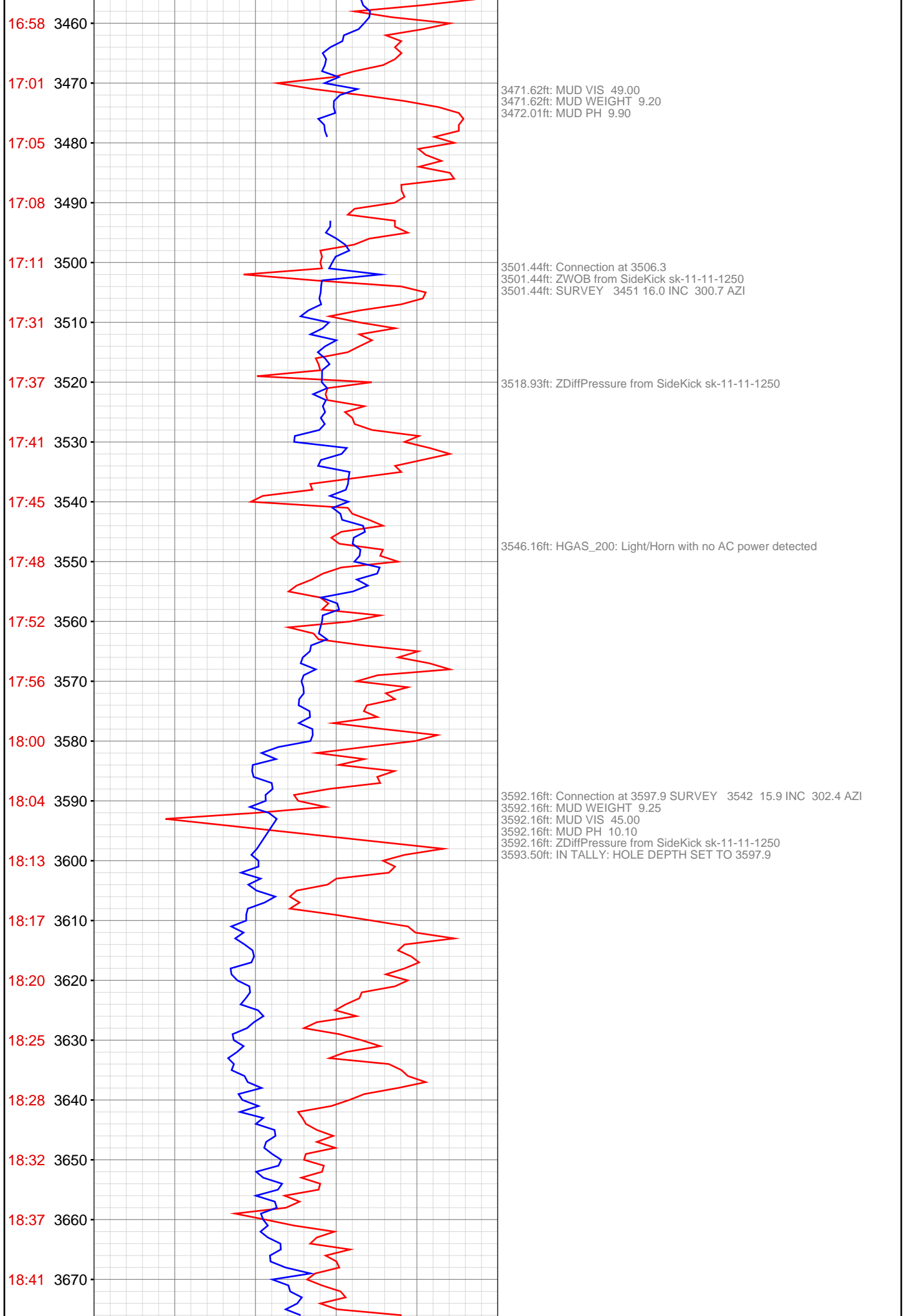
3227.34ft: Connection at 3231.8
3227.34ft: SURVEY @ 3176 16.3 INC 302.2 AZM
3227.34ft: ZWOB from SideKick sk-11-11-1250



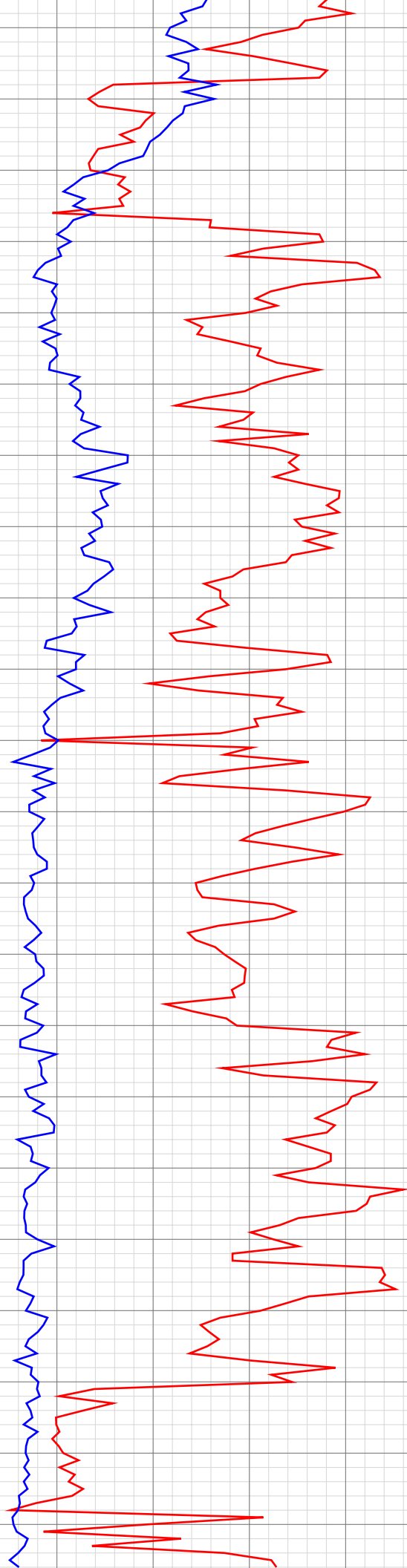
3264.00ft: MUD VIS 48.00
3264.00ft: MUD WEIGHT 9.15
3264.80ft: MUD PH 9.90

3318.67ft: Connection at 3323.5
3318.67ft: Connection at 3231.8 SURVEY @ 3268 16.0 INC 03.2 AZM
3318.67ft: ZDiffPressure from SideKick sk-11-11-1250

3410.33ft: BOP DRILL RIG SERVICE
3410.33ft: Connection at 3414.8
3410.33ft: SURVEY @ 3359 16.4 INC 299.0 AZM
3410.33ft: ZWOB from SideKick sk-11-11-1250
3410.33ft: ZDiffPressure from SideKick sk-11-11-1250



18:45 3680
18:57 3690
19:04 3700
19:11 3710
19:14 3720
19:19 3730
19:23 3740
19:26 3750
19:30 3760
19:34 3770
19:47 3780
19:51 3790
19:55 3800
19:59 3810
20:04 3820
20:07 3830
20:10 3840
20:13 3850
20:17 3860
20:21 3870
20:40 3880
20:52 3890



3687.70ft: SURVEY 3634 15.2 INC 303.4 AZI
3687.70ft: ZDiffPressure from SideKick sk-11-11-1250
3687.70ft: Connection at 3689.4

3698.69ft: MUD WEIGHT 9.30
3698.69ft: MUD VIS 47.00
3698.69ft: MUD PH 10.00

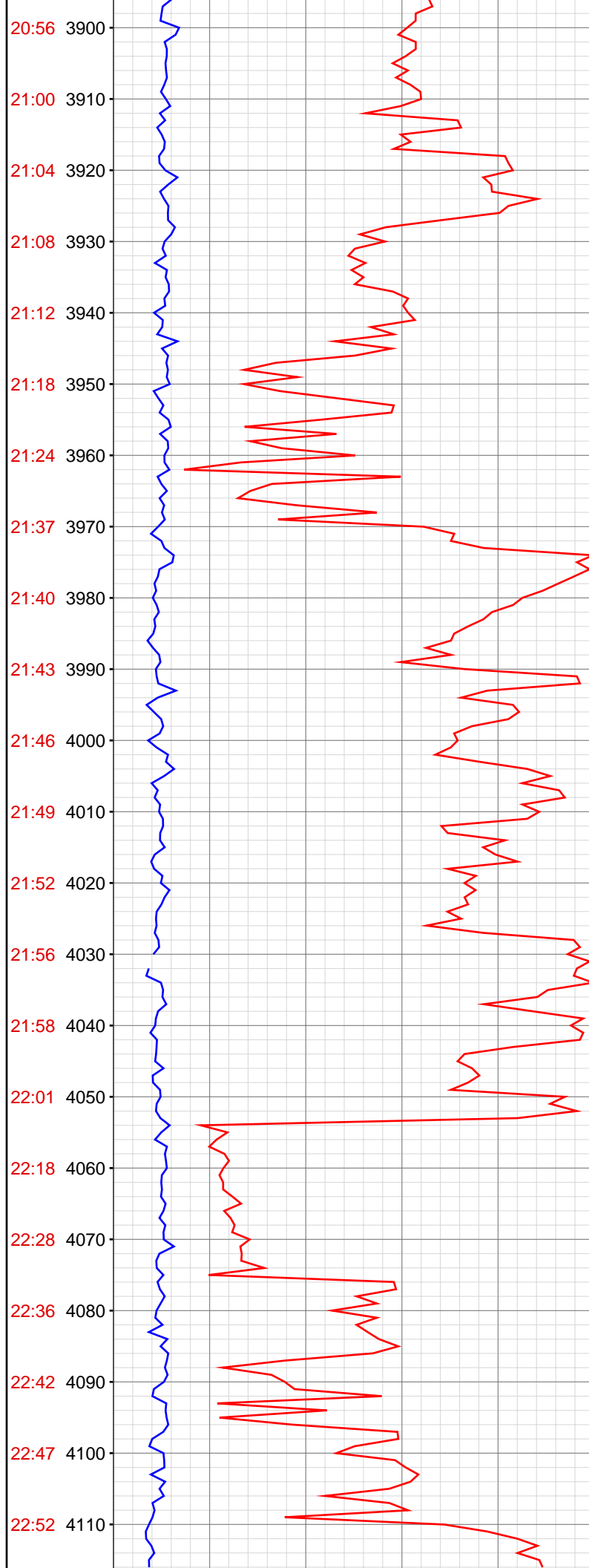
3705.32ft: ZWOB from SideKick sk-11-11-1250

3779.10ft: SURVEY 3725 16.1 INC 302.9 AZI
3779.10ft: Connection at 3781.0

3795.67ft: MUD WEIGHT 9.30
3796.00ft: MUD PH 9.90
3796.19ft: MUD VIS 48.00

3870.34ft: Connection at 3872.3 SURVEY 3817 16.0 INC 302.5 AZI
3870.34ft: ZDiffPressure from SideKick sk-11-11-1250

3887.96ft: ZDiffPressure from SideKick sk-11-11-1250



3899.02ft: MUD WEIGHT 9.30
3899.02ft: MUD VIS 51.00
3899.25ft: MUD PH 10.00

3934.38ft: Connection at 3963.7

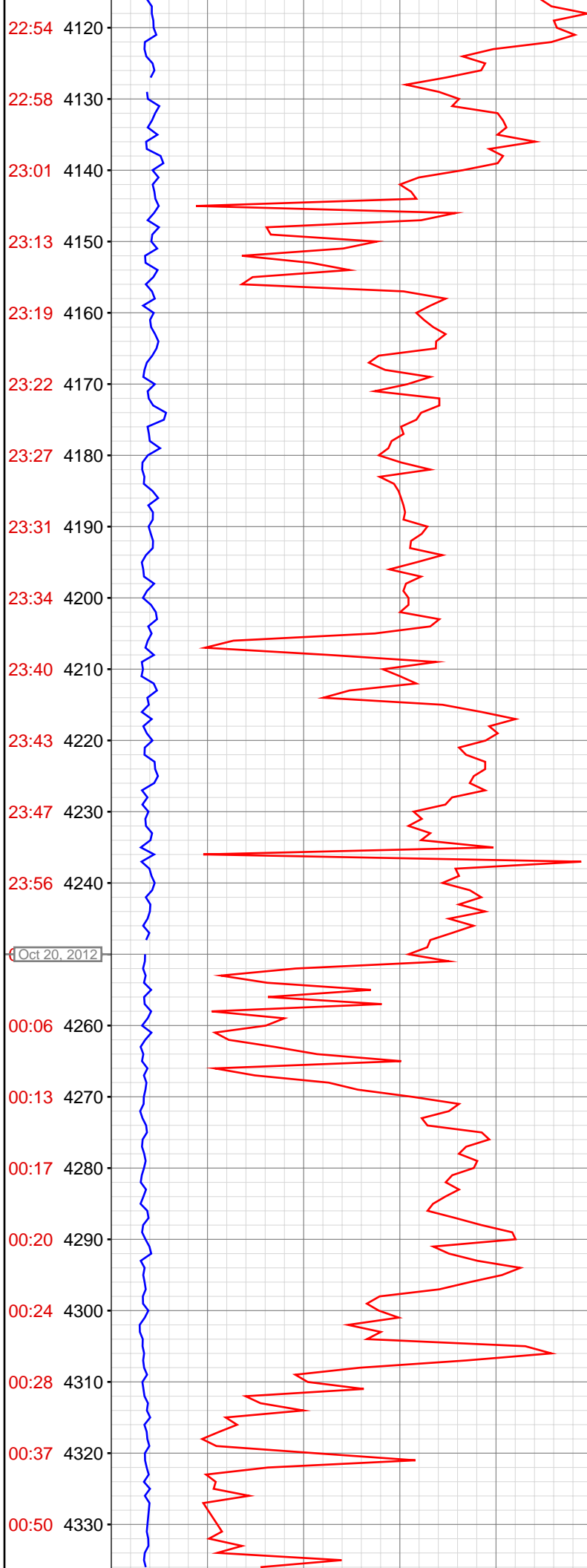
3961.65ft: SURVEY 3908 16.4 INC 300.3 AZI
3961.65ft: ZDiffPressure from SideKick sk-11-11-1250

4027.00ft: MUD WEIGHT 9.30
4027.53ft: MUD VIS 52.00
4027.53ft: MUD PH 9.90

4053.18ft: SURVEY 4000 16.0 INC 300.1 AZI
4053.18ft: ZDiffPressure from SideKick sk-11-11-1250
4053.18ft: Connection at 4055.3

4060.50ft: BUILDING VOL

4074.54ft: ZWOB from SideKick sk-11-11-1250



4132.71ft: MUD WEIGHT 9.30
4133.01ft: MUD VIS 48.00
4133.30ft: MUD PH 10.10

4144.16ft: SURVEY 4091 17.3 INC 300.1 AZI
4144.16ft: ZDiffPressure from SideKick sk-11-11-1250
4145.67ft: Connection at 4146.8

4231.00ft: HGAS_200: Light/Horn with no AC power detected
4232.78ft: SURVEY 4183 17.0 INC 301.1 AZI
4235.47ft: Connection at 4238.4

4241.99ft: MUD WEIGHT 9.30
4242.19ft: MUD VIS 49.00
4242.19ft: MUD PH 9.80

4326.67ft: SURVEY 4275 16.9 INC 302.5 AZI
4326.87ft: Connection at 4330.2
4327.89ft: IN TALLY: HOLE DEPTH SET TO 4330.2

4335.99ft: MUD WEIGHT 9.30

4335.99ft: MUD VIS 48.00
4335.99ft: MUD PH 9.90

4420.05ft: ZDiffPressure from SideKick sk-11-11-1250
4420.05ft: ZWOB from SideKick sk-11-11-1250
4420.05ft: ZDiffPressure from SideKick sk-11-11-1250
4420.24ft: Connection at 4421.9
4421.03ft: SURVEY 4366 17.1 INC 304.0 AZI

4455.41ft: MUD WEIGHT 9.35
4455.68ft: MUD VIS 54.00
4455.68ft: MUD PH 9.70

4511.58ft: ZDiffPressure from SideKick sk-11-11-1250
4511.58ft: Connection at 4513.2 SURVEY 4458 17.2 INC 303.4 AZI

4556.00ft: MUD WEIGHT 9.35

4556.20ft: MUD VIS 54.00
4556.20ft: MUD PH 9.90

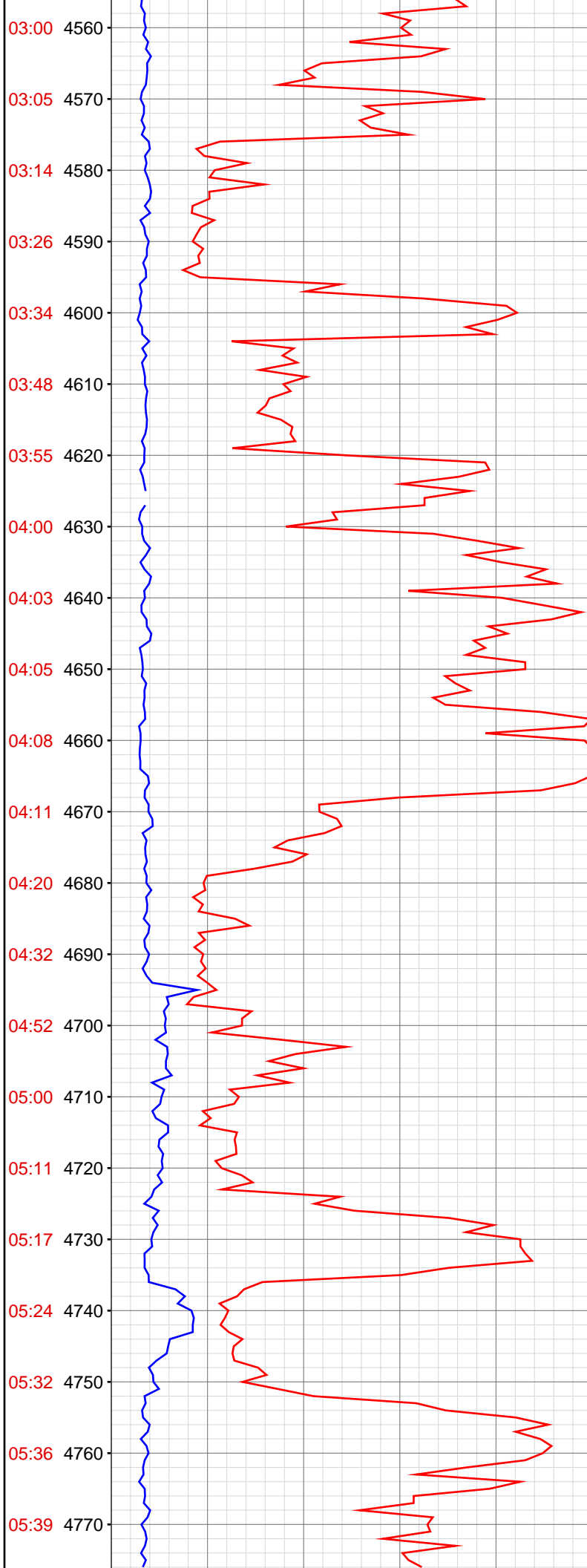
4603.05ft: SURVEY 4549 17.3 INC 305.4 AZI
4603.05ft: Connection at 4604.9
4603.05ft: ZDiffPressure from SideKick sk-11-11-1250
4603.05ft: ZDiffPressure from SideKick sk-11-11-1250

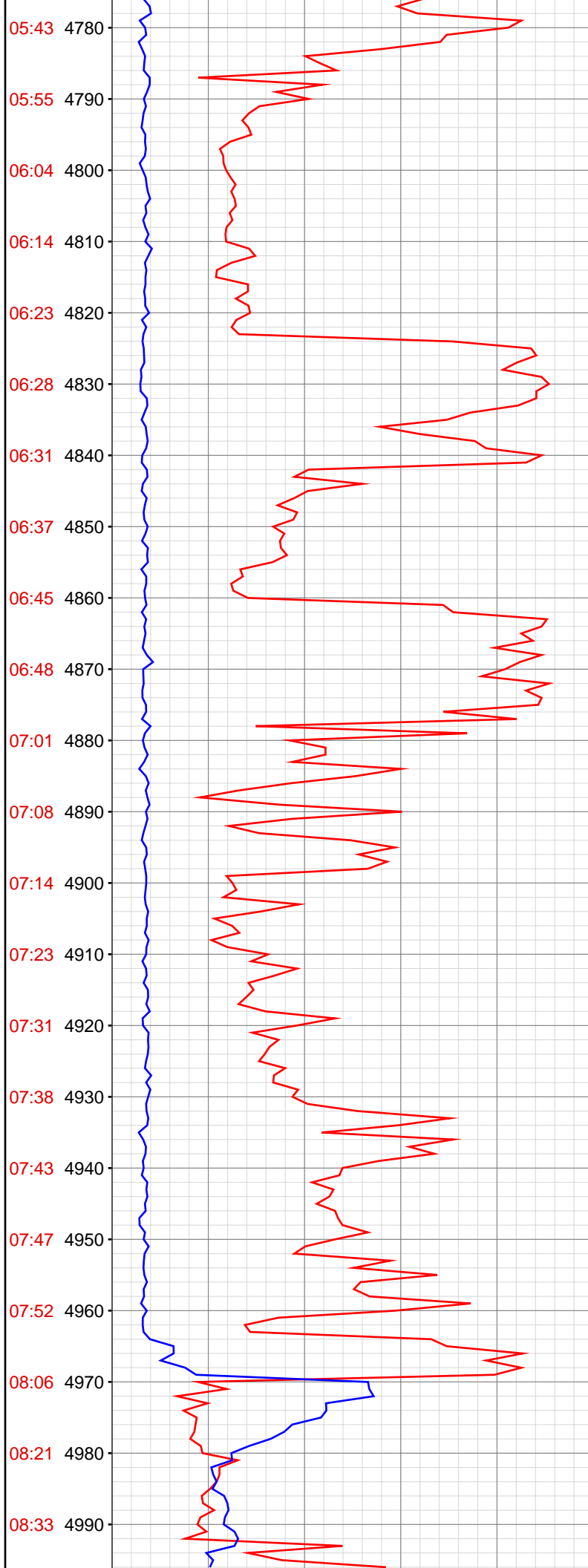
4619.32ft: MUD WEIGHT 9.35
4619.32ft: MUD VIS 47.00
4619.32ft: MUD PH 9.80

4694.36ft: Connection at 4696.4
4694.36ft: ZDiffPressure from SideKick sk-11-11-1250

4706.92ft: MUD WEIGHT 9.35
4706.92ft: MUD VIS 49.00
4706.92ft: MUD PH 9.90

4713.55ft: ZWOB from SideKick sk-11-11-1250



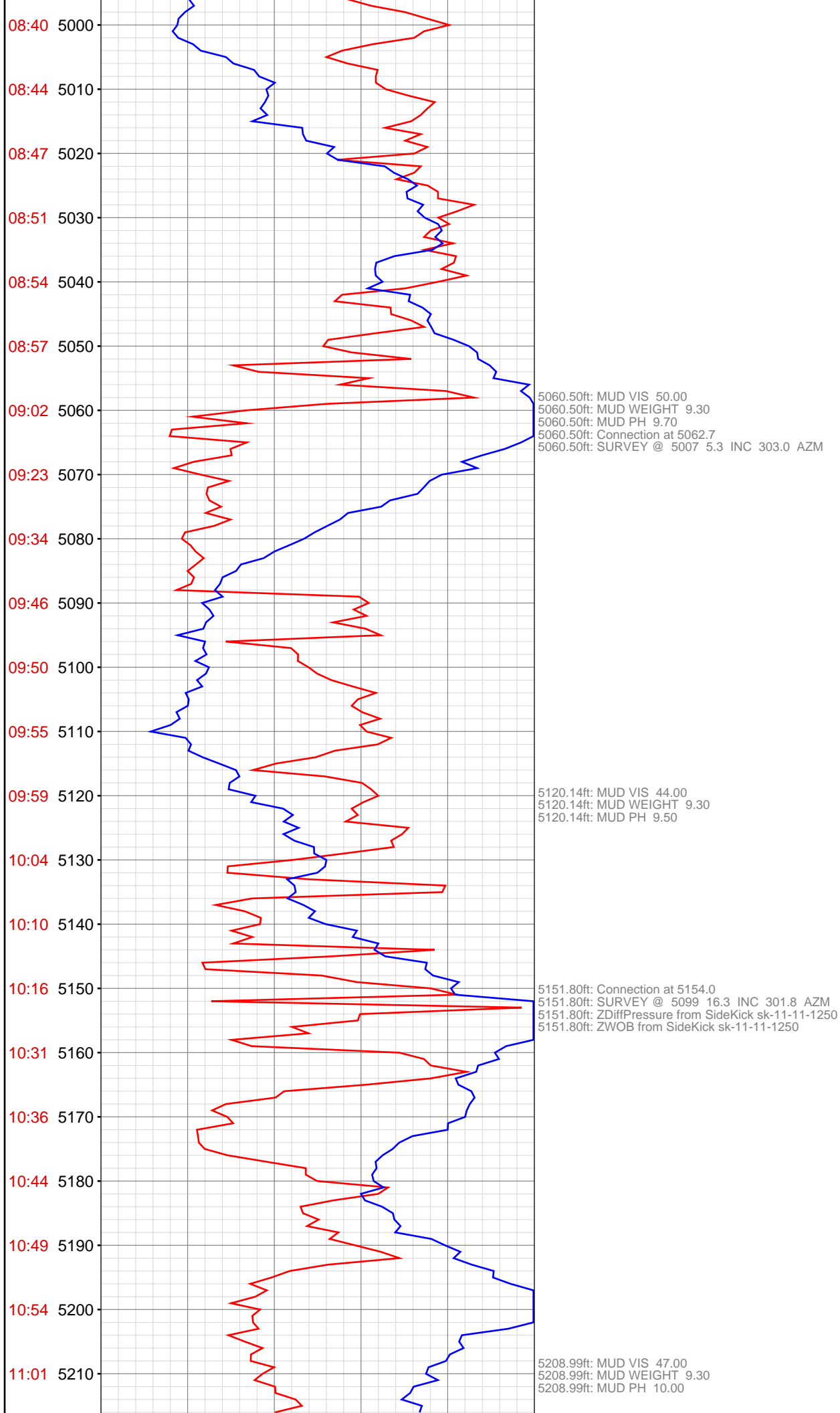


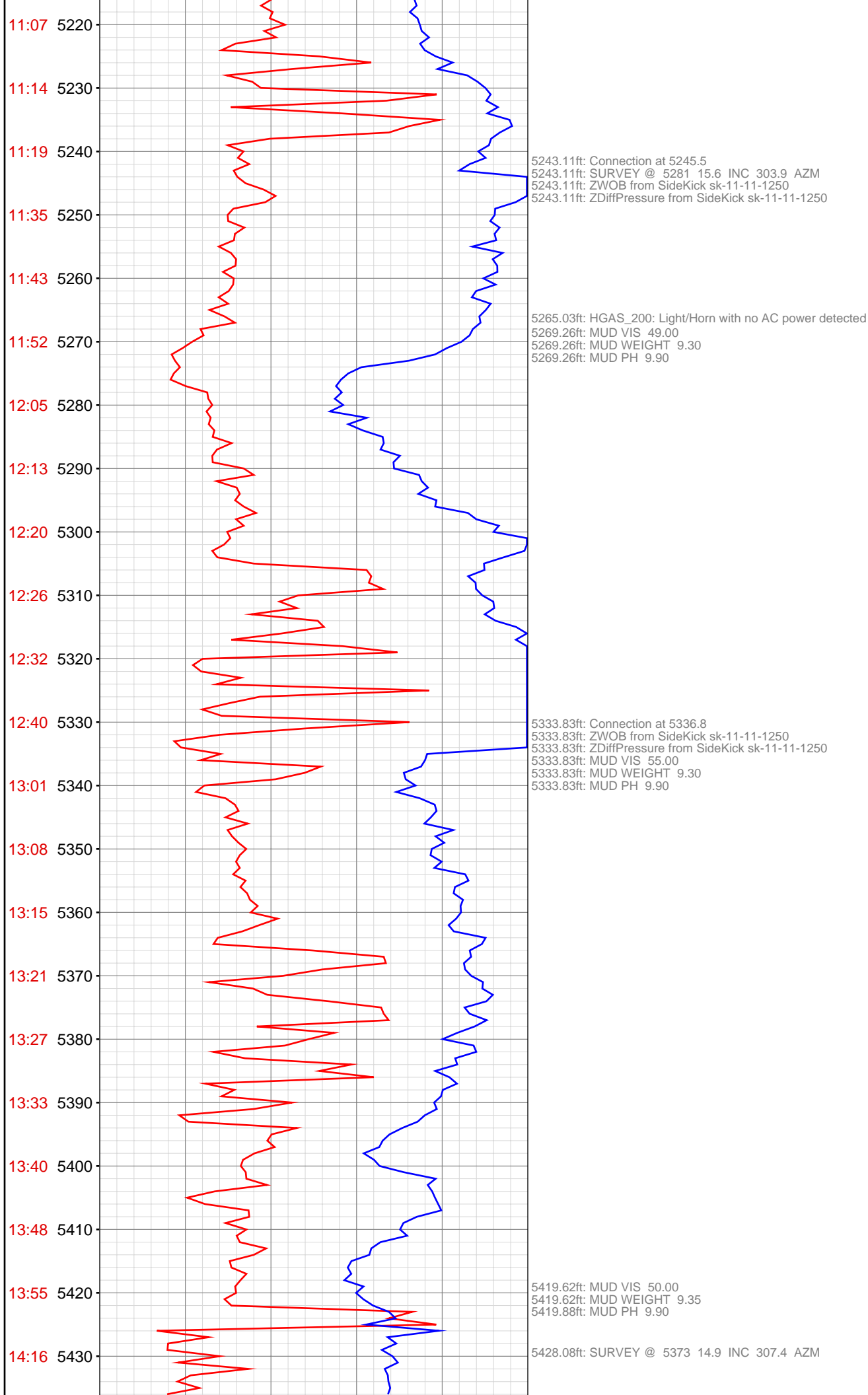
4786.22ft: HGAS_200: Light/Horn with no AC power detected
4786.22ft: Connection at 4788.0
4786.22ft: SURVEY @ 4733 16.0 INC 302.3 AZM
4786.22ft: ZDiffPressure from SideKick sk-11-11-1250

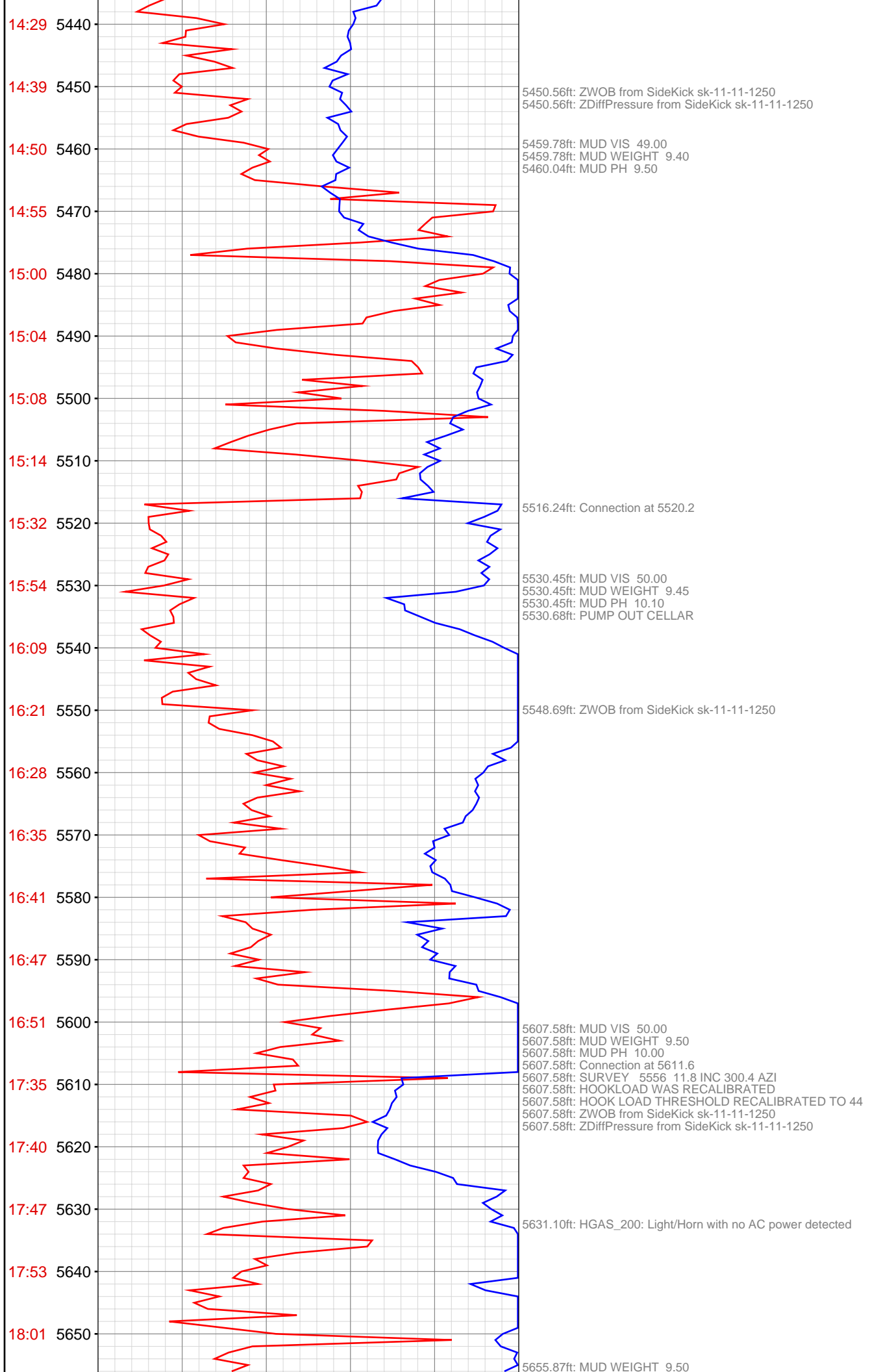
4806.46ft: MUD VIS 47.00
4806.63ft: MUD WEIGHT 9.35
4806.63ft: MUD PH 10.00

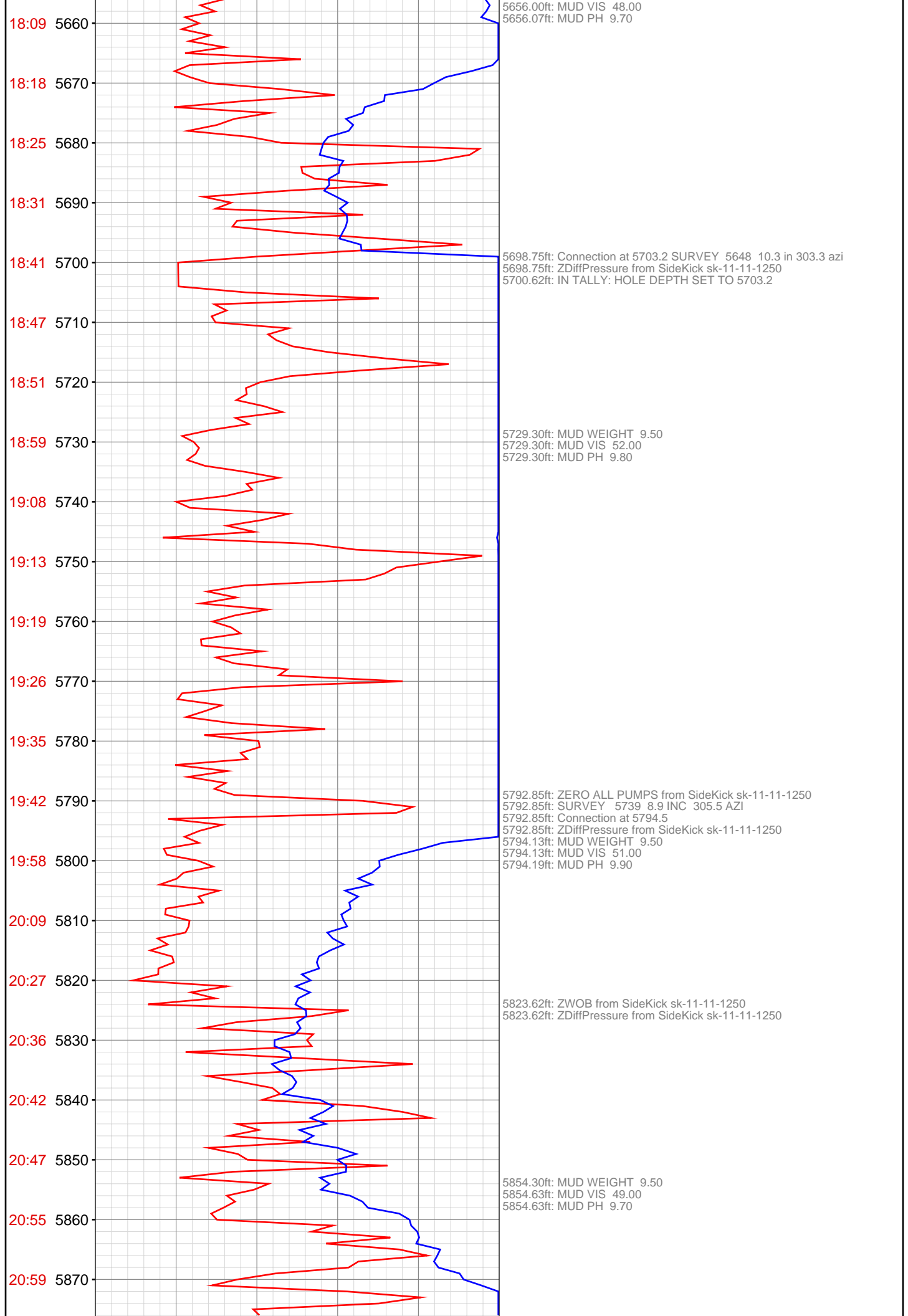
4877.85ft: Connection at 4879.5
4877.85ft: MUD VIS 50.00
4877.85ft: MUD WEIGHT 9.30
4877.85ft: MUD PH 9.50
4877.85ft: SURVEY @ 4824 15.6 INC 302.5 AZM
4877.85ft: ZDiffPressure from SideKick sk-11-11-1250
4877.85ft: ZWOB from SideKick sk-11-11-1250

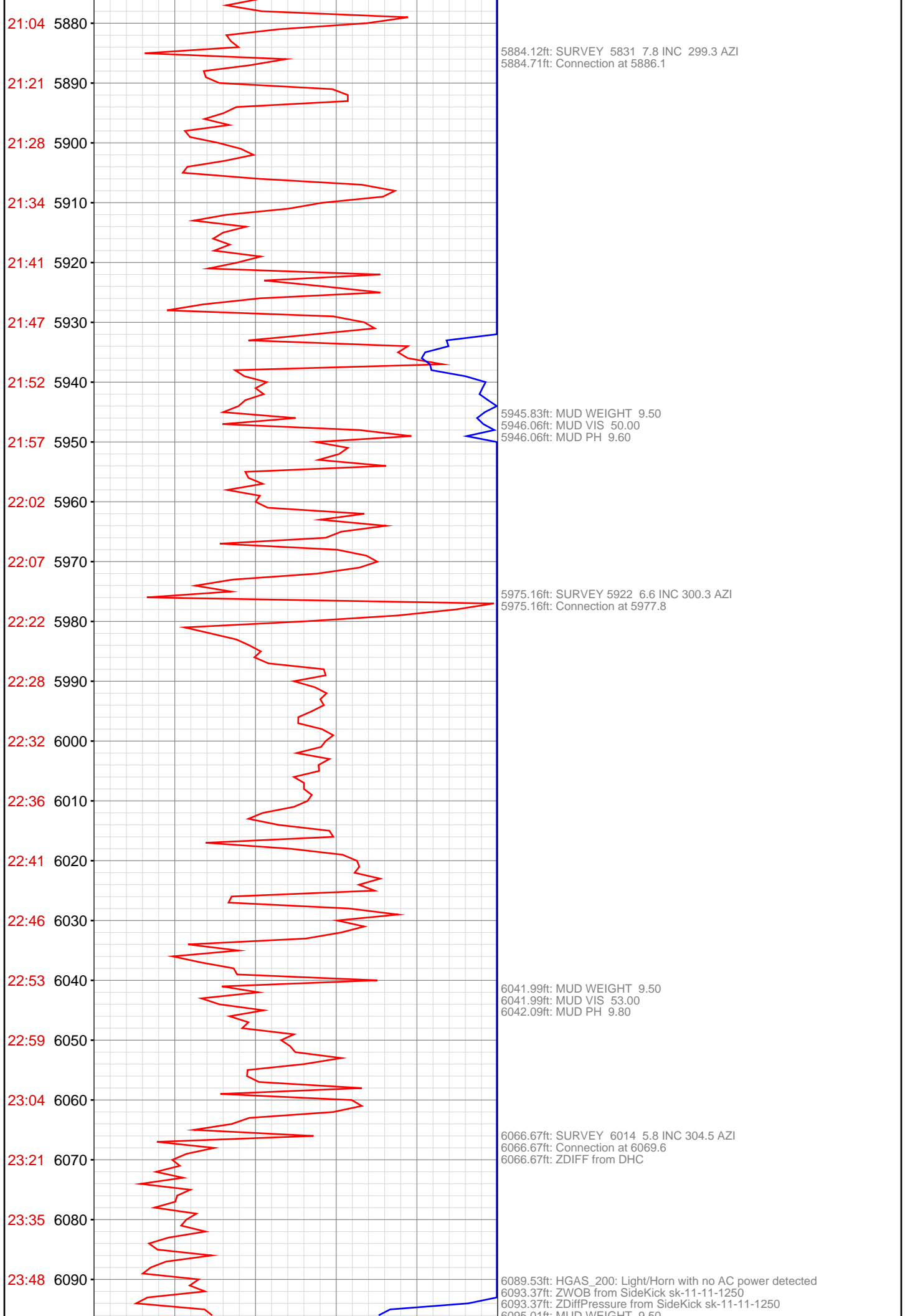
4963.22ft: MUD VIS 50.00
4963.22ft: MUD WEIGHT 9.30
4963.62ft: MUD PH 9.90
4969.06ft: Connection at 4971.3
4969.06ft: SURVEY @ 4916 14.8 INC 304.4 AZM











6095.01ft: MUD WEIGHT 9.50
6095.01ft: MUD VIS 54.00
6095.01ft: MUD PH 9.90

6157.38ft: Connection at 6161.5 SURVEY 6106 4.4 INC 296.7 AZI
6157.38ft: ZDiffPressure from SideKick sk-11-11-1250
6163.03ft: MUD WEIGHT 9.50
6163.03ft: MUD VIS 48.00
6163.03ft: MUD PH 9.80

6175.56ft: ZWOB from SideKick sk-11-11-1250
6175.56ft: ZDiffPressure from SideKick sk-11-11-1250

6236.12ft: MUD WEIGHT 9.50
6236.12ft: MUD VIS 51.00
6236.12ft: MUD PH 10.00

6249.02ft: Connection at 6253.4
6251.51ft: SURVEY 6198 4.1 INC 293.0 AZI

23:59 6100
Oct 21, 2012

00:03 6110

00:12 6120

00:20 6130

00:26 6140

00:31 6150

00:49 6160

01:04 6170

01:17 6180

01:23 6190

01:28 6200

01:35 6210

01:41 6220

01:48 6230

01:54 6240

02:08 6250

02:14 6260

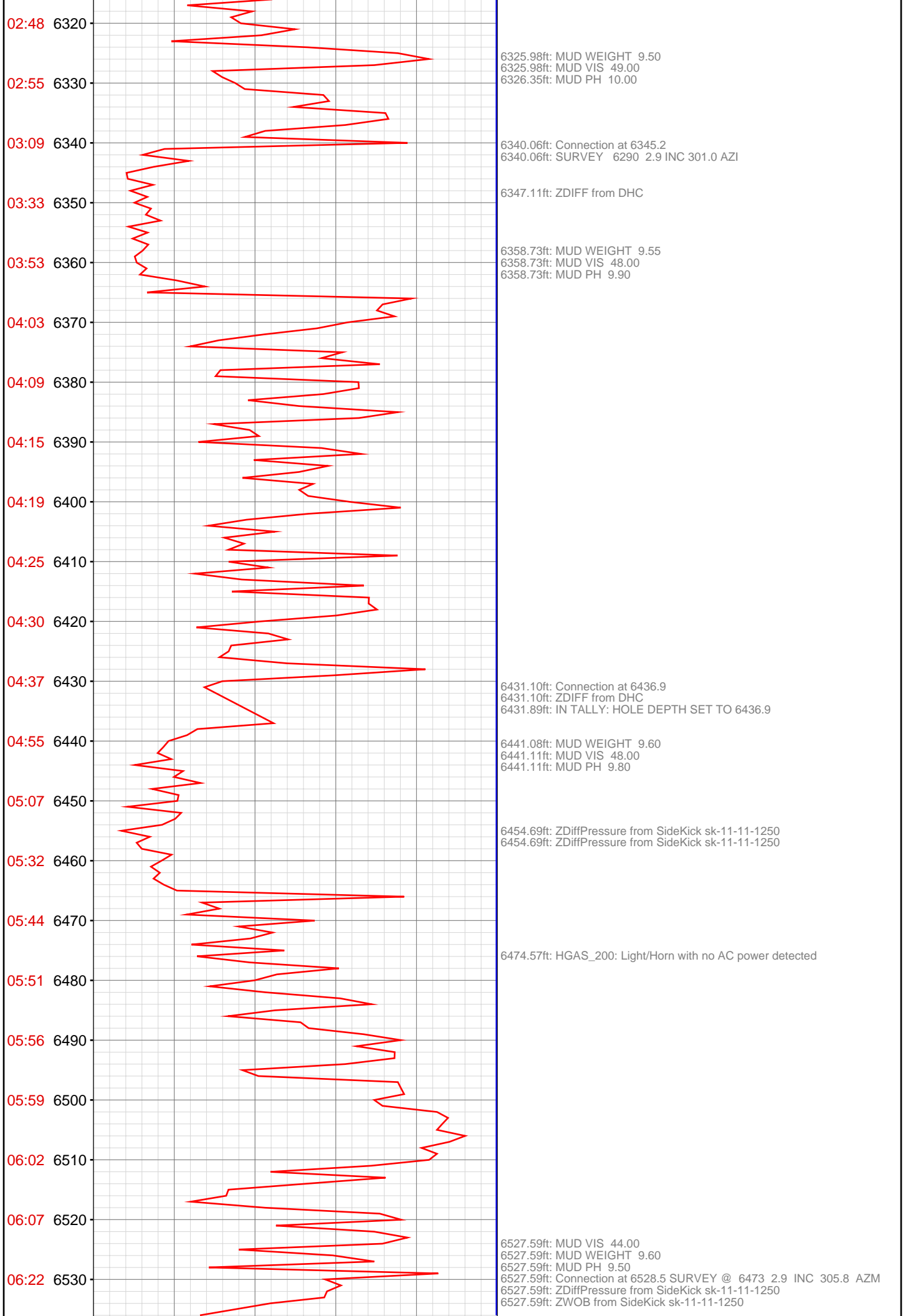
02:19 6270

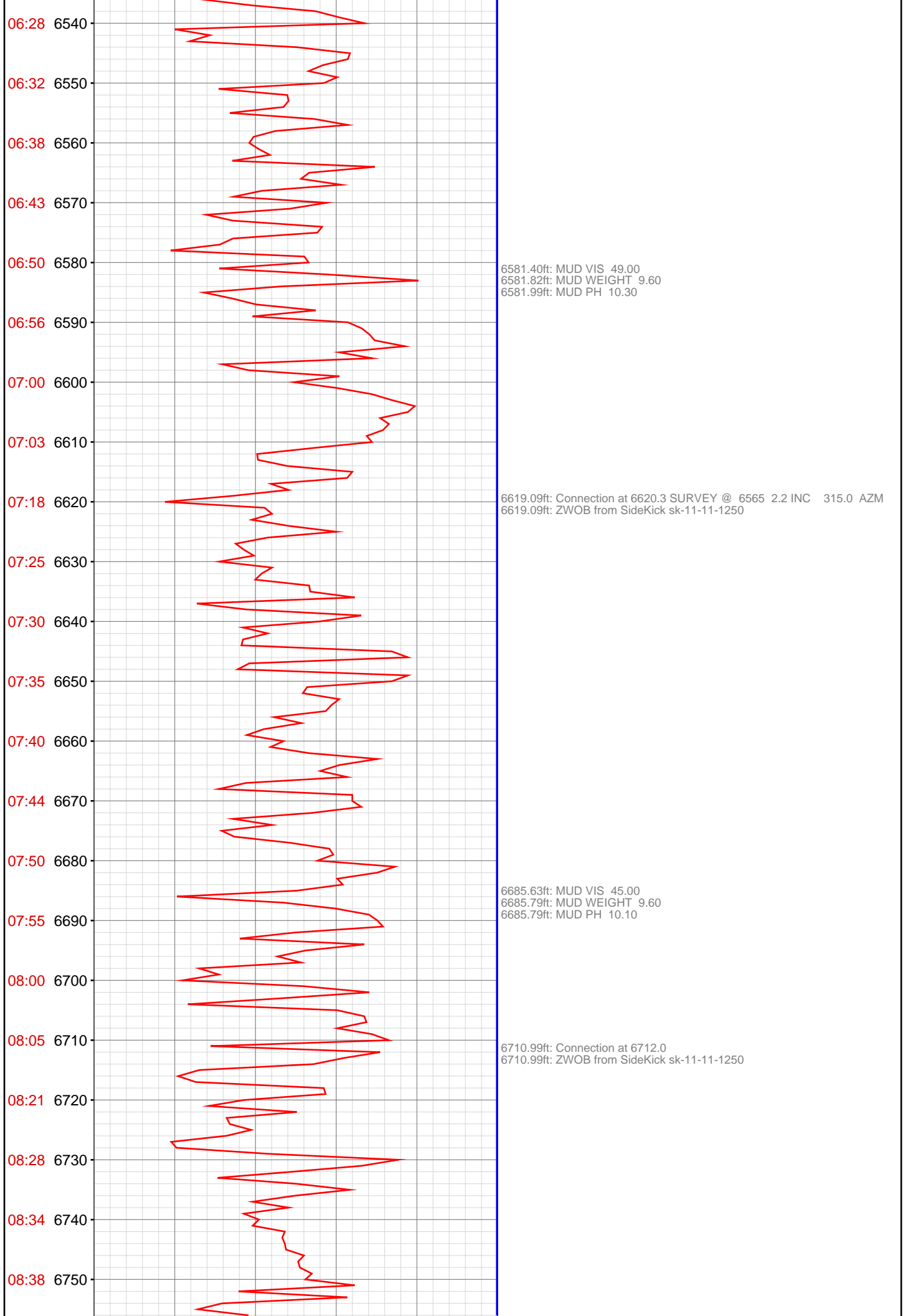
02:27 6280

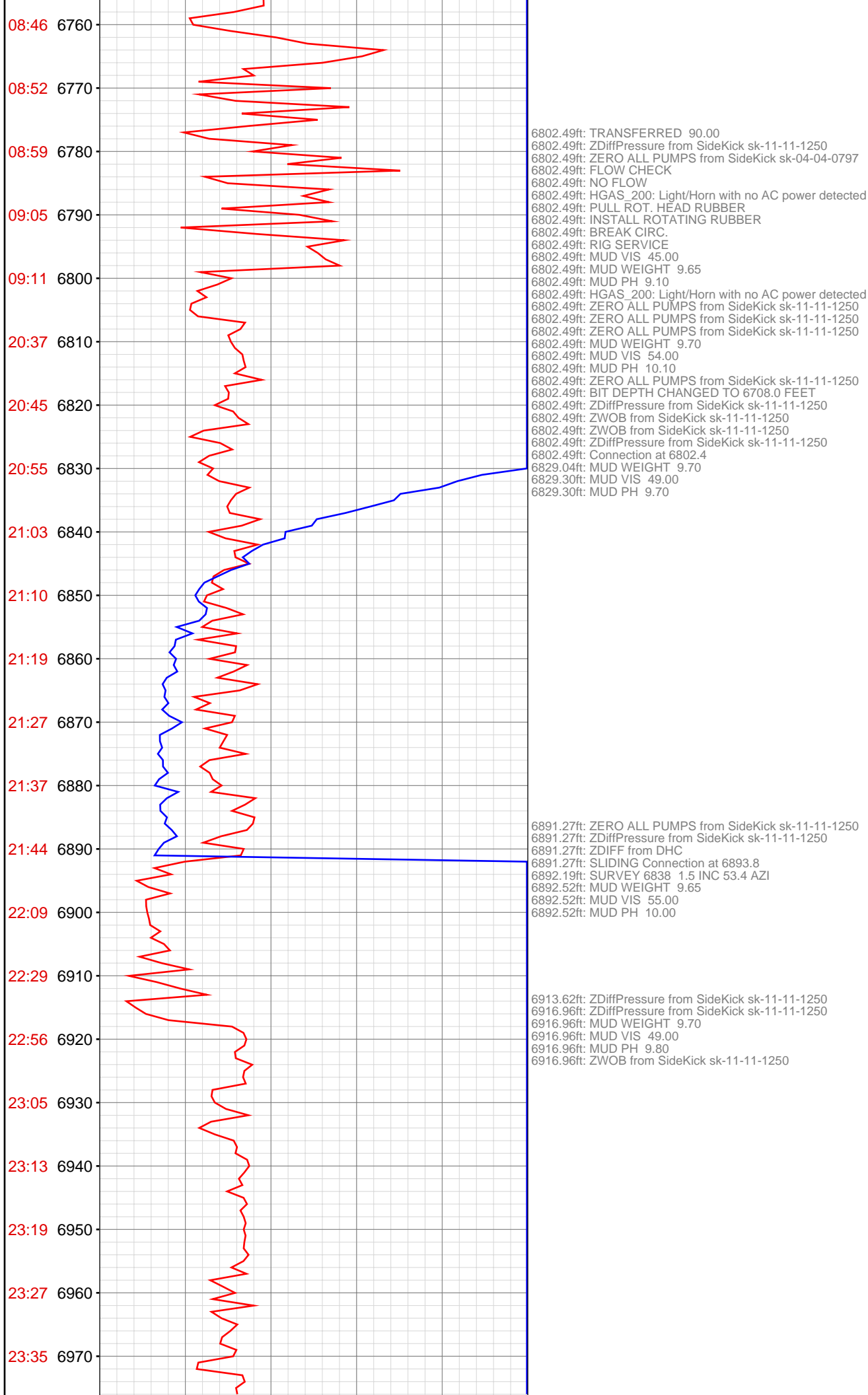
02:32 6290

02:37 6300

02:42 6310







23:44 6980

Oct 22, 2012

00:08 6990

00:26 7000

00:46 7010

01:05 7020

01:17 7030

01:24 7040

01:32 7050

01:39 7060

01:46 7070

02:01 7080

02:07 7090

02:13 7100

02:20 7110

02:28 7120

02:35 7130

02:42 7140

02:49 7150

02:56 7160

03:09 7170

03:16 7180

03:23 7190

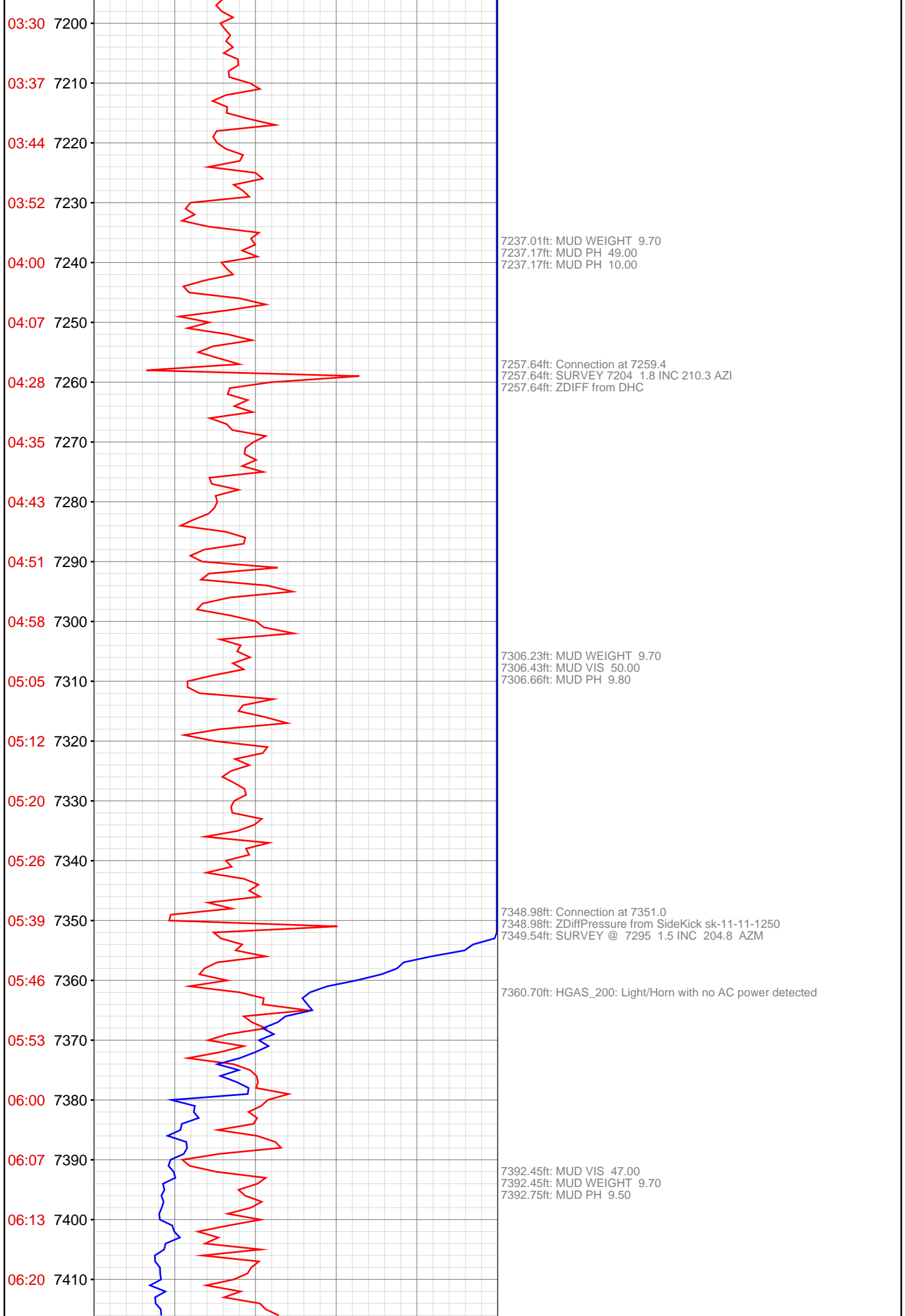
6982.74ft: HGAS_200: Light/Horn with no AC power detected
6982.74ft: ZDiffPressure from SideKick sk-11-11-1250
6982.74ft: Connection at 6984.6 SURVEY 6929 1.0 INC 32.8 AZI
6984.94ft: MUD WEIGHT 9.70
6984.94ft: MUD VIS 48.00
6985.01ft: MUD PH 9.90

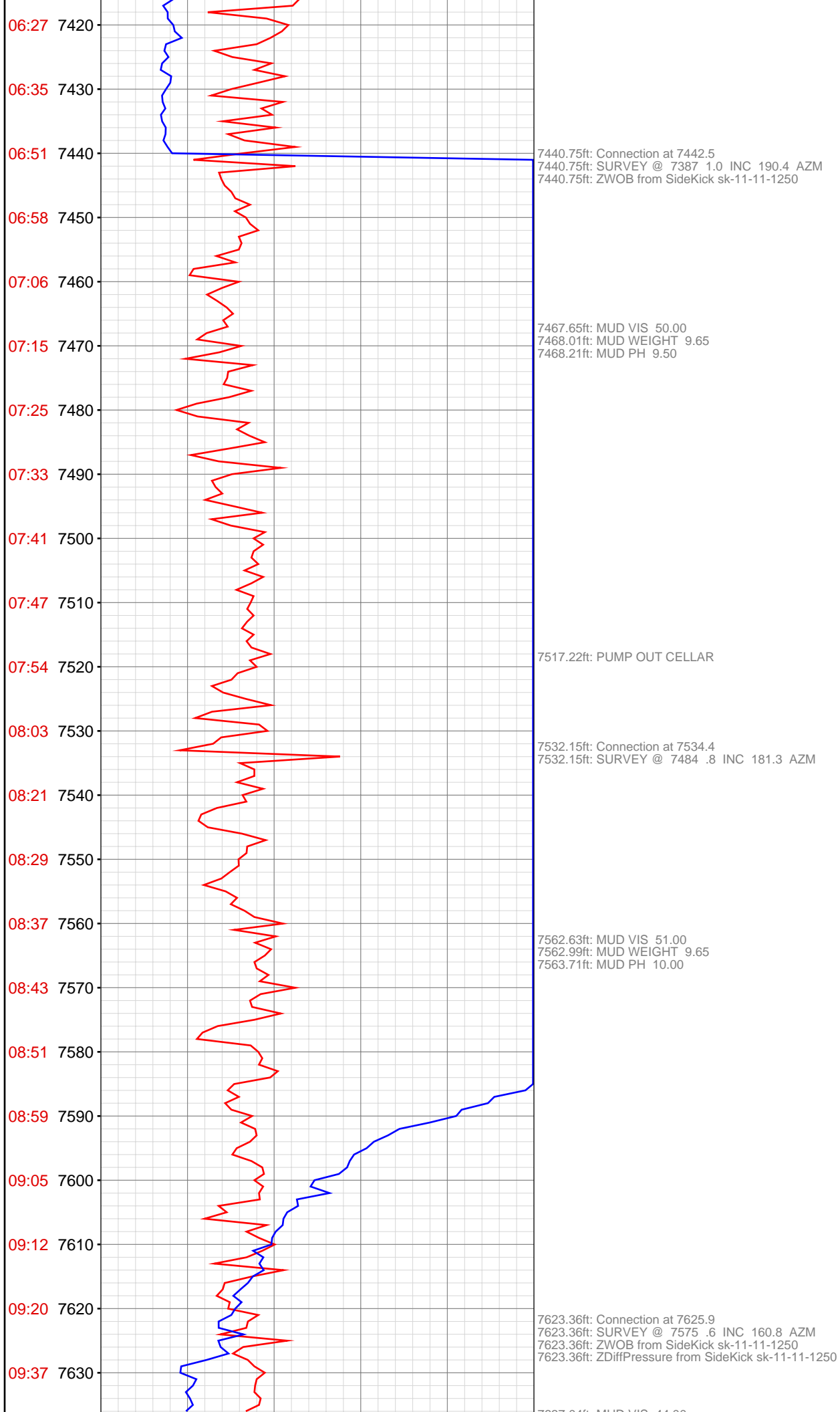
7015.16ft: MUD VIS 50.00
7015.16ft: MUD WEIGHT 9.70
7015.16ft: MUD PH 9.90
7020.37ft: ZWOB from SideKick sk-11-11-1250
7020.37ft: ZDiffPressure from SideKick sk-11-11-1250

7074.21ft: MUD WEIGHT 9.70
7074.21ft: MUD VIS 46.00
7074.21ft: MUD PH 9.80
7074.21ft: Connection at 7076.1 SURVEY 7021 2.1 INC 219.0 AZI

7155.32ft: MUD WEIGHT 9.70
7155.32ft: MUD VIS 47.00
7155.61ft: MUD PH 9.50

7165.09ft: SURVEY 7112 2.0 INC 218.0 AZI
7165.42ft: Connection at 7167.6
7165.42ft: ZDiffPressure from SideKick sk-11-11-1250
7166.99ft: IN TALLY: HOLE DEPTH SET TO 7167.7



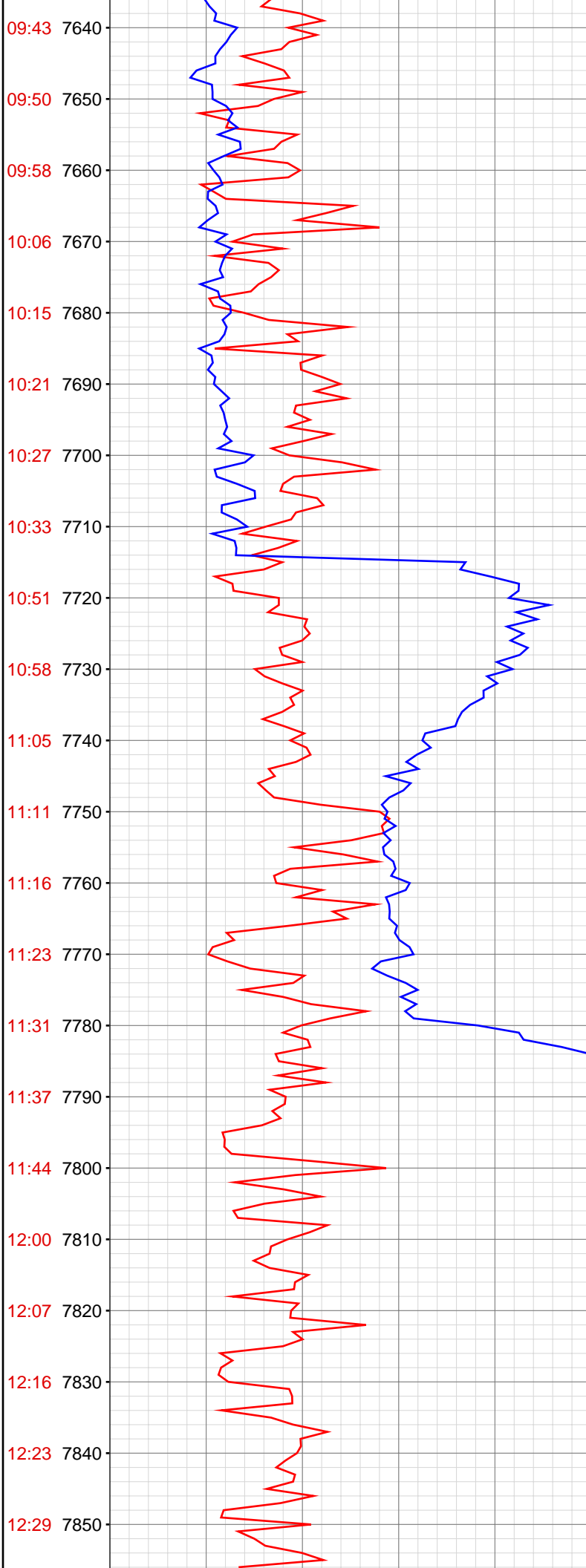


7637.04ft: MUD VIS 44.00
7637.34ft: MUD WEIGHT 9.70
7637.34ft: MUD PH 9.90

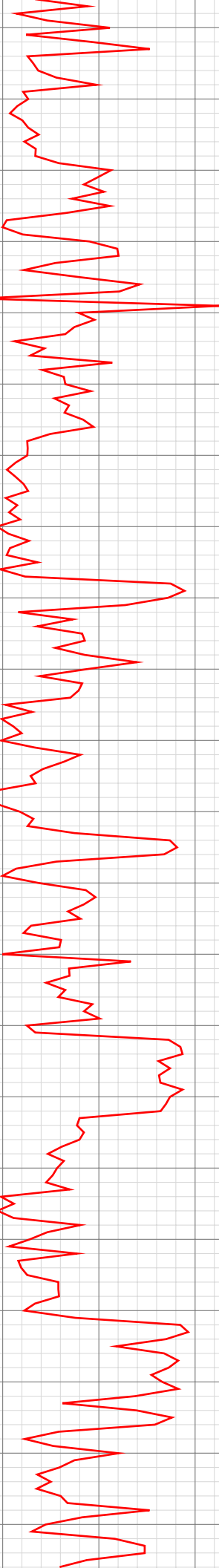
7711.12ft: MUD VIS 53.00
7711.61ft: MUD WEIGHT 9.60
7712.01ft: MUD PH 9.70
7715.06ft: SURVEY @ 7667 .5 INC 136.0 AZM Connection at 7717.8
7715.06ft: ZWOB from SideKick sk-11-11-1250

7774.34ft: MUD VIS 56.00
7774.34ft: MUD WEIGHT 9.65
7774.34ft: MUD PH 9.90

7803.54ft: HGAS_200: Light/Horn with no AC power detected
7806.63ft: Connection at 7808.9
7806.63ft: ZWOB from SideKick sk-11-11-1250
7811.52ft: SURVEY @7758 .7 INC 118.0 AZM



12:37 7860
12:45 7870
12:55 7880
13:02 7890
13:18 7900
13:26 7910
13:33 7920
13:45 7930
13:53 7940
14:00 7950
14:09 7960
14:19 7970
14:28 7980
14:44 7990
14:51 8000
14:56 8010
15:02 8020
15:13 8030
15:21 8040
15:25 8050
15:31 8060
15:39 8070



7875.56ft: MUD VIS 47.00
7875.72ft: MUD WEIGHT 9.65
7875.85ft: MUD PH 9.80

7897.80ft: Connection at 7900.4
7897.80ft: ZWOB from SideKick sk-11-11-1250
7897.80ft: ZDiffPressure from SideKick sk-11-11-1250
7897.80ft: SURVEY @ 7850 1.0 INC 92.8 AZM

7931.23ft: MUD VIS 50.00
7931.43ft: MUD WEIGHT 9.65
7931.82ft: MUD PH 9.80

7989.24ft: Connection at 7992.2 SURVEY @ 7942 1.2 INC 73.7 AZM
7989.24ft: ZWOB from SideKick sk-11-11-1250
7989.24ft: MUD VIS 55.00
7989.24ft: MUD WEIGHT 9.65
7989.24ft: MUD PH 9.90

8066.63ft: MUD VIS 51.00
8067.09ft: MUD WEIGHT 9.70
8067.42ft: MUD PH 9.60

