

BILL BARRETT CORP

WELD COUNTY, COLORADO

Pappenheim 6-62-26-8H

Pappenheim 6-62-26-8H

Wellbore #1

Plan: Design #1

Standard Planning Report

05 March, 2013



Bill Barrett Corporation

SITE DETAILS: Pappenheim 6-62-26-8H
Briggsdale

Site Latitude: 40° 27' 58.896 N
Site Longitude: 104° 17' 50.712 W

COMPANY DETAILS: BILL BARRETT CORP

Calculation Method: Minimum Curvature
Error System: ISCWSA
Scan Method: Closest Approach 3D
Error Surface: Elliptical Conic
Warning Method: Error Ratio

Positional Uncertainty: 0.0
Convergence: 0.78
Local North: True

WELL DETAILS: Pappenheim 6-62-26-8H

Ground Level: 4735.0
Northing: 1415004.17
Easting: 3334592.88
Latitude: 40° 27' 58.896 N
Longitude: 104° 17' 50.712 W
Slot

WELLBORE TARGET DETAILS (LAT/LONG)

Name	TVD	+N/-S	+E/-W	Latitude	Longitude	Shape
Pappenheim 6-62-26-8H PBHL	6327.0	-837.6	4048.5	40° 27' 50.616 N	104° 16' 58.332 W	Point
Pappenheim 6-62-26-8H LP	6354.0	-874.3	253.2	40° 27' 50.256 N	104° 17' 47.436 W	Point

SECTION DETAILS

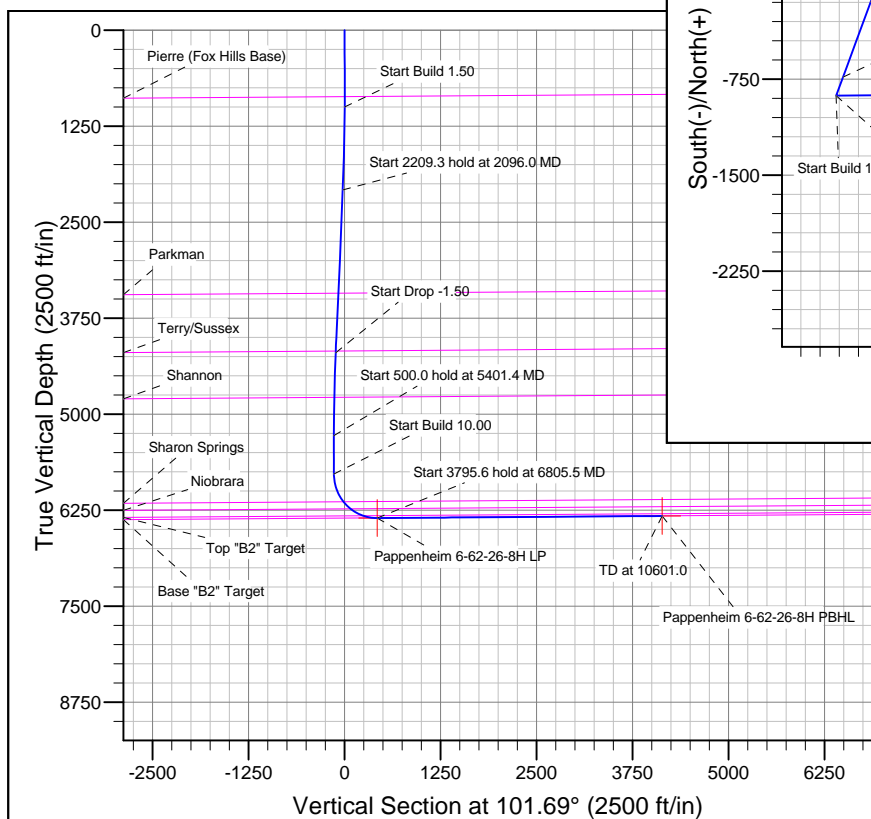
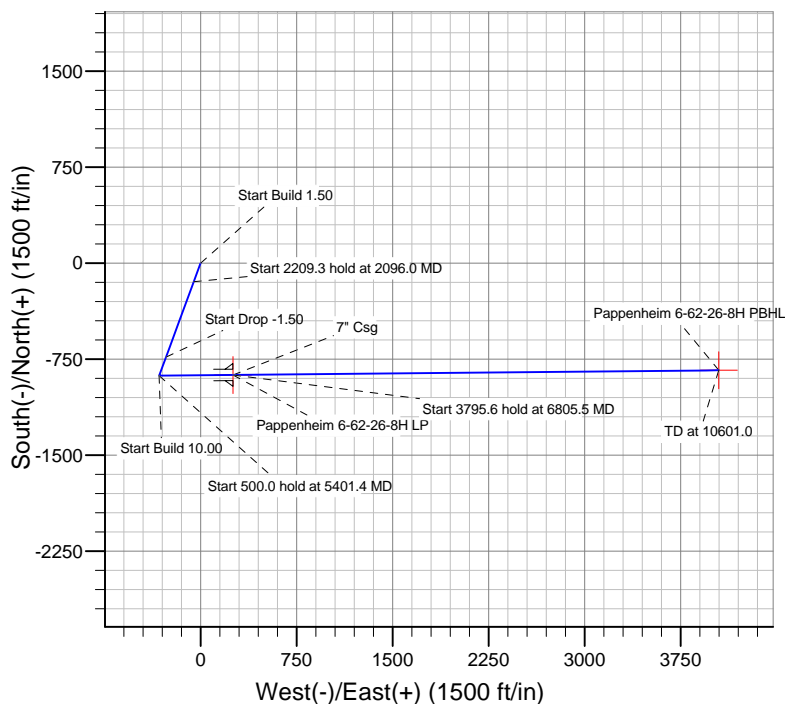
Sec	MD	Inc	Azi	TVD	+N/-S	+E/-W	DLeg	TFace	VSec	Target
1	0.0	0.00	0.00	0.0	0.0	0.0	0.00	0.00	0.0	
2	1000.0	0.00	0.00	1000.0	0.0	0.0	0.00	0.00	0.0	
3	2096.0	16.44	200.20	2081.1	-146.6	-53.9	1.50	200.20	-23.1	
4	4305.3	16.44	200.20	4200.0	-733.4	-269.9	0.00	0.00	-115.7	
5	5401.4	0.00	0.00	5281.1	-879.9	-323.8	1.50	180.00	-138.8	
6	5901.4	0.00	0.00	5781.1	-879.9	-323.8	0.00	0.00	-138.8	
7	6805.5	90.41	89.45	6354.0	-874.4	253.2	10.00	89.45	425.1	
8	10600.8	90.41	89.45	6327.0	-837.7	4048.3	0.00	0.00	4134.0	Pappenheim 6-62-26-8H PBHL

FORMATION TOP DETAILS

TVDPath	MDPath	Formation
866.0	866.0	Pierre (Fox Hills Base)
3427.4	3499.8	Parkman
4180.0	4284.4	Terry/Sussex
4783.3	4902.2	Shannon
6142.5	6292.4	Sharon Springs
6234.8	6425.0	Niobrara
6326.5	6623.1	Top "B2" Target
6352.6	6760.1	Base "B2" Target

CASING DETAILS

TVD	MD	Name	Size
6354.0	6805.5	7" Csg	7



Azimuths to True North
Magnetic North: 8.38°

Magnetic Field
Strength: 53034.3snT
Dip Angle: 67.12°
Date: 3/5/2013
Model: IGRF2010

Bill Barrett Corp

Planning Report

Database:	Compass	Local Co-ordinate Reference:	Well Pappenheim 6-62-26-8H
Company:	BILL BARRETT CORP	TVD Reference:	KB @ 4750.0ft (Original Well Elev)
Project:	WELD COUNTY, COLORADO	MD Reference:	KB @ 4750.0ft (Original Well Elev)
Site:	Pappenheim 6-62-26-8H	North Reference:	True
Well:	Pappenheim 6-62-26-8H	Survey Calculation Method:	Minimum Curvature
Wellbore:	Wellbore #1		
Design:	Design #1		

Project	WELD COUNTY, COLORADO		
Map System:	US State Plane 1983	System Datum:	Mean Sea Level
Geo Datum:	North American Datum 1983		
Map Zone:	Colorado Northern Zone		

Site		Pappenheim 6-62-26-8H			
Site Position:		Northing:	1,415,004.17 ft	Latitude:	40° 27' 58.896 N
From:	Lat/Long	Easting:	3,334,592.88 ft	Longitude:	104° 17' 50.712 W
Position Uncertainty:	0.0 ft	Slot Radius:	"	Grid Convergence:	0.78 °

Well		Pappenheim 6-62-26-8H				
Well Position	+N/-S	0.0 ft	Northing:	1,415,004.17 ft	Latitude:	40° 27' 58.896 N
	+E/-W	0.0 ft	Easting:	3,334,592.88 ft	Longitude:	104° 17' 50.712 W
Position Uncertainty		0.0 ft	Wellhead Elevation:	ft	Ground Level:	4,735.0 ft

Wellbore	Wellbore #1				
Magnetics	Model Name	Sample Date	Declination (°)	Dip Angle (°)	Field Strength (nT)
	IGRF2010	3/5/2013	8.38	67.12	53,034

Design	Design #1				
Audit Notes:					
Version:	Phase:	PLAN	Tie On Depth:	0.0	
Vertical Section:	Depth From (TVD) (ft)	+N/-S (ft)	+E/-W (ft)	Direction (°)	
	0.0	0.0	0.0	101.69	

Plan Sections										
Measured Depth (ft)	Inclination (°)	Azimuth (°)	Vertical Depth (ft)	+N/-S (ft)	+E/-W (ft)	Dogleg Rate (°/100ft)	Build Rate (°/100ft)	Turn Rate (°/100ft)	TFO (°)	Target
0.0	0.00	0.00	0.0	0.0	0.0	0.00	0.00	0.00	0.00	
1,000.0	0.00	0.00	1,000.0	0.0	0.0	0.00	0.00	0.00	0.00	
2,096.0	16.44	200.20	2,081.1	-146.6	-53.9	1.50	1.50	0.00	200.20	
4,305.3	16.44	200.20	4,200.0	-733.4	-269.9	0.00	0.00	0.00	0.00	
5,401.4	0.00	0.00	5,281.1	-879.9	-323.8	1.50	-1.50	0.00	180.00	
5,901.4	0.00	0.00	5,781.1	-879.9	-323.8	0.00	0.00	0.00	0.00	
6,805.5	90.41	89.45	6,354.0	-874.4	253.2	10.00	10.00	0.00	89.45	
10,600.8	90.41	89.45	6,327.0	-837.7	4,048.3	0.00	0.00	0.00	0.00	Pappenheim 6-62-26-

Bill Barrett Corp

Planning Report

Database:	Compass	Local Co-ordinate Reference:	Well Pappenheim 6-62-26-8H
Company:	BILL BARRETT CORP	TVD Reference:	KB @ 4750.0ft (Original Well Elev)
Project:	WELD COUNTY, COLORADO	MD Reference:	KB @ 4750.0ft (Original Well Elev)
Site:	Pappenheim 6-62-26-8H	North Reference:	True
Well:	Pappenheim 6-62-26-8H	Survey Calculation Method:	Minimum Curvature
Wellbore:	Wellbore #1		
Design:	Design #1		

Planned Survey									
Measured Depth (ft)	Inclination (°)	Azimuth (°)	Vertical Depth (ft)	+N/-S (ft)	+E/-W (ft)	Vertical Section (ft)	Dogleg Rate (°/100ft)	Build Rate (°/100ft)	Turn Rate (°/100ft)
0.0	0.00	0.00	0.0	0.0	0.0	0.0	0.00	0.00	0.00
100.0	0.00	0.00	100.0	0.0	0.0	0.0	0.00	0.00	0.00
200.0	0.00	0.00	200.0	0.0	0.0	0.0	0.00	0.00	0.00
300.0	0.00	0.00	300.0	0.0	0.0	0.0	0.00	0.00	0.00
400.0	0.00	0.00	400.0	0.0	0.0	0.0	0.00	0.00	0.00
500.0	0.00	0.00	500.0	0.0	0.0	0.0	0.00	0.00	0.00
600.0	0.00	0.00	600.0	0.0	0.0	0.0	0.00	0.00	0.00
700.0	0.00	0.00	700.0	0.0	0.0	0.0	0.00	0.00	0.00
800.0	0.00	0.00	800.0	0.0	0.0	0.0	0.00	0.00	0.00
866.0	0.00	0.00	866.0	0.0	0.0	0.0	0.00	0.00	0.00
Pierre (Fox Hills Base)									
900.0	0.00	0.00	900.0	0.0	0.0	0.0	0.00	0.00	0.00
1,000.0	0.00	0.00	1,000.0	0.0	0.0	0.0	0.00	0.00	0.00
Start Build 1.50									
1,100.0	1.50	200.20	1,100.0	-1.2	-0.5	-0.2	1.50	1.50	0.00
1,200.0	3.00	200.20	1,199.9	-4.9	-1.8	-0.8	1.50	1.50	0.00
1,300.0	4.50	200.20	1,299.7	-11.1	-4.1	-1.7	1.50	1.50	0.00
1,400.0	6.00	200.20	1,399.3	-19.6	-7.2	-3.1	1.50	1.50	0.00
1,500.0	7.50	200.20	1,498.6	-30.7	-11.3	-4.8	1.50	1.50	0.00
1,600.0	9.00	200.20	1,597.5	-44.1	-16.2	-7.0	1.50	1.50	0.00
1,700.0	10.50	200.20	1,696.1	-60.0	-22.1	-9.5	1.50	1.50	0.00
1,800.0	12.00	200.20	1,794.2	-78.3	-28.8	-12.4	1.50	1.50	0.00
1,900.0	13.50	200.20	1,891.7	-99.0	-36.4	-15.6	1.50	1.50	0.00
2,000.0	15.00	200.20	1,988.6	-122.1	-44.9	-19.3	1.50	1.50	0.00
2,096.0	16.44	200.20	2,081.1	-146.6	-53.9	-23.1	1.50	1.50	0.00
Start 2209.3 hold at 2096.0 MD									
2,100.0	16.44	200.20	2,084.9	-147.6	-54.3	-23.3	0.00	0.00	0.00
2,200.0	16.44	200.20	2,180.8	-174.2	-64.1	-27.5	0.00	0.00	0.00
2,300.0	16.44	200.20	2,276.7	-200.7	-73.9	-31.7	0.00	0.00	0.00
2,400.0	16.44	200.20	2,372.6	-227.3	-83.6	-35.9	0.00	0.00	0.00
2,500.0	16.44	200.20	2,468.5	-253.9	-93.4	-40.0	0.00	0.00	0.00
2,600.0	16.44	200.20	2,564.4	-280.4	-103.2	-44.2	0.00	0.00	0.00
2,700.0	16.44	200.20	2,660.3	-307.0	-113.0	-48.4	0.00	0.00	0.00
2,800.0	16.44	200.20	2,756.2	-333.5	-122.7	-52.6	0.00	0.00	0.00
2,900.0	16.44	200.20	2,852.1	-360.1	-132.5	-56.8	0.00	0.00	0.00
3,000.0	16.44	200.20	2,948.1	-386.7	-142.3	-61.0	0.00	0.00	0.00
3,100.0	16.44	200.20	3,044.0	-413.2	-152.1	-65.2	0.00	0.00	0.00
3,200.0	16.44	200.20	3,139.9	-439.8	-161.8	-69.4	0.00	0.00	0.00
3,300.0	16.44	200.20	3,235.8	-466.3	-171.6	-73.6	0.00	0.00	0.00
3,400.0	16.44	200.20	3,331.7	-492.9	-181.4	-77.8	0.00	0.00	0.00
3,499.8	16.44	200.20	3,427.4	-519.4	-191.1	-81.9	0.00	0.00	0.00
Parkman									
3,500.0	16.44	200.20	3,427.6	-519.5	-191.2	-81.9	0.00	0.00	0.00
3,600.0	16.44	200.20	3,523.5	-546.0	-200.9	-86.1	0.00	0.00	0.00
3,700.0	16.44	200.20	3,619.4	-572.6	-210.7	-90.3	0.00	0.00	0.00
3,800.0	16.44	200.20	3,715.4	-599.2	-220.5	-94.5	0.00	0.00	0.00
3,900.0	16.44	200.20	3,811.3	-625.7	-230.3	-98.7	0.00	0.00	0.00
4,000.0	16.44	200.20	3,907.2	-652.3	-240.0	-102.9	0.00	0.00	0.00
4,100.0	16.44	200.20	4,003.1	-678.8	-249.8	-107.1	0.00	0.00	0.00
4,200.0	16.44	200.20	4,099.0	-705.4	-259.6	-111.3	0.00	0.00	0.00
4,284.4	16.44	200.20	4,180.0	-727.8	-267.8	-114.8	0.00	0.00	0.00
Terry/Sussex									
4,300.0	16.44	200.20	4,194.9	-732.0	-269.4	-115.5	0.00	0.00	0.00
4,305.3	16.44	200.20	4,200.0	-733.4	-269.9	-115.7	0.00	0.00	0.00

Bill Barrett Corp

Planning Report

Database:	Compass	Local Co-ordinate Reference:	Well Pappenheim 6-62-26-8H
Company:	BILL BARRETT CORP	TVD Reference:	KB @ 4750.0ft (Original Well Elev)
Project:	WELD COUNTY, COLORADO	MD Reference:	KB @ 4750.0ft (Original Well Elev)
Site:	Pappenheim 6-62-26-8H	North Reference:	True
Well:	Pappenheim 6-62-26-8H	Survey Calculation Method:	Minimum Curvature
Wellbore:	Wellbore #1		
Design:	Design #1		

Planned Survey									
Measured Depth (ft)	Inclination (°)	Azimuth (°)	Vertical Depth (ft)	+N/-S (ft)	+E/-W (ft)	Vertical Section (ft)	Dogleg Rate (°/100ft)	Build Rate (°/100ft)	Turn Rate (°/100ft)
Start Drop -1.50									
4,400.0	15.02	200.20	4,291.1	-757.5	-278.7	-119.5	1.50	-1.50	0.00
4,500.0	13.52	200.20	4,388.1	-780.6	-287.3	-123.1	1.50	-1.50	0.00
4,600.0	12.02	200.20	4,485.6	-801.3	-294.9	-126.4	1.50	-1.50	0.00
4,700.0	10.52	200.20	4,583.6	-819.7	-301.6	-129.3	1.50	-1.50	0.00
4,800.0	9.02	200.20	4,682.2	-835.6	-307.5	-131.8	1.50	-1.50	0.00
4,900.0	7.52	200.20	4,781.1	-849.1	-312.5	-133.9	1.50	-1.50	0.00
4,902.2	7.49	200.20	4,783.3	-849.4	-312.6	-134.0	1.50	-1.50	0.00
Shannon									
5,000.0	6.02	200.20	4,880.4	-860.2	-316.5	-135.7	1.50	-1.50	0.00
5,100.0	4.52	200.20	4,980.0	-868.8	-319.7	-137.0	1.50	-1.50	0.00
5,200.0	3.02	200.20	5,079.8	-875.0	-322.0	-138.0	1.50	-1.50	0.00
5,300.0	1.52	200.20	5,179.7	-878.7	-323.4	-138.6	1.50	-1.50	0.00
5,400.0	0.02	200.20	5,279.7	-879.9	-323.8	-138.8	1.50	-1.50	0.00
5,401.4	0.00	0.00	5,281.1	-879.9	-323.8	-138.8	1.50	-1.50	0.00
Start 500.0 hold at 5401.4 MD									
5,500.0	0.00	0.00	5,379.7	-879.9	-323.8	-138.8	0.00	0.00	0.00
5,600.0	0.00	0.00	5,479.7	-879.9	-323.8	-138.8	0.00	0.00	0.00
5,700.0	0.00	0.00	5,579.7	-879.9	-323.8	-138.8	0.00	0.00	0.00
5,800.0	0.00	0.00	5,679.7	-879.9	-323.8	-138.8	0.00	0.00	0.00
5,900.0	0.00	0.00	5,779.7	-879.9	-323.8	-138.8	0.00	0.00	0.00
5,901.4	0.00	0.00	5,781.1	-879.9	-323.8	-138.8	0.00	0.00	0.00
Start Build 10.00									
6,000.0	9.86	89.45	5,879.2	-879.9	-315.4	-130.5	10.00	10.00	0.00
6,100.0	19.86	89.45	5,975.8	-879.6	-289.7	-105.5	10.00	10.00	0.00
6,200.0	29.86	89.45	6,066.4	-879.2	-247.8	-64.5	10.00	10.00	0.00
6,292.4	39.10	89.45	6,142.5	-878.7	-195.5	-13.4	10.00	10.00	0.00
Sharon Springs									
6,300.0	39.86	89.45	6,148.3	-878.7	-190.7	-8.7	10.00	10.00	0.00
6,400.0	49.86	89.45	6,219.1	-878.0	-120.2	60.2	10.00	10.00	0.00
6,425.0	52.36	89.45	6,234.8	-877.8	-100.8	79.1	10.00	10.00	0.00
Niobrara									
6,500.0	59.86	89.45	6,276.6	-877.2	-38.6	140.0	10.00	10.00	0.00
6,600.0	69.86	89.45	6,319.0	-876.3	51.9	228.3	10.00	10.00	0.00
6,623.1	72.17	89.45	6,326.5	-876.1	73.7	249.7	10.00	10.00	0.00
Top "B2" Target									
6,700.0	79.86	89.45	6,345.1	-875.4	148.3	322.6	10.00	10.00	0.00
6,760.1	85.87	89.45	6,352.6	-874.8	207.9	380.8	10.00	10.00	0.00
Base "B2" Target									
6,800.0	89.86	89.45	6,354.1	-874.4	247.7	419.8	10.00	10.00	0.00
6,805.5	90.41	89.45	6,354.0	-874.4	253.2	425.1	9.95	9.95	0.00
Start 3795.3 hold at 6805.5 MD - 7" Csg									
6,900.0	90.41	89.45	6,353.4	-873.4	347.7	517.5	0.00	0.00	0.00
7,000.0	90.41	89.45	6,352.7	-872.5	447.7	615.2	0.00	0.00	0.00
7,100.0	90.41	89.45	6,351.9	-871.5	547.7	712.9	0.00	0.00	0.00
7,200.0	90.41	89.45	6,351.2	-870.5	647.7	810.7	0.00	0.00	0.00
7,300.0	90.41	89.45	6,350.5	-869.6	747.7	908.4	0.00	0.00	0.00
7,400.0	90.41	89.45	6,349.8	-868.6	847.7	1,006.1	0.00	0.00	0.00
7,500.0	90.41	89.45	6,349.1	-867.6	947.7	1,103.8	0.00	0.00	0.00
7,600.0	90.41	89.45	6,348.4	-866.7	1,047.7	1,201.5	0.00	0.00	0.00
7,700.0	90.41	89.45	6,347.7	-865.7	1,147.7	1,299.3	0.00	0.00	0.00
7,800.0	90.41	89.45	6,347.0	-864.7	1,247.6	1,397.0	0.00	0.00	0.00
7,900.0	90.41	89.45	6,346.2	-863.8	1,347.6	1,494.7	0.00	0.00	0.00

Bill Barrett Corp

Planning Report

Database:	Compass	Local Co-ordinate Reference:	Well Pappenheim 6-62-26-8H
Company:	BILL BARRETT CORP	TVD Reference:	KB @ 4750.0ft (Original Well Elev)
Project:	WELD COUNTY, COLORADO	MD Reference:	KB @ 4750.0ft (Original Well Elev)
Site:	Pappenheim 6-62-26-8H	North Reference:	True
Well:	Pappenheim 6-62-26-8H	Survey Calculation Method:	Minimum Curvature
Wellbore:	Wellbore #1		
Design:	Design #1		

Planned Survey										
Measured Depth (ft)	Inclination (°)	Azimuth (°)	Vertical Depth (ft)	+N/-S (ft)	+E/-W (ft)	Vertical Section (ft)	Dogleg Rate (°/100ft)	Build Rate (°/100ft)	Turn Rate (°/100ft)	
8,000.0	90.41	89.45	6,345.5	-862.8	1,447.6	1,592.4	0.00	0.00	0.00	
8,100.0	90.41	89.45	6,344.8	-861.8	1,547.6	1,690.2	0.00	0.00	0.00	
8,200.0	90.41	89.45	6,344.1	-860.9	1,647.6	1,787.9	0.00	0.00	0.00	
8,300.0	90.41	89.45	6,343.4	-859.9	1,747.6	1,885.6	0.00	0.00	0.00	
8,400.0	90.41	89.45	6,342.7	-858.9	1,847.6	1,983.3	0.00	0.00	0.00	
8,500.0	90.41	89.45	6,342.0	-858.0	1,947.6	2,081.0	0.00	0.00	0.00	
8,600.0	90.41	89.45	6,341.3	-857.0	2,047.6	2,178.8	0.00	0.00	0.00	
8,700.0	90.41	89.45	6,340.5	-856.0	2,147.6	2,276.5	0.00	0.00	0.00	
8,800.0	90.41	89.45	6,339.8	-855.1	2,247.6	2,374.2	0.00	0.00	0.00	
8,900.0	90.41	89.45	6,339.1	-854.1	2,347.6	2,471.9	0.00	0.00	0.00	
9,000.0	90.41	89.45	6,338.4	-853.1	2,447.6	2,569.7	0.00	0.00	0.00	
9,100.0	90.41	89.45	6,337.7	-852.2	2,547.6	2,667.4	0.00	0.00	0.00	
9,200.0	90.41	89.45	6,337.0	-851.2	2,647.5	2,765.1	0.00	0.00	0.00	
9,300.0	90.41	89.45	6,336.3	-850.2	2,747.5	2,862.8	0.00	0.00	0.00	
9,400.0	90.41	89.45	6,335.6	-849.3	2,847.5	2,960.6	0.00	0.00	0.00	
9,500.0	90.41	89.45	6,334.8	-848.3	2,947.5	3,058.3	0.00	0.00	0.00	
9,600.0	90.41	89.45	6,334.1	-847.3	3,047.5	3,156.0	0.00	0.00	0.00	
9,700.0	90.41	89.45	6,333.4	-846.4	3,147.5	3,253.7	0.00	0.00	0.00	
9,800.0	90.41	89.45	6,332.7	-845.4	3,247.5	3,351.4	0.00	0.00	0.00	
9,900.0	90.41	89.45	6,332.0	-844.4	3,347.5	3,449.2	0.00	0.00	0.00	
10,000.0	90.41	89.45	6,331.3	-843.5	3,447.5	3,546.9	0.00	0.00	0.00	
10,100.0	90.41	89.45	6,330.6	-842.5	3,547.5	3,644.6	0.00	0.00	0.00	
10,200.0	90.41	89.45	6,329.9	-841.5	3,647.5	3,742.3	0.00	0.00	0.00	
10,300.0	90.41	89.45	6,329.1	-840.6	3,747.5	3,840.1	0.00	0.00	0.00	
10,400.0	90.41	89.45	6,328.4	-839.6	3,847.5	3,937.8	0.00	0.00	0.00	
10,500.0	90.41	89.45	6,327.7	-838.6	3,947.5	4,035.5	0.00	0.00	0.00	
10,600.0	90.41	89.45	6,327.0	-837.7	4,047.4	4,133.2	0.00	0.00	0.00	
10,600.8	90.41	89.45	6,327.0	-837.7	4,048.3	4,134.0	0.00	0.00	0.00	
TD at 10600.8										

Targets										
Target Name										
- hit/miss target	Dip Angle (°)	Dip Dir. (°)	TVD (ft)	+N/-S (ft)	+E/-W (ft)	Northing (ft)	Easting (ft)	Latitude	Longitude	
Pappenheim 6-62-26-8H	0.00	0.00	6,327.0	-837.6	4,048.5	1,414,221.59	3,338,652.36	40° 27' 50.616 N	104° 16' 58.332 W	
- plan misses by 0.3ft at 10600.8ft MD (6327.0 TVD, -837.7 N, 4048.3 E)										
- Point										
Pappenheim 6-62-26-8H	0.00	0.00	6,354.0	-874.3	253.2	1,414,133.36	3,334,857.91	40° 27' 50.256 N	104° 17' 47.436 W	
- plan misses by 0.1ft at 6805.5ft MD (6354.0 TVD, -874.4 N, 253.2 E)										
- Point										

Bill Barrett Corp

Planning Report

Database:	Compass	Local Co-ordinate Reference:	Well Pappenheim 6-62-26-8H
Company:	BILL BARRETT CORP	TVD Reference:	KB @ 4750.0ft (Original Well Elev)
Project:	WELD COUNTY, COLORADO	MD Reference:	KB @ 4750.0ft (Original Well Elev)
Site:	Pappenheim 6-62-26-8H	North Reference:	True
Well:	Pappenheim 6-62-26-8H	Survey Calculation Method:	Minimum Curvature
Wellbore:	Wellbore #1		
Design:	Design #1		

Formations						
Measured Depth (ft)	Vertical Depth (ft)	Name	Lithology	Dip (°)	Dip Direction (°)	
866.0	866.0	Pierre (Fox Hills Base)		-0.41	89.45	
3,499.8	3,426.0	Parkman		-0.41	89.45	
4,284.4	4,178.0	Terry/Sussex		-0.41	89.45	
4,902.2	4,781.0	Shannon		-0.41	89.45	
6,292.4	6,141.0	Sharon Springs		-0.41	89.45	
6,425.0	6,234.0	Niobrara		-0.41	89.45	
6,623.1	6,327.0	Top "B2" Target		-0.41	89.45	
6,760.1	6,354.0	Base "B2" Target		-0.41	89.45	

Plan Annotations					
Measured Depth (ft)	Vertical Depth (ft)	Local Coordinates			
		+N/-S (ft)	+E/-W (ft)	Comment	
1,000.0	1,000.0	0.0	0.0	Start Build 1.50	
2,096.0	2,081.1	-146.6	-53.9	Start 2209.3 hold at 2096.0 MD	
4,305.3	4,200.0	-733.4	-269.9	Start Drop -1.50	
5,401.4	5,281.1	-879.9	-323.8	Start 500.0 hold at 5401.4 MD	
5,901.4	5,781.1	-879.9	-323.8	Start Build 10.00	
6,805.5	6,354.0	-874.4	253.2	Start 3795.3 hold at 6805.5 MD	
10,600.8	6,327.0	-837.7	4,048.3	TD at 10600.8	