

Current Configuration						
Operator Delta Petroleum Corp				AFE #		
Field North Vega		PAD 4B		Location SWNNW 23-T9S-R93W		
Well name NVega 23-224		API # 05-077-09615				
County/State Mesa County, Colorado		Drawn by Ben Davis		Date 6/7/2011		Page 1

TUBULAR	Size	Weight	Grade	Thread	Depth
Surface	8.625"	24	J-55	LT&C	2246
Production	4.5"	11.6	N-80	LT&C	9132
Tubing	2.375"	4.7	N-80	EUE	8001.20

ITEM	DESCRIPTION	I.D.	O.D.	Length (ft)	Depth (ft)
00.	21' KB		0.000	21.00	21.00
01.	Tubing Hanger		4.500	0.80	21.80
02.	245 jts 2-3/8" 4.7# N-80 EUE Tubing	1.995	2.375	7944.83	7966.63
03.	XN-Nipple	1.875	2.375	1.30	7967.93
04.	1 jt 2-3/8" 4.7# N-80 EUE Tubing	1.995	2.375	32.47	8000.40
05.	Pump off Bit Sub TOP	1.995	2.375	0.80	8001.20
06.	¼" Capillary Injection String (Inside Tubing – EOT +10')		0.250	8011	8011

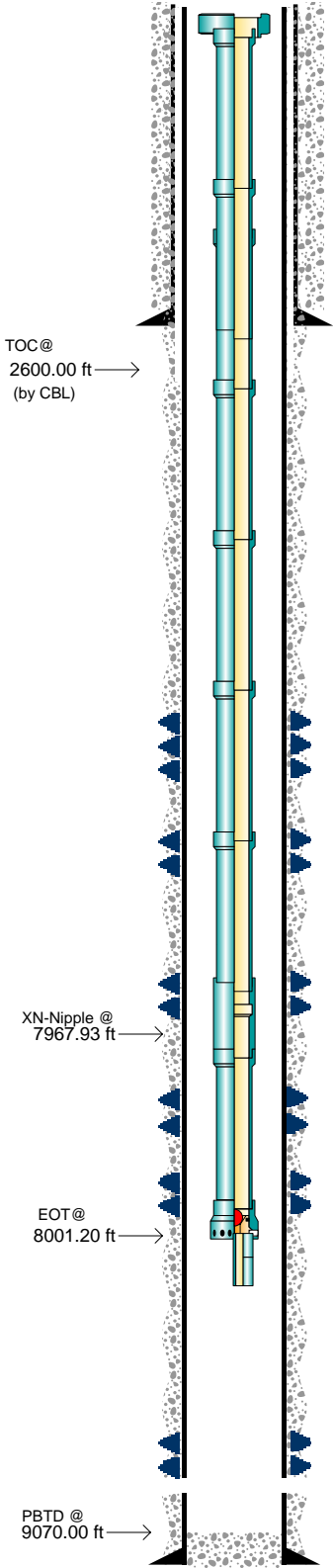
Perforation Summary:

All Perforations are 3SPF

Stage 1	Stage 5	Stage 9
8,7968,798	7,2527,252	6,5956,595
8,7308,732	7,2467,246	6,5826,582
8,6188,618	7,2307,230	6,5626,562
8,5998,599	7,2207,220	6,5546,554
8,5648,564	7,1967,196	6,5286,528
8,5578,557	7,1647,164	6,5126,512
Stage 2	7,1507,150	6,5046,504
7,9327,932	7,1287,128	Stage 10
7,8977,897	Stage 6	6,4786,478
7,8847,884	7,0977,097	6,4606,460
7,8507,850	7,0747,076	6,4306,430
7,8327,832	7,0547,056	6,4126,412
7,8207,820	7,0057,005	6,3926,392
7,8017,801	6,9706,970	6,3746,374
7,7867,786	6,9536,953	6,3646,364
Stage 3	Stage 7	6,3506,350
7,7247,724	6,8976,897	Stage 11
7,6777,677	6,8726,872	6,3226,324
7,6557,655	6,8486,848	6,2726,272
7,6307,630	6,8236,823	6,1806,180
7,5787,578	6,8006,800	6,1706,170
7,5727,572	6,7636,763	6,1546,154
7,5617,561	6,7546,754	6,1446,144
7,5247,524	6,7456,745	END
Stage 4	Stage 8	
7,4967,496	6,7226,722	
7,4457,445	6,7056,705	
7,4087,408	6,6886,688	
7,3937,393	6,6756,675	
7,3747,374	6,6456,645	
7,3407,340	6,6356,635	
7,3017,301	6,6206,620	
7,2937,293		

This document is confidential correspondence between our company and its customer. It may not be reproduced in any form, in whole or in part, by any means including any electronic format, nor its contents disclosed to anyone but our employees and employees of our customer.

powerDRAW.net



This document is confidential correspondence between our company and its customer. It may not be reproduced in any form, in whole or in part, by any means including any electronic format, nor its contents disclosed to anyone but our employees and employees of our customer.