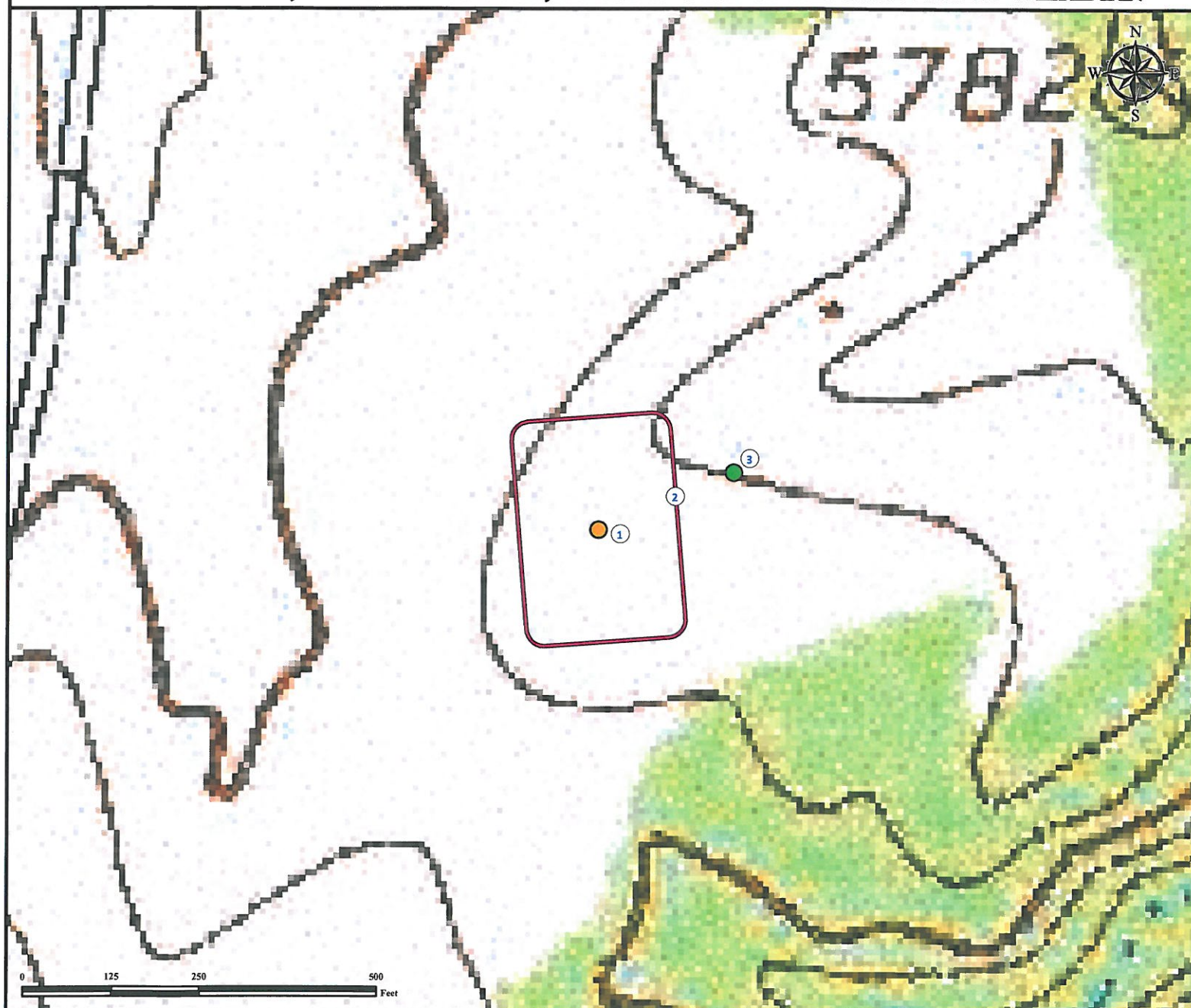


Reference Area Map

BASS 08-07

SE¼ NE¼ SECTION 7, TOWNSHIP 20 SOUTH, RANGE 69 WEST OF THE 6TH PRINCIPAL MERIDIAN



1. Proposed Well BASS 08-07.
2. Operational Disturbance Area.
3. Reference Photo Point.

Legend

- Proposed Well □ Disturbance Area ● Reference Photo Point

Reference Location

** All Measurements are Made from
● Reference Photo Point **

Lat: 38.3241114° Long: -105.146335° (NAD83)
Elevation: 5747 Feet

Surface Use: Rangeland



Use our resources to find yours!
www.petro-fs.com
(303) 928-7128

Field Date: 12/12/2012
Drafting Date: 01/16/2012
Drafter: GWB
Revision:

Data Sources:
- TOPO courtesy of USGS

Prepared for:

incremental
OIL AND GAS
LLC