



Providing Superior Value

# RADIAL CEMENT BOND GAMMA RAY CASING COLLAR LOG

Company Whiting Oil and Gas  
Well RAZOR 12-0141H  
Field RED TAIL  
County Weld State Colorado

Location: API # : 051233605200  
SEC 12 TWP 10N RGE 58W  
Permanent Datum Ground Level Elevation 4948  
Log Measured From Kelly Bushing  
Drilling Measured From Kelly Bushing  
Other Services  
NONE  
Elevation  
K.B. 4964  
D.F. 4963  
G.L. 4948

Date October 30, 2012

Run Number	ONE
Depth Driller	N/A
Depth Logger	4857
Bottom Logged Interval	4854
Top Log Interval	50'
Open Hole Size	9.625"
Type Fluid	Water
Density / Viscosity	N/A
Max. Recorded Temp.	N/A
Estimated Cement Top	SURFACE
Time Well Ready	9:15 AM
Time Logger on Bottom	10:45 AM
Equipment Number	HD 134
Location	Ft. Lupton
Recorded By	Patrick Grimes
Witnessed By	MIKE STAB

Borehole Record				Tubing Record			
Run Number	Bit	From	To	Size	Weight	From	To

Casing Record	Size	Wgt/Ft	Top	Bottom
Surface String				
Prot. String				
Production String	7"	26 lbs	Ground Level	
Liner				

<<< Fold Here >>>

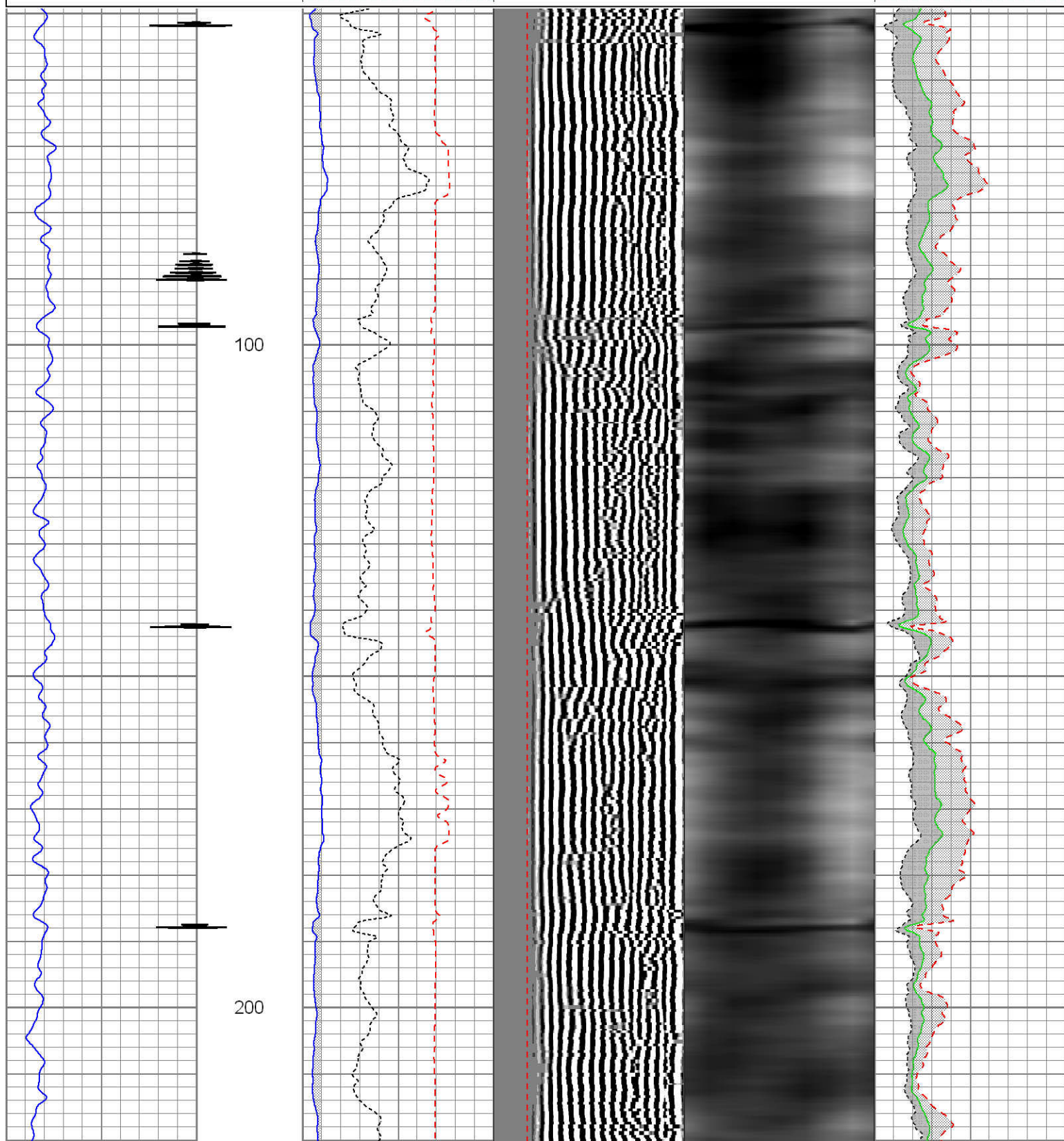
All interpretations are opinions based on inferences from electrical or other measurements and we cannot and do not guarantee the accuracy or correctness of any interpretation, and we shall not, except in the case of gross or willful negligence on our part, be liable or responsible for any loss, costs, damages, or expenses incurred or sustained by anyone resulting from any interpretation made by any of our officers, agents or employees. These interpretations are also subject to our general terms and conditions set out in our current Price Schedule.

## Comments

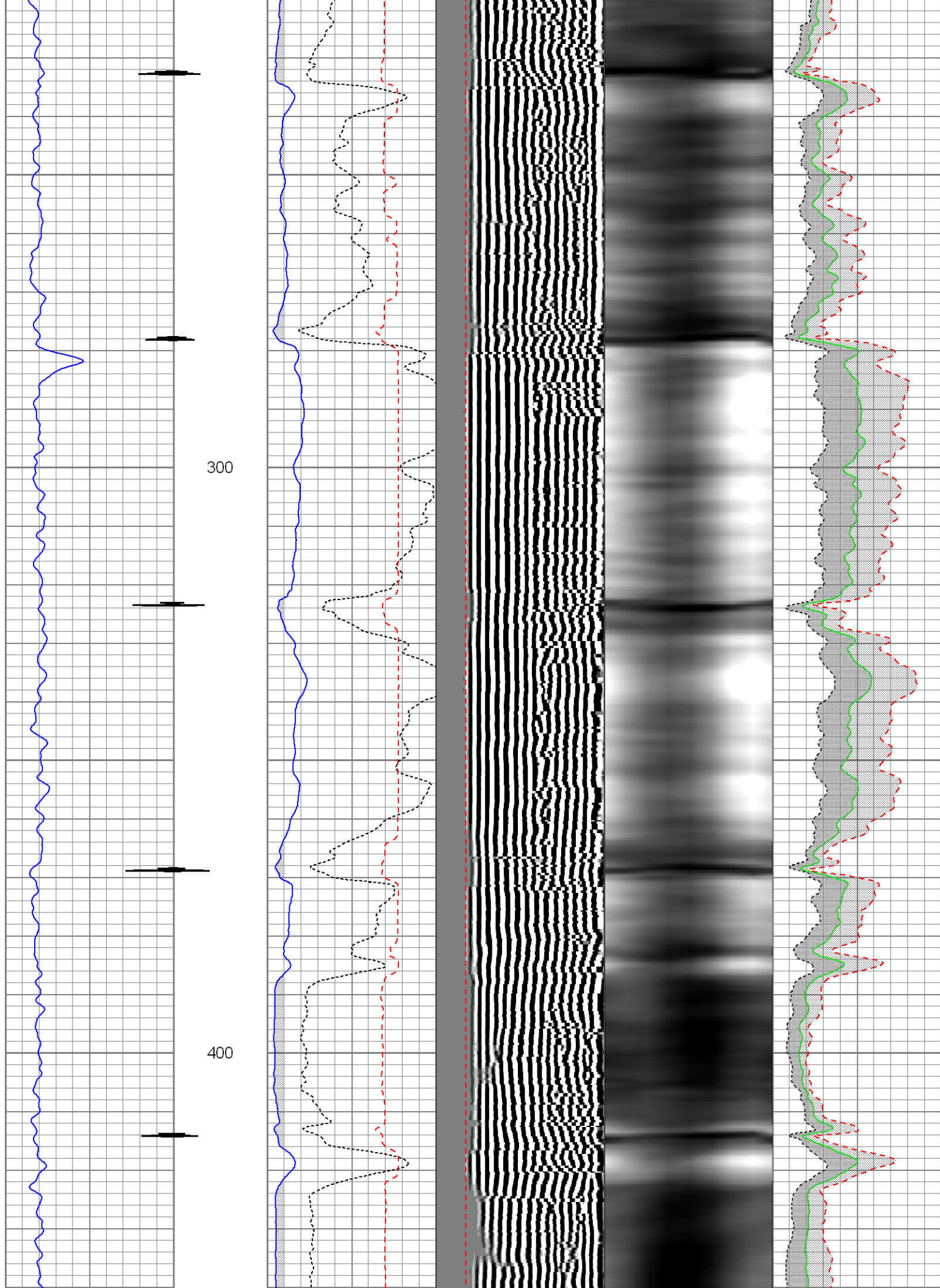
Log ran under 1500 psi surface induced pressure  
Thank you for choosing Pure Energy

Database File: whiting\_razor\_12-0141h.db  
Dataset Pathname: pass4  
Presentation Format: rib  
Dataset Creation: Tue Oct 30 10:52:14 2012 by Log SCH 111116  
Charted by: Depth in Feet scaled 1:240

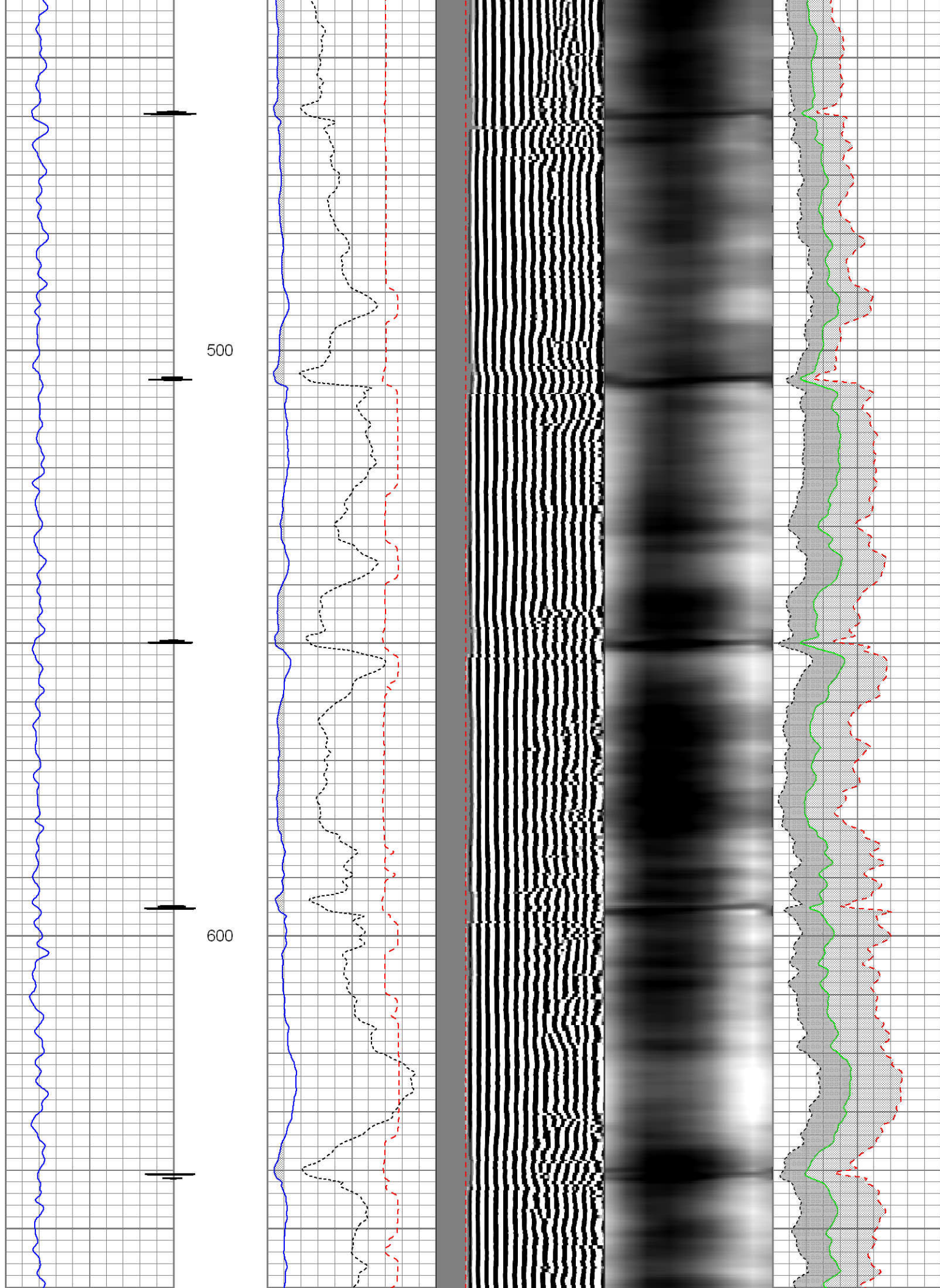
0	Gamma Ray 150	3' Amplitude	5' Variable Density Log	Sector Map	Average Amplitude
	Collar Locator	0 (mV) 100	200 1200	10 70	0 100
		3' Amplitude x 5	200 PPT (usec) 1200		Minimum Amplitude
		0 (mV) 20			0 100
		3' Travel Time			Maximum Amplitude
		650 (usec) 150			0 100



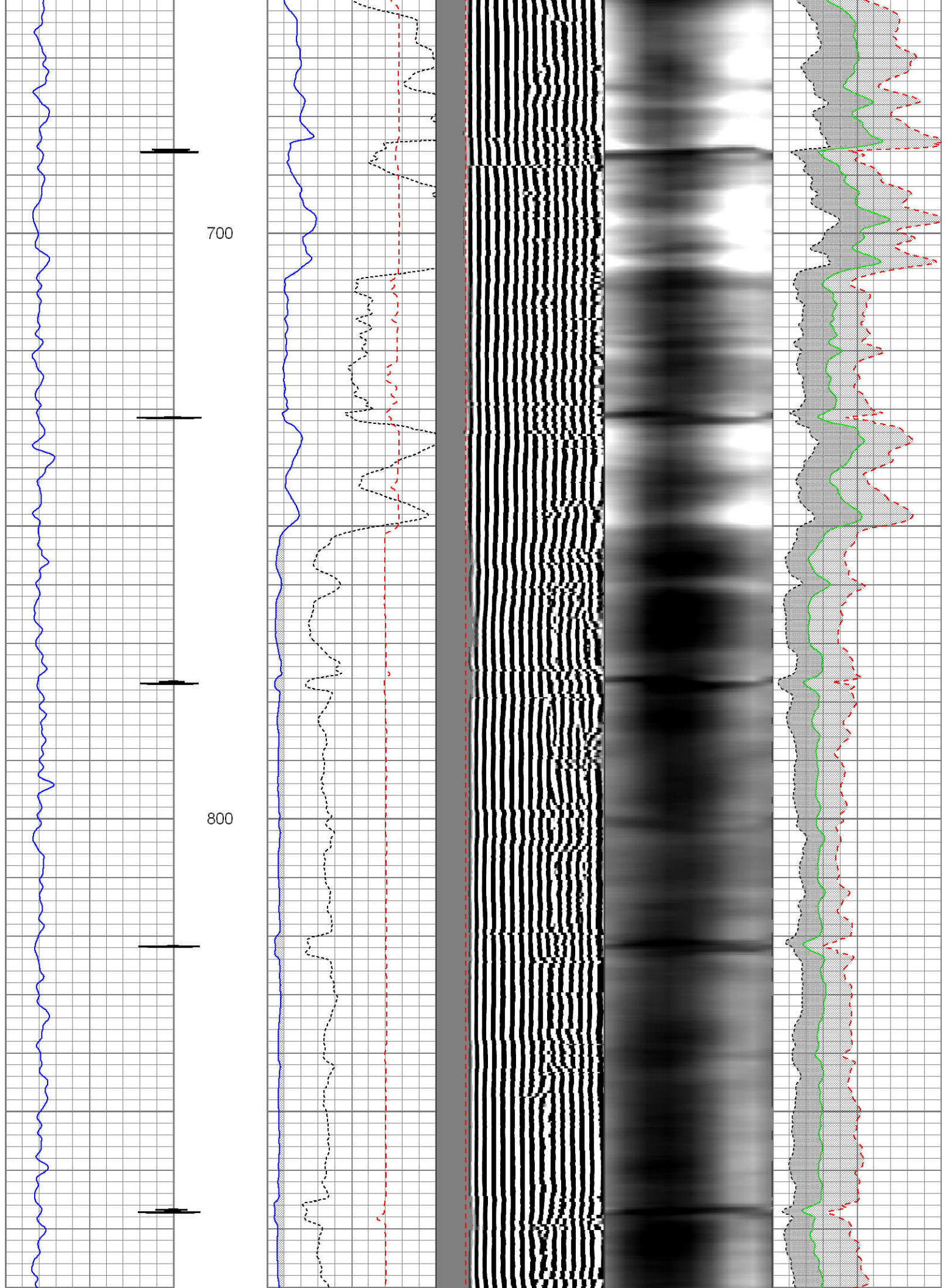




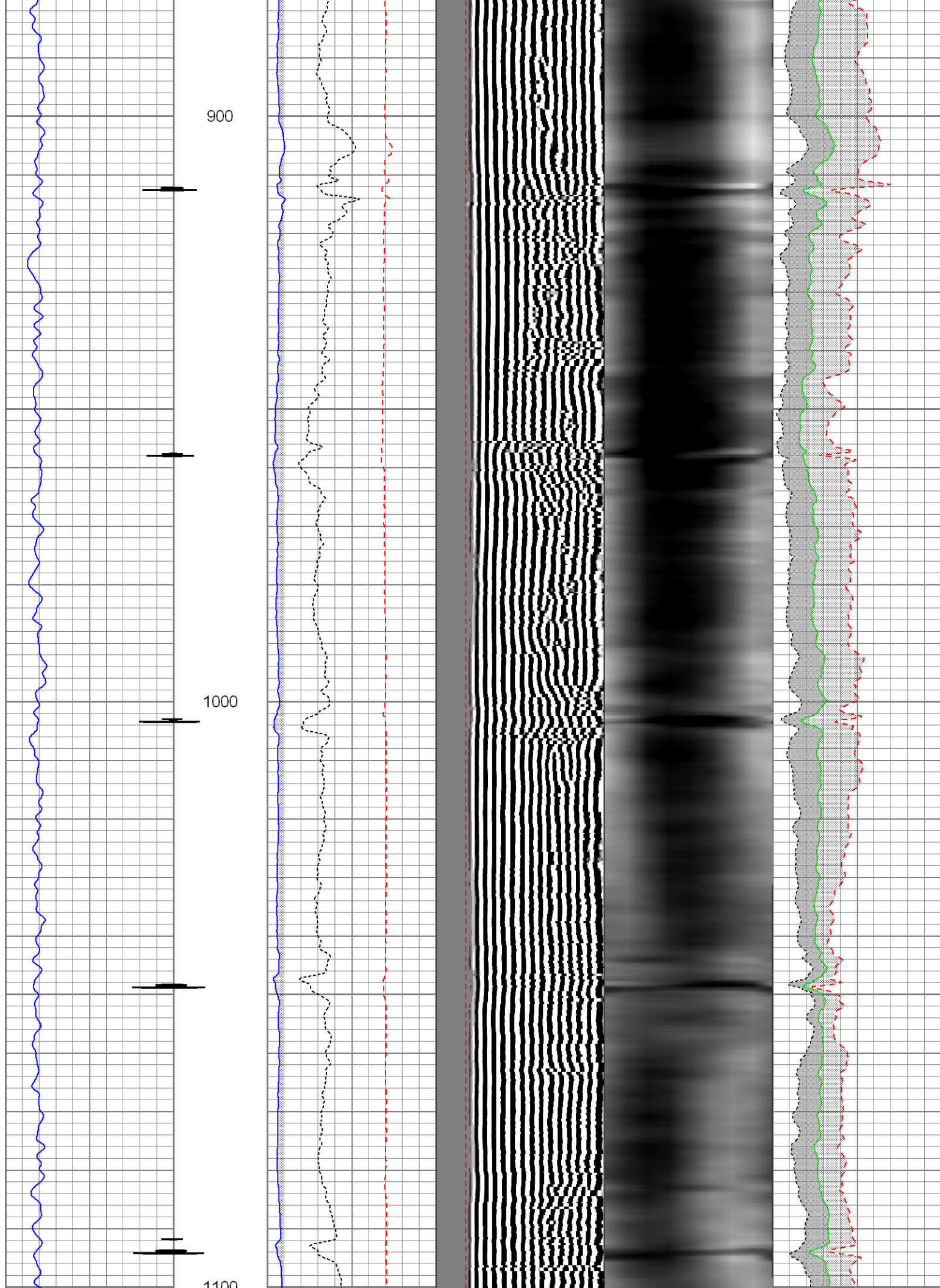




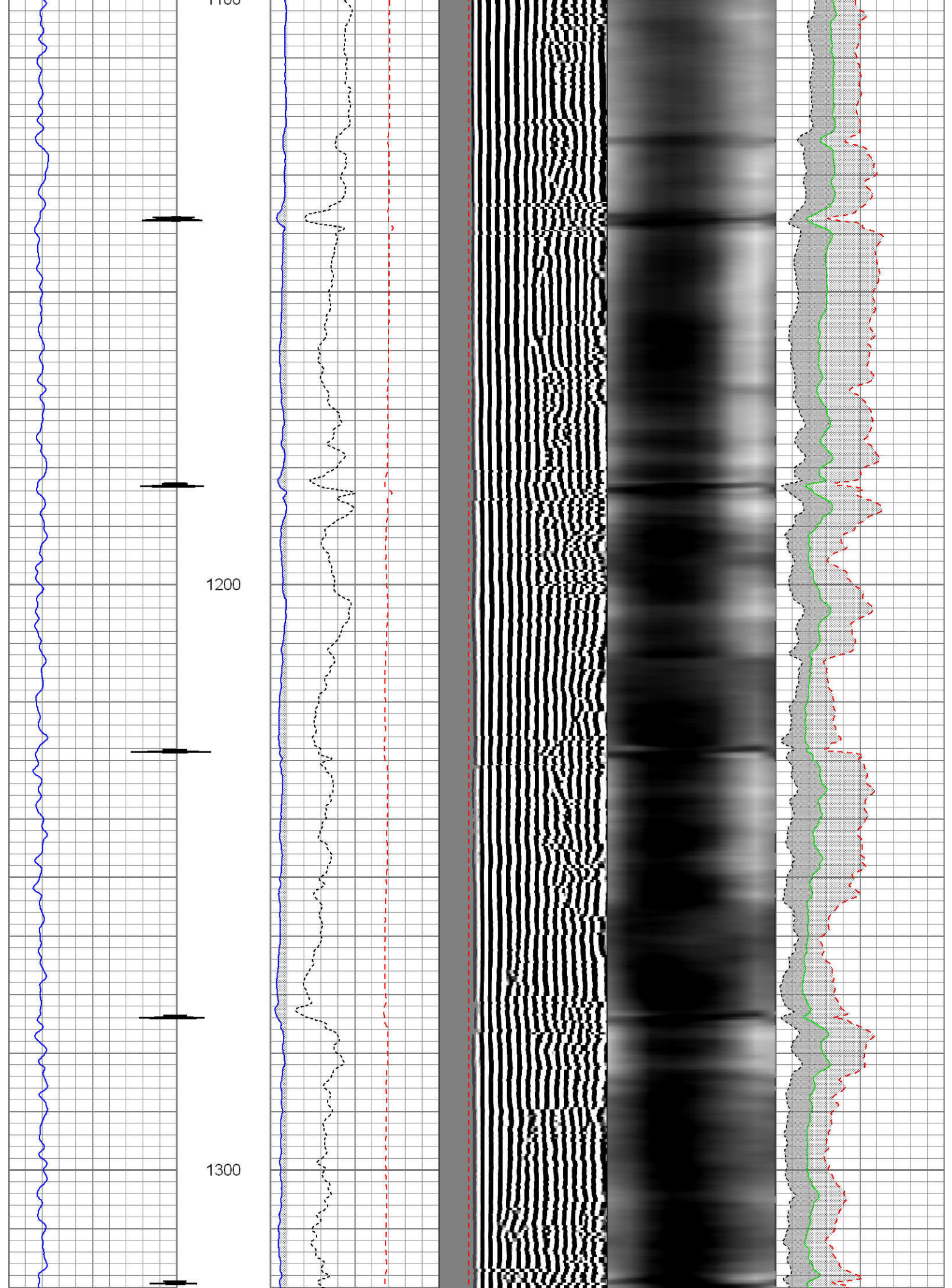




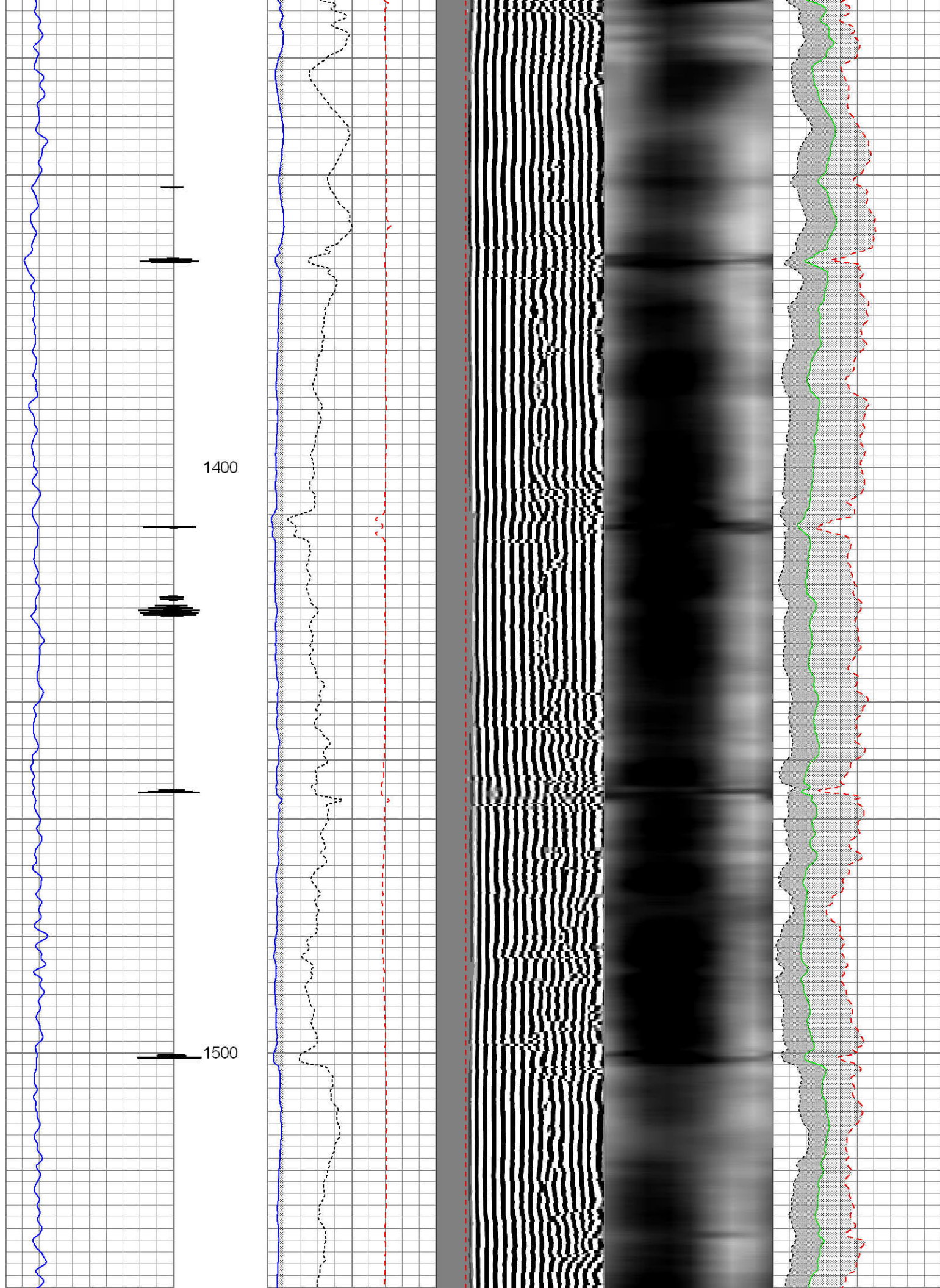




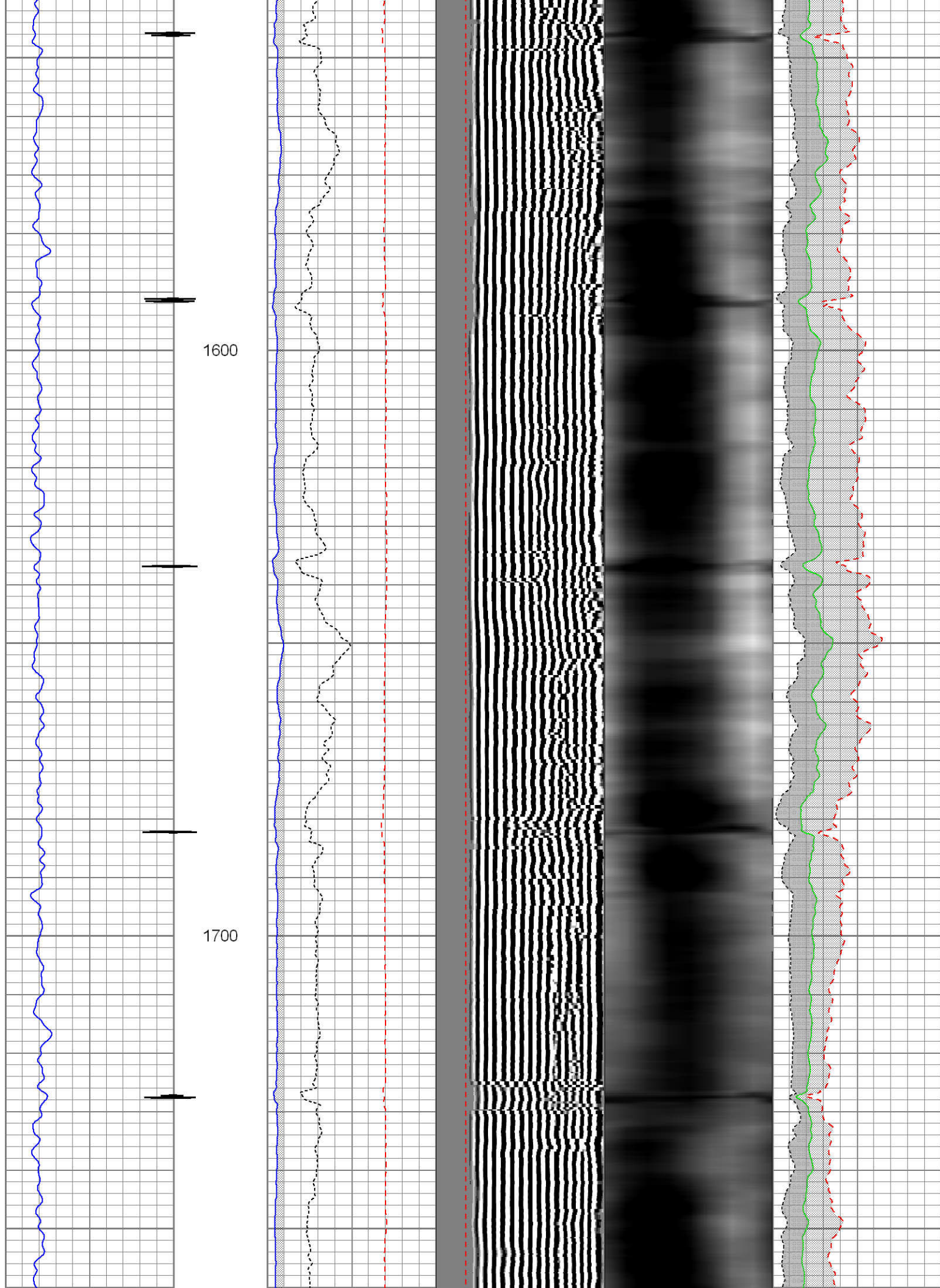




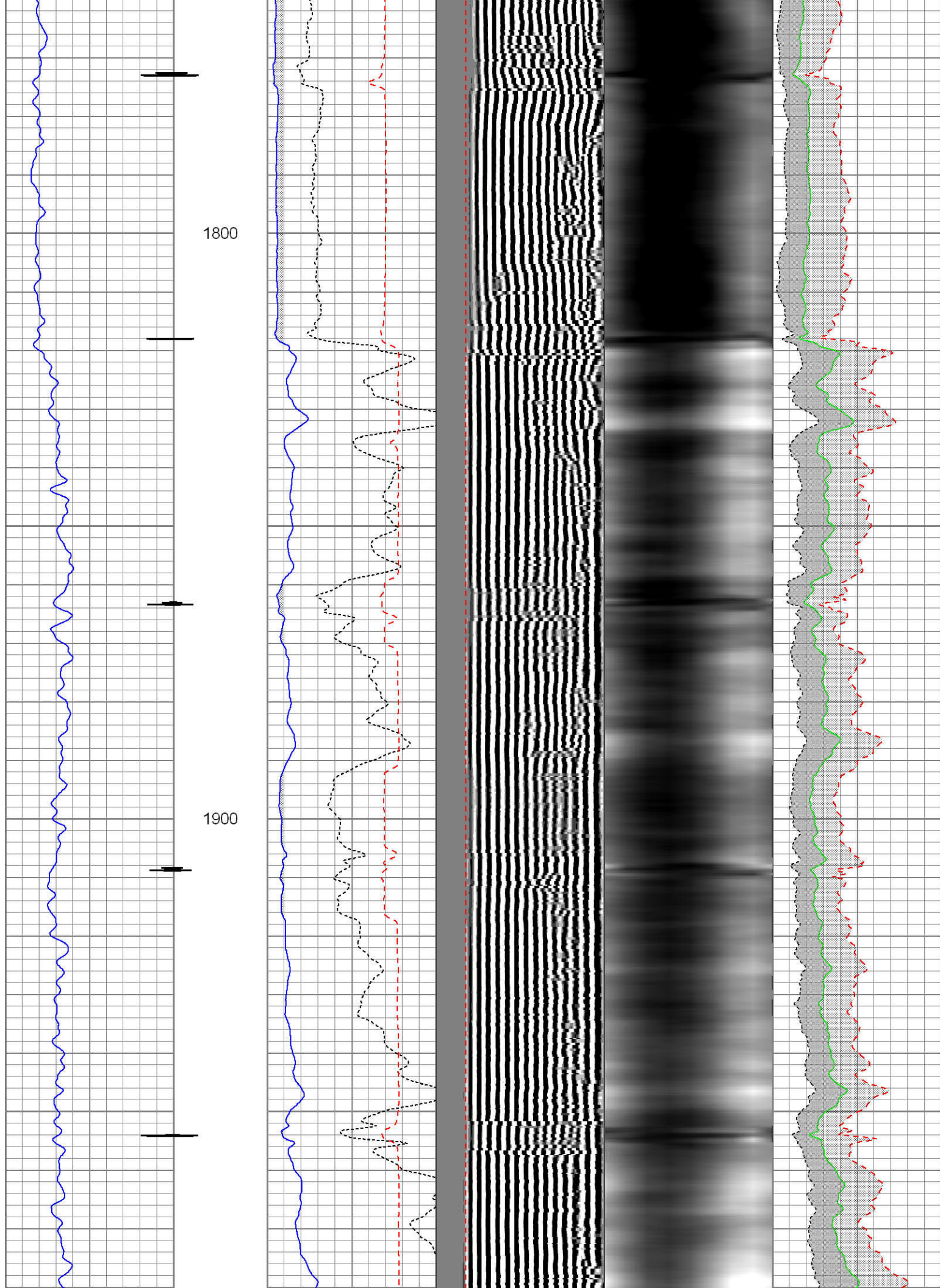




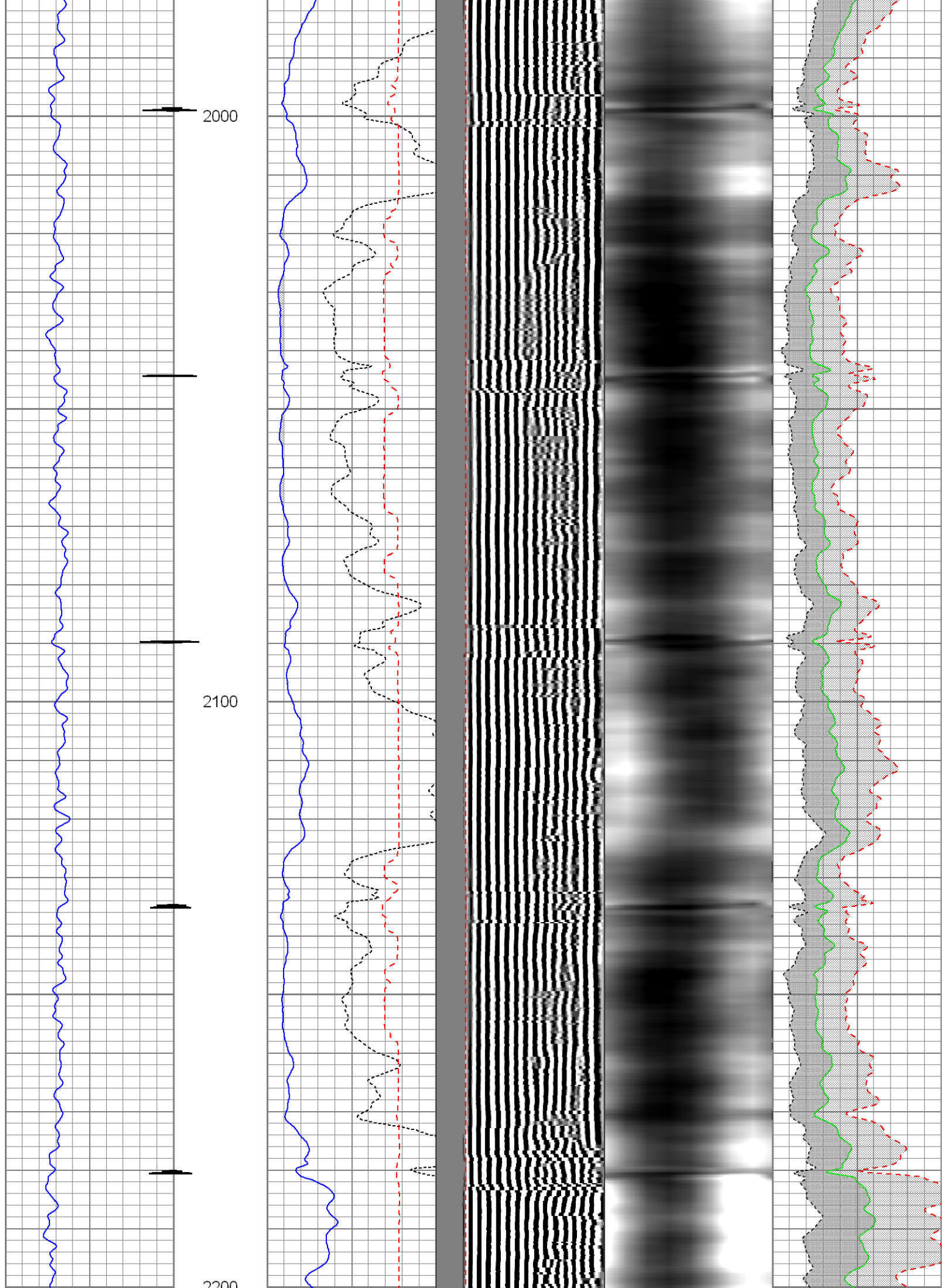










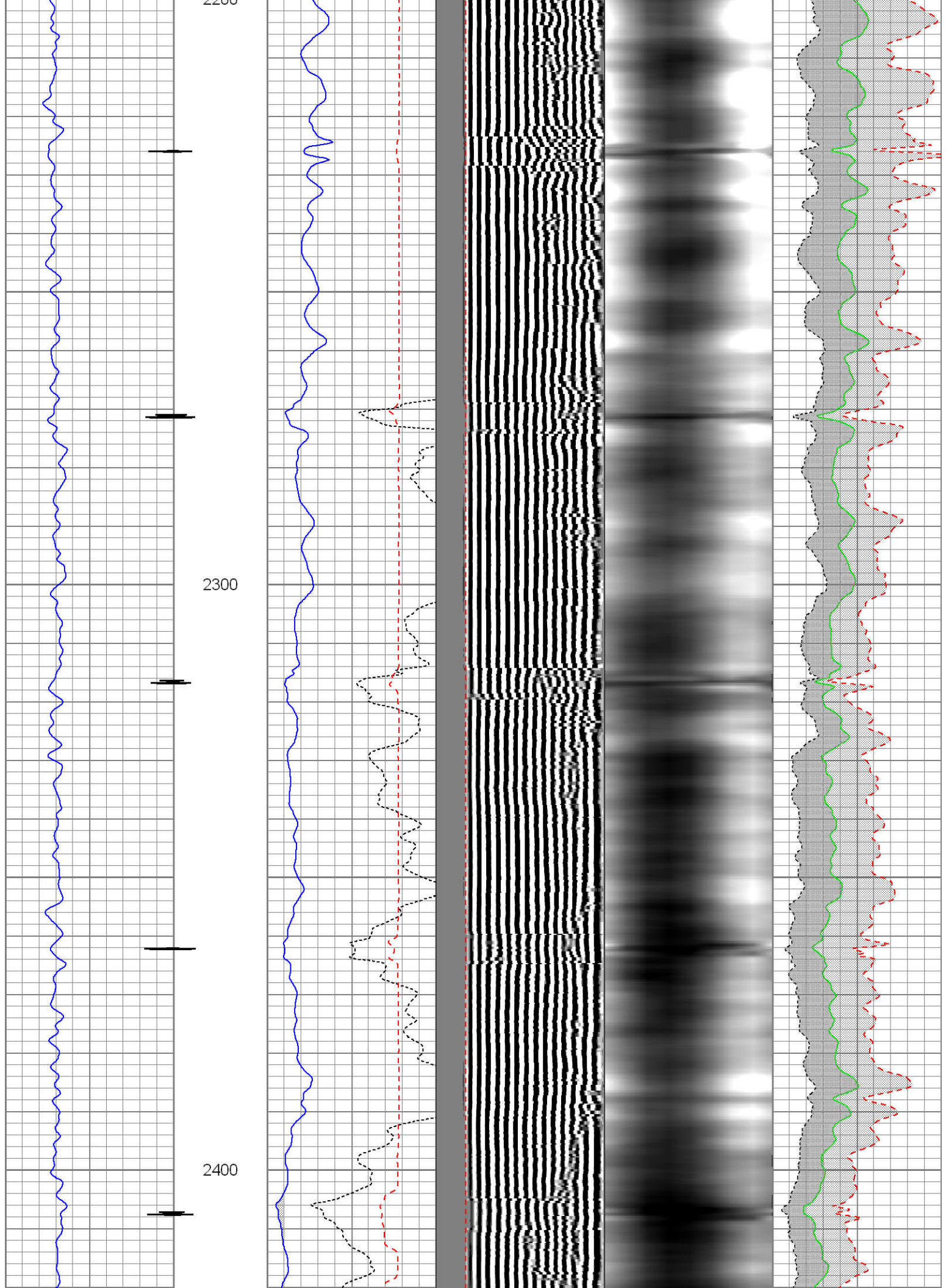




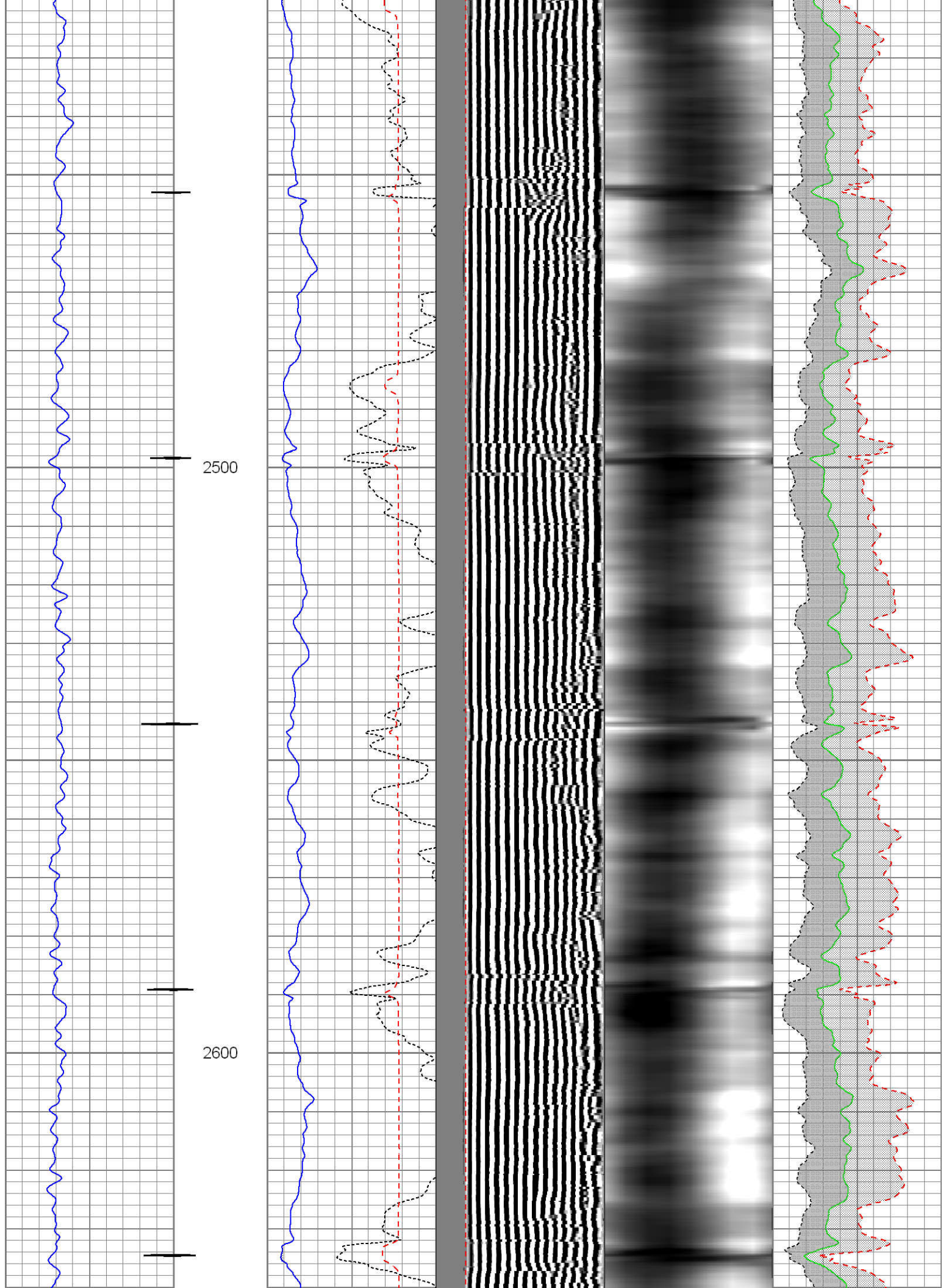
2200

2300

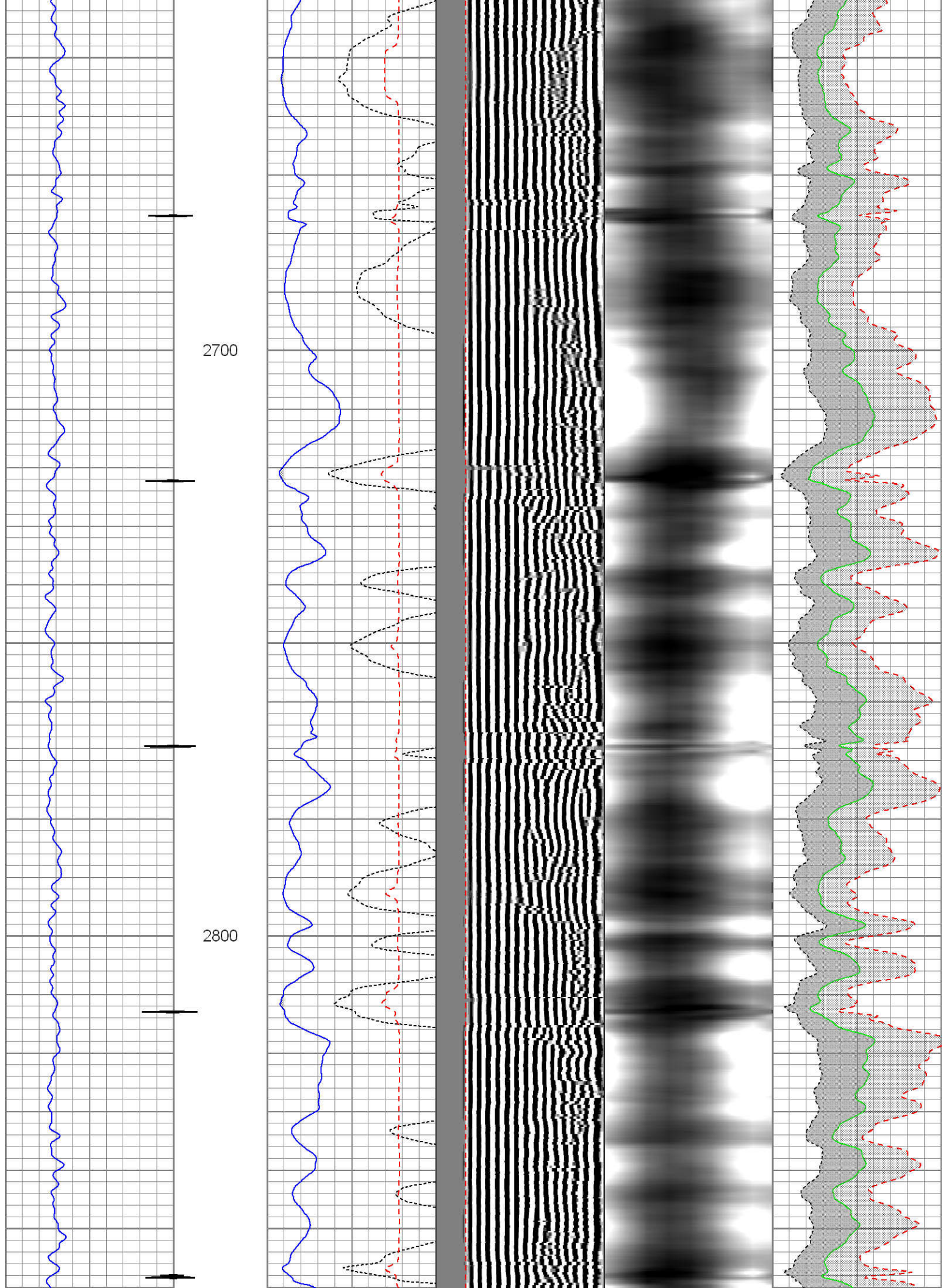
2400



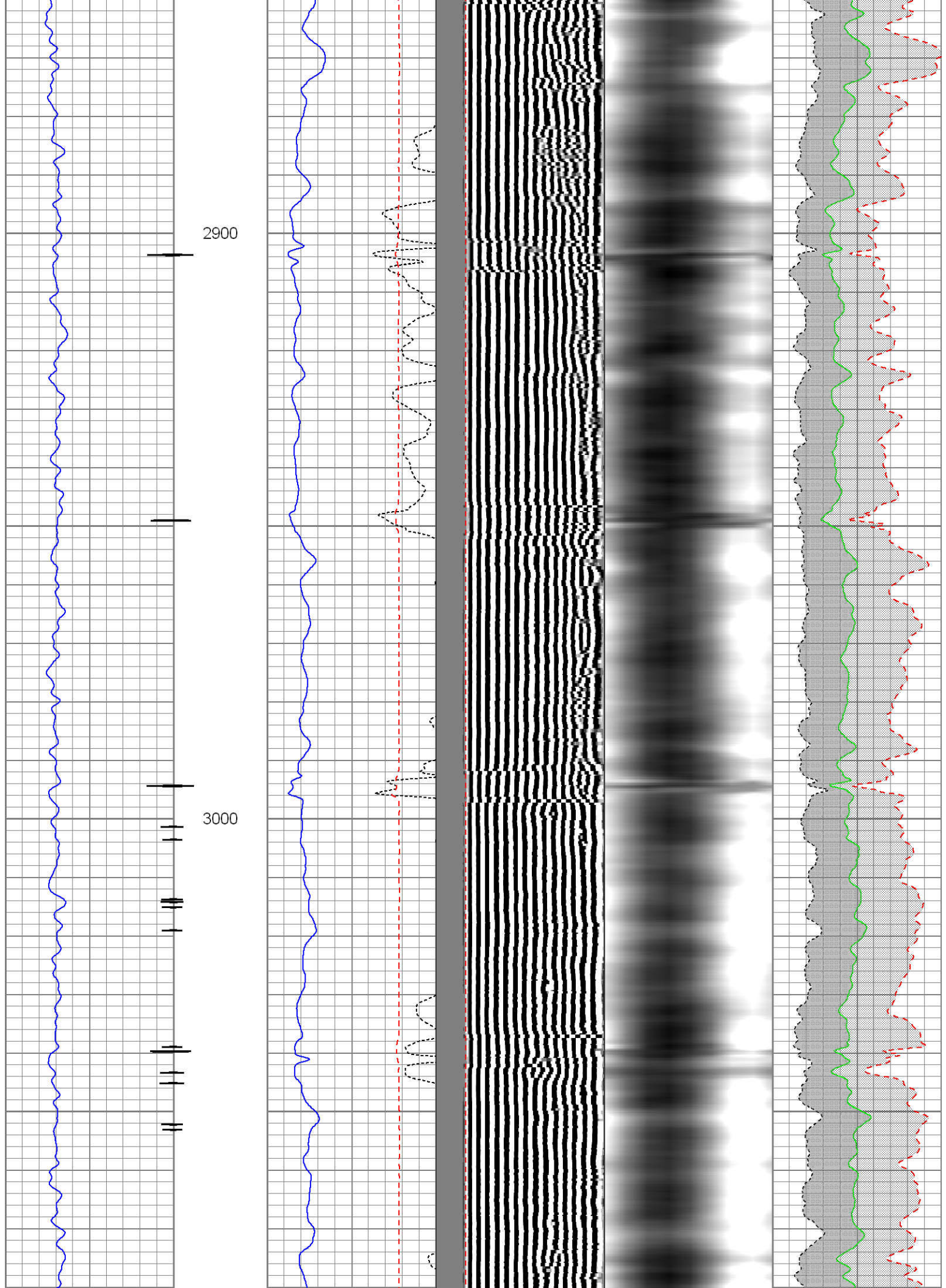




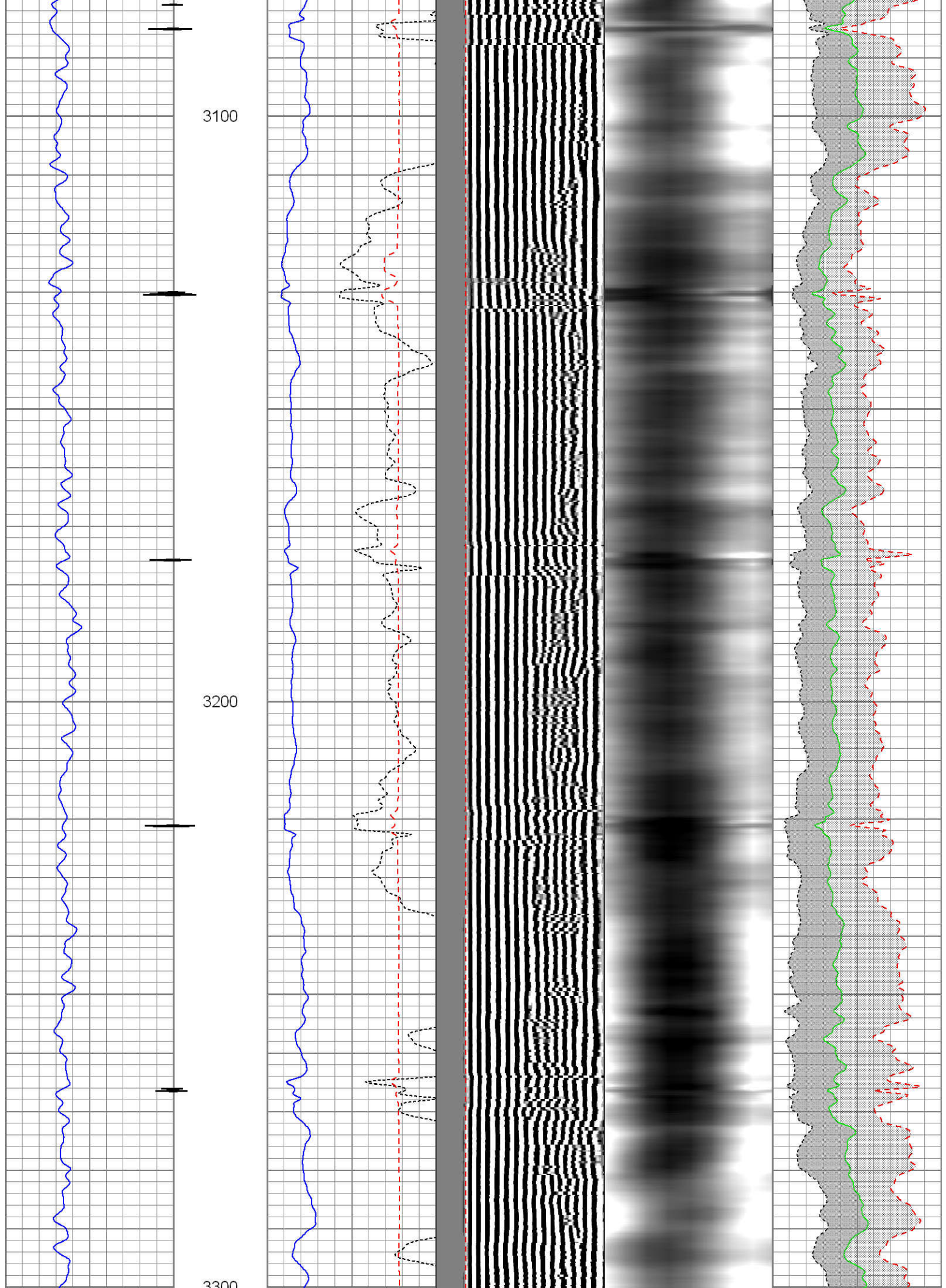




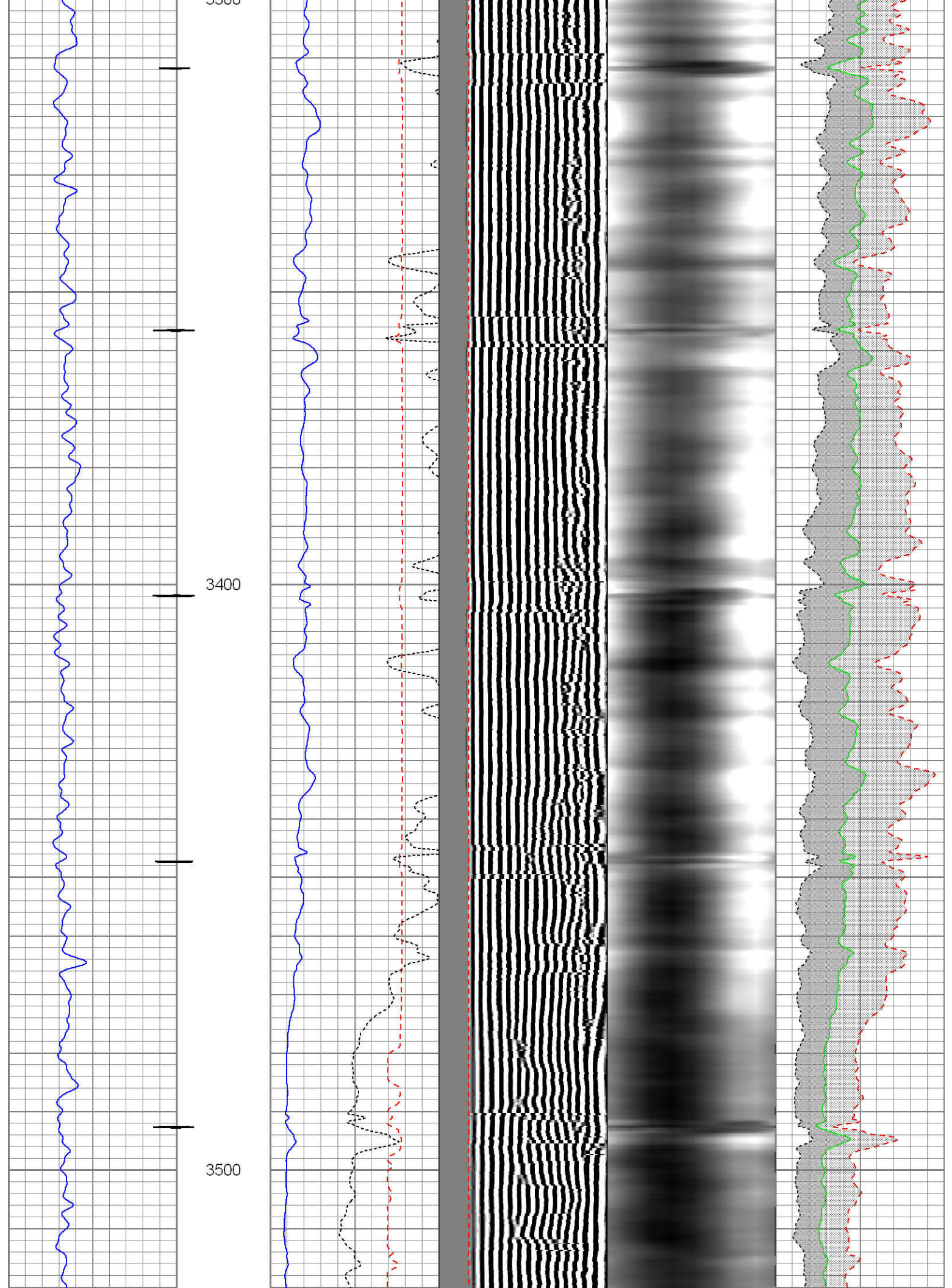




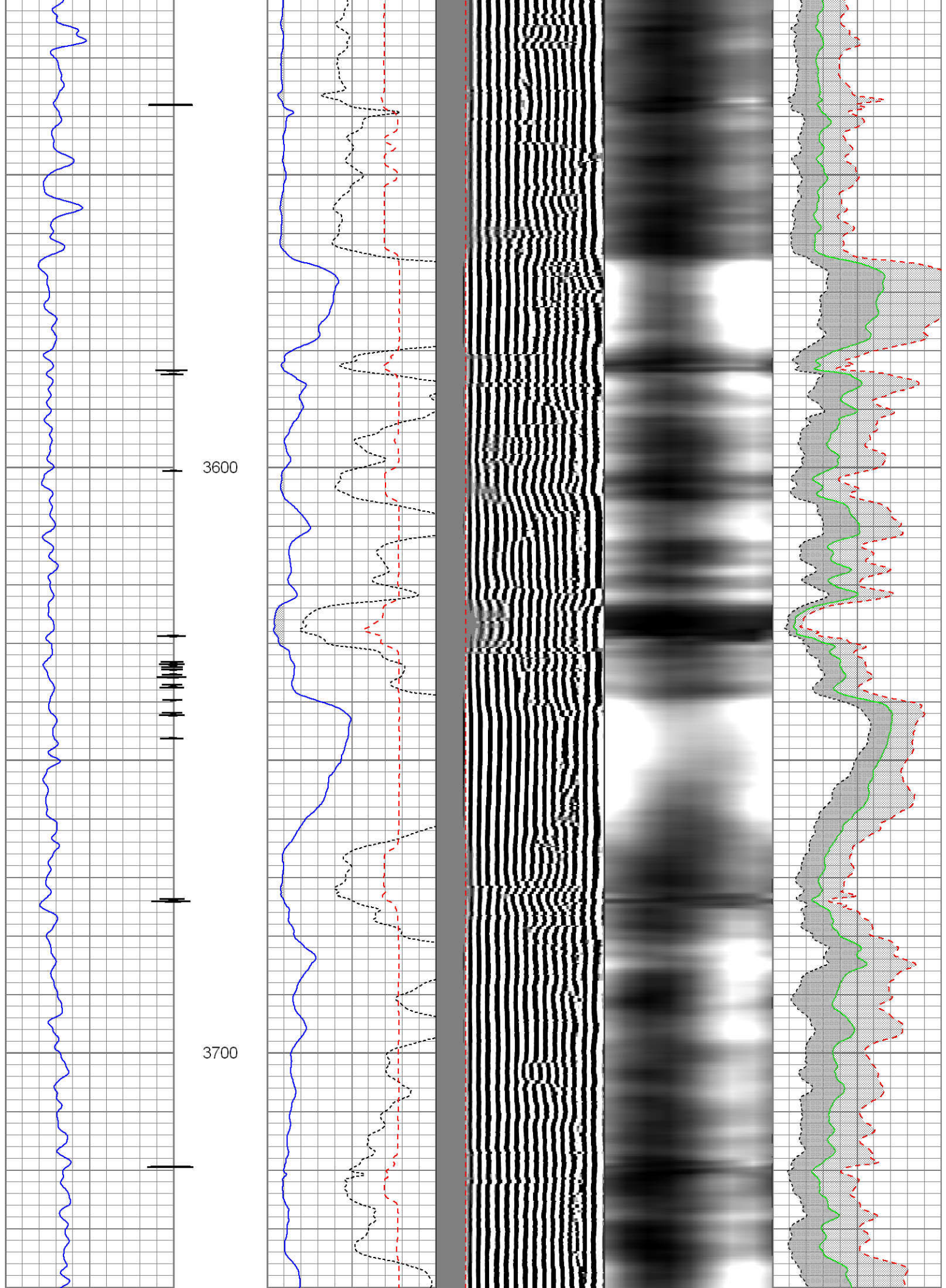




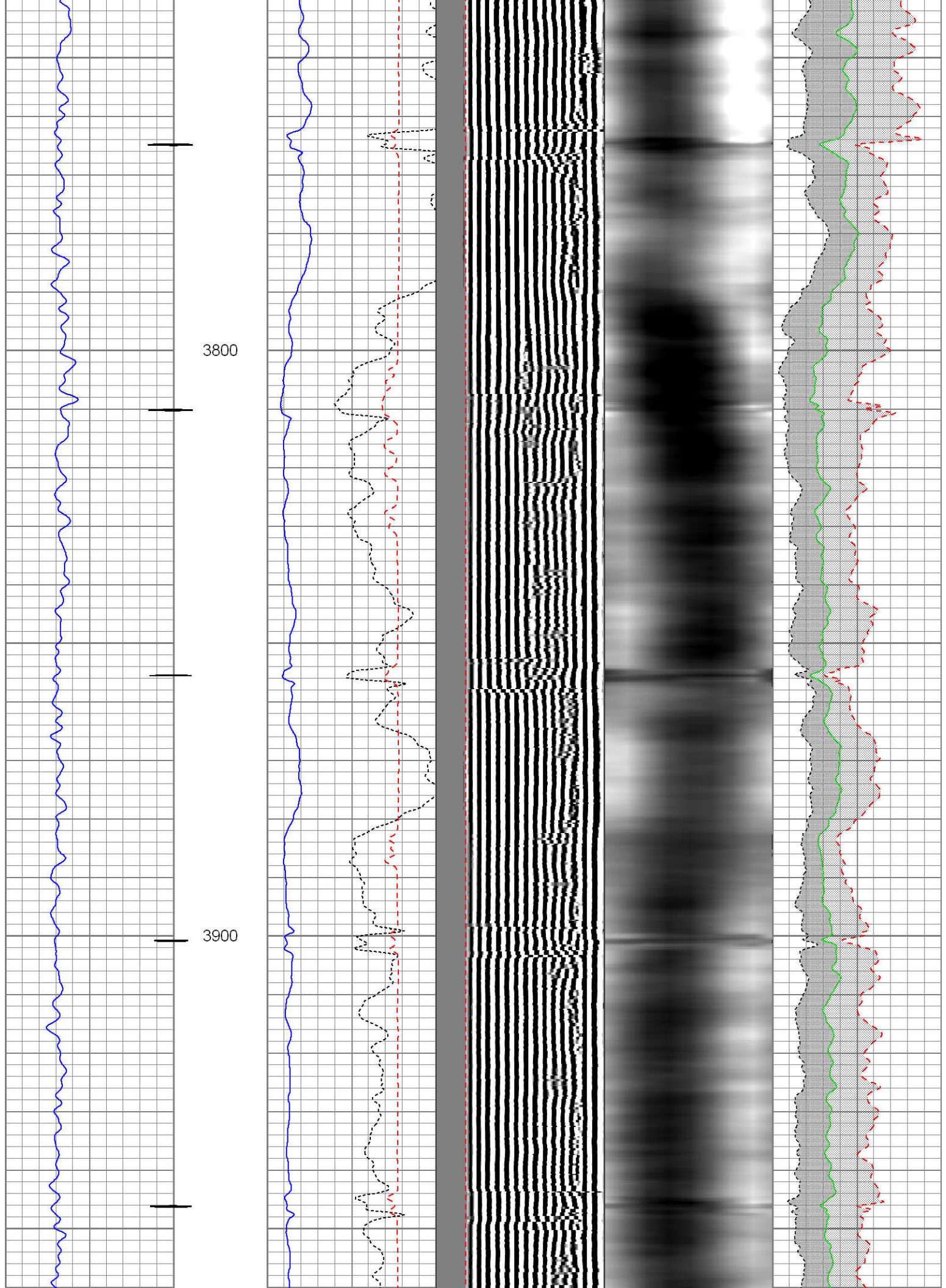




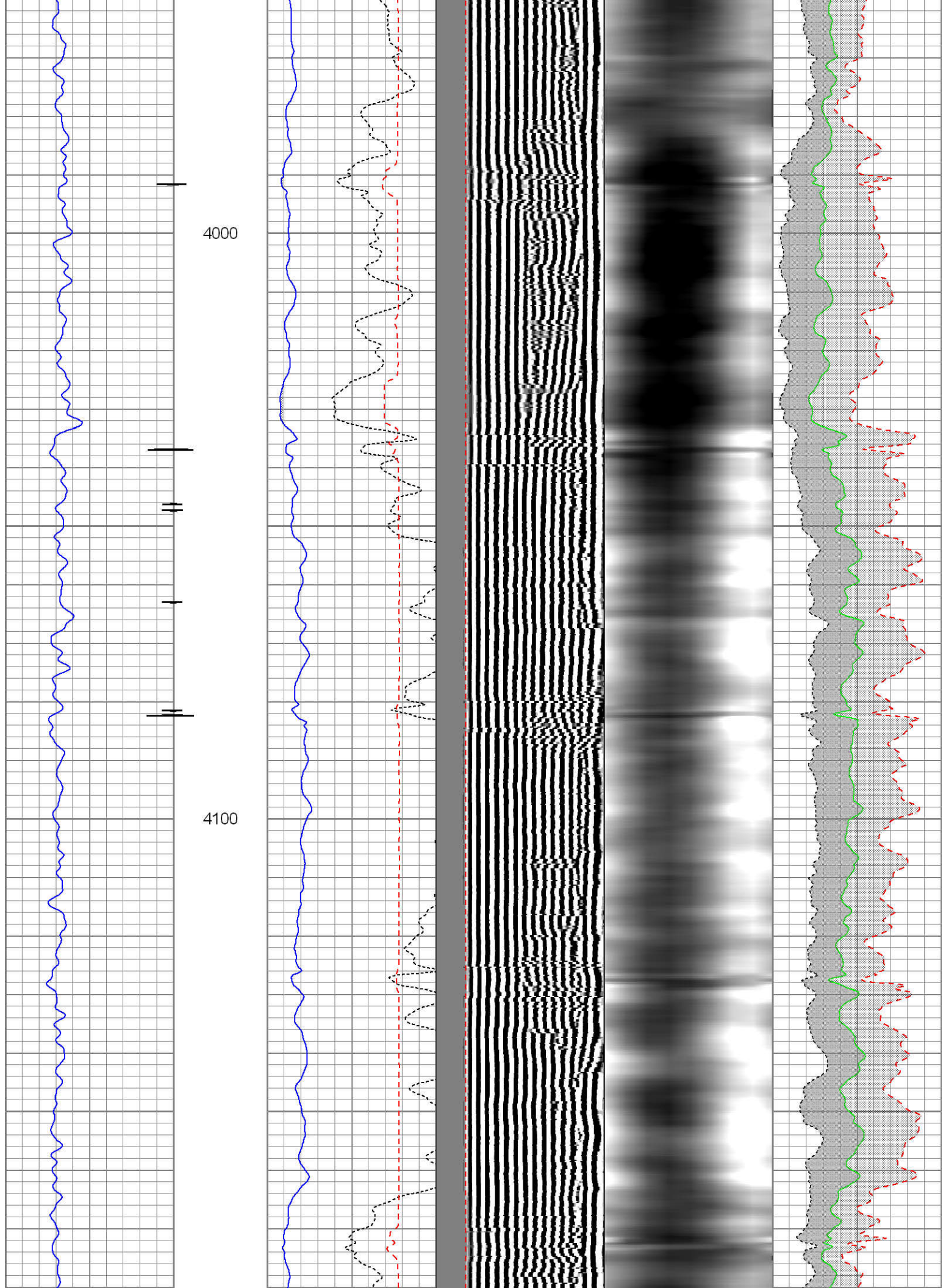




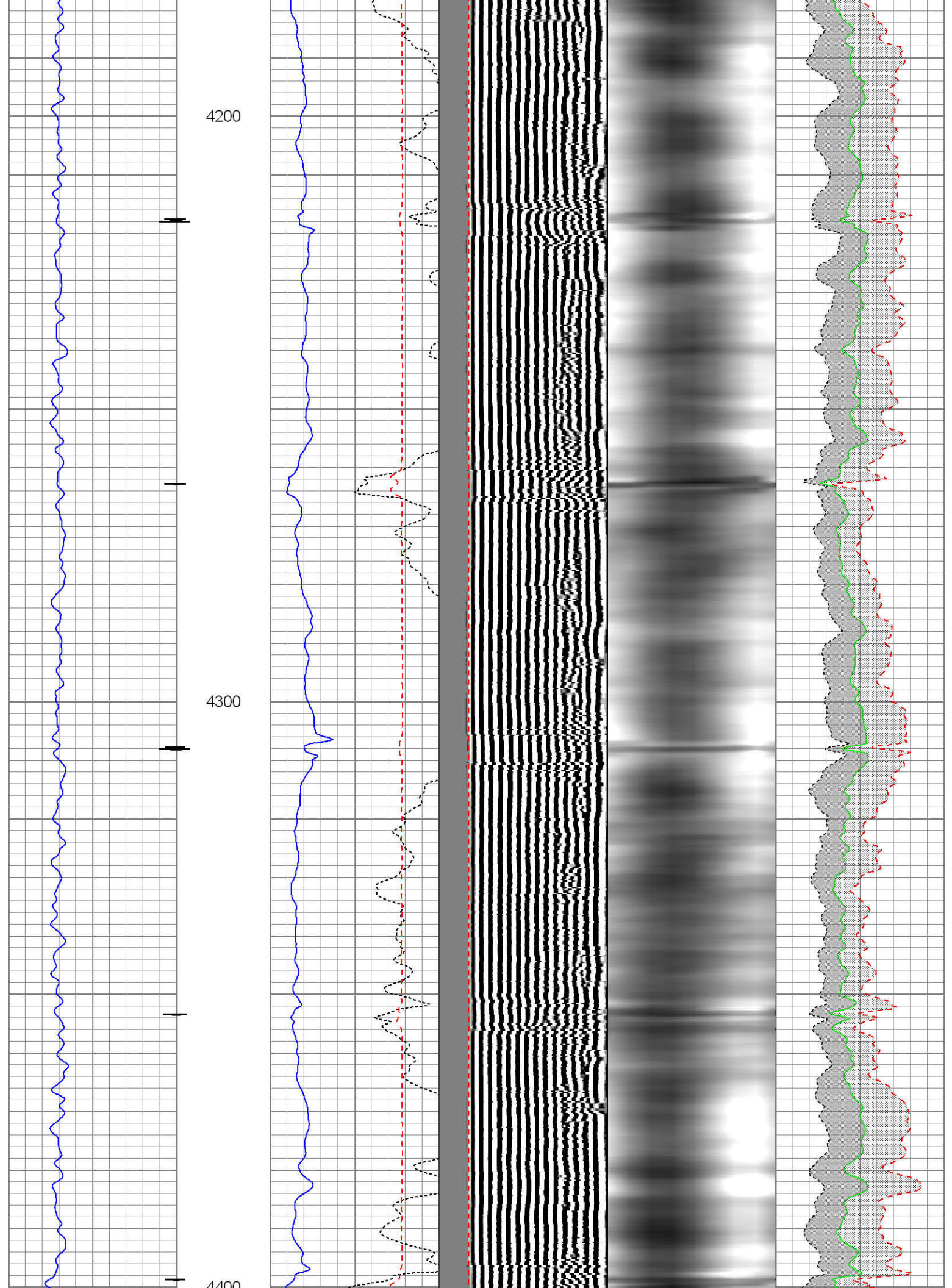




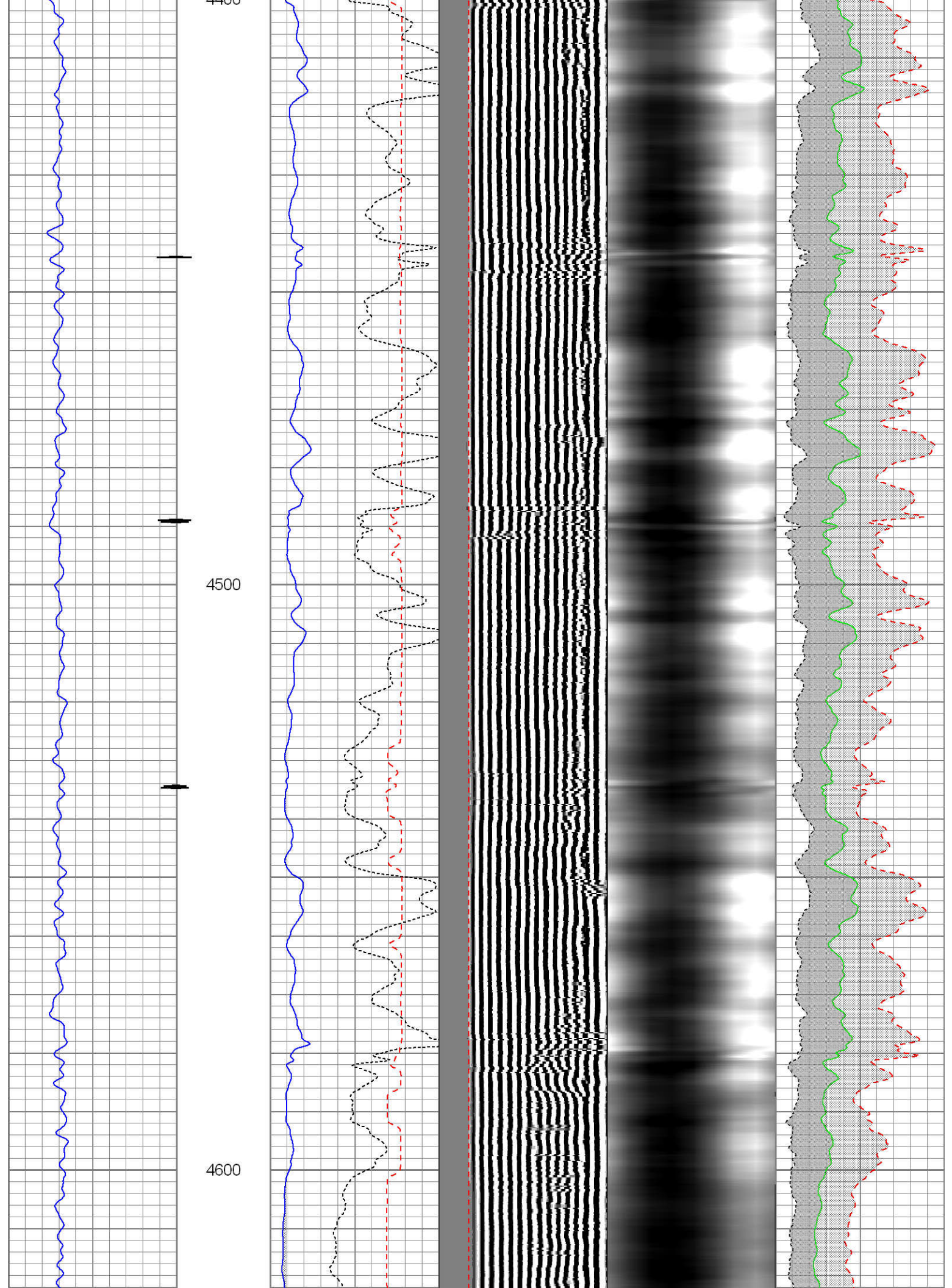




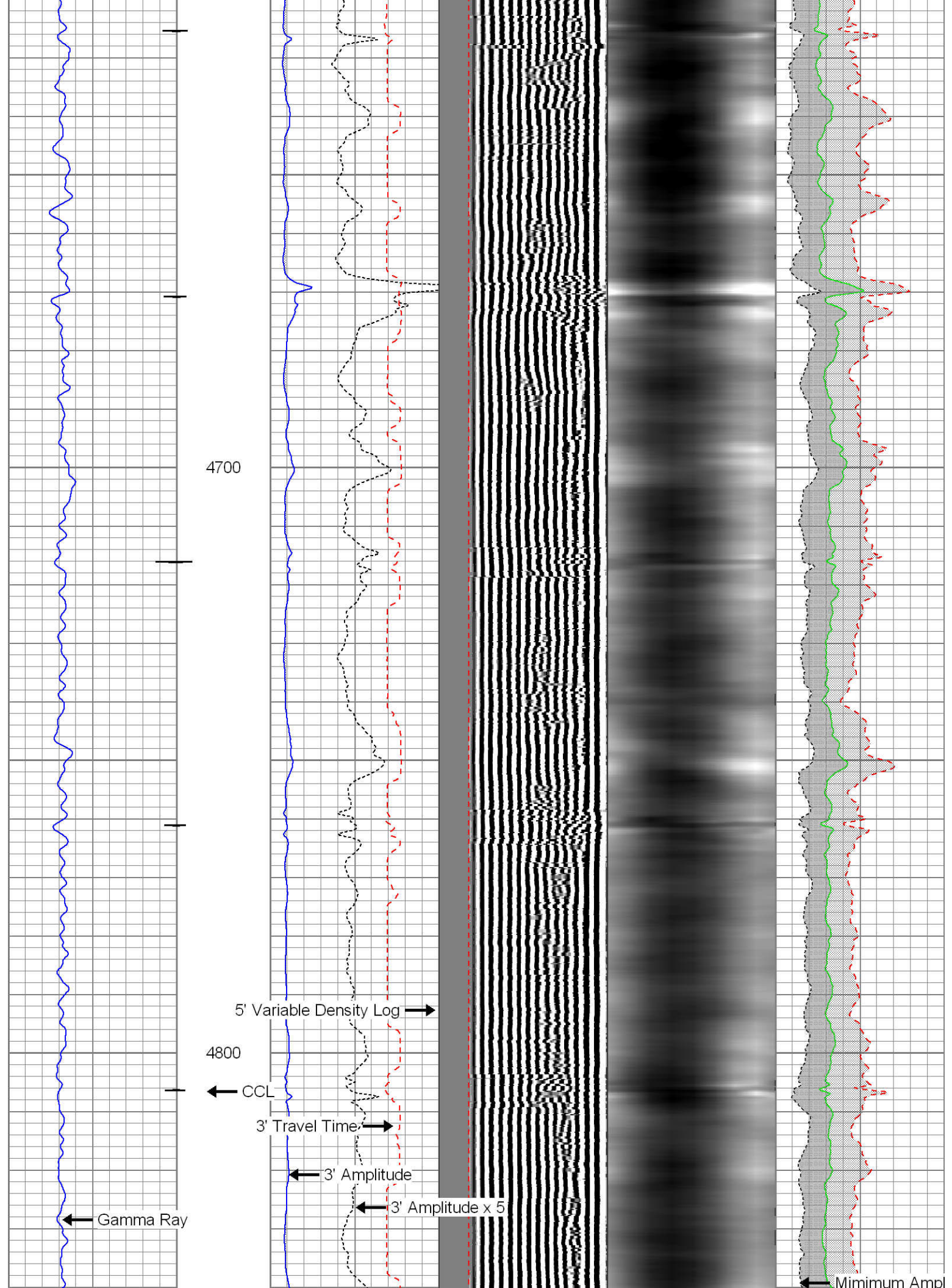




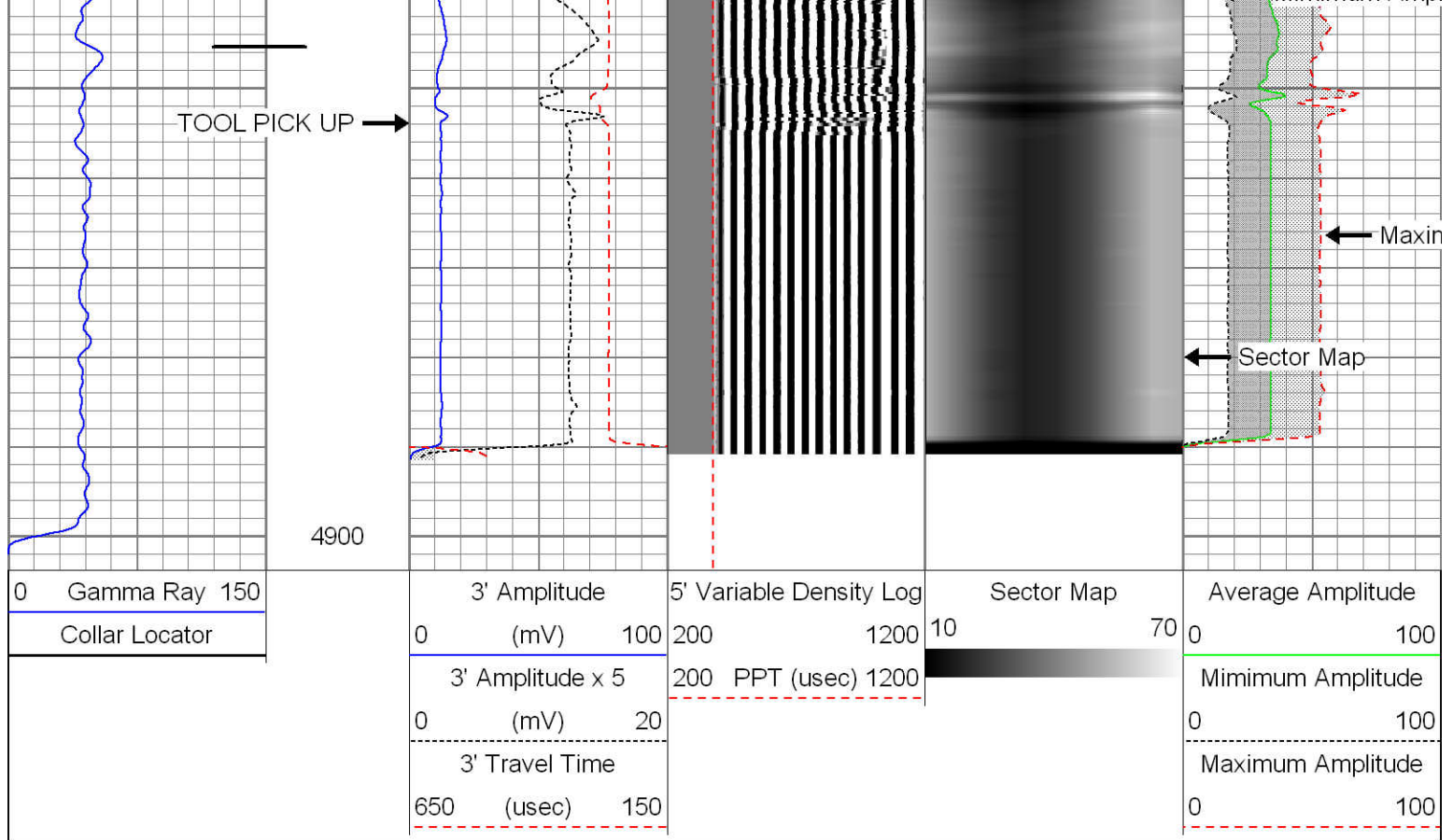






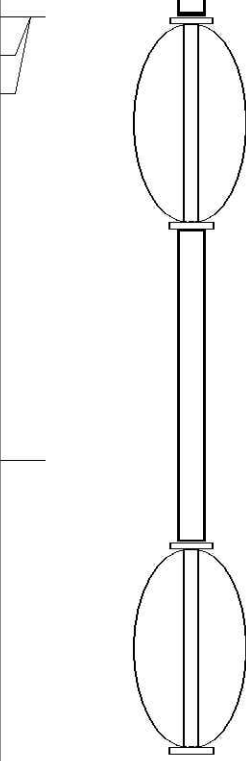






Sensor	Offset (ft)	Schematic	Description	Len (ft)	OD (in)	Wt (lb)
CCL	22.16		STNDRD Standard Cable Head	1.00	1.44	10.00
			CCL-275tekco (2.75TEKCO) 2 3/4 TEK CCL Earth Mag	1.92	2.75	20.00
			SDSCENT Centralizer	2.74	3.25	20.00
TEMP	16.40					
WVFS1	14.50		275CTEKSECWTWSLCANS-275RIB (1239.10 2 3/4" (R.I.B.) TOOL 3FT, 5FT and 8EA RIB SIGNALS 400 DEG "F" @20K PSI With Sliding Cans For Pressure Ballance	1239.10	2.75	102.00
WVFS2	14.50					
WVFS3	14.50					
WVFS4	14.50					
WVFS5	14.50					
WVFS6	14.50					
WVFS7	14.50					
WVFS8	14.50					
WVF3FT	13.77					
WVF5FT	12.79					



WVFCAL	9.48		SDSCENT Centralizer	2.74	3.25	20.00
WVFTEMP	9.48					
WVFSYNC	9.48					
GR	3.78		GR-Tek-Co (Tek-Co2) 2 3/4 400deg Scint gamma	4.00	2.75	40.00
			SDSCENT Centralizer	2.74	3.25	20.00
Dataset: whiting_razor_12-0141h.db: field/well/run1/pass4 Total Length: 24.24 ft Total Weight: 232.00 lb O.D. 3.25 in						

	<p>Company Whiting Oil and Gas</p> <p>Well Razor 12-0141H</p> <p>Field Red Tail</p> <p>County Weld</p> <p>State Colorado</p>
--	--