

# WELL LOCATION PLAT T4S, R64W, 6th P.M.

ConocoPhillips Company

Well location, ZUKOWSKI #17-1H, located as shown in the NE 1/4 NE 1/4 of Section 17, T4S, R64W, 6th P.M., Arapahoe County, Colorado.

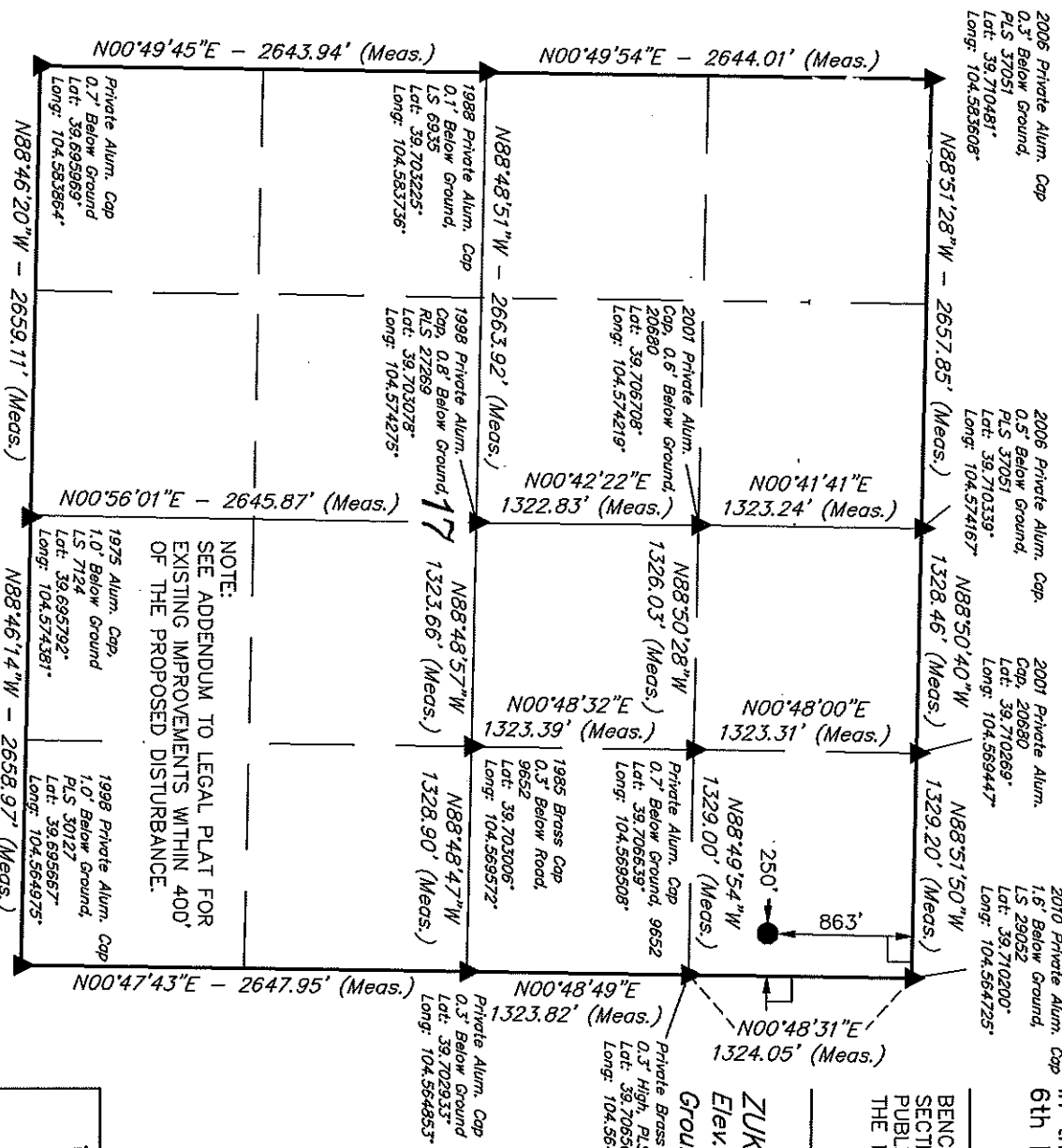
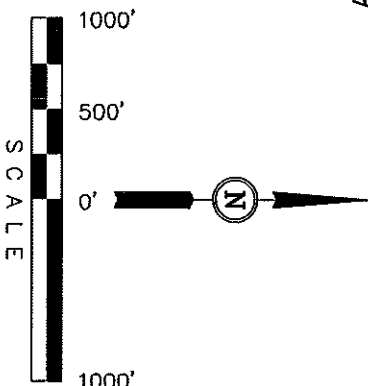
## BASIS OF ELEVATION

BENCHMARK 374 LOCATED ON THE SECTION LINE BETWEEN SECTIONS 12 & 13, T5S, R64W, 6th P.M., TAKEN FROM 1988 PUBLISHED DATUM BY THE UNITED STATES DEPARTMENT OF THE INTERIOR, GEOLOGICAL SURVEY AS BEING 6054.61 FEET.

## BASIS OF BEARINGS

BASIS OF BEARINGS IS A C.P.S. OBSERVATION.

ZUKOWSKI #17-1H  
Elev. Ungraded  
Ground = 5650'



NOTE:  
SEE ADDENDUM TO LEGAL PLAT FOR  
EXISTING IMPROVEMENTS WITHIN 400'  
OF THE PROPOSED DISTURBANCE.

## LEGEND:

- = 90° SYMBOL
- = PROPOSED WELL HEAD.
- ▲ = SECTION CORNERS LOCATED

PDOP = 1.6

MAD B3 (SURFACE LOCATION)	
LATITUDE = 39°42'28.24" (39.707844)	
LONGITUDE = 104°33'56.35" (104.565853)	
MAD 27 (SURFACE LOCATION)	
LATITUDE = 39°42'28.29" (39.707858)	
LONGITUDE = 104°33'54.47" (104.565131)	

## CERTIFICATE

THIS IS TO CERTIFY THAT THE ABOVE PLAT WAS PREPARED FROM FIELD NOTES OF ACTUAL SURVEYS MADE BY ME AND UNDER MY SUPERVISION AND THAT THE SAME ARE TRUE AND CORRECT TO THE BEST OF MY KNOWLEDGE AND BELIEF.

REGISTERED AND EXPIRING  
REGISTRATION IN THE STATE OF COLORADO  
DATE 08-12-12

UTIAH ENGINEERING & LAND SURVEYING  
85 SOUTH 200 EAST - VERNAL, UTAH 84078  
(435) 789-1017

SCALE	DATE SURVEYED:	DATE DRAWN:
1" = 1000'	10-25-12	10-30-12
PARTY	REFERENCES	
D.L.S. C.C. J.W.	G.L.O. PLAT	
WEATHER	FILE	
COOL	ConocoPhillips Company	

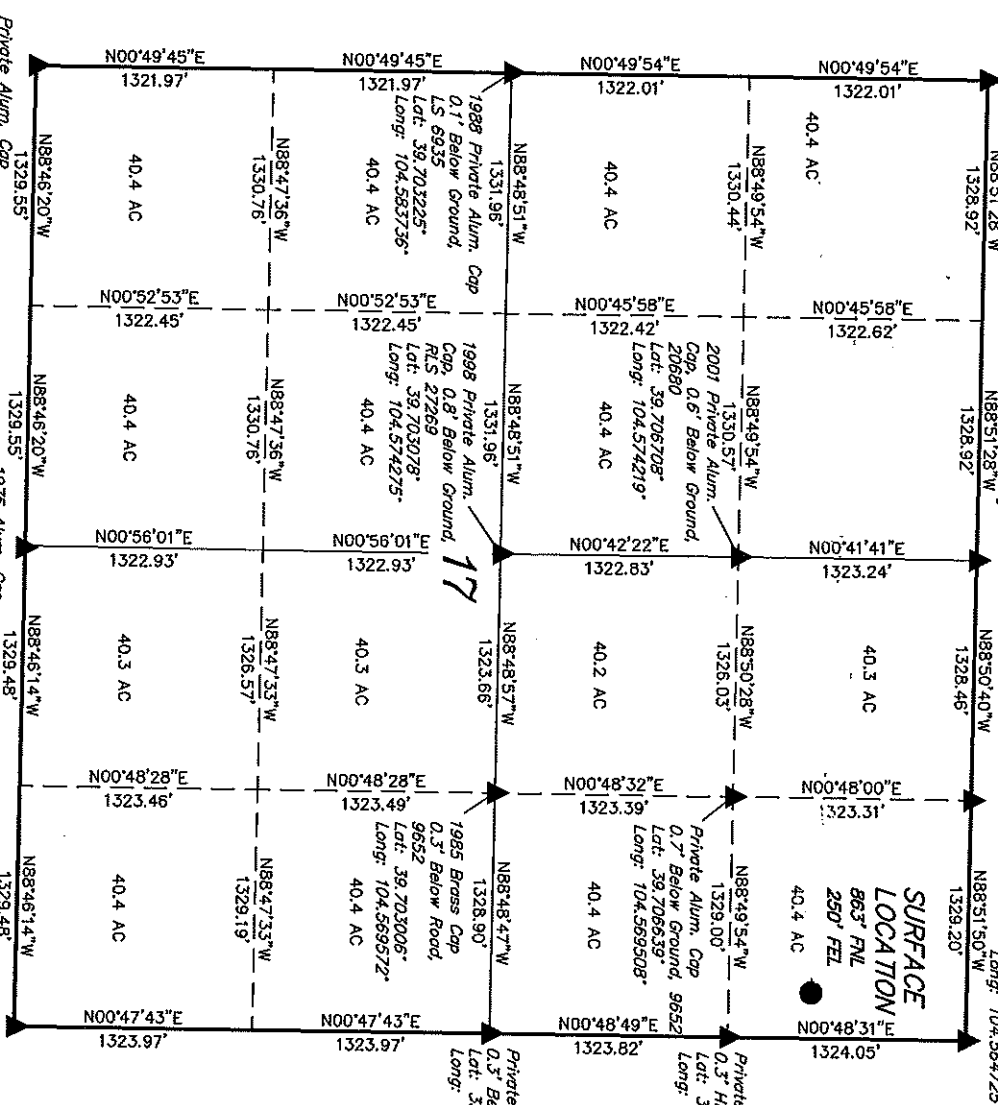
**ConocoPhillips Company**

2010 Private Alum  
1.6' Below Ground,  
L5 29052  
Lat: 39.710200°  
1.22 104.54705

Well location, ZUKOWSKI #17-1H, located as shown in the NE 1/4 NE 1/4 of Section 17, T4S, R64W, 6th P.M., Arapahoe County, Colorado.

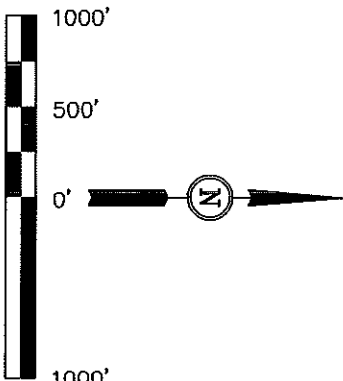
## BASIS OF ELEVATION

BENCHMARK 374 LOCATED ON THE SECTION LINE BETWEEN SECTIONS 12 & 13, T5S, R64W, 6th. P.M., TAKEN FROM 1988 PUBLISHED DATUM BY THE UNITED STATES DEPARTMENT OF THE INTERIOR, GEOLOGICAL SURVEY AS BEING 6054.61 FEET.



BASIS OF BEARINGS IS A G.P.S. OBSERVATION

## BASIS OF BEARINGS



THIS IS TO CERTIFY THAT THE ABOVE PLATS, MAPS, RECORDS, FIELD NOTES OF ACTUAL SURVEYS MADE BY ME OR UNDER MY SUPERVISION AND THAT THE SAME ARE TRUE AND CORRECT TO THE BEST OF MY KNOWLEDGE AND BELIEF.

REGISTERED AND EXPIRATION  
REGISTRATION YEAR 2002  
STATE OF COLORADO COLORADO

UNTAH ENGINEERING & LAND SURVEYING  
85 SOUTH 200 EAST - VERNAL, UTAH 84078

(435) 789-1017

$$\bar{1}'' = 1000'$$

10-2

DATE DRAWN:	10-30-12
-------------	----------

D.L.S. C.C. J.W.

G.L.O. PLAT

COOL

ConocoPhillips Company

**LEGEND:**

└── 90° SYMBOL

● = PROPOSED WELL HEAD.

SECTION CORNERS LOCATED