

<i>R</i>	<i>R</i>
58	57
<i>W</i>	<i>W</i>

S88°58'35"E - 2680.17' (Meas.)

$S89^{\circ}06'19''E - 2676.87'$ (Meas.)

<i>R</i>	<i>R</i>
58	57
<i>W</i>	<i>W</i>

Well location, CASTOR LD12-78HN located as shown in the SW 1/4 SW 1/4 of Section 12, T9N, R58W, 6th P.M., Weld County, Colorado.

SPOT ELEVATION LOCATED AT THE NORTHEAST CORNER OF SECTION 15, T9N, R58W, 6th P.M. TAKEN FROM THE GATEHOOK SPRING, QUADRANGLE, COLORADO, WELD COUNTY, 7.5 MINUTE QUAD (TOPOGRAPHIC MAP) PUBLISHED BY THE UNITED STATES DEPARTMENT OF THE INTERIOR, GEOLOGICAL SURVEY. SAID ELEVATION IS MARKED AS BEING 4679 FEET.

BASIS OF BEARINGS IS A G.P.S. OBSERVATION.



THIS IS TO CERTIFY THAT THE ABOVE PLAT WAS PREPARED FROM
FIELD NOTES OF ACTUAL SURVEYS MADE BY ME OR UNDER MY
SUPERVISION AND THAT THE SAME ARE TRUE AND CORRECT TO THE
BEST OF MY KNOWLEDGE AND BELIEF.

REGISTERED LAND SURVEYOR
REGISTRATION NO. 17422
STATE OF COLORADO
10-09-12

L = 90° SYMBOL
 ● = PROPOSED WELL HEAD.
 ▲ = SECTION CORNERS LOCATED.
 △ = SECTION CORNERS RE-ESTABLISHED. (Not Set on Ground.)

EXISTING FEATURE	DIRECTION	LENGTH
PROPERTY LINE	SOUTH	288'

PDOP = 1.6

NAD 83 (TARGET BOTTOM HOLE)	NAD 83 (SURFACE LOCATION)
LATITUDE = 40°46'17.49" (40.771525)	LATITUDE = 40°45'34.84" (40.759678)
LONGITUDE = 103°49'09.31" (103.819253)	LONGITUDE = 103°49'09.65" (103.819347)

85 SOUTH 200 EAST - VERNAL, UTAH 84078

(435) 789-1017

SCALE
1" = 1000'

DATE SURVEYED:
09-17-12

DATE DRAWN:
10-04-12

PARTY			
DALLAS NIELSEN	G.W.	H.K.W.	

REFERENCES	G.L.O. PLAT
------------	-------------

WEATHER	WARM
---------	------

FILE	NOBLE ENERGY, INC.
------	--------------------

SITE SKETCH

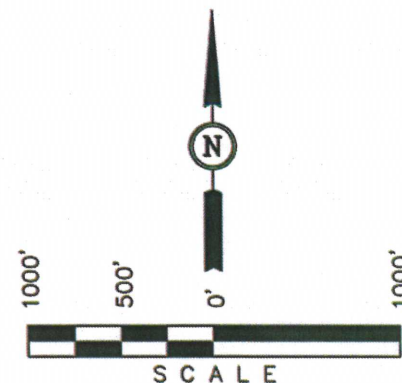
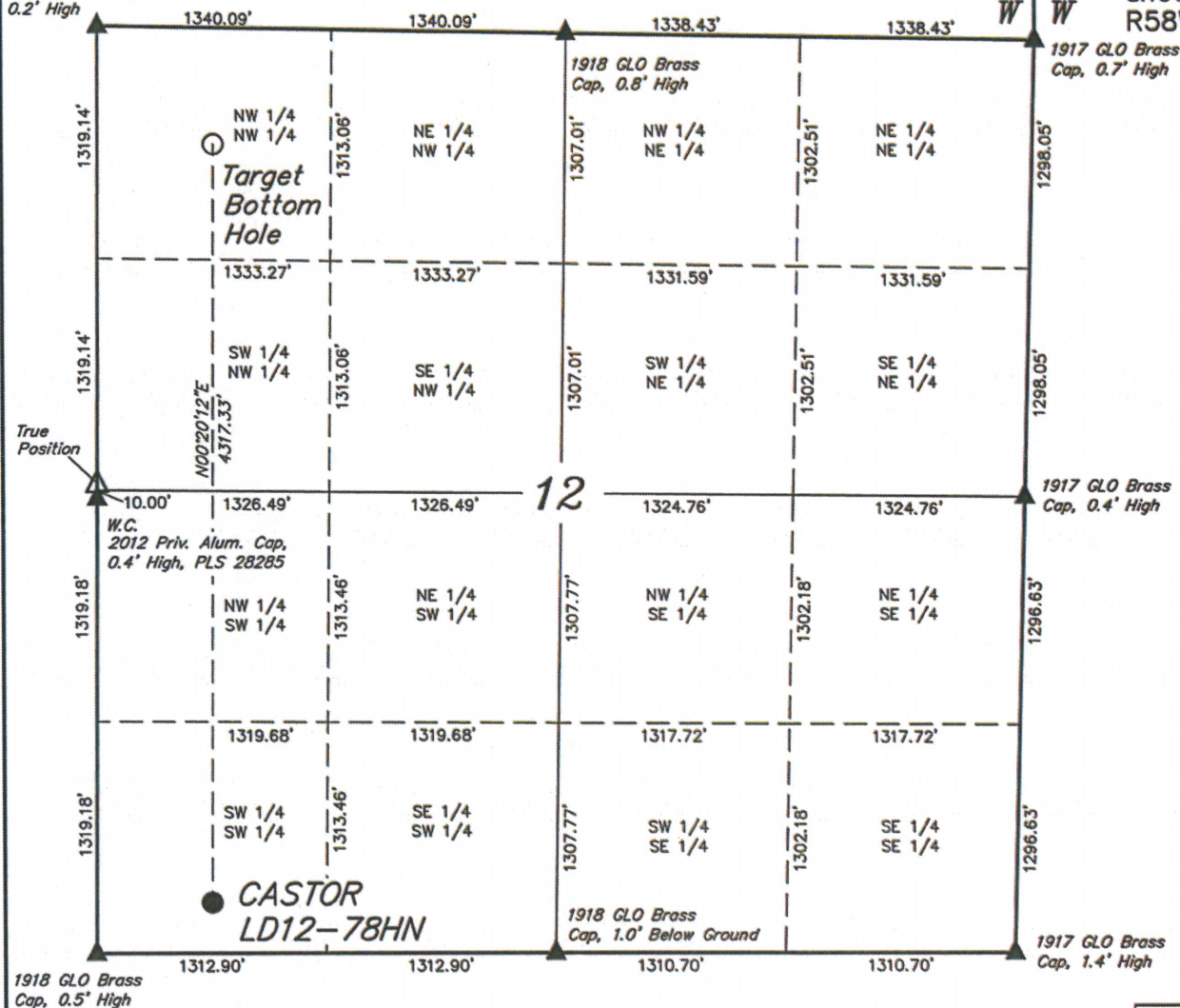
T9N, R58W, 6th P.M.

NOBLE ENERGY, INC.

Well location, CASTOR LD12-78HN located as shown in the SW 1/4 SW 1/4 of Section 12, T9N, R58W, 6th P.M., Weld County, Colorado.

2010 Alum. Cap.
0.2' High

R 58
W 57
W



LEGEND:

- └─┘ = 90° SYMBOL
 - = PROPOSED WELL HEAD.
 - ▲ = SECTION CORNERS LOCATED.
 - △ = SECTION CORNERS RE-ESTABLISHED. (Not Set on Ground.)
 - = BOTTOM HOLE
- NO WELLS WITHIN SECTION

UINTAH ENGINEERING & LAND SURVEYING
85 SOUTH 200 EAST - VERNAL, UTAH 84078
(435) 789-1017

SCALE 1" = 1000'	DATE SURVEYED: 09-17-12	DATE DRAWN: 10-04-12
PARTY DALLAS NIELSEN G.W. H.K.W.	REFERENCES G.L.O. PLAT	
WEATHER WARM	FILE NOBLE ENERGY, INC.	