

LEGEND:

PROPOSED LOCATION

ConocoPhillips Company

ZUKOWSKI #17-1H
SECTION 17, T4S, R64W, 6th P.M.
863' FNL 250' FEL



Uintah Engineering & Land Surveying
85 South 200 East Vernal, Utah 84078
(435) 789-1017 * FAX (435) 789-1813

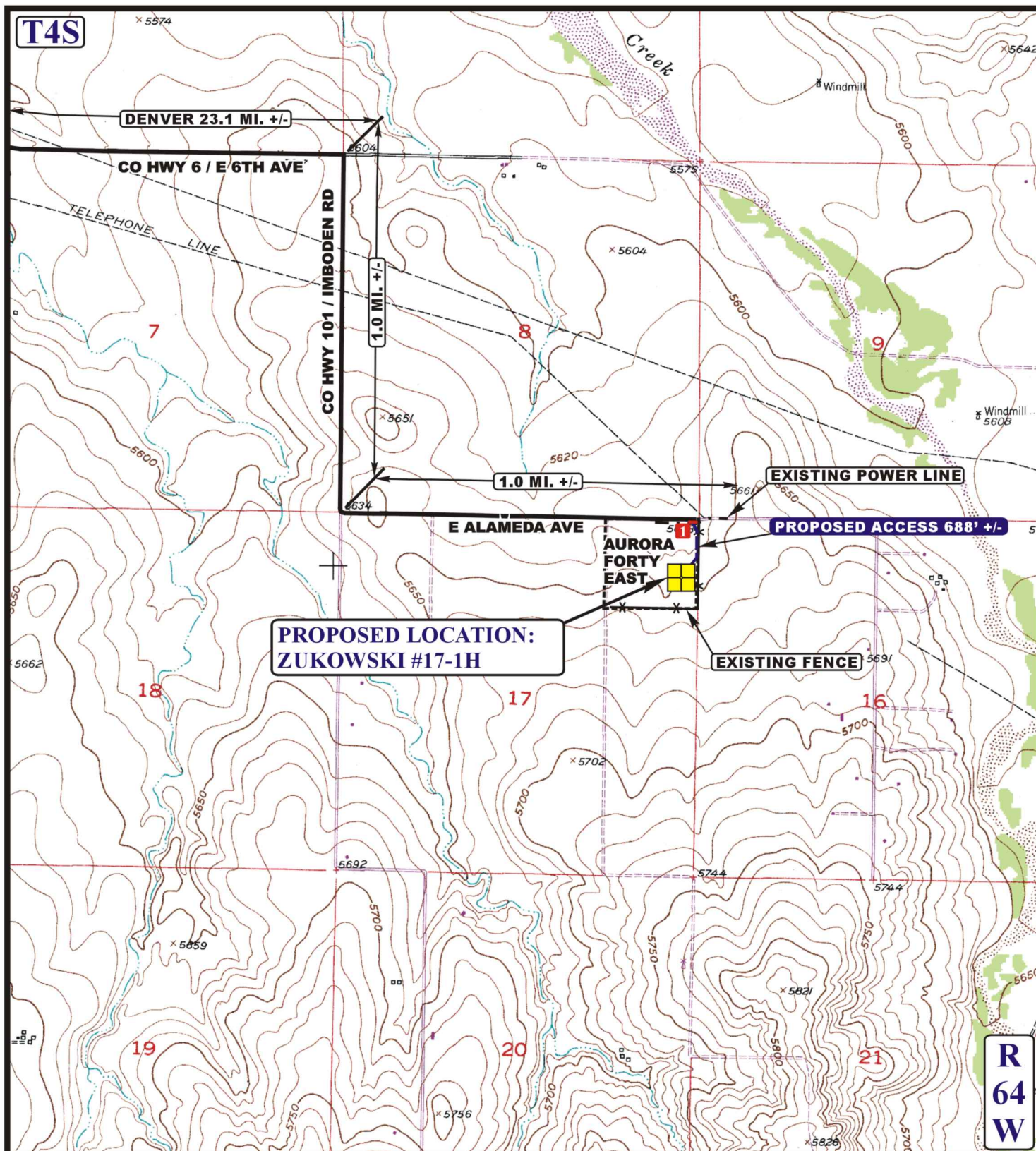


**ACCESS ROAD
MAP**

11 02 12
MONTH DAY YEAR

SCALE: 1:100,000 DRAWN BY: J.L.H. REVISED: 00-00-00





LEGEND:

- EXISTING ROAD
- - - PROPOSED ACCESS ROAD
- - - EXISTING POWER LINE
- * * * EXISTING FENCE
- 1** LOW WATER CROSSING REQUIRED



ConocoPhillips Company

ZUKOWSKI #17-1H
SECTION 17, T4S, R64W, 6th P.M.
863' FNL 250' FEL



Uintah Engineering & Land Surveying
 85 South 200 East Vernal, Utah 84078
 (435) 789-1017 * FAX (435) 789-1813

**ACCESS ROAD
MAP**

11 02 12
 MONTH DAY YEAR

SCALE: 1" = 2000' DRAWN BY: J.L.H. REVISED: 00-00-00

