

WELL LOCATION PLAT T4S, R64W, 6th P.M.

ConocoPhillips Company

Well location, ZUKOWSKI #17-1H, located as shown in the NE 1/4 NE 1/4 of Section 17, T4S, R64W, 6th P.M., Arapahoe County, Colorado.

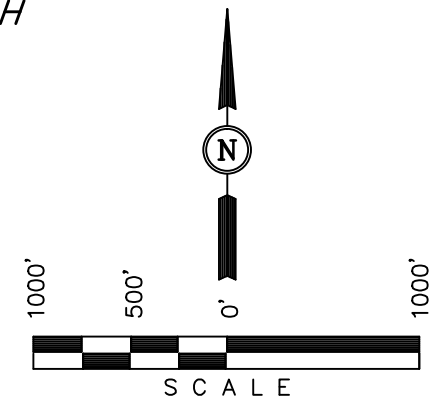
BASIS OF ELEVATION

BENCHMARK 374 LOCATED ON THE SECTION LINE BETWEEN SECTIONS 12 & 13, T5S, R64W, 6th. P.M., TAKEN FROM 1988 PUBLISHED DATUM BY THE UNITED STATES DEPARTMENT OF THE INTERIOR, GEOLOGICAL SURVEY AS BEING 6054.61 FEET.

BASIS OF BEARINGS

BASIS OF BEARINGS IS A G.P.S. OBSERVATION.

ZUKOWSKI #17-1H
Elev. Ungraded
Ground = 5650'



CERTIFICATE

THIS IS TO CERTIFY THAT THE ABOVE PLAT WAS PREPARED FROM FIELD NOTES OF ACTUAL SURVEYS MADE BY ME OR UNDER MY SUPERVISION AND THAT THE SAME ARE TRUE AND CORRECT TO THE BEST OF MY KNOWLEDGE AND BELIEF.

REGISTERED LAND SURVEYOR
REGISTRATION NO. 17492
STATE OF COLORADO
99-08-12

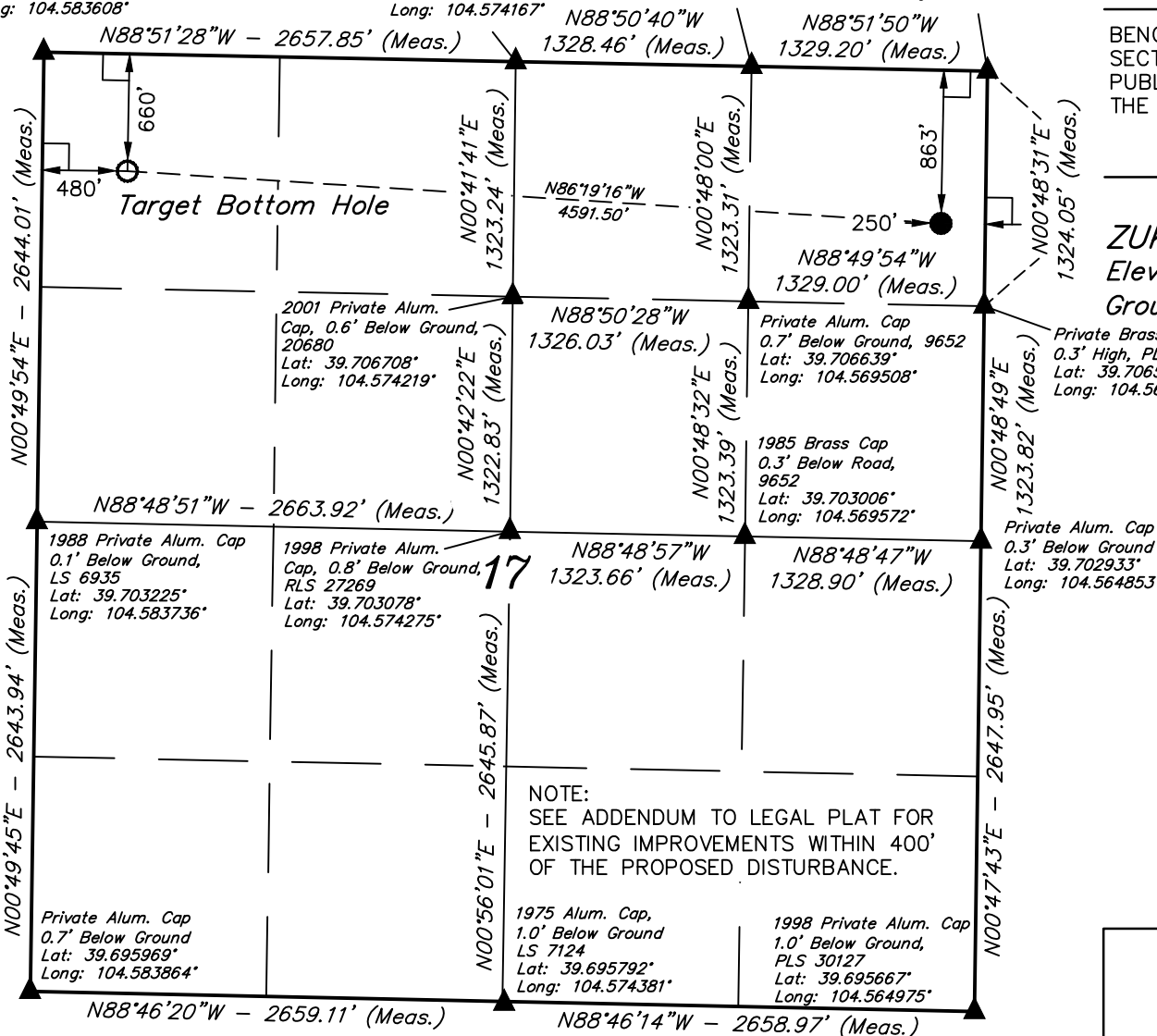
UINTAH ENGINEERING & LAND SURVEYING
85 SOUTH 200 EAST - VERNAL, UTAH 84078
(435) 789-1017

2006 Private Alum. Cap
0.3' Below Ground,
PLS 37051
Lat: 39.710481°
Long: 104.583608°

2006 Private Alum. Cap.
0.5' Below Ground,
PLS 37051
Lat: 39.710339°
Long: 104.574167°

2001 Private Alum.
Cap, 20680
Lat: 39.710269°
Long: 104.569447°

2010 Private Alum. Cap
1.6' Below Ground,
LS 29052
Lat: 39.710200°
Long: 104.564725°



NOTE:
SEE ADDENDUM TO LEGAL PLAT FOR
EXISTING IMPROVEMENTS WITHIN 400'
OF THE PROPOSED DISTURBANCE.

LEGEND:

- └─┘ = 90° SYMBOL
- = PROPOSED WELL HEAD.
- ▲ = SECTION CORNERS LOCATED.

PDOP = 1.6

NAD 83 (TARGET BOTTOM HOLE)	NAD 83 (SURFACE LOCATION)
LATITUDE = 39°42'31.12" (39.708644)	LATITUDE = 39°42'28.24" (39.707844)
LONGITUDE = 104°34'54.97" (104.581936)	LONGITUDE = 104°33'56.35" (104.565653)
NAD 27 (TARGET BOTTOM HOLE)	NAD 27 (SURFACE LOCATION)
LATITUDE = 39°42'31.17" (39.708658)	LATITUDE = 39°42'28.29" (39.707858)
LONGITUDE = 104°34'53.09" (104.581414)	LONGITUDE = 104°33'54.47" (104.565131)

SCALE 1" = 1000'	DATE SURVEYED: 10-25-12	DATE DRAWN: 10-30-12
PARTY D.L.S. C.C. J.W.	REFERENCES G.L.O. PLAT	
WEATHER COOL	FILE ConocoPhillips Company	

SECTION BREAKDOWN T4S, R64W, 6th P.M.

ConocoPhillips Company

Well location, ZUKOWSKI #17-1H, located as shown in the NE 1/4 NE 1/4 of Section 17, T4S, R64W, 6th P.M., Arapahoe County, Colorado.

2006 Private Alum. Cap.
0.3' Below Ground,
PLS 37051
Lat: 39.710481°
Long: 104.583608°

2006 Private Alum. Cap.
0.5' Below Ground,
PLS 37051
Lat: 39.710339°
Long: 104.574167°

2001 Private Alum.
Cap, 20680
Lat: 39.710269°
Long: 104.569447°

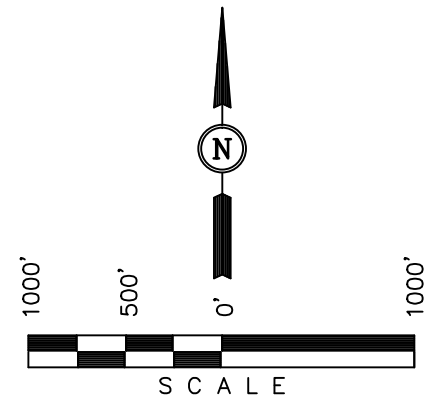
2010 Private Alum. Cap
1.6' Below Ground,
LS 29052
Lat: 39.710200°
Long: 104.564725°

BASIS OF ELEVATION

BENCHMARK 374 LOCATED ON THE SECTION LINE BETWEEN SECTIONS 12 & 13, T5S, R64W, 6th. P.M., TAKEN FROM 1988 PUBLISHED DATUM BY THE UNITED STATES DEPARTMENT OF THE INTERIOR, GEOLOGICAL SURVEY AS BEING 6054.61 FEET.

BASIS OF BEARINGS

BASIS OF BEARINGS IS A G.P.S. OBSERVATION.



CERTIFICATE

THIS IS TO CERTIFY THAT THE ABOVE MAP WAS PREPARED FROM FIELD NOTES OF ACTUAL SURVEYS MADE BY ME OR UNDER MY SUPERVISION AND THAT THE SAME ARE TRUE AND CORRECT TO THE BEST OF MY KNOWLEDGE AND BELIEF.

REGISTERED LAND SURVEYOR
REGISTRATION NO. 17492
STATE OF COLORADO
09-08-12

UINTAH ENGINEERING & LAND SURVEYING
85 SOUTH 200 EAST - VERNAL, UTAH 84078
(435) 789-1017

LEGEND:

- └─┘ = 90° SYMBOL
- = PROPOSED WELL HEAD.
- ▲ = SECTION CORNERS LOCATED.

NAD 83 (TARGET BOTTOM HOLE)	NAD 83 (SURFACE LOCATION)
LATITUDE = 39°42'31.12" (39.708644)	LATITUDE = 39°42'28.24" (39.707844)
LONGITUDE = 104°34'54.97" (104.581936)	LONGITUDE = 104°33'56.35" (104.565653)
NAD 27 (TARGET BOTTOM HOLE)	NAD 27 (SURFACE LOCATION)
LATITUDE = 39°42'31.17" (39.708658)	LATITUDE = 39°42'28.29" (39.707858)
LONGITUDE = 104°34'53.09" (104.581414)	LONGITUDE = 104°33'54.47" (104.565131)

PDOP = 1.6

SCALE 1" = 1000'	DATE SURVEYED: 10-25-12	DATE DRAWN: 10-30-12
PARTY D.L.S. C.C. J.W.	REFERENCES G.L.O. PLAT	
WEATHER COOL	FILE ConocoPhillips Company	