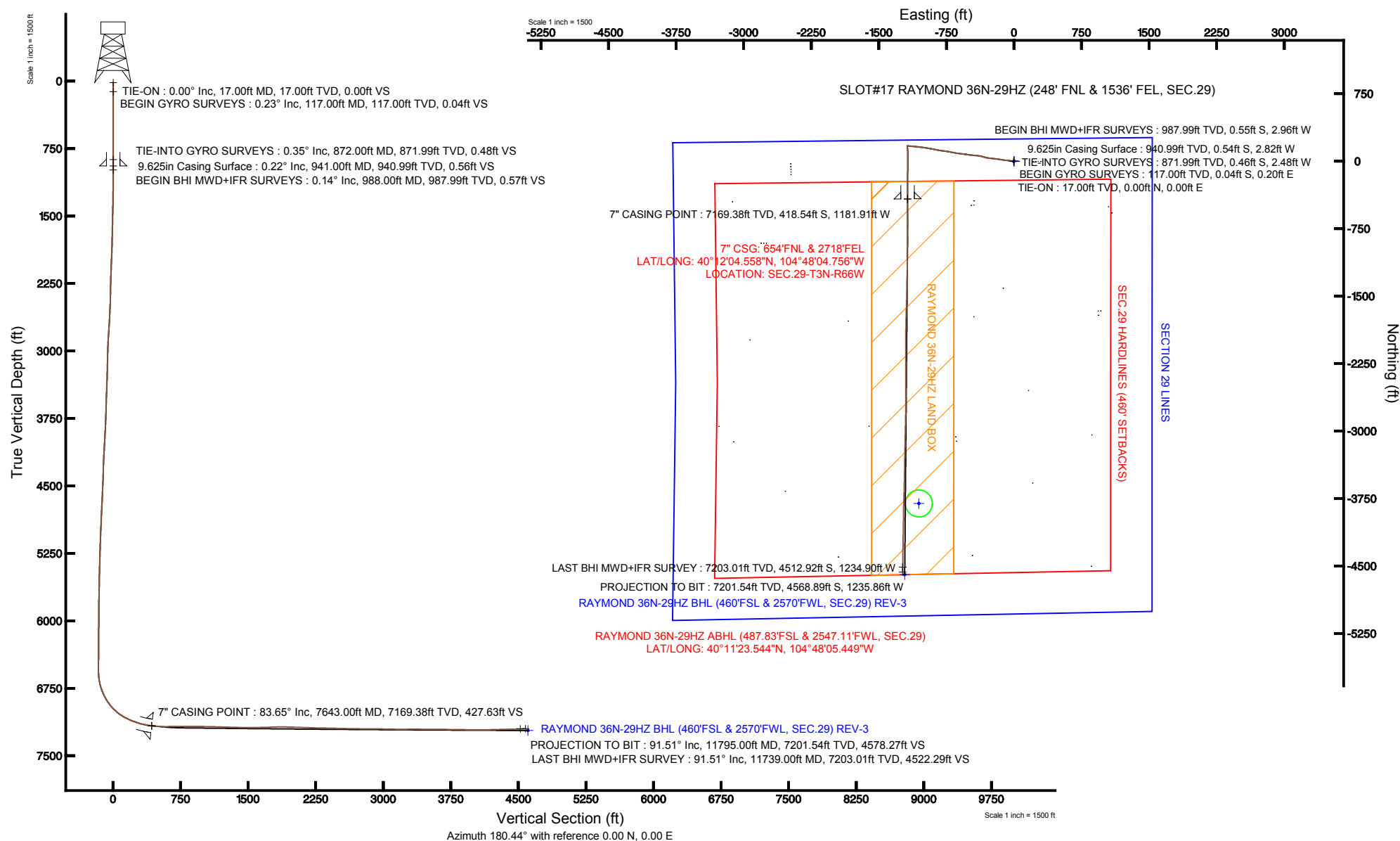


Location:	COLORADO	Slot:	SLOT#17 RAYMOND 36N-29HZ (248' FNL & 1536' FEL, SEC.29)
Field:	WELD COUNTY (KERR MCGEE)	Well:	RAYMOND 36N-29HZ
Facility:	SEC.29-T3N-R66W	Wellbore:	RAYMOND 36N-29HZ PWB

True vertical depths are referenced to XTREME 8 (RT)	Grid System: NAD83 / Lambert Colorado SP, Northern Zone (501), US feet
Measured depths are referenced to XTREME 8 (RT)	North Reference: True north
XTREME 8 (RT) to Mean Sea Level: 4941 feet	Scale: True distance
Mean Sea Level to Mud line (At Slot: SLOT#17 RAYMOND 36N-29HZ (248' FNL & 1536' FEL, SEC.29)): 0 feet	Depths are in feet
Coordinates are in feet referenced to Slot	Created by: wilsje02 on 3/6/2013





Actual Wellpath Report

RAYMOND 36N-29HZ AWP

Page 1 of 7



REFERENCE WELLPATH IDENTIFICATION

Operator	KERR-MCGEE OIL & GAS ONSHORE LP	Slot	SLOT#17 RAYMOND 36N-29HZ (248' FNL & 1536' FEL, SEC.29)
Area	COLORADO	Well	RAYMOND 36N-29HZ
Field	WELD COUNTY (KERR MCGEE)	Wellbore	RAYMOND 36N-29HZ AWB
Facility	SEC.29-T3N-R66W		

REPORT SETUP INFORMATION

Projection System	NAD83 / Lambert Colorado SP, Northern Zone (501), US feet	Software System	WellArchitect® 3.0.2
North Reference	True	User	Wilsjef02
Scale	0.999957	Report Generated	3/6/2013 at 14:08:23
Convergence at slot	0.45° East	Database/Source file	WellArchitectDB/RAYMOND_36N-29HZ_AWB.xml

WELLPATH LOCATION

	Local coordinates		Grid coordinates		Geographic coordinates	
	North[ft]	East[ft]	Easting[US ft]	Northing[US ft]	Latitude	Longitude
Slot Location	912.72	2743.07	3196336.22	1317360.37	40°12'08.694"N	104°47'49.524"W
Facility Reference Pt			3193600.49	1316426.28	40°11'59.676"N	104°48'24.876"W
Field Reference Pt			3197771.84	1268891.29	40°04'09.600"N	104°47'36.000"W

WELLPATH DATUM

Calculation method	Minimum curvature	XTREME 8 (RT) to Facility Vertical Datum	4941.00ft
Horizontal Reference Pt	Slot	XTREME 8 (RT) to Mean Sea Level	4941.00ft
Vertical Reference Pt	XTREME 8 (RT)	XTREME 8 (RT) to Mud Line at Slot (SLOT#17 RAYMOND 36N-29HZ (248' FNL & 1536' FEL, SEC.29))	4941.00ft
MD Reference Pt	XTREME 8 (RT)	Section Origin	N 0.00, E 0.00 ft
Field Vertical Reference	Mean Sea Level	Section Azimuth	195.14°



Actual Wellpath Report

RAYMOND 36N-29HZ AWP

Page 2 of 7



REFERENCE WELLPATH IDENTIFICATION

Operator	KERR-MCGEE OIL & GAS ONSHORE LP	Slot	SLOT#17 RAYMOND 36N-29HZ (248' FNL & 1536' FEL, SEC.29)
Area	COLORADO	Well	RAYMOND 36N-29HZ
Field	WELD COUNTY (KERR MCGEE)	Wellbore	RAYMOND 36N-29HZ AWB
Facility	SEC.29-T3N-R66W		

WELLPATH DATA (153 stations) † = interpolated/extrapolated station

MD [ft]	Inclination [°]	Azimuth [°]	TVD [ft]	Vert Sect [ft]	North [ft]	East [ft]	Latitude	Longitude	DLS [°/100ft]	Comments
0.00†	0.000	100.530	0.00	0.00	0.00	0.00	40°12'08.694"N	104°47'49.524"W	0.00	
17.00	0.000	100.530	17.00	0.00	0.00	0.00	40°12'08.694"N	104°47'49.524"W	0.00	TIE-ON
117.00	0.230	100.530	117.00	-0.02	-0.04	0.20	40°12'08.694"N	104°47'49.521"W	0.23	BEGIN GYRO SURVEYS
217.00	0.140	242.670	217.00	0.05	-0.13	0.29	40°12'08.693"N	104°47'49.520"W	0.35	
317.00	0.040	224.500	317.00	0.16	-0.21	0.15	40°12'08.692"N	104°47'49.522"W	0.10	
417.00	0.130	312.380	417.00	0.14	-0.16	0.04	40°12'08.692"N	104°47'49.523"W	0.13	
517.00	0.310	315.370	517.00	-0.05	0.11	-0.23	40°12'08.695"N	104°47'49.527"W	0.18	
617.00	0.410	256.810	617.00	-0.01	0.22	-0.77	40°12'08.696"N	104°47'49.534"W	0.36	
717.00	0.470	240.240	716.99	0.45	-0.06	-1.47	40°12'08.693"N	104°47'49.543"W	0.14	
817.00	0.380	253.150	816.99	0.91	-0.36	-2.15	40°12'08.690"N	104°47'49.552"W	0.13	
872.00	0.350	254.130	871.99	1.09	-0.46	-2.48	40°12'08.689"N	104°47'49.556"W	0.06	TIE-INTO GYRO SURVEYS
988.00	0.140	273.640	987.99	1.31	-0.55	-2.96	40°12'08.689"N	104°47'49.562"W	0.19	BEGIN BHI MWD+IFR SURVEYS
1049.00	0.220	285.590	1048.99	1.32	-0.51	-3.15	40°12'08.689"N	104°47'49.565"W	0.14	
1139.00	2.190	276.940	1138.96	1.56	-0.26	-5.02	40°12'08.691"N	104°47'49.589"W	2.19	
1230.00	4.450	279.840	1229.81	2.14	0.55	-10.23	40°12'08.699"N	104°47'49.656"W	2.49	
1321.00	6.320	277.690	1320.40	3.11	1.83	-18.67	40°12'08.712"N	104°47'49.765"W	2.07	
1412.00	8.210	280.090	1410.67	4.33	3.64	-30.03	40°12'08.730"N	104°47'49.911"W	2.10	
1497.00	10.170	279.270	1494.57	5.63	5.91	-43.42	40°12'08.752"N	104°47'50.084"W	2.31	
1583.00	11.220	276.080	1579.08	7.73	8.02	-59.23	40°12'08.773"N	104°47'50.287"W	1.40	
1668.00	11.360	275.580	1662.43	10.42	9.71	-75.78	40°12'08.790"N	104°47'50.501"W	0.20	
1753.00	11.890	275.920	1745.69	13.21	11.42	-92.83	40°12'08.807"N	104°47'50.720"W	0.63	
1839.00	13.450	276.310	1829.59	16.16	13.44	-111.58	40°12'08.827"N	104°47'50.962"W	1.82	
1924.00	14.940	279.280	1911.99	18.80	16.29	-132.22	40°12'08.855"N	104°47'51.228"W	1.95	
2009.00	15.640	279.160	1993.99	21.11	19.88	-154.35	40°12'08.890"N	104°47'51.513"W	0.82	
2094.00	15.350	278.480	2075.90	23.61	23.36	-176.79	40°12'08.925"N	104°47'51.802"W	0.40	
2180.00	14.720	277.700	2158.95	26.34	26.51	-198.87	40°12'08.956"N	104°47'52.087"W	0.77	
2264.00	15.090	275.400	2240.13	29.57	28.97	-220.33	40°12'08.980"N	104°47'52.364"W	0.83	
2350.00	13.770	275.310	2323.41	33.21	30.97	-241.67	40°12'09.000"N	104°47'52.639"W	1.54	
2435.00	13.710	276.960	2405.98	36.37	33.12	-261.74	40°12'09.021"N	104°47'52.897"W	0.47	
2520.00	13.520	277.930	2488.59	39.05	35.72	-281.58	40°12'09.047"N	104°47'53.153"W	0.35	
2605.00	13.260	281.140	2571.28	40.97	38.97	-300.99	40°12'09.079"N	104°47'53.403"W	0.93	
2690.00	13.380	285.550	2654.00	41.58	43.49	-320.03	40°12'09.124"N	104°47'53.648"W	1.20	
2776.00	13.820	284.700	2737.58	41.59	48.76	-339.55	40°12'09.176"N	104°47'53.900"W	0.56	
2861.00	15.020	284.320	2819.91	41.82	54.06	-360.04	40°12'09.228"N	104°47'54.164"W	1.42	
2946.00	15.970	281.440	2901.82	42.73	59.11	-382.17	40°12'09.278"N	104°47'54.449"W	1.44	
3032.00	15.990	275.120	2984.50	45.56	62.51	-405.57	40°12'09.312"N	104°47'54.751"W	2.02	
3117.00	14.800	275.050	3066.45	49.49	64.51	-428.05	40°12'09.331"N	104°47'55.041"W	1.40	
3202.00	15.280	275.790	3148.54	53.21	66.60	-450.00	40°12'09.352"N	104°47'55.324"W	0.61	
3287.00	15.770	275.780	3230.43	56.91	68.89	-472.64	40°12'09.375"N	104°47'55.615"W	0.58	
3373.00	15.050	277.170	3313.34	60.36	71.46	-495.34	40°12'09.400"N	104°47'55.908"W	0.94	
3458.00	15.260	278.370	3395.39	63.20	74.47	-517.36	40°12'09.430"N	104°47'56.192"W	0.44	
3543.00	15.630	278.120	3477.32	65.92	77.71	-539.76	40°12'09.462"N	104°47'56.480"W	0.44	
3628.00	15.210	277.250	3559.26	68.85	80.74	-562.16	40°12'09.492"N	104°47'56.769"W	0.56	
3714.00	15.340	276.420	3642.22	72.12	83.43	-584.66	40°12'09.518"N	104°47'57.059"W	0.30	
3799.00	15.660	276.420	3724.13	75.56	85.97	-607.23	40°12'09.544"N	104°47'57.350"W	0.38	



Actual Wellpath Report

RAYMOND 36N-29HZ AWP

Page 3 of 7



REFERENCE WELLPATH IDENTIFICATION

Operator	KERR-MCGEE OIL & GAS ONSHORE LP	Slot	SLOT#17 RAYMOND 36N-29HZ (248' FNL & 1536' FEL, SEC.29)
Area	COLORADO	Well	RAYMOND 36N-29HZ
Field	WELD COUNTY (KERR MCGEE)	Wellbore	RAYMOND 36N-29HZ AWB
Facility	SEC.29-T3N-R66W		

WELLPATH DATA (153 stations)

MD [ft]	Inclination [°]	Azimuth [°]	TVD [ft]	Vert Sect [ft]	North [ft]	East [ft]	Latitude	Longitude	DLS [°/100ft]	Comments
3884.00	15.680	278.390	3805.97	78.65	88.93	-629.99	40°12'09.573"N	104°47'57.643"W	0.63	
3970.00	16.570	281.040	3888.59	80.89	92.98	-653.53	40°12'09.613"N	104°47'57.947"W	1.34	
4055.00	16.700	280.790	3970.03	82.68	97.58	-677.42	40°12'09.658"N	104°47'58.254"W	0.17	
4140.00	17.780	281.540	4051.21	84.42	102.47	-702.13	40°12'09.706"N	104°47'58.573"W	1.30	
4226.00	17.930	280.040	4133.07	86.42	107.40	-728.03	40°12'09.755"N	104°47'58.907"W	0.56	
4311.00	16.540	278.480	4214.25	88.99	111.47	-752.88	40°12'09.795"N	104°47'59.227"W	1.72	
4396.00	15.120	276.490	4296.02	92.06	114.50	-775.87	40°12'09.825"N	104°47'59.523"W	1.79	
4481.00	14.410	276.940	4378.22	95.23	117.03	-797.38	40°12'09.850"N	104°47'59.801"W	0.85	
4567.00	14.580	279.810	4461.48	97.76	120.17	-818.67	40°12'09.881"N	104°48'00.075"W	0.86	
4652.00	14.330	279.910	4543.79	99.71	123.81	-839.57	40°12'09.917"N	104°48'00.344"W	0.30	
4737.00	14.340	280.800	4626.14	101.47	127.59	-860.28	40°12'09.955"N	104°48'00.611"W	0.26	
4823.00	14.570	280.930	4709.42	103.06	131.63	-881.36	40°12'09.995"N	104°48'00.883"W	0.27	
4908.00	13.660	281.790	4791.85	104.43	135.71	-901.68	40°12'10.035"N	104°48'01.145"W	1.10	
4993.00	14.000	280.810	4874.39	105.80	139.69	-921.61	40°12'10.074"N	104°48'01.402"W	0.49	
5078.00	13.770	279.350	4956.90	107.59	143.26	-941.69	40°12'10.110"N	104°48'01.660"W	0.49	
5164.00	14.580	278.720	5040.29	109.83	146.57	-962.48	40°12'10.142"N	104°48'01.928"W	0.96	
5249.00	14.250	278.570	5122.61	112.22	149.75	-983.40	40°12'10.174"N	104°48'02.198"W	0.39	
5334.00	14.450	278.660	5204.96	114.62	152.90	-1004.23	40°12'10.205"N	104°48'02.466"W	0.24	
5419.00	13.120	276.850	5287.51	117.20	155.65	-1024.30	40°12'10.232"N	104°48'02.725"W	1.64	
5504.00	13.290	275.520	5370.26	120.23	157.74	-1043.60	40°12'10.253"N	104°48'02.974"W	0.41	
5590.00	13.970	277.210	5453.84	123.31	160.00	-1063.74	40°12'10.275"N	104°48'03.233"W	0.92	
5675.00	12.150	275.440	5536.64	126.23	162.13	-1082.82	40°12'10.296"N	104°48'03.479"W	2.19	
5760.00	12.550	275.150	5619.67	129.34	163.81	-1100.93	40°12'10.313"N	104°48'03.713"W	0.48	
5846.00	11.750	275.660	5703.74	132.40	165.51	-1118.95	40°12'10.329"N	104°48'03.945"W	0.94	
5931.00	9.230	273.450	5787.32	135.21	166.78	-1134.37	40°12'10.342"N	104°48'04.144"W	3.00	
6016.00	8.860	274.760	5871.26	137.77	167.73	-1147.69	40°12'10.351"N	104°48'04.315"W	0.50	
6101.00	6.410	273.320	5955.50	139.92	168.55	-1158.96	40°12'10.359"N	104°48'04.460"W	2.89	
6187.00	4.430	273.490	6041.11	141.57	169.03	-1167.06	40°12'10.364"N	104°48'04.565"W	2.30	
6272.00	3.030	277.040	6125.93	142.55	169.50	-1172.57	40°12'10.369"N	104°48'04.636"W	1.67	
6357.00	2.180	281.790	6210.84	142.96	170.11	-1176.38	40°12'10.375"N	104°48'04.685"W	1.03	
6442.00	1.570	287.070	6295.79	143.02	170.78	-1179.08	40°12'10.381"N	104°48'04.720"W	0.75	
6528.00	1.280	293.170	6381.77	142.84	171.50	-1181.09	40°12'10.389"N	104°48'04.746"W	0.38	
6613.00	1.000	282.730	6466.75	142.74	172.04	-1182.68	40°12'10.394"N	104°48'04.766"W	0.41	
6666.00	1.030	294.610	6519.74	142.68	172.34	-1183.57	40°12'10.397"N	104°48'04.778"W	0.40	
6698.00	1.100	281.720	6551.74	142.65	172.52	-1184.13	40°12'10.399"N	104°48'04.785"W	0.78	
6741.00	2.510	185.670	6594.72	143.61	171.67	-1184.63	40°12'10.390"N	104°48'04.791"W	6.62	
6784.00	6.900	178.040	6637.57	147.00	168.15	-1184.63	40°12'10.355"N	104°48'04.791"W	10.29	
6826.00	11.280	175.280	6679.03	153.28	161.53	-1184.21	40°12'10.290"N	104°48'04.786"W	10.48	
6869.00	15.590	171.270	6720.84	162.53	151.62	-1182.98	40°12'10.192"N	104°48'04.770"W	10.25	
6912.00	19.530	172.630	6761.83	174.46	138.78	-1181.18	40°12'10.065"N	104°48'04.747"W	9.21	
6954.00	23.220	176.910	6800.94	188.81	123.54	-1179.84	40°12'09.915"N	104°48'04.730"W	9.53	
6997.00	26.720	179.030	6839.91	206.16	105.41	-1179.22	40°12'09.735"N	104°48'04.722"W	8.40	
7040.00	30.780	179.890	6877.60	226.07	84.73	-1179.03	40°12'09.531"N	104°48'04.719"W	9.49	
7082.00	35.080	179.760	6912.85	248.08	61.90	-1178.96	40°12'09.305"N	104°48'04.718"W	10.24	
7125.00	39.720	179.970	6947.00	273.27	35.79	-1178.90	40°12'09.047"N	104°48'04.717"W	10.79	

REFERENCE WELLPATH IDENTIFICATION

Operator	KERR-MCGEE OIL & GAS ONSHORE LP	Slot	SLOT#17 RAYMOND 36N-29HZ (248' FNL & 1536' FEL, SEC.29)
Area	COLORADO	Well	RAYMOND 36N-29HZ
Field	WELD COUNTY (KERR MCGEE)	Wellbore	RAYMOND 36N-29HZ AWB
Facility	SEC.29-T3N-R66W		

WELLPATH DATA (153 stations) † = interpolated/extrapolated station

MD [ft]	Inclination [°]	Azimuth [°]	TVD [ft]	Vert Sect [ft]	North [ft]	East [ft]	Latitude	Longitude	DLS [°/100ft]	Comments
7168.00	44.060	179.420	6979.00	300.94	7.09	-1178.74	40°12'08.764"N	104°48'04.715"W	10.13	
7210.00	48.780	180.100	7007.95	330.27	-23.33	-1178.62	40°12'08.463"N	104°48'04.714"W	11.30	
7253.00	53.160	180.610	7035.02	362.56	-56.72	-1178.83	40°12'08.133"N	104°48'04.717"W	10.23	
7295.00	57.640	181.080	7058.86	396.05	-91.28	-1179.35	40°12'07.792"N	104°48'04.723"W	10.71	
7338.00	62.100	181.250	7080.44	432.13	-128.45	-1180.10	40°12'07.424"N	104°48'04.733"W	10.38	
7381.00	66.030	181.290	7099.24	469.67	-167.10	-1180.96	40°12'07.042"N	104°48'04.744"W	9.14	
7424.00	69.320	180.680	7115.58	508.23	-206.87	-1181.64	40°12'06.649"N	104°48'04.753"W	7.76	
7466.00	71.580	180.070	7129.63	546.50	-246.44	-1181.90	40°12'06.258"N	104°48'04.756"W	5.55	
7509.00	73.630	179.780	7142.48	586.10	-287.48	-1181.85	40°12'05.853"N	104°48'04.755"W	4.81	
7552.00	75.910	180.010	7153.78	626.12	-328.96	-1181.77	40°12'05.443"N	104°48'04.754"W	5.33	
7594.00	80.120	180.290	7162.50	665.80	-370.04	-1181.88	40°12'05.037"N	104°48'04.756"W	10.04	
7614.00	81.650	180.120	7165.67	684.88	-389.78	-1181.95	40°12'04.842"N	104°48'04.756"W	7.70	
7643.00†	83.648	179.714	7169.38	712.63	-418.54	-1181.91	40°12'04.558"N	104°48'04.756"W	7.03	7" CASING POINT
7688.00	86.750	179.090	7173.14	755.79	-463.38	-1181.44	40°12'04.115"N	104°48'04.750"W	7.03	
7730.00	86.750	178.830	7175.52	796.06	-505.30	-1180.68	40°12'03.700"N	104°48'04.740"W	0.62	
7816.00	90.990	179.850	7177.22	878.78	-591.26	-1179.69	40°12'02.851"N	104°48'04.727"W	5.07	
7901.00	91.080	179.940	7175.68	960.78	-676.25	-1179.53	40°12'02.011"N	104°48'04.725"W	0.15	
7986.00	89.570	180.490	7175.20	1042.91	-761.24	-1179.85	40°12'01.171"N	104°48'04.729"W	1.89	
8071.00	90.280	179.190	7175.31	1124.89	-846.24	-1179.61	40°12'00.331"N	104°48'04.726"W	1.74	
8157.00	89.160	181.140	7175.73	1207.97	-932.23	-1179.86	40°11'59.481"N	104°48'04.729"W	2.61	
8242.00	88.710	180.620	7177.31	1290.33	-1017.21	-1181.17	40°11'58.642"N	104°48'04.746"W	0.81	
8327.00	88.740	181.110	7179.20	1372.69	-1102.18	-1182.45	40°11'57.802"N	104°48'04.762"W	0.58	
8412.00	88.330	181.370	7181.38	1455.18	-1187.13	-1184.29	40°11'56.963"N	104°48'04.786"W	0.57	
8498.00	87.720	181.240	7184.34	1538.63	-1273.05	-1186.25	40°11'56.113"N	104°48'04.811"W	0.73	
8583.00	89.110	180.880	7186.69	1621.05	-1358.00	-1187.82	40°11'55.274"N	104°48'04.831"W	1.69	
8668.00	89.850	181.630	7187.46	1703.56	-1442.98	-1189.68	40°11'54.434"N	104°48'04.855"W	1.24	
8753.00	89.510	181.210	7187.94	1786.13	-1527.95	-1191.79	40°11'53.595"N	104°48'04.883"W	0.64	
8839.00	91.170	181.650	7187.43	1869.68	-1613.92	-1193.93	40°11'52.745"N	104°48'04.910"W	2.00	
8924.00	91.600	181.470	7185.37	1952.28	-1698.86	-1196.25	40°11'51.906"N	104°48'04.940"W	0.55	
9009.00	91.910	181.260	7182.77	2034.80	-1783.80	-1198.27	40°11'51.066"N	104°48'04.966"W	0.44	
9095.00	89.850	180.980	7181.45	2118.22	-1869.77	-1199.95	40°11'50.217"N	104°48'04.988"W	2.42	
9181.00	88.280	180.660	7182.85	2201.54	-1955.75	-1201.18	40°11'49.367"N	104°48'05.003"W	1.86	
9266.00	88.120	180.270	7185.52	2283.73	-2040.70	-1201.87	40°11'48.528"N	104°48'05.012"W	0.50	
9351.00	87.840	180.090	7188.52	2365.80	-2125.65	-1202.14	40°11'47.688"N	104°48'05.016"W	0.39	
9437.00	88.140	179.890	7191.54	2448.76	-2211.59	-1202.12	40°11'46.839"N	104°48'05.015"W	0.42	
9522.00	89.110	179.790	7193.58	2530.72	-2296.57	-1201.88	40°11'45.999"N	104°48'05.012"W	1.15	
9607.00	88.890	179.570	7195.06	2612.64	-2381.55	-1201.41	40°11'45.159"N	104°48'05.006"W	0.37	
9692.00	88.430	179.770	7197.05	2694.54	-2466.53	-1200.92	40°11'44.320"N	104°48'05.000"W	0.59	
9778.00	89.010	179.540	7198.97	2777.39	-2552.51	-1200.40	40°11'43.470"N	104°48'04.993"W	0.73	
9863.00	89.290	180.560	7200.23	2859.46	-2637.50	-1200.48	40°11'42.630"N	104°48'04.994"W	1.24	
9948.00	88.490	180.700	7201.88	2941.73	-2722.47	-1201.41	40°11'41.790"N	104°48'05.006"W	0.96	
10033.00	89.850	180.300	7203.11	3023.96	-2807.46	-1202.15	40°11'40.950"N	104°48'05.015"W	1.67	
10119.00	89.570	181.370	7203.54	3107.29	-2893.45	-1203.41	40°11'40.101"N	104°48'05.031"W	1.29	
10204.00	89.080	181.590	7204.54	3189.88	-2978.41	-1205.60	40°11'39.261"N	104°48'05.060"W	0.63	
10289.00	88.610	180.970	7206.26	3272.39	-3063.37	-1207.50	40°11'38.422"N	104°48'05.084"W	0.92	



Actual Wellpath Report

RAYMOND 36N-29HZ AWP

Page 5 of 7



REFERENCE WELLPATH IDENTIFICATION

Operator	KERR-MCGEE OIL & GAS ONSHORE LP	Slot	SLOT#17 RAYMOND 36N-29HZ (248' FNL & 1536' FEL, SEC.29)
Area	COLORADO	Well	RAYMOND 36N-29HZ
Field	WELD COUNTY (KERR MCGEE)	Wellbore	RAYMOND 36N-29HZ AWB
Facility	SEC.29-T3N-R66W		

WELLPATH DATA (153 stations)

MD [ft]	Inclination [°]	Azimuth [°]	TVD [ft]	Vert Sect [ft]	North [ft]	East [ft]	Latitude	Longitude	DLS [°/100ft]	Comments
10375.00	90.060	181.080	7207.25	3355.79	-3149.35	-1209.04	40°11'37.572"N	104°48'05.104"W	1.69	
10460.00	90.090	181.200	7207.14	3438.27	-3234.33	-1210.73	40°11'36.732"N	104°48'05.126"W	0.15	
10545.00	90.220	181.250	7206.91	3520.77	-3319.32	-1212.55	40°11'35.892"N	104°48'05.149"W	0.16	
10631.00	89.600	180.810	7207.05	3604.18	-3405.30	-1214.09	40°11'35.043"N	104°48'05.169"W	0.88	
10716.00	89.450	181.170	7207.75	3686.60	-3490.28	-1215.56	40°11'34.203"N	104°48'05.188"W	0.46	
10801.00	89.570	181.170	7208.48	3769.08	-3575.26	-1217.30	40°11'33.363"N	104°48'05.210"W	0.14	
10887.00	89.470	181.330	7209.20	3852.57	-3661.24	-1219.17	40°11'32.513"N	104°48'05.234"W	0.22	
10972.00	89.320	181.980	7210.10	3935.22	-3746.20	-1221.63	40°11'31.674"N	104°48'05.266"W	0.78	
11057.00	89.410	181.560	7211.04	4017.91	-3831.15	-1224.25	40°11'30.834"N	104°48'05.299"W	0.51	
11142.00	89.040	180.990	7212.19	4100.43	-3916.12	-1226.14	40°11'29.995"N	104°48'05.324"W	0.80	
11228.00	90.220	180.390	7212.75	4183.71	-4002.11	-1227.18	40°11'29.145"N	104°48'05.337"W	1.54	
11313.00	89.600	181.080	7212.88	4266.03	-4087.11	-1228.27	40°11'28.305"N	104°48'05.351"W	1.09	
11398.00	91.200	180.930	7212.29	4348.46	-4172.09	-1229.76	40°11'27.465"N	104°48'05.370"W	1.89	
11484.00	91.480	181.270	7210.27	4431.87	-4258.05	-1231.41	40°11'26.616"N	104°48'05.391"W	0.51	
11569.00	91.510	180.390	7208.06	4514.20	-4343.01	-1232.64	40°11'25.776"N	104°48'05.407"W	1.04	
11654.00	91.890	180.830	7205.53	4596.45	-4427.97	-1233.55	40°11'24.937"N	104°48'05.419"W	0.68	
11739.00	91.510	180.990	7203.01	4678.81	-4512.92	-1234.90	40°11'24.097"N	104°48'05.436"W	0.49	LAST BHI MWD+IFR SURVEY
11795.00	91.510	180.990	7201.54	4733.09	-4568.89	-1235.86	40°11'23.544"N	104°48'05.449"W	0.00	PROJECTION TO BIT

HOLE & CASING SECTIONS - Ref Wellbore: RAYMOND 36N-29HZ AWB Ref Wellpath: RAYMOND 36N-29HZ AWP

String/Diameter	Start MD [ft]	End MD [ft]	Interval [ft]	Start TVD [ft]	End TVD [ft]	Start N/S [ft]	Start E/W [ft]	End N/S [ft]	End E/W [ft]
12.25in Open Hole	17.00	941.00	924.00	17.00	940.99	0.00	0.00	-0.54	-2.82
9.625in Casing Surface	17.00	941.00	924.00	17.00	940.99	0.00	0.00	-0.54	-2.82
8.75in Open Hole	941.00	7660.00	6719.00	940.99	7171.08	-0.54	-2.82	-435.46	-1181.79
7in Casing Intermediate	17.00	7643.00	7626.00	17.00	7169.38	0.00	0.00	-418.54	-1181.91
6.125in Open Hole	7643.00	11795.00	4152.00	7169.38	7201.54	-418.54	-1181.91	-4568.89	-1235.86



Actual Wellpath Report

RAYMOND 36N-29HZ AWP

Page 6 of 7



REFERENCE WELLPATH IDENTIFICATION

Operator	KERR-MCGEE OIL & GAS ONSHORE LP	Slot	SLOT#17 RAYMOND 36N-29HZ (248' FNL & 1536' FEL, SEC.29)
Area	COLORADO	Well	RAYMOND 36N-29HZ
Field	WELD COUNTY (KERR MCGEE)	Wellbore	RAYMOND 36N-29HZ AWB
Facility	SEC.29-T3N-R66W		

TARGETS

Name	MD [ft]	TVD [ft]	North [ft]	East [ft]	Grid East [US ft]	Grid North [US ft]	Latitude	Longitude	Shape
RAYMOND 36N-29HZ, SEC.29 LINES		-1.00	0.00	0.00	3196336.22	1317360.37	40°12'08.694"N	104°47'49.524"W	polygon
MILLER L 29-24D 150' CIRCLE		7192.50	-3806.40	-1055.89	3195310.58	1313545.89	40°11'31.079"N	104°48'03.130"W	circle
RAYMOND 36N-29HZ BHL (460'FSL & 2590'FWL, SEC.29) REV-2		7198.00	-4596.72	-1193.00	3195179.74	1312754.54	40°11'23.269"N	104°48'04.896"W	point
RAYMOND 36N-29HZ BHL ON PLAT (460'FSL & 2640'FWL, SEC.29) REV-1		7198.00	-4596.72	-1143.00	3195229.74	1312754.94	40°11'23.269"N	104°48'04.252"W	point
RAYMOND 36N-29HZ LAND BOX		7200.00	0.00	0.00	3196336.22	1317360.37	40°12'08.694"N	104°47'49.524"W	polygon
RAYMOND 36N-29HZ BHL (460'FSL & 2570'FWL, SEC.29) REV-3		7221.00	-4596.72	-1213.00	3195159.74	1312754.38	40°11'23.269"N	104°48'05.154"W	point
RAYMOND 36N-29HZ SEC.29 HARDLINES (460' SETBACKS)		7999.00	0.00	0.00	3196336.22	1317360.37	40°12'08.694"N	104°47'49.524"W	polygon

WELLPATH COMPOSITION - Ref Wellbore: RAYMOND 36N-29HZ AWB Ref Wellpath: RAYMOND 36N-29HZ AWP

Start MD [ft]	End MD [ft]	Positional Uncertainty Model	Log Name/Comment	Wellbore
17.00	872.00	Generic gyro - continuous (Standard)	GYRODATA SURVEYS <117-872>	RAYMOND 36N-29HZ AWB
872.00	7614.00	NaviTrak (MAGCORR,IFR)	BHI MWD+IFR SURVEYS 8 3/4" HOLE <988-7614>	RAYMOND 36N-29HZ AWB
7614.00	11739.00	NaviTrak (MAGCORR,IFR)	BHI MWD+IFR SURVEYS 6 1/8" HOLE <7688-11739>	RAYMOND 36N-29HZ AWB
11739.00	11795.00	Blind Drilling (std)	Projection to bit	RAYMOND 36N-29HZ AWB



Actual Wellpath Report

RAYMOND 36N-29HZ AWP

Page 7 of 7



REFERENCE WELLPATH IDENTIFICATION

Operator	KERR-MCGEE OIL & GAS ONSHORE LP	Slot	SLOT#17 RAYMOND 36N-29HZ (248' FNL & 1536' FEL, SEC.29)
Area	COLORADO	Well	RAYMOND 36N-29HZ
Field	WELD COUNTY (KERR MCGEE)	Wellbore	RAYMOND 36N-29HZ AWB
Facility	SEC.29-T3N-R66W		

WELLPATH COMMENTS

MD [ft]	Inclination [°]	Azimuth [°]	TVD [ft]	Comment
17.00	0.000	100.530	17.00	TIE-ON
117.00	0.230	100.530	117.00	BEGIN GYRO SURVEYS
872.00	0.350	254.130	871.99	TIE-INTO GYRO SURVEYS
988.00	0.140	273.640	987.99	BEGIN BHI MWD+IFR SURVEYS
7643.00	83.648	179.714	7169.38	7" CASING POINT
11739.00	91.510	180.990	7203.01	LAST BHI MWD+IFR SURVEY
11795.00	91.510	180.990	7201.54	PROJECTION TO BIT