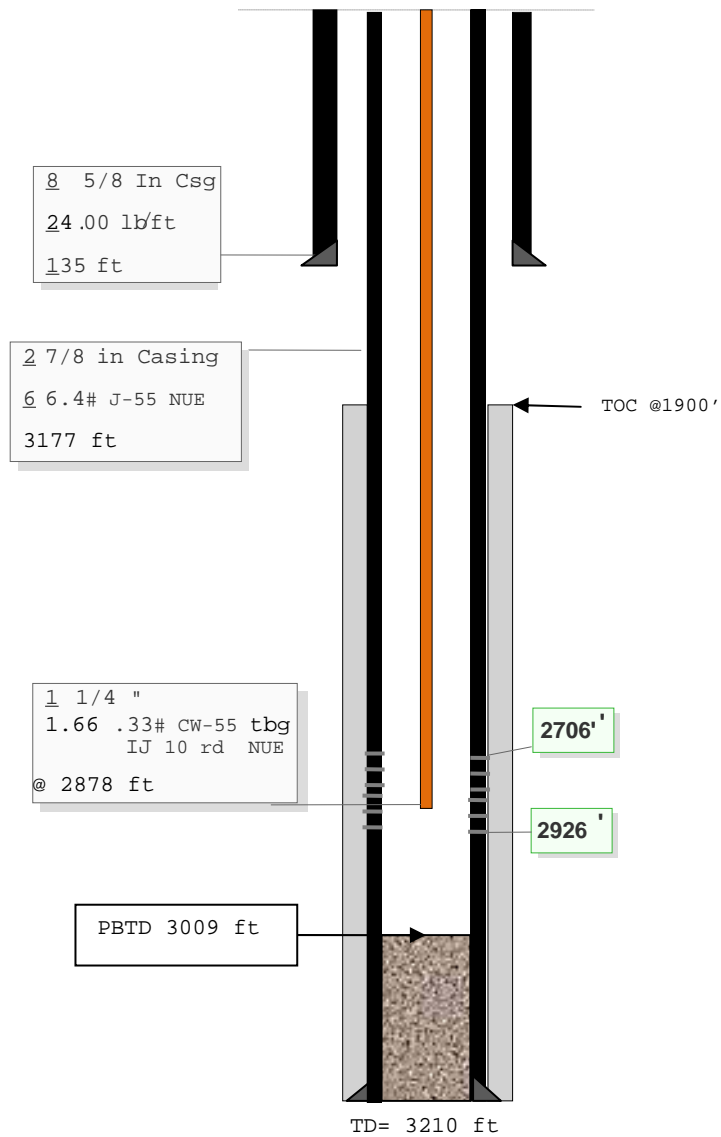


ROBERT L. BAYLESS PRODUCER LLC.

Philadelphia Creek # 29
SEC 14, T2S, R101W
Rio Blanco County, Colorado



2 7/8" casing capacity: 0.0058 bbl/ft.
1 1/4" tubing capacity: 0.0018 bbl/ft.
2 7/8" - 1 1/4" annular capacity: 0.0031 bbl/ft.