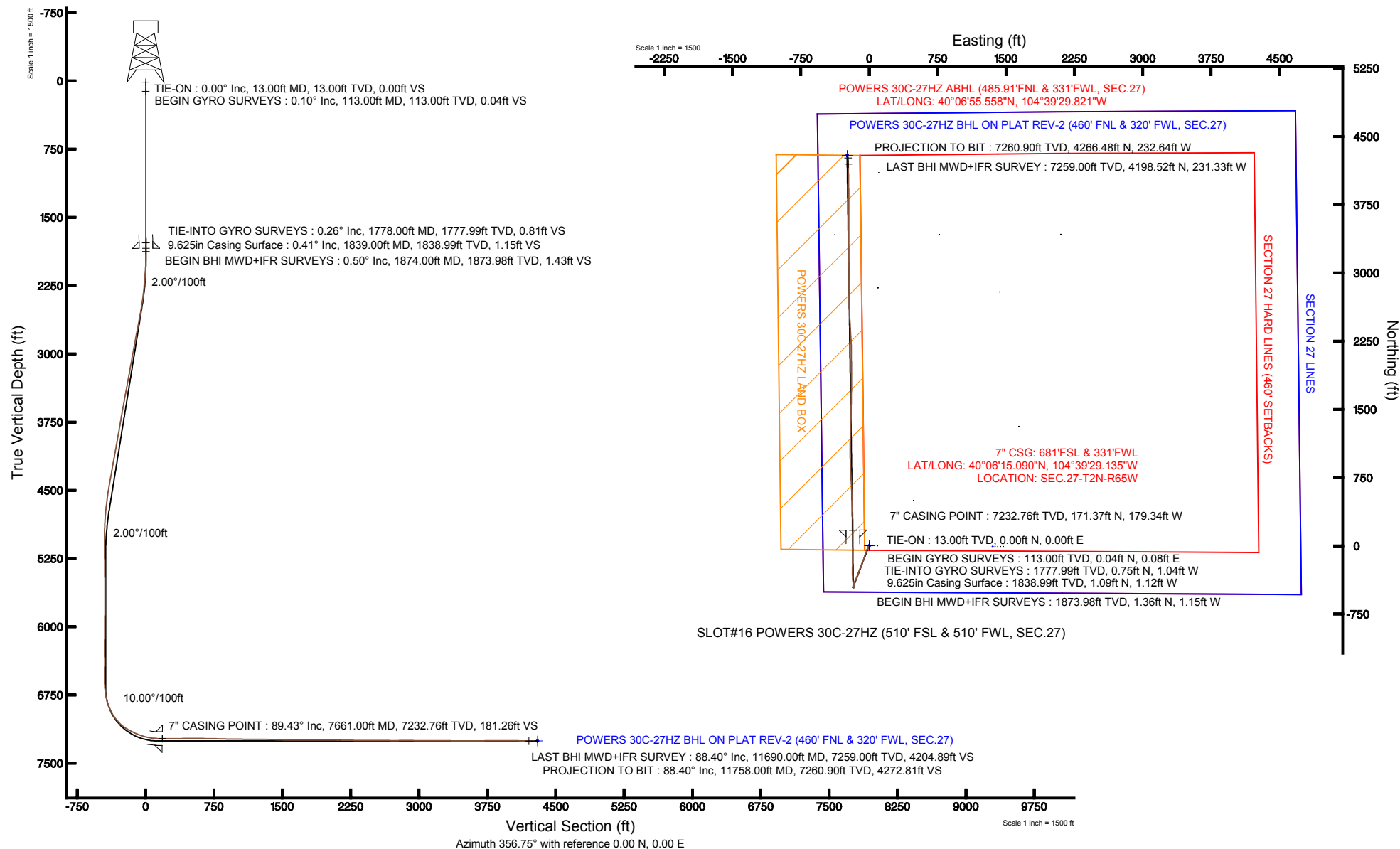


KERR-MCGEE OIL & GAS ONSHORE LP

Location: COLORADO Slot: SLOT#16 POWERS 30C-27HZ (510' FSL & 510' FWL, SEC.27)
 Field: WELD COUNTY (KERR MCGEE) Well: POWERS 30C-27HZ
 Facility: SEC.27-T2N-R65W Wellbore: POWERS 30C-27HZ PWB

Plot reference wellpath is POWERS 30C-27HZ (REV-C.0) PWP

True vertical depths are referenced to ENSIGN 138 (RKB)	Grid System: NAD83 / Lambert Colorado SP, Northern Zone (501), US feet
Measured depths are referenced to ENSIGN 138 (RKB)	North Reference: True north
ENSGN 138 (RKB) to Mean Sea Level: 4947 feet	Scale: True distance
Mean Sea Level to Mud line (At Slot: SLOT#16 POWERS 30C-27HZ (510' FSL & 510' FWL, SEC.27)): 0 feet	Depths are in feet
Coordinates are in feet referenced to Slot	Created by: wilsjeff2 on 3/6/2013





Actual Wellpath Report

POWERS 30C-27HZ AWP

Page 1 of 6



REFERENCE WELLPATH IDENTIFICATION

Operator	KERR-MCGEE OIL & GAS ONSHORE LP	Slot	SLOT#16 POWERS 30C-27HZ (510' FSL & 510' FWL, SEC.27)
Area	COLORADO	Well	POWERS 30C-27HZ
Field	WELD COUNTY (KERR MCGEE)	Wellbore	POWERS 30C-27HZ AWB
Facility	SEC.27-T2N-R65W		

REPORT SETUP INFORMATION

Projection System	NAD83 / Lambert Colorado SP, Northern Zone (501), US feet	Software System	WellArchitect® 3.0.2
North Reference	True	User	Wilsjef02
Scale	0.99996	Report Generated	3/6/2013 at 07:51:17
Convergence at slot	0.54° East	Database/Source file	WellArchitectDB/POWERS_30C-27HZ_AWB.xml

WELLPATH LOCATION

	Local coordinates		Grid coordinates		Geographic coordinates	
	North[ft]	East[ft]	Easting[US ft]	Northing[US ft]	Latitude	Longitude
Slot Location	8.13	-1350.13	3235680.32	1281749.60	40°06'13.396"N	104°39'26.827"W
Facility Reference Pt			3237030.41	1281754.37	40°06'13.316"N	104°39'09.452"W
Field Reference Pt			3197771.84	1268891.29	40°04'09.600"N	104°47'36.000"W

WELLPATH DATUM

Calculation method	Minimum curvature	ENSIGN 138 (RKB) to Facility Vertical Datum	4947.00ft
Horizontal Reference Pt	Slot	ENSIGN 138 (RKB) to Mean Sea Level	4947.00ft
Vertical Reference Pt	ENSIGN 138 (RKB)	ENSIGN 138 (RKB) to Mud Line at Slot (SLOT#16 POWERS 30C-27HZ (510' FSL & 510' FWL, SEC.27))	4947.00ft
MD Reference Pt	ENSIGN 138 (RKB)	Section Origin	N 0.00, E 0.00 ft
Field Vertical Reference	Mean Sea Level	Section Azimuth	356.75°



Actual Wellpath Report

POWERS 30C-27HZ AWP

Page 2 of 6



REFERENCE WELLPATH IDENTIFICATION

Operator	KERR-MCGEE OIL & GAS ONSHORE LP	Slot	SLOT#16 POWERS 30C-27HZ (510' FSL & 510' FWL, SEC.27)
Area	COLORADO	Well	POWERS 30C-27HZ
Field	WELD COUNTY (KERR MCGEE)	Wellbore	POWERS 30C-27HZ AWB
Facility	SEC.27-T2N-R65W		

WELLPATH DATA (130 stations) † = interpolated/extrapolated station

MD [ft]	Inclination [°]	Azimuth [°]	TVD [ft]	Vert Sect [ft]	North [ft]	East [ft]	Latitude	Longitude	DLS [°/100ft]	Comments
0.00†	0.000	62.270	0.00	0.00	0.00	0.00	40°06'13.396"N	104°39'26.827"W	0.00	
13.00	0.000	62.270	13.00	0.00	0.00	0.00	40°06'13.396"N	104°39'26.827"W	0.00	TIE-ON
113.00	0.100	62.270	113.00	0.04	0.04	0.08	40°06'13.396"N	104°39'26.826"W	0.10	BEGIN GYRO SURVEYS
213.00	0.350	173.040	213.00	-0.23	-0.22	0.19	40°06'13.394"N	104°39'26.825"W	0.40	
313.00	0.150	277.630	313.00	-0.51	-0.51	0.10	40°06'13.391"N	104°39'26.826"W	0.41	
413.00	0.270	130.170	413.00	-0.65	-0.64	0.15	40°06'13.390"N	104°39'26.825"W	0.40	
513.00	0.370	195.880	513.00	-1.12	-1.10	0.24	40°06'13.385"N	104°39'26.824"W	0.36	
613.00	0.180	98.220	613.00	-1.45	-1.44	0.31	40°06'13.382"N	104°39'26.823"W	0.43	
713.00	0.190	232.510	713.00	-1.58	-1.56	0.33	40°06'13.381"N	104°39'26.823"W	0.34	
813.00	0.110	98.940	813.00	-1.69	-1.68	0.30	40°06'13.379"N	104°39'26.823"W	0.28	
913.00	0.210	289.760	913.00	-1.64	-1.63	0.22	40°06'13.380"N	104°39'26.824"W	0.32	
1013.00	0.220	129.470	1013.00	-1.70	-1.69	0.19	40°06'13.379"N	104°39'26.825"W	0.42	
1113.00	0.370	305.980	1112.99	-1.62	-1.62	0.08	40°06'13.380"N	104°39'26.826"W	0.59	
1213.00	0.160	154.820	1212.99	-1.55	-1.56	-0.12	40°06'13.381"N	104°39'26.829"W	0.52	
1313.00	0.410	319.980	1312.99	-1.39	-1.41	-0.29	40°06'13.382"N	104°39'26.831"W	0.57	
1413.00	0.180	67.490	1412.99	-1.05	-1.08	-0.38	40°06'13.385"N	104°39'26.832"W	0.49	
1513.00	0.520	321.690	1512.99	-0.63	-0.66	-0.51	40°06'13.389"N	104°39'26.834"W	0.59	
1613.00	0.220	36.460	1612.99	-0.11	-0.15	-0.68	40°06'13.395"N	104°39'26.836"W	0.51	
1713.00	0.510	326.190	1712.99	0.42	0.37	-0.81	40°06'13.400"N	104°39'26.837"W	0.48	
1778.00	0.260	335.590	1777.99	0.81	0.75	-1.04	40°06'13.403"N	104°39'26.840"W	0.40	TIE-INTO GYRO SURVEYS
1874.00	0.500	357.200	1873.98	1.43	1.36	-1.15	40°06'13.409"N	104°39'26.842"W	0.29	BEGIN BHI MWD+IFR SURVEYS
1969.00	1.500	193.500	1968.98	0.65	0.57	-1.46	40°06'13.402"N	104°39'26.846"W	2.09	
2063.00	3.500	205.300	2062.88	-3.05	-3.22	-2.97	40°06'13.364"N	104°39'26.865"W	2.19	
2159.00	5.200	212.000	2158.60	-9.17	-9.56	-6.53	40°06'13.302"N	104°39'26.911"W	1.85	
2253.00	6.600	211.500	2252.10	-17.09	-17.78	-11.61	40°06'13.220"N	104°39'26.976"W	1.49	
2348.00	8.000	208.200	2346.33	-27.22	-28.26	-17.59	40°06'13.117"N	104°39'27.053"W	1.54	
2442.00	10.000	201.700	2439.17	-40.20	-41.61	-23.70	40°06'12.985"N	104°39'27.132"W	2.38	
2539.00	10.900	201.200	2534.56	-56.19	-57.99	-30.13	40°06'12.823"N	104°39'27.215"W	0.93	
2635.00	11.500	200.000	2628.73	-73.24	-75.44	-36.68	40°06'12.650"N	104°39'27.299"W	0.67	
2729.00	12.100	199.300	2720.75	-90.95	-93.54	-43.14	40°06'12.472"N	104°39'27.382"W	0.66	
2822.00	10.800	196.200	2811.89	-108.17	-111.11	-48.80	40°06'12.298"N	104°39'27.455"W	1.55	
2917.00	11.300	197.700	2905.13	-125.25	-128.53	-54.11	40°06'12.126"N	104°39'27.523"W	0.61	
3013.00	11.300	201.500	2999.27	-142.58	-146.24	-60.42	40°06'11.951"N	104°39'27.604"W	0.78	
3107.00	11.100	200.100	3091.48	-159.25	-163.30	-66.90	40°06'11.782"N	104°39'27.688"W	0.36	
3202.00	11.300	202.200	3184.67	-176.05	-180.51	-73.56	40°06'11.612"N	104°39'27.774"W	0.48	
3297.00	11.400	202.800	3277.82	-192.89	-197.78	-80.71	40°06'11.441"N	104°39'27.866"W	0.16	
3390.00	11.500	201.500	3368.96	-209.57	-214.88	-87.67	40°06'11.273"N	104°39'27.955"W	0.30	
3486.00	11.400	201.400	3463.05	-226.88	-232.62	-94.64	40°06'11.097"N	104°39'28.045"W	0.11	
3581.00	11.300	198.300	3556.20	-244.07	-250.20	-100.99	40°06'10.924"N	104°39'28.127"W	0.65	
3677.00	10.800	200.600	3650.42	-261.05	-267.55	-107.11	40°06'10.752"N	104°39'28.205"W	0.69	
3774.00	10.400	200.300	3745.76	-277.38	-284.26	-113.34	40°06'10.587"N	104°39'28.286"W	0.42	
3868.00	10.700	198.600	3838.17	-293.26	-300.49	-119.07	40°06'10.426"N	104°39'28.359"W	0.46	
3962.00	11.100	201.300	3930.48	-309.59	-317.19	-125.14	40°06'10.261"N	104°39'28.437"W	0.69	
4056.00	11.600	205.200	4022.64	-326.13	-334.17	-132.45	40°06'10.094"N	104°39'28.532"W	0.97	
4151.00	11.100	206.000	4115.78	-342.51	-351.04	-140.53	40°06'09.927"N	104°39'28.635"W	0.55	



Actual Wellpath Report

POWERS 30C-27HZ AWP

Page 3 of 6



REFERENCE WELLPATH IDENTIFICATION

Operator	KERR-MCGEE OIL & GAS ONSHORE LP	Slot	SLOT#16 POWERS 30C-27HZ (510' FSL & 510' FWL, SEC.27)
Area	COLORADO	Well	POWERS 30C-27HZ
Field	WELD COUNTY (KERR MCGEE)	Wellbore	POWERS 30C-27HZ AWB
Facility	SEC.27-T2N-R65W		

WELLPATH DATA (130 stations) † = interpolated/extrapolated station

MD [ft]	Inclination [°]	Azimuth [°]	TVD [ft]	Vert Sect [ft]	North [ft]	East [ft]	Latitude	Longitude	DLS [°/100ft]	Comments
4246.00	12.100	204.300	4208.84	-359.32	-368.33	-148.63	40°06'09.756"N	104°39'28.740"W	1.11	
4342.00	11.000	204.600	4302.90	-376.34	-385.83	-156.59	40°06'09.583"N	104°39'28.842"W	1.15	
4438.00	10.700	200.100	4397.18	-392.62	-402.53	-163.46	40°06'09.418"N	104°39'28.931"W	0.94	
4533.00	10.300	200.800	4490.59	-408.47	-418.75	-169.51	40°06'09.258"N	104°39'29.008"W	0.44	
4627.00	8.400	197.000	4583.34	-422.59	-433.17	-174.50	40°06'09.115"N	104°39'29.073"W	2.12	
4722.00	6.700	197.300	4677.51	-434.29	-445.10	-178.18	40°06'08.997"N	104°39'29.120"W	1.79	
4818.00	5.100	192.200	4773.00	-443.64	-454.62	-180.75	40°06'08.903"N	104°39'29.153"W	1.75	
4913.00	2.700	193.800	4867.77	-449.85	-460.92	-182.17	40°06'08.841"N	104°39'29.171"W	2.53	
5008.00	0.600	191.100	4962.73	-452.48	-463.58	-182.80	40°06'08.815"N	104°39'29.179"W	2.21	
5102.00	0.700	201.700	5056.72	-453.47	-464.60	-183.11	40°06'08.805"N	104°39'29.183"W	0.17	
5198.00	1.000	3.800	5152.72	-453.17	-464.31	-183.27	40°06'08.808"N	104°39'29.185"W	1.75	
5387.00	0.900	31.000	5341.69	-450.31	-461.39	-182.40	40°06'08.836"N	104°39'29.174"W	0.24	
5579.00	0.800	67.100	5533.67	-448.61	-459.57	-180.39	40°06'08.854"N	104°39'29.148"W	0.28	
5770.00	0.800	89.800	5724.66	-448.23	-459.05	-177.82	40°06'08.860"N	104°39'29.115"W	0.16	
5959.00	1.300	115.200	5913.62	-449.33	-459.96	-174.56	40°06'08.851"N	104°39'29.073"W	0.36	
6151.00	1.200	114.200	6105.58	-451.29	-461.71	-170.76	40°06'08.833"N	104°39'29.024"W	0.05	
6341.00	0.700	60.900	6295.55	-451.70	-461.96	-167.93	40°06'08.831"N	104°39'28.988"W	0.51	
6531.00	0.700	113.300	6485.54	-451.71	-461.86	-165.85	40°06'08.832"N	104°39'28.961"W	0.33	
6616.00	0.400	189.100	6570.54	-452.24	-462.35	-165.42	40°06'08.827"N	104°39'28.956"W	0.84	
6665.00	0.500	325.800	6619.54	-452.22	-462.35	-165.57	40°06'08.827"N	104°39'28.958"W	1.71	
6713.00	4.800	347.600	6667.48	-450.06	-460.21	-166.12	40°06'08.848"N	104°39'28.965"W	9.04	
6760.00	7.100	345.600	6714.22	-445.26	-455.48	-167.26	40°06'08.895"N	104°39'28.979"W	4.91	
6810.00	11.100	345.200	6763.58	-437.51	-447.83	-169.26	40°06'08.971"N	104°39'29.005"W	8.00	
6857.00	15.400	349.700	6809.32	-426.88	-437.31	-171.53	40°06'09.074"N	104°39'29.034"W	9.40	
6906.00	18.800	347.100	6856.15	-412.64	-423.20	-174.46	40°06'09.214"N	104°39'29.072"W	7.11	
6953.00	23.100	350.200	6900.03	-396.00	-406.73	-177.72	40°06'09.377"N	104°39'29.114"W	9.44	
7001.00	28.400	353.500	6943.25	-375.24	-386.09	-180.62	40°06'09.581"N	104°39'29.151"W	11.43	
7048.00	33.300	356.300	6983.59	-351.16	-362.10	-182.72	40°06'09.818"N	104°39'29.178"W	10.86	
7096.00	38.900	358.100	7022.36	-322.89	-333.86	-184.07	40°06'10.097"N	104°39'29.196"W	11.87	
7143.00	44.300	359.500	7057.50	-291.72	-302.68	-184.70	40°06'10.405"N	104°39'29.204"W	11.66	
7190.00	50.500	0.300	7089.29	-257.20	-268.10	-184.75	40°06'10.747"N	104°39'29.205"W	13.25	
7237.00	57.000	1.200	7117.07	-219.41	-230.22	-184.24	40°06'11.121"N	104°39'29.198"W	13.92	
7285.00	61.500	1.500	7141.61	-178.30	-188.99	-183.27	40°06'11.528"N	104°39'29.185"W	9.39	
7332.00	64.800	0.700	7162.83	-136.49	-147.07	-182.47	40°06'11.943"N	104°39'29.175"W	7.18	
7382.00	68.700	0.000	7182.57	-90.65	-101.14	-182.19	40°06'12.397"N	104°39'29.172"W	7.91	
7429.00	71.300	0.600	7198.64	-46.58	-56.98	-181.96	40°06'12.833"N	104°39'29.169"W	5.66	
7478.00	75.000	0.800	7212.84	0.20	-10.10	-181.38	40°06'13.296"N	104°39'29.161"W	7.56	
7525.00	81.400	1.000	7222.45	46.06	35.88	-180.66	40°06'13.751"N	104°39'29.152"W	13.62	
7572.00	84.700	1.100	7228.13	92.58	82.52	-179.81	40°06'14.211"N	104°39'29.141"W	7.02	
7617.00	87.000	0.200	7231.39	137.35	127.40	-179.30	40°06'14.655"N	104°39'29.134"W	5.49	
7661.00†	89.428	359.694	7232.76	181.26	171.37	-179.34	40°06'15.090"N	104°39'29.135"W	5.64	7" CASING POINT
7704.00	91.800	359.200	7232.30	224.21	214.37	-179.75	40°06'15.514"N	104°39'29.140"W	5.64	
7799.00	89.600	358.000	7231.14	319.14	309.32	-182.07	40°06'16.453"N	104°39'29.170"W	2.64	
7894.00	90.800	357.800	7230.81	414.12	404.26	-185.56	40°06'17.391"N	104°39'29.215"W	1.28	
7990.00	91.400	357.500	7228.96	510.09	500.16	-189.49	40°06'18.339"N	104°39'29.266"W	0.70	



Actual Wellpath Report

POWERS 30C-27HZ AWP

Page 4 of 6



REFERENCE WELLPATH IDENTIFICATION

Operator	KERR-MCGEE OIL & GAS ONSHORE LP	Slot	SLOT#16 POWERS 30C-27HZ (510' FSL & 510' FWL, SEC.27)
Area	COLORADO	Well	POWERS 30C-27HZ
Field	WELD COUNTY (KERR MCGEE)	Wellbore	POWERS 30C-27HZ AWB
Facility	SEC.27-T2N-R65W		

WELLPATH DATA (130 stations)

MD [ft]	Inclination [°]	Azimuth [°]	TVD [ft]	Vert Sect [ft]	North [ft]	East [ft]	Latitude	Longitude	DLS [°/100ft]	Comments
8086.00	87.700	357.700	7229.72	606.06	596.05	-193.51	40°06'19.286"N	104°39'29.317"W	3.86	
8179.00	89.500	357.000	7231.99	699.02	688.92	-197.81	40°06'20.204"N	104°39'29.373"W	2.08	
8273.00	88.600	357.100	7233.55	793.01	782.78	-202.65	40°06'21.132"N	104°39'29.435"W	0.96	
8369.00	88.300	357.800	7236.15	888.97	878.65	-206.92	40°06'22.079"N	104°39'29.490"W	0.79	
8463.00	89.500	359.100	7237.95	982.90	972.60	-209.46	40°06'23.007"N	104°39'29.523"W	1.88	
8558.00	90.000	0.000	7238.36	1077.79	1067.59	-210.20	40°06'23.946"N	104°39'29.532"W	1.08	
8652.00	89.200	1.300	7239.02	1171.57	1161.58	-209.14	40°06'24.875"N	104°39'29.519"W	1.62	
8747.00	89.800	1.800	7239.85	1266.23	1256.54	-206.57	40°06'25.813"N	104°39'29.485"W	0.82	
8843.00	88.200	1.200	7241.53	1361.88	1352.49	-204.06	40°06'26.761"N	104°39'29.453"W	1.78	
8938.00	88.100	1.600	7244.59	1456.52	1447.41	-201.74	40°06'27.700"N	104°39'29.423"W	0.43	
9035.00	89.200	1.000	7246.88	1553.18	1544.36	-199.54	40°06'28.658"N	104°39'29.395"W	1.29	
9129.00	89.500	1.300	7247.94	1646.90	1638.33	-197.65	40°06'29.586"N	104°39'29.371"W	0.45	
9224.00	90.200	359.900	7248.19	1741.68	1733.33	-196.65	40°06'30.525"N	104°39'29.358"W	1.65	
9318.00	91.100	0.500	7247.13	1835.51	1827.32	-196.33	40°06'31.454"N	104°39'29.354"W	1.15	
9414.00	89.800	0.000	7246.37	1931.32	1923.31	-195.91	40°06'32.402"N	104°39'29.348"W	1.45	
9508.00	88.800	359.200	7247.52	2025.20	2017.30	-196.56	40°06'33.331"N	104°39'29.357"W	1.36	
9604.00	90.200	359.800	7248.36	2121.08	2113.29	-197.40	40°06'34.280"N	104°39'29.368"W	1.59	
9699.00	88.600	358.000	7249.35	2216.00	2208.26	-199.22	40°06'35.218"N	104°39'29.391"W	2.53	
9794.00	88.900	356.500	7251.43	2310.97	2303.12	-203.78	40°06'36.156"N	104°39'29.450"W	1.61	
9889.00	89.400	357.100	7252.84	2405.96	2397.97	-209.08	40°06'37.093"N	104°39'29.518"W	0.82	
9985.00	90.000	356.700	7253.34	2501.96	2493.82	-214.27	40°06'38.040"N	104°39'29.585"W	0.75	
10080.00	90.100	358.100	7253.26	2596.95	2588.72	-218.58	40°06'38.978"N	104°39'29.640"W	1.48	
10175.00	89.600	359.000	7253.50	2691.90	2683.69	-220.99	40°06'39.917"N	104°39'29.671"W	1.08	
10270.00	90.600	359.600	7253.34	2786.81	2778.68	-222.15	40°06'40.855"N	104°39'29.686"W	1.23	
10366.00	89.800	359.700	7253.00	2882.68	2874.68	-222.74	40°06'41.804"N	104°39'29.694"W	0.84	
10460.00	89.400	359.500	7253.66	2976.56	2968.67	-223.39	40°06'42.733"N	104°39'29.702"W	0.48	
10555.00	89.900	359.600	7254.24	3071.45	3063.67	-224.14	40°06'43.672"N	104°39'29.712"W	0.54	
10650.00	90.200	0.200	7254.16	3166.30	3158.67	-224.30	40°06'44.610"N	104°39'29.714"W	0.71	
10746.00	89.000	359.500	7254.83	3262.16	3254.66	-224.55	40°06'45.559"N	104°39'29.717"W	1.45	
10840.00	89.700	359.600	7255.89	3356.04	3348.65	-225.29	40°06'46.488"N	104°39'29.727"W	0.75	
10935.00	89.900	0.000	7256.22	3450.90	3443.65	-225.62	40°06'47.427"N	104°39'29.731"W	0.47	
11031.00	90.000	359.700	7256.31	3546.76	3539.65	-225.88	40°06'48.375"N	104°39'29.734"W	0.33	
11127.00	90.100	0.600	7256.22	3642.59	3635.65	-225.62	40°06'49.324"N	104°39'29.731"W	0.94	
11222.00	90.400	0.500	7255.81	3737.38	3730.65	-224.71	40°06'50.263"N	104°39'29.719"W	0.33	
11319.00	89.900	358.800	7255.56	3834.26	3827.64	-225.30	40°06'51.221"N	104°39'29.727"W	1.83	
11414.00	90.700	359.600	7255.06	3929.17	3922.63	-226.63	40°06'52.160"N	104°39'29.744"W	1.19	
11509.00	89.800	359.100	7254.64	4024.07	4017.62	-227.71	40°06'53.099"N	104°39'29.758"W	1.08	
11605.00	88.100	358.700	7256.40	4119.98	4113.58	-229.55	40°06'54.047"N	104°39'29.782"W	1.82	
11690.00	88.400	358.900	7259.00	4204.89	4198.52	-231.33	40°06'54.886"N	104°39'29.805"W	0.42	LAST BHI MWD+IFR SURVEY
11758.00	88.400	358.900	7260.90	4272.81	4266.48	-232.64	40°06'55.558"N	104°39'29.821"W	0.00	PROJECTION TO BIT



Actual Wellpath Report

POWERS 30C-27HZ AWP

Page 5 of 6



REFERENCE WELLPATH IDENTIFICATION

Operator	KERR-MCGEE OIL & GAS ONSHORE LP	Slot	SLOT#16 POWERS 30C-27HZ (510' FSL & 510' FWL, SEC.27)
Area	COLORADO	Well	POWERS 30C-27HZ
Field	WELD COUNTY (KERR MCGEE)	Wellbore	POWERS 30C-27HZ AWB
Facility	SEC.27-T2N-R65W		

HOLE & CASING SECTIONS - Ref Wellbore: POWERS 30C-27HZ AWB Ref Wellpath: POWERS 30C-27HZ AWP

String/Diameter	Start MD [ft]	End MD [ft]	Interval [ft]	Start TVD [ft]	End TVD [ft]	Start N/S [ft]	Start E/W [ft]	End N/S [ft]	End E/W [ft]
12.25in Open Hole	13.00	1839.00	1826.00	13.00	1838.99	0.00	0.00	1.09	-1.12
9.625in Casing Surface	13.00	1839.00	1826.00	13.00	1838.99	0.00	0.00	1.09	-1.12
8.75in Open Hole	1839.00	7670.00	5831.00	1838.99	7232.81	1.09	-1.12	180.37	-179.39
7in Casing Intermediate	13.00	7661.00	7648.00	13.00	7232.76	0.00	0.00	171.37	-179.34
6.125in Open Hole	7661.00	11758.00	4097.00	7232.76	7260.90	171.37	-179.34	4266.48	-232.64

TARGETS

Name	MD [ft]	TVD [ft]	North [ft]	East [ft]	Grid East [US ft]	Grid North [US ft]	Latitude	Longitude	Shape
SECTION 27 LINES		-19.00	-8.06	1349.98	3237030.25	1281754.37	40°06'13.316"N	104°39'09.454"W	polygon
POWERS 30C-27HZ BHL ON PLAT REV-1 (460' FNL & 320' FWL, SEC.27)		7254.00	4292.39	-243.64	3235395.92	1286039.31	40°06'55.814"N	104°39'29.963"W	point
POWERS 30C-27HZ LAND BOX		7254.00	0.00	0.00	3235680.32	1281749.60	40°06'13.396"N	104°39'26.827"W	polygon
SECTION 27 HARD LINES (460' SETBACKS)		7254.00	-8.06	1349.98	3237030.25	1281754.37	40°06'13.316"N	104°39'09.454"W	polygon
POWERS 30C-27HZ BHL ON PLAT REV-2 (460' FNL & 320' FWL, SEC.27)		7258.00	4292.39	-243.64	3235395.92	1286039.31	40°06'55.814"N	104°39'29.963"W	point

WELLPATH COMPOSITION - Ref Wellbore: POWERS 30C-27HZ AWB Ref Wellpath: POWERS 30C-27HZ AWP

Start MD [ft]	End MD [ft]	Positional Uncertainty Model	Log Name/Comment	Wellbore
13.00	1778.00	Generic gyro - continuous (Standard)	MS GYRO SURVEY <113-1778>	POWERS 30C-27HZ AWB
1778.00	7617.00	NaviTrak (MAGCORR,IFR)	BHI MWD+IFR SURVEYS 8 3/4" HOLE <1874-7617>	POWERS 30C-27HZ AWB
7617.00	11690.00	OnTrak (MAGCORR,IFR)	BHI MWD+IFR SURVEYS 6 1/8" HOLE <7704-11690>	POWERS 30C-27HZ AWB
11690.00	11758.00	Blind Drilling (std)	Projection to bit	POWERS 30C-27HZ AWB



Actual Wellpath Report

POWERS 30C-27HZ AWP

Page 6 of 6



REFERENCE WELLPATH IDENTIFICATION

Operator	KERR-MCGEE OIL & GAS ONSHORE LP	Slot	SLOT#16 POWERS 30C-27HZ (510' FSL & 510' FWL, SEC.27)
Area	COLORADO	Well	POWERS 30C-27HZ
Field	WELD COUNTY (KERR MCGEE)	Wellbore	POWERS 30C-27HZ AWB
Facility	SEC.27-T2N-R65W		

WELLPATH COMMENTS

MD [ft]	Inclination [°]	Azimuth [°]	TVD [ft]	Comment
13.00	0.000	62.270	13.00	TIE-ON
113.00	0.100	62.270	113.00	BEGIN GYRO SURVEYS
1778.00	0.260	335.590	1777.99	TIE-INTO GYRO SURVEYS
1874.00	0.500	357.200	1873.98	BEGIN BHI MWD+IFR SURVEYS
7661.00	89.428	359.694	7232.76	7" CASING POINT
11690.00	88.400	358.900	7259.00	LAST BHI MWD+IFR SURVEY
11758.00	88.400	358.900	7260.90	PROJECTION TO BIT