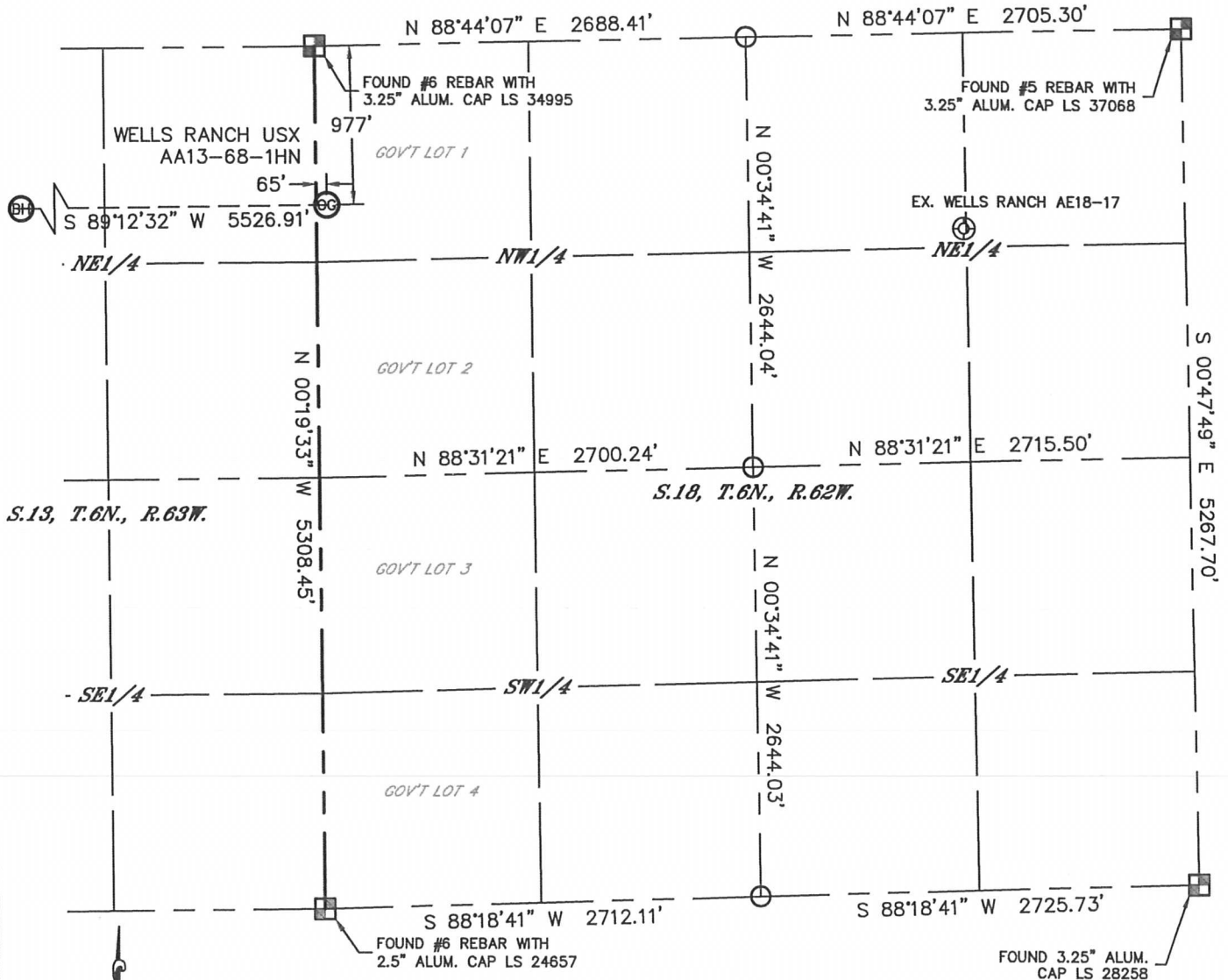


Lat40°, Inc. 1635 Foxtrail Drive, Suite 325 Loveland, CO 970-776-3321

WELL LOCATION CERTIFICATE

THIS MAP DOES NOT REPRESENT A BOUNDARY SURVEY

SECTION: 18
TOWNSHIP: 6N
RANGE: 62W



In accordance with a request from Brian James with Noble Energy Inc. Lat40°, Inc. has determined the surface location of the WELLS RANCH USX AA13-68-1HN to be 977' from the NORTH line and 65' from the WEST line as measured at right angles from the section lines of Section 18, Township 6 North, Range 62 West and the bottom hole to be 990' from the NORTH line and 205' from the EAST line as measured at right angles from the section lines of Section 14, Township 6 North, Range 63 West of the Sixth Principal Meridian, County of Weld, State of Colorado.

I hereby state that this Well Location Certificate was prepared by me, or under my direct supervision, that the fieldwork was completed on 6/26/2012, for and on behalf of Noble Energy Inc. That this is not a Land Survey Plat or an Improvement Survey Plat, and that it is not to be relied upon for establishment of fence, building, or other future improvement lines.

NOTE:

- 1) Bearings shown are Grid Bearings of the Colorado State Plane Coordinate System, North Zone, North American Datum 1983/2007. The lineal dimensions as contained herein are based upon the "U.S. Survey Foot."
- 2) Ground elevations are based on an observed GPS elevation (NAVD 1988 DATUM).
- 3) NEAREST EXISTING WELL: WELLS RANCH AE18-17, 3970'
- 4) IMPROVEMENTS: See LOCATION DRAWING for all visible improvements within 400' of disturbed area.
- 5) SURFACE USE: RANGELAND
- 6) INSTRUMENT OPERATOR: ADAM KELLY

NOTE

According to Colorado law, you must commence any legal action based upon any defect in this W.L.C. within three years after you discover such defect. In no event, may any action based upon any defect in this survey be commenced more than ten years after the date of the certificate shown hereon. (13-80-105 C.R.S.)

LEGEND

- = ALIQUOT MONUMENT AS DESCRIBED
- = CALCULATED POSITION

SURFACE LOCATION

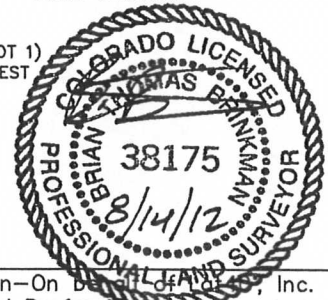
LAT: 40.49115°N
LONG: 104.37510°W
PDOP: 1.7
ELEV: 4851'
1/4, 1/4: NW1/4NW1/4 (GOV'T LOT 1)
NEAREST PROPERTY LINE: 65' WEST

BOTTOM HOLE

LAT: 40.49113°N
LONG: 104.39496°W

SHEET 1 OF 3

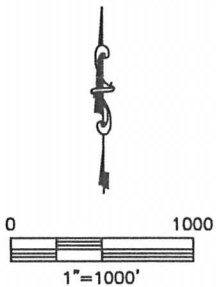
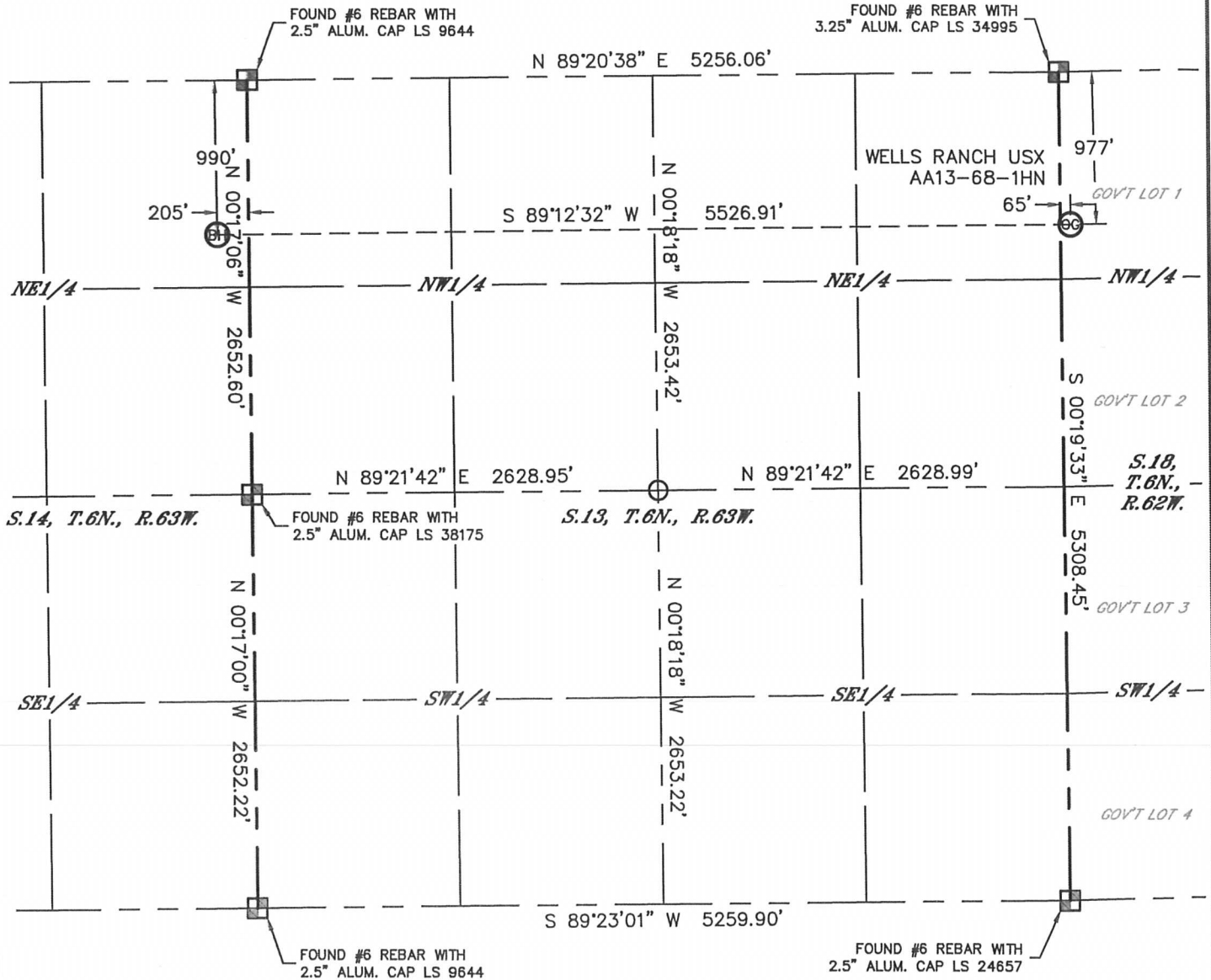
Brian T. Brinkman—On behalf of Lat40°, Inc.
Colorado Licensed Professional Land Surveyor No. 38175
DATE: 8/14/2012
PROJECT#: 2012094



WELL LOCATION CERTIFICATE

THIS MAP DOES NOT REPRESENT A BOUNDARY SURVEY



SECTION: 18
TOWNSHIP: 6N
RANGE: 62W



NOTE

According to Colorado law, you must commence any legal action based upon any defect in this W.L.C. within three years after you discover such defect. In no event, may any action based upon any defect in this survey be commenced more than ten years after the date of the certificate shown hereon. (13-80-105 C.R.S.)

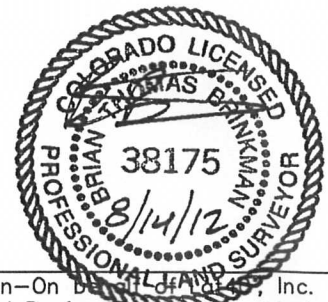
LEGEND

-  = ALIQUOT MONUMENT AS DESCRIBED
-  = CALCULATED POSITION

SHEET 2 OF 3

Brian T. Brinkman-On Demand Land Survey, Inc.
Colorado Licensed Professional Land Surveyor No. 38175

DATE: 8/14/2012
PROJECT#: 2012094

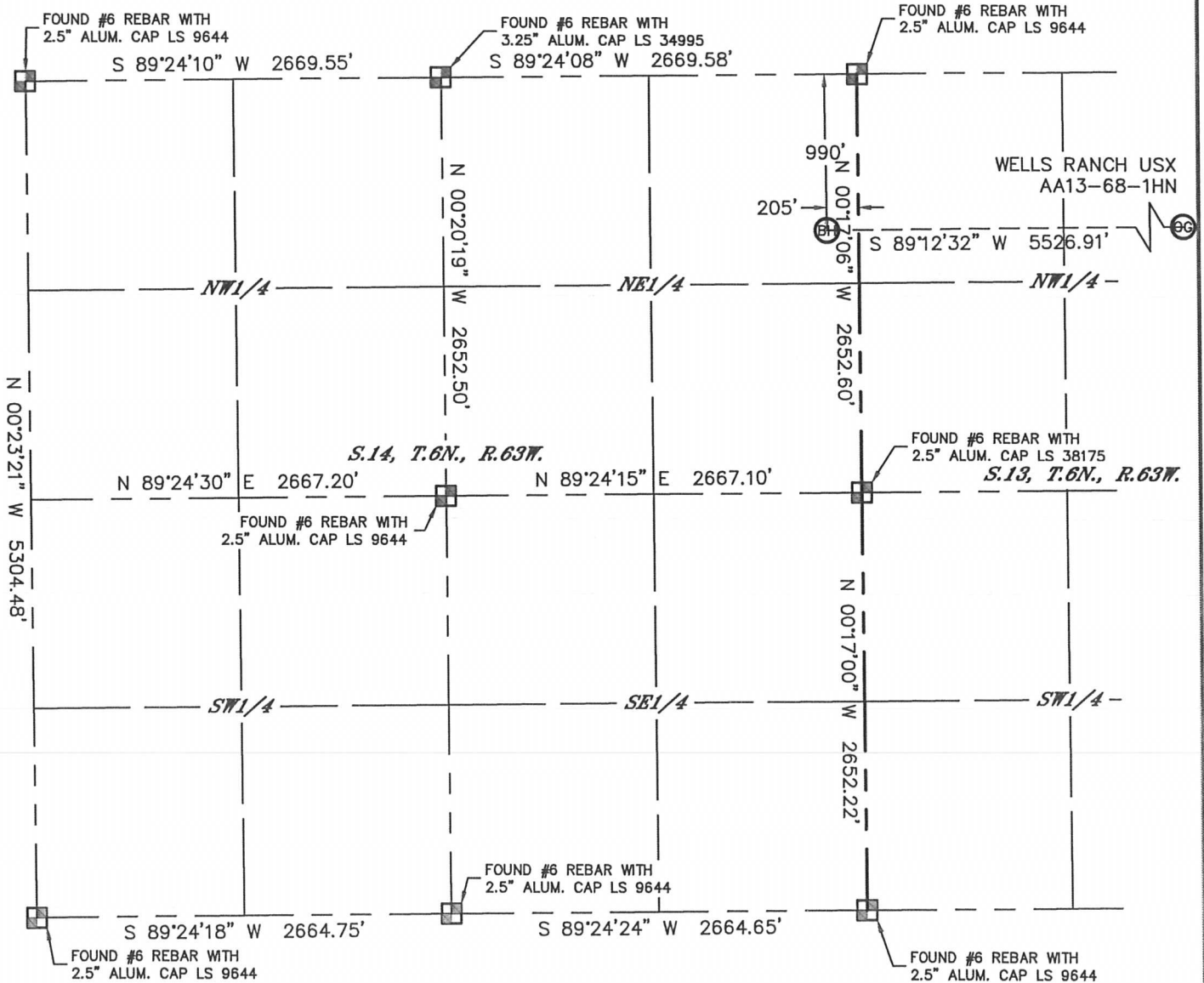


Lat40°, Inc. 1635 Foxtrail Drive, Suite 325 Loveland, CO 970-776-3321

WELL LOCATION CERTIFICATE

THIS MAP DOES NOT REPRESENT A BOUNDARY SURVEY

SECTION: 18
TOWNSHIP: 6N
RANGE: 62W



NOTE

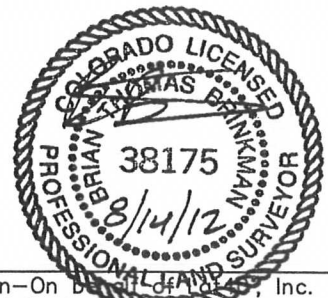
According to Colorado law, you must commence any legal action based upon any defect in this W.L.C. within three years after you discover such defect. In no event, may any action based upon any defect in this survey be commenced more than ten years after the date of the certificate shown hereon. (13-80-105 C.R.S.)

LEGEND

- = ALIQUOT MONUMENT AS DESCRIBED
- = CALCULATED POSITION

SHEET 3 OF 3

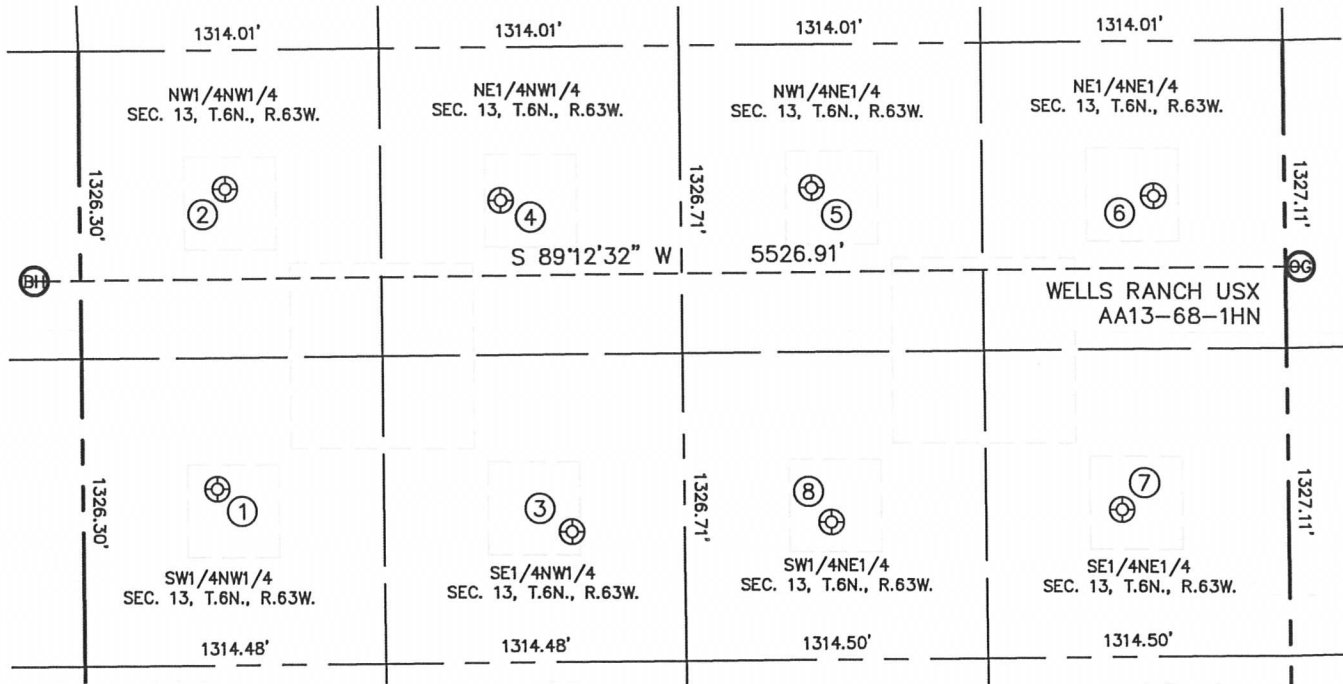
Brian T. Brinkman—On behalf of Lat40°, Inc.
Colorado Licensed Professional Land Surveyor No. 38175
DATE: 8/14/2012
PROJECT#: 2012094



SITE SKETCH

WELLS RANCH USX AA13-68-1HN

SECTION: 18
TOWNSHIP: 6N
RANGE: 62W



- | | | | |
|---|--|--|--|
| <p>①</p> <p>WELLS RANCH USX
AA13-05
SW1/4NW1/4
1892' FNL
587' FWL
LAT-40.48865°N
LONG-104.39214°W
PDOP: 1.1
ELEV: 4832'</p> | <p>②</p> <p>WELLS RANCH USX
AA13-04
NW1/4NW1/4
601' FNL
636' FWL
LAT-40.49220°N
LONG-104.39193°W
PDOP: 1.4
ELEV: 4839'</p> | <p>③</p> <p>WELLS RANCH USX
AA13-06
SE1/4NW1/4
2091' FNL
2134' FWL
LAT-40.48810°N
LONG-104.38659°W
PDOP: 1.2
ELEV: 4798'</p> | <p>④</p> <p>WELLS RANCH USX
AA13-03
NE1/4NW1/4
661' FNL
1840' FWL
LAT-40.49203°N
LONG-104.38760°W
PDOP: 1.2
ELEV: 4828'</p> |
| <p>⑤</p> <p>WELLS RANCH USX
AA13-02
NW1/4NE1/4
618' FNL
2058' FEL
LAT-40.49214°N
LONG-104.38272°W
PDOP: 1.1
ELEV: 4817'</p> | <p>⑥</p> <p>WELLS RANCH USX
AA13-01
NE1/4NE1/4
669' FNL
565' FEL
LAT-40.49200°N
LONG-104.37735°W
PDOP: 1.3
ELEV: 4844'</p> | <p>⑦</p> <p>WELLS RANCH USX
AA13-08
SE1/4NE1/4
2019' FNL
719' FEL
LAT-40.48829°N
LONG-104.37794°W
PDOP: 3.2
ELEV: 4814'</p> | <p>⑧</p> <p>WELLS RANCH USX
AA13-07
SW1/4NE1/4
2060' FNL
1990' FEL
LAT-40.48818°N
LONG-104.38251°W
PDOP: 2.3
ELEV: 4803'</p> |

