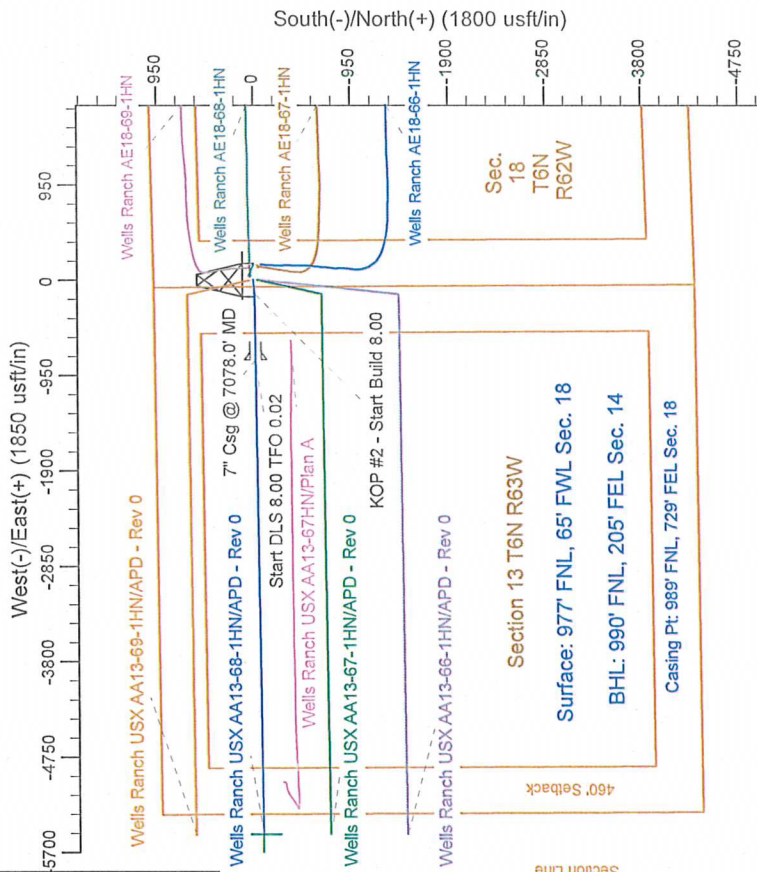
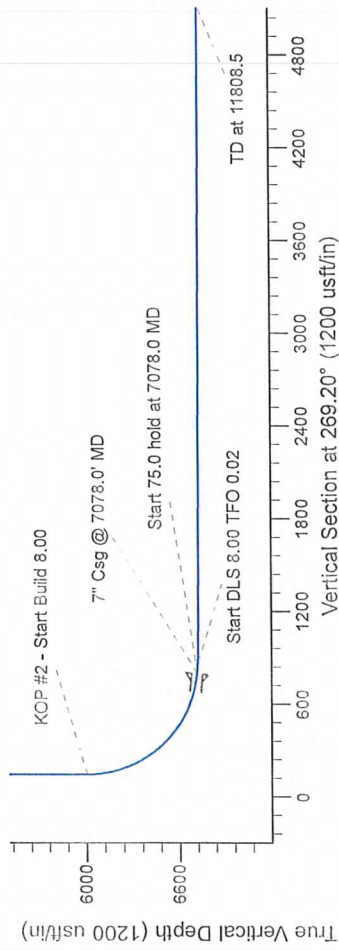
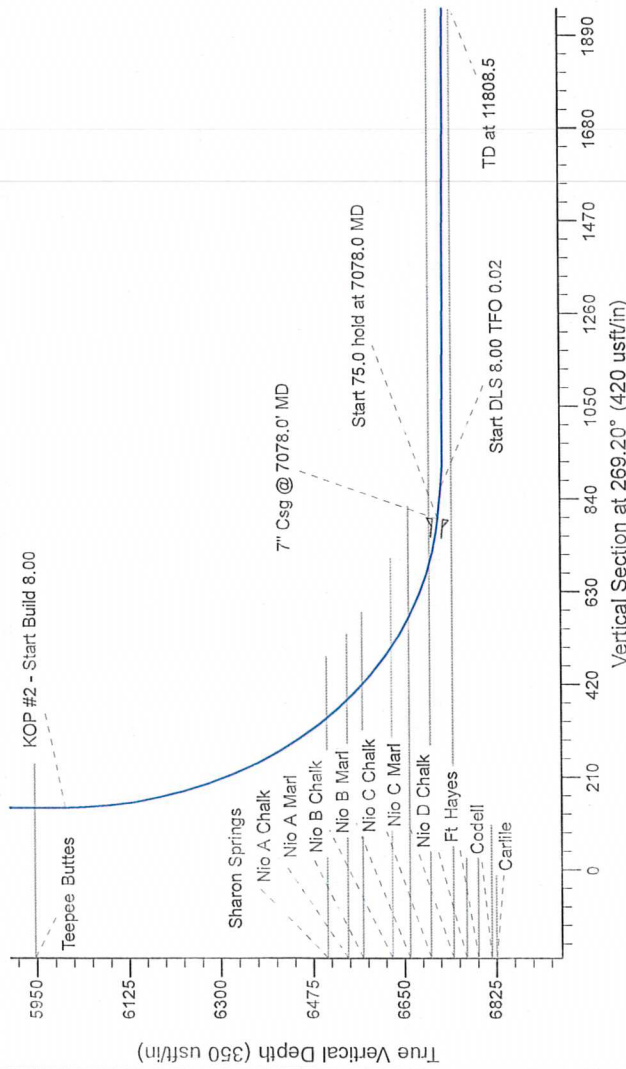


# Northern Region Drilling

Geodetic System: US State Plane 1983  
Datum: North American Datum  
Ellipsoid: GRS 1980  
Zone: Colorado Northern Zone  
System Datum: Mean Sea Level

SECTION DETAILS										
sec	MD	Inc	Azi	TVD	N/L-S	+E/W	Dleg	T-Face	V-Set	Target
1	0.0	0.00	0.00	0.0	0.0	0.0	0.00	0.00	0.0	
2	2200.0	0.00	0.00	2200.0	0.0	0.0	0.00	0.00	0.0	
3	2860.6	12.32	264.69	2677.1	-4.6	-50.0	2.50	264.69	50.1	
4	2873.7	12.32	264.69	2865.9	-8.4	-90.0	0.00	0.00	90.1	
5	3354.3	0.00	0.00	3343.0	-13.0	-140.0	2.50	180.00	140.2	
6	6015.5	0.00	0.00	6004.2	-13.0	-140.0	0.00	0.00	140.2	
7	7078.0	85.00	269.32	6717.7	-20.8	-793.7	8.00	269.32	793.9	
8	7153.0	85.00	269.32	6724.2	-21.6	-868.4	0.00	0.00	868.7	
9	7212.4	89.75	269.32	6727.0	-22.4	-927.7	8.00	0.02	927.9	
10	11806.5	89.75	269.32	6747.1	-76.7	-5523.4	0.00	0.00	5524.0	

Wells Ranch USXAA13-68-1HN BHL 990 FNL 205 FEL



Azimuths to Grid North  
 True North:  $-0.73^\circ$   
 Magnetic North:  $7.68^\circ$

Magnetic Field  
 Strength: 53085.8snT  
 Dip Angle:  $67.15^\circ$   
 Date: 12/13/2012  
 Model: ICRF200510

WELL DETAILS: Wells Ranch USX AA13-68-1HN			
Northing	Ground Level:	4851.0	Longitude
1423750.88	Easting	Latitude	-104.375100
	3312866.67	40.491150	
Plan: APD - Rev 0 (Wells Ranch USX AA13-68-1HN/Original Drilling)			
Created By: Camie Willers		Date: 16:36, December 20 2012	
Checked: _____		Date: _____	
Reviewed: _____		Date: _____	
Approved: _____		Date: _____	