

T6N, R90W, 6th. P.M.

PetroShare Corp.

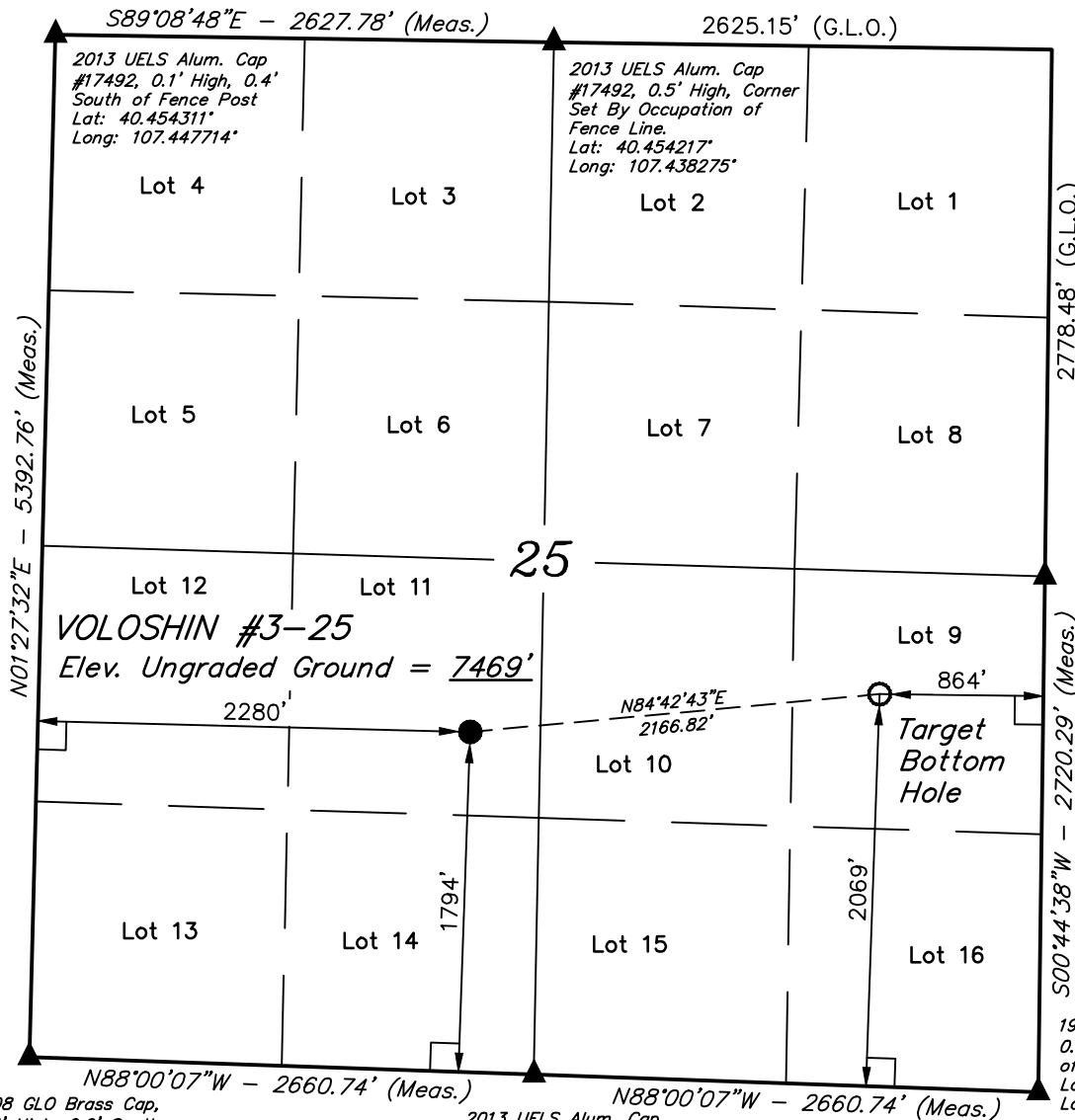
Well location, VOLOSHIN #3-25, located as shown in Lot 11 of Section 25, T6N, R90W, 6th. P.M., Moffat County, Colorado.

BASIS OF ELEVATION

SPOT ELEVATION AT A ROAD INTERSECTION LOCATED IN THE SOUTHWEST 1/4 OF SECTION 20, T6N, R88W, 6th P.M. TAKEN FROM THE HAYDEN, QUADRANGLE, COLORADO, 7.5 MINUTE SERIES (TOPOGRAPHIC MAP) PUBLISHED BY THE UNITED STATES DEPARTMENT OF THE INTERIOR, GEOLOGICAL SURVEY. SAID ELEVATION IS MARKED AS BEING 6445 FEET.

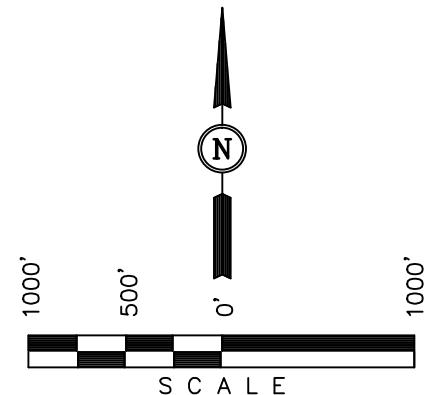
BASIS OF BEARINGS

BASIS OF BEARINGS IS A G.P.S. OBSERVATION.



1908 GLO Brass Cap
1.8' High, Adjacent to
Barbed Wire Fence
Lat: 40.446497°
Long: 107.428958°

1908 GLO Brass Cap
0.9' High, 0.4' East
of Fence Post
Lat: 40.439033°
Long: 107.429069°



CERTIFICATE

THIS IS TO CERTIFY THAT THE ABOVE PLAT WAS PREPARED FROM FIELD NOTES OF ACTUAL SURVEYS MADE BY ME OR UNDER MY SUPERVISION AND THAT THE SAME ARE TRUE AND CORRECT TO THE BEST OF MY KNOWLEDGE AND BELIEF.

REGISTERED LAND SURVEYOR
REGISTRATION NO. 17492
STATE OF COLORADO

REVISED: 02-26-13 T.B.
REVISED: 02-19-13 H.K.W.
REVISED: 02-15-13 A.D.

1908 GLO Brass Cap,
0.5' High, 0.6' South
of East-West-North
Fence Line
Lat: 40.439517°
Long: 107.448172°

2013 UELS Alum. Cap
#17492, Flush with Ground,
Set By Single Proportion
& Fence Occupation
Lat: 40.439275°
Long: 107.438619°

PDOP = 1.7

LEGEND:

- └─┘ = 90° SYMBOL
- = PROPOSED WELL HEAD.
- ▲ = SECTION CORNERS LOCATED.

NAD 83 (TARGET BOTTOM HOLE)	NAD 83 (SURFACE LOCATION)
LATITUDE = 40°26'41.24" (40.444789)	LATITUDE = 40°26'39.24" (40.444233)
LONGITUDE = 107°25'55.51" (107.432086)	LONGITUDE = 107°26'23.41" (107.439836)
NAD 27 (TARGET BOTTOM HOLE)	NAD 27 (SURFACE LOCATION)
LATITUDE = 40°26'41.34" (40.444817)	LATITUDE = 40°26'39.33" (40.444258)
LONGITUDE = 107°25'53.29" (107.431469)	LONGITUDE = 107°26'21.18" (107.439217)
STATE PLANE NAD 83	STATE PLANE NAD 83
N: 1410735.43 E: 2462291.83	N: 1410579.31 E: 2460131.39
STATE PLANE NAD 27	STATE PLANE NAD 27
N: 410734.33 E: 1462449.52	N: 410578.22 E: 1460289.07

UINTAH ENGINEERING & LAND SURVEYING
85 SOUTH 200 EAST - VERNAL, UTAH 84078
(435) 789-1017

SCALE 1" = 1000'	DATE SURVEYED: 01-25-13	DATE DRAWN: 01-28-13
PARTY G.M. M.A. H.K.W.	REFERENCES G.L.O. PLAT	
WEATHER COLD	FILE PetroShare Corp.	