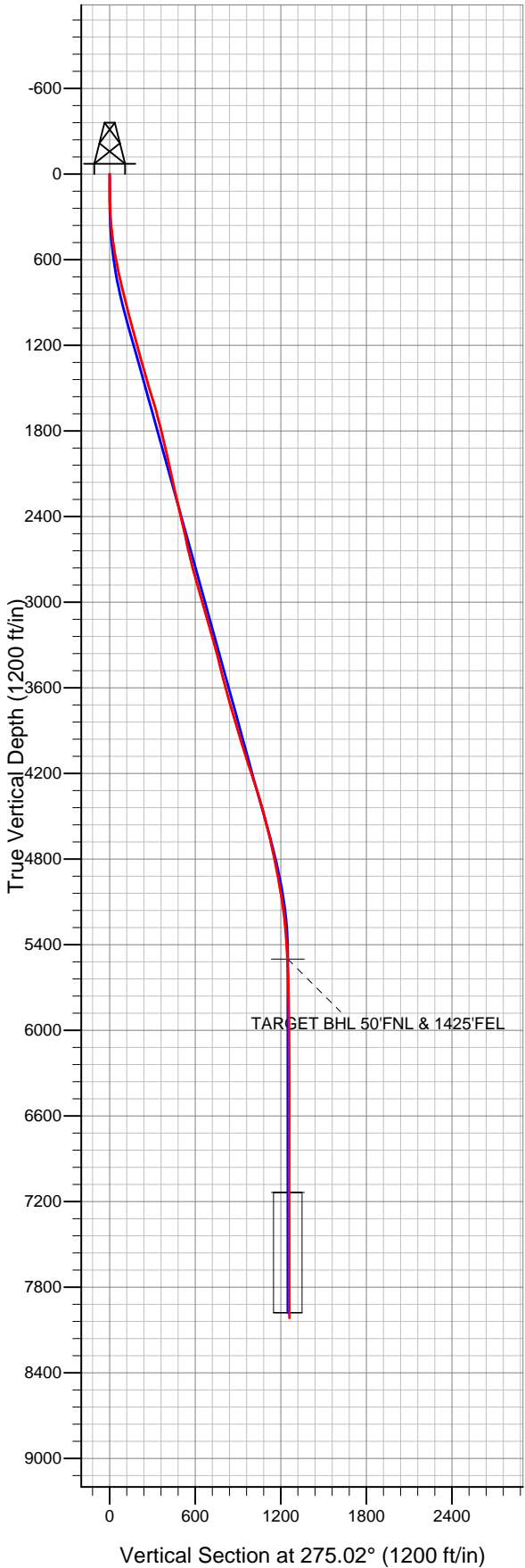
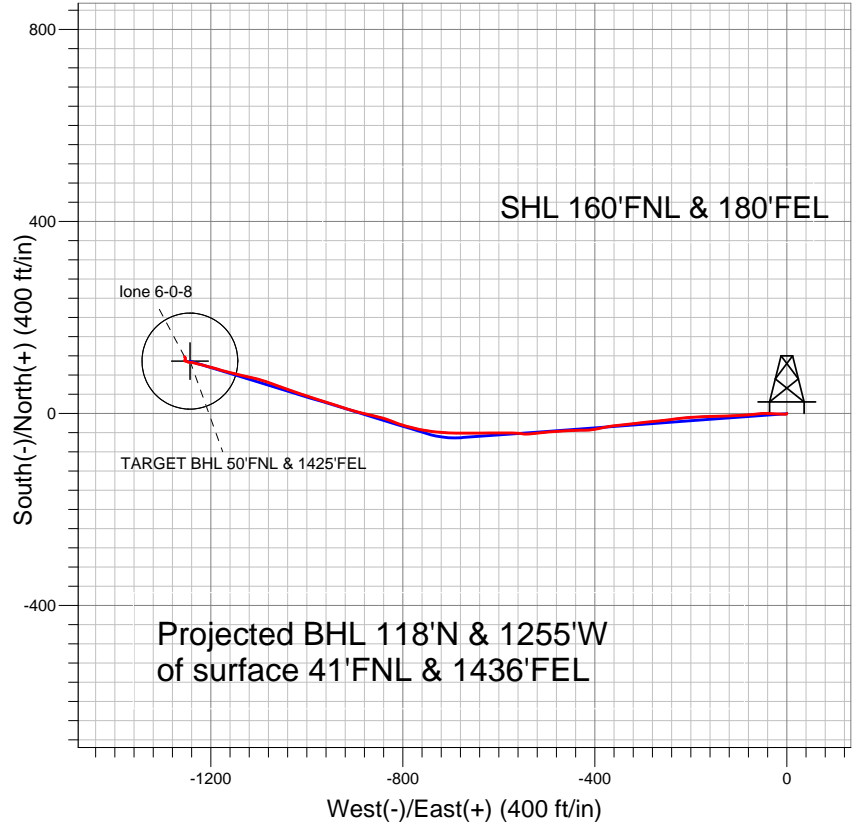


Well Name: **lone 6-0-8**  
 Surface Location: lone 6-0-8 Pad Sec.8-T2N-R66W  
 North American Datum 1983 US State Plane 1983 Colorado Northern Zone  
 Ground Elevation: 4905.0  
 +N/-S +E/-W Northing Easting Latitude Longitude Slot  
 0.0 0.0 1301705.52 3197796.36 40.159410 -104.792310  
 Original Well Elev WELL @ 4918.0ft (Original Well Elev)



## EnCana Oil & Gas Weld County CO



### LEGEND

- ✕ lone 6-0-8, Wellbore #1, Plan #1 (12-07-12) R V0
- Wellbore #1
- Survey #1

## Final Survey Plot

Projected Final Survey -  
 8175'MD & 8014'TVD @ 1261'VS  
 0.4 deg Inc 297.3 deg AZ

Project: SEC.8-T2N-R66W  
 Site: lone 6-0-8 Pad Sec.8-T2N-R66W  
 Well: lone 6-0-8  
 Plan: Wellbore #1



## **Directional**

### **EnCana Oil & Gas Weld County CO**

**SEC.8-T2N-R66W**

**lone 6-0-8 Pad Sec.8-T2N-R66W**

**lone 6-0-8**

**Wellbore #1**

**Survey: Survey #1**

### **Standard Survey Report**

**18 December, 2012**

<b>Company:</b>	EnCana Oil & Gas Weld County CO	<b>Local Co-ordinate Reference:</b>	Well lone 6-0-8
<b>Project:</b>	SEC.8-T2N-R66W	<b>TVD Reference:</b>	WELL @ 4918.0ft (Original Well Elev)
<b>Site:</b>	lone 6-0-8 Pad Sec.8-T2N-R66W	<b>MD Reference:</b>	WELL @ 4918.0ft (Original Well Elev)
<b>Well:</b>	lone 6-0-8	<b>North Reference:</b>	True
<b>Wellbore:</b>	Wellbore #1	<b>Survey Calculation Method:</b>	Minimum Curvature
<b>Design:</b>	Wellbore #1	<b>Database:</b>	Landmark

<b>Project</b>	SEC.8-T2N-R66W, Weld County, CO		
<b>Map System:</b>	US State Plane 1983	<b>System Datum:</b>	Mean Sea Level
<b>Geo Datum:</b>	North American Datum 1983		Using Well Reference Point
<b>Map Zone:</b>	Colorado Northern Zone		Using geodetic scale factor

<b>Site</b>	lone 6-0-8 Pad Sec.8-T2N-R66W		
<b>Site Position:</b>		<b>Northing:</b>	1,301,705.54 ft
<b>From:</b>	Lat/Long	<b>Easting:</b>	3,197,796.36 ft
<b>Position Uncertainty:</b>	0.0 ft	<b>Slot Radius:</b>	"
		<b>Latitude:</b>	40.159410
		<b>Longitude:</b>	-104.792310
		<b>Grid Convergence:</b>	0.46 °

<b>Well</b>	lone 6-0-8		
<b>Well Position</b>	<b>+N/-S</b>	0.0 ft	<b>Northing:</b> 1,301,705.52 ft
	<b>+E/-W</b>	0.0 ft	<b>Easting:</b> 3,197,796.36 ft
<b>Position Uncertainty</b>	0.0 ft	<b>Wellhead Elevation:</b>	ft
		<b>Latitude:</b>	40.159410
		<b>Longitude:</b>	-104.792310
		<b>Ground Level:</b>	4,905.0 ft

<b>Wellbore</b>	Wellbore #1				
<b>Magnetics</b>	<b>Model Name</b>	<b>Sample Date</b>	<b>Declination (°)</b>	<b>Dip Angle (°)</b>	<b>Field Strength (nT)</b>
	IGRF2010	12/7/2012	8.66	66.80	52,845

<b>Design</b>	Wellbore #1				
<b>Audit Notes:</b>					
<b>Version:</b>	1.0	<b>Phase:</b>	ACTUAL	<b>Tie On Depth:</b>	0.0
<b>Vertical Section:</b>	<b>Depth From (TVD) (ft)</b>	<b>+N/-S (ft)</b>	<b>+E/-W (ft)</b>	<b>Direction (°)</b>	
	0.0	0.0	0.0	275.02	

<b>Survey Program</b>	<b>Date</b>	12/18/2012			
<b>From (ft)</b>	<b>To (ft)</b>	<b>Survey (Wellbore)</b>	<b>Tool Name</b>	<b>Description</b>	
138.0	8,175.0	Survey #1 (Wellbore #1)	MWD	MWD - Standard	

<b>Survey</b>										
<b>Measured Depth (ft)</b>	<b>Inclination (°)</b>	<b>Azimuth (°)</b>	<b>Vertical Depth (ft)</b>	<b>+N/-S (ft)</b>	<b>+E/-W (ft)</b>	<b>Vertical Section (ft)</b>	<b>Dogleg Rate (°/100ft)</b>	<b>Build Rate (°/100ft)</b>	<b>Turn Rate (°/100ft)</b>	
0.0	0.00	0.00	0.0	0.0	0.0	0.0	0.00	0.00	0.00	
138.0	0.70	216.10	138.0	-0.7	-0.5	0.4	0.51	0.51	0.00	
228.0	2.00	263.20	228.0	-1.3	-2.4	2.3	1.79	1.44	52.33	
319.0	4.00	273.40	318.8	-1.3	-7.1	7.0	2.27	2.20	11.21	
409.0	6.30	272.30	408.5	-0.9	-15.2	15.1	2.56	2.56	-1.22	
501.0	8.40	273.20	499.7	-0.3	-26.9	26.8	2.29	2.28	0.98	
591.0	10.90	270.90	588.4	0.2	-42.0	41.9	2.81	2.78	-2.56	
683.0	12.50	265.10	678.5	-0.6	-60.6	60.4	2.16	1.74	-6.30	
793.0	13.50	265.30	785.7	-2.6	-85.3	84.7	0.91	0.91	0.18	
891.0	13.80	265.30	880.9	-4.5	-108.3	107.5	0.31	0.31	0.00	
976.0	14.20	270.70	963.4	-5.2	-128.9	127.9	1.61	0.47	6.35	
1,062.0	15.30	269.20	1,046.6	-5.3	-150.8	149.7	1.35	1.28	-1.74	
1,147.0	15.40	266.00	1,128.5	-6.2	-173.2	172.0	1.00	0.12	-3.76	

<b>Company:</b>	EnCana Oil & Gas Weld County CO	<b>Local Co-ordinate Reference:</b>	Well lone 6-0-8
<b>Project:</b>	SEC.8-T2N-R66W	<b>TVD Reference:</b>	WELL @ 4918.0ft (Original Well Elev)
<b>Site:</b>	lone 6-0-8 Pad Sec.8-T2N-R66W	<b>MD Reference:</b>	WELL @ 4918.0ft (Original Well Elev)
<b>Well:</b>	lone 6-0-8	<b>North Reference:</b>	True
<b>Wellbore:</b>	Wellbore #1	<b>Survey Calculation Method:</b>	Minimum Curvature
<b>Design:</b>	Wellbore #1	<b>Database:</b>	Landmark

Survey										
Measured Depth (ft)	Inclination (°)	Azimuth (°)	Vertical Depth (ft)	+N/-S (ft)	+E/-W (ft)	Vertical Section (ft)	Dogleg Rate (°/100ft)	Build Rate (°/100ft)	Turn Rate (°/100ft)	
1,233.0	15.70	266.20	1,211.4	-7.8	-196.2	194.8	0.35	0.35	0.23	
1,319.0	15.80	263.20	1,294.2	-9.9	-219.5	217.8	0.95	0.12	-3.49	
1,404.0	16.70	263.70	1,375.8	-12.6	-243.1	241.1	1.07	1.06	0.59	
1,490.0	16.30	263.50	1,458.2	-15.4	-267.4	265.0	0.47	-0.47	-0.23	
1,575.0	17.40	264.40	1,539.6	-18.0	-291.9	289.2	1.33	1.29	1.06	
1,661.0	16.80	263.90	1,621.8	-20.5	-317.0	314.0	0.72	-0.70	-0.58	
1,747.0	15.60	263.00	1,704.4	-23.3	-340.9	337.5	1.43	-1.40	-1.05	
1,832.0	14.50	262.70	1,786.4	-26.0	-362.8	359.1	1.30	-1.29	-0.35	
1,918.0	13.30	257.40	1,869.9	-29.5	-383.1	379.1	2.03	-1.40	-6.16	
2,003.0	12.80	261.40	1,952.7	-33.1	-402.0	397.5	1.21	-0.59	4.71	
2,089.0	13.10	269.70	2,036.6	-34.5	-421.1	416.5	2.19	0.35	9.65	
2,175.0	12.00	267.80	2,120.5	-34.9	-439.8	435.1	1.37	-1.28	-2.21	
2,260.0	12.80	267.10	2,203.5	-35.8	-458.0	453.2	0.96	0.94	-0.82	
2,346.0	13.60	266.00	2,287.2	-36.9	-477.6	472.6	0.97	0.93	-1.28	
2,431.0	13.20	266.00	2,369.9	-38.3	-497.3	492.0	0.47	-0.47	0.00	
2,517.0	13.00	262.30	2,453.7	-40.3	-516.7	511.2	1.00	-0.23	-4.30	
2,603.0	12.40	265.30	2,537.6	-42.3	-535.5	529.7	1.04	-0.70	3.49	
2,688.0	12.40	278.30	2,620.6	-41.8	-553.6	547.8	3.28	0.00	15.29	
2,774.0	13.60	271.10	2,704.4	-40.3	-572.8	567.1	2.34	1.40	-8.37	
2,859.0	16.10	270.00	2,786.6	-40.1	-594.6	588.8	2.96	2.94	-1.29	
2,945.0	15.80	268.50	2,869.3	-40.4	-618.3	612.3	0.59	-0.35	-1.74	
3,031.0	16.50	269.70	2,951.9	-40.7	-642.2	636.1	0.90	0.81	1.40	
3,116.0	15.80	270.20	3,033.5	-40.8	-665.8	659.7	0.84	-0.82	0.59	
3,202.0	15.70	271.10	3,116.3	-40.5	-689.2	683.0	0.31	-0.12	1.05	
3,287.0	15.70	272.70	3,198.1	-39.7	-712.1	705.9	0.51	0.00	1.88	
3,373.0	16.40	275.80	3,280.8	-38.0	-735.8	729.7	1.29	0.81	3.60	
3,459.0	14.30	281.30	3,363.7	-34.6	-758.3	752.4	2.97	-2.44	6.40	
3,544.0	14.20	284.80	3,446.1	-29.9	-778.7	773.1	1.02	-0.12	4.12	
3,630.0	14.90	285.90	3,529.3	-24.2	-799.5	794.4	0.88	0.81	1.28	
3,715.0	14.90	292.20	3,611.5	-17.1	-820.2	815.5	1.90	0.00	7.41	
3,801.0	16.40	286.20	3,694.3	-9.5	-842.1	838.0	2.56	1.74	-6.98	
3,887.0	17.30	282.20	3,776.6	-3.4	-866.2	862.6	1.71	1.05	-4.65	
3,972.0	16.70	284.80	3,857.9	2.4	-890.4	887.2	1.14	-0.71	3.06	
4,058.0	16.70	286.40	3,940.3	9.0	-914.2	911.5	0.53	0.00	1.86	
4,143.0	17.30	288.90	4,021.5	16.6	-937.9	935.7	1.11	0.71	2.94	
4,229.0	18.10	286.70	4,103.5	24.5	-962.8	961.2	1.21	0.93	-2.56	
4,315.0	19.20	289.20	4,185.0	33.0	-988.9	988.0	1.58	1.28	2.91	
4,400.0	19.00	287.80	4,265.3	41.8	-1,015.3	1,015.1	0.59	-0.24	-1.65	
4,486.0	17.90	289.90	4,346.9	50.6	-1,041.0	1,041.5	1.49	-1.28	2.44	
4,571.0	15.70	290.30	4,428.2	59.1	-1,064.1	1,065.2	2.59	-2.59	0.47	
4,657.0	15.70	288.50	4,511.0	66.8	-1,086.1	1,087.7	0.57	0.00	-2.09	
4,743.0	13.50	284.60	4,594.2	73.0	-1,106.8	1,109.0	2.80	-2.56	-4.53	
4,828.0	13.20	281.80	4,676.9	77.5	-1,125.9	1,128.4	0.84	-0.35	-3.29	
4,914.0	12.20	283.80	4,760.8	81.7	-1,144.4	1,147.1	1.27	-1.16	2.33	
4,999.0	11.10	284.30	4,844.1	85.8	-1,161.0	1,164.1	1.30	-1.29	0.59	
5,085.0	10.60	285.30	4,928.5	90.0	-1,176.7	1,180.0	0.62	-0.58	1.16	
5,171.0	10.40	285.50	5,013.1	94.1	-1,191.8	1,195.4	0.24	-0.23	0.23	
5,256.0	8.50	285.00	5,096.9	97.8	-1,205.2	1,209.2	2.24	-2.24	-0.59	
5,342.0	7.30	284.60	5,182.1	100.8	-1,216.7	1,220.8	1.40	-1.40	-0.47	
5,427.0	5.20	284.10	5,266.6	103.1	-1,225.6	1,229.9	2.47	-2.47	-0.59	
5,513.0	4.70	283.60	5,352.3	104.9	-1,232.8	1,237.3	0.58	-0.58	-0.58	
5,599.0	2.80	277.30	5,438.1	106.0	-1,238.3	1,242.9	2.26	-2.21	-7.33	
5,661.1	2.58	277.87	5,500.1	106.4	-1,241.2	1,245.8	0.36	-0.35	0.91	
TARGET BHL 50°FNL & 1425°FEL										

<b>Company:</b>	EnCana Oil & Gas Weld County CO	<b>Local Co-ordinate Reference:</b>	Well lone 6-0-8
<b>Project:</b>	SEC.8-T2N-R66W	<b>TVD Reference:</b>	WELL @ 4918.0ft (Original Well Elev)
<b>Site:</b>	lone 6-0-8 Pad Sec.8-T2N-R66W	<b>MD Reference:</b>	WELL @ 4918.0ft (Original Well Elev)
<b>Well:</b>	lone 6-0-8	<b>North Reference:</b>	True
<b>Wellbore:</b>	Wellbore #1	<b>Survey Calculation Method:</b>	Minimum Curvature
<b>Design:</b>	Wellbore #1	<b>Database:</b>	Landmark

Survey										
Measured Depth (ft)	Inclination (°)	Azimuth (°)	Vertical Depth (ft)	+N/-S (ft)	+E/-W (ft)	Vertical Section (ft)	Dogleg Rate (°/100ft)	Build Rate (°/100ft)	Turn Rate (°/100ft)	
5,684.0	2.50	278.10	5,523.0	106.5	-1,242.2	1,246.8	0.36	-0.35	1.02	
5,770.0	1.80	269.50	5,609.0	106.8	-1,245.4	1,250.0	0.89	-0.81	-10.00	
5,855.0	1.00	300.30	5,693.9	107.1	-1,247.4	1,252.0	1.26	-0.94	36.24	
6,027.0	0.80	281.10	5,865.9	108.1	-1,249.9	1,254.6	0.21	-0.12	-11.16	
6,198.0	1.00	286.40	6,036.9	108.8	-1,252.5	1,257.2	0.13	0.12	3.10	
6,369.0	0.60	305.10	6,207.9	109.7	-1,254.7	1,259.4	0.28	-0.23	10.94	
6,540.0	0.10	327.10	6,378.9	110.4	-1,255.5	1,260.3	0.30	-0.29	12.87	
6,711.0	0.30	69.50	6,549.9	110.6	-1,255.1	1,260.0	0.20	0.12	59.88	
6,883.0	0.20	84.20	6,721.9	110.8	-1,254.4	1,259.3	0.07	-0.06	8.55	
7,054.0	0.50	55.20	6,892.9	111.3	-1,253.5	1,258.4	0.20	0.18	-16.96	
7,225.0	0.30	347.90	7,063.9	112.2	-1,253.0	1,258.0	0.28	-0.12	-39.36	
7,297.1	0.38	345.98	7,136.0	112.6	-1,253.1	1,258.1	0.12	0.12	-2.66	
TARGET CIRCLE 50'FNL & 1425'FEL										
7,396.0	0.50	344.40	7,234.9	113.3	-1,253.3	1,258.4	0.12	0.12	-1.60	
7,567.0	0.40	352.50	7,405.9	114.6	-1,253.6	1,258.8	0.07	-0.06	4.74	
7,739.0	0.40	18.70	7,577.9	115.8	-1,253.4	1,258.8	0.11	0.00	15.23	
7,911.0	0.40	333.50	7,749.8	116.9	-1,253.5	1,258.9	0.18	0.00	-26.28	
8,086.0	0.50	296.10	7,924.8	117.8	-1,254.5	1,260.0	0.17	0.06	-21.37	
8,130.0	0.40	297.30	7,968.8	117.9	-1,254.8	1,260.3	0.23	-0.23	2.73	
8,175.0	0.40	297.30	8,013.8	118.1	-1,255.1	1,260.6	0.00	0.00	0.00	

Checked By: _____	Approved By: _____	Date: _____
-------------------	--------------------	-------------