



CEMENT BOND  
LOG

Mesa Wireline

Company	ENCANA OIL & GAS (USA) INC		
Well	IONE 8-2-8		
Field	WATTENBERG		
County	WELD		
State	COLORADO		
Company ENCANA OIL & GAS (USA) INC		Location: API #: 05-123-31576-0000	
Well IONE 8-2-8		Other Services	
Field WATTENBERG		NONE	
County WELD		State COLORADO	
SEC: 8 TWP: 2N RGE: 66W		Elevation	
Permanent Datum GROUND LEVEL		K.B. 4918'	
Log Measured From KELLY BUSHING = 13'		D.F. 4917'	
Drilling Measured From KELLY BUSHING		G.L. 4905'	

Date	19 DECEMBER 2012									
Run Number	ONE									
Depth Driller	8180'									
Depth Logger	8149'									
Bottom Logged Interval	8149'									
Top Log Interval	4800'									
Open Hole Size	7.875"									
Type Fluid	WATER									
Density / Viscosity	~8.3#									
Max. Recorded Temp.	266 DEG F									
Estimated Cement Top	5140'									
Time Well Ready	N/A									
Time Logger on Bottom	N/A									
Equipment Number	10501 PRD01									
Location	AULT, CO									
Recorded By	Z. EMICK									
Witnessed By	T. MAJORS									
Borehole Record										
Run Number	Bit	From	To	Size	Tubing Record					
ONE	12.25"	0'	840'							
TWO	7.875"	840'	8190'							
Casing Record	Size	Wgt/Ft			Top			Bottom		
Surface String	8.625"	24#			0'			838'		
Prot. String										
Production String	4.5"	11.6#			0'			8180'		
Liner										

<<< Fold Here >>>

All interpretations are opinions based on inferences from electrical or other measurements and we cannot and do not guarantee the accuracy or correctness of any interpretation, and we shall not, except in the case of gross or willful negligence on our part, be liable or responsible for any loss, costs, damages, or expenses incurred or sustained by anyone resulting from any interpretation made by any of our officers, agents or employees. These interpretations are also subject to our general terms and conditions set out in our current Price Schedule.

Comments

LOG NOT CORRELATED TO ANY OTHER LOG

SHORT JOINT: 7272' - 7293'

WE APPRECIATE YOUR BUSINESS, MESA WIRELINE LLC, AULT CO. (970) 834-2495



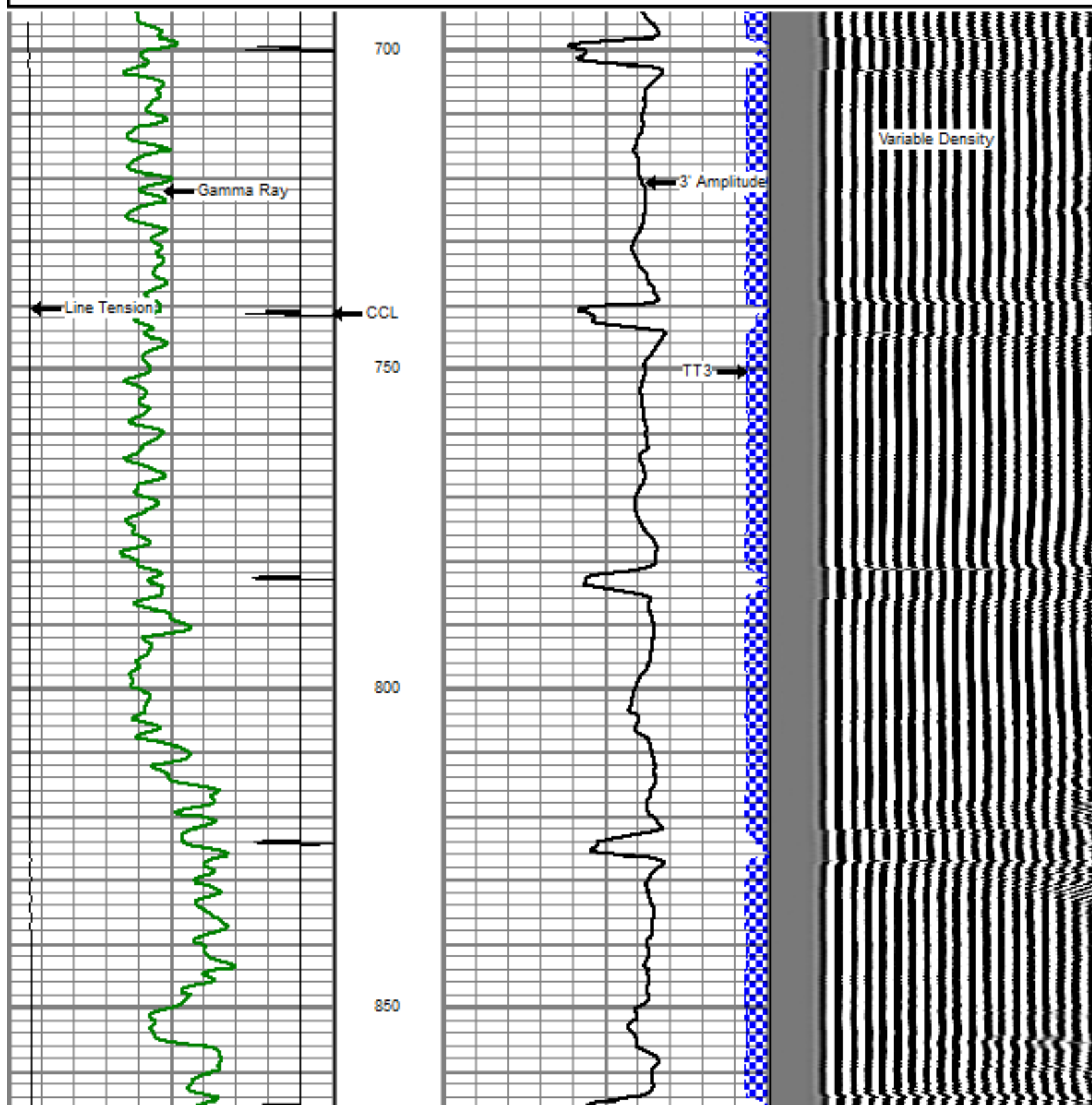
TOP PASS

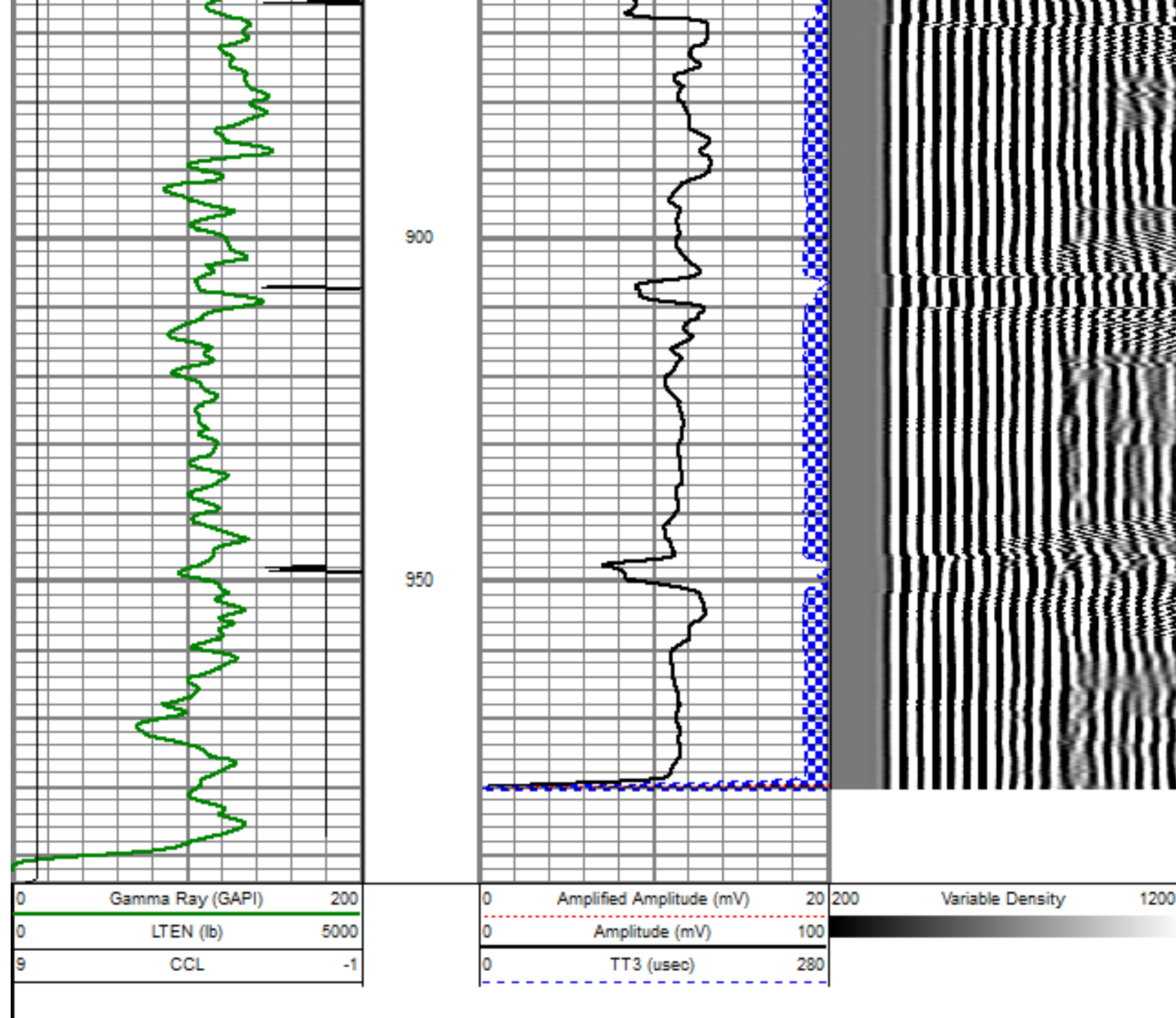
Database File: ione 8-2-8.db  
Dataset Pathname: pass6  
Presentation Format: dobl\_prb  
Dataset Creation: Wed Dec 19 12:11:04 2012 by Log SCH 110930  
Charted by: Depth in Feet scaled 1:240

0	Gamma Ray (GAPI)	200
0	LTEN (lb)	5000
9	CCL	-1

0	Amplified Amplitude (mV)	20
0	Amplitude (mV)	100
0	TT3 (usec)	280

200 Variable Density 1200

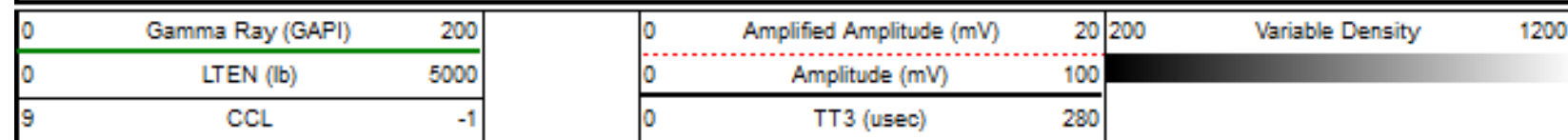


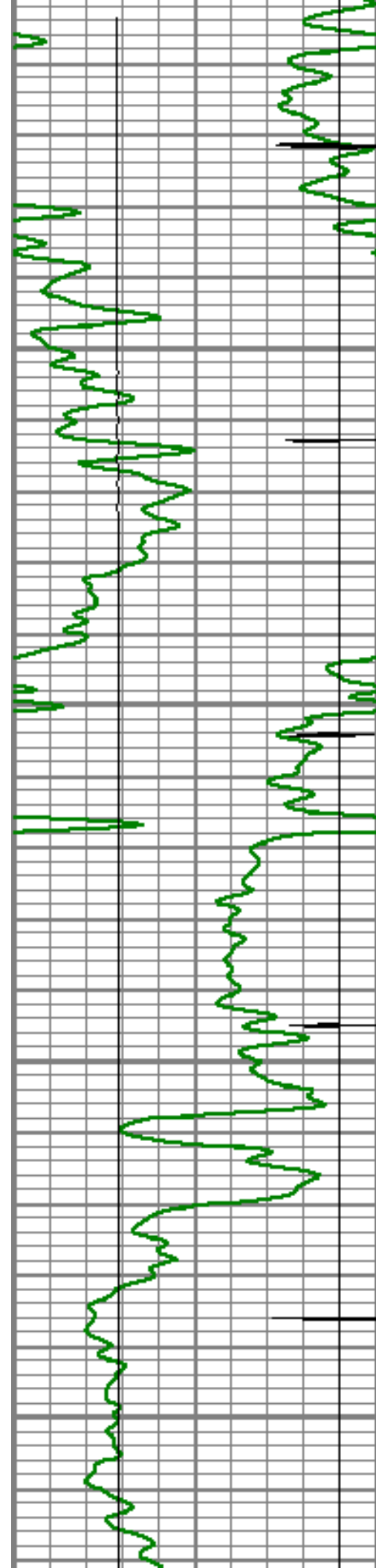


## REPEAT PASS

5" = 100'

Database File: ione 8-2-8.db  
 Dataset Pathname: pass2  
 Presentation Format: dcbl\_prb  
 Dataset Creation: Wed Dec 19 10:49:49 2012 by Log SCH 110930  
 Charted by: Depth in Feet scaled 1:240



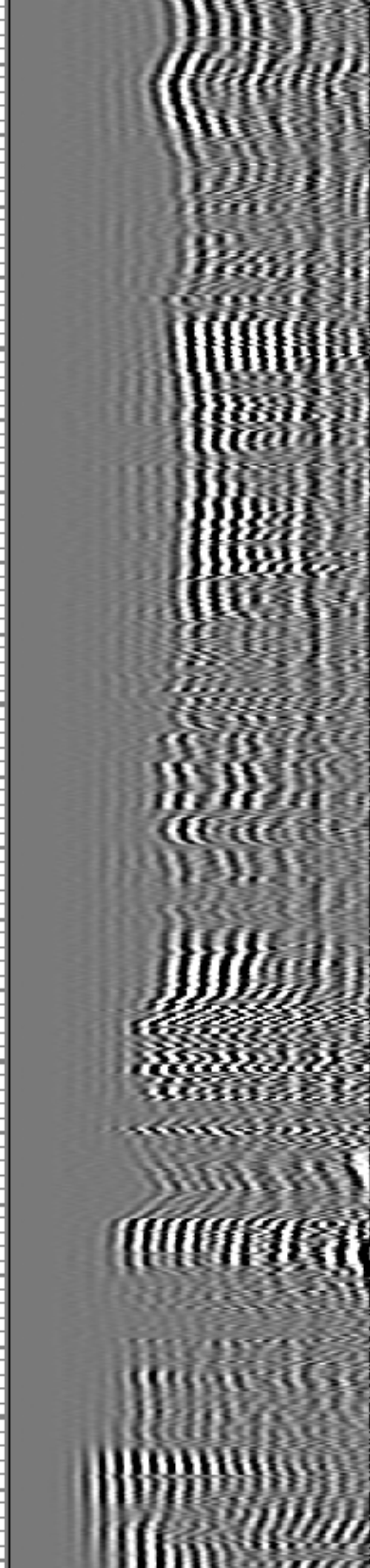
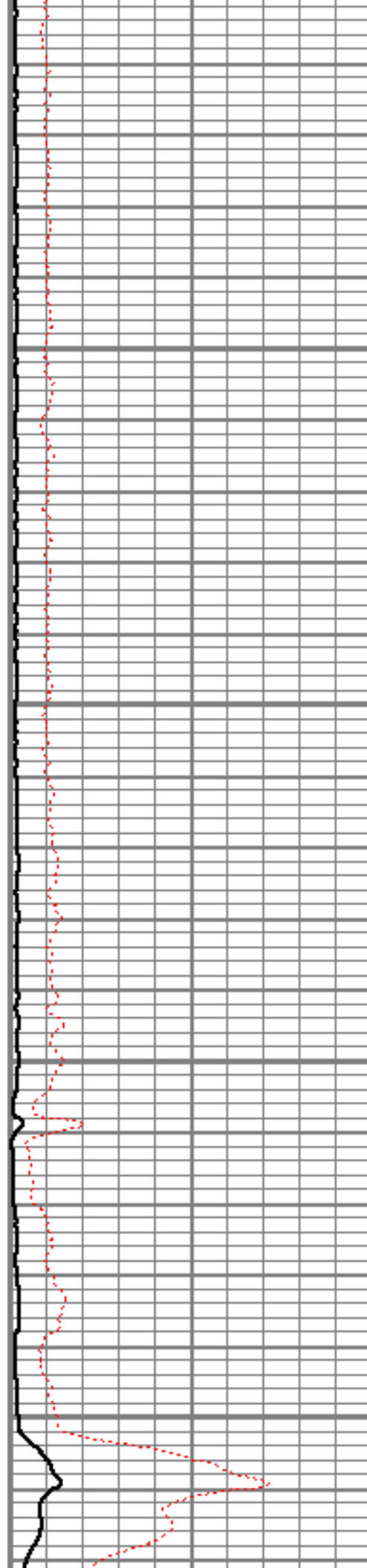


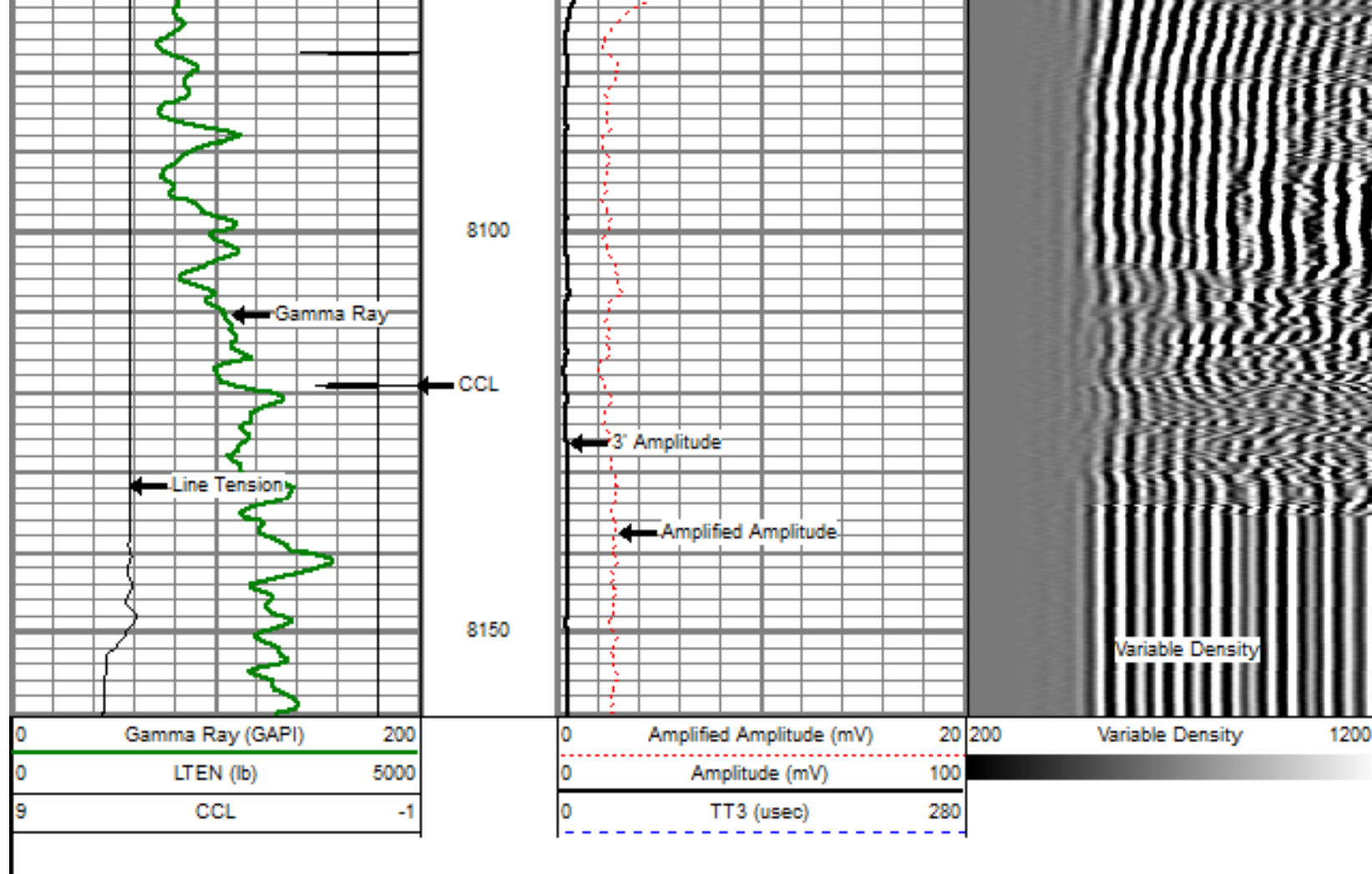
7900

7950

8000

8050

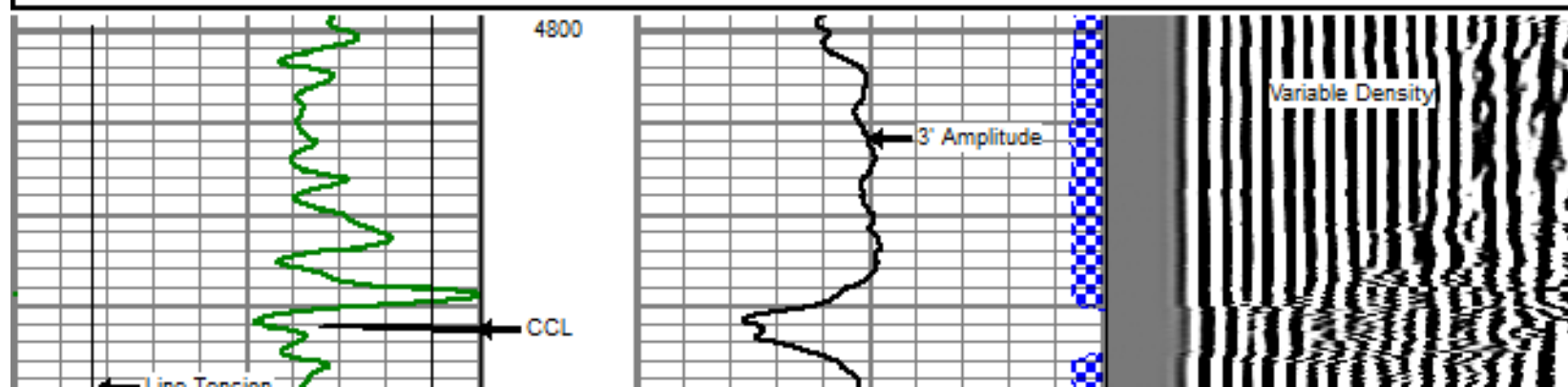
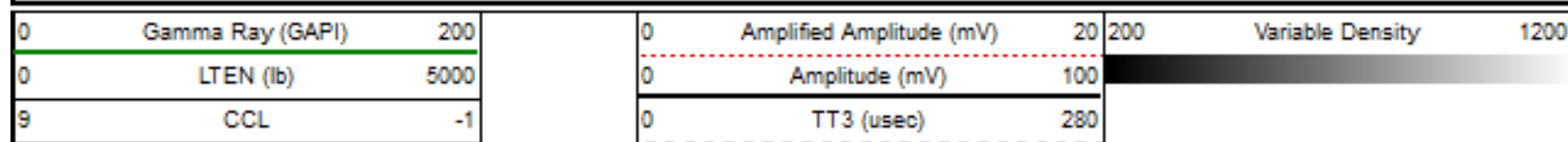


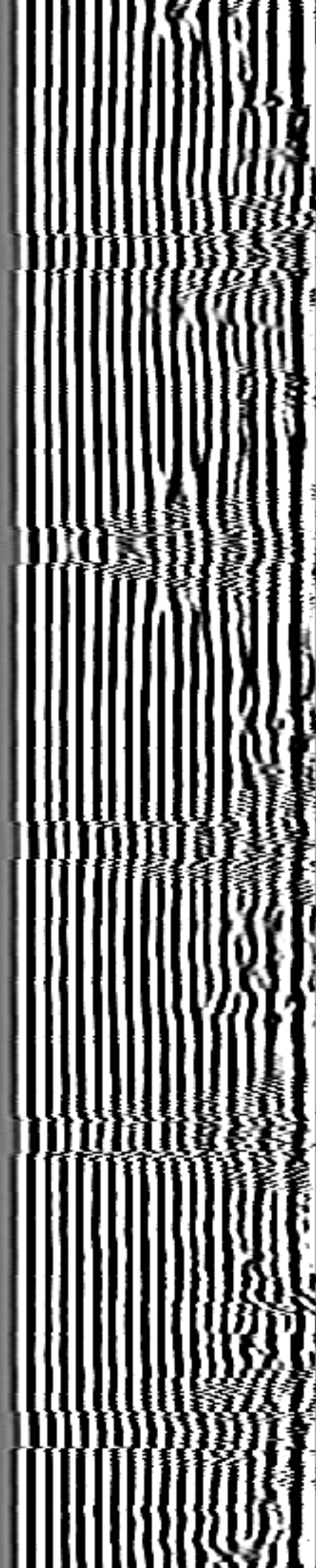
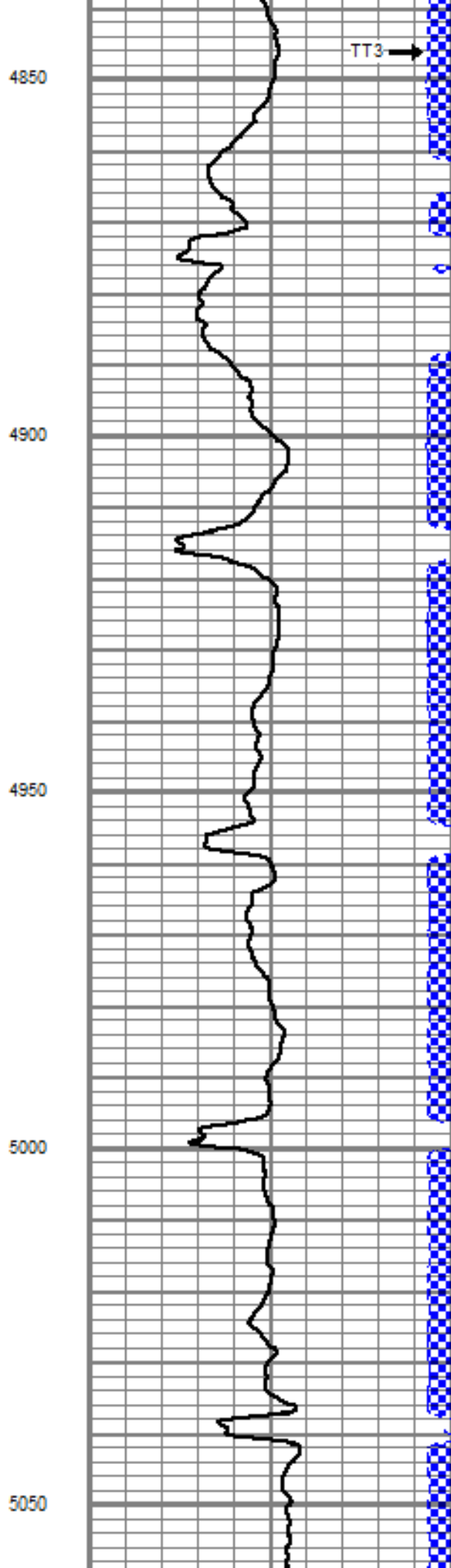
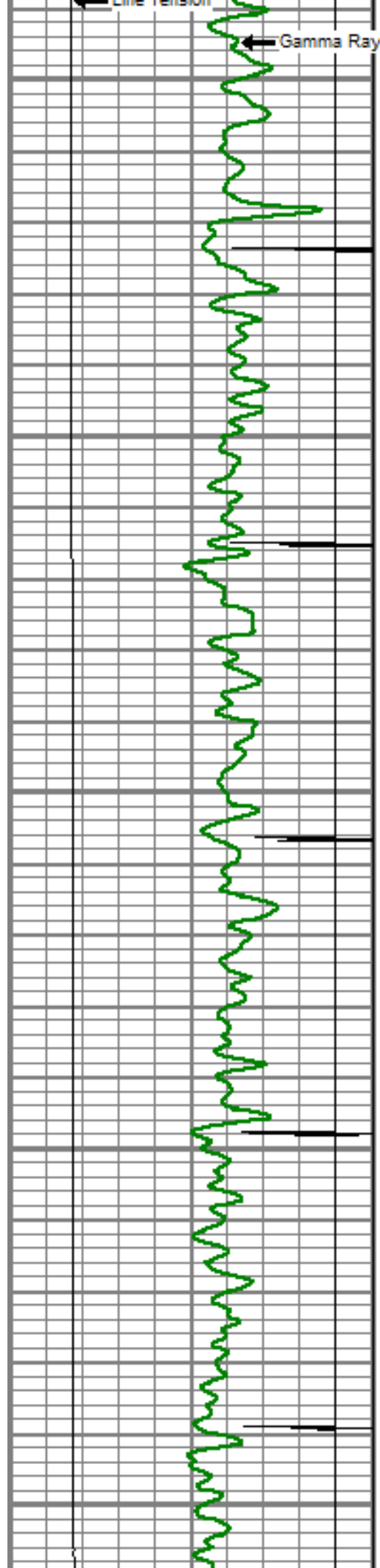


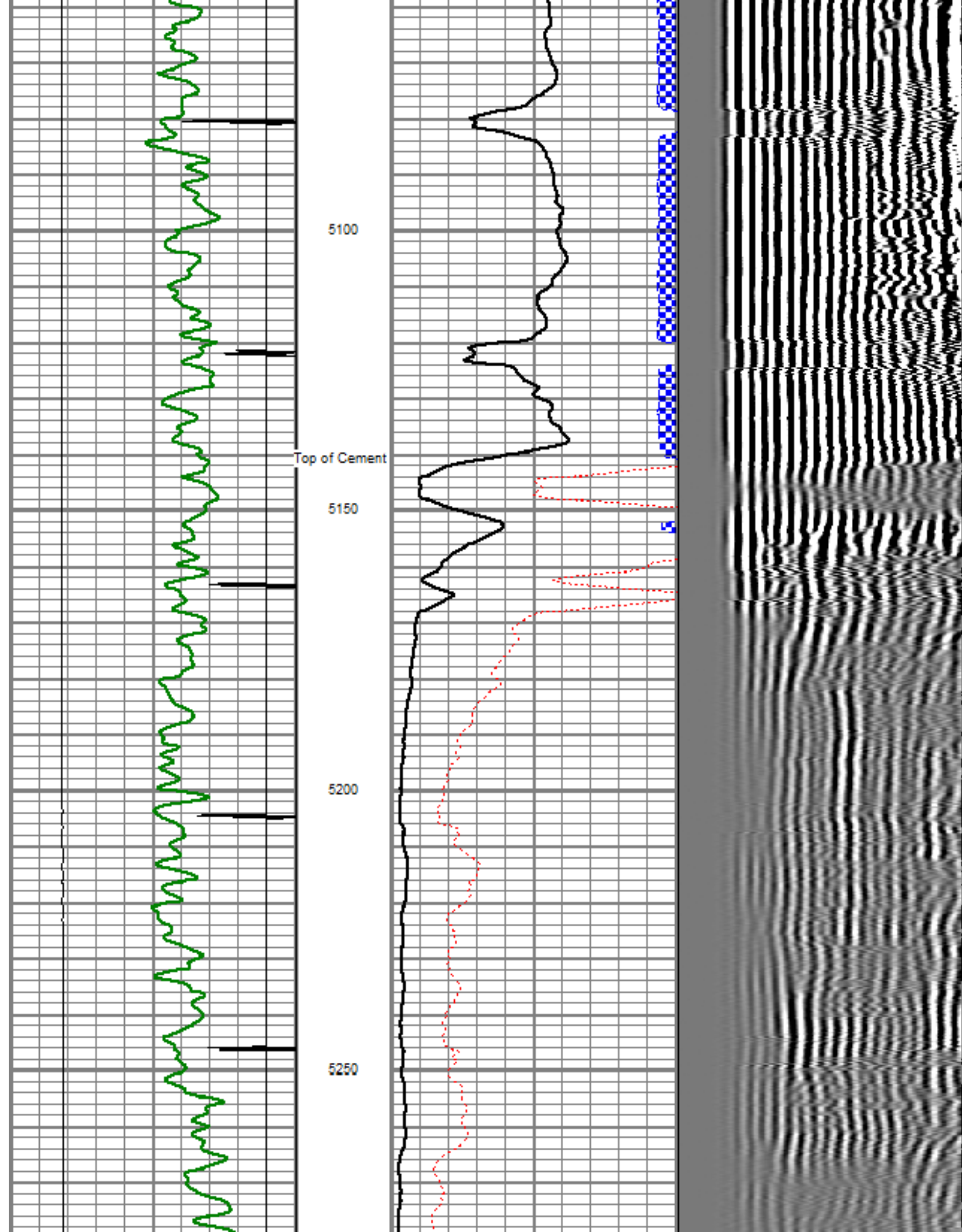
## MAIN PASS

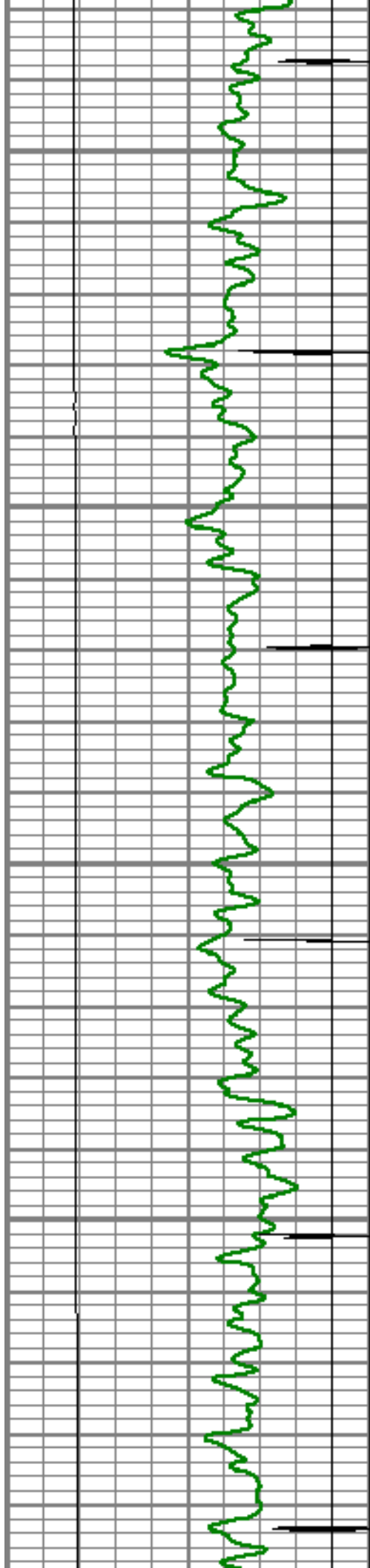
5" = 100'

Database File: ione 8-2-8.db  
 Dataset Pathname: pass4  
 Presentation Format: dcbl\_prb  
 Dataset Creation: Wed Dec 19 10:59:01 2012 by Log SCH 110930  
 Charted by: Depth in Feet scaled 1:240







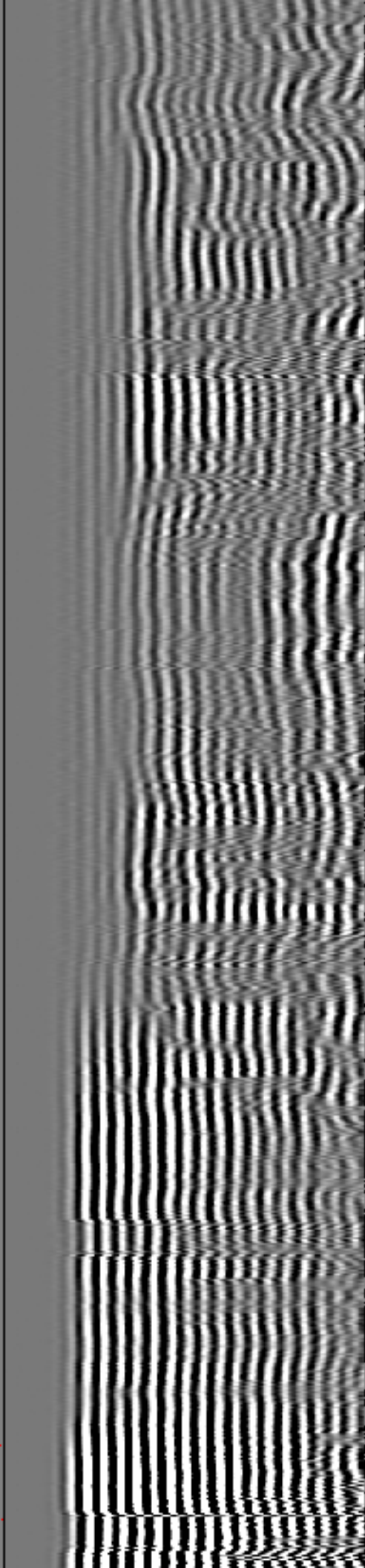
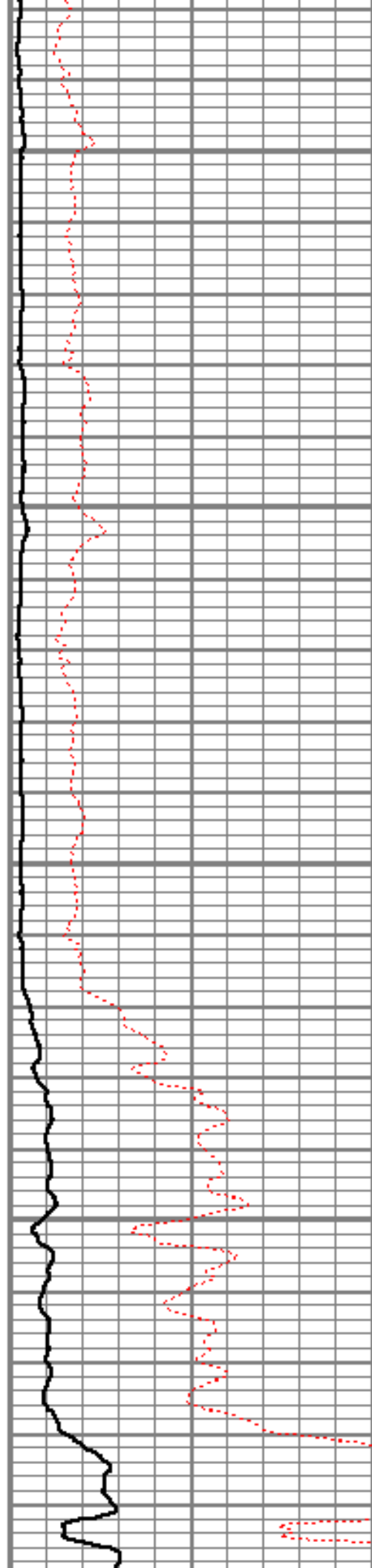


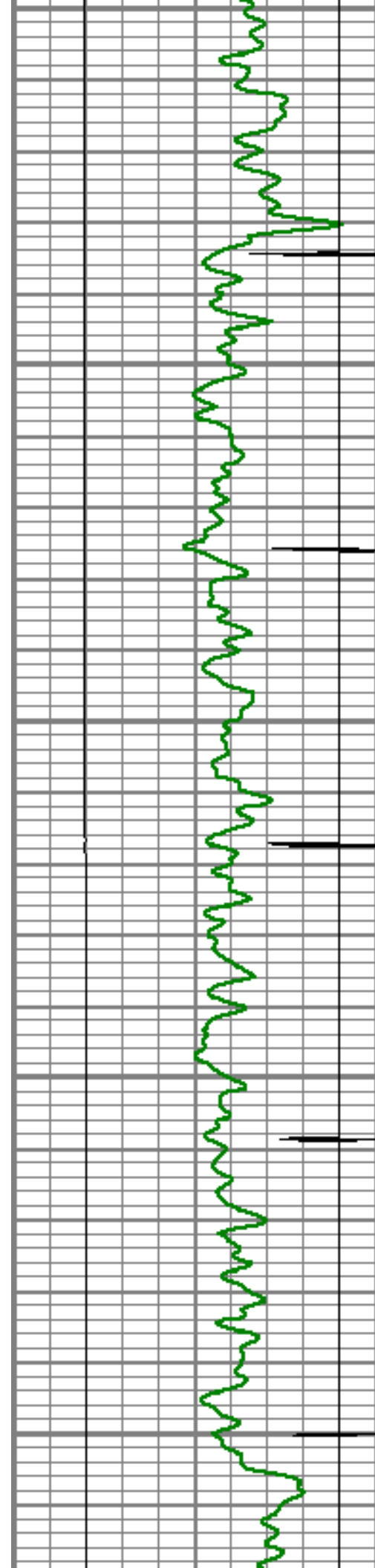
5300

5350

5400

5450





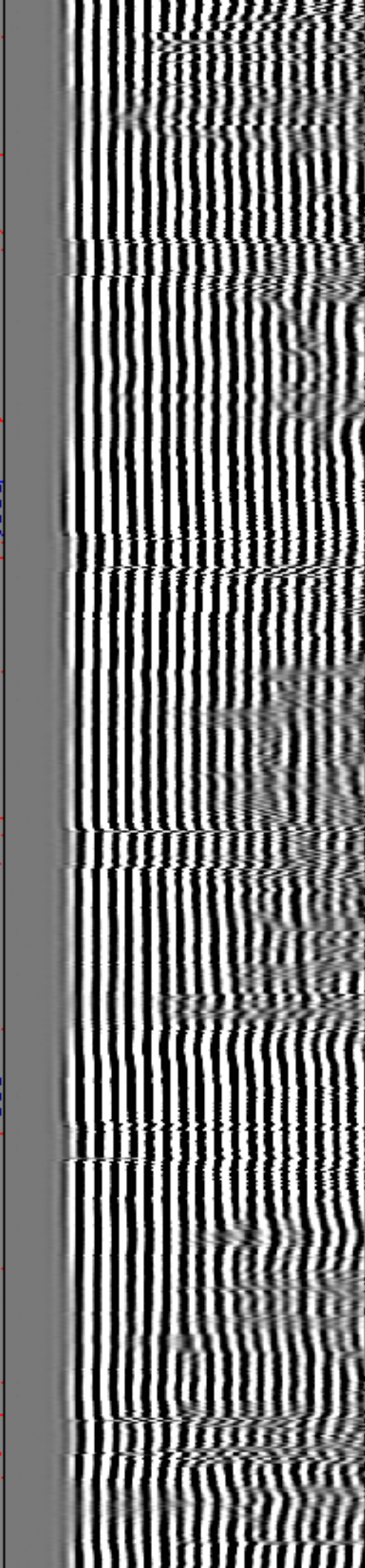
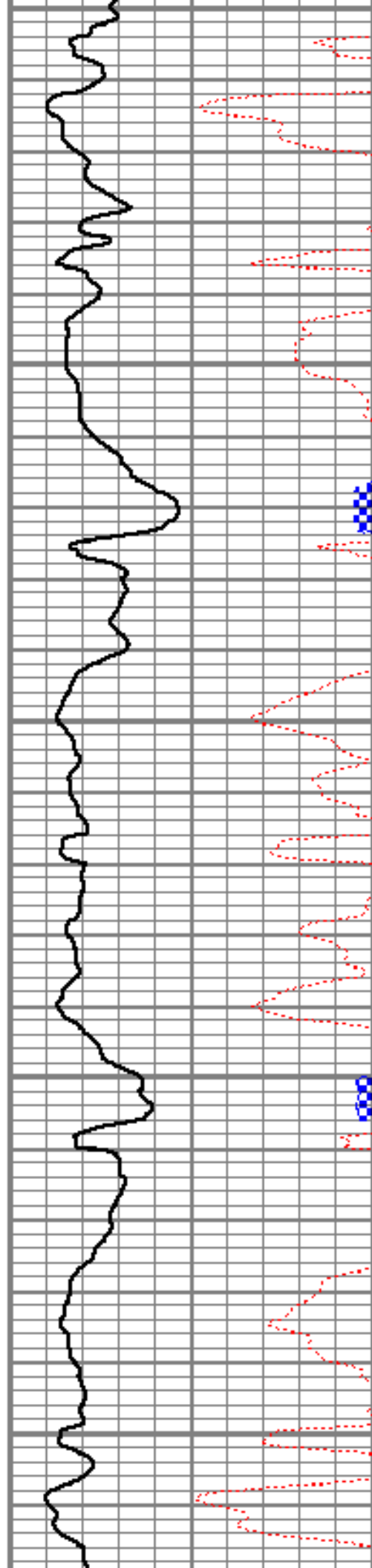
5500

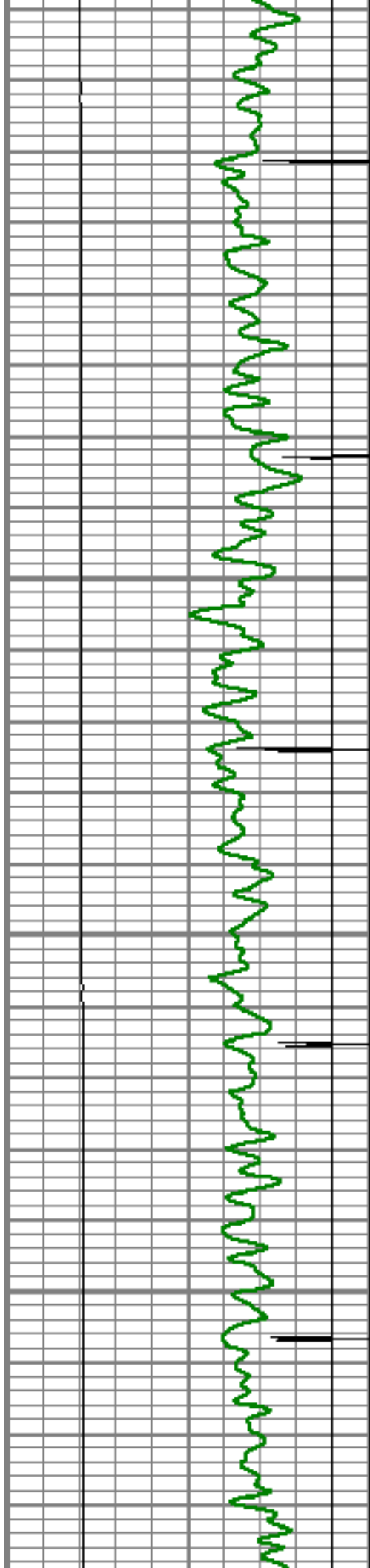
5550

5600

5650

5700



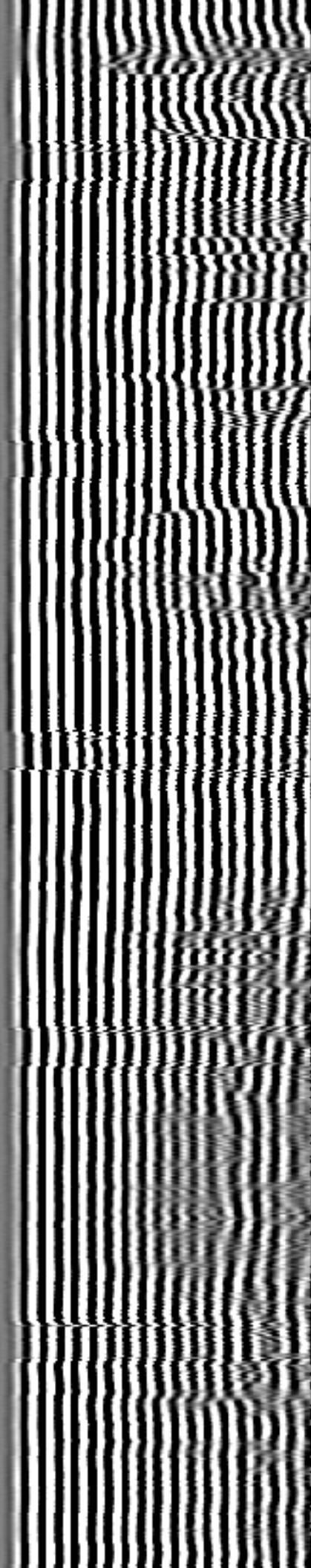
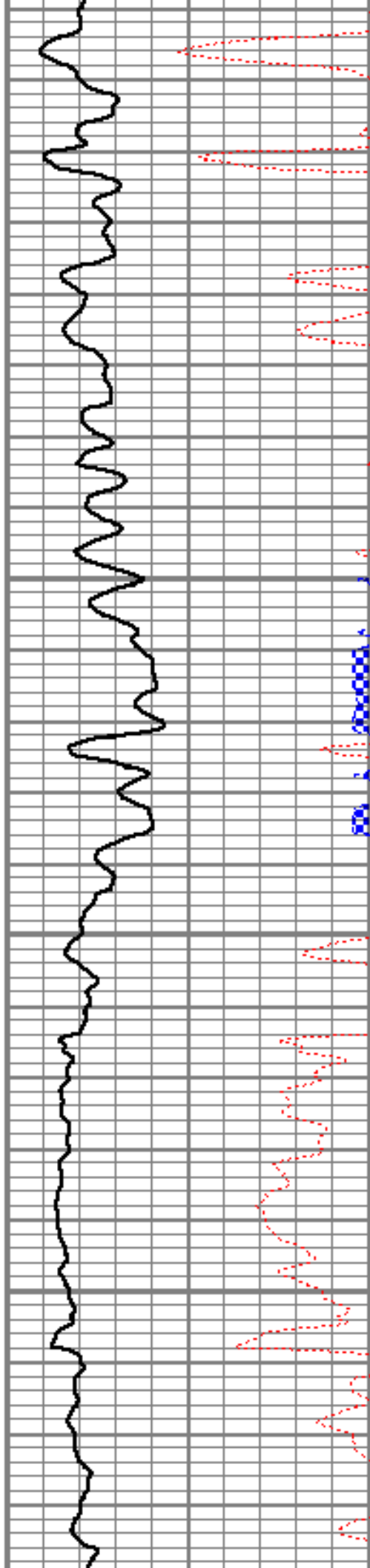


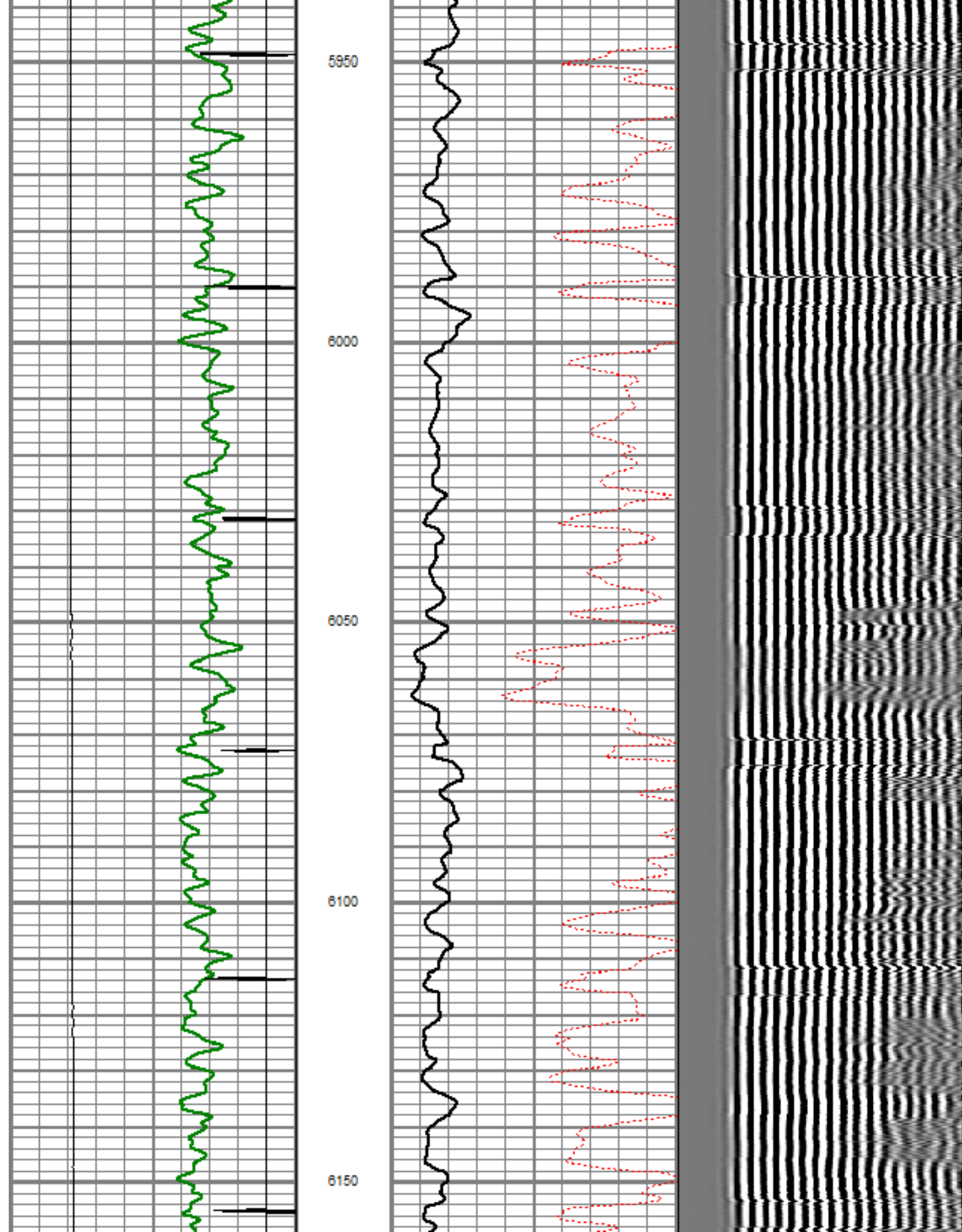
5750

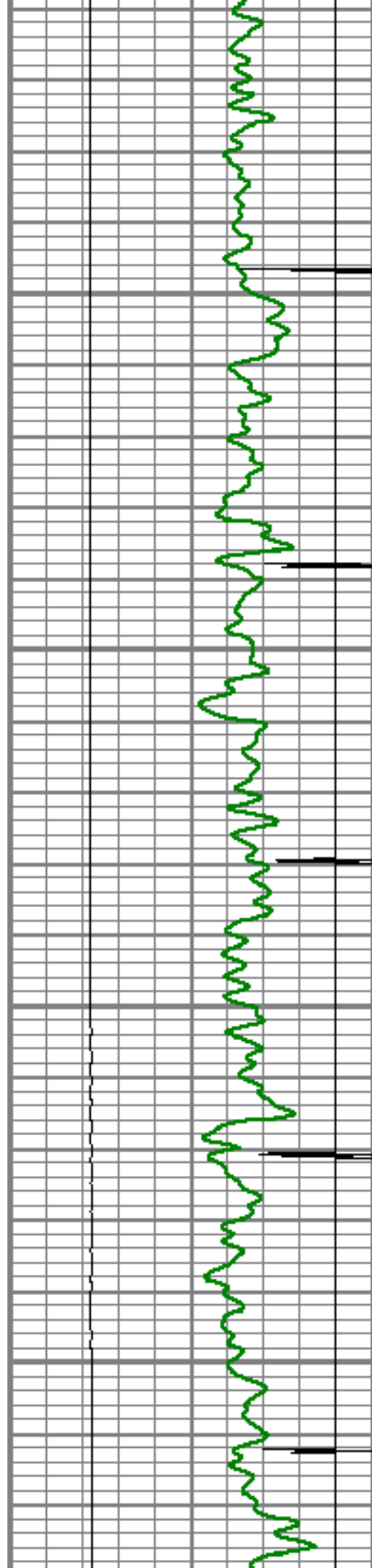
5800

5850

5900





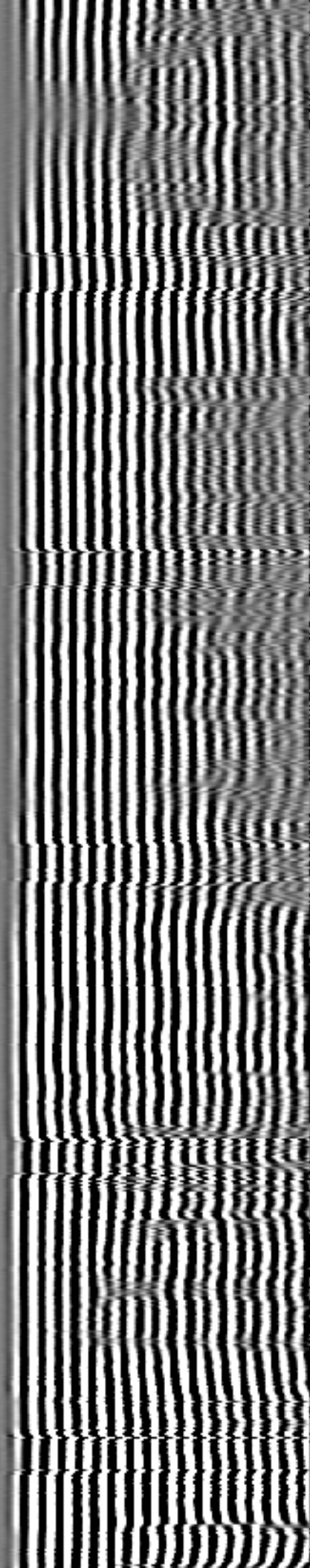
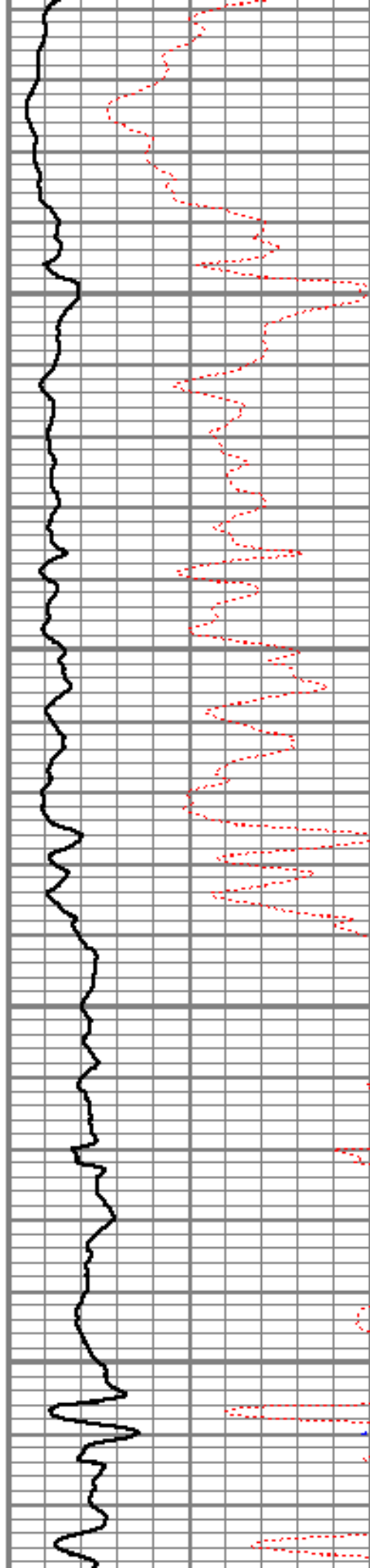


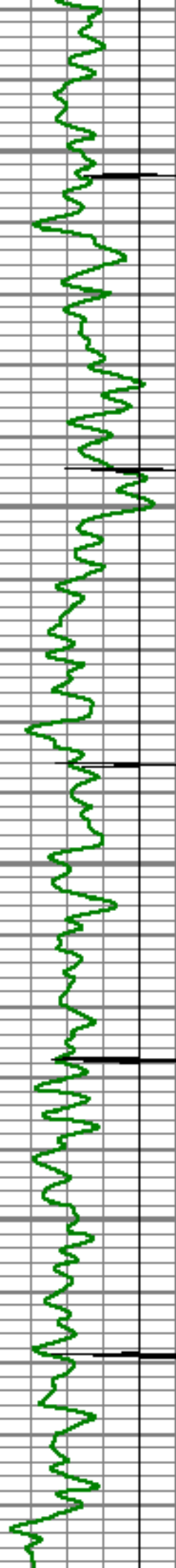
6200

6250

6300

6350



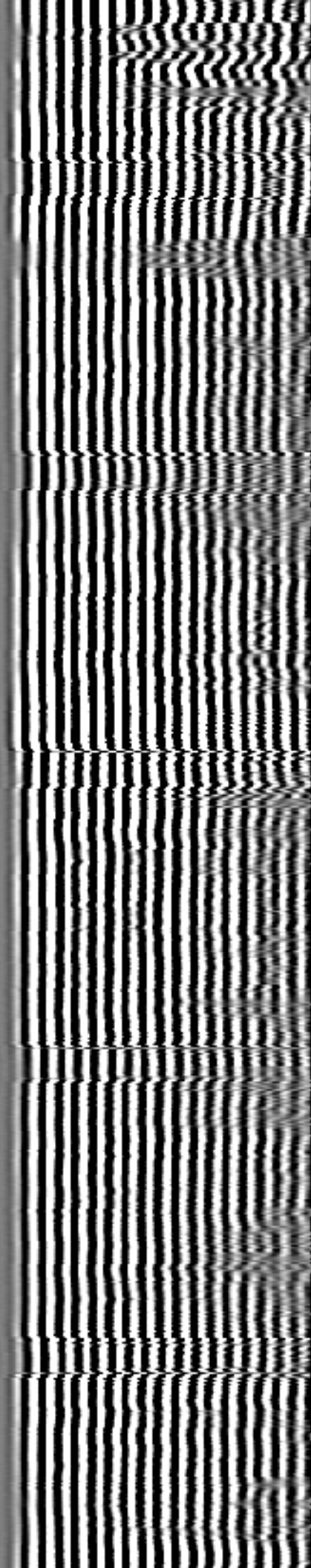
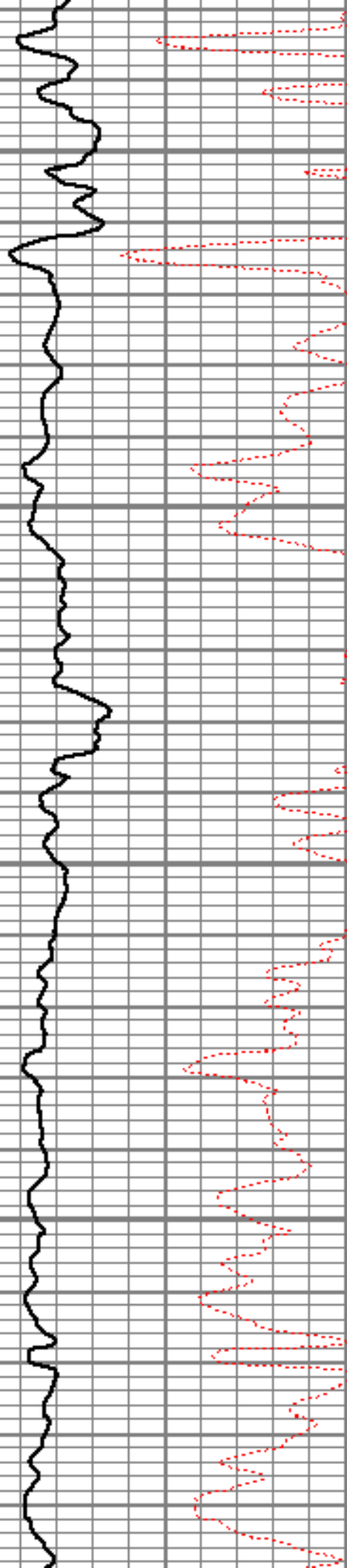


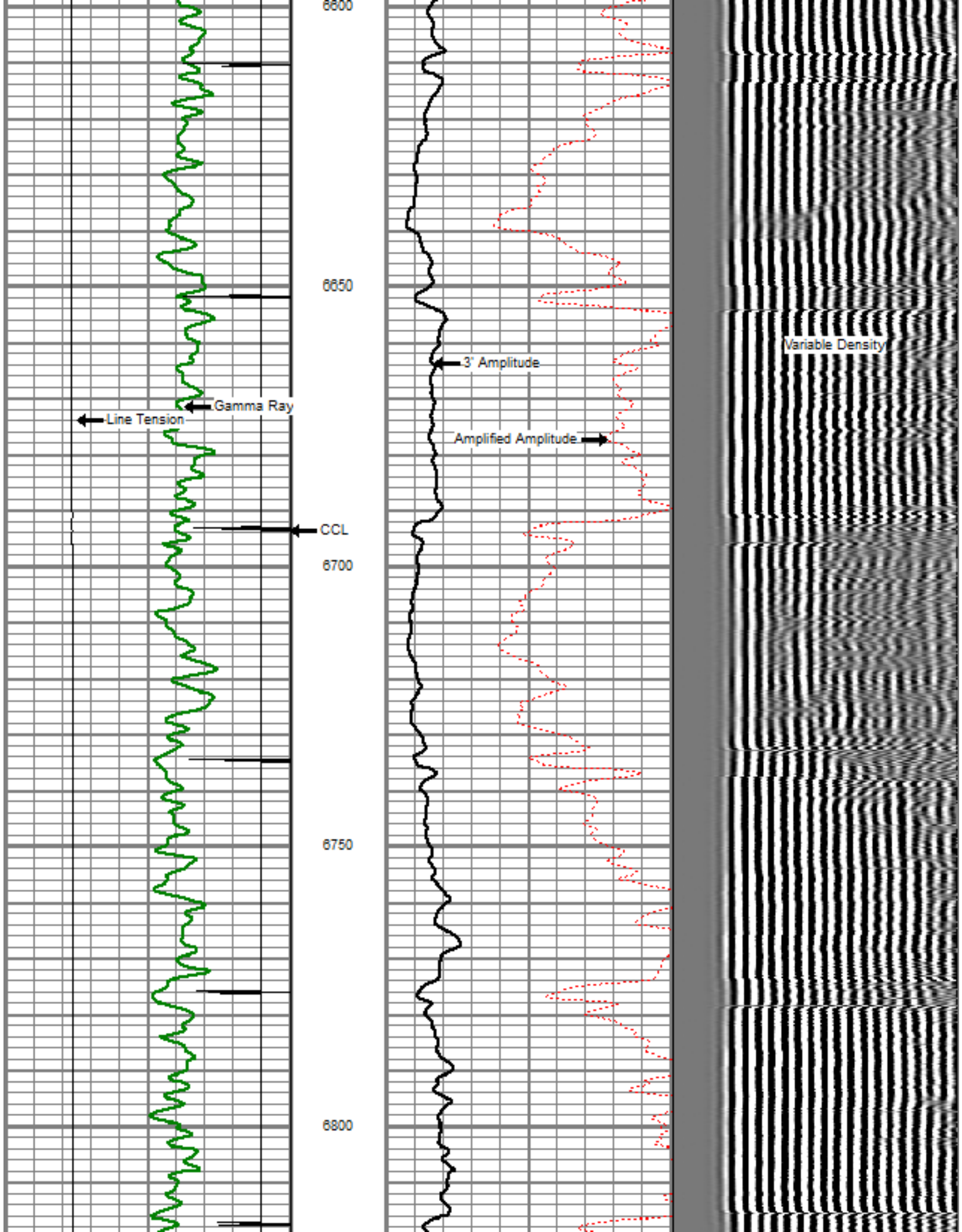
6400

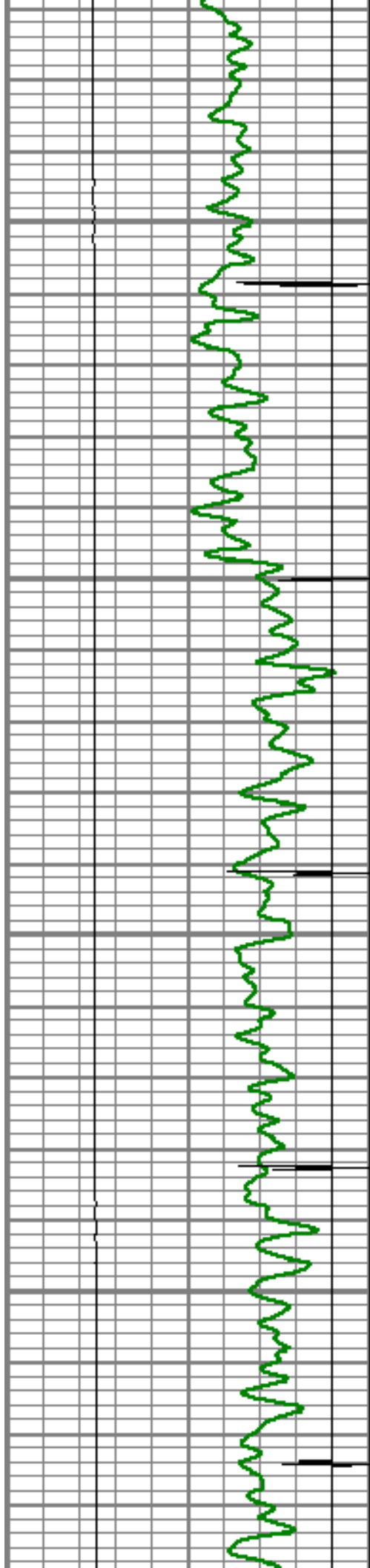
6450

6500

6550





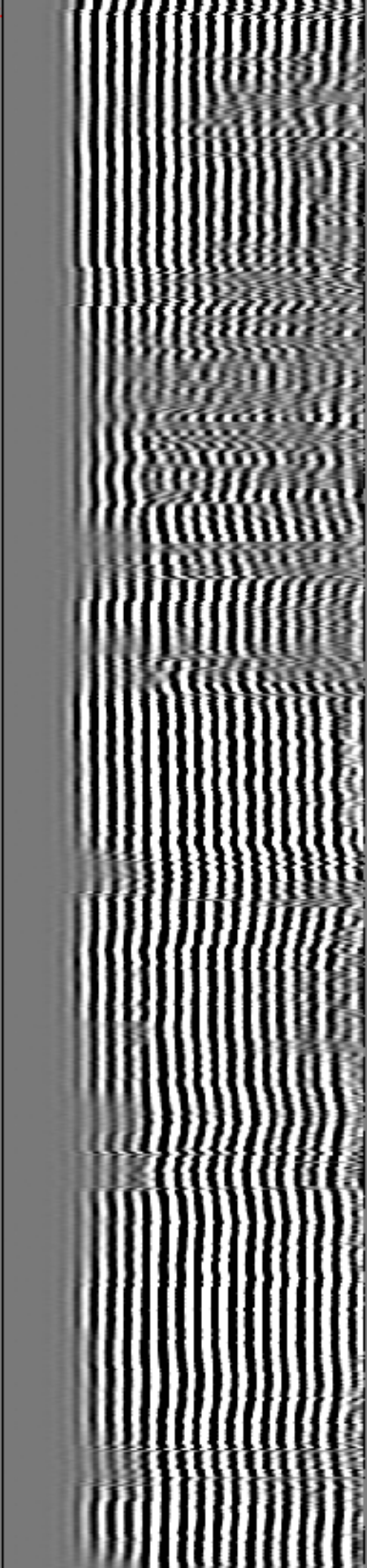
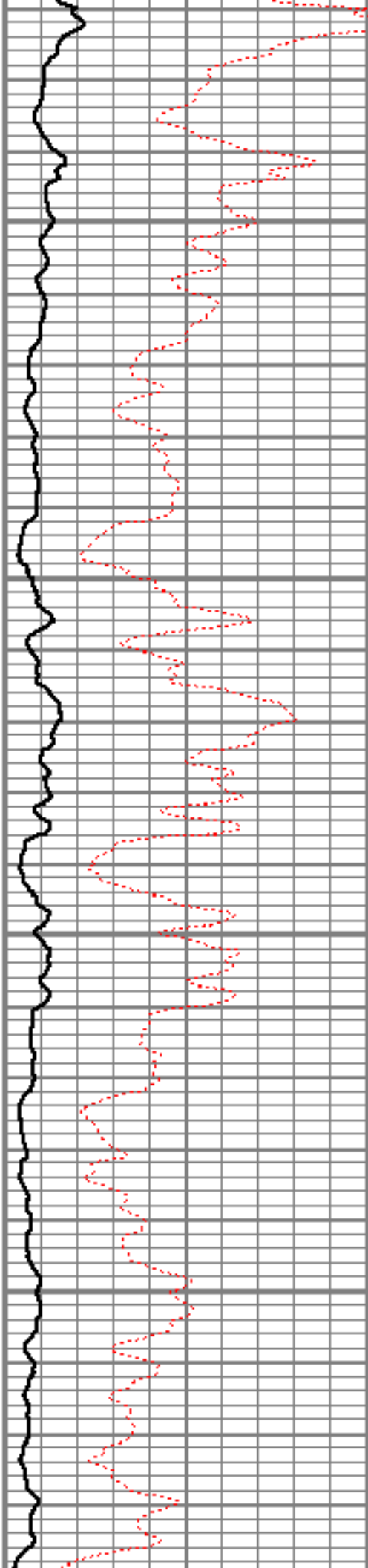


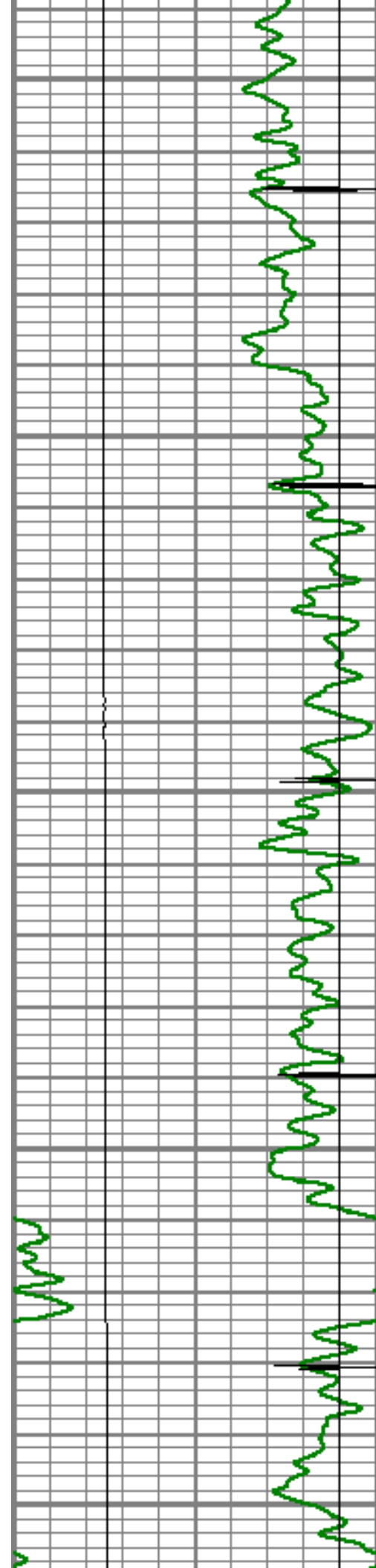
6850

6900

6950

7000





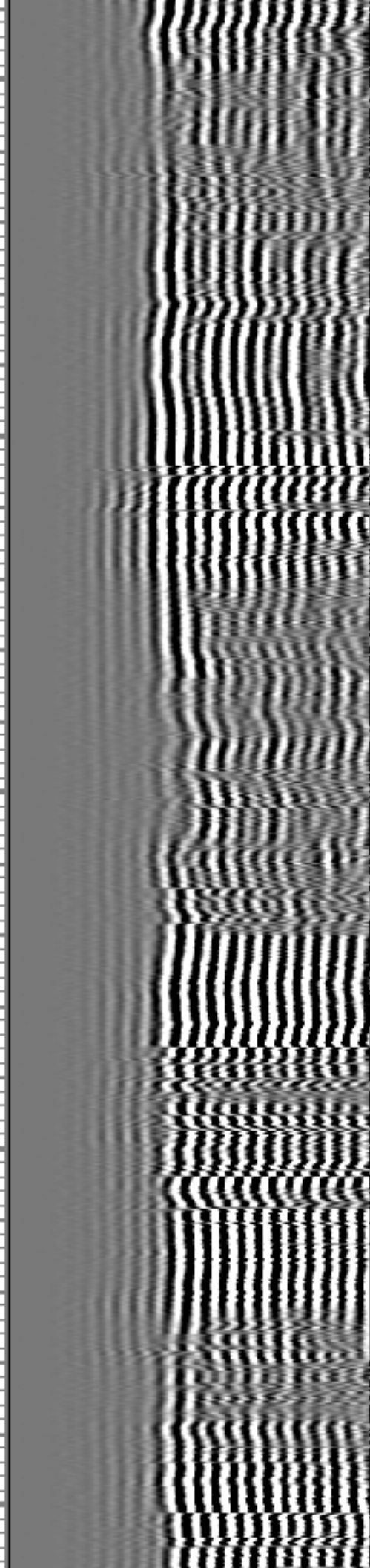
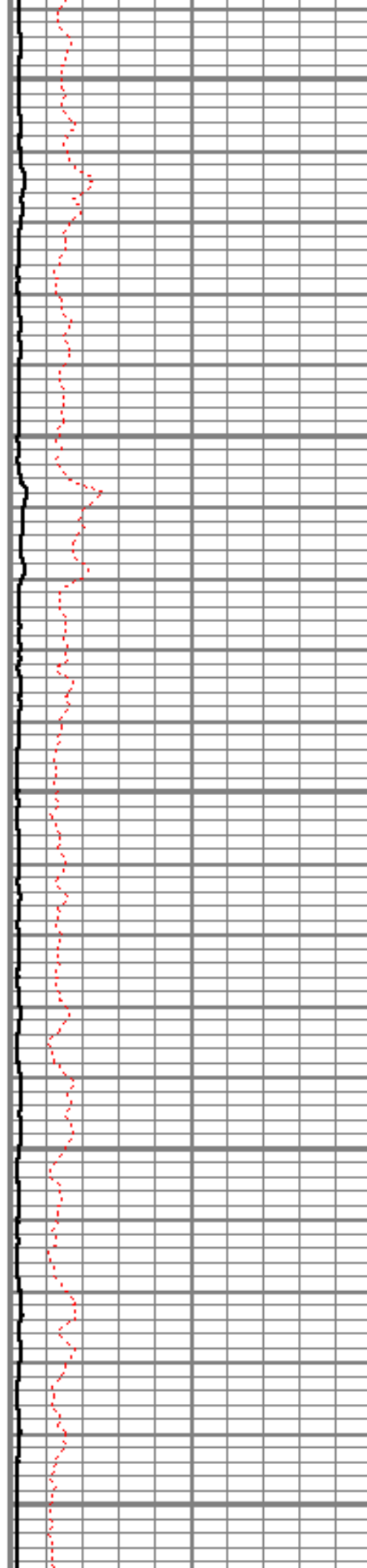
7050

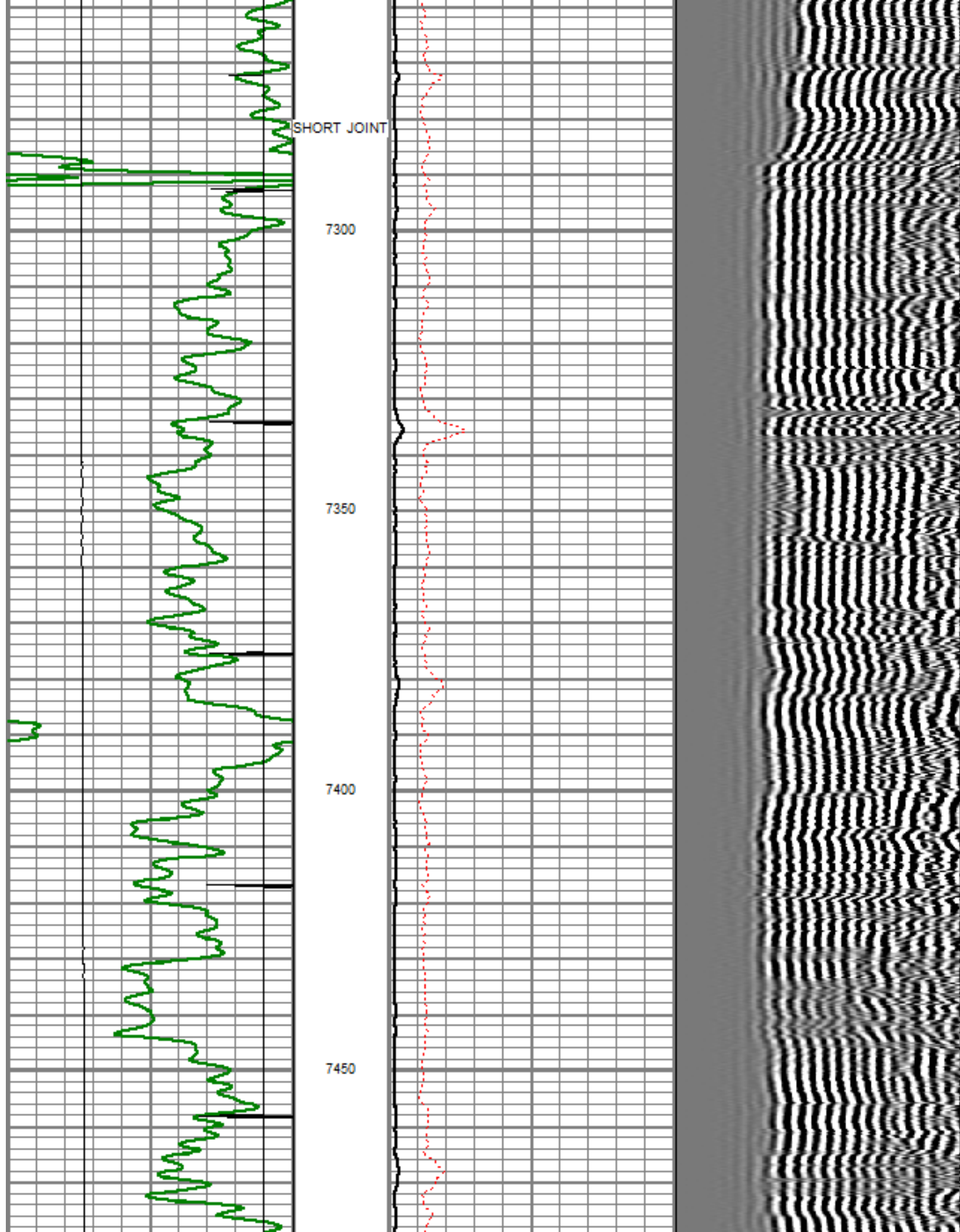
7100

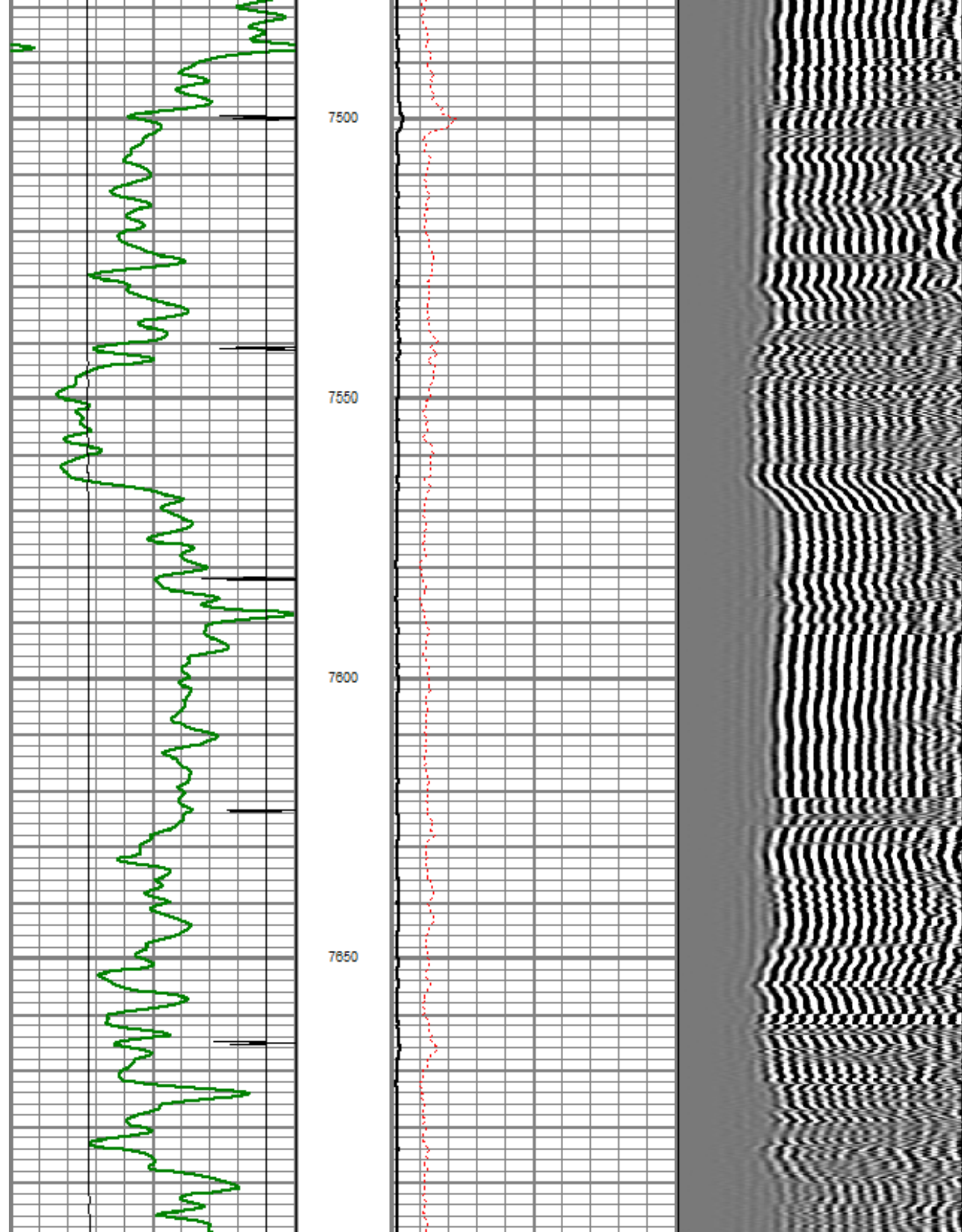
7150

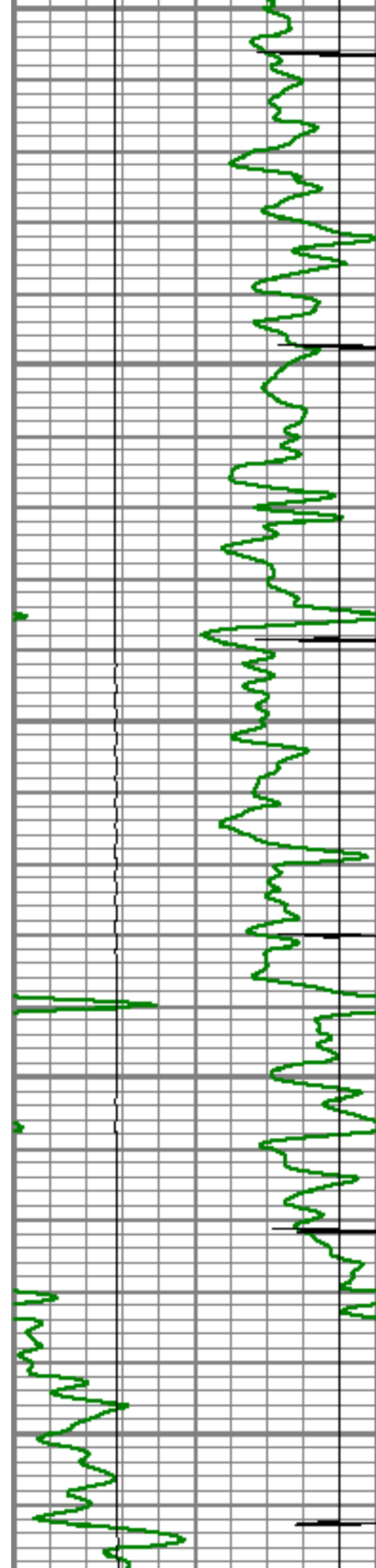
7200

7250









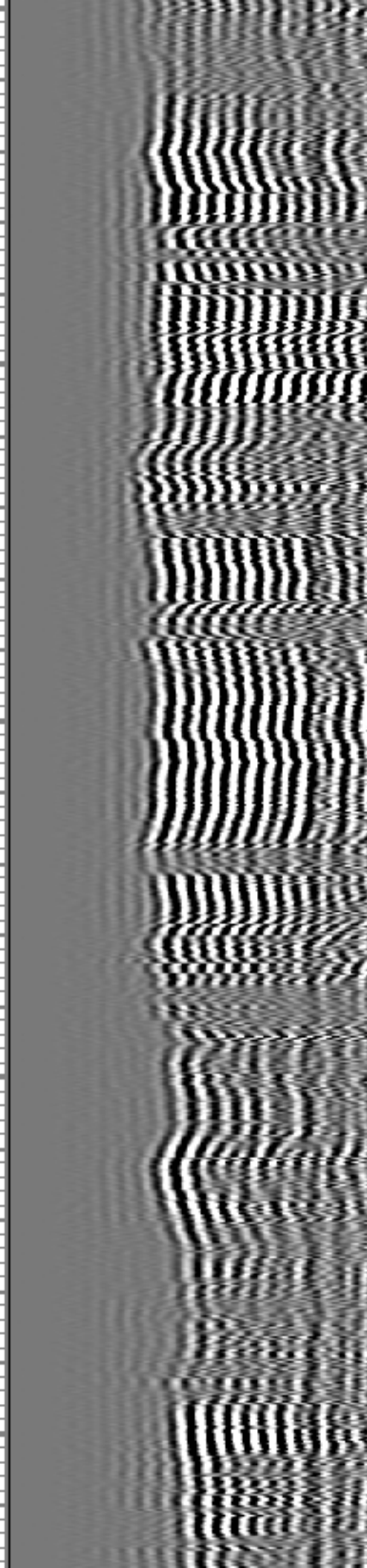
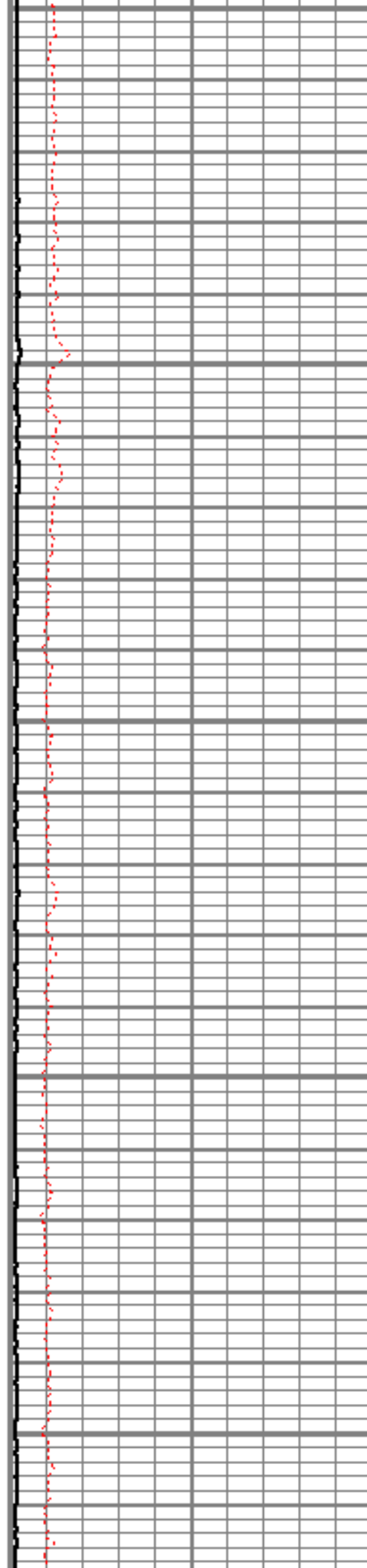
7700

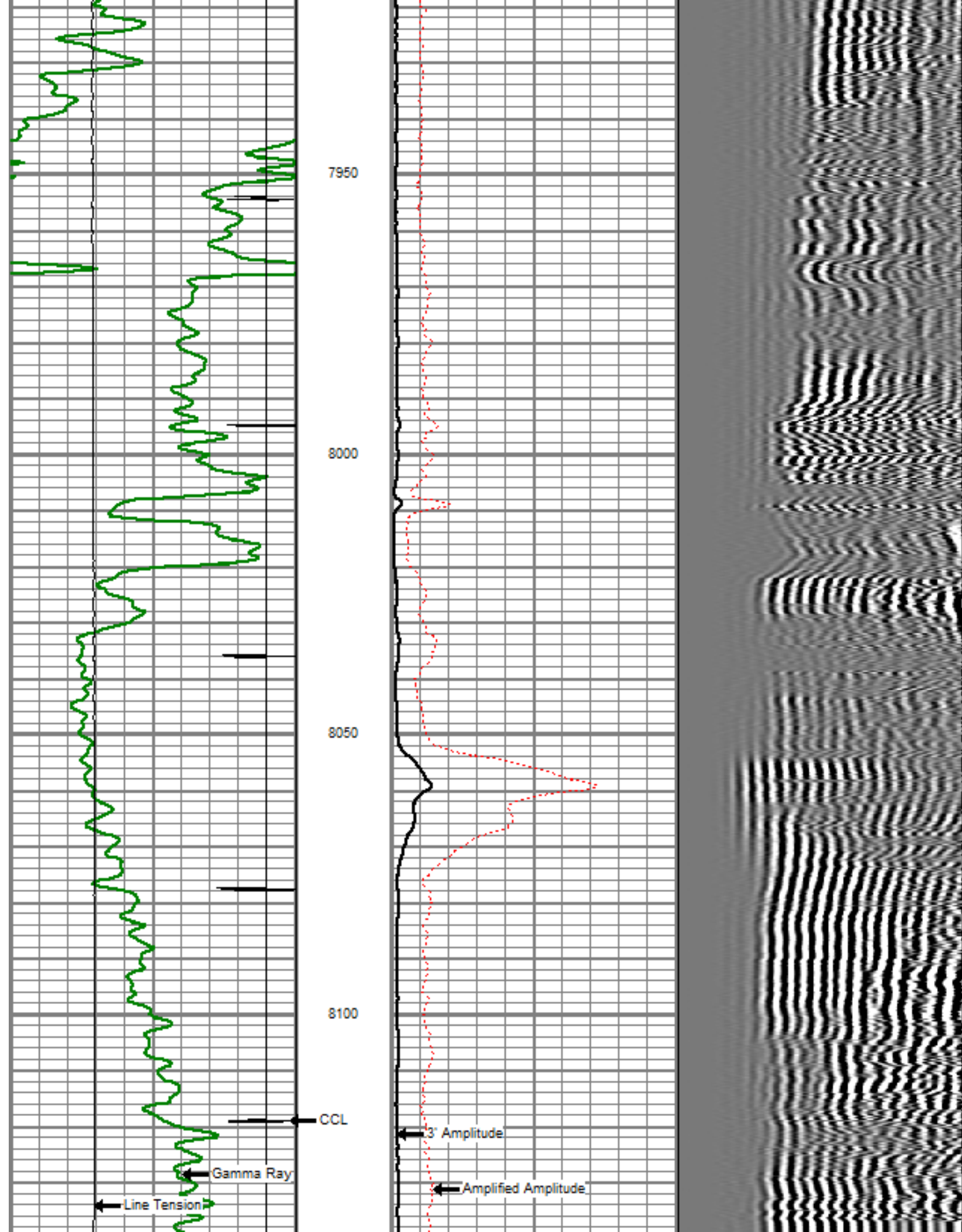
7750

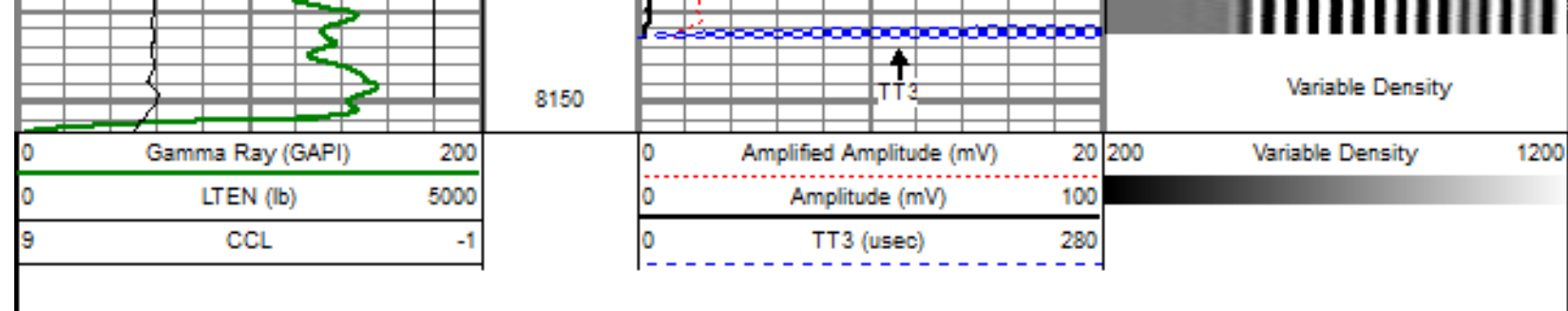
7800

7850

7900







Sensor	Offset (ft)	Schematic	Description	Len (ft)	OD (in)	Wt (lb)
			titan Titan Cable Head Go Pin.	1.02	1.44	1.50
			Centralizer-Probe (CENT-PROBE-1) Probe Bowspring Centralizer	2.88	2.75	10.00
WVF3	14.54		CBL-PRB_CBL_DIGITAL (PRB_CBL_DIG_28.77 1) Probe 2.75" Dual Receiver Bond		2.75	60.00
WVF5	13.54					
			Centralizer-Probe (CENT-PROBE-2) Probe Bowspring Centralizer	2.88	2.75	10.00
CCL	6.50		GR-PROBE_GRCCCL (PRB_GRCCCL_275_01 4.54) Probe 2.75" 4 Channel Pulse		2.75	30.00
GR	3.77					

TEMP	0.17		TEMP-Comprobe (TEMP_CMPRB_1375) Positive pulse Temp tool	0.2.88	1.38	15.00
Dataset: ione 8-2-8.db: field/well/run1/pass4 Total Length: 22.98 ft Total Weight: 128.50 lb O.D. 2.75 in						

	Company Well Field County State	ENCANA OIL & GAS (USA) INC IONE 8-2-8 WATTENBERG WELD COLORADO
--	---	--