

Well Name: **lone 8-0-8**

Surface Location: lone 6-0-8 Pad Sec.8-T2N-R66W  
North American Datum 1983 US State Plane 1983 Colorado Northern Zone

Ground Elevation: 4905.0

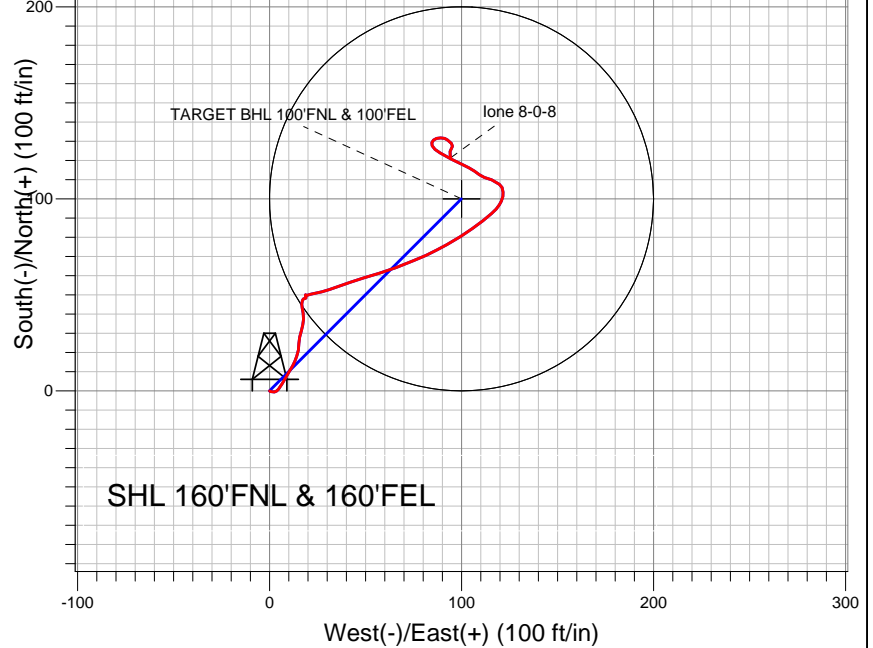
+N/-S	+E/-W	Northing	Easting	Latitude	Longitude
0.0	0.0	1301705.68	3197815.92	40.159410	-104.792240

Original Well Elev WELL @ 4918.0ft (Original Well Elev)

Slot

## EnCana Oil & Gas Weld County CO

Projected BHL 121'N & 94'E of  
surface 79'FNL & 106'FEL



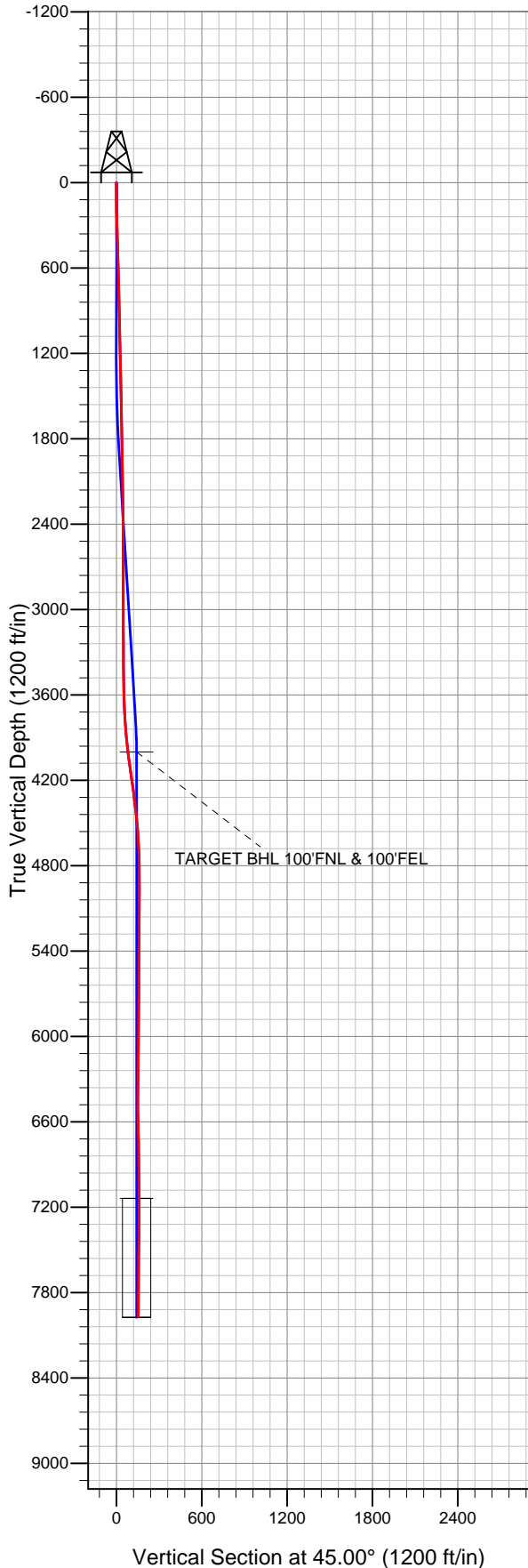
### LEGEND

- ✕ lone 8-0-8, Wellbore #1, Plan #2 (11-30-12) V0
- Wellbore #1
- Survey #1

## Final Survey Plot

Projected Final Survey -  
7976'MD & 7968'TVD @ 152'VS  
0.7 deg Inc 164.9 deg AZ

Project: SEC.8-T2N-R66W  
Site: lone 6-0-8 Pad Sec.8-T2N-R66W  
Well: lone 8-0-8  
Plan: Wellbore #1





## **Directional**

### **EnCana Oil & Gas Weld County CO**

**SEC.8-T2N-R66W**

**lone 6-0-8 Pad Sec.8-T2N-R66W**

**lone 8-0-8**

**Wellbore #1**

**Survey: Survey #1**

### **Standard Survey Report**

**05 December, 2012**

Survey	Wellbore Data									
	Measured Depth (ft)	Inclination (°)	Azimuth (°)	Vertical Depth (ft)	+N/-S (ft)	+E/-W (ft)	Vertical Section (ft)	Dogleg Rate (°/100ft)	Build Rate (°/100ft)	Turn Rate (°/100ft)
Main Wellbore	0.0	0.00	0.00	0.0	0.0	0.0	0.0	0.00	0.00	0.00
	78.0	0.90	127.50	78.0	-0.4	0.5	0.1	1.15	1.15	0.00
	198.0	1.30	79.20	198.0	-0.7	2.6	1.3	0.81	0.33	-40.25
	318.0	1.50	34.50	317.9	0.9	4.8	4.0	0.90	0.17	-37.25
	439.0	1.60	30.80	438.9	3.6	6.6	7.2	0.12	0.08	-3.06
	561.0	1.50	32.00	560.9	6.4	8.3	10.4	0.09	-0.08	0.98
	682.0	1.70	28.00	681.8	9.4	10.0	13.7	0.19	0.17	-3.31
	795.0	1.60	31.10	794.8	12.2	11.6	16.8	0.12	-0.09	2.74
	850.0	1.60	31.00	849.7	13.5	12.4	18.3	0.01	0.00	-0.18
	950.0	1.10	16.60	949.7	15.6	13.3	20.5	0.60	-0.50	-14.40
	1,078.0	1.30	21.70	1,077.7	18.1	14.2	22.9	0.18	0.16	3.98
	1,206.0	1.60	9.00	1,205.6	21.3	15.1	25.7	0.34	0.23	-9.92
	1,335.0	1.50	359.70	1,334.6	24.7	15.3	28.3	0.21	-0.08	-7.21

<b>Company:</b>	EnCana Oil & Gas Weld County CO	<b>Local Co-ordinate Reference:</b>	Well lone 8-0-8
<b>Project:</b>	SEC.8-T2N-R66W	<b>TVD Reference:</b>	WELL @ 4918.0ft (Original Well Elev)
<b>Site:</b>	lone 6-0-8 Pad Sec.8-T2N-R66W	<b>MD Reference:</b>	WELL @ 4918.0ft (Original Well Elev)
<b>Well:</b>	lone 8-0-8	<b>North Reference:</b>	True
<b>Wellbore:</b>	Wellbore #1	<b>Survey Calculation Method:</b>	Minimum Curvature
<b>Design:</b>	Wellbore #1	<b>Database:</b>	Landmark

### Survey

Measured Depth (ft)	Inclination (°)	Azimuth (°)	Vertical Depth (ft)	+N/-S (ft)	+E/-W (ft)	Vertical Section (ft)	Dogleg Rate (°/100ft)	Build Rate (°/100ft)	Turn Rate (°/100ft)
1,463.0	1.40	14.30	1,462.6	27.9	15.7	30.8	0.30	-0.08	11.41
1,592.0	1.50	15.00	1,591.5	31.1	16.5	33.7	0.08	0.08	0.54
1,720.0	1.40	14.10	1,719.5	34.2	17.3	36.5	0.08	-0.08	-0.70
1,848.0	1.30	1.80	1,847.4	37.2	17.8	38.9	0.24	-0.08	-9.61
1,977.0	1.50	349.30	1,976.4	40.3	17.5	40.9	0.28	0.16	-9.69
2,105.0	1.00	351.40	2,104.4	43.1	17.0	42.5	0.39	-0.39	1.64
2,234.0	0.90	1.10	2,233.4	45.2	16.9	43.9	0.15	-0.08	7.52
2,362.0	0.70	19.90	2,361.3	46.9	17.2	45.3	0.26	-0.16	14.69
2,490.0	0.30	44.40	2,489.3	47.9	17.7	46.4	0.35	-0.31	19.14
2,619.0	0.40	93.90	2,618.3	48.1	18.3	47.0	0.24	0.08	38.37
2,747.0	0.20	40.10	2,746.3	48.2	18.9	47.5	0.25	-0.16	-42.03
2,876.0	0.10	340.90	2,875.3	48.5	19.0	47.8	0.13	-0.08	-45.89
3,004.0	0.20	350.60	3,003.3	48.8	19.0	48.0	0.08	0.08	7.58
3,132.0	0.60	342.00	3,131.3	49.7	18.7	48.4	0.32	0.31	-6.72
3,261.0	0.40	135.60	3,260.3	50.0	18.8	48.7	0.76	-0.16	119.07
3,389.0	0.10	142.80	3,388.3	49.6	19.2	48.7	0.24	-0.23	5.63
3,518.0	1.00	70.20	3,517.3	49.9	20.3	49.7	0.76	0.70	-56.28
3,646.0	2.50	79.00	3,645.3	50.8	24.1	53.0	1.19	1.17	6.88
3,774.0	4.00	71.40	3,773.0	52.8	31.1	59.3	1.22	1.17	-5.94
3,903.0	6.40	71.40	3,901.5	56.5	42.2	69.8	1.86	1.86	0.00
4,009.1	7.48	72.77	4,006.9	60.4	54.4	81.2	1.03	1.02	1.29
<b>TARGET BHL 100°FNL &amp; 100°FEL</b>									
4,031.0	7.70	73.00	4,028.5	61.3	57.1	83.7	1.03	1.02	1.07
4,160.0	9.50	67.60	4,156.1	67.9	75.3	101.2	1.53	1.40	-4.19
4,288.0	7.70	60.20	4,282.6	76.2	92.5	119.2	1.65	-1.41	-5.78
4,416.0	6.40	55.10	4,409.7	84.5	105.8	134.5	1.13	-1.02	-3.98
4,545.0	4.90	47.70	4,538.0	92.3	115.7	147.1	1.29	-1.16	-5.74
4,673.0	2.60	20.40	4,665.8	98.7	120.8	155.2	2.23	-1.80	-21.33
4,802.0	1.80	356.20	4,794.7	103.5	121.7	159.2	0.94	-0.62	-18.76
4,973.0	1.50	309.30	4,965.6	107.6	119.8	160.8	0.78	-0.18	-27.43
5,144.0	1.60	290.40	5,136.5	109.8	115.8	159.5	0.30	0.06	-11.05
5,315.0	1.10	288.00	5,307.5	111.2	112.0	157.8	0.29	-0.29	-1.40
5,486.0	0.90	307.80	5,478.5	112.5	109.4	156.9	0.23	-0.12	11.58
5,658.0	1.20	305.60	5,650.4	114.4	106.8	156.4	0.18	0.17	-1.28
5,829.0	1.10	295.70	5,821.4	116.1	103.9	155.6	0.13	-0.06	-5.79
6,000.0	1.80	295.50	5,992.4	118.0	100.0	154.2	0.41	0.41	-0.12
6,171.0	2.00	297.30	6,163.3	120.5	94.9	152.4	0.12	0.12	1.05
6,342.0	2.60	300.10	6,334.1	123.8	88.9	150.4	0.36	0.35	1.64
6,514.0	1.30	337.40	6,506.0	127.6	84.8	150.2	1.02	-0.76	21.69
6,685.0	1.20	49.30	6,677.0	130.6	85.4	152.7	0.86	-0.06	42.05
6,856.0	1.60	90.40	6,847.9	131.7	89.2	156.2	0.62	0.23	24.04
7,027.0	1.10	130.30	7,018.9	130.6	92.8	158.0	0.60	-0.29	23.33
7,145.5	0.82	134.25	7,137.4	129.3	94.3	158.1	0.24	-0.24	3.33
<b>TARGET CIRCLE 100°FNL &amp; 100°FEL</b>									
7,198.0	0.70	137.00	7,189.9	128.8	94.8	158.1	0.24	-0.23	5.24
7,370.0	0.50	191.00	7,361.9	127.3	95.3	157.4	0.33	-0.12	31.40
7,541.0	0.40	222.80	7,532.9	126.1	94.8	156.2	0.15	-0.06	18.60
7,712.0	0.70	195.30	7,703.9	124.7	94.1	154.7	0.23	0.18	-16.08
7,884.0	0.80	163.40	7,875.8	122.5	94.2	153.2	0.25	0.06	-18.55
7,934.0	0.70	164.90	7,925.8	121.9	94.3	152.9	0.20	-0.20	3.00
7,976.0	0.70	164.90	7,967.8	121.4	94.5	152.7	0.00	0.00	0.00

**Company:** EnCana Oil & Gas Weld County CO  
**Project:** SEC.8-T2N-R66W  
**Site:** Ione 6-0-8 Pad Sec.8-T2N-R66W  
**Well:** Ione 8-0-8  
**Wellbore:** Wellbore #1  
**Design:** Wellbore #1

**Local Co-ordinate Reference:** Well Ione 8-0-8  
**TVD Reference:** WELL @ 4918.0ft (Original Well Elev)  
**MD Reference:** WELL @ 4918.0ft (Original Well Elev)  
**North Reference:** True  
**Survey Calculation Method:** Minimum Curvature  
**Database:** Landmark

Checked By: \_\_\_\_\_ Approved By: \_\_\_\_\_ Date: \_\_\_\_\_