

WELL LOCATION PLAT T9N, R58W, 6th P.M.

NOBLE ENERGY, INC.

2010 UELS Alum. Cap,
Flush W/Ground N88°51'20"E - 2639.47' (Meas.)

N88°51'12"E - 2639.55' (Meas.)

2010 UELS Alum.
Cap, 0.5' Below
Ground

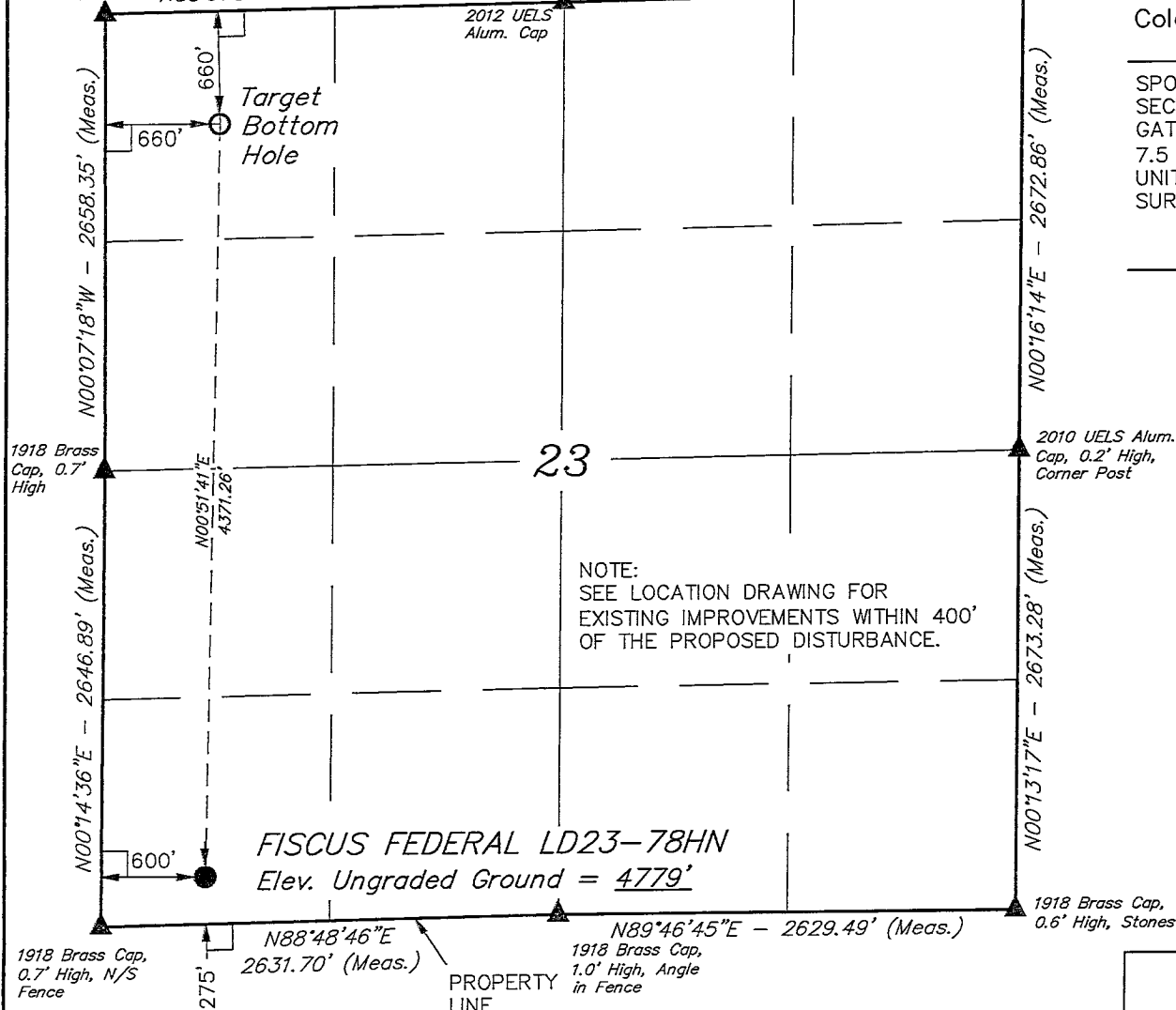
Well location, FISCUS FEDERAL LD23-78HN,
located as shown in the SW 1/4 SW 1/4 of
Section 23, T9N, R58W, 6th P.M., Weld County,
Colorado.

BASIS OF ELEVATION

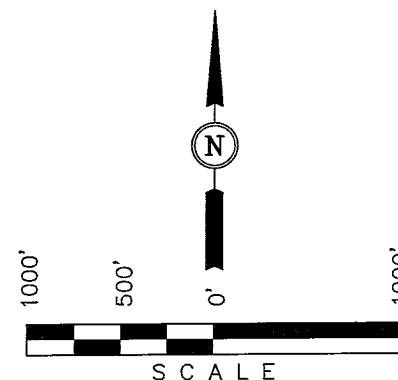
SPOT ELEVATION LOCATED AT THE NORTHEAST CORNER OF
SECTION 15, T9N, R58W, 6th P.M. TAKEN FROM THE
GATEHOOK SPRING, QUADRANGLE, COLORADO, WELD COUNTY,
7.5 MINUTE QUAD (TOPOGRAPHIC MAP) PUBLISHED BY THE
UNITED STATES DEPARTMENT OF THE INTERIOR, GEOLOGICAL
SURVEY. SAID ELEVATION IS MARKED AS BEING 4679 FEET.

BASIS OF BEARINGS

BASIS OF BEARINGS IS A G.P.S. OBSERVATION.



NOTE:
SEE LOCATION DRAWING FOR
EXISTING IMPROVEMENTS WITHIN 400'
OF THE PROPOSED DISTURBANCE.



CERTIFICATE

THIS IS TO CERTIFY THAT THE ABOVE PLAT WAS PREPARED FROM
FIELD NOTES OF ACTUAL SURVEYS MADE BY ME OR UNDER MY
SUPERVISION AND THAT THE SAME ARE TRUE AND CORRECT TO THE
BEST OF MY KNOWLEDGE AND BELIEF.

REGISTERED LAND SURVEYOR
REGISTRATION NO. 17492
STATE OF COLORADO
11-13-12

REVISED: 11-13-12

UINTAH ENGINEERING & LAND SURVEYING
85 SOUTH 200 EAST - VERNAL, UTAH 84078
(435) 789-1017

LEGEND:

- └─┘ = 90° SYMBOL
- = PROPOSED WELL HEAD.
- ▲ = SECTION CORNERS LOCATED.

FEATURE TABLE		
EXISTING FEATURE	DIRECTION	LENGTH
PROPERTY LINE	SOUTH	275'

PDOP = 2.0

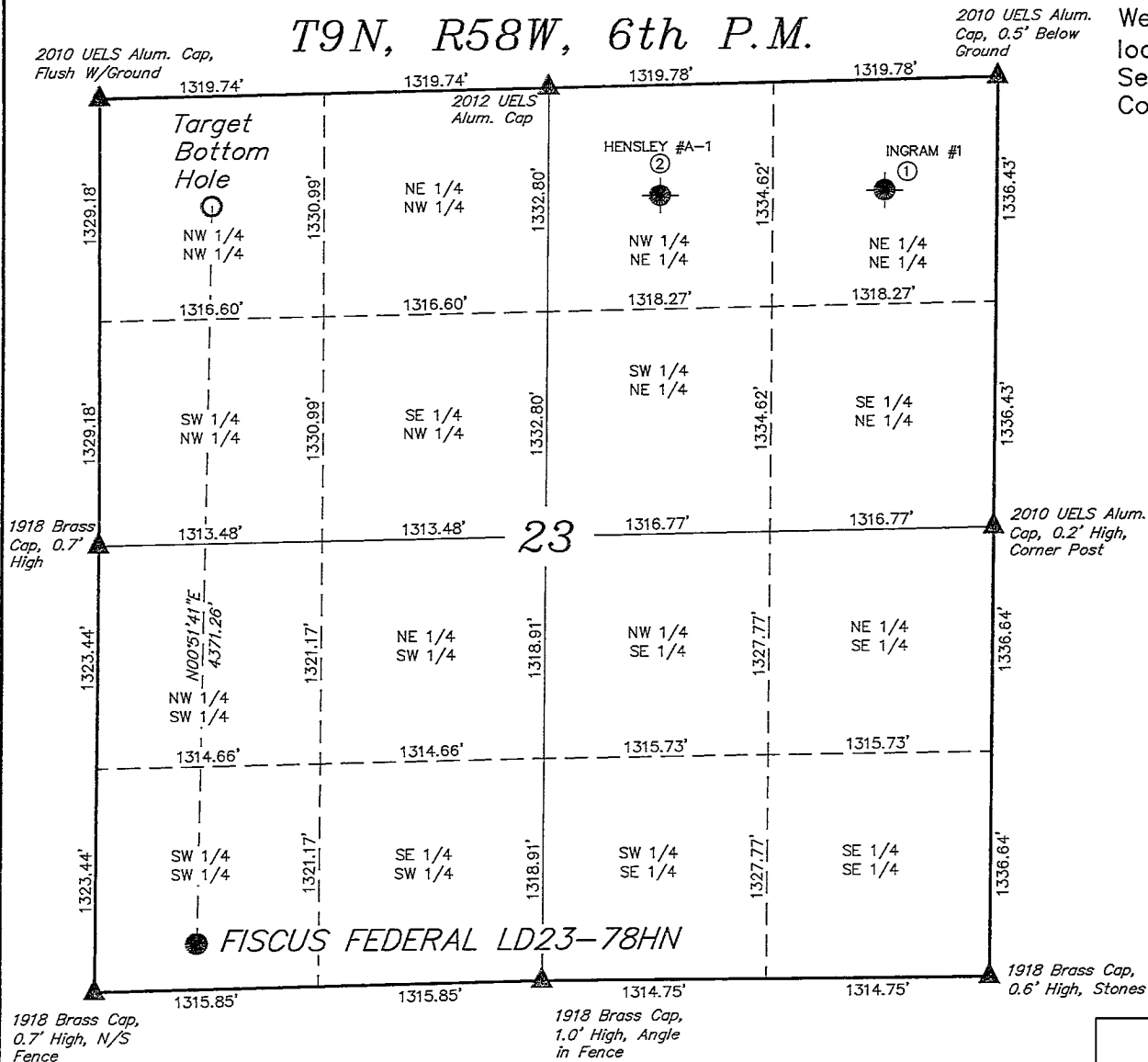
NAD 83 (TARGET BOTTOM HOLE)		NAD 83 (SURFACE LOCATION)	
LATITUDE	= 40°44'32.44" (40.742344)	LATITUDE	= 40°43'49.26" (40.730350)
LONGITUDE	= 103°50'17.12" (103.838089)	LONGITUDE	= 103°50'17.97" (103.838325)

SCALE 1" = 1000'	DATE SURVEYED: 09-20-12	DATE DRAWN: 11-02-12
PARTY DARREN SHANKS K.H. B.D.H.	REFERENCES G.L.O. PLAT	
WEATHER WARM	FILE NOBLE ENERGY, INC.	

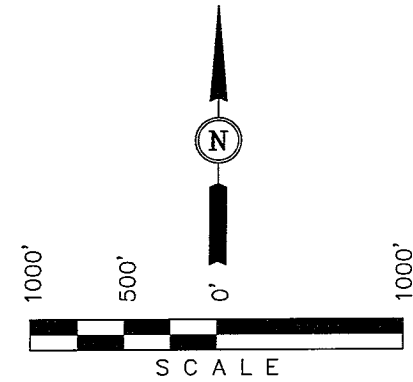
SITE SKETCH

T9N, R58W, 6th P.M.

NOBLE ENERGY, INC.



Well location, FISCUS FEDERAL LD23-78HN, located as shown in the SW 1/4 SW 1/4 of Section 23, T9N, R58W, 6th P.M., Weld County, Colorado.



LEGEND:

- = PROPOSED WELL HEAD.
- = TARGET BOTTOM HOLE.
- ▲ = SECTION CORNERS LOCATED.
- = ABANDONED WELLS

REVISED: 11-13-12

UINTAH ENGINEERING & LAND SURVEYING
85 SOUTH 200 EAST - VERNAL, UTAH 84078
(435) 789-1017

	WELL NAME	QTR-QTR	FOOTAGES	LATITUDE	LONGITUDE	ELEVATION	PDOP
1	INGRAM #1	NE 1/4 NE 1/4	FROM COGCC DATABASE	40.742465°	103.823865°	4,651'	N.A.
2	HENSLEY #A-1	NW 1/4 NE 1/4	FROM COGCC DATABASE	40.742405°	103.828625°	4,653'	N.A.

SCALE 1" = 1000'	DATE SURVEYED: 09-20-12	DATE DRAWN: 11-02-12
PARTY DARREN SHANKS K.H. B.D.H.	REFERENCES G.L.O. PLAT	
WEATHER WARM	FILE NOBLE ENERGY, INC.	