

**ENCANA OIL & GAS (USA) INC. - EBUS  
DO NOT MAIL-3601 N STAGECOACH RD  
LONGMONT, Colorado**

Stelling 3A-4H

Ensign/135

## **Post Job Summary** **Cement Intermediate Casing**

Date Prepared: 6/19/2012  
Version: 1

Service Supervisor: SNYDER, JONATHAN

Submitted by: KENNEDY, HERRON

**HALLIBURTON**

# HALLIBURTON

## ***Wellbore Geometry***

---

Job Tubulars					MD		Shoe Joint Length ft
Type	Description	Size in	ID in	Wt lbm/ft	Top ft	Bottom ft	
Casing	Surface Casing	9.63	8.835	40.00	0.00	1,001.00	
Open Hole Section	Open Hole		8.750		1,001.00	7,507.00	
Casing	Intermediate Casing	7.00	6.276	26.00	0.00	7,497.00	103.00

# HALLIBURTON

## ***Pumping Schedule***

---

Stage /Plug #	Fluid #	Fluid Type	Fluid Name	Surface Density lbm/gal	Surface Volume	Downhole Volume
1	1	Spacer	TUNED SPACER III	9.80	50.0 bbl	50.0 bbl
1	2	Cement Slurry	Tuned Light 10#	10.00	240.0 sacks	240.0 sacks
1	3	Cement Slurry	Varicem 12#	12.00	170.0 sacks	170.0 sacks
1	4	Cement Slurry	Varicem 13#	13.00	215.0 sacks	215.0 sacks
1	5	Spacer	ClayWeb III	8.34		215.0 sacks

# HALLIBURTON

## Service Supervisor Reports

### Job Log

Date/Time	Chart #	Activity Code	Pump Rate	Cum Vol	Pump		Pressure (psig)	Comments
06/15/2012 15:00		Arrive at Location from Service Center						ARRIVED AND CONDUCTED A HAZARD HUNT AND FOUND NO HAZARDS THAT CONFLICT WITH US RIGGING UP EQUIPMENT.
06/16/2012 01:00		Pre-Job Safety Meeting						HELD SAFETY MEETING WITH ALL EMPLOYEES AND ALL THIRD PARTY PERSONEL PRIOR TO PUMPING THE CEMENT JOB.
06/16/2012 01:41		Start Job						
06/16/2012 01:48		Test Lines						PRESSURE TEST LINES TO 3730 PSI
06/16/2012 01:55		Pump Spacer 1	4	50			285.0	TUNED SPACER MIXED @ 9.8 PPG W/ RIG WATER
06/16/2012 02:04		Drop Bottom Plug						PLUG PRELOADED, DROPPED PLUG IN THE LAST 2 BBLs OF TUNED SPACER
06/16/2012 02:05		Pump Cement	6	98			733.0	240 SKS TUNED LIGHT CEMENT MIXED @ 10 PPG W/ RIG WATER
06/16/2012 02:35		Drop Bottom Plug						PLUG PRELOADED, DROPPED PLUG IN THE LAST 2 BBLs OF TUNED LIGHT CEMENT
06/16/2012 02:36		Pump Lead Cement	6	75			600.0	170 SKS VARICEM B1 MIXED @ 12 PPG W/ RIG WATER
06/16/2012 02:53		Pump Tail Cement	6	75			450.0	215 SKS VARICEM B1 MIXED @ 13 PPG W/ RIG WATER
06/16/2012 03:05		Shutdown						
06/16/2012 03:07		Clean Lines						
06/16/2012 03:14		Drop Top Plug						DROPPED PLUG WHILE OPERATOR WAS CLEANING PUMPS AND LINES
06/16/2012 03:15		Pump Displacement	5	285			655.0	MUD SUPPLIED TO US BY THE RIG.
06/16/2012 04:21		Check Floats	3				606.0	THE TOP PLUG DID NOT BUMP SO WE DISPLACED TO MAX DISPLACEMENT AND SHUTDOWN. WE WAITED 3 MINUTES AND THEN CHECKED THE FLOATS AND THEY HELD SO WE ENDED THE JOB. WE GOT 2 BBLs OF CEMENT MIXED W/ TUNED SPACER BACK TO SURFACE.
06/16/2012 04:23		End Job						
06/16/2012 04:57		Pre-Rig Down Safety Meeting						HELD SAFETY MEETING WITH ALL EMPLOYEES PRIOR TO RIGGING DOWN AND DISCUSSED ALL HAZARDS WHILE RIGGING DOWN EQUIPMENT.
06/16/2012 04:57		Depart Location for Service Center or Other Site						HELD SAFETY MEETING PRIOR TO LEAVING LOCATION AND DISCUSSED ALL POTENTIAL HAZARDS WHILE DRIVING BACK TO THE SERVICE CENTER.

## The Road to Excellence Starts with Safety

Sold To #: 340078	Ship To #: 2933006	Quote #:	Sales Order #: 9593760
Customer: ENCANA OIL & GAS (USA) INC. - EBUS		Customer Rep: LAFORCE, BILL	
Well Name: Stelling		Well #: 3A-4H	API/UWI #: 05-123-34764
Field: Wattenberg	City (SAP): HUDSON	County/Parish: Weld	State: Colorado
Contractor: Ensign		Rig/Platform Name/Num: 135	
Job Purpose: Cement Intermediate Casing			
Well Type: Development Well		Job Type: Cement Intermediate Casing	
Sales Person: AARON, WESLEY		Srvc Supervisor: SNYDER, JONATHAN	MBU ID Emp #: 435616

## Job Personnel

HES Emp Name	Exp Hrs	Emp #	HES Emp Name	Exp Hrs	Emp #	HES Emp Name	Exp Hrs	Emp #
BARTOSEK, KEVIN	15.0	516167	KENNEDY, HERRON	15.0	498356	MARKOVICH, STEVEN Michael	15.0	502964
MEADOWS, DANIEL Graham	15.0	500668	SANSONI, NICHOLAS Sterling J	15.0	502962	SMITH, AARON David	15.0	518187
SNYDER, JONATHAN Leroy	15.0	435616	WILEY, JAMES A	15.0	440080			

## Equipment

HES Unit #	Distance-1 way	HES Unit #	Distance-1 way	HES Unit #	Distance-1 way	HES Unit #	Distance-1 way
10867419C	11 mile	10972458	11 mile	11019275C	11 mile	11019824C	11 mile
11338223	11 mile	11488570C	11 mile	11518549	11 mile	11532305	11 mile
11542577	11 mile	11562546C	11 mile	11606994	11 mile	11764052	11 mile

## Job Hours

Date	On Location Hours	Operating Hours	Date	On Location Hours	Operating Hours	Date	On Location Hours	Operating Hours
TOTAL			Total is the sum of each column separately					

## Job

## Job Times

Formation Name					Date	Time	Time Zone
Formation Depth (MD)	Top		Bottom		Called Out	15 - Jun - 2012	11:00 MST
Form Type		BHST			On Location	15 - Jun - 2012	15:00 MST
Job depth MD	7587. ft	Job Depth TVD	7497. ft		Job Started	16 - Jun - 2012	01:41 MST
Water Depth		Wk Ht Above Floor			Job Completed	16 - Jun - 2012	04:23 MST
Perforation Depth (MD)	From		To		Departed Loc	16 - Jun - 2012	06:00 MST

## Well Data

Description	New / Used	Max pressure psig	Size in	ID in	Weight lbm/ft	Thread	Grade	Top MD ft	Bottom MD ft	Top TVD ft	Bottom TVD ft
Open Hole				8.75				1001.	7507.	.	.
Intermediate Casing	Unknown		7.	6.276	26.	Unknown	N-80	.	7497.	.	
Surface Casing	Used		9.625	8.835	40.		N-80	.	1001.		

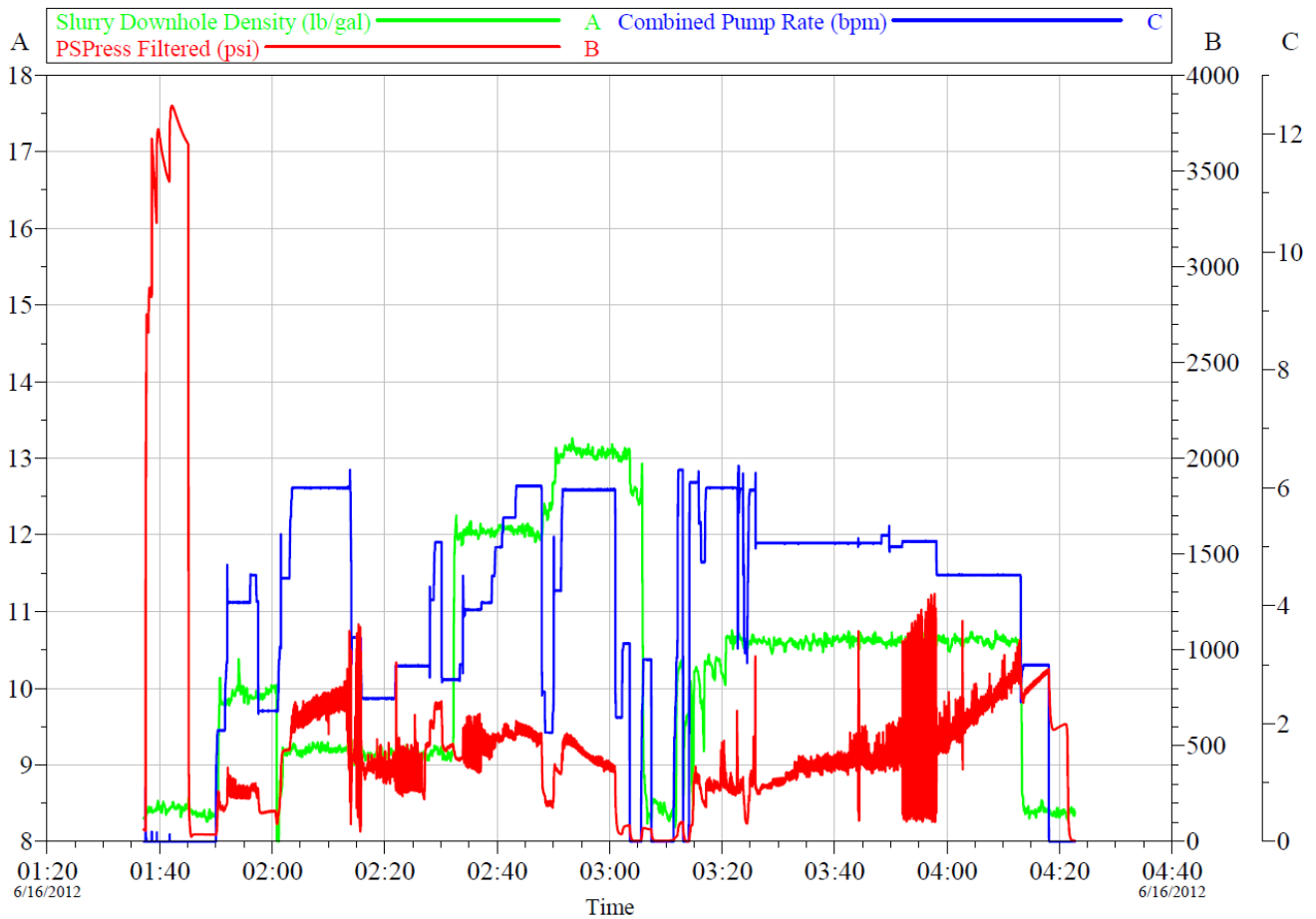
## Tools and Accessories

Type	Size	Qty	Make	Depth	Type	Size	Qty	Make	Depth	Type	Size	Qty	Make
Guide Shoe					Packer					Top Plug			
Float Shoe					Bridge Plug					Bottom Plug			
Float Collar					Retainer					SSR plug set			
Insert Float										Plug Container			
Stage Tool										Centralizers			

Miscellaneous Materials												
Gelling Agt		Conc	Surfactant		Conc	Acid Type		Qty	Conc	%		
Treatment Fld		Conc	Inhibitor		Conc	Sand Type		Size	Qty			
Fluid Data												
Stage/Plug #: 1												
Fluid #	Stage Type	Fluid Name			Qty	Qty uom	Mixing Density lbm/gal	Yield ft <sup>3</sup> /sk	Mix Fluid Gal/sk	Rate bbl/min	Total Mix Fluid Gal/sk	
1	WATER SPACER					bbl	8.34	.0	.0	4.0		
2	TUNED SPACER III	TUNED SPACER III - SBM (483826)			50.00	bbl	9.8	5.78	38.63	4.0		
39.07 gal/bbl		FRESH WATER										
30.27 lbm/bbl		BARITE, 100 LB SK (100003680)										
3	Tuned Light 10#	TUNED LIGHT (TM) SYSTEM (452984)			240.0	sacks	10.	2.29	8.49	4.0	8.49	
8.49 Gal		FRESH WATER										
4	Varicem 12#	VARICEM (TM) CEMENT (452009)			170.0	sacks	12.	2.49	13.92	4.0	13.92	
13.92 Gal		FRESH WATER										
5	Varicem 13#	VARICEM (TM) CEMENT (452009)			215.0	sacks	13.	1.96	11.92	4.0	11.92	
11.92 Gal		FRESH WATER										
6	ClayWeb III					bbl	8.34	.0	.0	.0		
0.2 gal/Mgal		CLA-WEB - TOTE (101985045)										
Calculated Values			Pressures			Volumes						
Displacement		Shut In: Instant			Lost Returns		Cement Slurry		Pad			
Top Of Cement		5 Min			Cement Returns		Actual Displacement		Treatment			
Frac Gradient		15 Min			Spacers		Load and Breakdown		Total Job			
Rates												
Circulating		Mixing			Displacement		Avg. Job					
Cement Left In Pipe		Amount	103 ft	Reason	Shoe Joint							
Frac Ring # 1 @	ID	Frac ring # 2 @	ID	Frac Ring # 3 @	ID	Frac Ring # 4 @	ID					
The Information Stated Herein Is Correct					Customer Representative Signature							

# HALLIBURTON

## Data Acquisition



Customer: Encana  
Well Description: Stelling 3A-4H

Job Date: 16-Jun-2012

Sales Order #: 9593760

OptiCem v6.4.10  
19-Jun-12 19:53