

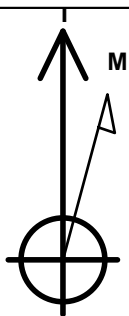
# PETROLEUM DEVELOPMENT CORP Weld County CO

## Well Name: Diana 6T-241

Surface Location: Diana 6T-HZ Pad Sec.6-T6N-R65W  
 North American Datum 1983 , US State Plane 1983 , Colorado Northern Zone  
 Ground Elevation: 4795.0  
 +N/-S +E/-W Northing Easting Latitude Longitude Slot  
 0.0 0.0 1429835.77 3221460.37 40.510570 -104.703530  
 Original Well Elev WELL @ 4810.0ft (Original Well Elev)

## WELLBORE TARGET DETAILS

Name	TVD	+N/-S	+E/-W	Shape
BHL 500'FNL, 257'FSL	7029.0	4539.4	102.9	Point



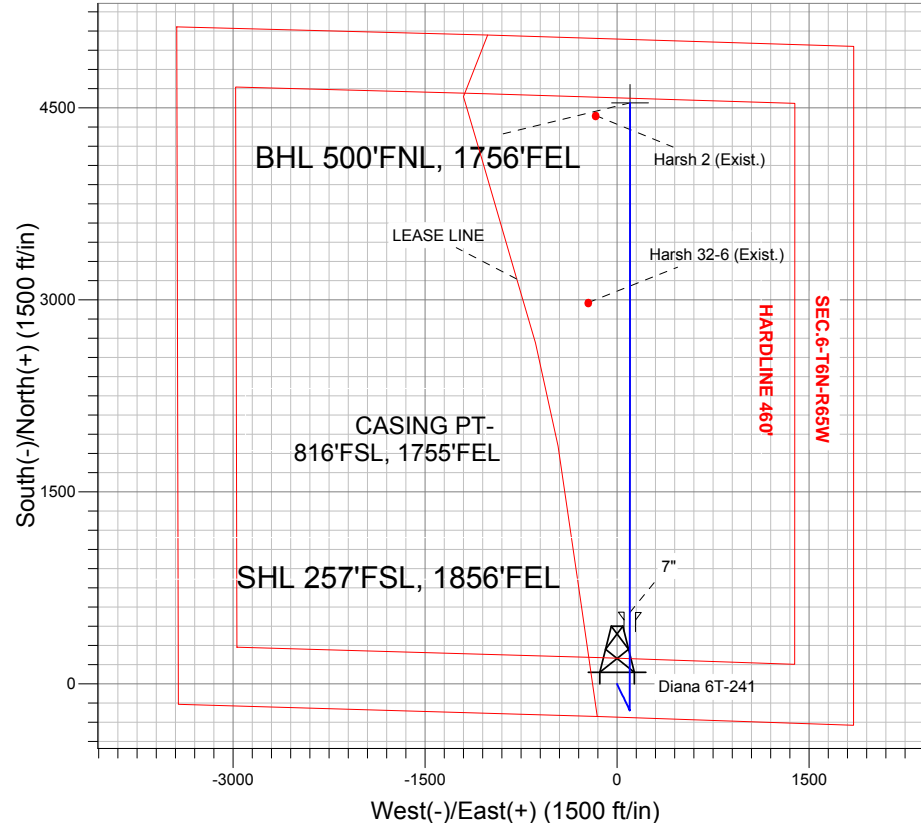
Azimuths to True North  
 Magnetic North: 8.62°

Magnetic Field  
 Strength: 53025.8nT  
 Dip Angle: 67.09°  
 Date: 1/25/2013  
 Model: IGRF2010

## ANNOTATIONS

TVD	MD	Annotation
3000.0	3000.0	KOP #1
6276.2	6288.8	KOP #2
7040.1	7490.9	End of Build

Diana 6T-HZ Pad Sec.6-T6N-R65W  
 Diana 6T-241  
 Plan #1 (1-25-13)  
 14:04, January 25 2013

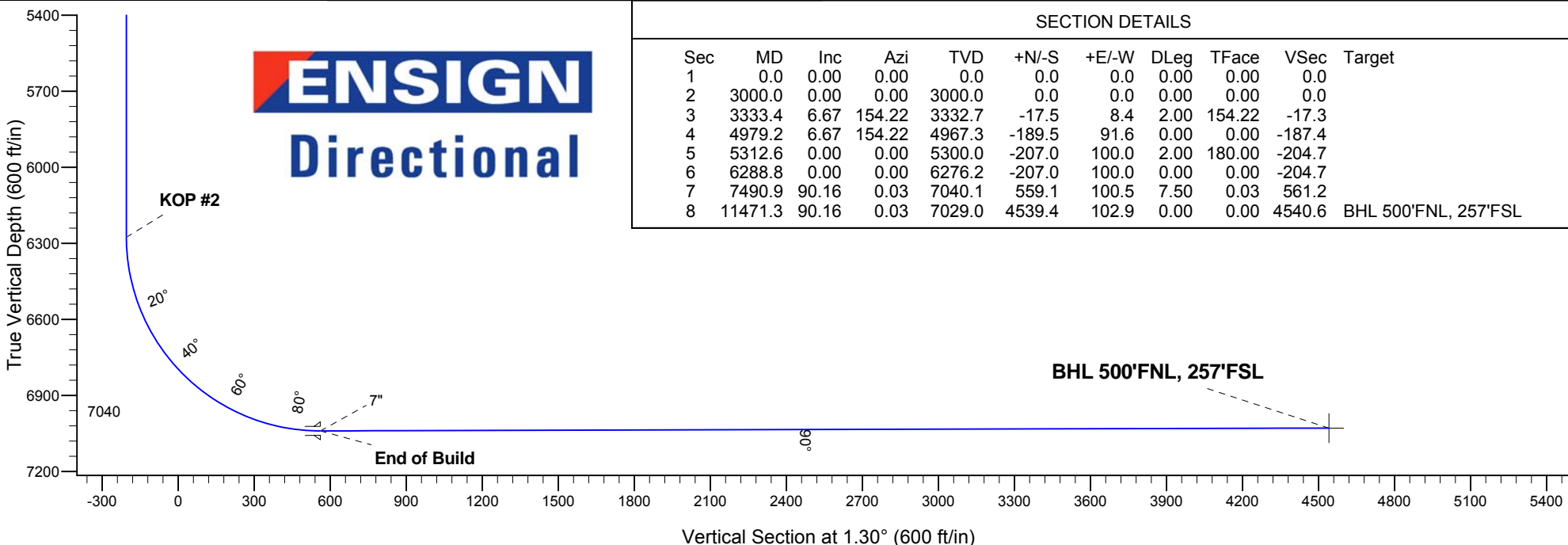


**ENSIGN**  
 Directional

## SECTION DETAILS

Sec	MD	Inc	Azi	TVD	+N/-S	+E/-W	DLeg	TFace	VSec	Target
1	0.0	0.00	0.00	0.0	0.0	0.0	0.00	0.00	0.0	
2	3000.0	0.00	0.00	3000.0	0.0	0.0	0.00	0.00	0.0	
3	3333.4	6.67	154.22	3332.7	-17.5	8.4	2.00	154.22	-17.3	
4	4979.2	6.67	154.22	4967.3	-189.5	91.6	0.00	0.00	-187.4	
5	5312.6	0.00	0.00	5300.0	-207.0	100.0	2.00	180.00	-204.7	
6	6288.8	0.00	0.00	6276.2	-207.0	100.0	0.00	0.00	-204.7	
7	7490.9	90.16	0.03	7040.1	559.1	100.5	7.50	0.03	561.2	
8	11471.3	90.16	0.03	7029.0	4539.4	102.9	0.00	0.00	4540.6	BHL 500'FNL, 257'FSL

BHL 500'FNL, 257'FSL





# **PETROLEUM DEVELOPMENT CORP Weld County CO**

**SEC.6-T6N-R65W**

**Diana 6T-HZ Pad Sec.6-T6N-R65W**

**Diana 6T-241**

**Wellbore #1**

**Plan: Plan #1 (1-25-13)**

## **Standard Planning Report**

**25 January, 2013**

<b>Database:</b>	Landmark	<b>Local Co-ordinate Reference:</b>	Well Diana 6T-241
<b>Company:</b>	PETROLEUM DEVELOPMENT CORP Weld County CO	<b>TVD Reference:</b>	WELL @ 4810.0ft (Original Well Elev)
<b>Project:</b>	SEC.6-T6N-R65W	<b>MD Reference:</b>	WELL @ 4810.0ft (Original Well Elev)
<b>Site:</b>	Diana 6T-HZ Pad Sec.6-T6N-R65W	<b>North Reference:</b>	True
<b>Well:</b>	Diana 6T-241	<b>Survey Calculation Method:</b>	Minimum Curvature
<b>Wellbore:</b>	Wellbore #1		
<b>Design:</b>	Plan #1 (1-25-13)		

<b>Project</b>	SEC.6-T6N-R65W, Weld County, Colorado		
<b>Map System:</b>	US State Plane 1983	<b>System Datum:</b>	Mean Sea Level
<b>Geo Datum:</b>	North American Datum 1983		Using Well Reference Point
<b>Map Zone:</b>	Colorado Northern Zone		Using geodetic scale factor

Diana 6T-HZ Pad Sec.6-T6N-R65W					
Site Position:		Northing:	1,429,839.15 ft	Latitude:	40.510580
From:	Lat/Long	Easting:	3,221,429.75 ft	Longitude:	-104.703640
Position Uncertainty:	0.0 ft	Slot Radius:	"	Grid Convergence:	0.51 °

Well	Diana 6T-241					
Well Position	+N/-S	-3.7 ft	Northing:	1,429,835.77 ft	Latitude:	40.510570
	+E/-W	30.6 ft	Easting:	3,221,460.37 ft	Longitude:	-104.703530
Position Uncertainty		0.0 ft	Wellhead Elevation:	ft	Ground Level:	4,795.0 ft

<b>Wellbore</b>	Wellbore #1				
<b>Magnetics</b>	<b>Model Name</b>	<b>Sample Date</b>	<b>Declination (°)</b>	<b>Dip Angle (°)</b>	<b>Field Strength (nT)</b>
	IGRF2010	1/25/2013	8.62	67.09	53,026

<b>Design</b>	Plan #1 (1-25-13)			
<b>Audit Notes:</b>				
<b>Version:</b>	<b>Phase:</b>	PROTOTYPE	<b>Tie On Depth:</b>	0.0
<b>Vertical Section:</b>	<b>Depth From (TVD) (ft)</b>	<b>+N/-S (ft)</b>	<b>+E/-W (ft)</b>	<b>Direction (°)</b>
	7,029.0	0.0	0.0	1.30

<b>Plan Sections</b>										
Measured Depth (ft)	Inclination (°)	Azimuth (°)	Vertical Depth (ft)	+N/-S (ft)	+E/-W (ft)	Dogleg Rate (°/100ft)	Build Rate (°/100ft)	Turn Rate (°/100ft)	TFO (°)	Target
0.0	0.00	0.00	0.0	0.0	0.0	0.00	0.00	0.00	0.00	
3,000.0	0.00	0.00	3,000.0	0.0	0.0	0.00	0.00	0.00	0.00	
3,333.4	6.67	154.22	3,332.7	-17.5	8.4	2.00	2.00	0.00	154.22	
4,979.2	6.67	154.22	4,967.3	-189.5	91.6	0.00	0.00	0.00	0.00	
5,312.6	0.00	0.00	5,300.0	-207.0	100.0	2.00	-2.00	0.00	180.00	
6,288.8	0.00	0.00	6,276.2	-207.0	100.0	0.00	0.00	0.00	0.00	
7,490.9	90.16	0.03	7,040.1	559.1	100.5	7.50	7.50	0.00	0.03	
11,471.3	90.16	0.03	7,029.0	4,539.4	102.9	0.00	0.00	0.00	0.00	BHL 500'FNL, 1756'F

<b>Database:</b>	Landmark	<b>Local Co-ordinate Reference:</b>	Well Diana 6T-241
<b>Company:</b>	PETROLEUM DEVELOPMENT CORP Weld County CO	<b>TVD Reference:</b>	WELL @ 4810.0ft (Original Well Elev)
<b>Project:</b>	SEC.6-T6N-R65W	<b>MD Reference:</b>	WELL @ 4810.0ft (Original Well Elev)
<b>Site:</b>	Diana 6T-HZ Pad Sec.6-T6N-R65W	<b>North Reference:</b>	True
<b>Well:</b>	Diana 6T-241	<b>Survey Calculation Method:</b>	Minimum Curvature
<b>Wellbore:</b>	Wellbore #1		
<b>Design:</b>	Plan #1 (1-25-13)		

Planned Survey									
Measured Depth (ft)	Inclination (°)	Azimuth (°)	Vertical Depth (ft)	+N-S (ft)	+E-W (ft)	Vertical Section (ft)	Dogleg Rate (°/100ft)	Build Rate (°/100ft)	Turn Rate (°/100ft)
0.0	0.00	0.00	0.0	0.0	0.0	0.0	0.00	0.00	0.00
40.0	0.00	0.00	40.0	0.0	0.0	0.0	0.00	0.00	0.00
80.0	0.00	0.00	80.0	0.0	0.0	0.0	0.00	0.00	0.00
120.0	0.00	0.00	120.0	0.0	0.0	0.0	0.00	0.00	0.00
160.0	0.00	0.00	160.0	0.0	0.0	0.0	0.00	0.00	0.00
200.0	0.00	0.00	200.0	0.0	0.0	0.0	0.00	0.00	0.00
240.0	0.00	0.00	240.0	0.0	0.0	0.0	0.00	0.00	0.00
280.0	0.00	0.00	280.0	0.0	0.0	0.0	0.00	0.00	0.00
320.0	0.00	0.00	320.0	0.0	0.0	0.0	0.00	0.00	0.00
360.0	0.00	0.00	360.0	0.0	0.0	0.0	0.00	0.00	0.00
400.0	0.00	0.00	400.0	0.0	0.0	0.0	0.00	0.00	0.00
440.0	0.00	0.00	440.0	0.0	0.0	0.0	0.00	0.00	0.00
480.0	0.00	0.00	480.0	0.0	0.0	0.0	0.00	0.00	0.00
520.0	0.00	0.00	520.0	0.0	0.0	0.0	0.00	0.00	0.00
560.0	0.00	0.00	560.0	0.0	0.0	0.0	0.00	0.00	0.00
600.0	0.00	0.00	600.0	0.0	0.0	0.0	0.00	0.00	0.00
640.0	0.00	0.00	640.0	0.0	0.0	0.0	0.00	0.00	0.00
680.0	0.00	0.00	680.0	0.0	0.0	0.0	0.00	0.00	0.00
720.0	0.00	0.00	720.0	0.0	0.0	0.0	0.00	0.00	0.00
760.0	0.00	0.00	760.0	0.0	0.0	0.0	0.00	0.00	0.00
800.0	0.00	0.00	800.0	0.0	0.0	0.0	0.00	0.00	0.00
840.0	0.00	0.00	840.0	0.0	0.0	0.0	0.00	0.00	0.00
880.0	0.00	0.00	880.0	0.0	0.0	0.0	0.00	0.00	0.00
920.0	0.00	0.00	920.0	0.0	0.0	0.0	0.00	0.00	0.00
960.0	0.00	0.00	960.0	0.0	0.0	0.0	0.00	0.00	0.00
1,000.0	0.00	0.00	1,000.0	0.0	0.0	0.0	0.00	0.00	0.00
1,040.0	0.00	0.00	1,040.0	0.0	0.0	0.0	0.00	0.00	0.00
1,080.0	0.00	0.00	1,080.0	0.0	0.0	0.0	0.00	0.00	0.00
1,120.0	0.00	0.00	1,120.0	0.0	0.0	0.0	0.00	0.00	0.00
1,160.0	0.00	0.00	1,160.0	0.0	0.0	0.0	0.00	0.00	0.00
1,200.0	0.00	0.00	1,200.0	0.0	0.0	0.0	0.00	0.00	0.00
1,240.0	0.00	0.00	1,240.0	0.0	0.0	0.0	0.00	0.00	0.00
1,280.0	0.00	0.00	1,280.0	0.0	0.0	0.0	0.00	0.00	0.00
1,320.0	0.00	0.00	1,320.0	0.0	0.0	0.0	0.00	0.00	0.00
1,360.0	0.00	0.00	1,360.0	0.0	0.0	0.0	0.00	0.00	0.00
1,400.0	0.00	0.00	1,400.0	0.0	0.0	0.0	0.00	0.00	0.00
1,440.0	0.00	0.00	1,440.0	0.0	0.0	0.0	0.00	0.00	0.00
1,480.0	0.00	0.00	1,480.0	0.0	0.0	0.0	0.00	0.00	0.00
1,520.0	0.00	0.00	1,520.0	0.0	0.0	0.0	0.00	0.00	0.00
1,560.0	0.00	0.00	1,560.0	0.0	0.0	0.0	0.00	0.00	0.00
1,600.0	0.00	0.00	1,600.0	0.0	0.0	0.0	0.00	0.00	0.00
1,640.0	0.00	0.00	1,640.0	0.0	0.0	0.0	0.00	0.00	0.00
1,680.0	0.00	0.00	1,680.0	0.0	0.0	0.0	0.00	0.00	0.00
1,720.0	0.00	0.00	1,720.0	0.0	0.0	0.0	0.00	0.00	0.00
1,760.0	0.00	0.00	1,760.0	0.0	0.0	0.0	0.00	0.00	0.00
1,800.0	0.00	0.00	1,800.0	0.0	0.0	0.0	0.00	0.00	0.00
1,840.0	0.00	0.00	1,840.0	0.0	0.0	0.0	0.00	0.00	0.00
1,880.0	0.00	0.00	1,880.0	0.0	0.0	0.0	0.00	0.00	0.00
1,920.0	0.00	0.00	1,920.0	0.0	0.0	0.0	0.00	0.00	0.00
1,960.0	0.00	0.00	1,960.0	0.0	0.0	0.0	0.00	0.00	0.00
2,000.0	0.00	0.00	2,000.0	0.0	0.0	0.0	0.00	0.00	0.00
2,040.0	0.00	0.00	2,040.0	0.0	0.0	0.0	0.00	0.00	0.00
2,080.0	0.00	0.00	2,080.0	0.0	0.0	0.0	0.00	0.00	0.00

<b>Database:</b>	Landmark	<b>Local Co-ordinate Reference:</b>	Well Diana 6T-241
<b>Company:</b>	PETROLEUM DEVELOPMENT CORP Weld County CO	<b>TVD Reference:</b>	WELL @ 4810.0ft (Original Well Elev)
<b>Project:</b>	SEC.6-T6N-R65W	<b>MD Reference:</b>	WELL @ 4810.0ft (Original Well Elev)
<b>Site:</b>	Diana 6T-HZ Pad Sec.6-T6N-R65W	<b>North Reference:</b>	True
<b>Well:</b>	Diana 6T-241	<b>Survey Calculation Method:</b>	Minimum Curvature
<b>Wellbore:</b>	Wellbore #1		
<b>Design:</b>	Plan #1 (1-25-13)		

Planned Survey									
Measured Depth (ft)	Inclination (°)	Azimuth (°)	Vertical Depth (ft)	+N-S (ft)	+E-W (ft)	Vertical Section (ft)	Dogleg Rate (°/100ft)	Build Rate (°/100ft)	Turn Rate (°/100ft)
2,120.0	0.00	0.00	2,120.0	0.0	0.0	0.0	0.00	0.00	0.00
2,160.0	0.00	0.00	2,160.0	0.0	0.0	0.0	0.00	0.00	0.00
2,200.0	0.00	0.00	2,200.0	0.0	0.0	0.0	0.00	0.00	0.00
2,240.0	0.00	0.00	2,240.0	0.0	0.0	0.0	0.00	0.00	0.00
2,280.0	0.00	0.00	2,280.0	0.0	0.0	0.0	0.00	0.00	0.00
2,320.0	0.00	0.00	2,320.0	0.0	0.0	0.0	0.00	0.00	0.00
2,360.0	0.00	0.00	2,360.0	0.0	0.0	0.0	0.00	0.00	0.00
2,400.0	0.00	0.00	2,400.0	0.0	0.0	0.0	0.00	0.00	0.00
2,440.0	0.00	0.00	2,440.0	0.0	0.0	0.0	0.00	0.00	0.00
2,480.0	0.00	0.00	2,480.0	0.0	0.0	0.0	0.00	0.00	0.00
2,520.0	0.00	0.00	2,520.0	0.0	0.0	0.0	0.00	0.00	0.00
2,560.0	0.00	0.00	2,560.0	0.0	0.0	0.0	0.00	0.00	0.00
2,600.0	0.00	0.00	2,600.0	0.0	0.0	0.0	0.00	0.00	0.00
2,640.0	0.00	0.00	2,640.0	0.0	0.0	0.0	0.00	0.00	0.00
2,680.0	0.00	0.00	2,680.0	0.0	0.0	0.0	0.00	0.00	0.00
2,720.0	0.00	0.00	2,720.0	0.0	0.0	0.0	0.00	0.00	0.00
2,760.0	0.00	0.00	2,760.0	0.0	0.0	0.0	0.00	0.00	0.00
2,800.0	0.00	0.00	2,800.0	0.0	0.0	0.0	0.00	0.00	0.00
2,840.0	0.00	0.00	2,840.0	0.0	0.0	0.0	0.00	0.00	0.00
2,880.0	0.00	0.00	2,880.0	0.0	0.0	0.0	0.00	0.00	0.00
2,920.0	0.00	0.00	2,920.0	0.0	0.0	0.0	0.00	0.00	0.00
2,960.0	0.00	0.00	2,960.0	0.0	0.0	0.0	0.00	0.00	0.00
3,000.0	0.00	0.00	3,000.0	0.0	0.0	0.0	0.00	0.00	0.00
3,040.0	0.80	154.22	3,040.0	-0.3	0.1	-0.2	2.00	2.00	0.00
3,080.0	1.60	154.22	3,080.0	-1.0	0.5	-1.0	2.00	2.00	0.00
3,120.0	2.40	154.22	3,120.0	-2.3	1.1	-2.2	2.00	2.00	0.00
3,160.0	3.20	154.22	3,159.9	-4.0	1.9	-4.0	2.00	2.00	0.00
3,200.0	4.00	154.22	3,199.8	-6.3	3.0	-6.2	2.00	2.00	0.00
3,240.0	4.80	154.22	3,239.7	-9.0	4.4	-8.9	2.00	2.00	0.00
3,280.0	5.60	154.22	3,279.6	-12.3	5.9	-12.2	2.00	2.00	0.00
3,320.0	6.40	154.22	3,319.3	-16.1	7.8	-15.9	2.00	2.00	0.00
3,333.4	6.67	154.22	3,332.7	-17.5	8.4	-17.3	2.00	2.00	0.00
3,360.0	6.67	154.22	3,359.1	-20.2	9.8	-20.0	0.00	0.00	0.00
3,400.0	6.67	154.22	3,398.8	-24.4	11.8	-24.1	0.00	0.00	0.00
3,440.0	6.67	154.22	3,438.5	-28.6	13.8	-28.3	0.00	0.00	0.00
3,480.0	6.67	154.22	3,478.3	-32.8	15.8	-32.4	0.00	0.00	0.00
3,520.0	6.67	154.22	3,518.0	-37.0	17.9	-36.5	0.00	0.00	0.00
3,560.0	6.67	154.22	3,557.7	-41.1	19.9	-40.7	0.00	0.00	0.00
3,600.0	6.67	154.22	3,597.4	-45.3	21.9	-44.8	0.00	0.00	0.00
3,640.0	6.67	154.22	3,637.2	-49.5	23.9	-49.0	0.00	0.00	0.00
3,680.0	6.67	154.22	3,676.9	-53.7	25.9	-53.1	0.00	0.00	0.00
3,720.0	6.67	154.22	3,716.6	-57.9	28.0	-57.2	0.00	0.00	0.00
3,760.0	6.67	154.22	3,756.4	-62.1	30.0	-61.4	0.00	0.00	0.00
3,800.0	6.67	154.22	3,796.1	-66.2	32.0	-65.5	0.00	0.00	0.00
3,840.0	6.67	154.22	3,835.8	-70.4	34.0	-69.6	0.00	0.00	0.00
3,880.0	6.67	154.22	3,875.5	-74.6	36.0	-73.8	0.00	0.00	0.00
3,920.0	6.67	154.22	3,915.3	-78.8	38.1	-77.9	0.00	0.00	0.00
3,960.0	6.67	154.22	3,955.0	-83.0	40.1	-82.0	0.00	0.00	0.00
4,000.0	6.67	154.22	3,994.7	-87.2	42.1	-86.2	0.00	0.00	0.00
4,040.0	6.67	154.22	4,034.5	-91.3	44.1	-90.3	0.00	0.00	0.00
4,080.0	6.67	154.22	4,074.2	-95.5	46.1	-94.4	0.00	0.00	0.00
4,120.0	6.67	154.22	4,113.9	-99.7	48.2	-98.6	0.00	0.00	0.00
4,160.0	6.67	154.22	4,153.7	-103.9	50.2	-102.7	0.00	0.00	0.00

<b>Database:</b>	Landmark	<b>Local Co-ordinate Reference:</b>	Well Diana 6T-241
<b>Company:</b>	PETROLEUM DEVELOPMENT CORP Weld County CO	<b>TVD Reference:</b>	WELL @ 4810.0ft (Original Well Elev)
<b>Project:</b>	SEC.6-T6N-R65W	<b>MD Reference:</b>	WELL @ 4810.0ft (Original Well Elev)
<b>Site:</b>	Diana 6T-HZ Pad Sec.6-T6N-R65W	<b>North Reference:</b>	True
<b>Well:</b>	Diana 6T-241	<b>Survey Calculation Method:</b>	Minimum Curvature
<b>Wellbore:</b>	Wellbore #1		
<b>Design:</b>	Plan #1 (1-25-13)		

Planned Survey									
Measured Depth (ft)	Inclination (°)	Azimuth (°)	Vertical Depth (ft)	+N-S (ft)	+E-W (ft)	Vertical Section (ft)	Dogleg Rate (°/100ft)	Build Rate (°/100ft)	Turn Rate (°/100ft)
4,200.0	6.67	154.22	4,193.4	-108.1	52.2	-106.9	0.00	0.00	0.00
4,240.0	6.67	154.22	4,233.1	-112.3	54.2	-111.0	0.00	0.00	0.00
4,280.0	6.67	154.22	4,272.8	-116.4	56.2	-115.1	0.00	0.00	0.00
4,320.0	6.67	154.22	4,312.6	-120.6	58.3	-119.3	0.00	0.00	0.00
4,360.0	6.67	154.22	4,352.3	-124.8	60.3	-123.4	0.00	0.00	0.00
4,400.0	6.67	154.22	4,392.0	-129.0	62.3	-127.5	0.00	0.00	0.00
4,440.0	6.67	154.22	4,431.8	-133.2	64.3	-131.7	0.00	0.00	0.00
4,480.0	6.67	154.22	4,471.5	-137.3	66.4	-135.8	0.00	0.00	0.00
4,520.0	6.67	154.22	4,511.2	-141.5	68.4	-139.9	0.00	0.00	0.00
4,560.0	6.67	154.22	4,550.9	-145.7	70.4	-144.1	0.00	0.00	0.00
4,600.0	6.67	154.22	4,590.7	-149.9	72.4	-148.2	0.00	0.00	0.00
4,640.0	6.67	154.22	4,630.4	-154.1	74.4	-152.4	0.00	0.00	0.00
4,680.0	6.67	154.22	4,670.1	-158.3	76.5	-156.5	0.00	0.00	0.00
4,720.0	6.67	154.22	4,709.9	-162.4	78.5	-160.6	0.00	0.00	0.00
4,760.0	6.67	154.22	4,749.6	-166.6	80.5	-164.8	0.00	0.00	0.00
4,800.0	6.67	154.22	4,789.3	-170.8	82.5	-168.9	0.00	0.00	0.00
4,840.0	6.67	154.22	4,829.1	-175.0	84.5	-173.0	0.00	0.00	0.00
4,880.0	6.67	154.22	4,868.8	-179.2	86.6	-177.2	0.00	0.00	0.00
4,920.0	6.67	154.22	4,908.5	-183.4	88.6	-181.3	0.00	0.00	0.00
4,960.0	6.67	154.22	4,948.2	-187.5	90.6	-185.4	0.00	0.00	0.00
4,979.2	6.67	154.22	4,967.3	-189.5	91.6	-187.4	0.00	0.00	0.00
5,000.0	6.25	154.22	4,988.0	-191.7	92.6	-189.5	2.00	-2.00	0.00
5,040.0	5.45	154.22	5,027.8	-195.3	94.4	-193.1	2.00	-2.00	0.00
5,080.0	4.65	154.22	5,067.6	-198.5	95.9	-196.3	2.00	-2.00	0.00
5,120.0	3.85	154.22	5,107.5	-201.2	97.2	-198.9	2.00	-2.00	0.00
5,160.0	3.05	154.22	5,147.4	-203.3	98.2	-201.1	2.00	-2.00	0.00
5,200.0	2.25	154.22	5,187.4	-205.0	99.0	-202.7	2.00	-2.00	0.00
5,240.0	1.45	154.22	5,227.4	-206.2	99.6	-203.9	2.00	-2.00	0.00
5,280.0	0.65	154.22	5,267.4	-206.8	99.9	-204.5	2.00	-2.00	0.00
5,312.6	0.00	0.00	5,300.0	-207.0	100.0	-204.7	2.00	-2.00	0.00
5,320.0	0.00	0.00	5,307.4	-207.0	100.0	-204.7	0.00	0.00	0.00
5,360.0	0.00	0.00	5,347.4	-207.0	100.0	-204.7	0.00	0.00	0.00
5,400.0	0.00	0.00	5,387.4	-207.0	100.0	-204.7	0.00	0.00	0.00
5,440.0	0.00	0.00	5,427.4	-207.0	100.0	-204.7	0.00	0.00	0.00
5,480.0	0.00	0.00	5,467.4	-207.0	100.0	-204.7	0.00	0.00	0.00
5,520.0	0.00	0.00	5,507.4	-207.0	100.0	-204.7	0.00	0.00	0.00
5,560.0	0.00	0.00	5,547.4	-207.0	100.0	-204.7	0.00	0.00	0.00
5,600.0	0.00	0.00	5,587.4	-207.0	100.0	-204.7	0.00	0.00	0.00
5,640.0	0.00	0.00	5,627.4	-207.0	100.0	-204.7	0.00	0.00	0.00
5,680.0	0.00	0.00	5,667.4	-207.0	100.0	-204.7	0.00	0.00	0.00
5,720.0	0.00	0.00	5,707.4	-207.0	100.0	-204.7	0.00	0.00	0.00
5,760.0	0.00	0.00	5,747.4	-207.0	100.0	-204.7	0.00	0.00	0.00
5,800.0	0.00	0.00	5,787.4	-207.0	100.0	-204.7	0.00	0.00	0.00
5,840.0	0.00	0.00	5,827.4	-207.0	100.0	-204.7	0.00	0.00	0.00
5,880.0	0.00	0.00	5,867.4	-207.0	100.0	-204.7	0.00	0.00	0.00
5,920.0	0.00	0.00	5,907.4	-207.0	100.0	-204.7	0.00	0.00	0.00
5,960.0	0.00	0.00	5,947.4	-207.0	100.0	-204.7	0.00	0.00	0.00
6,000.0	0.00	0.00	5,987.4	-207.0	100.0	-204.7	0.00	0.00	0.00
6,040.0	0.00	0.00	6,027.4	-207.0	100.0	-204.7	0.00	0.00	0.00
6,080.0	0.00	0.00	6,067.4	-207.0	100.0	-204.7	0.00	0.00	0.00
6,120.0	0.00	0.00	6,107.4	-207.0	100.0	-204.7	0.00	0.00	0.00
6,160.0	0.00	0.00	6,147.4	-207.0	100.0	-204.7	0.00	0.00	0.00
6,200.0	0.00	0.00	6,187.4	-207.0	100.0	-204.7	0.00	0.00	0.00

<b>Database:</b>	Landmark	<b>Local Co-ordinate Reference:</b>	Well Diana 6T-241
<b>Company:</b>	PETROLEUM DEVELOPMENT CORP Weld County CO	<b>TVD Reference:</b>	WELL @ 4810.0ft (Original Well Elev)
<b>Project:</b>	SEC.6-T6N-R65W	<b>MD Reference:</b>	WELL @ 4810.0ft (Original Well Elev)
<b>Site:</b>	Diana 6T-HZ Pad Sec.6-T6N-R65W	<b>North Reference:</b>	True
<b>Well:</b>	Diana 6T-241	<b>Survey Calculation Method:</b>	Minimum Curvature
<b>Wellbore:</b>	Wellbore #1		
<b>Design:</b>	Plan #1 (1-25-13)		

Planned Survey									
Measured Depth (ft)	Inclination (°)	Azimuth (°)	Vertical Depth (ft)	+N/-S (ft)	+E/-W (ft)	Vertical Section (ft)	Dogleg Rate (°/100ft)	Build Rate (°/100ft)	Turn Rate (°/100ft)
6,240.0	0.00	0.00	6,227.4	-207.0	100.0	-204.7	0.00	0.00	0.00
6,280.0	0.00	0.00	6,267.4	-207.0	100.0	-204.7	0.00	0.00	0.00
6,288.8	0.00	0.00	6,276.2	-207.0	100.0	-204.7	0.00	0.00	0.00
6,320.0	2.34	0.03	6,307.4	-206.4	100.0	-204.0	7.50	7.50	0.00
6,360.0	5.34	0.03	6,347.3	-203.7	100.0	-201.4	7.50	7.50	0.00
6,400.0	8.34	0.03	6,387.0	-198.9	100.0	-196.6	7.50	7.50	0.00
6,440.0	11.34	0.03	6,426.4	-192.1	100.0	-189.8	7.50	7.50	0.00
6,480.0	14.34	0.03	6,465.4	-183.2	100.0	-180.9	7.50	7.50	0.00
6,520.0	17.34	0.03	6,503.8	-172.3	100.0	-170.0	7.50	7.50	0.00
6,560.0	20.34	0.03	6,541.7	-159.4	100.0	-157.1	7.50	7.50	0.00
6,600.0	23.34	0.03	6,578.8	-144.5	100.0	-142.2	7.50	7.50	0.00
6,640.0	26.34	0.03	6,615.1	-127.7	100.0	-125.4	7.50	7.50	0.00
6,680.0	29.34	0.03	6,650.5	-109.0	100.1	-106.7	7.50	7.50	0.00
6,720.0	32.34	0.03	6,684.8	-88.5	100.1	-86.2	7.50	7.50	0.00
6,760.0	35.34	0.03	6,718.0	-66.2	100.1	-64.0	7.50	7.50	0.00
6,800.0	38.34	0.03	6,750.1	-42.3	100.1	-40.0	7.50	7.50	0.00
6,840.0	41.34	0.03	6,780.8	-16.6	100.1	-14.4	7.50	7.50	0.00
6,880.0	44.34	0.03	6,810.1	10.6	100.1	12.8	7.50	7.50	0.00
6,920.0	47.34	0.03	6,838.0	39.2	100.1	41.5	7.50	7.50	0.00
6,960.0	50.34	0.03	6,864.3	69.4	100.2	71.6	7.50	7.50	0.00
7,000.0	53.34	0.03	6,889.0	100.8	100.2	103.1	7.50	7.50	0.00
7,040.0	56.34	0.03	6,912.0	133.5	100.2	135.7	7.50	7.50	0.00
7,080.0	59.34	0.03	6,933.3	167.4	100.2	169.6	7.50	7.50	0.00
7,120.0	62.34	0.03	6,952.8	202.3	100.2	204.5	7.50	7.50	0.00
7,160.0	65.34	0.03	6,970.4	238.2	100.3	240.4	7.50	7.50	0.00
7,200.0	68.34	0.03	6,986.2	275.0	100.3	277.2	7.50	7.50	0.00
7,240.0	71.34	0.03	7,000.0	312.5	100.3	314.7	7.50	7.50	0.00
7,280.0	74.34	0.03	7,011.8	350.7	100.3	352.9	7.50	7.50	0.00
7,320.0	77.34	0.03	7,021.5	389.5	100.4	391.7	7.50	7.50	0.00
7,360.0	80.34	0.03	7,029.3	428.7	100.4	430.9	7.50	7.50	0.00
7,400.0	83.34	0.03	7,035.0	468.3	100.4	470.5	7.50	7.50	0.00
7,440.0	86.34	0.03	7,038.6	508.2	100.4	510.3	7.50	7.50	0.00
7,480.0	89.34	0.03	7,040.1	548.1	100.5	550.3	7.50	7.50	0.00
7,490.9	90.16	0.03	7,040.1	559.1	100.5	561.2	7.50	7.50	0.00
7,520.0	90.16	0.03	7,040.0	588.1	100.5	590.3	0.00	0.00	0.00
7,560.0	90.16	0.03	7,039.9	628.1	100.5	630.2	0.00	0.00	0.00
7,600.0	90.16	0.03	7,039.8	668.1	100.5	670.2	0.00	0.00	0.00
7,640.0	90.16	0.03	7,039.7	708.1	100.6	710.2	0.00	0.00	0.00
7,680.0	90.16	0.03	7,039.6	748.1	100.6	750.2	0.00	0.00	0.00
7,720.0	90.16	0.03	7,039.5	788.1	100.6	790.2	0.00	0.00	0.00
7,760.0	90.16	0.03	7,039.4	828.1	100.6	830.2	0.00	0.00	0.00
7,800.0	90.16	0.03	7,039.3	868.1	100.6	870.2	0.00	0.00	0.00
7,840.0	90.16	0.03	7,039.1	908.1	100.7	910.2	0.00	0.00	0.00
7,880.0	90.16	0.03	7,039.0	948.1	100.7	950.2	0.00	0.00	0.00
7,920.0	90.16	0.03	7,038.9	988.1	100.7	990.2	0.00	0.00	0.00
7,960.0	90.16	0.03	7,038.8	1,028.1	100.7	1,030.1	0.00	0.00	0.00
8,000.0	90.16	0.03	7,038.7	1,068.1	100.8	1,070.1	0.00	0.00	0.00
8,040.0	90.16	0.03	7,038.6	1,108.1	100.8	1,110.1	0.00	0.00	0.00
8,080.0	90.16	0.03	7,038.5	1,148.1	100.8	1,150.1	0.00	0.00	0.00
8,120.0	90.16	0.03	7,038.4	1,188.1	100.8	1,190.1	0.00	0.00	0.00
8,160.0	90.16	0.03	7,038.2	1,228.1	100.9	1,230.1	0.00	0.00	0.00
8,200.0	90.16	0.03	7,038.1	1,268.1	100.9	1,270.1	0.00	0.00	0.00
8,240.0	90.16	0.03	7,038.0	1,308.1	100.9	1,310.1	0.00	0.00	0.00

<b>Database:</b>	Landmark	<b>Local Co-ordinate Reference:</b>	Well Diana 6T-241
<b>Company:</b>	PETROLEUM DEVELOPMENT CORP Weld County CO	<b>TVD Reference:</b>	WELL @ 4810.0ft (Original Well Elev)
<b>Project:</b>	SEC.6-T6N-R65W	<b>MD Reference:</b>	WELL @ 4810.0ft (Original Well Elev)
<b>Site:</b>	Diana 6T-HZ Pad Sec.6-T6N-R65W	<b>North Reference:</b>	True
<b>Well:</b>	Diana 6T-241	<b>Survey Calculation Method:</b>	Minimum Curvature
<b>Wellbore:</b>	Wellbore #1		
<b>Design:</b>	Plan #1 (1-25-13)		

Planned Survey									
Measured Depth (ft)	Inclination (°)	Azimuth (°)	Vertical Depth (ft)	+N-S (ft)	+E-W (ft)	Vertical Section (ft)	Dogleg Rate (°/100ft)	Build Rate (°/100ft)	Turn Rate (°/100ft)
8,280.0	90.16	0.03	7,037.9	1,348.1	100.9	1,350.1	0.00	0.00	0.00
8,320.0	90.16	0.03	7,037.8	1,388.1	101.0	1,390.1	0.00	0.00	0.00
8,360.0	90.16	0.03	7,037.7	1,428.1	101.0	1,430.0	0.00	0.00	0.00
8,400.0	90.16	0.03	7,037.6	1,468.1	101.0	1,470.0	0.00	0.00	0.00
8,440.0	90.16	0.03	7,037.5	1,508.1	101.0	1,510.0	0.00	0.00	0.00
8,480.0	90.16	0.03	7,037.4	1,548.1	101.1	1,550.0	0.00	0.00	0.00
8,520.0	90.16	0.03	7,037.2	1,588.1	101.1	1,590.0	0.00	0.00	0.00
8,560.0	90.16	0.03	7,037.1	1,628.1	101.1	1,630.0	0.00	0.00	0.00
8,600.0	90.16	0.03	7,037.0	1,668.1	101.1	1,670.0	0.00	0.00	0.00
8,640.0	90.16	0.03	7,036.9	1,708.1	101.2	1,710.0	0.00	0.00	0.00
8,680.0	90.16	0.03	7,036.8	1,748.1	101.2	1,750.0	0.00	0.00	0.00
8,720.0	90.16	0.03	7,036.7	1,788.1	101.2	1,790.0	0.00	0.00	0.00
8,760.0	90.16	0.03	7,036.6	1,828.1	101.2	1,829.9	0.00	0.00	0.00
8,800.0	90.16	0.03	7,036.5	1,868.1	101.3	1,869.9	0.00	0.00	0.00
8,840.0	90.16	0.03	7,036.3	1,908.1	101.3	1,909.9	0.00	0.00	0.00
8,880.0	90.16	0.03	7,036.2	1,948.1	101.3	1,949.9	0.00	0.00	0.00
8,920.0	90.16	0.03	7,036.1	1,988.1	101.3	1,989.9	0.00	0.00	0.00
8,960.0	90.16	0.03	7,036.0	2,028.1	101.3	2,029.9	0.00	0.00	0.00
9,000.0	90.16	0.03	7,035.9	2,068.1	101.4	2,069.9	0.00	0.00	0.00
9,040.0	90.16	0.03	7,035.8	2,108.1	101.4	2,109.9	0.00	0.00	0.00
9,080.0	90.16	0.03	7,035.7	2,148.1	101.4	2,149.9	0.00	0.00	0.00
9,120.0	90.16	0.03	7,035.6	2,188.1	101.4	2,189.9	0.00	0.00	0.00
9,160.0	90.16	0.03	7,035.5	2,228.1	101.5	2,229.8	0.00	0.00	0.00
9,200.0	90.16	0.03	7,035.3	2,268.1	101.5	2,269.8	0.00	0.00	0.00
9,240.0	90.16	0.03	7,035.2	2,308.1	101.5	2,309.8	0.00	0.00	0.00
9,280.0	90.16	0.03	7,035.1	2,348.1	101.5	2,349.8	0.00	0.00	0.00
9,320.0	90.16	0.03	7,035.0	2,388.1	101.6	2,389.8	0.00	0.00	0.00
9,360.0	90.16	0.03	7,034.9	2,428.1	101.6	2,429.8	0.00	0.00	0.00
9,400.0	90.16	0.03	7,034.8	2,468.1	101.6	2,469.8	0.00	0.00	0.00
9,440.0	90.16	0.03	7,034.7	2,508.1	101.6	2,509.8	0.00	0.00	0.00
9,480.0	90.16	0.03	7,034.6	2,548.1	101.7	2,549.8	0.00	0.00	0.00
9,520.0	90.16	0.03	7,034.4	2,588.1	101.7	2,589.8	0.00	0.00	0.00
9,560.0	90.16	0.03	7,034.3	2,628.1	101.7	2,629.8	0.00	0.00	0.00
9,600.0	90.16	0.03	7,034.2	2,668.1	101.7	2,669.7	0.00	0.00	0.00
9,640.0	90.16	0.03	7,034.1	2,708.1	101.8	2,709.7	0.00	0.00	0.00
9,680.0	90.16	0.03	7,034.0	2,748.1	101.8	2,749.7	0.00	0.00	0.00
9,720.0	90.16	0.03	7,033.9	2,788.1	101.8	2,789.7	0.00	0.00	0.00
9,760.0	90.16	0.03	7,033.8	2,828.1	101.8	2,829.7	0.00	0.00	0.00
9,800.0	90.16	0.03	7,033.7	2,868.1	101.9	2,869.7	0.00	0.00	0.00
9,840.0	90.16	0.03	7,033.6	2,908.1	101.9	2,909.7	0.00	0.00	0.00
9,880.0	90.16	0.03	7,033.4	2,948.1	101.9	2,949.7	0.00	0.00	0.00
9,920.0	90.16	0.03	7,033.3	2,988.1	101.9	2,989.7	0.00	0.00	0.00
9,960.0	90.16	0.03	7,033.2	3,028.1	102.0	3,029.7	0.00	0.00	0.00
10,000.0	90.16	0.03	7,033.1	3,068.1	102.0	3,069.6	0.00	0.00	0.00
10,040.0	90.16	0.03	7,033.0	3,108.1	102.0	3,109.6	0.00	0.00	0.00
10,080.0	90.16	0.03	7,032.9	3,148.1	102.0	3,149.6	0.00	0.00	0.00
10,120.0	90.16	0.03	7,032.8	3,188.1	102.0	3,189.6	0.00	0.00	0.00
10,160.0	90.16	0.03	7,032.7	3,228.1	102.1	3,229.6	0.00	0.00	0.00
10,200.0	90.16	0.03	7,032.6	3,268.1	102.1	3,269.6	0.00	0.00	0.00
10,240.0	90.16	0.03	7,032.4	3,308.1	102.1	3,309.6	0.00	0.00	0.00
10,280.0	90.16	0.03	7,032.3	3,348.1	102.1	3,349.6	0.00	0.00	0.00
10,320.0	90.16	0.03	7,032.2	3,388.1	102.2	3,389.6	0.00	0.00	0.00
10,360.0	90.16	0.03	7,032.1	3,428.1	102.2	3,429.6	0.00	0.00	0.00

<b>Database:</b>	Landmark	<b>Local Co-ordinate Reference:</b>	Well Diana 6T-241
<b>Company:</b>	PETROLEUM DEVELOPMENT CORP Weld County CO	<b>TVD Reference:</b>	WELL @ 4810.0ft (Original Well Elev)
<b>Project:</b>	SEC.6-T6N-R65W	<b>MD Reference:</b>	WELL @ 4810.0ft (Original Well Elev)
<b>Site:</b>	Diana 6T-HZ Pad Sec.6-T6N-R65W	<b>North Reference:</b>	True
<b>Well:</b>	Diana 6T-241	<b>Survey Calculation Method:</b>	Minimum Curvature
<b>Wellbore:</b>	Wellbore #1		
<b>Design:</b>	Plan #1 (1-25-13)		

#### Planned Survey

Measured Depth (ft)	Inclination (°)	Azimuth (°)	Vertical Depth (ft)	+N/-S (ft)	+E/-W (ft)	Vertical Section (ft)	Dogleg Rate (°/100ft)	Build Rate (°/100ft)	Turn Rate (°/100ft)
10,400.0	90.16	0.03	7,032.0	3,468.1	102.2	3,469.5	0.00	0.00	0.00
10,440.0	90.16	0.03	7,031.9	3,508.1	102.2	3,509.5	0.00	0.00	0.00
10,480.0	90.16	0.03	7,031.8	3,548.1	102.3	3,549.5	0.00	0.00	0.00
10,520.0	90.16	0.03	7,031.7	3,588.1	102.3	3,589.5	0.00	0.00	0.00
10,560.0	90.16	0.03	7,031.5	3,628.1	102.3	3,629.5	0.00	0.00	0.00
10,600.0	90.16	0.03	7,031.4	3,668.1	102.3	3,669.5	0.00	0.00	0.00
10,640.0	90.16	0.03	7,031.3	3,708.1	102.4	3,709.5	0.00	0.00	0.00
10,680.0	90.16	0.03	7,031.2	3,748.1	102.4	3,749.5	0.00	0.00	0.00
10,720.0	90.16	0.03	7,031.1	3,788.1	102.4	3,789.5	0.00	0.00	0.00
10,760.0	90.16	0.03	7,031.0	3,828.1	102.4	3,829.5	0.00	0.00	0.00
10,800.0	90.16	0.03	7,030.9	3,868.1	102.5	3,869.4	0.00	0.00	0.00
10,840.0	90.16	0.03	7,030.8	3,908.1	102.5	3,909.4	0.00	0.00	0.00
10,880.0	90.16	0.03	7,030.7	3,948.1	102.5	3,949.4	0.00	0.00	0.00
10,920.0	90.16	0.03	7,030.5	3,988.1	102.5	3,989.4	0.00	0.00	0.00
10,960.0	90.16	0.03	7,030.4	4,028.1	102.6	4,029.4	0.00	0.00	0.00
11,000.0	90.16	0.03	7,030.3	4,068.1	102.6	4,069.4	0.00	0.00	0.00
11,040.0	90.16	0.03	7,030.2	4,108.1	102.6	4,109.4	0.00	0.00	0.00
11,080.0	90.16	0.03	7,030.1	4,148.1	102.6	4,149.4	0.00	0.00	0.00
11,120.0	90.16	0.03	7,030.0	4,188.1	102.7	4,189.4	0.00	0.00	0.00
11,160.0	90.16	0.03	7,029.9	4,228.1	102.7	4,229.4	0.00	0.00	0.00
11,200.0	90.16	0.03	7,029.8	4,268.1	102.7	4,269.3	0.00	0.00	0.00
11,240.0	90.16	0.03	7,029.6	4,308.1	102.7	4,309.3	0.00	0.00	0.00
11,280.0	90.16	0.03	7,029.5	4,348.1	102.7	4,349.3	0.00	0.00	0.00
11,320.0	90.16	0.03	7,029.4	4,388.1	102.8	4,389.3	0.00	0.00	0.00
11,360.0	90.16	0.03	7,029.3	4,428.1	102.8	4,429.3	0.00	0.00	0.00
11,400.0	90.16	0.03	7,029.2	4,468.1	102.8	4,469.3	0.00	0.00	0.00
11,440.0	90.16	0.03	7,029.1	4,508.1	102.8	4,509.3	0.00	0.00	0.00
11,471.3	90.16	0.03	7,029.0	4,539.4	102.9	4,540.6	0.00	0.00	0.00

#### Casing Points

Measured Depth (ft)	Vertical Depth (ft)	Name	Casing Diameter (")	Hole Diameter (")
7,490.9	7,040.1	7"	7	8-3/4

#### Plan Annotations

Measured Depth (ft)	Vertical Depth (ft)	Local Coordinates		Comment
		+N/-S (ft)	+E/-W (ft)	
3,000.0	3,000.0	0.0	0.0	KOP #1
6,288.8	6,276.2	-207.0	100.0	KOP #2
7,490.9	7,040.1	559.0	100.5	End of Build



# **PETROLEUM DEVELOPMENT CORP Weld County CO**

**SEC.6-T6N-R65W**

**Diana 6T-HZ Pad Sec.6-T6N-R65W**

**Diana 6T-241**

**Wellbore #1**

**Plan #1 (1-25-13)**

## **Anticollision Report**

**25 January, 2013**



<b>Company:</b>	PETROLEUM DEVELOPMENT CORP Weld County CO	<b>Local Co-ordinate Reference:</b>	Well Diana 6T-241
<b>Project:</b>	SEC.6-T6N-R65W	<b>TVD Reference:</b>	WELL @ 4810.0ft (Original Well Elev)
<b>Reference Site:</b>	Diana 6T-HZ Pad Sec.6-T6N-R65W	<b>MD Reference:</b>	WELL @ 4810.0ft (Original Well Elev)
<b>Site Error:</b>	0.0ft	<b>North Reference:</b>	True
<b>Reference Well:</b>	Diana 6T-241	<b>Survey Calculation Method:</b>	Minimum Curvature
<b>Well Error:</b>	0.0ft	<b>Output errors are at</b>	2.00 sigma
<b>Reference Wellbore</b>	Wellbore #1	<b>Database:</b>	Landmark
<b>Reference Design:</b>	Plan #1 (1-25-13)	<b>Offset TVD Reference:</b>	Offset Datum

Offset Design Diana 6T-HZ Pad Sec.6-T6N-R65W - Diana 6Q-421 - Wellbore #1 - Plan #1 (1-25-13)													Offset Site Error:	0.0 ft
Survey Program: 0-MWD													Offset Well Error:	0.0 ft
Measured Depth (ft)	Vertical Depth (ft)	Measured Depth (ft)	Vertical Depth (ft)	Reference	Offset	Semi Major Axis	Highside Toolface (°)	Offset Wellbore Centre +N/-S (ft)	Offset Wellbore Centre +E/-W (ft)	Between Centres (ft)	Between Ellipses (ft)	Minimum Separation (ft)	Separation Factor	Warning
1,600.0	1,600.0	1,598.5	1,597.3	3.5	3.3	-132.99		-32.6	-35.0	47.9	41.1	6.80	7.044	
1,700.0	1,700.0	1,698.3	1,696.7	3.7	3.6	-138.09		-40.0	-35.9	53.8	46.6	7.24	7.429	
1,800.0	1,800.0	1,798.0	1,796.2	3.9	3.8	-142.15		-47.3	-36.8	60.1	52.4	7.69	7.811	
1,900.0	1,900.0	1,897.7	1,895.6	4.2	4.0	-145.44		-54.7	-37.7	66.5	58.4	8.13	8.180	
2,000.0	2,000.0	1,997.4	1,995.1	4.4	4.3	-148.13		-62.0	-38.6	73.2	64.6	8.58	8.530	
2,100.0	2,100.0	2,097.2	2,094.5	4.6	4.5	-150.37		-69.4	-39.4	80.0	71.0	9.03	8.858	
2,200.0	2,200.0	2,196.9	2,194.0	4.8	4.8	-152.26		-76.7	-40.3	86.9	77.4	9.48	9.166	
2,300.0	2,300.0	2,296.6	2,293.4	5.1	5.0	-153.87		-84.1	-41.2	93.9	83.9	9.93	9.452	
2,400.0	2,400.0	2,396.3	2,392.9	5.3	5.3	-155.26		-91.4	-42.1	100.9	90.5	10.38	9.720	
2,500.0	2,500.0	2,496.1	2,492.3	5.5	5.5	-156.47		-98.8	-43.0	108.0	97.2	10.84	9.968	
2,600.0	2,600.0	2,595.8	2,591.8	5.7	5.8	-157.52		-106.1	-43.9	115.1	103.9	11.29	10.200	
2,700.0	2,700.0	2,695.5	2,691.2	6.0	6.0	-158.46		-113.5	-44.8	122.3	110.6	11.74	10.416	
2,800.0	2,800.0	2,795.2	2,790.7	6.2	6.3	-159.28		-120.8	-45.7	129.5	117.3	12.20	10.619	
2,900.0	2,900.0	2,894.9	2,890.1	6.4	6.5	-160.03		-128.2	-46.6	136.7	124.1	12.65	10.808	
3,000.0	3,000.0	2,994.7	2,989.6	6.6	6.8	-160.69		-135.5	-47.5	144.0	130.9	13.11	10.985	
3,100.0	3,100.0	3,094.5	3,089.1	6.8	7.0	-161.47		-142.9	-48.4	150.0	136.6	13.36	11.226	
3,200.0	3,199.8	3,194.4	3,188.7	7.0	7.3	-162.26		-150.3	-49.3	153.6	139.8	13.76	11.161	
3,300.0	3,299.5	3,294.3	3,288.3	7.2	7.6	-163.06		-157.6	-50.2	154.8	140.6	14.16	10.929	
3,333.4	3,332.7	3,327.7	3,321.6	7.2	7.6	-163.87		-160.1	-50.5	154.7	140.4	14.30	10.818	
3,400.0	3,398.8	3,394.1	3,387.8	7.4	7.8	-164.68		-165.0	-51.1	154.4	139.8	14.59	10.582	
3,500.0	3,498.1	3,493.8	3,487.3	7.6	8.1	-165.49		-172.3	-51.9	154.1	139.1	15.03	10.254	
3,543.2	3,541.0	3,536.9	3,530.3	7.6	8.2	-166.30		-175.5	-52.3	154.1	138.8	15.22	10.121	
3,600.0	3,597.4	3,593.6	3,586.8	7.8	8.3	-167.11		-179.7	-52.8	154.1	138.6	15.48	9.955	
3,700.0	3,696.8	3,693.4	3,686.3	8.0	8.6	-167.92		-187.0	-53.7	154.4	138.5	15.94	9.685	
3,800.0	3,796.1	3,793.2	3,785.8	8.2	8.9	-168.73		-194.4	-54.6	155.0	138.6	16.42	9.442	
3,900.0	3,895.4	3,897.8	3,890.3	8.4	9.1	-169.54		-200.3	-55.3	154.4	137.5	16.88	9.143	
4,000.0	3,994.7	4,002.0	3,994.5	8.6	9.3	-170.35		-202.3	-55.6	151.0	133.7	17.37	8.693	
4,100.0	4,094.1	4,101.6	4,094.1	8.9	9.5	-171.16		-202.3	-55.6	146.7	128.9	17.86	8.213	
4,200.0	4,193.4	4,200.9	4,193.4	9.1	9.6	-171.97		-202.3	-55.6	143.2	124.9	18.35	7.805	
4,300.0	4,292.7	4,300.2	4,292.7	9.4	9.8	-172.78		-202.3	-55.6	140.6	121.7	18.84	7.461	
4,400.0	4,392.0	4,399.5	4,392.0	9.6	10.0	-173.59		-202.3	-55.6	138.9	119.5	19.33	7.182	
4,500.0	4,491.4	4,498.9	4,491.4	9.9	10.2	-174.40		-202.3	-55.6	138.1	118.3	19.83	6.966	
4,527.2	4,518.4	4,525.9	4,518.4	9.9	10.2	-175.21		-202.3	-55.6	138.1	118.1	19.96	6.917	
4,600.0	4,590.7	4,598.2	4,590.7	10.1	10.4	-176.02		-202.3	-55.6	138.3	118.0	20.31	6.810	
4,700.0	4,690.0	4,697.5	4,690.0	10.4	10.5	-176.83		-202.3	-55.6	139.5	118.7	20.79	6.711	
4,800.0	4,789.3	4,796.8	4,789.3	10.7	10.7	-177.64		-202.3	-55.6	141.7	120.4	21.25	6.666	
4,900.0	4,888.6	4,896.2	4,888.6	10.9	10.9	-178.45		-202.3	-55.6	144.7	123.0	21.70	6.667	
4,979.2	4,967.3	4,974.8	4,967.3	11.1	11.1	-179.26		-202.3	-55.6	147.7	125.7	22.05	6.699	
5,000.0	4,988.0	4,995.5	4,988.0	11.2	11.1	-180.07		-202.3	-55.6	148.6	126.4	22.14	6.710	
5,100.0	5,087.6	5,095.1	5,087.6	11.4	11.3	-180.88		-202.3	-55.6	152.2	129.6	22.56	6.747	
5,200.0	5,187.4	5,194.9	5,187.4	11.7	11.5	-181.69		-202.3	-55.6	154.6	131.7	22.96	6.735	
5,300.0	5,287.4	5,294.9	5,287.4	11.9	11.7	-182.50		-202.3	-55.6	155.6	132.3	23.36	6.663	
5,312.6	5,300.0	5,307.5	5,300.0	11.9	11.7	-183.31		-202.3	-55.6	155.7	132.3	23.41	6.650	
5,400.0	5,387.4	5,394.9	5,387.4	12.1	11.9	-184.12		-202.3	-55.6	155.7	131.9	23.75	6.555	
5,500.0	5,487.4	5,494.9	5,487.4	12.3	12.0	-184.93		-202.3	-55.6	155.7	131.5	24.14	6.447	
5,600.0	5,587.4	5,594.9	5,587.4	12.5	12.2	-185.74		-202.3	-55.6	155.7	131.1	24.54	6.342	
5,700.0	5,687.4	5,694.9	5,687.4	12.7	12.4	-186.55		-202.3	-55.6	155.7	130.7	24.94	6.240	
5,800.0	5,787.4	5,794.9	5,787.4	12.9	12.6	-187.36		-202.3	-55.6	155.7	130.3	25.35	6.141	
5,900.0	5,887.4	5,894.9	5,887.4	13.1	12.8	-188.17		-202.3	-55.6	155.7	129.9	25.75	6.045	
6,000.0	5,987.4	5,994.9	5,987.4	13.3	13.0	-188.98		-202.3	-55.6	155.7	129.5	26.16	5.951	
6,100.0	6,087.4	6,094.9	6,087.4	13.5	13.2	-189.79		-202.3	-55.6	155.7	129.1	26.56	5.860	

CC - Min centre to center distance or convergent point, SF - min separation factor, ES - min ellipse separation

Diana 6T-HZ Pad Sec.6-T6N-R65W - Diana 6Q-421 - Wellbore #1 - Plan #1 (1-25-13)													Offset Site Error: 0.0 ft	
Survey Program: 0-MWD													Offset Well Error: 0.0 ft	
Reference		Offset		Semi Major Axis			Distance							Warning
Measured Depth	Vertical Depth	Measured Depth	Vertical Depth	Reference	Offset	Highside Toolface	Offset Wellbore Centre		Between Centres	Between Ellipses	Minimum Separation	Separation Factor		
(ft)	(ft)	(ft)	(ft)	(ft)	(ft)	(°)	+N/-S (ft)	+E/-W (ft)	(ft)	(ft)	(ft)			
6,200.0	6,187.4	6,194.9	6,187.4	13.7	13.4	-88.29	-202.3	-55.6	155.7	128.7	26.97	5.771		
6,288.8	6,276.2	6,283.7	6,276.2	13.9	13.6	-88.29	-202.3	-55.6	155.7	128.3	27.34	5.694		
6,300.0	6,287.4	6,294.9	6,287.4	13.9	13.6	-88.35	-202.3	-55.6	155.7	128.3	27.38	5.685		
6,350.0	6,337.3	6,344.8	6,337.3	14.0	13.7	-89.22	-202.3	-55.6	155.6	128.0	27.58	5.641		
6,372.3	6,359.5	6,367.0	6,359.5	14.0	13.8	-90.00	-202.3	-55.6	155.6	127.9	27.67	5.623		
6,400.0	6,387.0	6,394.5	6,387.0	14.1	13.8	-91.28	-202.3	-55.6	155.6	127.9	27.78	5.603		
6,450.0	6,436.2	6,443.7	6,436.2	14.1	13.9	-94.45	-202.3	-55.6	156.1	128.1	27.96	5.583		
6,500.0	6,484.7	6,492.3	6,484.8	14.2	14.0	-98.26	-201.4	-55.7	157.5	129.4	28.10	5.604		
6,550.0	6,532.3	6,541.5	6,533.8	14.3	14.1	-101.97	-197.3	-56.3	160.1	131.9	28.20	5.676		
6,600.0	6,578.8	6,591.4	6,583.1	14.3	14.2	-105.50	-190.1	-57.3	163.9	135.6	28.25	5.801		
6,650.0	6,624.1	6,642.0	6,632.6	14.4	14.2	-108.79	-179.4	-58.8	168.7	140.5	28.24	5.975		
6,700.0	6,667.8	6,693.4	6,681.9	14.4	14.3	-111.80	-165.4	-60.7	174.5	146.4	28.17	6.196		
6,750.0	6,709.9	6,745.5	6,731.0	14.5	14.4	-114.51	-147.7	-63.2	181.2	153.2	28.06	6.459		
6,800.0	6,750.1	6,798.5	6,779.4	14.5	14.4	-116.90	-126.5	-66.2	188.7	160.8	27.92	6.759		
6,850.0	6,788.2	6,852.3	6,826.9	14.6	14.5	-118.97	-101.6	-69.6	196.7	169.0	27.75	7.088		
6,900.0	6,824.2	6,906.9	6,873.3	14.6	14.5	-120.73	-72.9	-73.6	205.3	177.7	27.60	7.439		
6,950.0	6,857.9	6,962.4	6,918.1	14.8	14.6	-122.20	-40.6	-78.2	214.2	186.7	27.46	7.800		
7,000.0	6,889.0	7,018.8	6,961.1	14.9	14.7	-123.37	-4.5	-83.2	223.4	196.0	27.38	8.160		
7,050.0	6,917.5	7,076.0	7,001.8	15.2	14.9	-124.29	35.2	-88.7	232.8	205.4	27.36	8.506		
7,100.0	6,943.3	7,134.0	7,040.0	15.4	15.1	-124.95	78.5	-94.8	242.2	214.7	27.45	8.824		
7,150.0	6,966.2	7,192.9	7,075.2	15.7	15.4	-125.38	125.2	-101.3	251.6	223.9	27.65	9.100		
7,200.0	6,986.2	7,252.6	7,107.1	16.1	15.7	-125.60	175.2	-108.3	260.9	232.9	27.98	9.324		
7,250.0	7,003.1	7,313.0	7,135.3	16.5	16.1	-125.62	228.1	-115.6	270.1	241.6	28.47	9.485		
7,300.0	7,016.9	7,374.2	7,159.4	16.9	16.5	-125.46	283.7	-123.4	279.0	249.8	29.12	9.581		
7,350.0	7,027.5	7,436.0	7,179.2	17.4	17.1	-125.13	341.7	-131.5	287.6	257.7	29.93	9.609		
7,400.0	7,035.0	7,498.4	7,194.2	17.9	17.7	-124.63	401.7	-139.9	295.9	265.0	30.90	9.576		
7,450.0	7,039.1	7,561.3	7,204.4	18.5	18.4	-124.00	463.2	-148.4	303.7	271.7	32.02	9.485		
7,490.9	7,040.1	7,604.4	7,209.0	18.9	18.9	-123.51	505.6	-154.3	310.3	277.4	32.93	9.424		
7,500.0	7,040.1	7,613.3	7,209.9	19.0	19.0	-123.53	514.4	-155.6	311.9	278.8	33.10	9.423		
7,600.0	7,039.8	7,721.9	7,219.1	20.3	20.4	-123.45	621.5	-170.6	328.4	293.1	35.32	9.297		
7,700.0	7,039.5	7,830.0	7,219.5	21.6	21.9	-122.09	728.5	-186.2	340.9	302.7	38.13	8.940		
7,800.0	7,039.3	7,928.9	7,218.2	23.0	23.3	-120.70	826.4	-200.5	352.8	311.8	41.04	8.596		
7,900.0	7,039.0	8,027.9	7,216.9	24.5	24.8	-119.40	924.2	-214.9	364.9	320.8	44.09	8.276		
8,000.0	7,038.7	8,126.8	7,215.6	26.1	26.4	-118.18	1,022.1	-229.2	377.2	330.0	47.27	7.980		
8,100.0	7,038.4	8,225.7	7,214.3	27.7	28.1	-117.04	1,120.0	-243.5	389.7	339.1	50.55	7.710		
8,200.0	7,038.1	8,324.7	7,213.0	29.3	29.7	-115.97	1,217.9	-257.9	402.3	348.4	53.91	7.463		
8,300.0	7,037.9	8,423.6	7,211.8	30.9	31.4	-114.97	1,315.8	-272.2	415.0	357.7	57.34	7.238		
8,400.0	7,037.6	8,522.5	7,210.5	32.6	33.2	-114.03	1,413.6	-286.5	427.9	367.0	60.84	7.033		
8,500.0	7,037.3	8,621.4	7,209.2	34.4	34.9	-113.14	1,511.5	-300.9	440.8	376.4	64.38	6.847		
8,600.0	7,037.0	8,747.6	7,207.9	36.1	37.0	-112.29	1,636.8	-315.4	451.3	383.1	68.22	6.616		
8,700.0	7,036.7	8,880.2	7,207.4	37.9	39.0	-112.04	1,769.3	-320.4	454.9	383.0	71.84	6.332		
8,800.0	7,036.5	8,981.6	7,207.5	39.6	40.7	-112.11	1,870.7	-319.8	454.5	379.4	75.11	6.051		
8,900.0	7,036.2	9,081.6	7,207.6	41.4	42.5	-112.18	1,970.7	-319.2	454.1	375.7	78.41	5.791		
9,000.0	7,035.9	9,181.6	7,207.6	43.2	44.2	-112.24	2,070.7	-318.5	453.7	371.9	81.73	5.551		
9,100.0	7,035.6	9,281.6	7,207.7	45.0	46.0	-112.31	2,170.6	-317.9	453.3	368.2	85.06	5.329		
9,200.0	7,035.3	9,381.6	7,207.7	46.8	47.8	-112.37	2,270.6	-317.3	452.9	364.5	88.41	5.122		
9,300.0	7,035.1	9,481.6	7,207.8	48.7	49.6	-112.44	2,370.6	-316.7	452.5	360.7	91.78	4.930		
9,400.0	7,034.8	9,581.6	7,207.8	50.5	51.4	-112.51	2,470.6	-316.0	452.1	356.9	95.16	4.751		
9,500.0	7,034.5	9,681.6	7,207.9	52.3	53.2	-112.57	2,570.6	-315.4	451.7	353.2	98.55	4.584		
9,600.0	7,034.2	9,781.6	7,208.0	54.2	55.0	-112.64	2,670.6	-314.8	451.3	349.4	101.94	4.427		
9,700.0	7,033.9	9,881.6	7,208.0	56.0	56.9	-112.71	2,770.6	-314.2	450.9	345.6	105.35	4.280		

<b>Company:</b>	PETROLEUM DEVELOPMENT CORP Weld County CO	<b>Local Co-ordinate Reference:</b>	Well Diana 6T-241
<b>Project:</b>	SEC.6-T6N-R65W	<b>TVD Reference:</b>	WELL @ 4810.0ft (Original Well Elev)
<b>Reference Site:</b>	Diana 6T-HZ Pad Sec.6-T6N-R65W	<b>MD Reference:</b>	WELL @ 4810.0ft (Original Well Elev)
<b>Site Error:</b>	0.0ft	<b>North Reference:</b>	True
<b>Reference Well:</b>	Diana 6T-241	<b>Survey Calculation Method:</b>	Minimum Curvature
<b>Well Error:</b>	0.0ft	<b>Output errors are at</b>	2.00 sigma
<b>Reference Wellbore</b>	Wellbore #1	<b>Database:</b>	Landmark
<b>Reference Design:</b>	Plan #1 (1-25-13)	<b>Offset TVD Reference:</b>	Offset Datum

<b>Offset Design</b> Diana 6T-HZ Pad Sec.6-T6N-R65W - Diana 6Q-421 - Wellbore #1 - Plan #1 (1-25-13)													<b>Offset Site Error:</b>	0.0 ft
Survey Program: 0-MWD													<b>Offset Well Error:</b>	0.0 ft
Measured Depth (ft)	Vertical Depth (ft)	Measured Depth (ft)	Vertical Depth (ft)	Reference	Offset	Highside Toolface (°)	Offset Wellbore Centre +N/-S (ft)	Offset Wellbore Centre +E/-W (ft)	Between Centres (ft)	Between Ellipses (ft)	Minimum Separation (ft)	Separation Factor	Warning	
9,800.0	7,033.7	9,981.6	7,208.1	57.9	58.7	-112.77	2,870.6	-313.5	450.5	341.8	108.76	4.143		
9,900.0	7,033.4	10,081.6	7,208.1	59.7	60.5	-112.84	2,970.6	-312.9	450.1	338.0	112.17	4.013		
10,000.0	7,033.1	10,181.6	7,208.2	61.6	62.4	-112.91	3,070.6	-312.3	449.7	334.2	115.59	3.891		
10,100.0	7,032.8	10,281.6	7,208.2	63.5	64.2	-112.98	3,170.6	-311.7	449.4	330.3	119.02	3.776		
10,200.0	7,032.6	10,381.6	7,208.3	65.3	66.1	-113.04	3,270.6	-311.0	449.0	326.5	122.45	3.667		
10,300.0	7,032.3	10,481.6	7,208.3	67.2	67.9	-113.11	3,370.6	-310.4	448.6	322.7	125.88	3.564		
10,400.0	7,032.0	10,581.6	7,208.4	69.1	69.8	-113.18	3,470.6	-309.8	448.2	318.9	129.31	3.466		
10,500.0	7,031.7	10,681.6	7,208.5	71.0	71.7	-113.25	3,570.6	-309.2	447.8	315.1	132.75	3.373		
10,600.0	7,031.4	10,781.6	7,208.5	72.8	73.5	-113.32	3,670.6	-308.5	447.4	311.2	136.18	3.285		
10,700.0	7,031.2	10,881.6	7,208.6	74.7	75.4	-113.38	3,770.6	-307.9	447.0	307.4	139.62	3.202		
10,800.0	7,030.9	10,981.6	7,208.6	76.6	77.3	-113.45	3,870.6	-307.3	446.6	303.6	143.06	3.122		
10,900.0	7,030.6	11,081.6	7,208.7	78.5	79.1	-113.52	3,970.6	-306.7	446.3	299.8	146.50	3.046		
11,000.0	7,030.3	11,181.6	7,208.7	80.4	81.0	-113.59	4,070.6	-306.0	445.9	295.9	149.94	2.974		
11,100.0	7,030.0	11,281.6	7,208.8	82.3	82.9	-113.66	4,170.6	-305.4	445.5	292.1	153.38	2.905		
11,200.0	7,029.8	11,381.6	7,208.8	84.2	84.8	-113.73	4,270.6	-304.8	445.1	288.3	156.82	2.838		
11,300.0	7,029.5	11,481.6	7,208.9	86.1	86.7	-113.79	4,370.6	-304.2	444.7	284.5	160.26	2.775		
11,400.0	7,029.2	11,581.5	7,209.0	88.0	88.5	-113.86	4,470.6	-303.5	444.4	280.7	163.70	2.714		
11,471.3	7,029.0	11,652.9	7,209.0	89.0	89.9	-113.91	4,541.9	-303.1	444.1	278.2	165.90	2.677 SF		

<b>Company:</b>	PETROLEUM DEVELOPMENT CORP Weld County CO	<b>Local Co-ordinate Reference:</b>	Well Diana 6T-241
<b>Project:</b>	SEC.6-T6N-R65W	<b>TVD Reference:</b>	WELL @ 4810.0ft (Original Well Elev)
<b>Reference Site:</b>	Diana 6T-HZ Pad Sec.6-T6N-R65W	<b>MD Reference:</b>	WELL @ 4810.0ft (Original Well Elev)
<b>Site Error:</b>	0.0ft	<b>North Reference:</b>	True
<b>Reference Well:</b>	Diana 6T-241	<b>Survey Calculation Method:</b>	Minimum Curvature
<b>Well Error:</b>	0.0ft	<b>Output errors are at</b>	2.00 sigma
<b>Reference Wellbore</b>	Wellbore #1	<b>Database:</b>	Landmark
<b>Reference Design:</b>	Plan #1 (1-25-13)	<b>Offset TVD Reference:</b>	Offset Datum

Offset Design Diana 6T-HZ Pad Sec.6-T6N-R65W - Diana 6T-221 - Wellbore #1 - Plan #1 (1-25-13)													Offset Site Error:	0.0 ft
Survey Program: 0-MWD													Offset Well Error:	0.0 ft
Measured Depth (ft)	Vertical Depth (ft)	Measured Depth (ft)	Vertical Depth (ft)	Reference	Offset	Semi Major Axis	Highside Toolface (°)	Offset Wellbore Centre +N/-S (ft)	+E/-W (ft)	Between Centres (ft)	Between Ellipses (ft)	Minimum Separation (ft)	Separation Factor	Warning
0.0	0.0	0.0	0.0	0.0	0.0	89.99	89.99	0.0	58.4	58.4				
100.0	100.0	100.0	100.0	0.1	0.1	89.99	89.99	0.0	58.4	58.4	58.2	0.22	259.798	
200.0	200.0	200.0	200.0	0.3	0.3	89.99	89.99	0.0	58.4	58.4	57.7	0.67	86.599 CC, ES	
300.0	300.0	298.0	298.0	0.6	0.5	90.45	90.45	-0.5	60.0	60.0	58.9	1.11	54.223	
400.0	400.0	395.9	395.7	0.8	0.8	91.67	91.67	-1.9	64.8	65.0	63.4	1.55	42.018	
500.0	500.0	493.2	492.7	1.0	1.0	93.33	93.33	-4.2	72.8	73.3	71.3	2.00	36.694	
600.0	600.0	589.9	588.7	1.2	1.3	95.11	95.11	-7.5	83.8	84.9	82.4	2.45	34.596	
700.0	700.0	687.7	685.5	1.5	1.6	96.75	96.75	-11.5	97.5	99.2	96.3	2.92	33.986	
800.0	800.0	786.6	783.3	1.7	1.9	98.01	98.01	-15.7	111.6	113.9	110.5	3.38	33.678	
900.0	900.0	885.5	881.1	1.9	2.3	98.98	98.98	-19.8	125.6	128.6	124.7	3.85	33.404	
1,000.0	1,000.0	984.4	978.9	2.1	2.6	99.75	99.75	-24.0	139.7	143.3	139.0	4.32	33.161	
1,100.0	1,100.0	1,083.3	1,076.7	2.4	3.0	100.38	100.38	-28.2	153.8	158.1	153.3	4.80	32.947	
1,200.0	1,200.0	1,182.2	1,174.5	2.6	3.3	100.90	100.90	-32.3	167.8	172.8	167.5	5.28	32.759	
1,300.0	1,300.0	1,281.1	1,272.3	2.8	3.7	101.34	101.34	-36.5	181.9	187.6	181.8	5.76	32.593	
1,400.0	1,400.0	1,380.0	1,370.1	3.0	4.0	101.71	101.71	-40.6	196.0	202.4	196.1	6.24	32.447	
1,500.0	1,500.0	1,478.9	1,467.9	3.3	4.4	102.03	102.03	-44.8	210.1	217.2	210.4	6.72	32.317	
1,600.0	1,600.0	1,577.8	1,565.7	3.5	4.7	102.32	102.32	-48.9	224.1	232.0	224.8	7.20	32.200	
1,700.0	1,700.0	1,676.7	1,663.5	3.7	5.1	102.56	102.56	-53.1	238.2	246.8	239.1	7.69	32.096	
1,800.0	1,800.0	1,775.6	1,761.3	3.9	5.5	102.78	102.78	-57.2	252.3	261.6	253.4	8.17	32.002	
1,900.0	1,900.0	1,874.5	1,859.1	4.2	5.8	102.98	102.98	-61.4	266.3	276.4	267.7	8.66	31.917	
2,000.0	2,000.0	1,973.4	1,956.9	4.4	6.2	103.16	103.16	-65.6	280.4	291.2	282.0	9.15	31.839	
2,100.0	2,100.0	2,072.2	2,054.7	4.6	6.5	103.32	103.32	-69.7	294.5	306.0	296.4	9.63	31.768	
2,200.0	2,200.0	2,171.1	2,152.5	4.8	6.9	103.46	103.46	-73.9	308.5	320.8	310.7	10.12	31.704	
2,300.0	2,300.0	2,270.0	2,250.3	5.1	7.2	103.59	103.59	-78.0	322.6	335.6	325.0	10.61	31.644	
2,400.0	2,400.0	2,368.9	2,348.1	5.3	7.6	103.72	103.72	-82.2	336.7	350.4	339.3	11.09	31.589	
2,500.0	2,500.0	2,467.8	2,445.9	5.5	8.0	103.83	103.83	-86.3	350.8	365.3	353.7	11.58	31.538	
2,600.0	2,600.0	2,566.7	2,543.7	5.7	8.3	103.93	103.93	-90.5	364.8	380.1	368.0	12.07	31.491	
2,700.0	2,700.0	2,665.6	2,641.5	6.0	8.7	104.02	104.02	-94.6	378.9	394.9	382.3	12.56	31.447	
2,800.0	2,800.0	2,764.5	2,739.3	6.2	9.0	104.11	104.11	-98.8	393.0	409.7	396.7	13.05	31.406	
2,900.0	2,900.0	2,863.4	2,837.1	6.4	9.4	104.19	104.19	-102.9	407.0	424.5	411.0	13.53	31.368	
3,000.0	3,000.0	2,962.3	2,934.9	6.6	9.8	104.27	104.27	-107.1	421.1	439.4	425.3	14.02	31.332	
3,100.0	3,100.0	3,061.3	3,032.8	6.8	10.1	-49.83	-49.83	-111.3	435.2	453.1	439.0	14.05	32.244	
3,200.0	3,199.8	3,160.6	3,131.0	7.0	10.5	-50.08	-50.08	-115.4	449.3	464.6	450.1	14.48	32.087	
3,300.0	3,299.5	3,260.0	3,229.3	7.2	10.8	-50.67	-50.67	-119.6	463.5	473.9	459.0	14.91	31.786	
3,333.4	3,332.7	3,293.2	3,262.1	7.2	11.0	-50.94	-50.94	-121.0	468.2	476.5	461.5	15.05	31.655	
3,400.0	3,398.8	3,359.4	3,327.6	7.4	11.2	-51.58	-51.58	-123.8	477.6	481.6	466.2	15.35	31.379	
3,500.0	3,498.1	3,458.8	3,425.8	7.6	11.6	-52.52	-52.52	-128.0	491.7	489.3	473.5	15.80	30.975	
3,600.0	3,597.4	3,558.1	3,524.1	7.8	11.9	-53.43	-53.43	-132.1	505.9	497.1	480.9	16.26	30.582	
3,700.0	3,696.8	3,657.5	3,622.4	8.0	12.3	-54.32	-54.32	-136.3	520.0	505.1	488.4	16.72	30.201	
3,800.0	3,796.1	3,756.9	3,720.7	8.2	12.6	-55.17	-55.17	-140.5	534.2	513.2	496.0	17.20	29.832	
3,900.0	3,895.4	3,856.3	3,819.0	8.4	13.0	-56.00	-56.00	-144.7	548.3	521.4	503.7	17.69	29.475	
4,000.0	3,994.7	3,955.7	3,917.3	8.6	13.4	-56.81	-56.81	-148.8	562.4	529.7	511.5	18.18	29.130	
4,100.0	4,094.1	4,055.1	4,015.5	8.9	13.7	-57.59	-57.59	-153.0	576.6	538.1	519.4	18.69	28.796	
4,200.0	4,193.4	4,154.4	4,113.8	9.1	14.1	-58.34	-58.34	-157.2	590.7	546.6	527.4	19.20	28.474	
4,300.0	4,292.7	4,253.8	4,212.1	9.4	14.4	-59.07	-59.07	-161.4	604.9	555.1	535.4	19.71	28.162	
4,400.0	4,392.0	4,353.2	4,310.4	9.6	14.8	-59.78	-59.78	-165.5	619.0	563.8	543.6	20.24	27.862	
4,500.0	4,491.4	4,452.6	4,408.7	9.9	15.2	-60.47	-60.47	-169.7	633.1	572.6	551.8	20.77	27.572	
4,600.0	4,590.7	4,552.0	4,507.0	10.1	15.5	-61.14	-61.14	-173.9	647.3	581.4	560.1	21.30	27.293	
4,700.0	4,690.0	4,651.3	4,605.2	10.4	15.9	-61.79	-61.79	-178.1	661.4	590.3	568.5	21.84	27.024	
4,800.0	4,789.3	4,750.7	4,703.5	10.7	16.2	-62.41	-62.41	-182.2	675.5	599.3	576.9	22.39	26.765	
4,900.0	4,888.6	4,850.1	4,801.8	10.9	16.6	-63.02	-63.02	-186.4	689.7	608.4	585.4	22.94	26.515	

CC - Min centre to center distance or convergent point, SF - min separation factor, ES - min ellipse separation

<b>Company:</b>	PETROLEUM DEVELOPMENT CORP Weld County CO	<b>Local Co-ordinate Reference:</b>	Well Diana 6T-241
<b>Project:</b>	SEC.6-T6N-R65W	<b>TVD Reference:</b>	WELL @ 4810.0ft (Original Well Elev)
<b>Reference Site:</b>	Diana 6T-HZ Pad Sec.6-T6N-R65W	<b>MD Reference:</b>	WELL @ 4810.0ft (Original Well Elev)
<b>Site Error:</b>	0.0ft	<b>North Reference:</b>	True
<b>Reference Well:</b>	Diana 6T-241	<b>Survey Calculation Method:</b>	Minimum Curvature
<b>Well Error:</b>	0.0ft	<b>Output errors are at</b>	2.00 sigma
<b>Reference Wellbore</b>	Wellbore #1	<b>Database:</b>	Landmark
<b>Reference Design:</b>	Plan #1 (1-25-13)	<b>Offset TVD Reference:</b>	Offset Datum

Offset Design Diana 6T-HZ Pad Sec.6-T6N-R65W - Diana 6T-221 - Wellbore #1 - Plan #1 (1-25-13)													Offset Site Error:	0.0 ft
Survey Program: 0-MWD													Offset Well Error:	0.0 ft
Measured Depth (ft)	Vertical Depth (ft)	Measured Depth (ft)	Vertical Depth (ft)	Reference	Offset	Semi Major Axis	Highside Toolface (°)	Offset Wellbore Centre +N/-S (ft)	Offset Wellbore Centre +E/-W (ft)	Between Centres (ft)	Between Ellipses (ft)	Minimum Separation (ft)	Separation Factor	Warning
4,979.2	4,967.3	4,928.8	4,879.6	11.1	16.9	-63.49	-189.7	700.9	615.6	592.2	23.39	26.324		
5,000.0	4,988.0	4,949.5	4,900.1	11.2	17.0	-63.64	-190.6	703.8	617.5	594.0	23.50	26.278		
5,100.0	5,087.6	5,048.9	4,998.4	11.4	17.3	-64.20	-194.8	718.0	627.8	603.8	24.02	26.134		
5,200.0	5,187.4	5,154.1	5,102.4	11.7	17.7	-64.49	-199.1	732.8	639.5	615.0	24.51	26.086		
5,300.0	5,287.4	5,280.9	5,228.4	11.9	18.0	-64.52	-203.3	747.0	649.7	624.8	24.95	26.037		
5,312.6	5,300.0	5,297.0	5,244.4	11.9	18.0	89.71	-203.8	748.4	650.8	625.8	25.01	26.026		
5,400.0	5,387.4	5,408.5	5,355.6	12.1	18.3	89.91	-206.0	755.9	656.7	631.3	25.35	25.900		
5,500.0	5,487.4	5,536.7	5,483.8	12.3	18.4	90.00	-207.0	759.3	659.4	633.6	25.76	25.597		
5,600.0	5,587.4	5,640.3	5,587.4	12.5	18.6	90.00	-207.0	759.4	659.4	633.3	26.14	25.225		
5,700.0	5,687.4	5,740.3	5,687.4	12.7	18.7	90.00	-207.0	759.4	659.4	632.9	26.52	24.869		
5,800.0	5,787.4	5,840.3	5,787.4	12.9	18.8	90.00	-207.0	759.4	659.4	632.5	26.89	24.520		
5,900.0	5,887.4	5,940.3	5,887.4	13.1	19.0	90.00	-207.0	759.4	659.4	632.1	27.27	24.180		
6,000.0	5,987.4	6,040.3	5,987.4	13.3	19.1	90.00	-207.0	759.4	659.4	631.7	27.65	23.846		
6,100.0	6,087.4	6,140.3	6,087.4	13.5	19.3	90.00	-207.0	759.4	659.4	631.4	28.03	23.521		
6,200.0	6,187.4	6,240.3	6,187.4	13.7	19.4	90.00	-207.0	759.4	659.4	631.0	28.42	23.202		
6,259.2	6,246.5	6,299.5	6,246.5	13.8	19.5	90.00	-207.0	759.4	659.4	630.7	28.65	23.017		
6,288.8	6,276.2	6,329.1	6,276.2	13.9	19.5	90.00	-207.0	759.4	659.4	630.6	28.76	22.926		
6,300.0	6,287.4	6,340.3	6,287.4	13.9	19.5	89.96	-206.9	759.4	659.4	630.6	28.80	22.894		
6,350.0	6,337.3	6,390.3	6,337.3	14.0	19.6	89.96	-204.5	759.4	659.4	630.4	28.98	22.757		
6,400.0	6,387.0	6,440.2	6,386.9	14.1	19.7	89.96	-198.9	759.4	659.4	630.3	29.12	22.641		
6,450.0	6,436.2	6,490.2	6,436.1	14.1	19.7	89.96	-190.0	759.4	659.4	630.1	29.25	22.544		
6,500.0	6,484.7	6,540.2	6,484.6	14.2	19.7	89.96	-178.0	759.4	659.4	630.0	29.35	22.463		
6,550.0	6,532.3	6,590.2	6,532.2	14.3	19.8	89.96	-162.8	759.4	659.4	629.9	29.45	22.394		
6,600.0	6,578.8	6,640.2	6,578.7	14.3	19.8	89.96	-144.5	759.4	659.4	629.9	29.53	22.330		
6,650.0	6,624.1	6,690.1	6,623.9	14.4	19.8	89.97	-123.2	759.4	659.4	629.8	29.61	22.267		
6,700.0	6,667.8	6,740.1	6,667.6	14.4	19.8	89.97	-99.0	759.4	659.4	629.7	29.71	22.198		
6,750.0	6,709.9	6,790.1	6,709.7	14.5	19.8	89.97	-72.0	759.5	659.4	629.6	29.82	22.115		
6,800.0	6,750.1	6,840.1	6,749.9	14.5	19.9	89.97	-42.3	759.5	659.4	629.4	29.96	22.012		
6,850.0	6,788.2	6,890.0	6,788.0	14.6	19.9	89.97	-10.1	759.5	659.4	629.2	30.13	21.881		
6,900.0	6,824.2	6,940.0	6,824.0	14.6	19.9	89.97	24.6	759.5	659.4	629.0	30.36	21.717		
6,950.0	6,857.9	6,990.0	6,857.6	14.8	19.9	89.97	61.6	759.5	659.4	628.7	30.65	21.515		
7,000.0	6,889.0	7,040.0	6,888.8	14.9	19.9	89.97	100.6	759.5	659.4	628.4	31.00	21.270		
7,050.0	6,917.5	7,090.0	6,917.3	15.2	20.0	89.97	141.7	759.6	659.4	627.9	31.43	20.981		
7,100.0	6,943.3	7,140.0	6,943.1	15.4	20.1	89.98	184.5	759.6	659.4	627.4	31.93	20.648		
7,150.0	6,966.2	7,189.9	6,966.0	15.7	20.2	89.98	228.9	759.6	659.3	626.8	32.52	20.272		
7,200.0	6,986.2	7,239.9	6,986.0	16.1	20.3	89.98	274.7	759.6	659.3	626.1	33.20	19.859		
7,250.0	7,003.1	7,289.9	7,002.9	16.5	20.5	89.98	321.7	759.7	659.3	625.4	33.96	19.413		
7,300.0	7,016.9	7,339.9	7,016.7	16.9	20.7	89.98	369.8	759.7	659.3	624.5	34.81	18.941		
7,350.0	7,027.5	7,389.9	7,027.4	17.4	20.9	89.99	418.6	759.7	659.3	623.6	35.73	18.451		
7,400.0	7,035.0	7,439.9	7,034.8	17.9	21.3	89.99	468.0	759.7	659.3	622.6	36.73	17.950		
7,450.0	7,039.1	7,489.9	7,039.0	18.5	21.7	89.99	517.8	759.8	659.3	621.5	37.80	17.444		
7,490.9	7,040.1	7,530.8	7,040.0	18.9	22.0	89.99	558.7	759.8	659.3	620.6	38.71	17.033		
7,500.0	7,040.1	7,539.9	7,040.0	19.0	22.1	89.99	567.8	759.8	659.3	620.4	38.92	16.941		
7,600.0	7,039.8	7,639.9	7,039.5	20.3	23.1	89.97	667.8	759.8	659.3	618.0	41.35	15.946		
7,700.0	7,039.5	7,739.9	7,039.0	21.6	24.3	89.95	767.8	759.9	659.3	615.3	43.97	14.995		
7,800.0	7,039.3	7,839.9	7,038.5	23.0	25.5	89.93	867.8	759.9	659.3	612.5	46.76	14.100		
7,900.0	7,039.0	7,939.9	7,038.0	24.5	26.9	89.91	967.8	760.0	659.3	609.6	49.69	13.268		
8,000.0	7,038.7	8,039.9	7,037.5	26.1	28.3	89.89	1,067.8	760.0	659.3	606.5	52.74	12.500		
8,100.0	7,038.4	8,139.9	7,037.0	27.7	29.8	89.87	1,167.8	760.1	659.3	603.4	55.89	11.796		
8,200.0	7,038.1	8,239.9	7,036.4	29.3	31.3	89.85	1,267.8	760.1	659.2	600.1	59.12	11.151		
8,300.0	7,037.9	8,339.9	7,035.9	30.9	32.9	89.83	1,367.8	760.2	659.2	596.8	62.42	10.561		

CC - Min centre to center distance or convergent point, SF - min separation factor, ES - min ellipse separation

<b>Company:</b>	PETROLEUM DEVELOPMENT CORP Weld County CO	<b>Local Co-ordinate Reference:</b>	Well Diana 6T-241
<b>Project:</b>	SEC.6-T6N-R65W	<b>TVD Reference:</b>	WELL @ 4810.0ft (Original Well Elev)
<b>Reference Site:</b>	Diana 6T-HZ Pad Sec.6-T6N-R65W	<b>MD Reference:</b>	WELL @ 4810.0ft (Original Well Elev)
<b>Site Error:</b>	0.0ft	<b>North Reference:</b>	True
<b>Reference Well:</b>	Diana 6T-241	<b>Survey Calculation Method:</b>	Minimum Curvature
<b>Well Error:</b>	0.0ft	<b>Output errors are at</b>	2.00 sigma
<b>Reference Wellbore</b>	Wellbore #1	<b>Database:</b>	Landmark
<b>Reference Design:</b>	Plan #1 (1-25-13)	<b>Offset TVD Reference:</b>	Offset Datum

Offset Design		Diana 6T-HZ Pad Sec.6-T6N-R65W - Diana 6T-221 - Wellbore #1 - Plan #1 (1-25-13)											Offset Site Error:		0.0 ft
Survey Program: 0-MWD													Offset Well Error:		0.0 ft
Reference		Offset		Semi Major Axis			Distance							Warning	
Measured Depth	Vertical Depth	Measured Depth	Vertical Depth	Reference	Offset	Highside Toolface	Offset Wellbore Centre		Between Centres	Between Ellipses	Minimum Separation	Separation Factor			
(ft)	(ft)	(ft)	(ft)	(ft)	(ft)	(°)	+N/-S (ft)	+E/-W (ft)	(ft)	(ft)	(ft)				
8,400.0	7,037.6	8,439.9	7,035.4	32.6	34.5	89.81	1,467.8	760.2	659.2	593.4	65.78	10.021			
8,500.0	7,037.3	8,539.9	7,034.9	34.4	36.1	89.79	1,567.8	760.3	659.2	590.0	69.19	9.527			
8,600.0	7,037.0	8,639.9	7,034.4	36.1	37.8	89.77	1,667.8	760.3	659.2	586.6	72.65	9.074			
8,700.0	7,036.7	8,739.9	7,033.9	37.9	39.5	89.75	1,767.8	760.4	659.2	583.1	76.14	8.658			
8,800.0	7,036.5	8,839.9	7,033.4	39.6	41.2	89.74	1,867.8	760.4	659.2	579.5	79.67	8.274			
8,900.0	7,036.2	8,939.9	7,032.9	41.4	42.9	89.72	1,967.8	760.5	659.2	576.0	83.22	7.921			
9,000.0	7,035.9	9,039.9	7,032.4	43.2	44.7	89.70	2,067.8	760.5	659.2	572.4	86.80	7.594			
9,100.0	7,035.6	9,139.9	7,031.9	45.0	46.4	89.68	2,167.8	760.6	659.2	568.8	90.40	7.292			
9,200.0	7,035.3	9,239.9	7,031.4	46.8	48.2	89.66	2,267.8	760.6	659.2	565.1	94.02	7.011			
9,300.0	7,035.1	9,339.9	7,030.9	48.7	50.0	89.64	2,367.8	760.7	659.1	561.5	97.66	6.750			
9,400.0	7,034.8	9,439.9	7,030.4	50.5	51.7	89.62	2,467.8	760.7	659.1	557.8	101.31	6.506			
9,500.0	7,034.5	9,539.9	7,029.9	52.3	53.5	89.60	2,567.8	760.8	659.1	554.2	104.98	6.279			
9,600.0	7,034.2	9,639.9	7,029.4	54.2	55.4	89.58	2,667.8	760.8	659.1	550.5	108.66	6.066			
9,700.0	7,033.9	9,739.9	7,028.9	56.0	57.2	89.56	2,767.8	760.9	659.1	546.8	112.35	5.867			
9,800.0	7,033.7	9,839.9	7,028.4	57.9	59.0	89.54	2,867.8	760.9	659.1	543.1	116.05	5.679			
9,900.0	7,033.4	9,939.9	7,027.8	59.7	60.8	89.52	2,967.8	761.0	659.1	539.3	119.76	5.503			
10,000.0	7,033.1	10,039.9	7,027.3	61.6	62.7	89.50	3,067.8	761.0	659.1	535.6	123.48	5.338			
10,100.0	7,032.8	10,139.9	7,026.8	63.5	64.5	89.48	3,167.8	761.1	659.1	531.9	127.21	5.181			
10,200.0	7,032.6	10,239.9	7,026.3	65.3	66.3	89.46	3,267.8	761.1	659.1	528.1	130.94	5.033			
10,300.0	7,032.3	10,339.9	7,025.8	67.2	68.2	89.44	3,367.8	761.2	659.1	524.4	134.68	4.894			
10,400.0	7,032.0	10,439.9	7,025.3	69.1	70.0	89.42	3,467.8	761.2	659.1	520.6	138.42	4.761			
10,500.0	7,031.7	10,539.9	7,024.8	71.0	71.9	89.40	3,567.8	761.3	659.1	516.9	142.17	4.636			
10,600.0	7,031.4	10,639.9	7,024.3	72.8	73.7	89.38	3,667.7	761.3	659.0	513.1	145.93	4.516			
10,700.0	7,031.2	10,739.9	7,023.8	74.7	75.6	89.36	3,767.7	761.4	659.0	509.3	149.69	4.403			
10,800.0	7,030.9	10,839.9	7,023.3	76.6	77.5	89.34	3,867.7	761.4	659.0	505.6	153.45	4.295			
10,900.0	7,030.6	10,939.9	7,022.8	78.5	79.3	89.32	3,967.7	761.5	659.0	501.8	157.22	4.192			
11,000.0	7,030.3	11,039.9	7,022.3	80.4	81.2	89.30	4,067.7	761.5	659.0	498.0	161.00	4.093			
11,100.0	7,030.0	11,139.9	7,021.8	82.3	83.1	89.28	4,167.7	761.6	659.0	494.2	164.77	4.000			
11,200.0	7,029.8	11,239.9	7,021.3	84.2	85.0	89.26	4,267.7	761.6	659.0	490.4	168.55	3.910			
11,300.0	7,029.5	11,339.9	7,020.8	86.1	86.8	89.24	4,367.7	761.7	659.0	486.7	172.33	3.824			
11,400.0	7,029.2	11,439.9	7,020.3	88.0	88.7	89.22	4,467.7	761.7	659.0	482.9	176.12	3.742			
11,442.9	7,029.1	11,482.8	7,020.0	88.6	89.5	89.21	4,510.7	761.8	659.0	481.4	177.59	3.711			
11,471.3	7,029.0	11,490.4	7,020.0	89.0	89.7	89.21	4,518.3	761.8	659.3	481.1	178.16	3.701SF			

Diana 6T-HZ Pad Sec.6-T6N-R65W - Diana 6T-401 - Wellbore #1 - Plan #1 (1-25-13)													Offset Site Error:	0.0 ft	
Survey Program: 0-MWD														Offset Well Error:	0.0 ft
Reference		Offset		Semi Major Axis			Distance							Warning	
Measured Depth	Vertical Depth	Measured Depth	Vertical Depth	Reference	Offset	Highside Toolface	Offset Wellbore Centre		Between Centres	Between Ellipses	Minimum Separation	Separation Factor			
(ft)	(ft)	(ft)	(ft)	(ft)	(ft)	(°)	+N/-S (ft)	+E/-W (ft)	(ft)	(ft)	(ft)				
0.0	0.0	0.0	0.0	0.0	0.0	89.98	0.0	27.8	27.8						
100.0	100.0	100.0	100.0	0.1	0.1	89.98	0.0	27.8	27.8	27.6	0.22	123.713			
200.0	200.0	200.0	200.0	0.3	0.3	89.98	0.0	27.8	27.8	27.1	0.67	41.238			
300.0	300.0	300.0	300.0	0.6	0.6	89.98	0.0	27.8	27.8	26.7	1.12	24.743			
400.0	400.0	400.0	400.0	0.8	0.8	89.98	0.0	27.8	27.8	26.2	1.57	17.673			
500.0	500.0	500.0	500.0	1.0	1.0	89.98	0.0	27.8	27.8	25.8	2.02	13.746			
600.0	600.0	600.0	600.0	1.2	1.2	89.98	0.0	27.8	27.8	25.3	2.47	11.247			
700.0	700.0	700.0	700.0	1.5	1.5	89.98	0.0	27.8	27.8	24.9	2.92	9.516			
800.0	800.0	800.0	800.0	1.7	1.7	89.98	0.0	27.8	27.8	24.4	3.37	8.248			
900.0	900.0	900.0	900.0	1.9	1.9	89.98	0.0	27.8	27.8	24.0	3.82	7.277			
1,000.0	1,000.0	1,000.0	1,000.0	2.1	2.1	89.98	0.0	27.8	27.8	23.5	4.27	6.511 CC, ES			
1,100.0	1,100.0	1,099.1	1,099.1	2.4	2.3	91.52	-0.8	29.3	29.4	24.7	4.70	6.248			
1,200.0	1,200.0	1,198.0	1,197.8	2.6	2.5	95.28	-3.1	33.9	34.1	29.0	5.11	6.668			
1,300.0	1,300.0	1,296.4	1,295.8	2.8	2.7	99.62	-7.0	41.4	42.2	36.7	5.54	7.626			
1,400.0	1,400.0	1,395.6	1,394.6	3.0	3.0	103.15	-11.9	50.8	52.5	46.5	5.96	8.802			
1,500.0	1,500.0	1,495.1	1,493.4	3.3	3.2	105.54	-16.8	60.3	62.9	56.5	6.39	9.841			
1,600.0	1,600.0	1,594.5	1,592.3	3.5	3.5	107.24	-21.6	69.7	73.4	66.6	6.83	10.752			
1,700.0	1,700.0	1,693.9	1,691.1	3.7	3.7	108.51	-26.5	79.2	84.0	76.7	7.27	11.553			
1,800.0	1,800.0	1,793.3	1,790.0	3.9	4.0	109.51	-31.4	88.7	94.6	86.9	7.72	12.261			
1,900.0	1,900.0	1,892.8	1,888.8	4.2	4.2	110.30	-36.3	98.1	105.2	97.0	8.16	12.889			
2,000.0	2,000.0	1,992.2	1,987.7	4.4	4.5	110.94	-41.2	107.6	115.8	107.2	8.61	13.450			
2,100.0	2,100.0	2,091.6	2,086.5	4.6	4.8	111.48	-46.0	117.0	126.5	117.4	9.06	13.953			
2,200.0	2,200.0	2,191.1	2,185.4	4.8	5.1	111.93	-50.9	126.5	137.1	127.6	9.52	14.407			
2,300.0	2,300.0	2,290.5	2,284.2	5.1	5.4	112.32	-55.8	135.9	147.8	137.8	9.97	14.817			
2,400.0	2,400.0	2,389.9	2,383.1	5.3	5.6	112.66	-60.7	145.4	158.5	148.0	10.43	15.190			
2,500.0	2,500.0	2,489.3	2,482.0	5.5	5.9	112.95	-65.6	154.8	169.1	158.2	10.89	15.530			
2,600.0	2,600.0	2,588.8	2,580.8	5.7	6.2	113.21	-70.5	164.3	179.8	168.4	11.35	15.841			
2,700.0	2,700.0	2,688.2	2,679.7	6.0	6.5	113.44	-75.3	173.8	190.5	178.7	11.81	16.128			
2,800.0	2,800.0	2,787.6	2,778.5	6.2	6.8	113.64	-80.2	183.2	201.2	188.9	12.27	16.391			
2,900.0	2,900.0	2,887.0	2,877.4	6.4	7.1	113.83	-85.1	192.7	211.8	199.1	12.73	16.635			
3,000.0	3,000.0	2,986.5	2,976.2	6.6	7.4	114.00	-90.0	202.1	222.5	209.3	13.20	16.861			
3,100.0	3,100.0	3,086.0	3,075.2	6.8	7.7	-40.22	-94.9	211.6	231.9	218.4	13.51	17.167			
3,200.0	3,199.8	3,185.7	3,174.4	7.0	8.0	-40.80	-99.8	221.1	238.6	224.7	13.91	17.156			
3,300.0	3,299.5	3,285.5	3,273.6	7.2	8.3	-41.91	-104.7	230.6	242.7	228.4	14.31	16.964			
3,333.4	3,332.7	3,318.9	3,306.8	7.2	8.4	-42.41	-106.3	233.7	243.6	229.1	14.44	16.863			
3,400.0	3,398.8	3,385.3	3,372.8	7.4	8.6	-43.46	-109.6	240.0	245.0	230.3	14.73	16.638			
3,500.0	3,498.1	3,485.0	3,471.9	7.6	8.9	-45.03	-114.4	249.5	247.3	232.2	15.16	16.315			
3,600.0	3,597.4	3,584.8	3,571.1	7.8	9.2	-46.56	-119.3	259.0	249.8	234.2	15.60	16.012			
3,700.0	3,696.8	3,684.5	3,670.3	8.0	9.5	-48.06	-124.2	268.5	252.5	236.4	16.05	15.726			
3,800.0	3,796.1	3,784.3	3,769.5	8.2	9.8	-49.53	-129.1	278.0	255.3	238.8	16.52	15.457			
3,900.0	3,895.4	3,884.0	3,868.6	8.4	10.1	-50.97	-134.0	287.5	258.3	241.3	16.99	15.203			
4,000.0	3,994.7	3,983.8	3,967.8	8.6	10.4	-52.37	-138.9	297.0	261.5	244.0	17.47	14.964			
4,100.0	4,094.1	4,083.5	4,067.0	8.9	10.7	-53.74	-143.8	306.4	264.8	246.8	17.96	14.739			
4,200.0	4,193.4	4,183.3	4,166.2	9.1	11.0	-55.07	-148.7	315.9	268.2	249.8	18.46	14.527			
4,300.0	4,292.7	4,283.0	4,265.3	9.4	11.3	-56.37	-153.6	325.4	271.8	252.9	18.97	14.327			
4,400.0	4,392.0	4,382.8	4,364.5	9.6	11.6	-57.64	-158.5	334.9	275.6	256.1	19.49	14.138			
4,500.0	4,491.4	4,482.5	4,463.7	9.9	11.9	-58.87	-163.4	344.4	279.4	259.4	20.02	13.960			
4,600.0	4,490.7	4,482.2	4,462.0	10.1	12.2	-60.07	-168.3	353.9	283.4	262.9	20.55	13.792			
4,700.0	4,490.0	4,482.0	4,462.0	10.4	12.5	-61.23	-173.2	363.4	287.6	266.5	21.09	13.634			
4,800.0	4,789.3	4,781.7	4,761.2	10.7	12.8	-62.36	-178.1	372.8	291.8	270.1	21.64	13.485			
4,900.0	4,888.6	4,881.5	4,860.4	10.9	13.1	-63.46	-183.0	382.3	296.1	273.9	22.19	13.345			

<b>Company:</b>	PETROLEUM DEVELOPMENT CORP Weld County CO	<b>Local Co-ordinate Reference:</b>	Well Diana 6T-241
<b>Project:</b>	SEC.6-T6N-R65W	<b>TVD Reference:</b>	WELL @ 4810.0ft (Original Well Elev)
<b>Reference Site:</b>	Diana 6T-HZ Pad Sec.6-T6N-R65W	<b>MD Reference:</b>	WELL @ 4810.0ft (Original Well Elev)
<b>Site Error:</b>	0.0ft	<b>North Reference:</b>	True
<b>Reference Well:</b>	Diana 6T-241	<b>Survey Calculation Method:</b>	Minimum Curvature
<b>Well Error:</b>	0.0ft	<b>Output errors are at</b>	2.00 sigma
<b>Reference Wellbore</b>	Wellbore #1	<b>Database:</b>	Landmark
<b>Reference Design:</b>	Plan #1 (1-25-13)	<b>Offset TVD Reference:</b>	Offset Datum

Offset Design Diana 6T-HZ Pad Sec.6-T6N-R65W - Diana 6T-401 - Wellbore #1 - Plan #1 (1-25-13)													Offset Site Error:	0.0 ft
Survey Program: 0-MWD													Offset Well Error:	0.0 ft
Measured Depth (ft)	Vertical Depth (ft)	Measured Depth (ft)	Vertical Depth (ft)	Reference	Offset	Semi Major Axis	Highside Toolface (°)	Offset Wellbore Centre +N/-S (ft)	Offset Wellbore Centre +E/-W (ft)	Between Centres (ft)	Between Ellipses (ft)	Minimum Separation (ft)	Separation Factor	Warning
4,979.2	4,967.3	4,960.5	4,938.9	11.1	13.3	-64.31		-186.9	389.8	299.6	277.0	22.63	13.239	
5,000.0	4,988.0	4,981.2	4,959.5	11.2	13.4	-64.53		-187.9	391.8	300.6	277.9	22.75	13.215	
5,100.0	5,087.6	5,081.0	5,058.8	11.4	13.7	-65.24		-192.8	401.3	306.2	282.9	23.27	13.159	
5,200.0	5,187.4	5,180.8	5,157.9	11.7	14.0	-65.38		-197.7	410.8	313.2	289.5	23.75	13.191	
5,300.0	5,287.4	5,287.4	5,264.0	11.9	14.3	-64.99		-202.5	420.2	321.0	296.9	24.17	13.282	
5,312.6	5,300.0	5,301.4	5,278.0	11.9	14.3	89.29		-203.0	421.1	321.9	297.7	24.22	13.290	
5,400.0	5,387.4	5,398.3	5,374.7	12.1	14.5	89.78		-205.7	426.4	326.6	302.1	24.55	13.306	
5,500.0	5,487.4	5,509.6	5,485.9	12.3	14.7	90.00		-207.0	428.8	328.8	303.8	24.93	13.187	
5,600.0	5,587.4	5,611.0	5,587.4	12.5	14.8	90.00		-207.0	428.8	328.8	303.5	25.32	12.984	
5,700.0	5,687.4	5,711.0	5,687.4	12.7	15.0	90.00		-207.0	428.8	328.8	303.1	25.71	12.789	
5,800.0	5,787.4	5,811.0	5,787.4	12.9	15.2	90.00		-207.0	428.8	328.8	302.7	26.10	12.598	
5,900.0	5,887.4	5,911.0	5,887.4	13.1	15.3	90.00		-207.0	428.8	328.8	302.3	26.49	12.412	
6,000.0	5,987.4	6,011.0	5,987.4	13.3	15.5	90.00		-207.0	428.8	328.8	301.9	26.88	12.231	
6,100.0	6,087.4	6,111.0	6,087.4	13.5	15.7	90.00		-207.0	428.8	328.8	301.5	27.28	12.054	
6,200.0	6,187.4	6,211.0	6,187.4	13.7	15.8	90.00		-207.0	428.8	328.8	301.1	27.67	11.882	
6,288.8	6,276.2	6,299.8	6,276.2	13.9	16.0	90.00		-207.0	428.8	328.8	300.8	28.03	11.732	
6,300.0	6,287.4	6,311.0	6,287.4	13.9	16.0	89.98		-207.0	428.8	328.8	300.7	28.07	11.714	
6,307.0	6,294.3	6,317.9	6,294.3	13.9	16.0	90.00		-207.0	428.8	328.8	300.7	28.09	11.704	
6,350.0	6,337.3	6,360.9	6,337.3	14.0	16.1	90.39		-207.0	428.8	328.8	300.6	28.24	11.644	
6,400.0	6,387.0	6,410.6	6,387.0	14.1	16.2	91.36		-207.0	428.8	328.9	300.5	28.37	11.593	
6,450.0	6,436.2	6,459.8	6,436.2	14.1	16.3	92.85		-207.0	428.8	329.2	300.8	28.47	11.565	
6,500.0	6,484.7	6,509.8	6,486.1	14.2	16.3	94.71		-206.0	428.8	330.0	301.4	28.53	11.565	
6,550.0	6,532.3	6,560.8	6,536.9	14.3	16.4	96.58		-201.6	428.8	331.1	302.5	28.58	11.585	
6,600.0	6,578.8	6,612.5	6,588.1	14.3	16.5	98.42		-193.7	428.8	332.6	304.0	28.61	11.623	
6,650.0	6,624.1	6,665.2	6,639.4	14.4	16.5	100.23		-182.2	428.8	334.4	305.7	28.63	11.678	
6,700.0	6,667.8	6,718.6	6,690.6	14.4	16.6	101.99		-166.9	428.8	336.5	307.8	28.64	11.747	
6,750.0	6,709.9	6,773.0	6,741.5	14.5	16.6	103.69		-147.6	428.8	338.8	310.2	28.65	11.826	
6,800.0	6,750.1	6,828.3	6,791.6	14.5	16.7	105.33		-124.5	428.8	341.4	312.8	28.66	11.911	
6,850.0	6,788.2	6,884.4	6,840.8	14.6	16.7	106.89		-97.3	428.9	344.2	315.5	28.69	11.998	
6,900.0	6,824.2	6,941.5	6,888.5	14.6	16.7	108.37		-66.0	428.9	347.0	318.3	28.73	12.081	
6,950.0	6,857.9	6,999.5	6,934.4	14.8	16.7	109.75		-30.7	428.9	350.0	321.2	28.79	12.154	
7,000.0	6,889.0	7,058.4	6,978.2	14.9	16.8	111.04		8.7	428.9	352.9	324.0	28.91	12.208	
7,050.0	6,917.5	7,118.1	7,019.4	15.2	16.8	112.23		51.9	428.9	355.7	326.7	29.07	12.237	
7,100.0	6,943.3	7,178.6	7,057.6	15.4	16.8	113.30		98.9	429.0	358.5	329.2	29.30	12.233	
7,150.0	6,966.2	7,240.0	7,092.4	15.7	16.9	114.25		149.4	429.0	361.0	331.4	29.60	12.199	
7,200.0	6,986.2	7,302.0	7,123.3	16.1	17.0	115.09		203.1	429.0	363.4	333.4	29.99	12.117	
7,250.0	7,003.1	7,364.7	7,150.0	16.5	17.3	115.80		259.8	429.1	365.4	334.9	30.48	11.989	
7,300.0	7,016.9	7,427.9	7,172.2	16.9	17.7	116.38		319.0	429.1	367.1	336.1	31.08	11.814	
7,350.0	7,027.5	7,491.5	7,189.5	17.4	18.2	116.82		380.2	429.1	368.5	336.7	31.78	11.595	
7,400.0	7,035.0	7,555.5	7,201.7	17.9	18.8	117.14		443.0	429.1	369.5	336.9	32.60	11.333	
7,450.0	7,039.1	7,613.1	7,208.5	18.5	19.4	117.35		500.2	429.2	370.2	336.8	33.46	11.064	
7,490.9	7,040.1	7,653.9	7,212.7	18.9	19.8	117.69		540.8	429.2	371.7	337.6	34.10	10.900	
7,500.0	7,040.1	7,662.9	7,213.7	19.0	19.9	117.83		549.7	429.2	372.2	338.0	34.25	10.867	
7,600.0	7,039.8	7,780.9	7,220.0	20.3	21.3	118.73		667.5	429.3	374.9	338.6	36.34	10.316	
7,700.0	7,039.5	7,881.9	7,219.8	21.6	22.7	118.74		768.5	429.3	374.9	336.2	38.69	9.689	
7,800.0	7,039.3	7,981.9	7,219.5	23.0	24.0	118.74		868.5	429.3	374.9	333.7	41.18	9.103	
7,900.0	7,039.0	8,081.9	7,219.2	24.5	25.5	118.74		968.5	429.4	374.8	331.0	43.80	8.558	
8,000.0	7,038.7	8,181.9	7,218.9	26.1	27.0	118.74		1,068.5	429.4	374.8	328.3	46.53	8.056	
8,100.0	7,038.4	8,281.9	7,218.6	27.7	28.5	118.74		1,168.5	429.5	374.8	325.5	49.35	7.596	
8,200.0	7,038.1	8,381.9	7,218.3	29.3	30.1	118.74		1,268.5	429.5	374.8	322.6	52.24	7.175	
8,300.0	7,037.9	8,481.9	7,218.1	30.9	31.8	118.74		1,368.5	429.6	374.8	319.6	55.19	6.790	

CC - Min centre to center distance or convergent point, SF - min separation factor, ES - min ellipse separation

<b>Company:</b>	PETROLEUM DEVELOPMENT CORP Weld County CO	<b>Local Co-ordinate Reference:</b>	Well Diana 6T-241
<b>Project:</b>	SEC.6-T6N-R65W	<b>TVD Reference:</b>	WELL @ 4810.0ft (Original Well Elev)
<b>Reference Site:</b>	Diana 6T-HZ Pad Sec.6-T6N-R65W	<b>MD Reference:</b>	WELL @ 4810.0ft (Original Well Elev)
<b>Site Error:</b>	0.0ft	<b>North Reference:</b>	True
<b>Reference Well:</b>	Diana 6T-241	<b>Survey Calculation Method:</b>	Minimum Curvature
<b>Well Error:</b>	0.0ft	<b>Output errors are at</b>	2.00 sigma
<b>Reference Wellbore</b>	Wellbore #1	<b>Database:</b>	Landmark
<b>Reference Design:</b>	Plan #1 (1-25-13)	<b>Offset TVD Reference:</b>	Offset Datum

Offset Design Diana 6T-HZ Pad Sec.6-T6N-R65W - Diana 6T-401 - Wellbore #1 - Plan #1 (1-25-13)												Offset Site Error: 0.0 ft	
Survey Program: 0-MWD												Offset Well Error: 0.0 ft	
Reference		Offset		Semi Major Axis			Distance						Warning
Measured Depth	Vertical Depth	Measured Depth	Vertical Depth	Reference	Offset	Highside Toolface	Offset Wellbore Centre		Between Centres	Between Ellipses	Minimum Separation	Separation Factor	
(ft)	(ft)	(ft)	(ft)	(ft)	(ft)	(°)	+N/-S (ft)	+E/-W (ft)	(ft)	(ft)	(ft)		
8,400.0	7,037.6	8,581.9	7,217.8	32.6	33.4	118.74	1,468.5	429.6	374.8	316.6	58.20	6.439	
8,500.0	7,037.3	8,681.9	7,217.5	34.4	35.1	118.74	1,568.5	429.6	374.7	313.5	61.26	6.117	
8,600.0	7,037.0	8,781.9	7,217.2	36.1	36.8	118.74	1,668.5	429.7	374.7	310.4	64.35	5.823	
8,700.0	7,036.7	8,881.9	7,216.9	37.9	38.5	118.74	1,768.5	429.7	374.7	307.2	67.48	5.553	
8,800.0	7,036.5	8,981.9	7,216.6	39.6	40.3	118.74	1,868.5	429.8	374.7	304.0	70.64	5.304	
8,900.0	7,036.2	9,081.9	7,216.3	41.4	42.0	118.74	1,968.5	429.8	374.7	300.8	73.82	5.075	
9,000.0	7,035.9	9,181.9	7,216.0	43.2	43.8	118.74	2,068.5	429.9	374.6	297.6	77.03	4.864	
9,100.0	7,035.6	9,281.9	7,215.8	45.0	45.6	118.74	2,168.5	429.9	374.6	294.4	80.26	4.668	
9,200.0	7,035.3	9,381.9	7,215.5	46.8	47.4	118.74	2,268.5	430.0	374.6	291.1	83.50	4.486	
9,300.0	7,035.1	9,481.9	7,215.2	48.7	49.2	118.74	2,368.5	430.0	374.6	287.8	86.76	4.318	
9,400.0	7,034.8	9,581.9	7,214.9	50.5	51.0	118.74	2,468.5	430.0	374.6	284.5	90.03	4.160	
9,500.0	7,034.5	9,681.9	7,214.6	52.3	52.8	118.74	2,568.5	430.1	374.6	281.2	93.32	4.014	
9,600.0	7,034.2	9,781.9	7,214.3	54.2	54.7	118.74	2,668.5	430.1	374.5	277.9	96.61	3.877	
9,700.0	7,033.9	9,881.9	7,214.0	56.0	56.5	118.74	2,768.5	430.2	374.5	274.6	99.92	3.748	
9,800.0	7,033.7	9,981.9	7,213.8	57.9	58.4	118.74	2,868.5	430.2	374.5	271.3	103.23	3.628	
9,900.0	7,033.4	10,081.9	7,213.5	59.7	60.2	118.74	2,968.5	430.3	374.5	267.9	106.56	3.514	
10,000.0	7,033.1	10,181.9	7,213.2	61.6	62.1	118.74	3,068.5	430.3	374.5	264.6	109.89	3.408	
10,100.0	7,032.8	10,281.9	7,212.9	63.5	63.9	118.74	3,168.5	430.3	374.4	261.2	113.23	3.307	
10,200.0	7,032.6	10,381.9	7,212.6	65.3	65.8	118.74	3,268.5	430.4	374.4	257.9	116.57	3.212	
10,300.0	7,032.3	10,481.9	7,212.3	67.2	67.6	118.74	3,368.5	430.4	374.4	254.5	119.92	3.122	
10,400.0	7,032.0	10,581.9	7,212.0	69.1	69.5	118.74	3,468.5	430.5	374.4	251.1	123.27	3.037	
10,500.0	7,031.7	10,681.9	7,211.7	71.0	71.4	118.75	3,568.5	430.5	374.4	247.7	126.63	2.956	
10,600.0	7,031.4	10,781.9	7,211.5	72.8	73.2	118.75	3,668.5	430.6	374.3	244.4	130.00	2.880	
10,700.0	7,031.2	10,881.9	7,211.2	74.7	75.1	118.75	3,768.5	430.6	374.3	241.0	133.37	2.807	
10,800.0	7,030.9	10,981.9	7,210.9	76.6	77.0	118.75	3,868.5	430.6	374.3	237.6	136.74	2.737	
10,900.0	7,030.6	11,081.9	7,210.6	78.5	78.9	118.75	3,968.5	430.7	374.3	234.2	140.11	2.671	
11,000.0	7,030.3	11,181.9	7,210.3	80.4	80.7	118.75	4,068.5	430.7	374.3	230.8	143.49	2.608	
11,100.0	7,030.0	11,281.9	7,210.0	82.3	82.6	118.75	4,168.5	430.8	374.3	227.4	146.87	2.548	
11,200.0	7,029.8	11,381.9	7,209.7	84.2	84.5	118.75	4,268.5	430.8	374.2	224.0	150.26	2.491	
11,300.0	7,029.5	11,481.9	7,209.5	86.1	86.4	118.75	4,368.5	430.9	374.2	220.6	153.64	2.436	
11,400.0	7,029.2	11,581.9	7,209.2	88.0	88.3	118.75	4,468.5	430.9	374.2	217.2	157.03	2.383	
11,448.4	7,029.1	11,630.3	7,209.0	88.7	89.1	118.75	4,516.8	430.9	374.2	215.8	158.40	2.362	
11,471.3	7,029.0	11,642.0	7,209.0	89.0	89.3	118.75	4,528.5	430.9	374.4	215.5	158.87	2.356 SF	

<b>Company:</b>	PETROLEUM DEVELOPMENT CORP Weld County CO	<b>Local Co-ordinate Reference:</b>	Well Diana 6T-241
<b>Project:</b>	SEC.6-T6N-R65W	<b>TVD Reference:</b>	WELL @ 4810.0ft (Original Well Elev)
<b>Reference Site:</b>	Diana 6T-HZ Pad Sec.6-T6N-R65W	<b>MD Reference:</b>	WELL @ 4810.0ft (Original Well Elev)
<b>Site Error:</b>	0.0ft	<b>North Reference:</b>	True
<b>Reference Well:</b>	Diana 6T-241	<b>Survey Calculation Method:</b>	Minimum Curvature
<b>Well Error:</b>	0.0ft	<b>Output errors are at</b>	2.00 sigma
<b>Reference Wellbore</b>	Wellbore #1	<b>Database:</b>	Landmark
<b>Reference Design:</b>	Plan #1 (1-25-13)	<b>Offset TVD Reference:</b>	Offset Datum

Offset Design Diana 6T-HZ Pad Sec.6-T6N-R65W - Harsh 2 (Exist.) - Wellbore #1 - Wellbore #1													Offset Site Error: 0.0 ft	
Survey Program: 7300-UNKNOWN													Offset Well Error: 0.0 ft	
Reference		Offset		Semi Major Axis			Distance						Warning	
Measured Depth	Vertical Depth	Measured Depth	Vertical Depth	Reference	Offset	Highside Toolface	Offset Wellbore Centre		Between Centres	Between Ellipses	Minimum Separation	Separation Factor		
(ft)	(ft)	(ft)	(ft)	(ft)	(ft)	(°)	+N/-S (ft)	+E/-W (ft)	(ft)	(ft)	(ft)			
0.0	0.0	14.0	14.0	0.0	0.3	-2.15	4,441.1	-166.8	4,444.2	4,443.9	0.28	N/A		
100.0	100.0	114.0	114.0	0.1	2.3	-2.15	4,441.1	-166.8	4,444.2	4,441.8	2.39	1,857.490		
200.0	200.0	214.0	214.0	0.3	4.3	-2.15	4,441.1	-166.8	4,444.2	4,439.6	4.62	962.500		
300.0	300.0	314.0	314.0	0.6	6.3	-2.15	4,441.1	-166.8	4,444.2	4,437.4	6.84	649.536		
400.0	400.0	414.0	414.0	0.8	8.3	-2.15	4,441.1	-166.8	4,444.2	4,435.1	9.07	490.157		
500.0	500.0	514.0	514.0	1.0	10.3	-2.15	4,441.1	-166.8	4,444.2	4,432.9	11.29	393.583		
600.0	600.0	614.0	614.0	1.2	12.3	-2.15	4,441.1	-166.8	4,444.2	4,430.7	13.52	328.800		
700.0	700.0	714.0	714.0	1.5	14.3	-2.15	4,441.1	-166.8	4,444.2	4,428.5	15.74	282.329		
800.0	800.0	814.0	814.0	1.7	16.3	-2.15	4,441.1	-166.8	4,444.2	4,426.2	17.97	247.368		
900.0	900.0	914.0	914.0	1.9	18.3	-2.15	4,441.1	-166.8	4,444.2	4,424.0	20.19	220.111		
1,000.0	1,000.0	1,014.0	1,014.0	2.1	20.3	-2.15	4,441.1	-166.8	4,444.2	4,421.8	22.42	198.265		
1,100.0	1,100.0	1,114.0	1,114.0	2.4	22.3	-2.15	4,441.1	-166.8	4,444.2	4,419.6	24.64	180.363		
1,200.0	1,200.0	1,214.0	1,214.0	2.6	24.3	-2.15	4,441.1	-166.8	4,444.2	4,417.3	26.86	165.427		
1,300.0	1,300.0	1,314.0	1,314.0	2.8	26.3	-2.15	4,441.1	-166.8	4,444.2	4,415.1	29.09	152.775		
1,400.0	1,400.0	1,414.0	1,414.0	3.0	28.3	-2.15	4,441.1	-166.8	4,444.2	4,412.9	31.31	141.921		
1,500.0	1,500.0	1,514.0	1,514.0	3.3	30.3	-2.15	4,441.1	-166.8	4,444.2	4,410.7	33.54	132.507		
1,600.0	1,600.0	1,614.0	1,614.0	3.5	32.3	-2.15	4,441.1	-166.8	4,444.2	4,408.4	35.76	124.264		
1,700.0	1,700.0	1,714.0	1,714.0	3.7	34.3	-2.15	4,441.1	-166.8	4,444.2	4,406.2	37.99	116.987		
1,800.0	1,800.0	1,814.0	1,814.0	3.9	36.3	-2.15	4,441.1	-166.8	4,444.2	4,404.0	40.21	110.515		
1,900.0	1,900.0	1,914.0	1,914.0	4.2	38.3	-2.15	4,441.1	-166.8	4,444.2	4,401.8	42.44	104.721		
2,000.0	2,000.0	2,014.0	2,014.0	4.4	40.3	-2.15	4,441.1	-166.8	4,444.2	4,399.5	44.66	99.505		
2,100.0	2,100.0	2,114.0	2,114.0	4.6	42.3	-2.15	4,441.1	-166.8	4,444.2	4,397.3	46.89	94.783		
2,200.0	2,200.0	2,214.0	2,214.0	4.8	44.3	-2.15	4,441.1	-166.8	4,444.2	4,395.1	49.11	90.490		
2,300.0	2,300.0	2,314.0	2,314.0	5.1	46.3	-2.15	4,441.1	-166.8	4,444.2	4,392.9	51.34	86.568		
2,400.0	2,400.0	2,414.0	2,414.0	5.3	48.3	-2.15	4,441.1	-166.8	4,444.2	4,390.6	53.56	82.973		
2,500.0	2,500.0	2,514.0	2,514.0	5.5	50.3	-2.15	4,441.1	-166.8	4,444.2	4,388.4	55.79	79.664		
2,600.0	2,600.0	2,614.0	2,614.0	5.7	52.3	-2.15	4,441.1	-166.8	4,444.2	4,386.2	58.01	76.609		
2,700.0	2,700.0	2,714.0	2,714.0	6.0	54.3	-2.15	4,441.1	-166.8	4,444.2	4,384.0	60.24	73.779		
2,800.0	2,800.0	2,814.0	2,814.0	6.2	56.3	-2.15	4,441.1	-166.8	4,444.2	4,381.7	62.46	71.151		
2,900.0	2,900.0	2,914.0	2,914.0	6.4	58.3	-2.15	4,441.1	-166.8	4,444.2	4,379.5	64.69	68.704		
3,000.0	3,000.0	3,014.0	3,014.0	6.6	60.3	-2.15	4,441.1	-166.8	4,444.2	4,377.3	66.91	66.420		
3,100.0	3,100.0	3,114.0	3,114.0	6.8	62.3	-156.36	4,441.1	-166.8	4,445.8	4,376.7	69.07	64.364		
3,200.0	3,199.8	3,213.8	3,213.8	7.0	64.3	-156.35	4,441.1	-166.8	4,450.6	4,379.5	71.13	62.566		
3,300.0	3,299.5	3,313.5	3,313.5	7.2	66.3	-156.33	4,441.1	-166.8	4,458.6	4,385.5	73.11	60.981		
3,333.4	3,332.7	3,346.7	3,346.7	7.2	66.9	-156.32	4,441.1	-166.8	4,462.0	4,388.2	73.76	60.496		
3,400.0	3,398.8	3,412.8	3,412.8	7.4	68.3	-156.36	4,441.1	-166.8	4,469.0	4,393.9	75.19	59.435		
3,500.0	3,498.1	3,512.1	3,512.1	7.6	70.2	-156.42	4,441.1	-166.8	4,479.7	4,402.3	77.35	57.913		
3,600.0	3,597.4	3,611.4	3,611.4	7.8	72.2	-156.48	4,441.1	-166.8	4,490.4	4,410.8	79.52	56.471		
3,700.0	3,696.8	3,710.8	3,710.8	8.0	74.2	-156.54	4,441.1	-166.8	4,501.0	4,419.3	81.68	55.103		
3,800.0	3,796.1	3,810.1	3,810.1	8.2	76.2	-156.60	4,441.1	-166.8	4,511.7	4,427.8	83.85	53.804		
3,900.0	3,895.4	3,909.4	3,909.4	8.4	78.2	-156.66	4,441.1	-166.8	4,522.4	4,436.3	86.03	52.569		
4,000.0	3,994.7	4,008.7	4,008.7	8.6	80.2	-156.72	4,441.1	-166.8	4,533.0	4,444.8	88.20	51.393		
4,100.0	4,094.1	4,108.1	4,108.1	8.9	82.2	-156.77	4,441.1	-166.8	4,543.7	4,453.3	90.38	50.272		
4,200.0	4,193.4	4,207.4	4,207.4	9.1	84.1	-156.83	4,441.1	-166.8	4,554.4	4,461.8	92.56	49.203		
4,300.0	4,292.7	4,306.7	4,306.7	9.4	86.1	-156.89	4,441.1	-166.8	4,565.1	4,470.3	94.75	48.182		
4,400.0	4,392.0	4,406.0	4,406.0	9.6	88.1	-156.95	4,441.1	-166.8	4,575.8	4,478.8	96.93	47.206		
4,500.0	4,491.4	4,505.4	4,505.4	9.9	90.1	-157.00	4,441.1	-166.8	4,586.5	4,487.4	99.12	46.272		
4,600.0	4,590.7	4,604.7	4,604.7	10.1	92.1	-157.06	4,441.1	-166.8	4,597.2	4,495.9	101.31	45.378		
4,700.0	4,690.0	4,704.0	4,704.0	10.4	94.1	-157.11	4,441.1	-166.8	4,607.9	4,504.4	103.50	44.521		
4,800.0	4,789.3	4,803.3	4,803.3	10.7	96.1	-157.17	4,441.1	-166.8	4,618.6	4,512.9	105.69	43.698		
4,900.0	4,888.6	4,902.6	4,902.6	10.9	98.1	-157.23	4,441.1	-166.8	4,629.3	4,521.4	107.89	42.909		

CC - Min centre to center distance or convergent point, SF - min separation factor, ES - min ellipse separation

Offset Design Diana 6T-HZ Pad Sec.6-T6N-R65W - Harsh 2 (Exist.) - Wellbore #1 - Wellbore #1												Offset Site Error:	0.0 ft	
Survey Program: 7300-UNKNOWN												Offset Well Error:	0.0 ft	
Reference		Offset		Semi Major Axis			Distance		Between Centres		Between Ellipses	Minimum Separation	Separation Factor	Warning
Measured Depth (ft)	Vertical Depth (ft)	Measured Depth (ft)	Vertical Depth (ft)	Reference (ft)	Offset (ft)	Highside Toolface (°)	Offset Wellbore Centre +N/-S (ft)	+E/-W (ft)	Between Centres (ft)	Between Ellipses (ft)	Minimum Separation (ft)	Separation Factor		
4,979.2	4,967.3	4,981.3	4,981.3	11.1	99.6	-157.27	4,441.1	-166.8	4,637.8	4,528.2	109.62	42.306		
5,000.0	4,988.0	5,002.0	5,002.0	11.2	100.0	-157.30	4,441.1	-166.8	4,640.0	4,529.8	110.16	42.122		
5,100.0	5,087.6	5,101.6	5,101.6	11.4	102.0	-157.41	4,441.1	-166.8	4,648.4	4,535.8	112.65	41.264		
5,200.0	5,187.4	5,201.4	5,201.4	11.7	104.0	-157.47	4,441.1	-166.8	4,653.7	4,538.6	115.04	40.453		
5,300.0	5,287.4	5,301.4	5,301.4	11.9	106.0	-157.50	4,441.1	-166.8	4,655.7	4,538.4	117.32	39.685		
5,312.6	5,300.0	5,314.0	5,314.0	11.9	106.3	-3.29	4,441.1	-166.8	4,655.7	4,538.1	117.59	39.592		
5,400.0	5,387.4	5,401.4	5,401.4	12.1	108.0	-3.29	4,441.1	-166.8	4,655.7	4,536.2	119.52	38.954		
5,500.0	5,487.4	5,501.4	5,501.4	12.3	110.0	-3.29	4,441.1	-166.8	4,655.7	4,534.0	121.73	38.246		
5,600.0	5,587.4	5,601.4	5,601.4	12.5	112.0	-3.29	4,441.1	-166.8	4,655.7	4,531.8	123.94	37.563		
5,700.0	5,687.4	5,701.4	5,701.4	12.7	114.0	-3.29	4,441.1	-166.8	4,655.7	4,529.6	126.16	36.904		
5,800.0	5,787.4	5,801.4	5,801.4	12.9	116.0	-3.29	4,441.1	-166.8	4,655.7	4,527.3	128.37	36.267		
5,900.0	5,887.4	5,901.4	5,901.4	13.1	118.0	-3.29	4,441.1	-166.8	4,655.7	4,525.1	130.59	35.652		
6,000.0	5,987.4	6,001.4	6,001.4	13.3	120.0	-3.29	4,441.1	-166.8	4,655.7	4,522.9	132.80	35.057		
6,100.0	6,087.4	6,101.4	6,101.4	13.5	122.0	-3.29	4,441.1	-166.8	4,655.7	4,520.7	135.02	34.482		
6,200.0	6,187.4	6,201.4	6,201.4	13.7	124.0	-3.29	4,441.1	-166.8	4,655.7	4,518.5	137.23	33.925		
6,288.8	6,276.2	6,290.2	6,290.2	13.9	125.8	-3.29	4,441.1	-166.8	4,655.7	4,516.5	139.20	33.446		
6,300.0	6,287.4	6,301.4	6,301.4	13.9	126.0	-3.32	4,441.1	-166.8	4,655.6	4,516.2	139.43	33.390		
6,350.0	6,337.3	6,351.3	6,351.3	14.0	127.0	-3.33	4,441.1	-166.8	4,653.3	4,513.2	140.09	33.216		
6,400.0	6,387.0	6,401.0	6,401.0	14.1	128.0	-3.36	4,441.1	-166.8	4,647.6	4,507.5	140.15	33.163		
6,450.0	6,436.2	6,450.2	6,450.2	14.1	129.0	-3.41	4,441.1	-166.8	4,638.8	4,499.2	139.59	33.233		
6,500.0	6,484.7	6,498.7	6,498.7	14.2	130.0	-3.47	4,441.1	-166.8	4,626.8	4,488.4	138.40	33.430		
6,550.0	6,532.3	6,546.3	6,546.3	14.3	130.9	-3.56	4,441.1	-166.8	4,611.6	4,475.0	136.59	33.763		
6,600.0	6,578.8	6,592.8	6,592.8	14.3	131.9	-3.66	4,441.1	-166.8	4,593.3	4,459.2	134.14	34.241		
6,650.0	6,624.1	6,638.1	6,638.1	14.4	132.8	-3.80	4,441.1	-166.8	4,572.1	4,441.0	131.08	34.881		
6,700.0	6,667.8	6,681.8	6,681.8	14.4	133.6	-3.96	4,441.1	-166.8	4,547.9	4,420.5	127.39	35.699		
6,750.0	6,709.9	6,723.9	6,723.9	14.5	134.5	-4.15	4,441.1	-166.8	4,520.9	4,397.8	123.11	36.722		
6,800.0	6,750.1	6,764.1	6,764.1	14.5	135.3	-4.38	4,441.1	-166.8	4,491.3	4,373.0	118.25	37.981		
6,850.0	6,788.2	6,802.2	6,802.2	14.6	136.0	-4.67	4,441.1	-166.8	4,459.0	4,346.2	112.84	39.517		
6,900.0	6,824.2	6,838.2	6,838.2	14.6	136.8	-5.01	4,441.1	-166.8	4,424.4	4,317.5	106.91	41.383		
6,950.0	6,857.9	6,871.9	6,871.9	14.8	137.4	-5.43	4,441.1	-166.8	4,387.5	4,287.0	100.53	43.646		
7,000.0	6,889.0	6,903.0	6,903.0	14.9	138.1	-5.94	4,441.1	-166.8	4,348.5	4,254.7	93.74	46.387		
7,050.0	6,917.5	6,931.5	6,931.5	15.2	138.6	-6.58	4,441.1	-166.8	4,307.5	4,220.8	86.66	49.705		
7,100.0	6,943.3	6,957.3	6,957.3	15.4	139.1	-7.41	4,441.1	-166.8	4,264.7	4,185.3	79.43	53.693		
7,150.0	6,966.2	6,980.2	6,980.2	15.7	139.6	-8.48	4,441.1	-166.8	4,220.4	4,148.1	72.29	58.381		
7,200.0	6,986.2	7,000.2	7,000.2	16.1	140.0	-9.94	4,441.1	-166.8	4,174.7	4,108.9	65.71	63.531		
7,250.0	7,003.1	7,017.1	7,017.1	16.5	140.3	-12.02	4,441.1	-166.8	4,127.7	4,067.1	60.61	68.099		
7,300.0	7,016.9	7,030.9	7,030.9	16.9	140.6	-15.15	4,441.1	-166.8	4,079.8	4,020.8	58.92	69.238		
7,350.0	7,027.5	7,041.5	7,041.5	17.4	140.8	-20.35	4,441.1	-166.8	4,031.0	3,966.6	64.42	62.572		
7,400.0	7,035.0	7,049.0	7,049.0	17.9	141.0	-30.33	4,441.1	-166.8	3,981.7	3,897.6	84.07	47.359		
7,450.0	7,039.1	7,053.1	7,053.1	18.5	141.1	-53.54	4,441.1	-166.8	3,932.0	3,803.0	129.05	30.469		
7,490.9	7,040.1	7,054.1	7,054.1	18.9	141.1	-92.30	4,441.1	-166.8	3,891.2	3,731.3	159.88	24.339		
7,500.0	7,040.1	7,054.1	7,054.1	19.0	141.1	-92.30	4,441.1	-166.8	3,882.1	3,722.2	159.98	24.266		
7,600.0	7,039.8	7,053.8	7,053.8	20.3	141.1	-92.24	4,441.1	-166.8	3,782.4	3,621.2	161.22	23.461		
7,700.0	7,039.5	7,053.5	7,053.5	21.6	141.1	-92.18	4,441.1	-166.8	3,682.7	3,520.1	162.55	22.655		
7,800.0	7,039.3	7,053.3	7,053.3	23.0	141.1	-92.12	4,441.1	-166.8	3,582.9	3,419.0	163.97	21.851		
7,900.0	7,039.0	7,053.0	7,053.0	24.5	141.1	-92.06	4,441.1	-166.8	3,483.2	3,317.8	165.46	21.052		
8,000.0	7,038.7	7,052.7	7,052.7	26.1	141.1	-92.00	4,441.1	-166.8	3,383.5	3,216.5	167.00	20.260		
8,100.0	7,038.4	7,052.4	7,052.4	27.7	141.0	-91.94	4,441.1	-166.8	3,283.9	3,115.3	168.59	19.478		
8,200.0	7,038.1	7,052.1	7,052.1	29.3	141.0	-91.88	4,441.1	-166.8	3,184.2	3,014.0	170.23	18.706		
8,300.0	7,037.9	7,051.9	7,051.9	30.9	141.0	-91.82	4,441.1	-166.8	3,084.6	2,912.7	171.89	17.945		
8,400.0	7,037.6	7,051.6	7,051.6	32.6	141.0	-91.76	4,441.1	-166.8	2,985.0	2,811.4	173.58	17.196		

Offset Design Diana 6T-HZ Pad Sec.6-T6N-R65W - Harsh 2 (Exist.) - Wellbore #1 - Wellbore #1													Offset Site Error: 0.0 ft	
Survey Program: 7300-UNKNOWN													Offset Well Error: 0.0 ft	
Reference		Offset		Semi Major Axis			Distance							
Measured Depth	Vertical Depth	Measured Depth	Vertical Depth	Reference	Offset	Highside Toolface	Offset Wellbore Centre		Between Centres	Between Ellipses	Minimum Separation	Separation Factor	Warning	
(ft)	(ft)	(ft)	(ft)	(ft)	(ft)	(°)	+N/-S (ft)	+E/-W (ft)	(ft)	(ft)	(ft)			
8,500.0	7,037.3	7,051.3	7,051.3	34.4	141.0	-91.70	4,441.1	-166.8	2,885.4	2,710.1	175.30	16.460		
8,600.0	7,037.0	7,051.0	7,051.0	36.1	141.0	-91.65	4,441.1	-166.8	2,785.9	2,608.8	177.04	15.736		
8,700.0	7,036.7	7,050.7	7,050.7	37.9	141.0	-91.59	4,441.1	-166.8	2,686.3	2,507.5	178.79	15.025		
8,800.0	7,036.5	7,050.5	7,050.5	39.6	141.0	-91.53	4,441.1	-166.8	2,586.9	2,406.3	180.56	14.327		
8,900.0	7,036.2	7,050.2	7,050.2	41.4	141.0	-91.47	4,441.1	-166.8	2,487.4	2,305.1	182.35	13.641		
9,000.0	7,035.9	7,049.9	7,049.9	43.2	141.0	-91.41	4,441.1	-166.8	2,388.0	2,203.9	184.14	12.968		
9,100.0	7,035.6	7,049.6	7,049.6	45.0	141.0	-91.35	4,441.1	-166.8	2,288.7	2,102.8	185.95	12.308		
9,200.0	7,035.3	7,049.3	7,049.3	46.8	141.0	-91.29	4,441.1	-166.8	2,189.4	2,001.7	187.76	11.661		
9,300.0	7,035.1	7,049.1	7,049.1	48.7	141.0	-91.23	4,441.1	-166.8	2,090.2	1,900.6	189.59	11.025		
9,400.0	7,034.8	7,048.8	7,048.8	50.5	141.0	-91.17	4,441.1	-166.8	1,991.1	1,799.7	191.42	10.402		
9,500.0	7,034.5	7,048.5	7,048.5	52.3	141.0	-91.11	4,441.1	-166.8	1,892.1	1,698.8	193.26	9.791		
9,600.0	7,034.2	7,048.2	7,048.2	54.2	141.0	-91.05	4,441.1	-166.8	1,793.2	1,598.1	195.10	9.191		
9,700.0	7,033.9	7,047.9	7,047.9	56.0	141.0	-90.99	4,441.1	-166.8	1,694.4	1,497.4	196.95	8.603		
9,800.0	7,033.7	7,047.7	7,047.7	57.9	141.0	-90.93	4,441.1	-166.8	1,595.7	1,396.9	198.80	8.027		
9,900.0	7,033.4	7,047.4	7,047.4	59.7	140.9	-90.87	4,441.1	-166.8	1,497.3	1,296.6	200.65	7.462		
10,000.0	7,033.1	7,047.1	7,047.1	61.6	140.9	-90.81	4,441.1	-166.8	1,399.0	1,196.5	202.51	6.908		
10,100.0	7,032.8	7,046.8	7,046.8	63.5	140.9	-90.76	4,441.1	-166.8	1,301.0	1,096.6	204.38	6.366		
10,200.0	7,032.6	7,046.6	7,046.6	65.3	140.9	-90.70	4,441.1	-166.8	1,203.4	997.1	206.24	5.835		
10,300.0	7,032.3	7,046.3	7,046.3	67.2	140.9	-90.64	4,441.1	-166.8	1,106.1	898.0	208.11	5.315		
10,400.0	7,032.0	7,046.0	7,046.0	69.1	140.9	-90.58	4,441.1	-166.8	1,009.5	799.5	209.99	4.807		
10,500.0	7,031.7	7,045.7	7,045.7	71.0	140.9	-90.52	4,441.1	-166.8	913.5	701.6	211.86	4.312		
10,600.0	7,031.4	7,045.4	7,045.4	72.8	140.9	-90.46	4,441.1	-166.8	818.5	604.7	213.74	3.829		
10,700.0	7,031.2	7,045.2	7,045.2	74.7	140.9	-90.40	4,441.1	-166.8	724.8	509.2	215.62	3.362		
10,800.0	7,030.9	7,044.9	7,044.9	76.6	140.9	-90.34	4,441.1	-166.8	633.1	415.6	217.50	2.911		
10,900.0	7,030.6	7,044.6	7,044.6	78.5	140.9	-90.28	4,441.1	-166.8	544.3	324.9	219.38	2.481		
11,000.0	7,030.3	7,044.3	7,044.3	80.4	140.9	-90.22	4,441.1	-166.8	460.1	238.8	221.26	2.079		
11,100.0	7,030.0	7,044.0	7,044.0	82.3	140.9	-90.16	4,441.1	-166.8	383.5	160.4	223.15	1.719		
11,200.0	7,029.8	7,043.8	7,043.8	84.2	140.9	-90.10	4,441.1	-166.8	320.2	95.2	225.03	1.423 Level 3		
11,300.0	7,029.5	7,043.5	7,043.5	86.1	140.9	-90.04	4,441.1	-166.8	279.3	52.3	226.92	1.231 Level 2		
11,372.8	7,029.3	7,043.3	7,043.3	87.4	140.9	-90.00	4,441.1	-166.8	269.6	41.3	228.29	1.181 Level 2, CC, ES, SF		
11,400.0	7,029.2	7,043.2	7,043.2	88.0	140.9	-89.98	4,441.1	-166.8	271.0	42.2	228.81	1.184 Level 2		
11,471.3	7,029.0	7,043.0	7,043.0	89.0	140.9	-89.94	4,441.1	-166.8	287.1	57.2	229.90	1.249 Level 2		

<b>Company:</b>	PETROLEUM DEVELOPMENT CORP Weld County CO	<b>Local Co-ordinate Reference:</b>	Well Diana 6T-241
<b>Project:</b>	SEC.6-T6N-R65W	<b>TVD Reference:</b>	WELL @ 4810.0ft (Original Well Elev)
<b>Reference Site:</b>	Diana 6T-HZ Pad Sec.6-T6N-R65W	<b>MD Reference:</b>	WELL @ 4810.0ft (Original Well Elev)
<b>Site Error:</b>	0.0ft	<b>North Reference:</b>	True
<b>Reference Well:</b>	Diana 6T-241	<b>Survey Calculation Method:</b>	Minimum Curvature
<b>Well Error:</b>	0.0ft	<b>Output errors are at</b>	2.00 sigma
<b>Reference Wellbore</b>	Wellbore #1	<b>Database:</b>	Landmark
<b>Reference Design:</b>	Plan #1 (1-25-13)	<b>Offset TVD Reference:</b>	Offset Datum

<b>Offset Design</b> Diana 6T-HZ Pad Sec.6-T6N-R65W - Harsh 32-6 (Exist.) - Wellbore #1 - Wellbore #1													<b>Offset Site Error:</b>	0.0 ft
Survey Program: 7300-UNKNOWN													<b>Offset Well Error:</b>	0.0 ft
Measured Depth (ft)	Vertical Depth (ft)	Measured Depth (ft)	Vertical Depth (ft)	Reference	Offset	Semi Major Axis	Highside Toolface (°)	Offset Wellbore Centre +N/-S (ft)	+E/-W (ft)	Between Centres (ft)	Between Ellipses (ft)	Minimum Separation (ft)	Separation Factor	Warning
0.0	0.0	5.0	5.0	0.0	0.1	-4.32		2,980.1	-225.2	2,988.6	2,988.5	0.10	N/A	
100.0	100.0	105.0	105.0	0.1	2.1	-4.32		2,980.1	-225.2	2,988.6	2,986.4	2.21	1,350.747	
200.0	200.0	205.0	205.0	0.3	4.1	-4.32		2,980.1	-225.2	2,988.6	2,984.2	4.44	673.519	
300.0	300.0	305.0	305.0	0.6	6.1	-4.32		2,980.1	-225.2	2,988.6	2,982.0	6.66	448.602	
400.0	400.0	405.0	405.0	0.8	8.1	-4.32		2,980.1	-225.2	2,988.6	2,979.7	8.89	336.298	
500.0	500.0	505.0	505.0	1.0	10.1	-4.32		2,980.1	-225.2	2,988.6	2,977.5	11.11	268.965	
600.0	600.0	605.0	605.0	1.2	12.1	-4.32		2,980.1	-225.2	2,988.6	2,975.3	13.34	224.096	
700.0	700.0	705.0	705.0	1.5	14.1	-4.32		2,980.1	-225.2	2,988.6	2,973.1	15.56	192.057	
800.0	800.0	805.0	805.0	1.7	16.1	-4.32		2,980.1	-225.2	2,988.6	2,970.8	17.79	168.034	
900.0	900.0	905.0	905.0	1.9	18.1	-4.32		2,980.1	-225.2	2,988.6	2,968.6	20.01	149.352	
1,000.0	1,000.0	1,005.0	1,005.0	2.1	20.1	-4.32		2,980.1	-225.2	2,988.6	2,966.4	22.24	134.409	
1,100.0	1,100.0	1,105.0	1,105.0	2.4	22.1	-4.32		2,980.1	-225.2	2,988.6	2,964.2	24.46	122.184	
1,200.0	1,200.0	1,205.0	1,205.0	2.6	24.1	-4.32		2,980.1	-225.2	2,988.6	2,962.0	26.68	111.997	
1,300.0	1,300.0	1,305.0	1,305.0	2.8	26.1	-4.32		2,980.1	-225.2	2,988.6	2,959.7	28.91	103.378	
1,400.0	1,400.0	1,405.0	1,405.0	3.0	28.1	-4.32		2,980.1	-225.2	2,988.6	2,957.5	31.13	95.991	
1,500.0	1,500.0	1,505.0	1,505.0	3.3	30.1	-4.32		2,980.1	-225.2	2,988.6	2,955.3	33.36	89.589	
1,600.0	1,600.0	1,605.0	1,605.0	3.5	32.1	-4.32		2,980.1	-225.2	2,988.6	2,953.1	35.58	83.988	
1,700.0	1,700.0	1,705.0	1,705.0	3.7	34.1	-4.32		2,980.1	-225.2	2,988.6	2,950.8	37.81	79.046	
1,800.0	1,800.0	1,805.0	1,805.0	3.9	36.1	-4.32		2,980.1	-225.2	2,988.6	2,948.6	40.03	74.653	
1,900.0	1,900.0	1,905.0	1,905.0	4.2	38.1	-4.32		2,980.1	-225.2	2,988.6	2,946.4	42.26	70.723	
2,000.0	2,000.0	2,005.0	2,005.0	4.4	40.1	-4.32		2,980.1	-225.2	2,988.6	2,944.2	44.48	67.186	
2,100.0	2,100.0	2,105.0	2,105.0	4.6	42.1	-4.32		2,980.1	-225.2	2,988.6	2,941.9	46.71	63.986	
2,200.0	2,200.0	2,205.0	2,205.0	4.8	44.1	-4.32		2,980.1	-225.2	2,988.6	2,939.7	48.93	61.077	
2,300.0	2,300.0	2,305.0	2,305.0	5.1	46.1	-4.32		2,980.1	-225.2	2,988.6	2,937.5	51.16	58.420	
2,400.0	2,400.0	2,405.0	2,405.0	5.3	48.1	-4.32		2,980.1	-225.2	2,988.6	2,935.3	53.38	55.986	
2,500.0	2,500.0	2,505.0	2,505.0	5.5	50.1	-4.32		2,980.1	-225.2	2,988.6	2,933.0	55.61	53.746	
2,600.0	2,600.0	2,605.0	2,605.0	5.7	52.1	-4.32		2,980.1	-225.2	2,988.6	2,930.8	57.83	51.678	
2,700.0	2,700.0	2,705.0	2,705.0	6.0	54.1	-4.32		2,980.1	-225.2	2,988.6	2,928.6	60.06	49.764	
2,800.0	2,800.0	2,805.0	2,805.0	6.2	56.1	-4.32		2,980.1	-225.2	2,988.6	2,926.4	62.28	47.986	
2,900.0	2,900.0	2,905.0	2,905.0	6.4	58.1	-4.32		2,980.1	-225.2	2,988.6	2,924.1	64.51	46.331	
3,000.0	3,000.0	3,005.0	3,005.0	6.6	60.1	-4.32		2,980.1	-225.2	2,988.6	2,921.9	66.73	44.787	
3,100.0	3,100.0	3,105.0	3,105.0	6.8	62.1	-158.54		2,980.1	-225.2	2,990.3	2,921.4	68.89	43.405	
3,200.0	3,199.8	3,204.8	3,204.8	7.0	64.1	-158.54		2,980.1	-225.2	2,995.1	2,924.2	70.95	42.215	
3,300.0	3,299.5	3,304.5	3,304.5	7.2	66.1	-158.54		2,980.1	-225.2	3,003.2	2,930.3	72.92	41.183	
3,333.4	3,332.7	3,337.7	3,337.7	7.2	66.8	-158.54		2,980.1	-225.2	3,006.7	2,933.1	73.56	40.872	
3,400.0	3,398.8	3,403.8	3,403.8	7.4	68.1	-158.59		2,980.1	-225.2	3,013.9	2,938.9	75.00	40.186	
3,500.0	3,498.1	3,503.1	3,503.1	7.6	70.1	-158.67		2,980.1	-225.2	3,024.7	2,947.6	77.16	39.202	
3,600.0	3,597.4	3,602.4	3,602.4	7.8	72.0	-158.75		2,980.1	-225.2	3,035.5	2,956.2	79.32	38.269	
3,700.0	3,696.8	3,701.8	3,701.8	8.0	74.0	-158.83		2,980.1	-225.2	3,046.4	2,964.9	81.49	37.385	
3,800.0	3,796.1	3,801.1	3,801.1	8.2	76.0	-158.91		2,980.1	-225.2	3,057.2	2,973.6	83.66	36.545	
3,900.0	3,895.4	3,900.4	3,900.4	8.4	78.0	-158.99		2,980.1	-225.2	3,068.1	2,982.2	85.83	35.747	
4,000.0	3,994.7	3,999.7	3,999.7	8.6	80.0	-159.07		2,980.1	-225.2	3,078.9	2,990.9	88.00	34.987	
4,100.0	4,094.1	4,099.1	4,099.1	8.9	82.0	-159.14		2,980.1	-225.2	3,089.8	2,999.6	90.18	34.262	
4,200.0	4,193.4	4,198.4	4,198.4	9.1	84.0	-159.22		2,980.1	-225.2	3,100.6	3,008.3	92.36	33.572	
4,300.0	4,292.7	4,297.7	4,297.7	9.4	86.0	-159.30		2,980.1	-225.2	3,111.5	3,017.0	94.54	32.912	
4,400.0	4,392.0	4,397.0	4,397.0	9.6	87.9	-159.37		2,980.1	-225.2	3,122.4	3,025.7	96.72	32.281	
4,500.0	4,491.4	4,496.4	4,496.4	9.9	89.9	-159.45		2,980.1	-225.2	3,133.3	3,034.4	98.91	31.678	
4,600.0	4,590.7	4,595.7	4,595.7	10.1	91.9	-159.52		2,980.1	-225.2	3,144.2	3,043.1	101.10	31.100	
4,700.0	4,690.0	4,695.0	4,695.0	10.4	93.9	-159.59		2,980.1	-225.2	3,155.0	3,051.8	103.29	30.547	
4,800.0	4,789.3	4,794.3	4,794.3	10.7	95.9	-159.67		2,980.1	-225.2	3,165.9	3,060.5	105.48	30.016	
4,900.0	4,888.6	4,893.6	4,893.6	10.9	97.9	-159.74		2,980.1	-225.2	3,176.8	3,069.2	107.67	29.506	

CC - Min centre to center distance or convergent point, SF - min separation factor, ES - min ellipse separation

<b>Company:</b>	PETROLEUM DEVELOPMENT CORP Weld County CO	<b>Local Co-ordinate Reference:</b>	Well Diana 6T-241
<b>Project:</b>	SEC.6-T6N-R65W	<b>TVD Reference:</b>	WELL @ 4810.0ft (Original Well Elev)
<b>Reference Site:</b>	Diana 6T-HZ Pad Sec.6-T6N-R65W	<b>MD Reference:</b>	WELL @ 4810.0ft (Original Well Elev)
<b>Site Error:</b>	0.0ft	<b>North Reference:</b>	True
<b>Reference Well:</b>	Diana 6T-241	<b>Survey Calculation Method:</b>	Minimum Curvature
<b>Well Error:</b>	0.0ft	<b>Output errors are at</b>	2.00 sigma
<b>Reference Wellbore</b>	Wellbore #1	<b>Database:</b>	Landmark
<b>Reference Design:</b>	Plan #1 (1-25-13)	<b>Offset TVD Reference:</b>	Offset Datum

Offset Design Diana 6T-HZ Pad Sec.6-T6N-R65W - Harsh 32-6 (Exist.) - Wellbore #1 - Wellbore #1													Offset Site Error:	0.0 ft
Survey Program: 7300-UNKNOWN													Offset Well Error:	0.0 ft
Measured Depth (ft)	Vertical Depth (ft)	Measured Depth (ft)	Vertical Depth (ft)	Reference	Offset	Highside Toolface (°)	Offset Wellbore Centre +N/-S (ft)	Offset Wellbore Centre +E/-W (ft)	Between Centres (ft)	Between Ellipses (ft)	Minimum Separation (ft)	Separation Factor	Warning	
4,979.2	4,967.3	4,972.3	4,972.3	11.1	99.4	-159.80	2,980.1	-225.2	3,185.5	3,076.1	109.40	29.117		
5,000.0	4,988.0	4,993.0	4,993.0	11.2	99.9	-159.83	2,980.1	-225.2	3,187.7	3,077.7	109.94	28.996		
5,100.0	5,087.6	5,092.6	5,092.6	11.4	101.9	-159.94	2,980.1	-225.2	3,196.3	3,083.8	112.44	28.427		
5,200.0	5,187.4	5,192.4	5,192.4	11.7	103.8	-160.01	2,980.1	-225.2	3,201.6	3,086.8	114.83	27.880		
5,300.0	5,287.4	5,292.4	5,292.4	11.9	105.8	-160.04	2,980.1	-225.2	3,203.7	3,086.5	117.11	27.355		
5,312.6	5,300.0	5,305.0	5,305.0	11.9	106.1	-5.83	2,980.1	-225.2	3,203.7	3,086.3	117.39	27.291		
5,400.0	5,387.4	5,392.4	5,392.4	12.1	107.8	-5.83	2,980.1	-225.2	3,203.7	3,084.4	119.32	26.851		
5,500.0	5,487.4	5,492.4	5,492.4	12.3	109.8	-5.83	2,980.1	-225.2	3,203.7	3,082.2	121.53	26.362		
5,600.0	5,587.4	5,592.4	5,592.4	12.5	111.8	-5.83	2,980.1	-225.2	3,203.7	3,079.9	123.74	25.890		
5,700.0	5,687.4	5,692.4	5,692.4	12.7	113.8	-5.83	2,980.1	-225.2	3,203.7	3,077.7	125.96	25.435		
5,800.0	5,787.4	5,792.4	5,792.4	12.9	115.8	-5.83	2,980.1	-225.2	3,203.7	3,075.5	128.17	24.995		
5,900.0	5,887.4	5,892.4	5,892.4	13.1	117.8	-5.83	2,980.1	-225.2	3,203.7	3,073.3	130.39	24.571		
6,000.0	5,987.4	5,992.4	5,992.4	13.3	119.8	-5.83	2,980.1	-225.2	3,203.7	3,071.1	132.60	24.160		
6,100.0	6,087.4	6,092.4	6,092.4	13.5	121.8	-5.83	2,980.1	-225.2	3,203.7	3,068.9	134.82	23.763		
6,200.0	6,187.4	6,192.4	6,192.4	13.7	123.8	-5.83	2,980.1	-225.2	3,203.7	3,066.7	137.03	23.379		
6,288.8	6,276.2	6,281.2	6,281.2	13.9	125.6	-5.83	2,980.1	-225.2	3,203.7	3,064.7	139.00	23.048		
6,300.0	6,287.4	6,292.4	6,292.4	13.9	125.8	-5.86	2,980.1	-225.2	3,203.6	3,064.4	139.23	23.009		
6,350.0	6,337.3	6,342.3	6,342.3	14.0	126.8	-5.88	2,980.1	-225.2	3,201.3	3,061.4	139.89	22.883		
6,400.0	6,387.0	6,392.0	6,392.0	14.1	127.8	-5.94	2,980.1	-225.2	3,195.7	3,055.7	139.96	22.833		
6,450.0	6,436.2	6,441.2	6,441.2	14.1	128.8	-6.02	2,980.1	-225.2	3,186.8	3,047.4	139.41	22.859		
6,500.0	6,484.7	6,489.7	6,489.7	14.2	129.8	-6.15	2,980.1	-225.2	3,174.8	3,036.6	138.25	22.964		
6,550.0	6,532.3	6,537.3	6,537.3	14.3	130.7	-6.30	2,980.1	-225.2	3,159.7	3,023.2	136.47	23.154		
6,600.0	6,578.8	6,583.8	6,583.8	14.3	131.7	-6.51	2,980.1	-225.2	3,141.5	3,007.4	134.07	23.433		
6,650.0	6,624.1	6,629.1	6,629.1	14.4	132.6	-6.75	2,980.1	-225.2	3,120.3	2,989.3	131.05	23.810		
6,700.0	6,667.8	6,672.8	6,672.8	14.4	133.5	-7.05	2,980.1	-225.2	3,096.3	2,968.8	127.45	24.295		
6,750.0	6,709.9	6,714.9	6,714.9	14.5	134.3	-7.42	2,980.1	-225.2	3,069.4	2,946.1	123.27	24.901		
6,800.0	6,750.1	6,755.1	6,755.1	14.5	135.1	-7.86	2,980.1	-225.2	3,039.9	2,921.3	118.54	25.643		
6,850.0	6,788.2	6,793.2	6,793.2	14.6	135.9	-8.39	2,980.1	-225.2	3,007.8	2,894.4	113.33	26.540		
6,900.0	6,824.2	6,829.2	6,829.2	14.6	136.6	-9.03	2,980.1	-225.2	2,973.3	2,865.6	107.68	27.612		
6,950.0	6,857.9	6,862.9	6,862.9	14.8	137.3	-9.81	2,980.1	-225.2	2,936.5	2,834.8	101.69	28.876		
7,000.0	6,889.0	6,894.0	6,894.0	14.9	137.9	-10.77	2,980.1	-225.2	2,897.7	2,802.2	95.51	30.340		
7,050.0	6,917.5	6,922.5	6,922.5	15.2	138.5	-11.98	2,980.1	-225.2	2,856.9	2,767.5	89.32	31.983		
7,100.0	6,943.3	6,948.3	6,948.3	15.4	139.0	-13.51	2,980.1	-225.2	2,814.3	2,730.8	83.49	33.709		
7,150.0	6,966.2	6,971.2	6,971.2	15.7	139.4	-15.49	2,980.1	-225.2	2,770.2	2,691.6	78.57	35.258		
7,200.0	6,986.2	6,991.2	6,991.2	16.1	139.8	-18.14	2,980.1	-225.2	2,724.7	2,649.2	75.51	36.083		
7,250.0	7,003.1	7,008.1	7,008.1	16.5	140.2	-21.81	2,980.1	-225.2	2,678.0	2,602.2	75.84	35.309		
7,300.0	7,016.9	7,021.9	7,021.9	16.9	140.4	-27.13	2,980.1	-225.2	2,630.3	2,548.6	81.76	32.171		
7,350.0	7,027.5	7,032.5	7,032.5	17.4	140.7	-35.25	2,980.1	-225.2	2,581.9	2,486.0	95.88	26.927		
7,400.0	7,035.0	7,040.0	7,040.0	17.9	140.8	-48.31	2,980.1	-225.2	2,532.8	2,412.8	120.07	21.095		
7,450.0	7,039.1	7,044.1	7,044.1	18.5	140.9	-69.08	2,980.1	-225.2	2,483.4	2,334.4	149.02	16.666		
7,490.9	7,040.1	7,045.1	7,045.1	18.9	140.9	-91.18	2,980.1	-225.2	2,442.9	2,283.1	159.78	15.289		
7,500.0	7,040.1	7,045.1	7,045.1	19.0	140.9	-91.18	2,980.1	-225.2	2,433.9	2,274.0	159.89	15.222		
7,600.0	7,039.8	7,044.8	7,044.8	20.3	140.9	-91.13	2,980.1	-225.2	2,334.8	2,173.7	161.12	14.491		
7,700.0	7,039.5	7,044.5	7,044.5	21.6	140.9	-91.08	2,980.1	-225.2	2,235.9	2,073.4	162.45	13.763		
7,800.0	7,039.3	7,044.3	7,044.3	23.0	140.9	-91.03	2,980.1	-225.2	2,137.0	1,973.1	163.87	13.041		
7,900.0	7,039.0	7,044.0	7,044.0	24.5	140.9	-90.98	2,980.1	-225.2	2,038.2	1,872.9	165.35	12.327		
8,000.0	7,038.7	7,043.7	7,043.7	26.1	140.9	-90.93	2,980.1	-225.2	1,939.6	1,772.7	166.89	11.622		
8,100.0	7,038.4	7,043.4	7,043.4	27.7	140.9	-90.89	2,980.1	-225.2	1,841.1	1,672.6	168.48	10.928		
8,200.0	7,038.1	7,043.1	7,043.1	29.3	140.9	-90.84	2,980.1	-225.2	1,742.8	1,572.7	170.11	10.245		
8,300.0	7,037.9	7,042.9	7,042.9	30.9	140.9	-90.79	2,980.1	-225.2	1,644.7	1,472.9	171.77	9.575		
8,400.0	7,037.6	7,042.6	7,042.6	32.6	140.9	-90.74	2,980.1	-225.2	1,546.8	1,373.3	173.46	8.917		

CC - Min centre to center distance or convergent point, SF - min separation factor, ES - min ellipse separation

<b>Company:</b>	PETROLEUM DEVELOPMENT CORP Weld County CO	<b>Local Co-ordinate Reference:</b>	Well Diana 6T-241
<b>Project:</b>	SEC.6-T6N-R65W	<b>TVD Reference:</b>	WELL @ 4810.0ft (Original Well Elev)
<b>Reference Site:</b>	Diana 6T-HZ Pad Sec.6-T6N-R65W	<b>MD Reference:</b>	WELL @ 4810.0ft (Original Well Elev)
<b>Site Error:</b>	0.0ft	<b>North Reference:</b>	True
<b>Reference Well:</b>	Diana 6T-241	<b>Survey Calculation Method:</b>	Minimum Curvature
<b>Well Error:</b>	0.0ft	<b>Output errors are at</b>	2.00 sigma
<b>Reference Wellbore</b>	Wellbore #1	<b>Database:</b>	Landmark
<b>Reference Design:</b>	Plan #1 (1-25-13)	<b>Offset TVD Reference:</b>	Offset Datum

Offset Design Diana 6T-HZ Pad Sec.6-T6N-R65W - Harsh 32-6 (Exist.) - Wellbore #1 - Wellbore #1													Offset Site Error:	0.0 ft
Survey Program: 7300-UNKNOWN													Offset Well Error:	0.0 ft
Measured Depth (ft)	Vertical Depth (ft)	Measured Depth (ft)	Vertical Depth (ft)	Reference	Offset	Semi Major Axis	Highside Toolface (°)	Offset Wellbore Centre +N/-S (ft)	Offset Wellbore Centre +E/-W (ft)	Between Centres (ft)	Between Ellipses (ft)	Minimum Separation (ft)	Separation Factor	Warning
8,500.0	7,037.3	7,042.3	7,042.3	34.4	140.8	-90.69		2,980.1	-225.2	1,449.2	1,274.0	175.18	8.273	
8,600.0	7,037.0	7,042.0	7,042.0	36.1	140.8	-90.64		2,980.1	-225.2	1,352.0	1,175.1	176.91	7.642	
8,700.0	7,036.7	7,041.7	7,041.7	37.9	140.8	-90.59		2,980.1	-225.2	1,255.2	1,076.5	178.66	7.025	
8,800.0	7,036.5	7,041.5	7,041.5	39.6	140.8	-90.54		2,980.1	-225.2	1,158.9	978.5	180.43	6.423	
8,900.0	7,036.2	7,041.2	7,041.2	41.4	140.8	-90.49		2,980.1	-225.2	1,063.4	881.2	182.21	5.836	
9,000.0	7,035.9	7,040.9	7,040.9	43.2	140.8	-90.45		2,980.1	-225.2	968.7	784.7	184.01	5.265	
9,100.0	7,035.6	7,040.6	7,040.6	45.0	140.8	-90.40		2,980.1	-225.2	875.2	689.4	185.81	4.710	
9,200.0	7,035.3	7,040.3	7,040.3	46.8	140.8	-90.35		2,980.1	-225.2	783.4	595.8	187.62	4.175	
9,300.0	7,035.1	7,040.1	7,040.1	48.7	140.8	-90.30		2,980.1	-225.2	693.8	504.3	189.44	3.662	
9,400.0	7,034.8	7,039.8	7,039.8	50.5	140.8	-90.25		2,980.1	-225.2	607.4	416.2	191.27	3.176	
9,500.0	7,034.5	7,039.5	7,039.5	52.3	140.8	-90.20		2,980.1	-225.2	525.9	332.8	193.10	2.724	
9,600.0	7,034.2	7,039.2	7,039.2	54.2	140.8	-90.15		2,980.1	-225.2	451.9	257.0	194.94	2.318	
9,700.0	7,033.9	7,038.9	7,038.9	56.0	140.8	-90.10		2,980.1	-225.2	389.7	192.9	196.79	1.980	
9,800.0	7,033.7	7,038.7	7,038.7	57.9	140.8	-90.05		2,980.1	-225.2	345.7	147.1	198.64	1.740	
9,900.0	7,033.4	7,038.4	7,038.4	59.7	140.8	-90.01		2,980.1	-225.2	327.3	126.9	200.49	1.633	
9,911.8	7,033.4	7,038.4	7,038.4	60.0	140.8	-90.00		2,980.1	-225.2	327.1	126.4	200.71	1.630 CC, ES, SF	
10,000.0	7,033.1	7,038.1	7,038.1	61.6	140.8	-89.96		2,980.1	-225.2	338.8	136.5	202.35	1.674	
10,100.0	7,032.8	7,037.8	7,037.8	63.5	140.8	-89.91		2,980.1	-225.2	377.4	173.2	204.21	1.848	
10,200.0	7,032.6	7,037.6	7,037.6	65.3	140.8	-89.86		2,980.1	-225.2	436.0	229.9	206.07	2.116	
10,300.0	7,032.3	7,037.3	7,037.3	67.2	140.7	-89.81		2,980.1	-225.2	507.6	299.7	207.94	2.441	
10,400.0	7,032.0	7,037.0	7,037.0	69.1	140.7	-89.76		2,980.1	-225.2	587.6	377.8	209.81	2.801	
10,500.0	7,031.7	7,036.7	7,036.7	71.0	140.7	-89.71		2,980.1	-225.2	673.0	461.3	211.68	3.179	
10,600.0	7,031.4	7,036.4	7,036.4	72.8	140.7	-89.66		2,980.1	-225.2	762.0	548.4	213.56	3.568	
10,700.0	7,031.2	7,036.2	7,036.2	74.7	140.7	-89.61		2,980.1	-225.2	853.4	637.9	215.43	3.961	
10,800.0	7,030.9	7,035.9	7,035.9	76.6	140.7	-89.57		2,980.1	-225.2	946.5	729.2	217.31	4.356	
10,900.0	7,030.6	7,035.6	7,035.6	78.5	140.7	-89.52		2,980.1	-225.2	1,040.9	821.7	219.19	4.749	
11,000.0	7,030.3	7,035.3	7,035.3	80.4	140.7	-89.47		2,980.1	-225.2	1,136.3	915.2	221.07	5.140	
11,100.0	7,030.0	7,035.0	7,035.0	82.3	140.7	-89.42		2,980.1	-225.2	1,232.4	1,009.4	222.95	5.528	
11,200.0	7,029.8	7,034.8	7,034.8	84.2	140.7	-89.37		2,980.1	-225.2	1,329.1	1,104.2	224.84	5.911	
11,300.0	7,029.5	7,034.5	7,034.5	86.1	140.7	-89.32		2,980.1	-225.2	1,426.2	1,199.5	226.72	6.291	
11,400.0	7,029.2	7,034.2	7,034.2	88.0	140.7	-89.27		2,980.1	-225.2	1,523.7	1,295.1	228.61	6.665	
11,471.3	7,029.0	7,034.0	7,034.0	89.0	140.7	-89.24		2,980.1	-225.2	1,593.4	1,363.7	229.69	6.937	

Reference Depths are relative to WELL @ 4810.0ft (Original Well Elev)Coordinates are relative to: Diana 6T-241  
Offset Depths are relative to Offset DatumCoordinate System is US State Plane 1983, Colorado Northern Zone  
Central Meridian is -105.500000 °Grid Convergence at Surface is: 0.51°



<b>Company:</b>	PETROLEUM DEVELOPMENT CORP Weld County CO	<b>Local Co-ordinate Reference:</b>	Well Diana 6T-241
<b>Project:</b>	SEC.6-T6N-R65W	<b>TVD Reference:</b>	WELL @ 4810.0ft (Original Well Elev)
<b>Reference Site:</b>	Diana 6T-HZ Pad Sec.6-T6N-R65W	<b>MD Reference:</b>	WELL @ 4810.0ft (Original Well Elev)
<b>Site Error:</b>	0.0ft	<b>North Reference:</b>	True
<b>Reference Well:</b>	Diana 6T-241	<b>Survey Calculation Method:</b>	Minimum Curvature
<b>Well Error:</b>	0.0ft	<b>Output errors are at</b>	2.00 sigma
<b>Reference Wellbore</b>	Wellbore #1	<b>Database:</b>	Landmark
<b>Reference Design:</b>	Plan #1 (1-25-13)	<b>Offset TVD Reference:</b>	Offset Datum

Reference Depths are relative to WELL @ 4810.0ft (Original Well Elev) Coordinates are relative to: Diana 6T-241  
 Offset Depths are relative to Offset Datum  
 Central Meridian is -105.500000 °  
 Coordinate System is US State Plane 1983, Colorado Northern Zone  
 Grid Convergence at Surface is: 0.51°

